

OPERATING INSTRUCTIONS AND PARTS LIST

Ariens

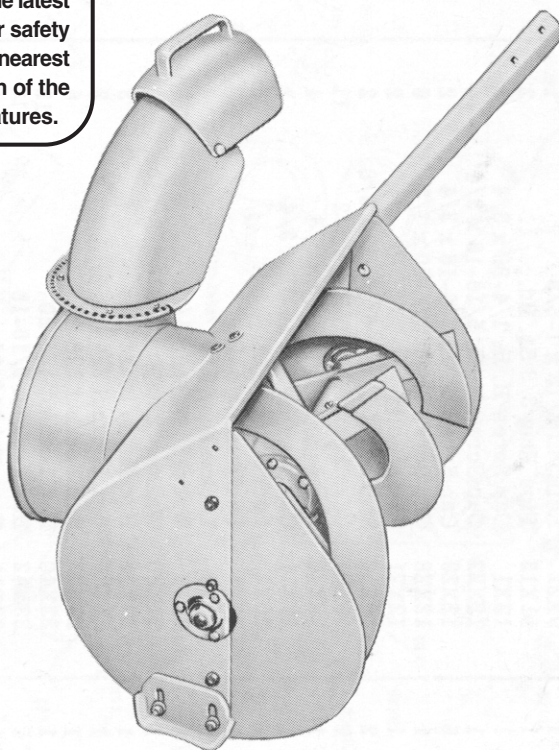


SNO - THRO ATTACHMENT

⚠ SAFETY MESSAGE ⚠

The product for which you have requested information or replacement parts is not a current product. The replacement models incorporate product designs, safety features, safety instructions or warnings which represent the latest "State Of The Art" developments. For your safety and those around you please contact your nearest Ariens/Gravely Dealer for a demonstration of the current product safety provisions and features.

Serial No.
7-10M 47001
and up



PRICE \$25

WARRANTY

Ariens Company hereby warrants to the original retail purchaser all new products of its own manufacture to be free from defects in material and workmanship.

Engine, parts or accessories not manufactured by Ariens Company, even though incorporated into its products, are not covered by this warranty.

The warranty period shall be one year from date of original purchase, except when the product is used for rental purposes, in which case the warranty period shall be for 45 days from date of original purchase.

Any transportation charges incurred on any product claimed defective, which shall include the time and expense of the distributor or dealer for pickup and/or return of the unit, shall be borne by the purchaser.

This warranty shall not apply to any failure resulting from misuse, neglect or accident. Ariens Company shall not be responsible for damage in transit or handling by any common or contract carrier. Under no circumstances, within or without the warranty period, will the company be liable for damages for loss of use, or damages resulting from delay, or any consequential damages.

The company reserves the right to incorporate any changes in design into its products without obligation to make such changes on units previously manufactured.

OPERATING INSTRUCTIONS

1. ATTACHING

a. Sno-Thro Attachment.

(1) Hook the notches in the lower portion of the Sno-Thro Attachment frame over the rod passing through the forward section of the tractor frame.

(2) Tip the two sections together, being sure the jaw clutch on the Sno-Thro Attachment and tractor are lined up.

(3) Insert and tighten the two 3/8-inch cap-screws through the top of the tractor frame and into the Sno-Thro Attachment.

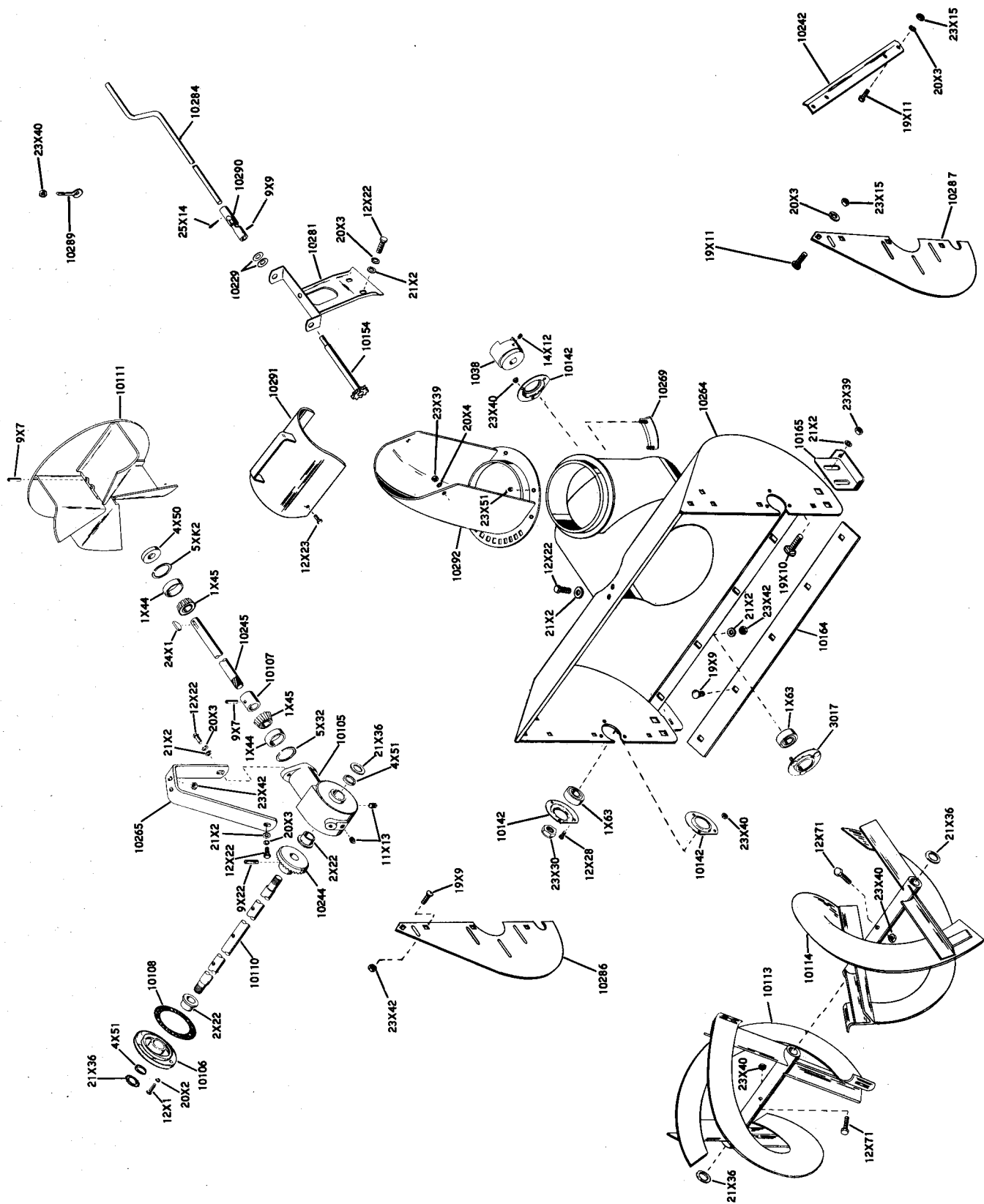
b. Chute Control Rod.

(1) Insert the rod hanger through the hole in the upper handle bar and secure with the 1/4-inch locknut.

(2) Fasten the chute control support to the tractor with the hardware provided. Position the support so that the gear meshes properly with the holes in the chute. Fasten securely.

(3) Slide the chute control rod through the rod hanger and into the end of the universal joint. Secure the rod to the universal joint with a cotter pin.

Part No.	Description	No. Req'd.	Part No.	Description	No. Req'd.
1038	Jaw Clutch	1	4X50	Seal	1
3017	Bearing Flange	1	4X51	Seal	2
10105	Gear Case	1	5X32	Snap Ring	1
10106	Gear Case Flange	1	5XK2	Snap Ring	1
10107	Bearing Spacer	1	9X7	Roll Pin 1/4 x 1-1/4	3
10108	Gasket	1	9X9	Roll Pin 1/8 x 1	1
10110	Front Gear Shaft	1	9X22	Roll Pin 5/16 x 1-3/8	1
10111	Fan	1	11X13	Pipe Plug 3/8 Sq. Hd.	1
10113	R. H. Rake	1	12X1	Cap Screw H. H. 1/4-20 x 3/4	2
10114	L. H. Rake	1	12X22	Cap Screw H. H. 5/16-18 x 3/4	5
10142	Bearing Flange	5	12X23	Cap Screw H. H. 3/8-16 x 3/4	4
10154	Control Sprocket	1	12X28	Cap Screw H. H. 1/4-20 x 1/2	2
10164	Scraper Blade	1	12X71	Shear Bolt	6
10165	Runner	2	14X12	Socket Set Screw 5/16-18 x 3/8	2
10229	Wave Washer	1 or 2	19X9	Carriage Bolt 5/16-18 x 1/2	2
10242	Slicer Bar	1	19X10	Carriage Bolt 3/8-16 x 3/4	11
10244	Helicon Gear	1	19X11	Carriage Bolt 5/16-18 x 3/4	4
10264	Blower Housing	1	20X2	Lockwasher 1/4	3
10265	Front Gear Case Support	1	20X3	Lockwasher 5/16	5
10289	Chute Clamp	1	20X4	Lockwasher 3/8	7
10281	Chute Control Support	3	21X2	Wrought Washer 5/16	4
10284	Chute Control Crank	1	21X36	Washer .880 ID x 1.375 x 1/16	15
10286	R. H. Rotor Shield	1	23X15	Hex Nut 5/16-18	4
10287	L. H. Rotor Shield	1	23X30	Hex Locknut 3/4-16	3
10289	Rod Hanger	1	23X39	Hex Locknut 3/8-16	2
10290	Universal Joint	1	23X40	Hex Locknut 1/4-20	6
10291	Deflector Chute	1	23X42	Hex Locknut 5/16-18	12
10292	Discharge Chute	1	23X51	Keys Nut #10-24	13
1X44	Bearing Cup	1	24X1	Woodruff Key #11	6
1X45	Bearing Cone	2	25X14	Cotter Pin 1/8 x 1-1/4	1
1X63	Ball Bearing	2		LABELS NOT ILLUSTRATED	
2X22	Flange Bushing	2	40X12	Sno-Thro Label	1
			40X14	Caution Label	1



OPERATING INSTRUCTIONS

1. ATTACHING

a. Sno-Thro Attachment.

(1) Hook the notches in the lower portion of the Sno-Thro Attachment frame over the rod passing through the forward section of the tractor frame.

(2) Tip the two sections together, being sure the jaw clutch on the Sno-Thro Attachment and tractor are lined up.

(3) Insert and tighten the two 3/8-inch cap-screws through the top of the tractor frame and into the Sno-Thro Attachment.

b. Chute Control Rod.

(1) Insert the rod hanger through the hole in the upper handle bar and secure with the 1/4-inch locknut.

(2) Fasten the chute control support to the tractor with the hardware provided. Position the support so that the gear meshes properly with the holes in the chute. Fasten securely.

(3) Slide the chute control rod through the rod hanger and into the end of the universal joint. Secure the rod to the universal joint with a cotter pin.

Part No.	Description	No. Req'd.	Part No.	Description	No. Req'd.
1038	Jaw Clutch	1	4X50	Seal	1
3017	Bearing Flange	1	4X51	Seal	2
10105	Gear Case	1	5X32	Snap Ring	1
10106	Gear Case Flange	1	5XK2	Snap Ring	1
10107	Bearing Spacer	1	9X7	Roll Pin 1/4 x 1-1/4	3
10108	Gasket	1	9X9	Roll Pin 1/8 x 1	1
10110	Front Gear Shaft	1	9X22	Roll Pin 5/16 x 1-3/8	1
10111	Fan	1	11X13	Pipe Plug 3/8 Sq. Hd.	2
10113	R. H. Rake	1	12X1	Cap Screw H. H. 1/4-20 x 3/4	5
10114	L. H. Rake	1	12X22	Cap Screw H. H. 5/16-18 x 3/4	4
10142	Bearing Flange	5	12X23	Cap Screw H. H. 3/8-16 x 3/4	2
10154	Control Sprocket	1	12X28	Cap Screw H. H. 1/4-20 x 1/2	6
10164	Scraper Blade	1	12X71	Shear Bolt	2
10165	Runner	2	14X12	Socket Set Screw 5/16-18 x 3/8	2
10229	Wave Washer	1 or 2	19X9	Carriage Bolt 5/16-18 x 1/2	11
10242	Slicer Bar	1	19X10	Carriage Bolt 3/8-16 x 3/4	4
10244	Helicon Gear	1	19X11	Carriage Bolt 5/16-18 x 3/4	3
10245	Helicon Pinion Shaft	1	20X2	Lockwasher 1/4	5
10264	Blower Housing	1	20X3	Lockwasher 5/16	7
10265	Front Gear Case Support	1	20X4	Lockwasher 3/8	4
10269	Chute Clamp	3	21X2	Wrought Washer 5/16	15
10281	Chute Control Support	1	21X36	Washer .880 ID x 1.375 x 1/16	4
10284	Chute Control Crank	1	23X15	Hex Nut 5/16-18	3
10286	R. H. Rotor Shield	1	23X30	Hex Locknut 3/4-16	2
10287	L. H. Rotor Shield	1	23X39	Hex Locknut 3/8-16	6
10289	Rod Hanger	1	23X40	Hex Locknut 1/4-20	12
10290	Universal Joint	1	23X42	Hex Locknut 5/16-18	13
10291	Deflector Chute	1	23X51	Keps Nut #10-24	6
10292	Discharge Chute	1	24X1	Woodruff Key #11	1
1X44	Bearing Cup	2	25X14	Cotter Pin 1/8 x 1-1/4	1
1X45	Bearing Cone	2	LABELS NOT ILLUSTRATED		
1X63	Ball Bearing	3	40X12	Sno-Thro Label	1
2X22	Flange Bushing	2	40X14	Caution Label	1

OPERATING INSTRUCTIONS

2. OPERATION

a. Tractor. For operation, see the section on OPERATION in the instruction book packed with the tractor.

b. Sno-Thro Attachment.

(1) Before the first snowfall, be sure the area on which the Sno-Thro is to be operated is free of sticks, stones, toys, or other obstructions which might be picked up by the machine during operation.

WARNING

Do not allow children to run through the snow being discharged from the machine. Small objects picked up by the machine may be thrown out of the chute with considerable force and can cause serious injury.

(2) To start the Sno-Thro Attachment, start the engine and engage the engine clutch on the tractor.

(3) To stop the Sno-Thro Attachment, disengage the engine clutch on the tractor.

3. RUNNERS

a. An adjustable runner is provided on each end of the blower housing (figure 1). Raising or lowering these runners controls the distance the scraper blade is held above the surface being plowed. Adjustment is accomplished by loosening the two nuts on each of the runners to the desired position and retightening the nuts. When plowing on concrete or other hard surfaces, these runners should be adjusted so that they are approximately 1/8-inch below the scraper blade. When plowing gravel side-ways or other gravel areas, adjust the runners so that they are 1-1/4-inch below the scraper blade.

b. In wet snow which packs easily, it may be necessary to remove the runners or turn them upside down so the scraper blade will scrape clean.

4. SCRAPER BLADE

An adjustable scraper blade (figure 2) is provided along the bottom edge of the blower housing. During operation, this blade runs along the surface being plowed directing the snow into the rotor and insuring a clean plowed surface. After considerable usage, this blade may wear and should be adjusted. The blade is adjusted by loosening the five nuts holding it to the housing, sliding it down to the new position and retightening the nuts. The blade is also

designed so that it may be reversed if one side becomes worn beyond further adjustment.

5. CHUTE

a. The chute is designed so that it can be rotated through an angle of 240 degrees by means of the chute control crank mounted on the handle bar. By turning the handle of the control rod, the blown snow can be directed either to the right or left or straight ahead. An adjustable deflector on the chute can be moved up or down to control the height and distance the snow will be blown.

b. The distance the snow is blown can also be controlled to some extent by the engine speed. Slowing down the engine by means of the throttle control will decrease the throw and increasing speed will increase the throw. By a combination of engine speed and deflector adjustment, the snow can be blown a distance suitable for nearly every situation.

6. SHEAR BOLT REPLACEMENT

Occasionally a small object may enter the rotor and become jammed in the blades. When this occurs the shear bolts, located on the shaft on which the rotor is mounted, will break and allow the rotor to turn freely on the shaft. Before plowing can be continued, this shear bolt must be replaced. See figure 2. USE ONLY ARIENS SHEAR BOLTS. USE OF OTHER TYPES OF BOLTS MAY RESULT IN SEVERE DAMAGE TO MACHINE. STOP THE ENGINE BEFORE ATTEMPTING TO REMOVE OBSTRUCTIONS OR REPLACE SHEAR BOLTS.

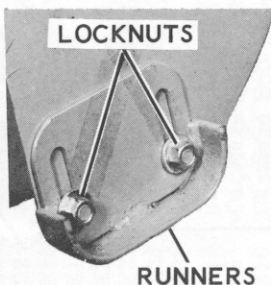


Figure 1

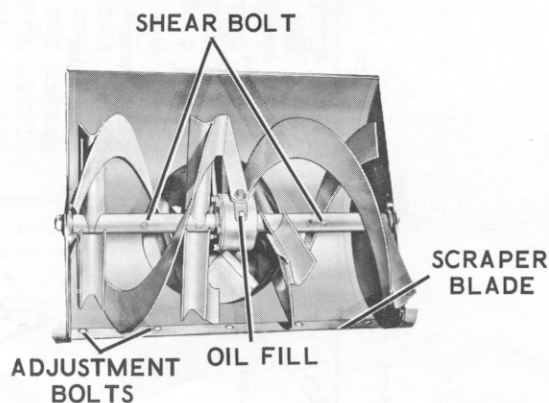


Figure 2

7. LUBRICATION

a. Drain and refill the snow rotor gear case with Ariens Gear Oil every 25 hours of operation.

b. To drain and refill, remove drain plug and allow oil to drain. Tip machine back on handle bars (be sure clutch is locked in UP position). Pour oil into filler hole until it starts to run out of drain hole. Replace drain and filler plug.