

# PARTS MANUAL

## ⚠ SAFETY MESSAGE ⚠

The product for which you have requested information or replacement parts is not a current product. The replacement models incorporate product designs, safety features, safety instructions or warnings which represent the latest "State Of The Art" developments. For your safety and those around you please contact your nearest Ariens/Gravely Dealer for a demonstration of the current product safety provisions and features.

# Ariens

## ROTARY TILLERS

### SERIAL NUMBER

MODEL 902015 - 3.5 H.P. TEC.  
SERIAL NO. 000101 AND UP

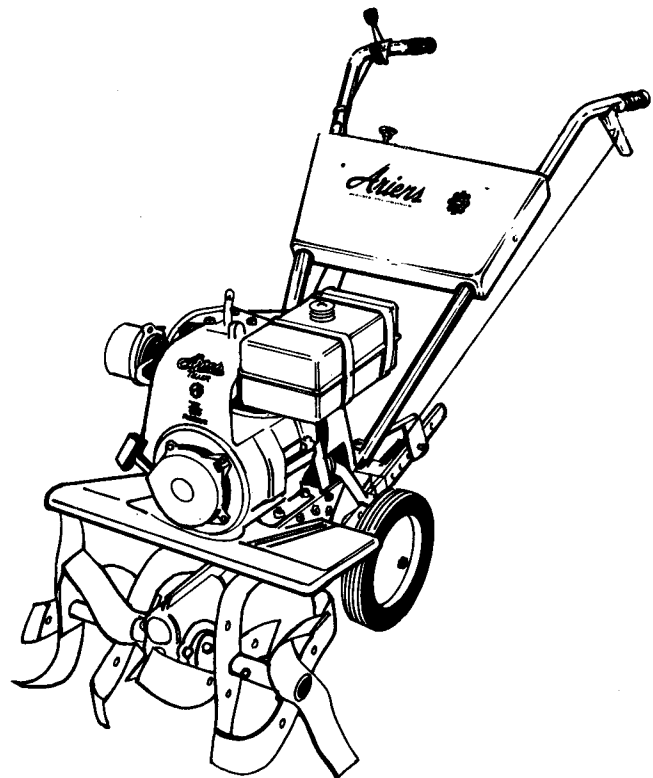
MODEL 902004 - 4 H.P. BRIGGS W/REV.  
SERIAL NO. 055689 AND UP

MODEL 902009 - 6 H.P. TEC.  
SERIAL NO. 018605 AND UP

MODEL 902012 - 6 H.P. TEC.  
SWING HANDLE W/REV.  
SERIAL NO. 005103 AND UP

MODEL 902007 - 4 H.P. BRIGGS  
CHAIN DRIVE TILLER  
SERIAL NO. 003001 AND UP

MODEL 902014 - 4 H.P. TEC.  
CHAIN DRIVE TILLER  
SERIAL NO. 00101 AND UP



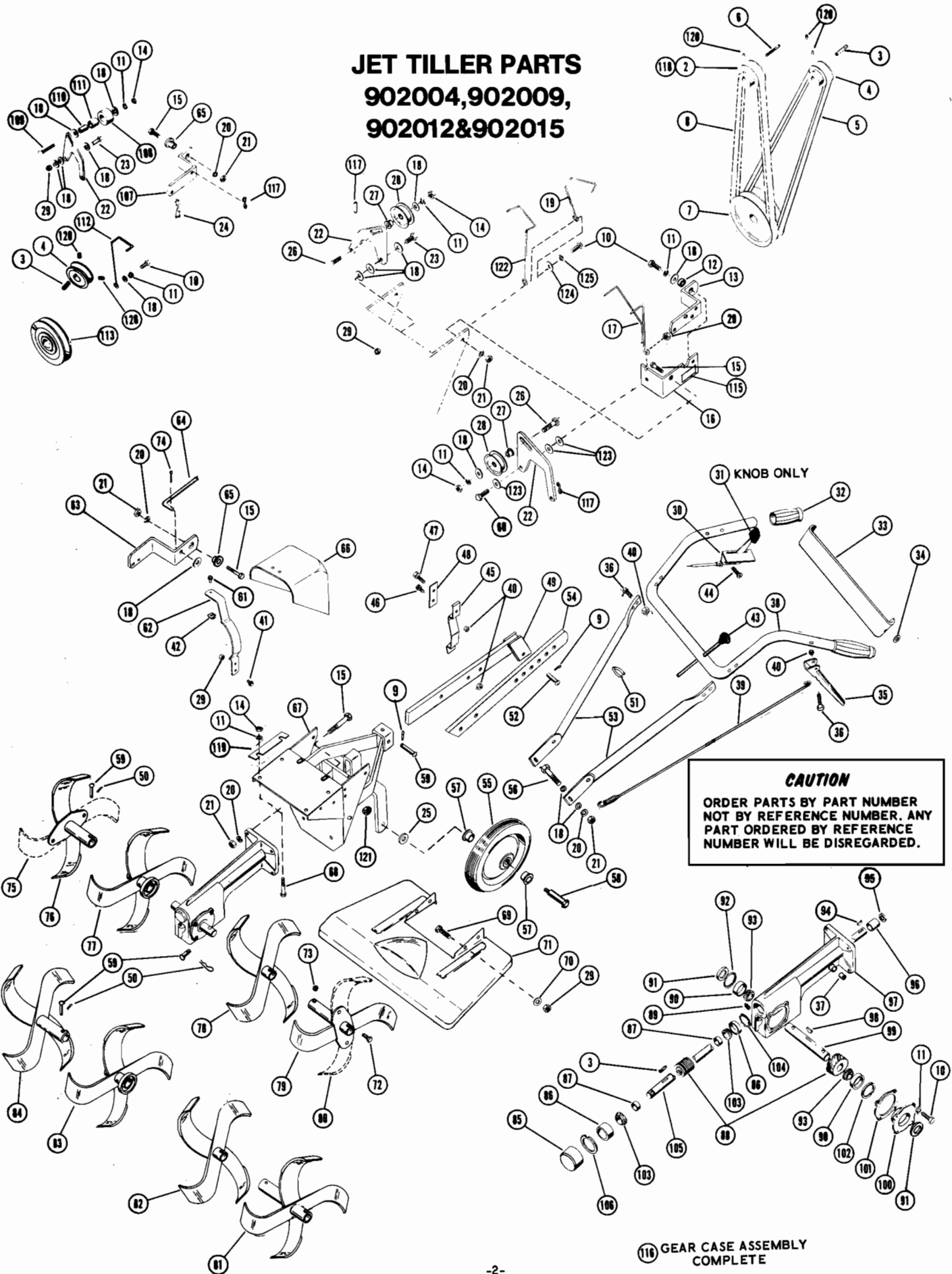
PARTS MANUAL PM-2-76

**ARIENS COMPANY**



**BRILLION, WIS. 54110**

# JET TILLER PARTS 902004, 902009, 902012&902015



**CAUTION**  
ORDER PARTS BY PART NUMBER  
NOT BY REFERENCE NUMBER. ANY  
PART ORDERED BY REFERENCE  
NUMBER WILL BE DISREGARDED.

**116** GEAR CASE ASSEMBLY  
COMPLETE

# JET TILLER PARTS LIST 902004,902009,902012&902015

REF. NO.	PART NO.	STOCK CODE	DESCRIPTION	NO. REQ'D				REF. NO.	PART NO.	STOCK CODE	DESCRIPTION	NO. REQ'D			
				902004	902009	902012	902015					902004	902009	902012	902015
2	502003	M	REVERSE SHEAVE	1	1			63	2410	M	CLUTCH LEVER	1	1		
3	66013	M	KEY 3/16 Square x 1	2	2	1	2	64	2057	S	REVERSE ROD	1	1		
4	502006	M	ENGINE SHEAVE	1			1	65	2069	F	SHOULDER SPACER	1	1		1
4	502005	M	ENGINE SHEAVE		1			66	2115	S	BELT COVER	1	1		1
5	72056	F	BELT	1	1	1	1	67	2301	S	FRAME	1	1	1	1
6	66015	M	KEY No. 5 Woodruff	1	1	1		68	59073	F	CAP SCREW 5/16-18 x 1-3/4	4	4		4
7	73039	M	DOUBLE SHEAVE	1	1			68	59003	F	CAP SCREW 5/16-18 x 1 H.H.				4
8	72043	F	BELT REVERSE	1				69	59002	F	CAP SCREW 5/16-18 x 5/8	4	4		4
8	72085	F	BELT REVERSE		1			70	64007	F	WASHER	4	4		4
8	72099	F	BELT REVERSE			1		71	2419	S	TINE HOOD	1	1		1
9	67029	F	HAIRPIN COTTER	2	2	2	2	72	59026	F	CAP SCREW 7/16-14 x 1	4	4		4
10	59022	F	CAP SCREW, 5/16-18 x 3/4	6	6	5	5	73	65019	F	LOCKNUT 7/16 x 14	4	4		4
11	63003	F	LOCKWASHER 5/16	12	12	10	10	74	67001	F	COTTER PIN 3/32 x 3/4	1	1		1
12	6071	M	BUSHING	1	1			75	2084	M	R.H. TINE	1	1		1
13	2171	M	CLUTCH LEVER	1	1			76	2012	M	R.H. OUTER TINE SPOOL	1	1		1
14	65015	F	NUT, 5/16 - 18	6	6	5	5	77	2010	M	R.H. INNER TINE SPOOL	1	1		1
15	59005	F	CAP SCREW, 3/8-16 x 1-1/4	6	6	4	6	78	2011	M	L.H. INNER TINE SPOOL	1	1		1
16	2405	M	FORWARD CLUTCH BRACKET	1	1			79	2013	M	L.H. OUTER TINE SPOOL	1	1		1
17	2406	M	BELT FINGER	1	1			80	2085	M	L.H. TINE	1	1		1
18	64002	F	WASHER 5/16	11	11	4	10	81	2077	M	L.H. OUTER TINE SPOOL				1
19	2165	M	BELT FINGER - Reverse		1			82	2075	M	L.H. INNER TINE SPOOL				1
20	63004	F	LOCKWASHER 3/8	8	8	4	8	83	2074	M	R.H. INNER TINE SPOOL				1
21	65018	F	NUT 3/8-16	8	8	4	8	84	2076	M	R.H. OUTER TINE SPOOL				1
22	2401	F	IDLER BRACKET	2	2	1	1	85	4037	M	DUST CAP	1	1		1
23	59069	F	CAP SCREW 5/16-18 x 1-1/4	1	1	1	1	86	54044	F	BEARING CUP	2	2		2
24	2146	M	LINK			1		87	2005	F	SPACER	2	2		2
25	64003	F	WASHER 1/2 Wrought				2	88	502009	F	WORM & WORM GEAR	1	1		1
26	62022	F	CARRIAGE BOLT 5/16-18 x 1-3/8	2	2	1					(Sold in pairs only)				
27	12131	F	BEARING SPACER	2	2	1		89	1138	S	PIPE PLUG 3/8 Square Head	1	1		1
28	12132	F	IDLER	2	2	1		90	54070	F	BEARING CUP	2	2		2
29	65042	F	LOCKNUT, 5/16-18	8	8	7		91	56066	F	SEAL	2	2		2
30	69039	F	THROTTLE CONTROL		1		1	92	57027	F	SNAP RING	1	1		1
30	69041	F	THROTTLE CONTROL	1				93	54069	F	BEARING CONE	2	2		2
31	75019	M	KNOB	1	1		1	94	66001	M	KEY No. 11 Woodruff	1	1		1
32	75006	M	HANDLE GRIP	2	2		2	95	56043	M	SEAL	1	1		1
33	2109	S	HANDLEBAR-PANEL	1			1	96	54022	F	NEEDLE BEARING	1	1		1
34	10196	M	HANDLEBAR WASHER	2	2		2	97	2014	S	GEAR CASE	1	1		1
35	2038	F	CLUTCH HANDLE	1	1		1	98	66008	M	KEY "A" Woodruff	1	1		1
36	59050	F	CAP SCREW 1/4-20 x 1-1/2	5	5		5	99	2007	M	TINE SHAFT	1	1		1
37	2009	S	BREATHER	1	1		1	100	2015	S	FLANGE	1	1		1
38	2421	S	UPPER HANDLEBAR, Painted	1	1		1	101	2008	F	GASKET	1	1		1
39	83008	M	CLUTCH SPRING	1	1		1	102	602983	F	SNAP RING - Adjusting	1	1		1
40	65040	F	LOCKNUT 1/4-20	7	7		7	103	54045	F	BEARING CONE	2	2		2
41	59002	F	CAP SCREW 5/16-18 x 5/8	2	2		2	104	57032	F	SNAP RING	1	1		1
42	65085	M	SPEED NUT	1	1		1	105	2003	F	WORM SHAFT	1	1		1
43	75015	M	SHIFT BALL	1	1		1	106	602982	F	SNAP RING - Adjusting Kit	1	1		1
44	74001	M	SELF TAPPING SCREW No. 10	2	2		2	107	2170	S	CLUTCH LEVER				1
45	2216	F	SPRING CLIP	1	1		1	108	2025	M	IDLER				1
46	59001	F	CAP SCREW 1/4-20 x 3/4	1	1		1	109	62018	F	CARRIAGE BOLT				1
47	59028	F	CAP SCREW 1/4-20 x 1/2	1	1		1	110	2026	M	SPACER				1
48	2217	M	SPRING SUPPORT	1	1		1	111	55016	M	BUSHING				1
49	2122	M	STICK BRACKET	1	1		1	112	2302	M	BELT FINGER				1
50	67010	F	HAIR PIN	4	4		4	113	73040	M	SHEAVE				1
51	69012	M	CABLE CLIP	3	2		2	115	78005	O	JET PATENT LABEL, Reverse	1	1		1
52	2048	F	CLEVIS PIN 7/16	1	1		1	116	602999	O	GEAR CASE ASSEMBLY	1	1		1
53	2034	M	LOWER HANDLEBAR, Painted	2	2		2	117	2172	M	LINK	2	2		1
54	2307	M	DEPTH HANDLE	1	1		1	118	502004	S	REVERSE SHEAVE				1
55	71040	F	WHEEL (includes bushings)	2	2		2	119	2157	F	SHIM	4	4		4
55	71054	M	WHEEL (includes bushings)				2	120	60004	S	SETSCREW	4	4		2
56	59004	F	CAP SCREW 3/8-16 x 1	2	2		3	121	65060	M	LOCKNUT	2	2		2
57	55021	F	WHEEL BUSHING	4	4		4	122	2408	M	BELT FINGER	1			1
58	2404	F	WHEEL BOLT	2	2		2	123	64093	M	WASHER	3	3		
59	2123	F	CLEVIS PIN	5	5		5	124	64123	M	WASHER	1	1		
60	59003	M	CAPSCREW 5/16-18x1	1	1			124	84002	M	WASHER				1
61	59039	F	CAP SCREW 5/16-18 x 1/2	1	1		1	125	63018	M	LOCKWASHER	1	1		
62	2174	S	BELT COVER BRACKET	1	1		1	125	63003	M	LOCKWASHER				1

### SUGGESTED PARTS STOCKING CODE

- F - Fast Moving Parts
- M - Medium Moving Parts
- S - Slow Moving Parts
- O - Customer Order Only

### ENGINE SPECIFICATIONS:

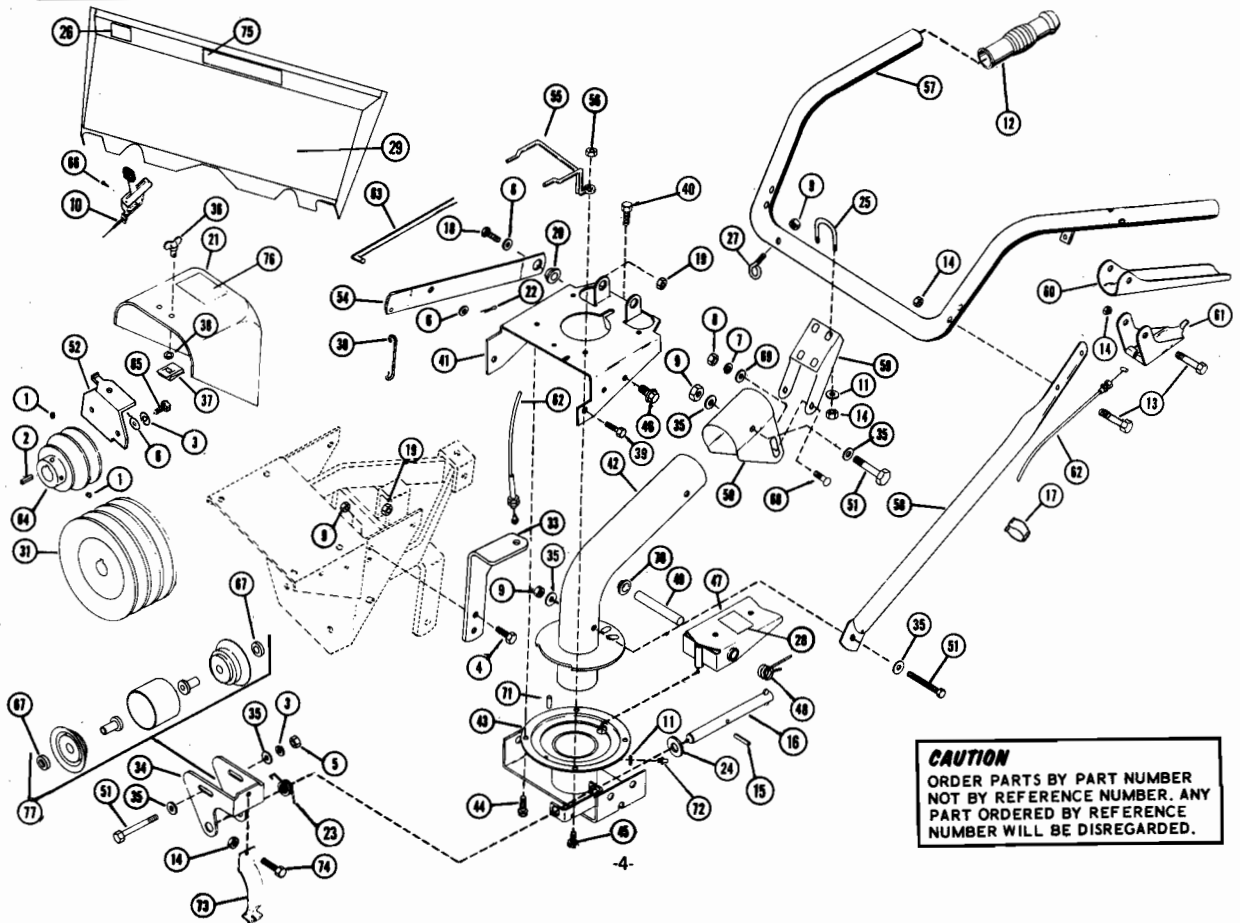
- Model 902004 - 4 H.P. Briggs 100292 Type 0154 Trim 02 with Ariens Decal 78305
- Model 902009 - 5 H.P. Tecumseh No. HS50-67082A with Ariens Decal No. 78306
- Model 902012 - 6 H.P. Tecumseh No. H60 - 75379J with Ariens Decal No. 78307
- Model 902015 - 3.5 H.P. Tecumseh No. H35-45475L with Ariens Decal 78344



# SWING HANDELBAR AND DASH PANEL 902009&902012

REF. NO.	PART NO.	STOCK NO.	DESCRIPTION	NO. REQ'D		REF. NO.	PART NO.	STOCK CODE	DESCRIPTION	NO. REQ'D	
				902009	902012					902009	902012
1	60004	S	SETSCREW, 5/16-18 x 3/8			2	40	70010	F	FLANGE WHIZLOCK SCREW	1
2	66013	M	KEY 3/16 Square x 1			1	41	2100	S	SWIVEL BRACKET	1
3	63003	F	LOCKWASHER, 5/16			3	42	2093	S	SWIVEL	1
4	59002	M	CAPSCREW			2	43	2152	S	SWIVEL RETAINER	1
5	65015	F	NUT, 5/16-18			1	44	70015	F	FLANGE WHIZLOCK SCREW	3
6	64002	F	WASHER 5/16 Wrought			4	45	70022	F	FLANGE WHIZLOCK SCREW	2
7	63004	F	LOCKWASHER, 3/8			2	46	70027	F	FLANGE WHIZLOCK SCREW	4
8	65018	F	NUT, 3/8-16			2	47	2095	S	RELEASE PEDAL	1
9	65042	F	LOCKNUT, 5/16-18			5	48	83079	M	TORSION SPRING	2
10	69042	F	THROTTLE CONTROL			1	49	2208	S	PIN	1
11	64094	M	WASHER			5	50	2117	S	TILT BRACKET	1
12	75006	S	HANDLE GRIP			2	51	59074	F	CAP SCREW, 5/16-18 x 2-3/4	3
13	59050	F	CAP SCREW, 1/4-20 x 1-1/2			5	52	2173	S	BELT GUARD BRACKET	1
14	65040	F	LOCKNUT, 1/4-20			10	54	2119	S	REVERSE LEVER	1
15	58034	M	ROLL PIN			1	55	2112	M	FORWARD BELT FINGER	1
16	2151	M	IDLER PIVOT ROD			1	56	65056	F	FLANGE WHIZLOCK	1
17	69012	M	CABLE CLIP			2	57	2264	S	UPPER HANDLEBAR	1
18	59004	F	CAP SCREW, 3/8-16 x 1			1	58	2099	M	LOWER HANDLEBAR	2
19	65039	F	LOCKNUT, 3/8-16			3	59	2169	S	RETAINER	1
20	2069	F	SHOULDER SPACER			1	60	2113	S	HANDLE	1
21	2115	S	BELT COVER			1	61	2129	S	HANDLE ADAPTER	1
22	67001	F	COTTER PIN, 3/32 x 3/4			1	62	69079	F	CLUTCH CABLE	1
23	83103	M	TORSION SPRING			1	63	2124	S	REVERSE ROD	1
24	64038	F	WASHER			1	64	502008	S	ENGINE SHEAVE	1
25	2137	S	"U" BOLT			2	65	59053	M	CAP SCREW	2
26	78242	O	REVERSE DECAL	1		1	66	74001	M	SCREW, Self Tapping, No. 10	2
27	2167	S	EYEBOLT			1	67	2111	M	SPACER	2
28	78243	O	SWING HANDLE DECAL			1	68	62010	F	CARRIAGE BOLT, 3/8-16 x 3/4	2
29	602043	S	DASH PANEL	1		1	69	64043	F	WASHER	2
29	2109	S	DASH PANEL			1	70	12086	F	CAP	2
30	2134	M	LINK			1	71	58014	M	ROLL PIN	1
31	73047	S	TRIPLE SHEAVE			1	72	22093	M	ZERK FITTING	1
33	2091	S	CLUTCH CONTROL BRACKET			1	73	2130	S	CLUTCH CABLE BRACKET	1
34	2153	S	IDLER BRACKET			1	74	59080	F	CAP SCREW, 1/4-20 x 5/8	1
35	64057	F	WASHER			6	75	78303	O	COVER DECAL	1
36	70028	M	FASTENER			1	76	78202	O	INSTRUCTION DECAL	1
37	70029	S	RECEPTACLE			1	77	502007	S	IDLER ASSEMBLY Also Includes: 2-Item 67 2-Item 35 1-Items 3, 5, 51.	1
38	70030	S	RETAINING RING			1					
39	59023	F	CAP SCREW, 3/8-16 x 3/4			2					

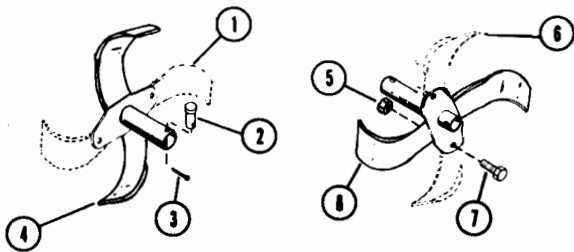
**SUGGESTED PARTS STOCKING CODE**  
 F- Fast Moving Parts    S- Slow Moving Parts  
 M- Medium Moving Parts    O- Customer Order Only



**CAUTION**  
 ORDER PARTS BY PART NUMBER  
 NOT BY REFERENCE NUMBER. ANY  
 PART ORDERED BY REFERENCE  
 NUMBER WILL BE DISREGARDED.

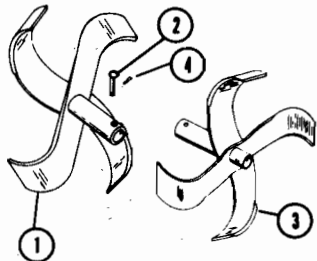
# JET TILLER ATTACHMENTS

## 702992 TINE EXTENSION KIT (Large Tines)



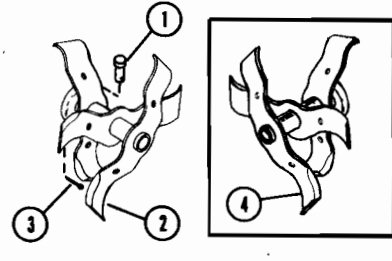
Ref. No.	Part No.	Stock Code	Description	Qty.
1	2084	S	R.H. Tine	1
2	2123	M	Clevis Pin	2
3	67010	M	Hair Pin	2
4	2012	S	R.H. Outer Tine Spool	1
5	65019	M	Locknut	4
6	2085	S	L.H. Tine	1
7	59026	M	Cap Screw	4
8	2013	S	L.H. Outer Tine Spool	1

## 702991 TINE EXTENSION KIT (Small Tines)



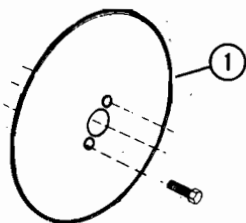
1	2076	S	R.H. Outer Tine Spool	1
2	2123	M	Clevis Pin	2
3	2077	S	L.H. Outer Tine Spool	1
4	67010	M	Hair Pin	2
1	2123	M	Clevis Pin	2
2	2206	S	L.H. Pick Tine Spool	1
3	67010	M	Hain Pin Internal	2
4	2205	S	R.H. Pick Tine Spool	1

## 702997 PICK TINE KIT (Gear Drive Jet Tillers)



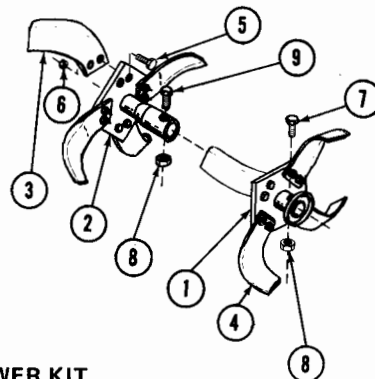
1	2076	S	R.H. Outer Tine Spool	1
2	2123	M	Clevis Pin	2
3	2077	S	L.H. Outer Tine Spool	1
4	67010	M	Hair Pin	2
1	2123	M	Clevis Pin	2
2	2206	S	L.H. Pick Tine Spool	1
3	67010	M	Hain Pin Internal	2
4	2205	S	R.H. Pick Tine Spool	1

## 702008 TINE SHIELD KIT (Jet and Chain Drive)



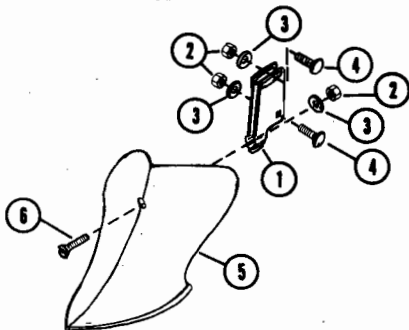
1	02185	S	Inner Tine Spool Hub	2
2	02186	S	Outer Tine Spool Hub	2
3	04171	M	L.H. Knife Tine	8
4	04172	M	R.H. Knife Tine	8
5	59026	M	Cap Screw, HH, 7/16-14 x 1"	32
6	65019	M	Locknut, Hex, 7/16-14	32
7	59027	M	Cap Screw, HH, 3/8-16 x 1-3/4"	4
8	65039	M	Locknut, Hex, 3/8-16	6
9	59068	M	Cap Screw, HH, 3/8-16 x 2"	2

## 702011 RENTAL TINE KIT (Jet and Rocket)



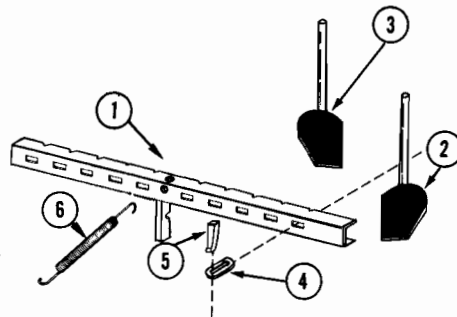
1	702008	S	Tine Shield	2
---	--------	---	-------------	---

## 702998 FURROWER KIT (Gear Drive Jet Tillers)

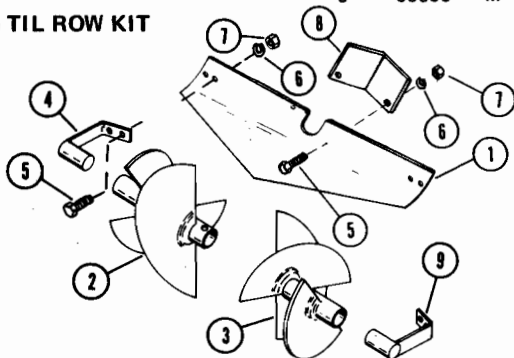


1	2030	S	Furrower Adapter	1
2	65039	M	Locknut	3
3	64002	M	Washer	3
4	62013	M	Carriage Bolt	2
5	702998	O	Furrower (complete unit)	1
6	70003	M	Plow Bolt	1
1	2059	S	Support Bar	1
2	2061	S	Shovel, L.H.	1
3	2062	S	Shovel, R.H.	1
4	2063	S	Keeper	2
5	2064	S	Wedge	2
6	83033	M	Spring	1

## 702993 HILLER-FURROWER KIT



## 702006 TIL ROW KIT

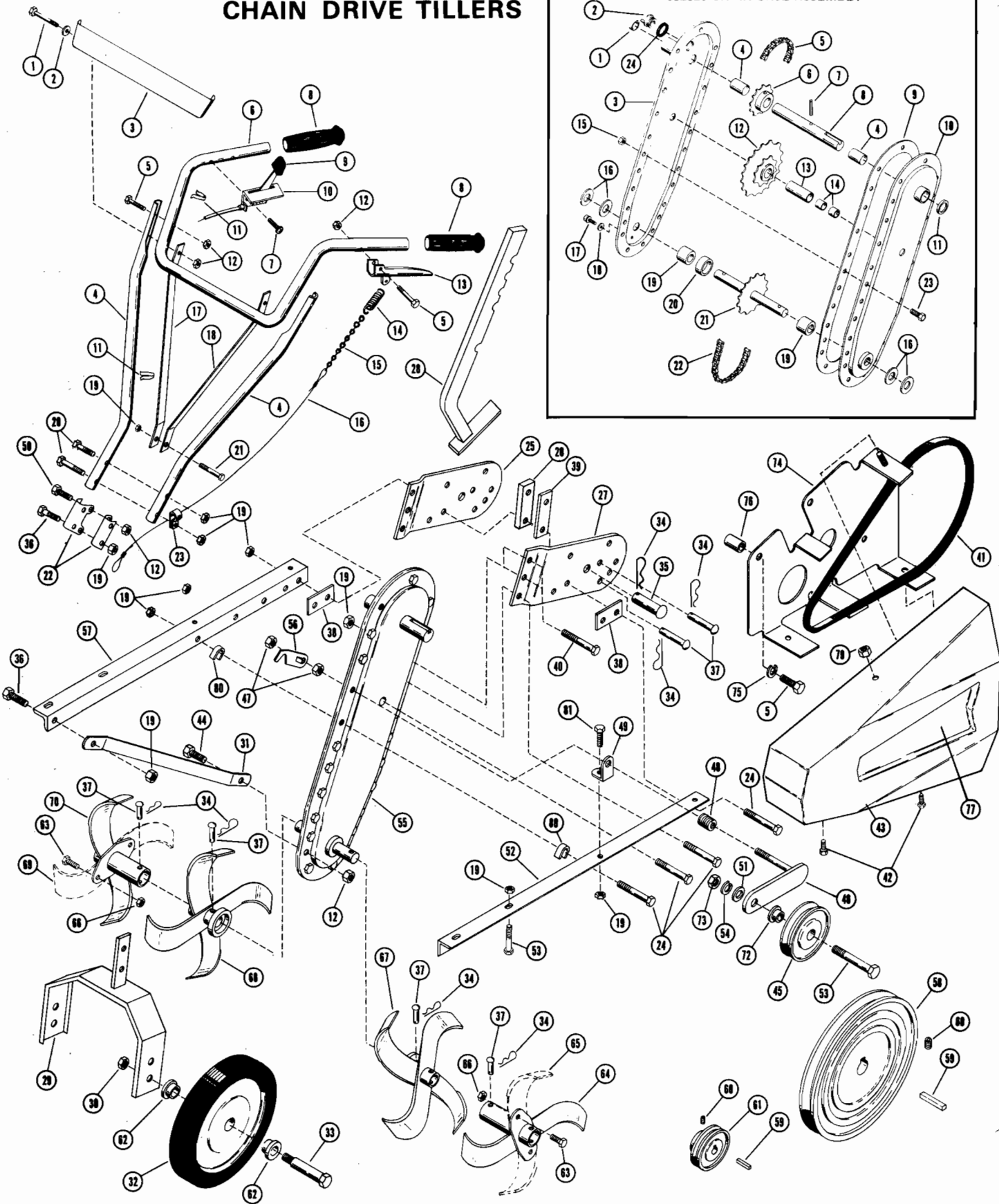
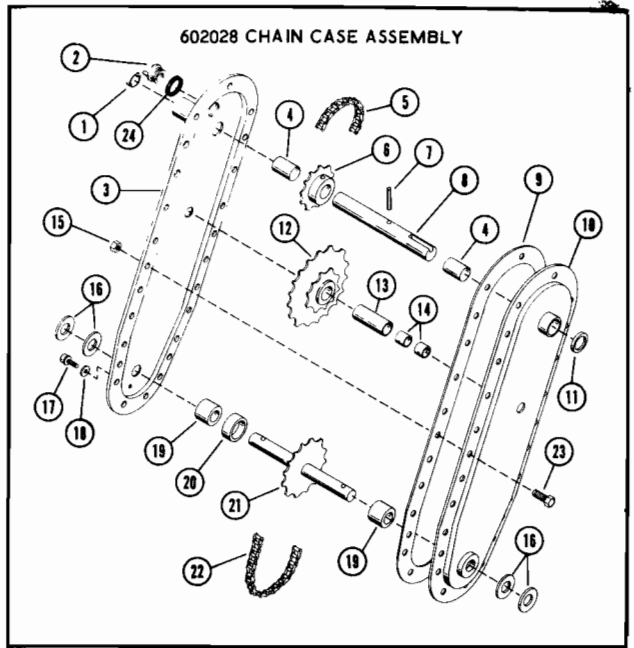


1	2087	O	Back Plate	1
2	2088	S	R.H. Til Blade	1
3	2089	S	L.H. Til Blade	1
4	2090	S	Mounting Bracket R.H.	1
5	59001	M	Cap Screw 1/4 x 3/4	6
6	63002	M	Lockwasher 1/4 Std.	6
7	65032	M	Nut 1/4-20	6
8	2142	S	Adjustment Plate	1
9	2143	S	Mounting Bracket L.H.	1

## SUGGESTED PARTS STOCKING CODE

- F - Fast Moving Parts
- M - Medium Moving Parts
- S - Slow Moving Parts
- O - Customer Order Only

# MODEL 902007 & 902014 CHAIN DRIVE TILLERS



# MODEL 902007 & 902014 CHAIN DRIVE TILLERS

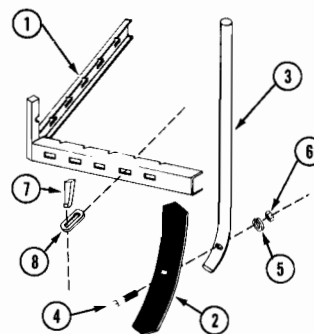
REF. NO.	PART NO.	STOCK CODE	DESCRIPTION	NO. REQ'D.		REF. NO.	PART NO.	STOCK CODE	DESCRIPTION	NO. REQ'D.	
				014	007					014	007
1	59062	M	Cap Screw, Hex Hd. 1/4-20 x 1-3/4	2	2	44	59083	F	Cap Screw 1/4-20 x 1	1	1
2	10196	M	Washer	2	2	45	12132	S	Pulley, Idler	1	1
3	2109	S	Panel	1	1	46	2252	S	Idler Arm	1	1
4	2228	S	Lower Handlebar	2	2	47	65005	M	Nut 3/8-24	2	2
5	59050	M	Cap Screw, Hex Hd. 1/4-20 x 1-1/2	5	6	48	83098	M	Spring, Idler	1	1
6	2421	O	Upper Handlebar	1	1	49	2250	O	Bracket, Idler Arm	1	1
7	74001	M	Screw, Self Tapping, Pan Hd.	2	2	50	59001	M	Cap Screw, Hex Hd. 1/4-20 x 3/4	1	1
8	75006	O	Grip	2	2	51	64002	M	Washer	1	1
9	75019	M	Knob	1	1	52	2243	O	Frame Angle, L.H.	1	1
10	69042	M	Throttle Control	1	1	53	59045	M	Cap Screw, Hex Hd. 5/16-18 x 1-1/2	5	5
10	69039	M	Throttle Control	1	1	54	63003	M	Washer	1	1
11	69012	S	Clip Cable	2	2	55	602028	O	Chain Case Assembly	1	1
12	65040	F	Locknut 1/4-20	7	7	56	2253	S	Lever, Cable	1	1
13	2038	S	Clutch Handle	1	1	57	2242	O	Frame Angle, R.H.	1	1
14	83099	M	Spring, Tension	1	1	58	2255	O	Sheave, Drive	1	1
15	2259	M	Chain, Control	1	1	59	66013	S	Key, Square	2	2
16	2260	M	Cable, Control	1	1	60	60012	M	Setscrew	2	2
17	2230	O	Handlebar Support, R.H.	1	1	61	2420	O	Sheave, Engine	1	1
18	2227	O	Handlebar Support, L.H.	1	1	62	55021	M	Bushing	4	4
19	65042	M	Locknut, 5/16-18	18	18	63	59026	M	Cap Screw, Hex Hd. 7/16-14 x 1	4	4
20	59136	M	Cap Screw, Hex Hd. 5/16-18 x 3	2	2	64	2013	O	Outer Tine Spool, L.H.	1	1
21	59137	M	Cap Screw, Hex Hd. 5/16-18 x 2-1/4	1	1	65	2085	O	Tine, L.H.	1	1
22	2229	O	Spacer	2	2	66	65019	M	Nut, 7/16-14	4	4
23	2258	S	Cable Guide	1	1	67	2209	O	Inner Tine Spool, L.H.	1	1
24	59131	M	Cap Screw, Hex Hd. 5/16-18 x 2-1/2	5	5	68	2135	O	Inner Tine Spool, R.H.	1	1
25	2245	O	Bracket, Wheel Mtg. R.H.	1	1	69	2084	O	Tine R.H.	1	1
26	2248	O	Spacer Block, thick	1	1	70	2012	O	Outer Tine Spool, R.H.	1	1
27	2246	O	Bracket, Wheel Mtg. L.H.	1	1						
28	2256	O	Depth Bar	1	1	72	12131	S	Spacer	1	1
29	2251	O	Yoke, Wheel Mtg.	1	1	73	65015	M	Nut 5/16-18	1	1
30	65039	M	Locknut 3/8-16	2	2	74	2225	S	Belt Retainer	1	1
31	2138	O	Engine Support	2	2	74	2179	S	Belt Retainer	1	1
32	71040	S	Wheel	2	2	75	63002	M	Lockwasher 1/4 Std.	2	3
33	2404	M	Bolt, Wheel Mtg.	2	2	76	2231	S	Spacer	2	3
34	67013	M	Hair Pin	7	7	76	10262	S	Spacer	2	
35	2257	F	Clevis Pin	1	1	77	78234	O	Belt Cover Decal	1	1
36	59022	M	Cap Screw 5/16-18 x 3/4	3	3	78	78305	O	Decal (4 HP Tiller On Engine)	1	1
37	2123	F	Clevis Pin	6	6	79	65066	M	Nut 1/4-20	1	1
38	2244	O	Shim, Wheel Bracket	2	2	80	2249	O	U Spacer	2	2
39	2247	O	Spacer Block, thin	1	1	81	59003	M	Cap Screw 5/16-18 x 1	1	1
40	59069	M	Cap Screw, Hex Hd. 5/16-18 x 1 1/4	2	2						
41	72073	F	Drive Belt	1	1						
42	70015	M	Whizlock Screw	2	2						
43	2148	O	Belt Cover	1	1						

\*Order engine and or engine replacement parts from respective engine service central.

## 602028 CHAIN CASE ASSEMBLY

REF. NO.	PART NO.	STOCK CODE	DESCRIPTION	NO. REQ'D.
1	77008	O	Expansion Plug 13/16	1
2	75043	S	Oil Fill Plug	1
3	2239	O	Chain Case R.H.	1
4	55068	S	Bushing 5/8" Bronze	2
5	2235	O	Chain #35	1
6	2236	O	Sprocket 11 Tooth	1
7	58007	S	Roll Pin 1/4 x 1-1/4	1
8	2237	O	Input Shaft	1
9	2240	S	Gasket, Chain Case	1
10	2238	O	Chain Case, L.H.	1
11	56073	S	Oil Seal	1
12	2234	O	Idler Sprocket	1
13	54100	S	Bearing Race	1
14	54099	S	Needle Bearing	2
15	65092	S	Nut, Keps	17
16	56072	S	Oil Seal	4
17	74038	S	Tapetite	1
18	2241	S	Gasket, Check Plug	1
19	54098	S	Needle Bearing	2
20	2232	O	Spacer	1
21	2126	O	Tine Shaft	1
22	2233	O	Chain #50	1
23	70034	S	Screw, Sems	17
24	2265	S	Gasket, Oil Fill	1

## DRAG CULTIVATOR MODEL NO. 702009 (FOR CHAIN DRIVE TILLER)



REF. NO.	PART NO.	STOCK CODE	DESCRIPTION	NO. REQ'D
1	002160	S	Support Bar	1
2	002161	S	Shovel, Reversible	4
3	002162	S	Shovel, Standard	4
4	070002	M	Plow Bolt	4
5	063004	M	Lockwasher	4
6	065018	M	Nut	4
7	002064	S	Wedge	4
8	002063	S	Keeper	4

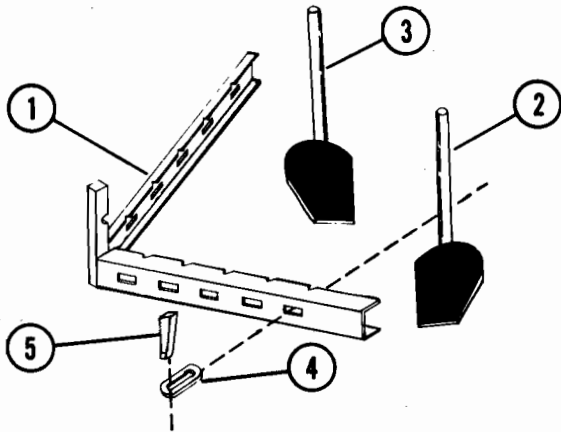
### SUGGESTED PARTS STOCKING CODE

- F - Fast Moving Parts
- M - Medium Moving Parts
- S - Slow Moving Parts
- O - Customer Order Only

# CHAIN DRIVE ATTACHMENTS

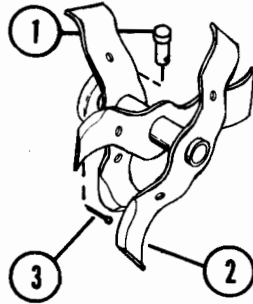
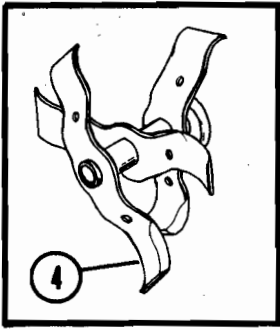
702992 TINE EXTENSION KIT (Large Tines) -SEE JET TILLER ATTACHMENT PAGE

## 702010 HILLER-FURROWER KIT



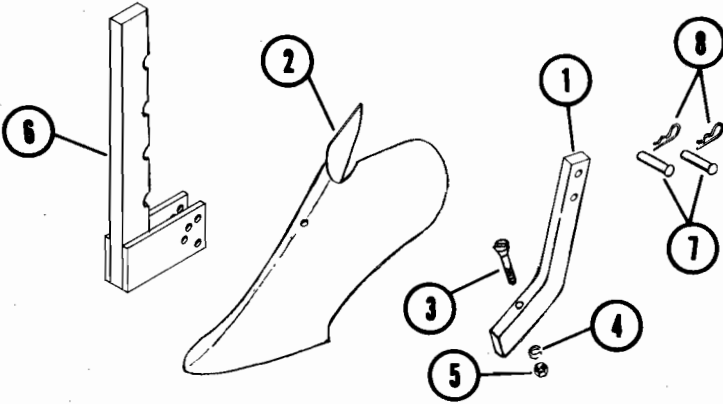
Ref. No.	Part No.	Stock Code	Description	Qty.
1	2160	S	Support Bar	1
2	2061	S	Shovel, L.H.	1
3	2062	S	Shovel, R.H.	1
4	2063	S	Keeper	2
5	2064	S	Wedge	2

## 702005 PICK TINE KIT



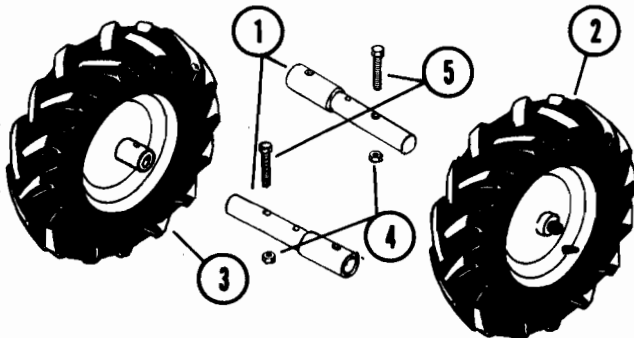
1	2123	M	Clevis Pin	2
2	2140	S	L.H. Pick Tine Spool	1
3	67010	M	Hair Pin Internal	2
4	2141	S	R.H. Pick Tine Spool	1

## 702002 FURROWER KIT



1	2263	S	Depth Bar	1
2	2262	S	Furrower	1
3	70035	S	Plow Bolt	1
4	63004	M	Lockwasher	1
5	65020	M	Nut	1
6	2254	S	Attachment Fitting	1
7	2123	M	Clevis Pin	2
8	67013	M	Hair Pin	2

## 702007 WHEEL KIT (For Chain Drive Tiller 902007)



1	2145	S	Wheel Adapter	2
2	601989	S	L.H. Tire & Wheel Assy	1
3	601996	S	R.H. Tire & Wheel Assy	1
Consists of:				
	71036	S	Tire	
	71037	S	Tube	
	71047	S	Wheel Rim	
4	065042	M	Locknut	2
5	059057	M	Cap Screw	2

### SUGGESTED PARTS STOCKING CODE

- F - Fast Moving Parts
- M - Medium Moving Parts
- S - Slow Moving Parts
- O - Customer Order Only