

PARTS MANUAL

PRICE \$.25

SERIAL NUMBER

MODEL 902002 - 3 H.P. BRIGGS
SERIAL NO. 013212 AND UP

MODEL 902004 - 4 H.P. BRIGGS W/REV.
SERIAL NO. 034857 AND UP

MODEL 902008 - 4 H.P. BRIGGS
SERIAL NO. 007274 AND UP

MODEL 902010 - 4 H.P. TEC.
SERIAL NO. 000101 AND UP

MODEL 902013 - 4 H.P. TEC. W/REV.
SERIAL NO. 000101 AND UP

MODEL 902009 - 5 H.P. TEC. W/REV.
SERIAL NO. 000101 AND UP

MODEL 902012 - 6 H.P. TEC.
SWING HANDLE W/REV.
SERIAL NO. 000101 AND UP

MODEL 902007 - CHAIN DRIVE
BRIGGS - 4 H.P.
SERIAL NUMBER 003001 AND UP

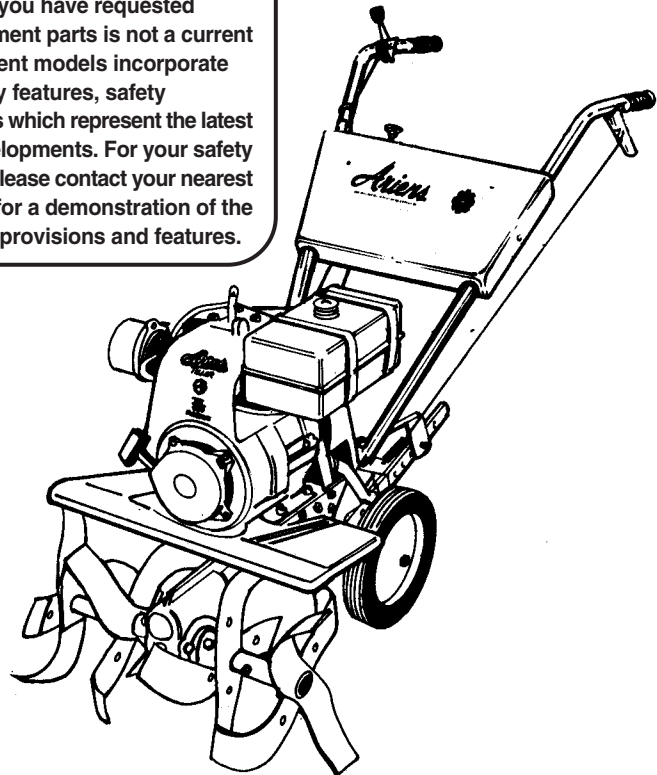
MODEL 902014 - CHAIN DRIVE
TECUMSEH - 4 H.P.
SERIAL NUMBER 00101 AND UP

PM-2-75

Ariens ROTARY TILLERS

▲ SAFETY MESSAGE ▲

The product for which you have requested information or replacement parts is not a current product. The replacement models incorporate product designs, safety features, safety instructions or warnings which represent the latest "State Of The Art" developments. For your safety and those around you please contact your nearest Ariens/Gravely Dealer for a demonstration of the current product safety provisions and features.



WARRANTY

Ariens Company hereby warrants to the original retail purchaser all new products of its own manufacture to be free from defects in material and workmanship, for a period of one year except when used commercially or for rental purposes in which case the warranty period shall be for 45 days from date of original purchase, subject to the following exceptions:

1. Engine parts and service must be handled by the respective engine manufacturer.
2. A 90 day warranty will be extended on belts, tires, throttle controls, or any other items subject to normal wear:
3. No warranty is extended to any equipment which has been misused, neglected or damaged by accident. Ariens Company shall not be responsible for damage in transit or handling by any common carrier, and under no circumstances, within or without the warranty period, will the Company be liable for damages for loss of use, or damages resulting from delay, or any consequential damages.

It is the consumer's responsibility for: (1) Normal maintenance as greasing, gear case lubrication, minor adjustments, etc. (2) Transportation of any Ariens product to and from the place the warranty work is performed.

Ariens warranty WILL NOT APPLY to any products repaired or altered by anyone other than an Authorized Service Distributor or Authorized Service Dealer.

Any transportation charges incurred on any equipment claimed defective, which shall include time and expense of the distributor or dealer for pickup, and/or return of the equipment, shall be borne by the purchaser.

Ariens Company reserves the right to incorporate any changes in design into its products without obligation to make such changes on units previously manufactured.

DISCLAIMER OF FURTHER WARRANTY

There are no warranties, expressed or implied, except as set forth above. There is no warranty of merchantability. There are no warranties which extend beyond the description of the product contained herein. In no event shall the company be liable for indirect, special or consequential damages (such as loss of anticipated profits) in connection with the retail purchaser's use of the product.

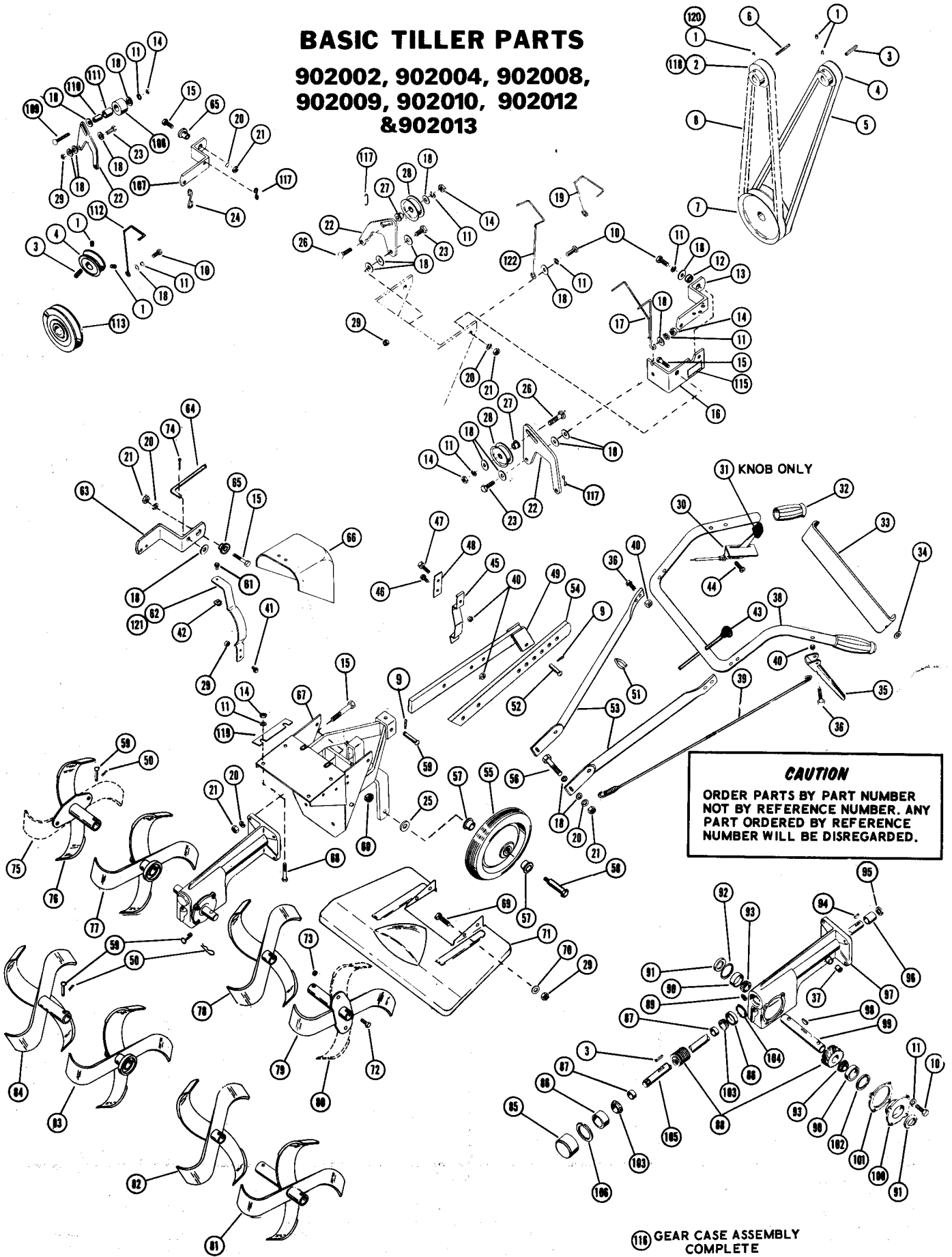
Ariens

ARIENS COMPANY

BRILLION, WIS. 54110

BASIC TILLER PARTS

902002, 902004, 902008,
902009, 902010, 902012
& 902013



CAUTION
ORDER PARTS BY PART NUMBER
NOT BY REFERENCE NUMBER. ANY
PART ORDERED BY REFERENCE
NUMBER WILL BE DISREGARDED.

⑪ GEAR CASE ASSEMBLY COMPLETE

BASIC TILLER PARTS 902002, 902004, 902008, 902009, 902010, 902012 & 902013

REF. PART NO.	STOCK CODE	DESCRIPTION	NO. REQUIRED						REF. PART NO.	STOCK CODE	DESCRIPTION	NO. REQUIRED						
			902013	902010	902002	902008	902004	902009				902012	902013	902010	902002	902008	902004	902009
1	60014	S Setscrew 5/16-18 x 3/8	2					2	62	2174	S Belt Cover Bracket	1	1	1	1	1	1	
2	502003	M Reverse Sheave	1				1	1	63	2410	M Clutch Lever	1				1	1	
3	66013	M Key 3/16 Square x 1		2	2	2	2	2	1	64	2057	S Reverse Rod	1				1	1
4	502005	M Engine Sheave	1					1		65	2069	F Shoulder Spacer	1	1	1	1	1	1
4	502006	M Engine Sheave		1	1	1	1	1		66	2115	S Belt Cover	1	1	1	1	1	1
5	72056	F Belt	1	1	1	1	1	1	1	67	2301	S Frame	1	1	1	1	1	1
6	66015	M Key #5 Woodruff	1				1	1	1	68	59073	F Capscrew 5/16-18 x 1-3/4	4	4	4	4	4	4
7	73039	M Double Sheave	1				1	1		68	59003	F Capscrew 5/16-18 x 1 H.H.						4
8	72085	F Belt Reverse	1				1	1		69	59002	F Cap Screw 5/16-18 x 5/8	4				4	4
8	72099	F Belt Reverse							1	70	64007	F Washer	4				4	4
9	67008	F Hairpin Cotter	2	2	2	2	2	2	2	71	2419	S Tine Hood	1				1	1
10	59022	F Cap Screw 5/16-18 x 3/4	5	5	5	5	6	5	5	72	59026	F Cap Screw 7/16-14 x 1	4				4	4
11	63003	F Lockwasher 5/16	13	10	10	10	13	13	10	73	65019	F Locknut 7/16-14	4				4	4
12	6071	M Bushing	1				1	1		74	67001	F Cotter Pin 3/32 x 3/4	1				1	1
13	2171	M Clutch Lever	1				1	1		75	2084	M R.H. Tine	1				1	1
14	65015	F Nut 5/16-18	7	5	5	5	7	7	5	76	2012	M R.H. Outer Tine Spool	1				1	1
15	59005	F Cap Screw 3/8-16 x 1-1/4	6	5	5	5	6	6	4	77	2010	M R.H. Inner Tine Spool	1				1	1
16	2405	M Forward Clutch Bracket	1				1	1		78	2011	M L.H. Inner Tine Spool	1				1	1
17	2406	M Belt Finger	1				1	1		79	2013	M L.H. Outer Tine Spool	1				1	1
18	64002	F Washer 5/16	16	10	10	10	16	16	5	80	2085	M L.H. Tine	1				1	1
19	2165	M Belt Finger - Reverse	1				1	1		81	2077	M L.H. Outer Tine Spool		1	1	1		
20	63004	F Lockwasher 3/8	8	8	8	8	8	8	4	82	2075	M L.H. Inner Tine Spool		1	1	1		
21	65018	F Nut 3/8-16	8	8	8	8	8	8	4	83	2074	M R.H. Inner Tine Spool		1	1	1		
22	2401	F Idler Bracket	2	1	1	1	2	2	1	84	2076	M R.H. Outer Tine Spool		1	1	1		
23	59069	F Cap Screw 5/16-18 x 1-1/4	2	1	1	1	2	2	1	85	4037	M Dust Cap	1	1	1	1	1	1
24	2146	M Link	1	1	1	1	1	1		86	54044	F Bearing Cup	2	2	2	2	2	2
25	64003	F Washer 1/2 Wrought	2	2	2	2	2	2		87	2005	F Spacer	2	2	2	2	2	2
26	62022	F Carriage Bolt 5/16-18 x 1-3/8	2				2	2	1	88	502001	F Worm & Worm Gear (Sold in pairs only)	1	1	1	1	1	1
27	12131	F Bearing Spacer	2				2	2	1	89	1138	S Pipe Plug 3/8 Square Head	1	1	1	1	1	1
28	12132	F Idler	2				2	2	1	90	54070	F Bearing Cup	2	2	2	2	2	2
29	65042	F Locknut 5/16-18	7	3	3	3	7	7	5	91	56066	F Seal	2	2	2	2	2	2
30	69039	F Throttle Control	1	1			1	1	1	92	57027	F Snap Ring	1	1	1	1	1	1
30	69041	F Throttle Control					1	1		93	54069	F Bearing Cone	2	2	2	2	2	2
31	75019	M Knob	1	1			1	1	1	94	66001	M Key #11 Woodruff	1	1	1	1	1	1
32	75006	M Handle Grip	2	2	2	2	2	2		95	56043	M Seal	1	1	1	1	1	1
33	2109	S Handlebar Panel	1	1	1	1	1	1		96	54022	F Needle Bearing	1	1	1	1	1	1
34	10196	M Handlebar Washer	2	2	2	2	2	2		97	2014	S Gear Case	1	1	1	1	1	1
35	2038	F Clutch Handle	1	1	1	1	1	1		98	66008	M Key "A" Woodruff	1	1	1	1	1	1
36	59050	F Cap Screw 1/4-20 x 1-1/2	5	5	5	5	5	5		99	2007	M Tine Shaft	1	1	1	1	1	1
37	2009	S Breather	1	1	1	1	1	1	1	100	2015	S Flange	1	1	1	1	1	1
38	2421	S Upper Handlebar, Painted	1	1	1	1	1	1		101	2008	F Gasket	1	1	1	1	1	1
39	83008	M Clutch Spring	1	1	1	1	1	1		102	602983	F Snap Ring - Adjusting	1	1	1	1	1	1
40	65040	F Locknut 1/4-20	7	7	7	7	7	7	2	103	54045	F Bearing Cone	2	2	2	2	2	2
41	59003	F Cap Screw 5/16-18 x 1	2	2	2	2	2	2		104	57032	F Snap Ring	1	1	1	1	1	1
42	65085	M Speed Nut	1	1	1	1	1	1	1	105	2003	F Worm Shaft	1	1	1	1	1	1
43	75015	M Shift Ball	1				1	1	1	106	602982	F Snap Ring - Adjusting Kit	1	1	1	1	1	1
44	74001	M Self-Tapping Screw #10 Pan H	2	2	2	2	2	2		107	2170	S Clutch Lever	1	1	1	1	1	1
45	2216	F Spring Clip	1	1	1	1	1	1	1	108	2025	M Idler	1	1	1	1	1	1
46	59001	F Cap Screw 1/4-20 x 3/4	1	1	1	1	1	1	1	109	62018	F Carriage Bolt	1	1	1	1	1	1
47	59028	F Cap Screw 1/4-20 x 1/2	1	1	1	1	1	1	1	110	2026	M Spacer	1	1	1	1	1	1
48	2217	M Spring Support	1	1	1	1	1	1	1	111	55016	M Bushing	1	1	1	1	1	1
49	2122	M Stick Bracket	1	1	1	1	1	1	1	112	2302	M Belt Finger	1	1	1	1	1	1
50	67010	F Hair Pin	4	4	4	4	4	4	4	113	73040	M Sheave	1	1	1	1	1	1
51	69012	M Cable Clip	2	2	2	2	2	2		115	78005	O Jet Patent Label, Reverse	1				1	1
52	2048	F Clevis Pin 7/16	1	1	1	1	1	1	1	116	602999	O Gear Case Assembly,	1	1	1	1	1	1
53	2034	M Lower Handlebar, Painted	2	2	2	2	2	2		117	2172	M Link	2	1	1	1	2	2
54	2307	M Depth Stick	1	1	1	1	1	1	1	118	502004	S Reverse Sheave						1
55	71040	F Wheel (includes bushings)	2				2	2	2	119	2157	F Shim	4	4	4	4	4	4
55	71054	M Wheel (includes bushings)	2	2	2	2	2	2		120	60004	S Setscrew	2	2	2	2	4	2
56	59004	F Cap Screw 3/8-16 x 1	2	3	3	3	2	2		121	2173	S Belt Cover Bracket						1
57	55021	F Wheel Bushing	4	4	4	4	4	4	4	122	2408	M Belt Finger						1
58	2404	F Wheel Bolt	2	2	2	2	2	2	2									
59	2123	F Clevis Pin	5	5	5	5	5	5	3									
60	65039	F Locknut 3/8-16	2	2	2	2	2	2	2									
61	59039	F Cap Screw 5/16-18 x 1/2	1	1	1	1	1	1	1									

SUGGESTED PARTS STOCKING CODE

- F - Fast Moving Parts
- M - Medium Moving Parts
- S - Slow Moving Parts
- O - Customer Order Only

ENGINE SPECIFICATIONS:

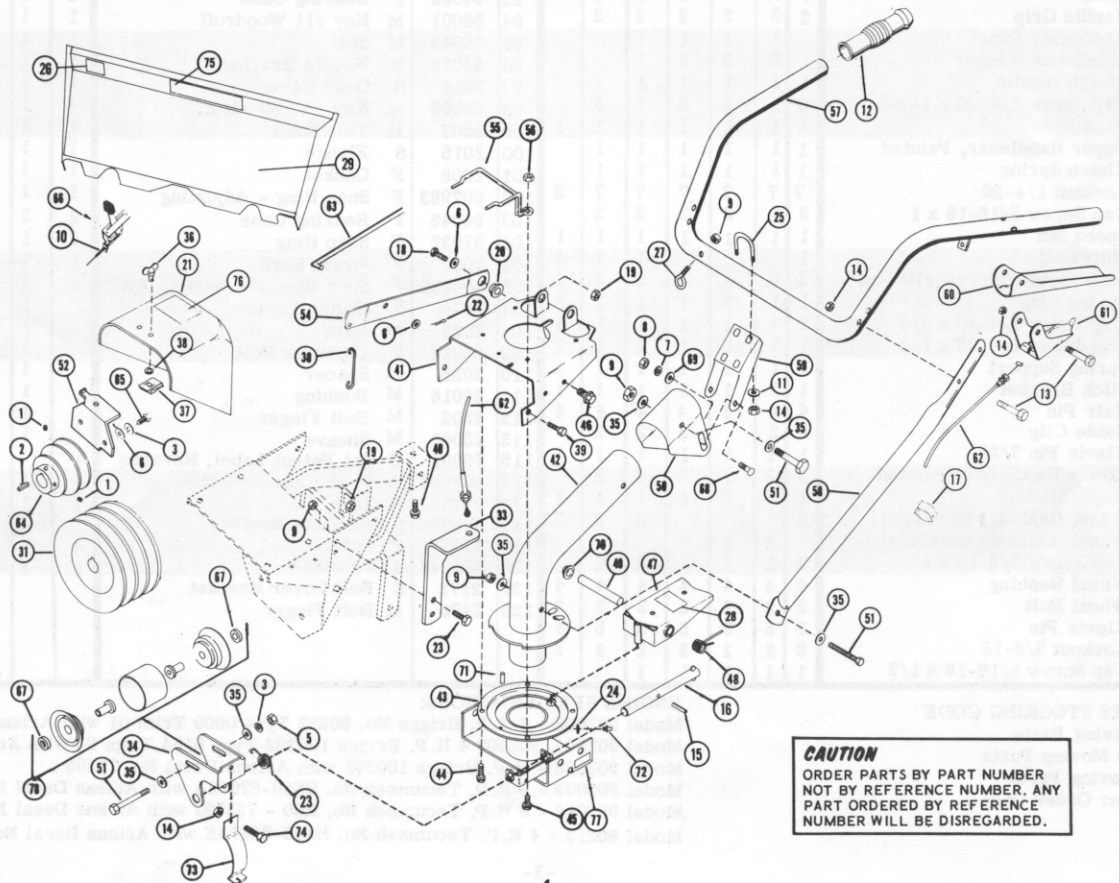
- Model 902002 - 3 H.P. Briggs No. 80292 Type 0600 Trim 01 with Ariens Decal No. 78304
- Model 902004, 902007 4 H.P. Briggs 100292 Type 0154 Trim 02 with Ariens Decal No. 78305
- Model 902008 4 H.P. Briggs 100202 with Ariens Decal No. 78305
- Model 902009 - 5 H.P. Tecumseh No. HS50-67082A with Ariens Decal No. 78306
- Model 902012 - 6 H.P. Tecumseh No. H60 - 75379J with Ariens Decal No. 78307
- Model 90213 - 4 H.P. Tecumseh No. HS40-55476E with Ariens Decal No. 78305

SWING HANDELBAR AND DASH PANEL 902009, 902012 & 902013

REF. PART NO.	STOCK NO.	DESCRIPTION	NO. REQUIRED			REF. PART NO.	STOCK NO.	DESCRIPTION	NO. REQUIRED			
			902013	902009	902012				902013	902009	902012	
1	60004	S	Setscrew 5/16-18 x 3/8			2	41	S	Swivel Bracket			1
2	66013	M	Key 3/16 Square x 1			1	42	S	Swivel			1
3	63003	F	Lockwasher 5/16			3	43	S	Swivel Retainer			1
5	65015	F	Nut 5/16-18			1	44	F	Flange Whizlock Screw			3
6	64002	F	Washer 5/16 Wrought			4	45	F	Flange Whizlock Screw			2
7	63004	F	Lockwasher 3/8			2	46	F	Flange Whizlock Screw			4
8	65018	F	Nut 3/8-16			2	47	S	Release Pedal			1
9	65042	F	Locknut 5/16-18			4	48	M	Torsion Spring			2
10	69042	F	Throttle Control			1	49	S	Pin			1
11	64094	M	Washer			4	50	S	Tilt Bracket			1
12	75006	S	Handle Grip			2	51	F	Cap Screw 5/16-18 x 2-3/4			3
13	59050	F	Cap Screw 1/4-20 x 1-1/2			5	52	S	Belt Guard Bracket			1
14	65040	F	Locknut 1/4-20	9	9	10	54	S	Reverse Lever			1
15	58034	M	Roll Pin			1	55	M	Forward Belt Finger			1
16	2151	M	Idler Pivot Rod			1	56	F	Flange Whizlock			1
17	69012	M	Cable Clip			2	57	S	Upper Handlebar			1
18	56004	F	Cap Screw 3/8-16 x 1			1	58	M	Lower Handlebar			1
19	65039	F	Locknut 3/8-16			3	59	S	Retainer			1
20	2069	F	Shoulder Spacer			1	60	S	Handle			1
21	2115	S	Belt Cover			1	61	S	Handle Adapter			1
22	67001	F	Cotter Pin 3/32 x 3/4			1	62	F	Clutch Cable			1
23	83103	M	Torsion Spring			1	63	S	Reverse Rod			1
24	64094	F	Washer			5	64	S	Engine Sheave			1
25	2137	S	"U" Bolt	2	2	2	65	M	Capscrew			2
26	78242	O	Reverse Decal			1	66	M	Screw, Self-tapping, #10	2	2	2
27	2167	S	Eyebolt			1	67	M	Spacer			2
28	78243	O	Swing Handle Decal			1	68	F	Carriage Bolt 3/8-16 x 3/4			2
29	602043	S	Dash Panel		1	1	69	F	Washer			2
29	2109	S	Dash Panel	1			70	F	Cap			2
30	2134	M	Link	1	1	1	71	M	Roll Pin			1
31	73047	S	Triple Sheave			1	72	M	Zerk Fitting			1
33	2091	S	Clutch Control Bracket			1	73	S	Clutch Cable Bracket			1
34	2153	S	Idler Bracket			1	74	F	Cap Screw 1/4-20 x 5/8			1
35	64057	F	Washer			6	75	O	Cover Decal	1	1	1
36	70028	M	Fastener			1	76	O	Instruction Decal			1
37	70029	S	Receptacle			1	77	O	Jet Patent Label			1
38	70030	S	Retaining Ring			1	78	S	Idler Assembly. Includes;			1
39	59023	F	Cap Screw 3/8-16 x 3/4			2			2-Item 67			
40	70010	F	Flange Whizlock Screw			1			2-Item 35			
									1-Items 3, 5, 51.			

SUGGESTED PARTS STOCKING CODE

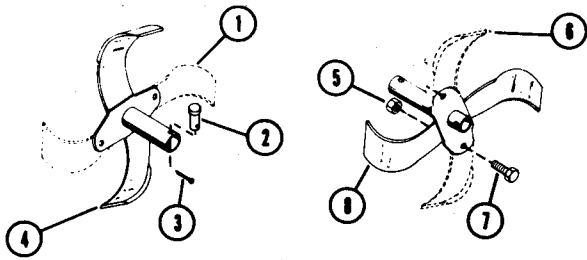
- F - Fast Moving Parts
- M - Medium Moving Parts
- S - Slow Moving Parts
- O - Customer Order Only



CAUTION
 ORDER PARTS BY PART NUMBER
 NOT BY REFERENCE NUMBER. ANY
 PART ORDERED BY REFERENCE
 NUMBER WILL BE DISREGARDED.

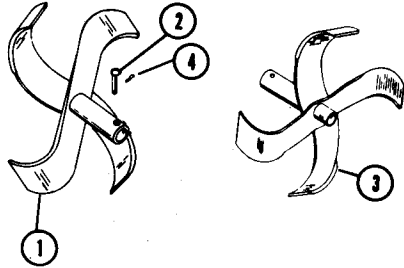
JET TILLER ATTACHMENTS

702992 TINE EXTENSION KIT (Large Tines)



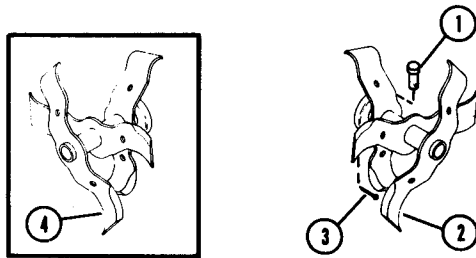
Ref. No.	Part No.	Stock Code	Description	Qty.
1	2084	S	R.H. Tine	1
2	2123	M	Clevis Pin	2
3	67010	M	Hair Pin	2
4	2012	S	R.H. Outer Tine Spool	1
5	65019	M	Locknut	4
6	2085	S	L.H. Tine	1
7	59026	M	Cap Screw	4
8	2013	S	L.H. Outer Tine Spool	1

702991 TINE EXTENSION KIT (Small Tines)



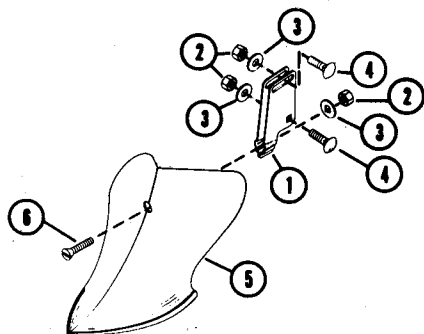
1	2076	S	R.H. Outer Tine Spool	1
2	2123	M	Clevis Pin	2
3	2077	S	L.H. Outer Tine Spool	1
4	67010	M	Hair Pin	2

702997 PICK TINE KIT (Gear Drive Jet Tillers)



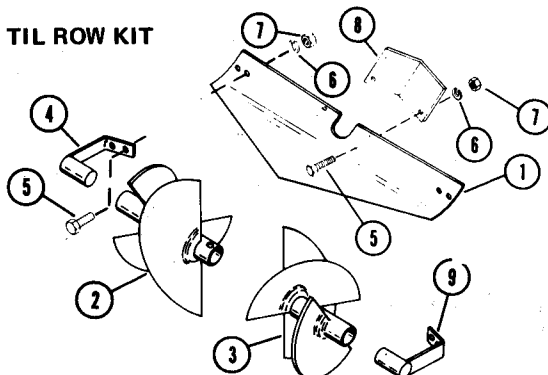
1	2123	M	Clevis Pin	2
2	2206	S	L.H. Pick Tine Spool	1
3	67010	M	Hain Pin Internal	2
4	2205	S	R.H. Pick Tine Spool	1

702998 FURROWER KIT (Gear Drive Jet Tillers)



1	2030	S	Furrower Adapter	1
2	65036	M	Locknut	3
3	64002	M	Washer	3
4	62013	M	Carriage Bolt	2
5	702998	O	Furrower (complete unit)	1
6	70003	M	Plow Bolt	1

702006 TIL ROW KIT

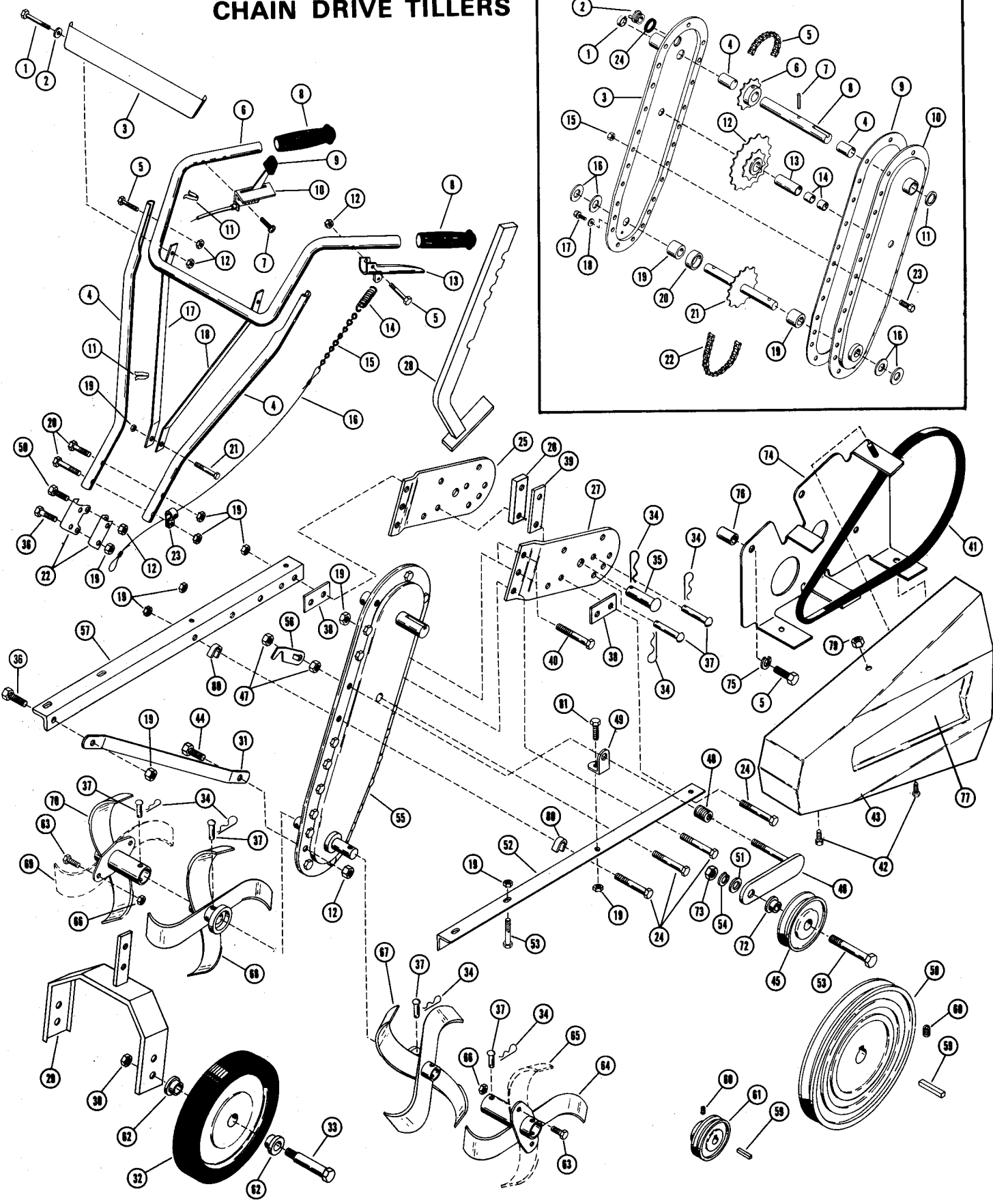
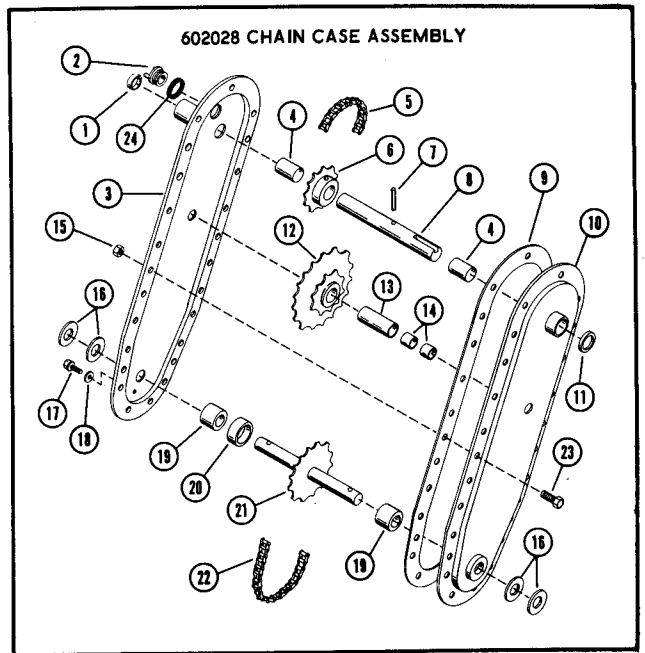


1	2087	O	Back Plate	1
2	2088	S	R.H. Til Blade	1
3	2089	S	L.H. Til Blade	1
4	2090	S	Mounting Bracket R.H.	1
5	59001	M	Cap Screw 1/4 x 3/4	6
6	63002	M	Lockwasher 1/4 Std.	6
7	65032	M	Nut 1/4-20	6
8	2142	S	Adjustment Plate	1
9	2143	S	Mounting Bracket L.H.	1

SUGGESTED PARTS STOCKING CODE

- F - Fast Moving Parts
- M - Medium Moving Parts
- S - Slow Moving Parts
- O - Customer Order Only

MODEL 902007 & 902014 CHAIN DRIVE TILLERS



MODEL 902007 & 902014 CHAIN DRIVE TILLERS

REF. NO.	PART NO.	STOCK CODE	DESCRIPTION	NO. REQ'D.		REF. NO.	PART NO.	STOCK CODE	DESCRIPTION	NO. REQ'D.	
				014	007					014	007
1	59062	M	Cap Screw, Hex Hd. 1/4-20 x 1-3/4	2	2	44	59083	F	Cap Screw 1/4-20 x 1	1	1
2	10196	M	Washer	2	2	45	12132	S	Pulley, Idler	1	1
3	2109	S	Panel	1	1	46	2252	S	Idler Arm	1	1
4	2228	S	Lower Handlebar	2	2	47	65005	M	Nut 3/8-24	2	2
5	59050	M	Cap Screw, Hex Hd. 1/4-20 x 1-1/2	5	6	48	83098	M	Spring, Idler	1	1
6	2421	O	Upper Handlebar	1	1	49	2250	O	Bracket, Idler Arm	1	1
7	74001	M	Screw, Self Tapping, Pan Hd.	2	2	50	59001	M	Cap Screw, Hex Hd. 1/4-20 x 3/4	1	1
8	75006	O	Grip	2	2	51	64002	M	Washer	1	1
9	75019	M	Knob	1	1	52	2243	O	Frame Angle, L.H.	1	1
10	69042	M	Throttle Control	1	1	53	59045	M	Cap Screw, Hex Hd. 5/16-18 x 1-1/2	5	5
10	69039	M	Throttle Control	1	1	54	83003	M	Washer	1	1
11	69012	S	Clip Cable	2	2	55	602028	O	Chain Case Assembly	1	1
12	65040	F	Locknut 1/4-20	7	7	56	2253	S	Lever, Cable	1	1
13	2038	S	Clutch Handle	1	1	57	2242	O	Frame Angle, R.H.	1	1
14	83099	M	Spring, Tension	1	1	58	2255	O	Sheave, Drive	1	1
15	2259	M	Chain, Control	1	1	59	66013	S	Key, Square	2	2
16	2260	M	Cable, Control	1	1	60	60012	M	Setscrew	2	2
17	2230	O	Handlebar Support, R.H.	1	1	61	2420	O	Sheave, Engine	1	1
18	2227	O	Handlebar Support, L.H.	1	1	62	55021	M	Bushing	4	4
19	65042	M	Locknut, 5/16-18	18	18	63	59026	M	Cap Screw, Hex Hd. 7/16-14 x 1	4	4
20	59136	M	Cap Screw, Hex Hd. 5/16-18 x 3	2	2	64	2013	O	Outer Tine Spool, L.H.	1	1
21	59137	M	Cap Screw, Hex Hd. 5/16-18 x 2-1/4	1	1	65	2085	O	Tine, L.H.	1	1
22	2229	O	Spacer	2	2	66	65019	M	Nut, 7/16-14	4	4
23	2258	S	Cable Guide	1	1	67	2209	O	Inner Tine Spool, L.H.	1	1
24	59131	M	Cap Screw, Hex Hd. 5/16-18 x 2-1/2	5	5	68	2135	O	Inner Tine Spool, R.H.	1	1
25	2245	O	Bracket, Wheel Mtg. R.H.	1	1	69	2084	O	Tine R.H.	1	1
26	2248	O	Spacer Block, thick	1	1	70	2012	O	Outer Tine Spool, R.H.	1	1
27	2246	O	Bracket, Wheel Mtg. L.H.	1	1						
28	2256	O	Depth Bar	1	1	72	12131	S	Spacer	1	1
29	2251	O	Yoke, Wheel Mtg.	1	1	73	65015	M	Nut 5/16-18	1	1
30	65039	M	Locknut 3/8-16	2	2	74	2225	S	Belt Retainer	1	1
31	2138	O	Engine Support	2	2	74	2179	S	Belt Retainer	1	1
32	71040	S	Wheel	2	2	75	63002	M	Lockwasher 1/4 Std.	2	3
33	2404	M	Bolt, Wheel Mtg.	2	2	76	2231	S	Spacer	2	3
34	67013	M	Hair Pin	7	7	76	10262	S	Spacer	2	2
35	2257	F	Clevis Pin	1	1	77	78234	O	Belt Cover Decal	1	1
36	59022	M	Cap Screw 5/16-18 x 3/4	3	3	78	78305	O	Decal (4 HP Tiller On Engine)	1	1
37	2123	F	Clevis Pin	6	6	79	65056	M	Nut 1/4-20	1	1
38	2244	O	Shim, Wheel Bracket	2	2	80	2249	O	U Spacer	2	2
39	2247	O	Spacer Block, thin	1	1	81	59003	M	Cap Screw 5/16-18 x 1	1	1
40	59069	M	Cap Screw, Hex Hd. 5/16-18 x 1 1/4	2	2				NOT ILLUSTRATED		
41	72073	F	Drive Belt	1	1				*4 HP Engine (Briggs 100292-0154-02)		1
42	70015	M	Whizlock Screw	2	2				*4 HP Engine (Tecumseh HS40-55475E)		1
43	2148	O	Belt Cover	1	1						

*Order engine and or engine replacement parts from respective engine service central.

602028 CHAIN CASE ASSEMBLY

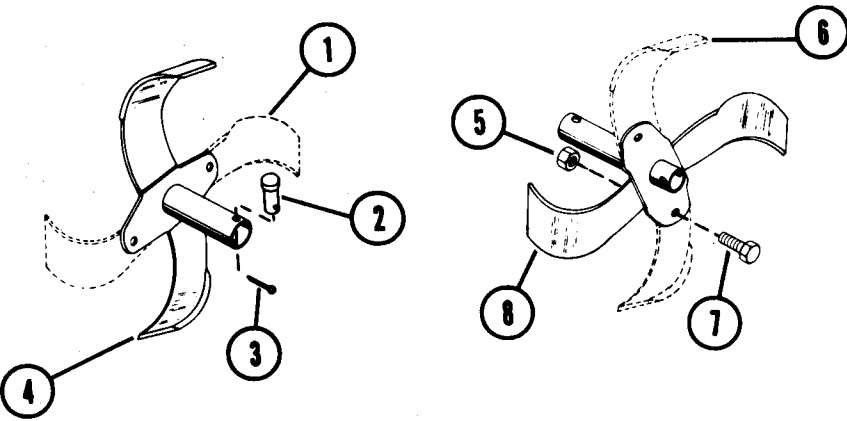
REF. NO.	PART NO.	STOCK CODE	DESCRIPTION	NO. REQ'D.
1	77008	O	Expansion Plug 13/16	1
2	75043	S	Oil Fill Plug	1
3	2239	O	Chain Case R.H.	1
4	55068	S	Bushing 5/8" Bronze	2
5	2235	O	Chain #35	1
6	2236	O	Sprocket 11 Tooth	1
7	58007	S	Roll Pin 1/4 x 1-1/4	1
8	2237	O	Input Shaft	1
9	2240	S	Gasket, Chain Case	1
10	2238	O	Chain Case, L.H.	1
11	56073	S	Oil Seal	1
12	2234	O	Idler Sprocket	1
13	54100	S	Bearing Race	1
14	54099	S	Needle Bearing	2
15	65092	S	Nut, Keys	17
16	56072	S	Oil Seal	4
17	74038	S	Tapette	1
18	2241	S	Gasket, Check Plug	1
19	54098	S	Needle Bearing	2
20	2232	O	Spacer	1
21	2126	O	Tine Shaft	1
22	2233	O	Chain #50	1
23	70034	S	Screw, Sems	17
24	2265	S	Gasket, Oil Fill	1

SUGGESTED PARTS STOCKING CODE

F - Fast Moving Parts
M - Medium Moving Parts
S - Slow Moving Parts
O - Customer Order Only

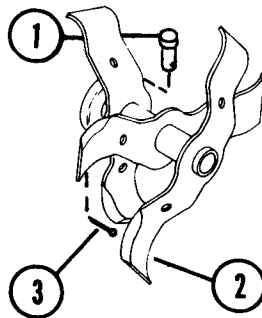
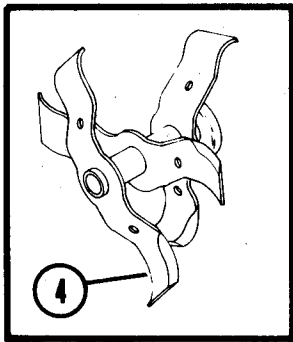
CHAIN DRIVE ATTACHMENTS

702992 TINE EXTENSION KIT (Large Tines)



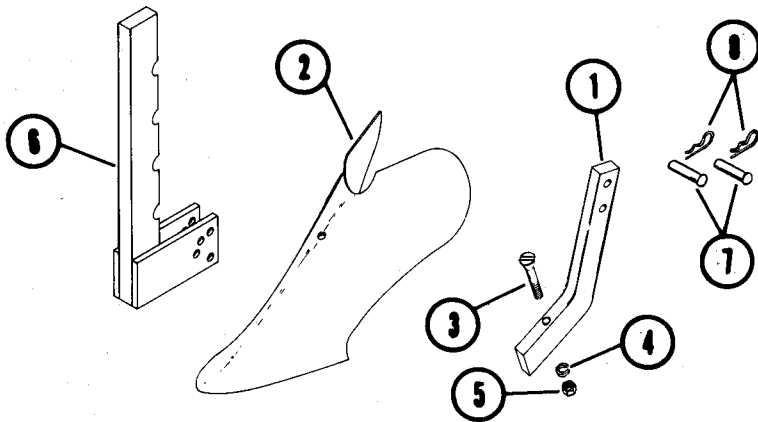
Ref. No.	Part No.	Stock Code	Description
1	2084	S	R.H. Tine
2	2123	M	Clevis Pin
3	67010	M	Hair Pin
4	2012	S	R.H. Outer Tine Spool
5	65019	M	Locknut
6	2085	S	L.H. Tine
7	59026	M	Cap Screw
8	2013	S	L.H. Outer Tine Spool

702005 PICK TINE KIT



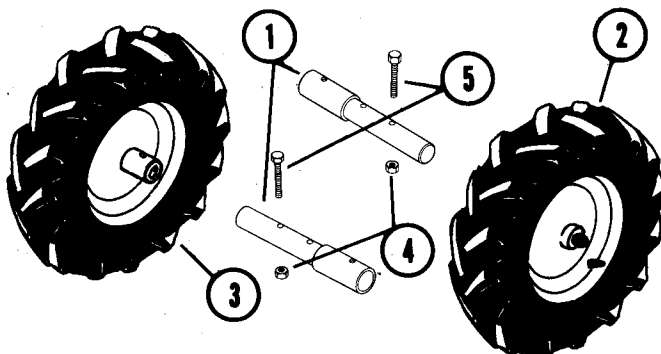
1	2123	M	Clevis Pin
2	2206	S	L.H. Pick Tine Spool
2	2140	S	L.H. Pick Tine Spool
3	67010	M	Hair Pin Internal
4	2205	S	R.H. Pick Tine Spool
4	2141	S	R.H. Pick Tine Spool

702002 FURROWER KIT



1	2263	S	Depth Bar
2	2262	S	Furrower
3	70035	S	Plow Bolt
4	63004	M	Lockwasher
5	65020	M	Nut
6	2254	S	Attachment Fitting
7	2123	M	Clevis Pin
8	67013	M	Hair Pin

702007 WHEEL KIT (For Chain Drive Tiller 902007)



1	2145	S	Wheel Adapter
2	601989	S	L.H. Tire & Wheel Assy
3	601996	S	R.H. Tire & Wheel Assy
Consists of:			
	71036	S	Tire
	71037	S	Tube
	71047	S	Wheel Rim
4	065042	M	Locknut
5	059057	M	Cap Screw

SUGGESTED PARTS STOCKING CODE

- F - Fast Moving Parts
- M - Medium Moving Parts
- S - Slow Moving Parts
- O - Customer Order Only