



Installation for Universal Mower Canopy with ROPS (Rev. 1)

Part Number: 79218000

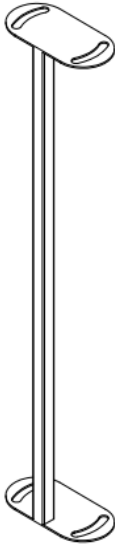
Patent Number: Patent Number US 10,053,158 B1



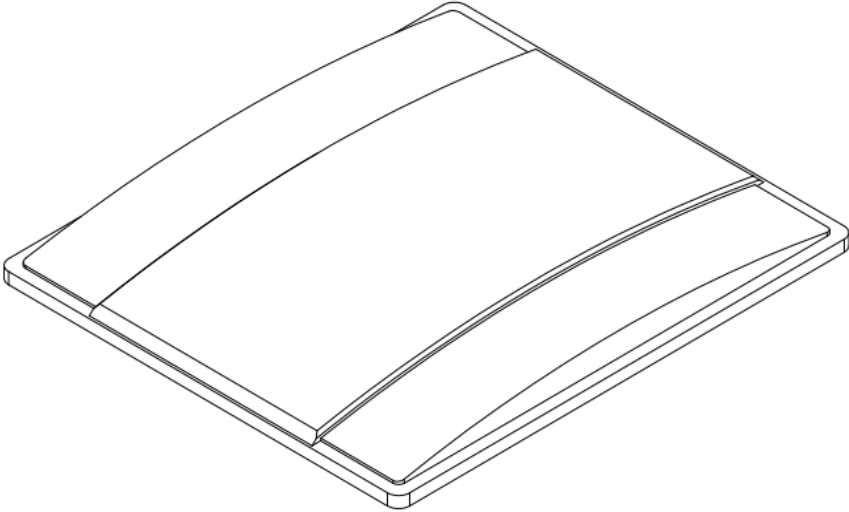
Installation Time: 20 minutes

ALWAYS REMOVE THE CANOPY BEFORE TRANSPORTATION

Hardware Kit for 3641S

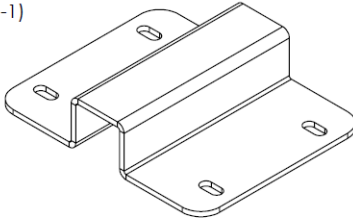


Crossbar (3641CB)

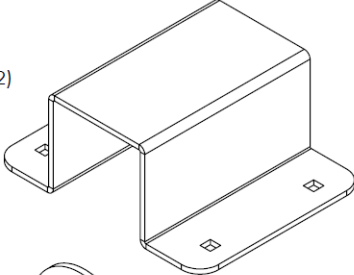


Mower Canopy Top

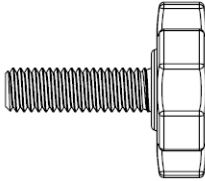
2-1" Top Bar Bracket (3641-1)



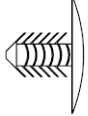
2-2" ROPS Bracket (3641S-2)



4-3/8" Flat Washers



4-Plastic Thumb Screws



2- Black Plugs



8-M6 x 1.5" Carriage Bolts



8-M6 Lock Nuts



4-3/8" Lock Washers

Tools Required for Assembly: 10 mm wrench or socket, hand tighten
do not use power tools

1. Line up the crossbar to be centered on top of the ROPS as shown in the picture below.



2. Use the top bar brackets and the corresponding ROPS bracket to fix the crossbar in place. Make sure the brackets are spaced evenly, then tighten them with the carriage bolts and lock nuts. Be sure to tighten them evenly and not to bend the top brackets.



3. Align the holes in the canopy top with the slots on the crossbar to fit either the forward or aft position.



4. Place the lock washers then the flat washers on the thumb screw before screwing them into the canopy. Then place the plugs in the open holes in the canopy top.



The canopy can be removed from the crossbar and the ROPS can fold down. The crossbar will not get in the way and does not need to be removed.



ALWAYS REMOVE THE CANOPY BEFORE TRANSPORTATION