

Instruction Sheet

Kit Number: 79223400

48" OPERATOR-CONTROLLED DISCHARGE Baffle Kit



WARNING: FAILURE TO FOLLOW INSTRUCTIONS could result in personal injury and/or damage to unit.

Read, understand, and follow all safety practices in Operator's Manual before beginning.

Package Contents

Check the contents of your kit for the parts listed below
Also see Figure 1.

Item	Description	Qty	AriensCo P/N
1	Handle Assembly Wire Handle Soft-Touch Hand Grip	1 1 1	30163300 30165200
2	Discharge Chute Assembly	1	N/A
Non-Assembled Parts			
3	Discharge Chute	1	04880900
4	Discharge Chute Clamp Plate	1	04976151
5	3/8"-16 x 1" Round Head Short Square Neck Bolt	4	06200235
6	3/8"-16 Center Locking Flange Nut	7	06500901
7	3/8"-24 Jam Nut	1	06500739
8	3/8"-24 Rod End	1	09429300
9	3/8" -16 x 1 1/4" Hex Bolt	1	05901724
10	Handle Mounting Bracket	1	30163251
11	3/8"-16 x 1" Round Head Square Neck Bolt	2	06200313
12	1/2"-13 x 6 1/2" Hex Bolt	1	05901907
13	0.511" x 1.44" x 0.125" Flat Steel Washer	1	06401022
14	1/2"-13 Center Locking Flange Nut	1	06500902
15	11/16" x 7/8" x 9/16" Panel Snap Bushing	1	07500126

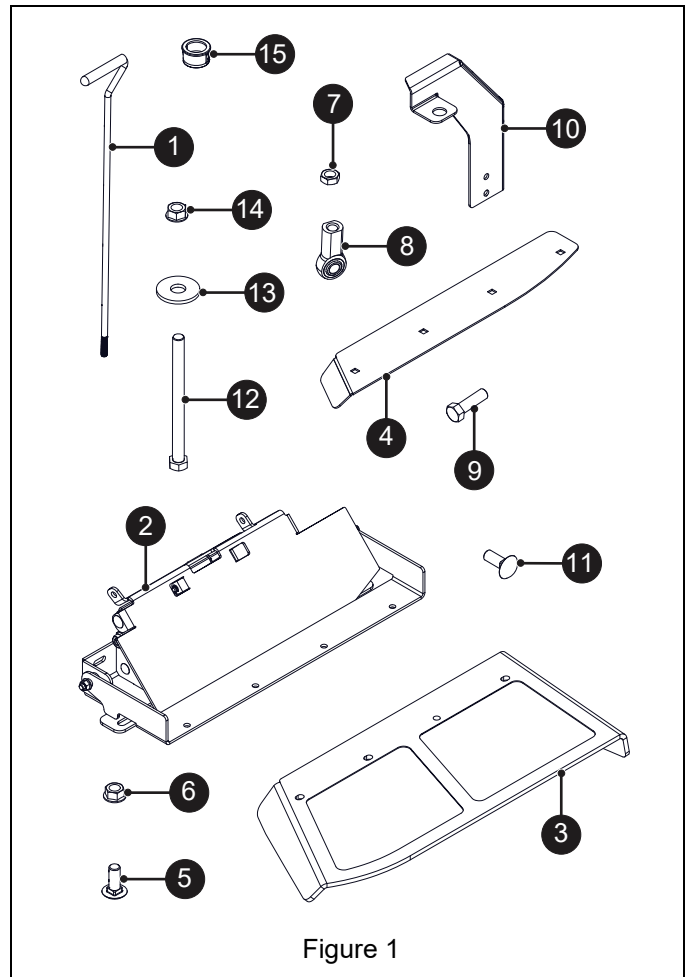
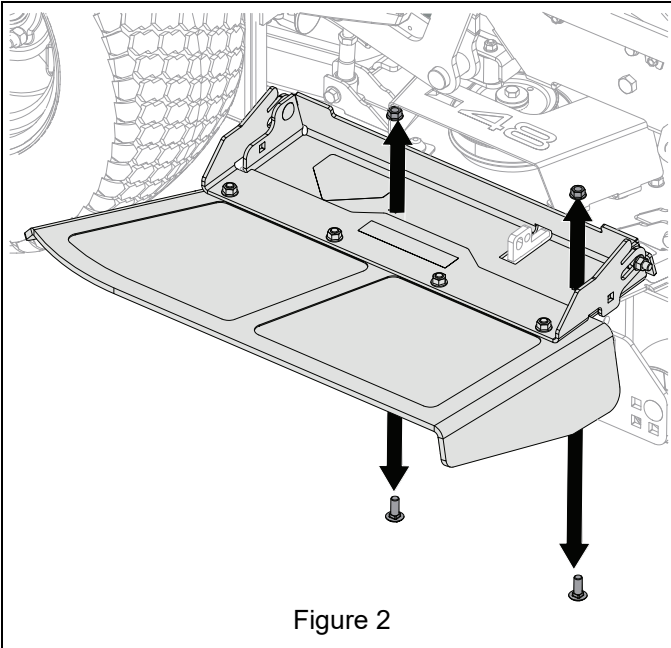


Figure 1

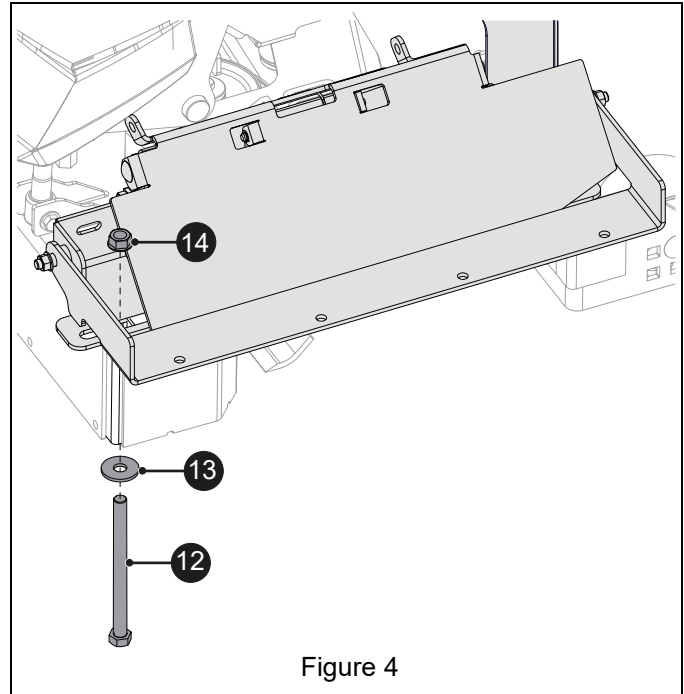
NOTICE: See *Parts List* on page 6 for a full list of parts.

REMOVAL

1. Park unit on a flat, level surface and engage parking brake.
2. Stop engine, remove key and wait for all moving parts to stop and for hot parts to cool.
3. Remove hardware securing discharge chute assembly and remove chute assembly. Retain hardware for installation and discharge chute for use without operator-controlled chute kit. See Figure 2.



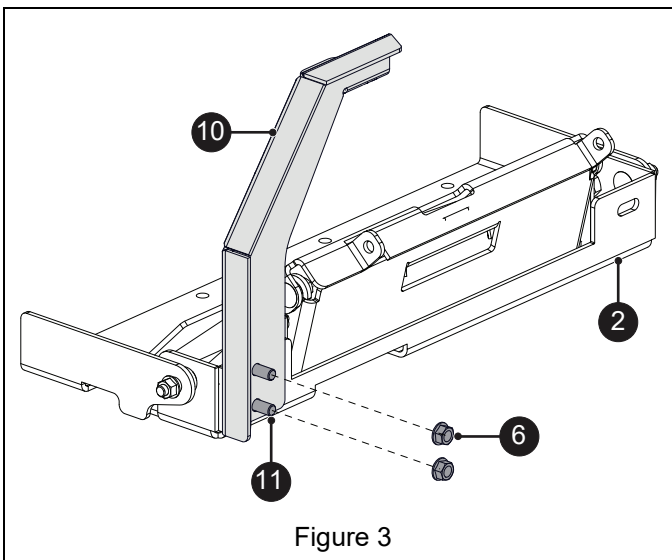
2. Align chute assembly edge with discharge opening.
3. Install discharge chute assembly onto the deck using one 1/2" x 6 1/2" hex bolt (item 12), one 0.511" x 1.44" x 0.125" flat steel washer (item 13), and one 1/2" center locking flange nut (item 14). See Figure 4.



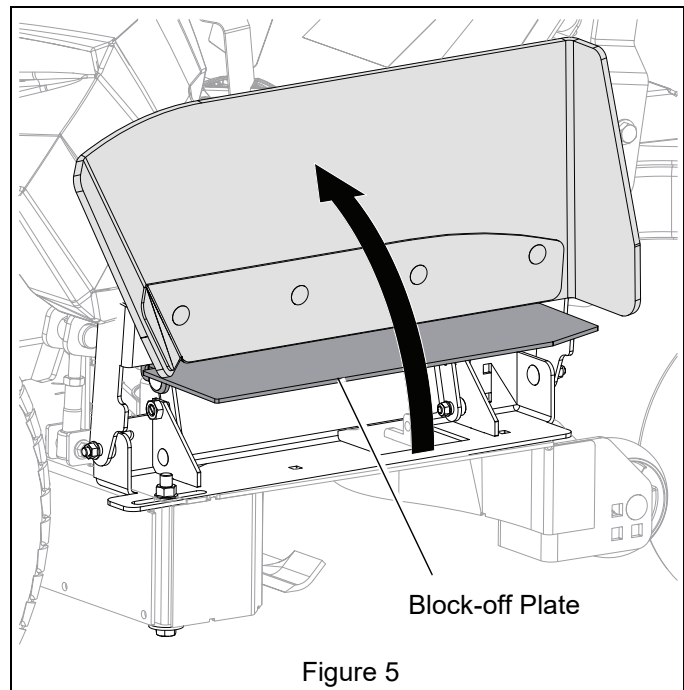
CAUTION: AVOID INJURY. Block-off plate is under spring tension. Use care when rotating block-off plate.

INSTALLATION

1. Install handle mounting bracket (item 10) onto the discharge chute assembly (item 2) using two 3/8" x 1" round head square neck bolts (item 11) and two 3/8" center locking flange nuts (item 6). See Figure 3.



4. Rotate discharge chute and block-off plate upward. See Figure 5.



5. Secure discharge chute to deck using hardware removed earlier. See Figure 6.

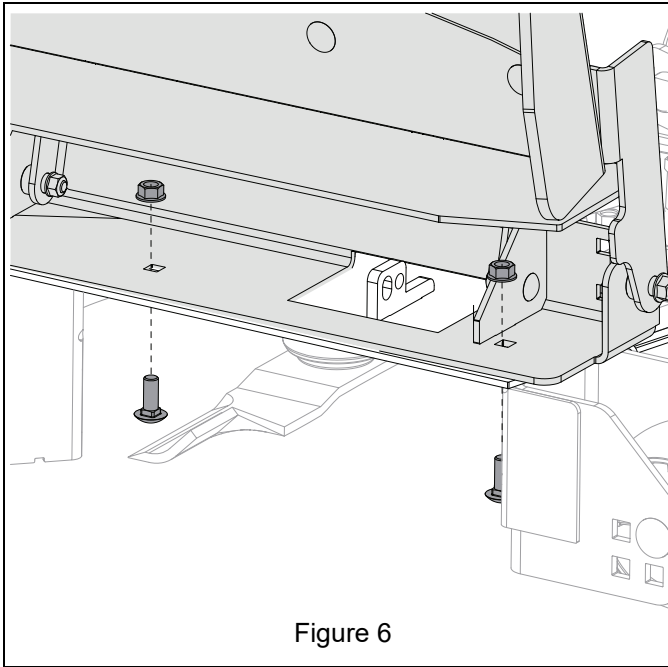


Figure 6

6. Return chute assembly to the operating position.
7. Secure discharge chute (item 3) and chute clamp plate (item 4) to mounting bracket using four 3/8" x 1" round head square short neck bolts (item 5) and four 3/8" center locking flange nuts (item 6). See Figure 7.

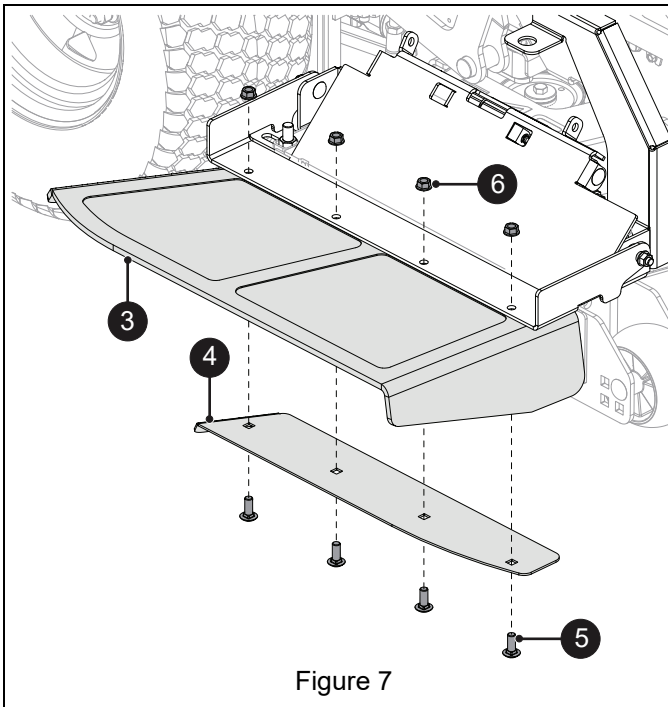


Figure 7

8. Install one 11/16" x 7/8" x 9/16" panel bushing (item 15) into handle mounting bracket. See Figure 8.

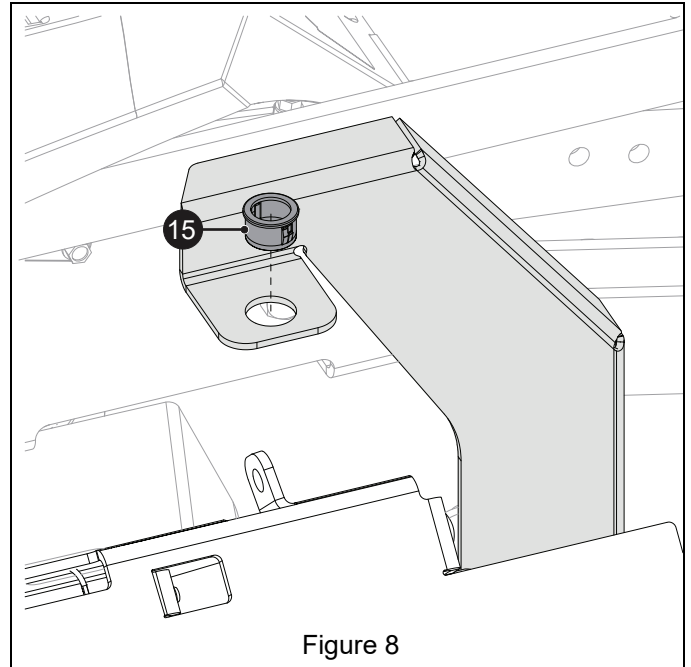


Figure 8

9. Install 3/8" rod end (item 8) to block-off plate using one 3/8" x 1 1/4" hex bolt (item 9) and one 3/8" center locking flange nut (item 6). See Figure 9.

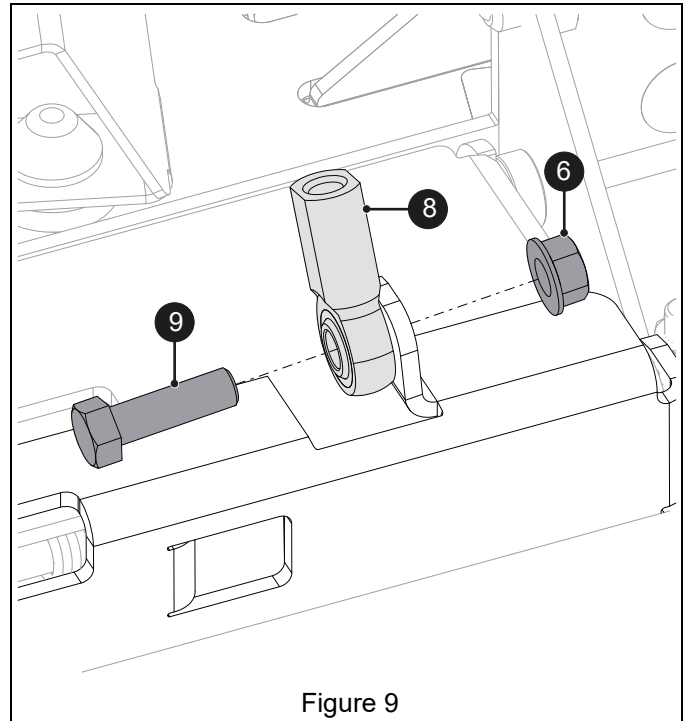


Figure 9

10. Insert handle assembly (item 1) through bracket and bushing. See Figure 10.

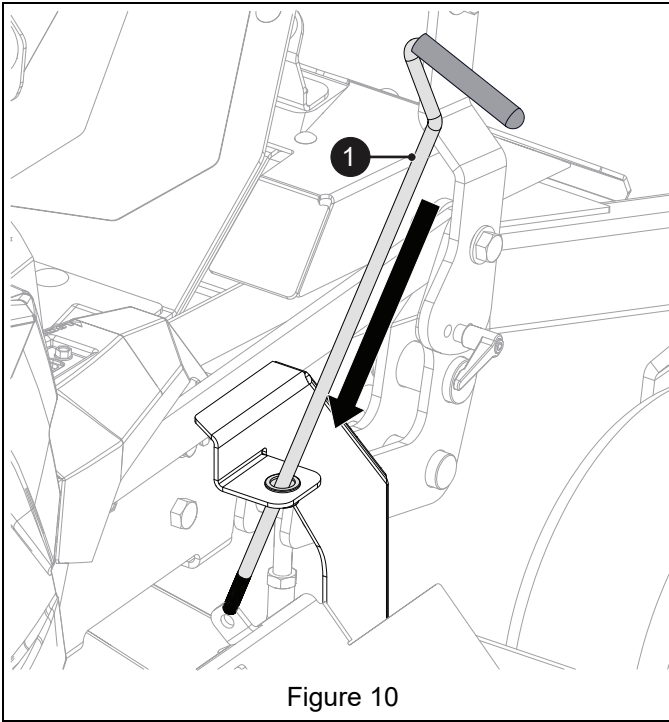


Figure 10

12. Turn jam nut up handle threads and turn handle assembly clockwise into ball joint. See Figure 12.

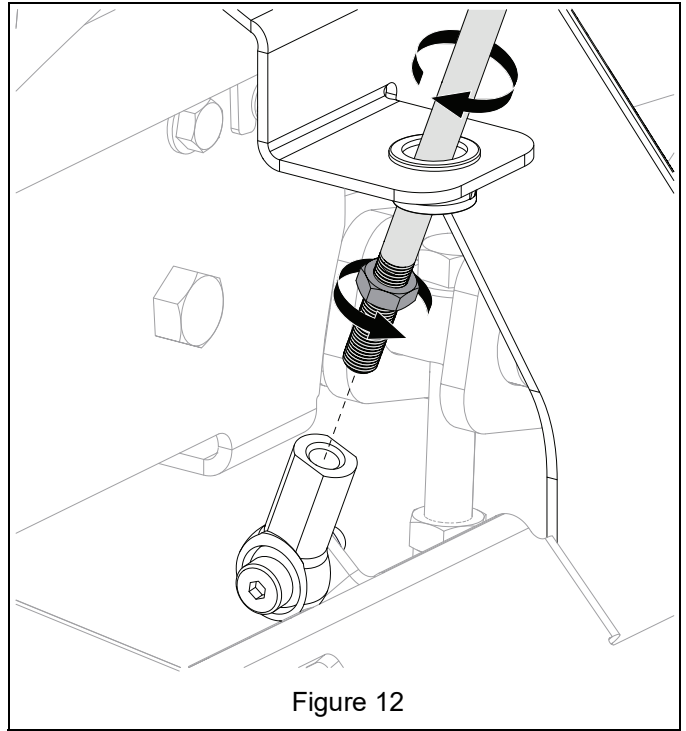


Figure 12

11. Install one 3/8" jam nut (item 7) onto handle assembly threads. See Figure 11.

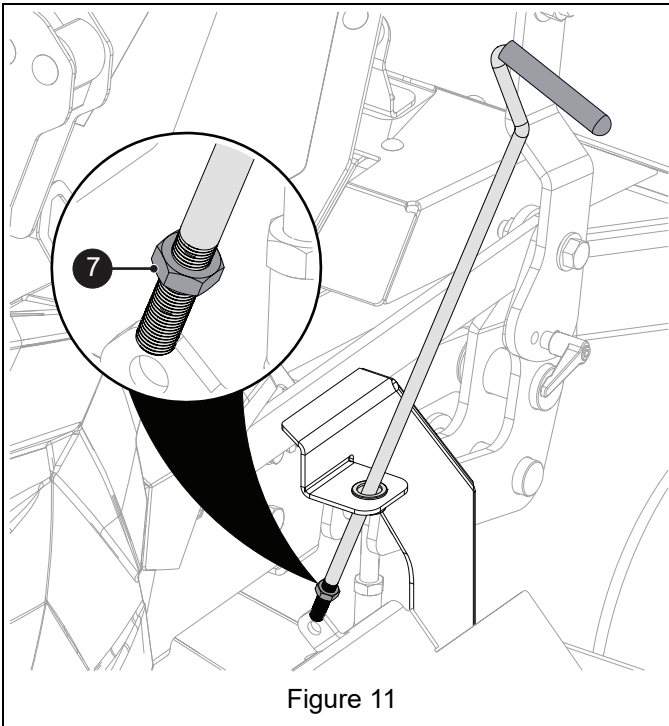


Figure 11

13. Sit on unit and rotate handle to preferred position. See Figure 13.

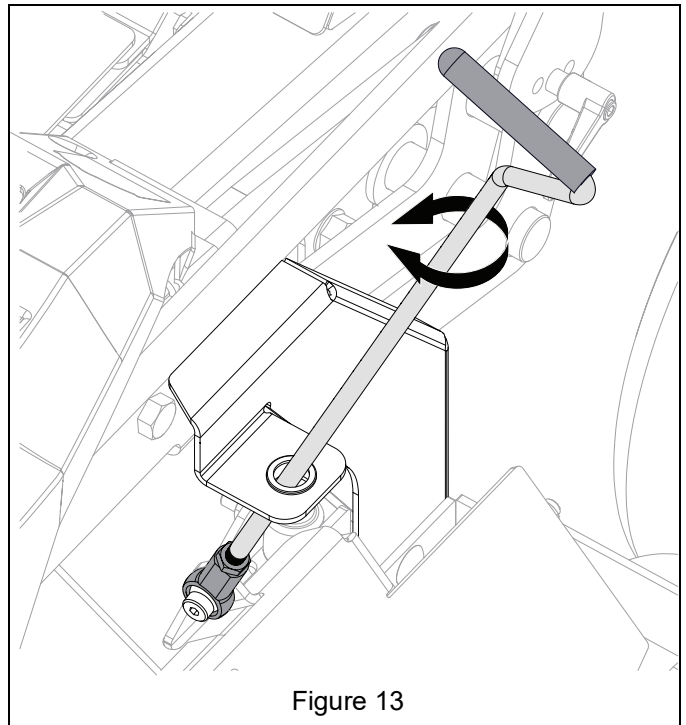
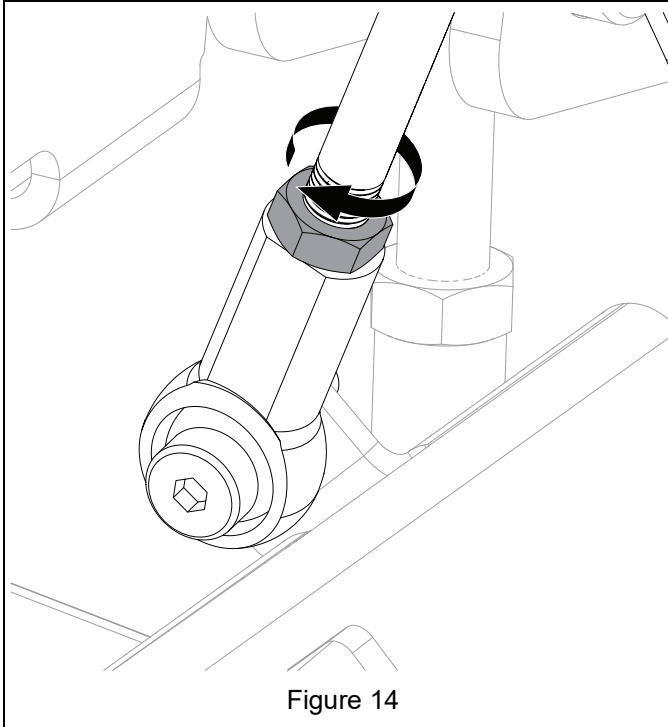


Figure 13

14. Tighten jam nut against ball joint. See Figure 14.

IMPORTANT: Ensure that there are sufficient threads in ball joint.



15. Test chute function.

OPERATION

1. Pull handle up to open discharge opening; push handle down to block discharge opening.

PARTS LIST

See Figure 15.

Item	Description	Qty	AriensCo P/N
1	Discharge Chute Base	1	09396000
2	Block-off Hinge	1	09396151
3	Block-off Plate	1	30163451
4	Chute Mounting Bracket	1	09396351
5	Discharge Chute	1	04880900
6	Discharge Chute Clamp Plate	1	04976151
7	3/8" x 1/2" x 7/8" x 13/32" Flange Bushing	2	05500435
8	25/64" x 1/2" x 25/32" x 7/8" Flange Spacer	2	03114500
9	3/16" x 11 1/4" Pin	1	06800123
10	Torsion Spring	1	08300515
11	11/16" x 7/8" x 9/16" Panel Snap Bushing	1	07500126
12	3/8"-24 Rod End	1	09429300
13	1/2"-13 Spring Plunger Ball	2	07001704
14	Wire Handle	1	30163300
15	Handle Mounting Bracket	1	30163251
16	5/16" x 1/2" x 11/16" x 9/32" Bearing Spacer	2	01213100
17	0.31 x 0.025 External Retaining Ring	2	05718300
18	3/8"-16 x 1 1/2" Round Head Short Square Neck Bolt	2	06200328
19	3/8"-16 x 1" Round Head Short Square Neck Bolt	6	06200235
20	3/8"-16 x 1" Round Head Square Neck Bolt	2	06200313
21	5/16"-18 x 1 1/4" Round Head Short Square Neck Bolt	2	06200310
22	3/8"-16 Center Locking Flange Nut	11	06500901
23	5/16"-18 Center Locking Flange Nut	2	06500840
24	3/8"-24 Jam Nut	1	06500739
25	1/2"-13 Center Locking Flange Nut	1	06500902
26	1/2"-13 x 6 1/2" Hex Bolt	1	05901907
27	0.511" x 1.44" x 0.125" Flat Steel Washer	1	06401022
28	3/8" -16 x 1 1/4" Hex Bolt	1	05901724
29	Soft-Touch Hand Grip	1	30165200
30	1/2"-13 Jam Nut	2	06500911

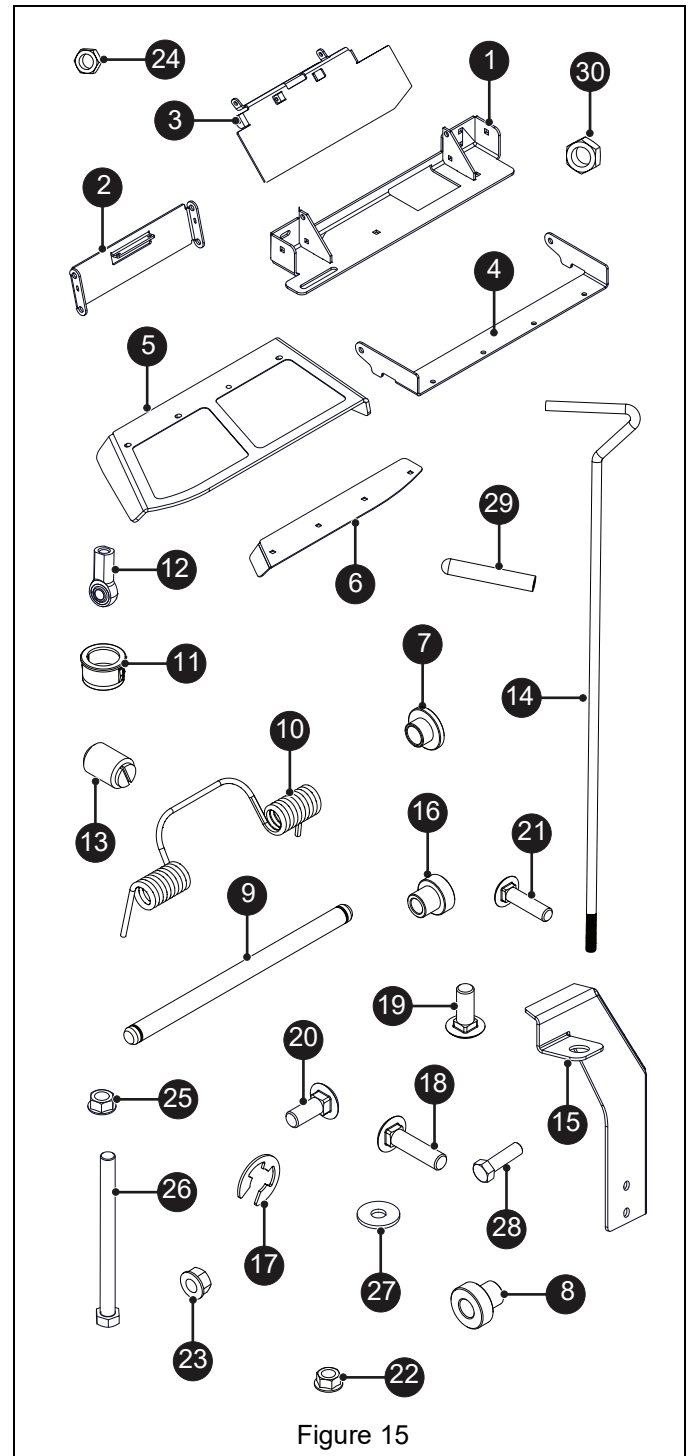


Figure 15