

Instruction Sheet

Kit Number: 79221100

ELECTRIC DECK LIFT KIT



WARNING: FAILURE TO FOLLOW INSTRUCTIONS could result in personal injury and/or damage to unit.
Read, understand, and follow all safety practices in Operator's Manual before beginning.

Package Contents

Check the contents of your kit for the parts listed below
Also see Figure 1.

| Item | Description | Qty | AriensCo P/N |
|------|---|-----|--------------|
| 1 | 1/4-20 x 1/2" Hex Washer Head Tapping Screw | 2 | 07400122 |
| 2 | Electric Lift Linear Actuator | 1 | 04411500 |
| 3 | 1/2"-13 x 2 1/4" Hex Bolt | 2 | 05901835 |
| 4 | 3/8"-16 Center Lock Flange Nut | 1 | 06500901 |
| 5 | 1/2"-13 Center Lock Flange Nut | 2 | 06500902 |
| 6 | 1/2"-13 x 1 1/4" Hex Bolt | 1 | 05901637 |
| 7 | 3/8"-16 x 1" Hex Bolt | 1 | 05901711 |
| 8 | 5/16"-18 x 1" Hex Bolt | 1 | 05901701 |
| 9 | Electric Deck Lift Harness | 1 | 09672000 |
| 10 | EC23 Mount With Cable Tie | 2 | 07500509 |
| 11 | J-Clamp | 1 | 06916000 |
| 12 | 5/8" Cushioned Steel Clamp | 1 | 06908200 |
| 13 | 3/4" x 1 1/8" x 1/16" Flat Washer | 1 | 06401119 |
| 14 | Deck Lift Switch | 1 | 09362200 |
| 15 | Deck Lift Switch Bracket | 1 | 09679053 |
| 16 | Front Actuator Mount Bracket | 1 | 09678551 |
| 17 | Rear Actuator Mount Bracket | 1 | 09678651 |
| 18 | 15-Amp Mini-ATC Fuse | 1 | 04438200 |
| 19 | 15 1/4" Cable Tie | 1 | 04003500 |
| 20 | 8 1/2" Cable Tie | 4 | 00111910 |

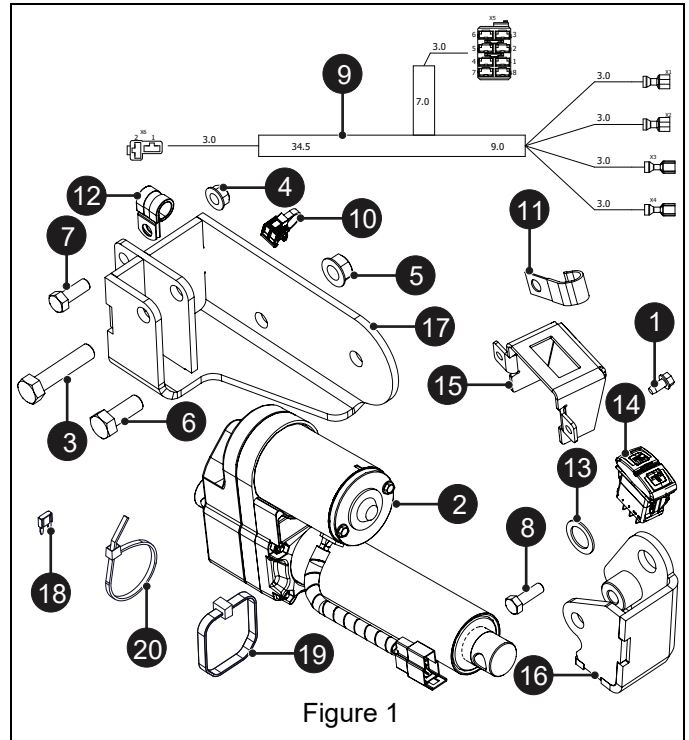


Figure 1

REMOVAL

1. Park unit on a flat, level surface and engage parking brake.
2. Stop engine, remove key and wait for moving parts to stop and for hot parts to cool.
3. Disconnect negative battery cable from battery and isolate cable so it does not contact battery.
4. Choose a height of cut (HOC) and rotate HOC adjustment wheel to that setting. Place deck in chosen HOC position. DO NOT place deck in transport lock position.

Rotate Seat Assembly Forward

1. Remove and retain two 5/16" x 1" hex bolts and two flat washers retaining seat plate assembly at back of operator's seat. See Figure 2.

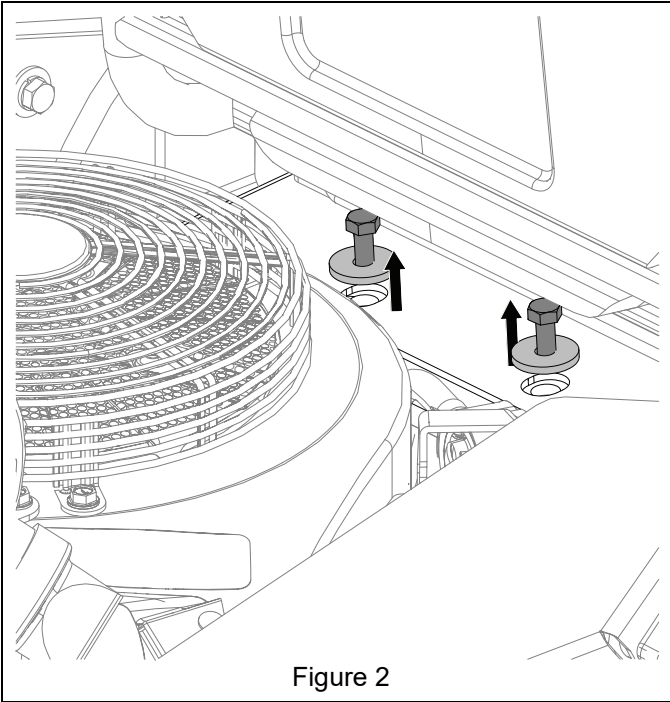


Figure 2

2. Rotate seat assembly forward until it rests against stop bolts. See Figure 3.

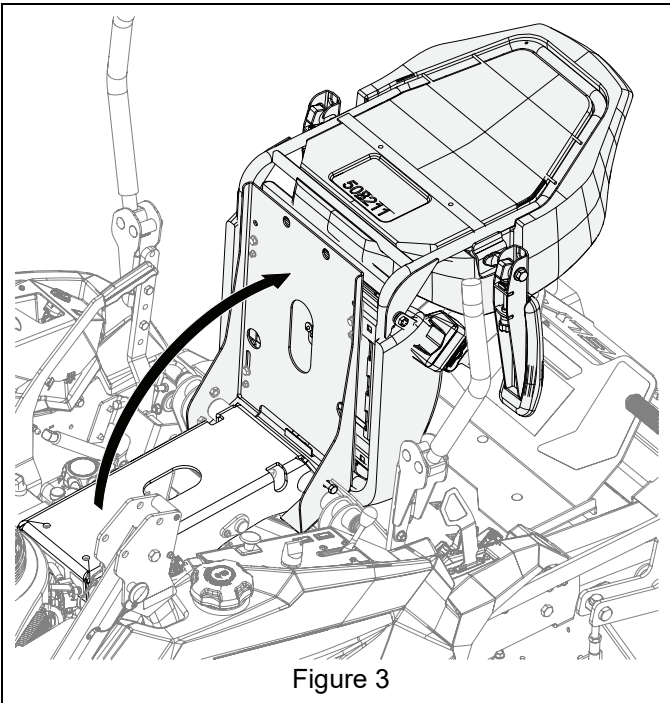


Figure 3

Remove Pedal Assembly

1. Remove pedal adjustment clamping lever from deck lift pedal assembly and discard. Remove and retain 1/2" x 2 1/4" hex bolt, flat washer and flange nut from deck lift pedal assembly. Remove and discard pedal assembly. See Figure 4.

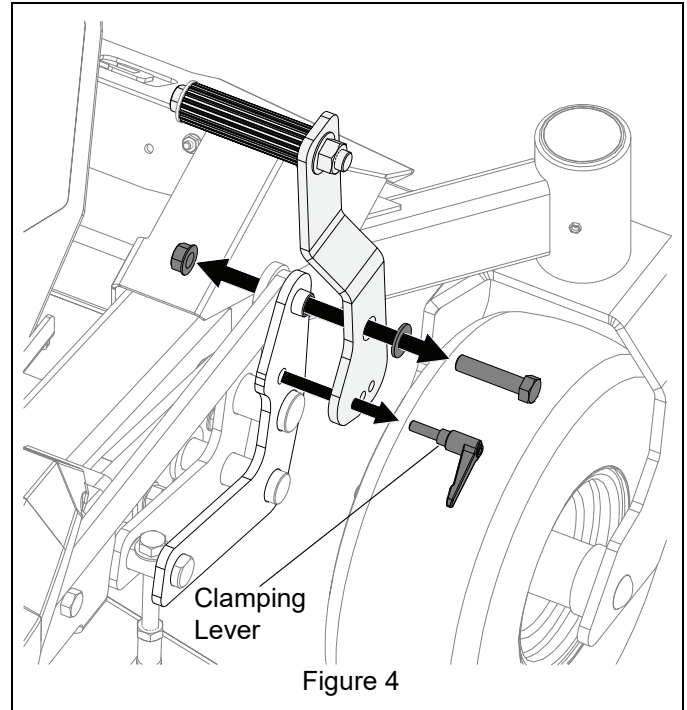
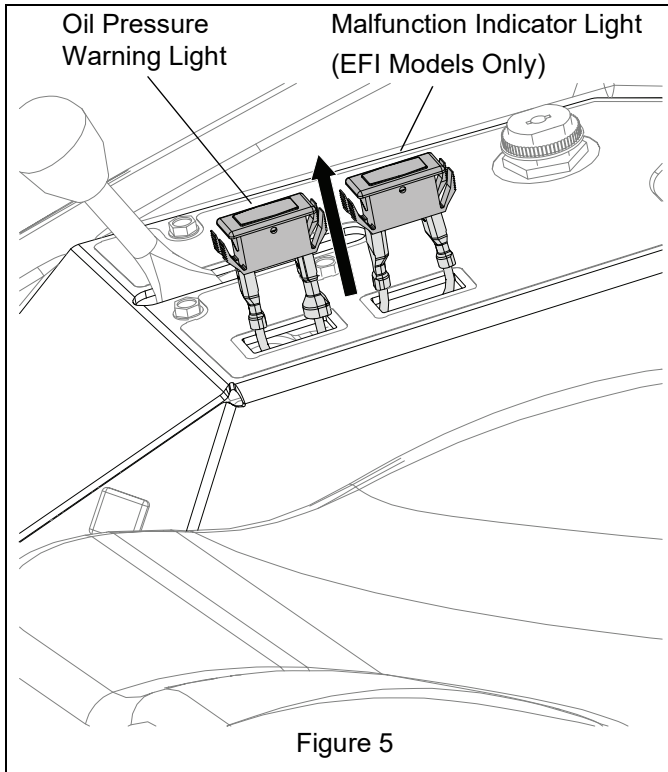


Figure 4

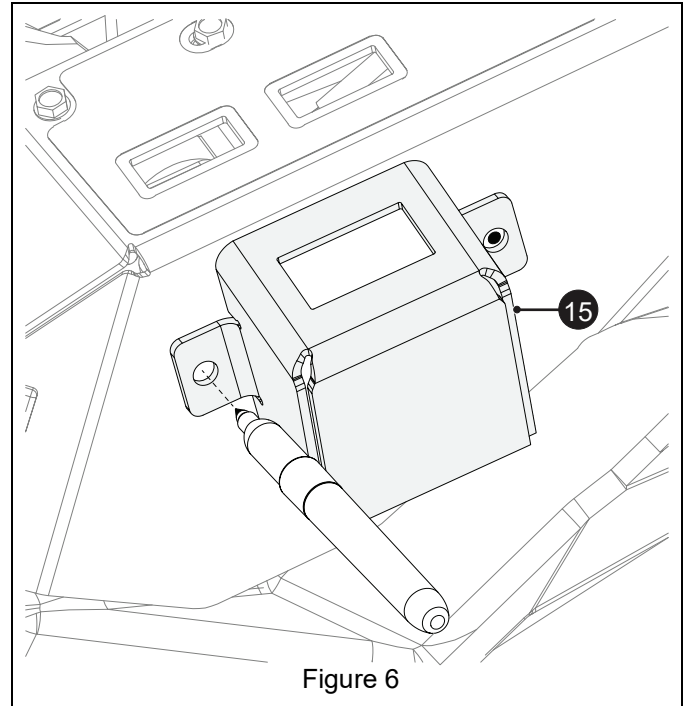
INSTALLATION

Install Switch

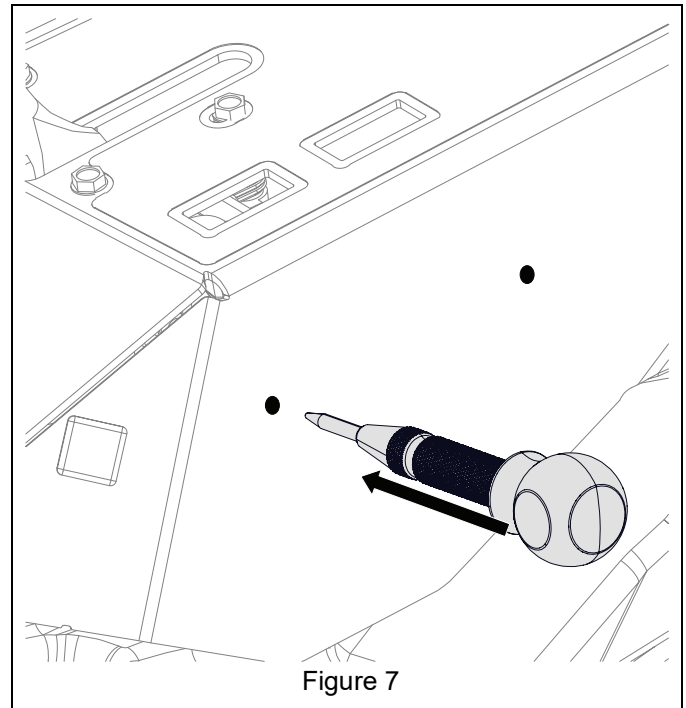
1. Remove oil pressure warning light from right control panel. On units with EFI remove malfunction indicator light. Note wire connection points and colors and disconnect indicator light(s). See Figure 5.



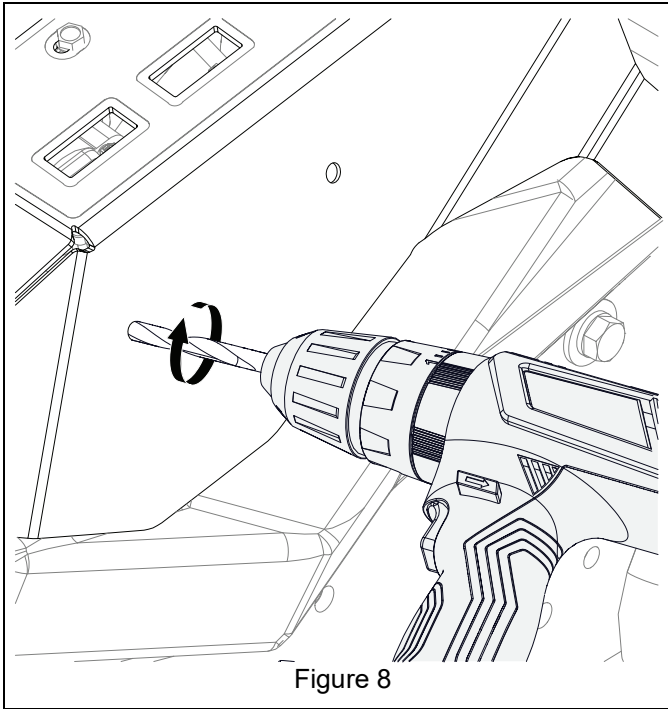
2. Temporarily position deck lift switch bracket (item 15) against side of control panel with top edge level with face of control panel and centered between two indicator light holes. Ensure bracket is properly aligned and mark two drill locations. See Figure 6.



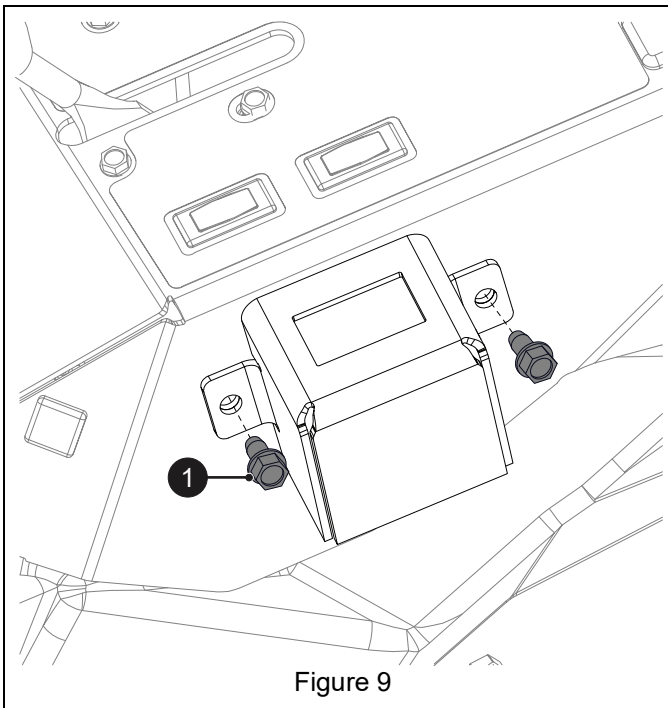
3. Use a center punch to make indents at the drill marks. See Figure 7.



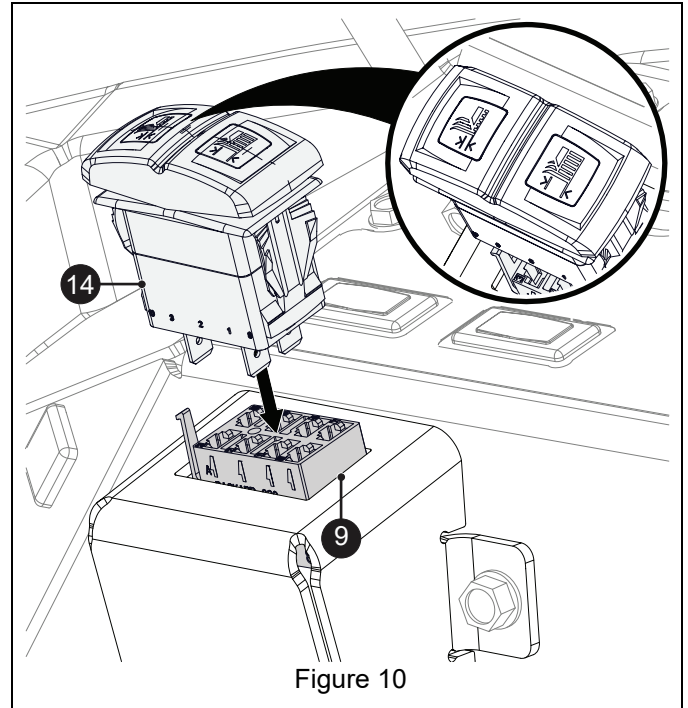
4. Ensure that wires are positioned away from the site and drill two 3/16" (0.188") holes at the center punched indents. DO NOT allow bit to penetrate too deep. See Figure 8.



5. Reinstall indicator light(s). Ensure that wires are attached in the same locations as when removed.
6. Attach switch bracket to control panel with two 1/4" x 1/2" hex washer head tapping screws (item 1). See Figure 9.



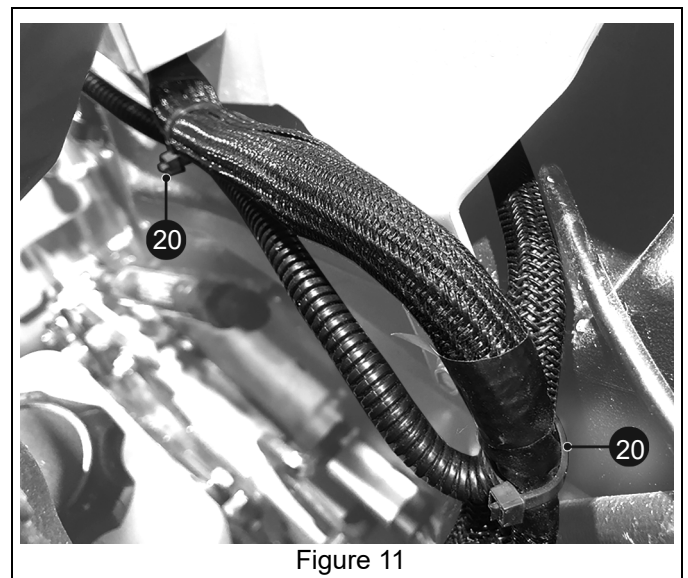
7. Route switch connector on wire harness (item 9) up through hole in deck lift bracket. Securely connect harness plug to back of switch (item 14). Position switch with short grass image facing forward and securely snap switch into bracket. See Figure 10.



Install Harness

See Figure 11.

1. Route deck actuator harness and power harnesses from switch to rear of unit compartment. Route actuator harness 180 degrees and to front of unit between fuel tank bracket and right side steering lever bracket.
2. Route harness with four wires to engine compartment.
3. Secure both harnesses with two 8 1/2" cable ties (item 20)



4. Remove and retain 5/16" x 3/4" hex bolt, flat washer and lock washer from lower fuel tank. See Figure 12.

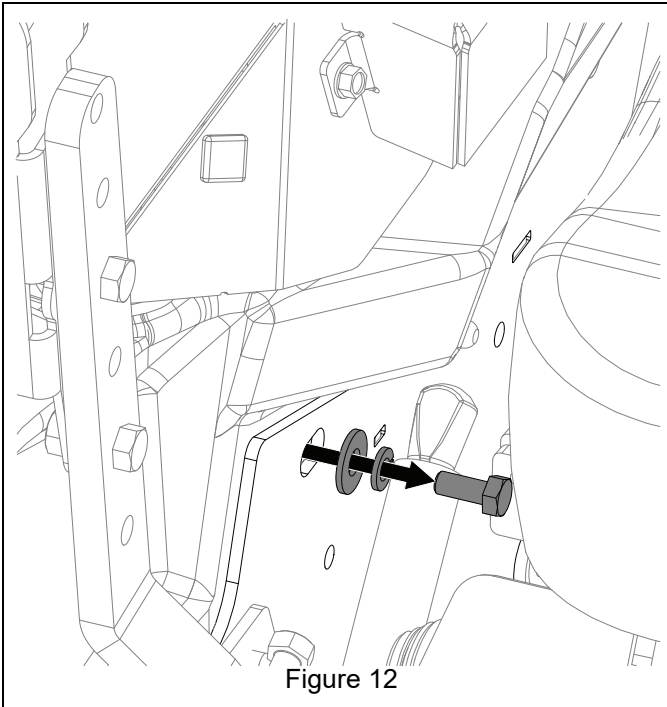


Figure 12

5. Position one J-clamp (item 11) against frame and retain with hardware just removed. Position actuator harness in clamp. See Figure 13.

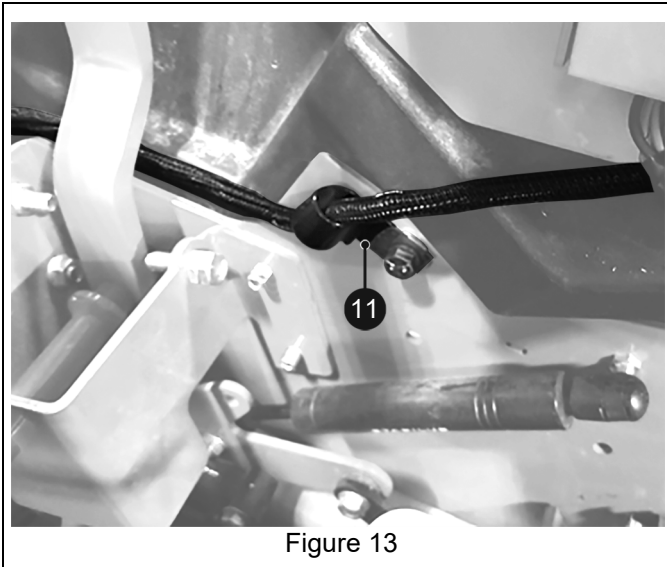


Figure 13

6. Install one EC23 clip (item 10) on top outside edge of right steering lever bracket. Secure harness with clip cable tie. See Figure 14.

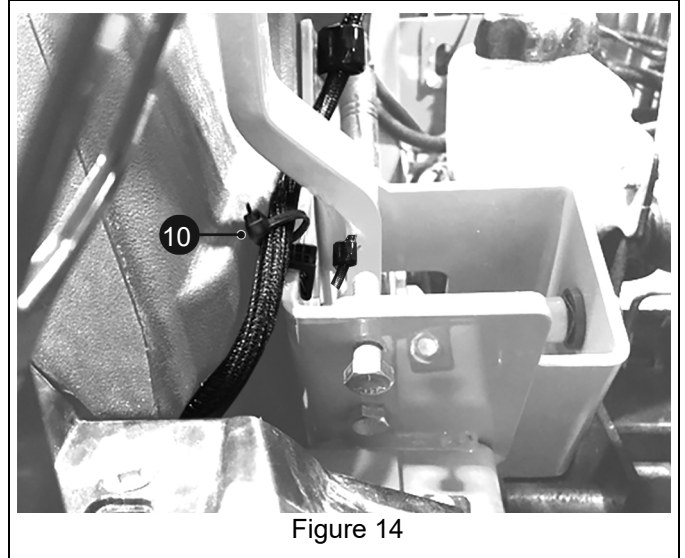


Figure 14

7. Route actuator harness under rear of height-of-cut adjustment dial cover. Install second EC23 clip (item 10) on bottom rear edge of cover. Secure harness with clip cable tie. Ensure that harness has sufficient distance from deck lift linkage. See Figure 15.

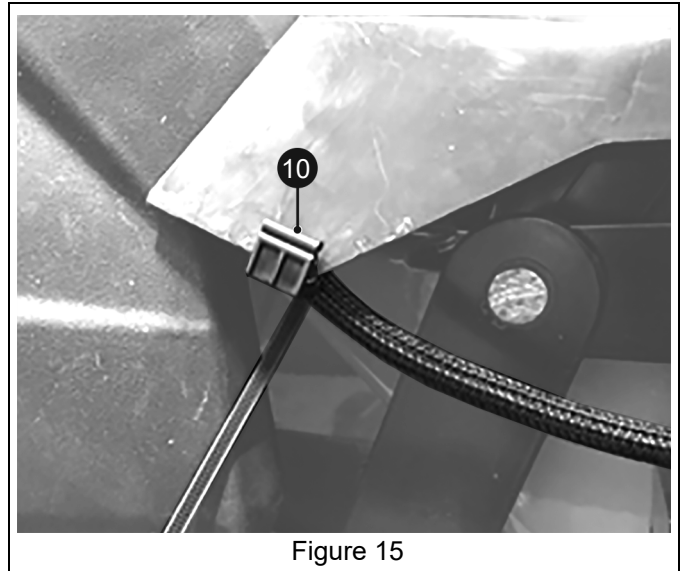


Figure 15

See Figure 16.

8. In engine compartment, locate violet and black accessory leads branching from the main wire harness behind the operator's seat.
9. Route electric lift harness to accessory leads and connect two wires.
 - Connect violet male connector to violet female accessory connector.
 - Connect black male connector to black female accessory connector.

NOTICE: Two wires with female connectors are not used at this time. These violet and black wires are reserved to connect additional accessories, such as a light kit.

10. Secure electric harness harness to main harness with two 8 1/2" cable ties (item 20).

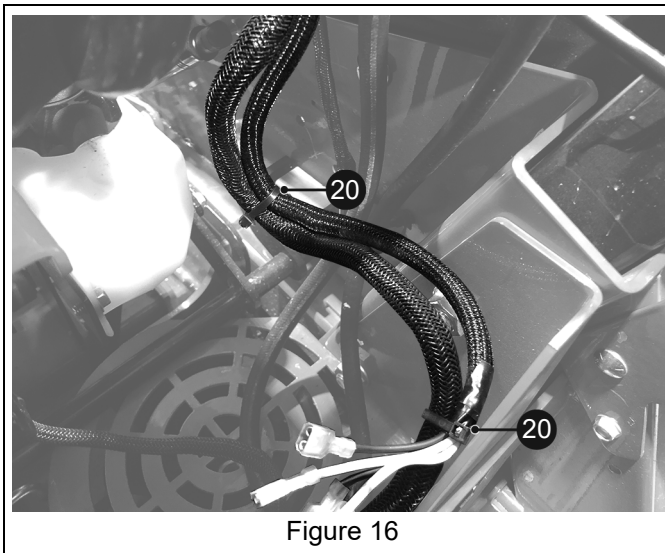


Figure 16

Replace Fuse

1. Locate fuse box on the left side of the mower behind operator's seat and remove cover.

See Figure 17.

2. Remove and discard 7.5-amp fuse closest to relays.
3. Install 15-amp fuse (item 18) in socket where fuse was just removed.
4. Replace fuse box cover.

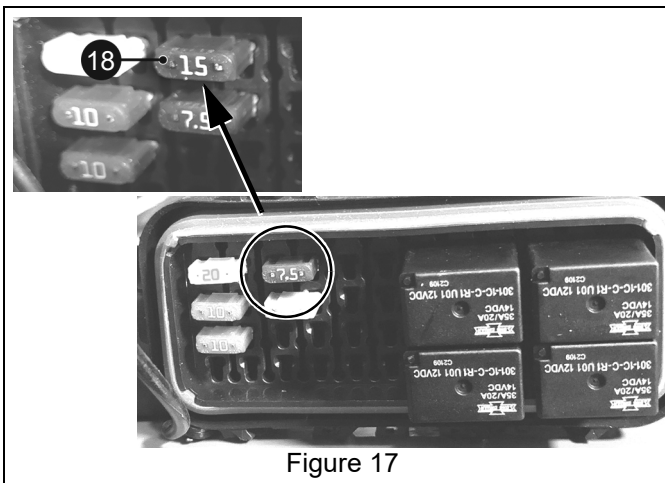


Figure 17

Install Actuator

See Figure 18.

1. Position front actuator mount bracket (item 16) on spacer sleeve.
2. Position 3/4" x 1 1/8" flat washer (item 13) on spacer sleeve.
3. Retain bracket and flat washer with 1/2" hex bolt, flat washer and flange nut removed earlier. Do not fully tighten.
4. Install 5/16" x 1" hex bolt (item 8) in lower hole in bracket. Torque to 20.3 N•m – 24.4 N•m (15 lb-ft – 18 lb-ft).
5. Torque upper hardware to 74.6 N•m – 81.4 N•m (55 lb-ft – 60 lb-ft).

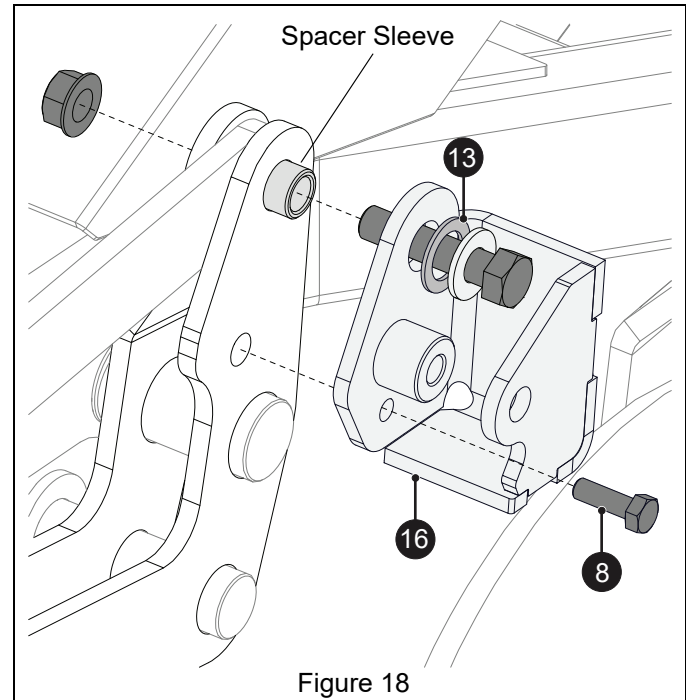
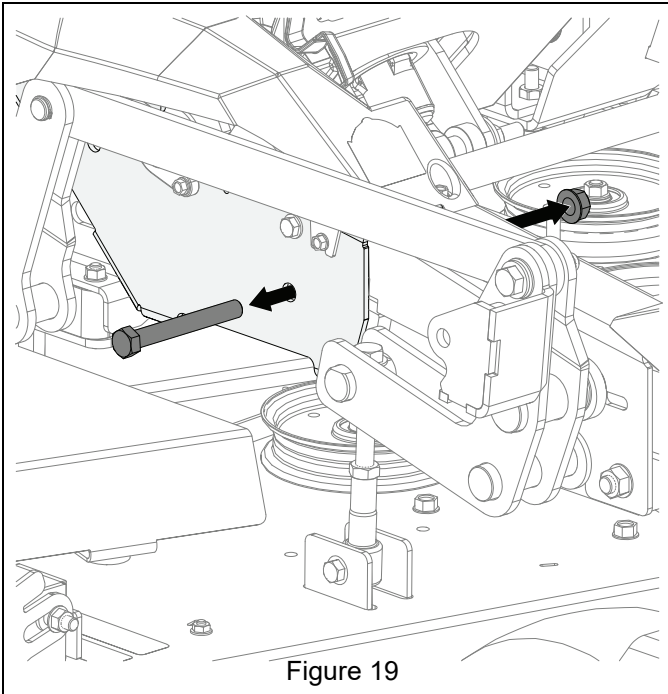
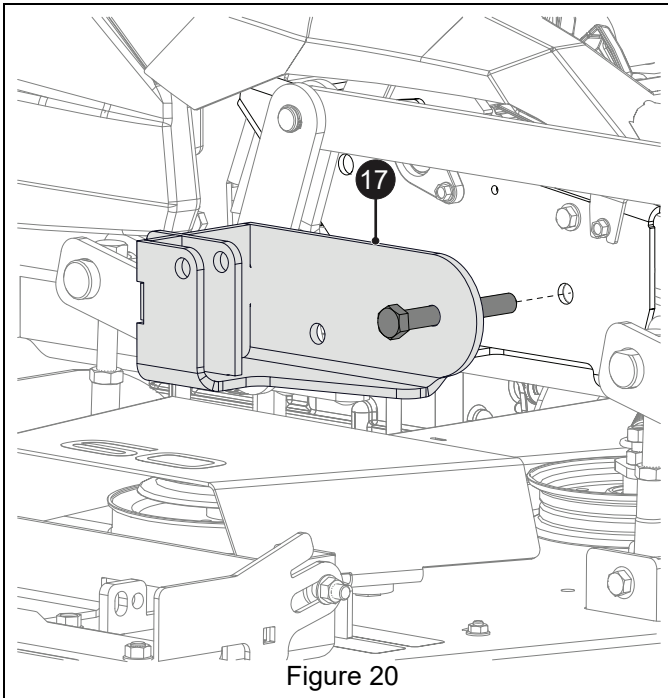


Figure 18

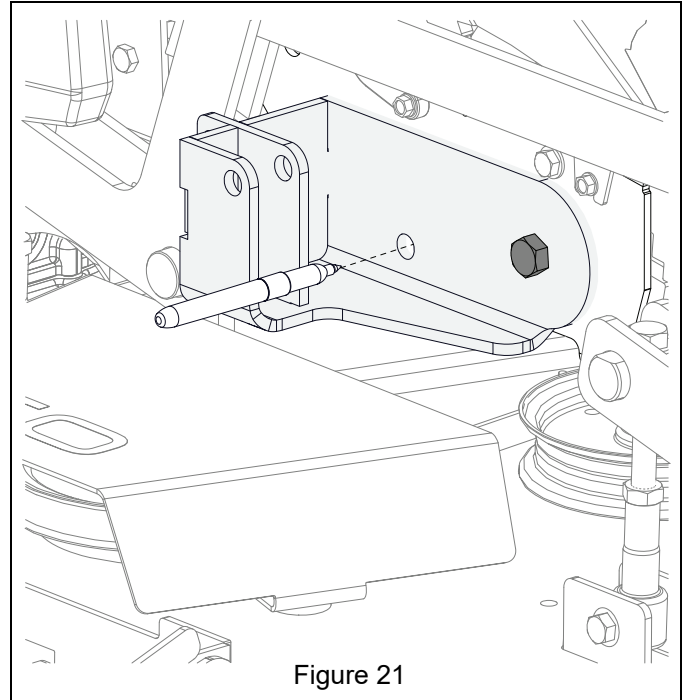
6. Remove and retain 1/2" x 4" hex bolt and flange nut from transport lock pivot. See Figure 19.



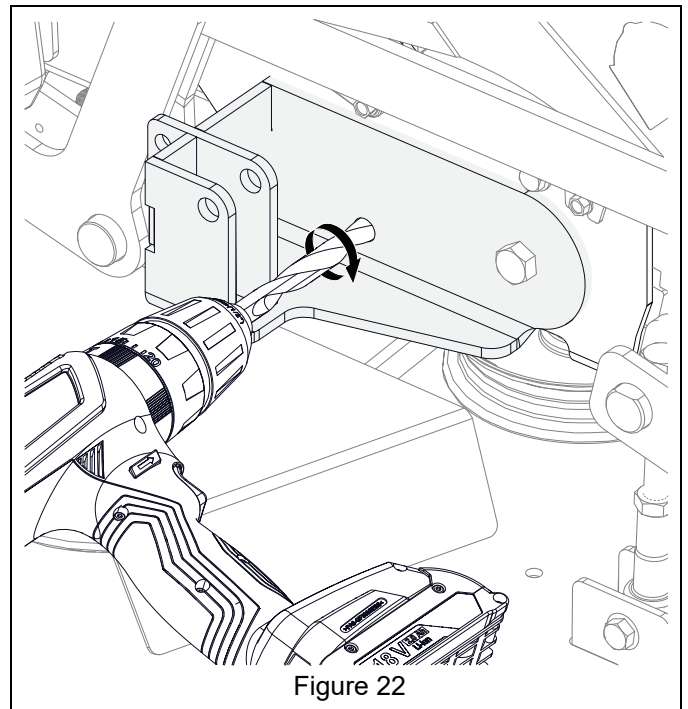
7. Insert hex bolt just removed in front hole of rear actuator mount bracket (item 17) and position bracket on frame. Ensure hex bolt is routed through transport lock pivot pawl. See Figure 20.



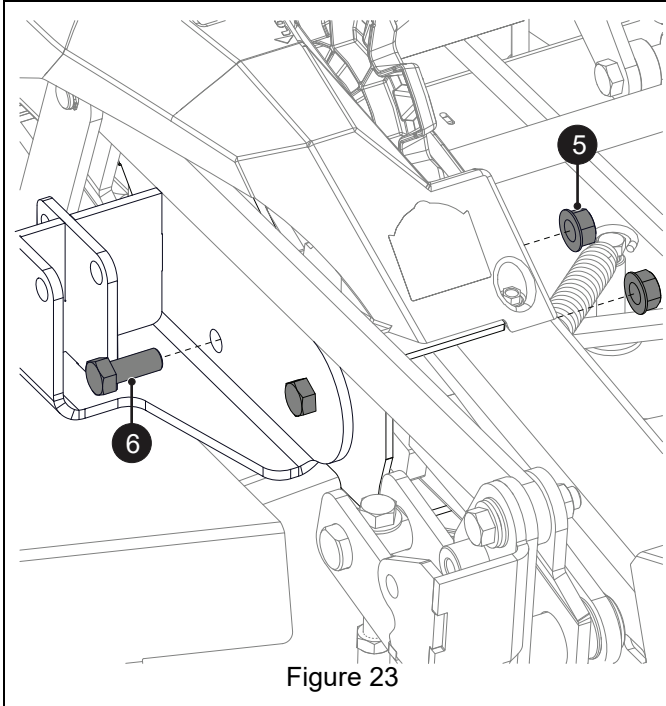
8. Position bracket so that bracket bottom edge is parallel with lower frame edge and mark position of rear hole. See Figure 21.



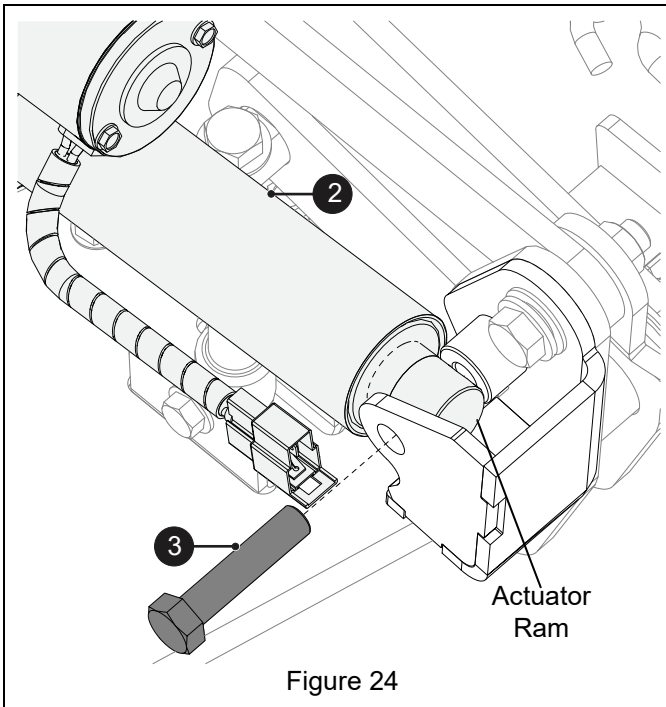
9. Ensure that bracket remains at marked location and drill a 1/2" (0.50") hole through frame. See Figure 22.



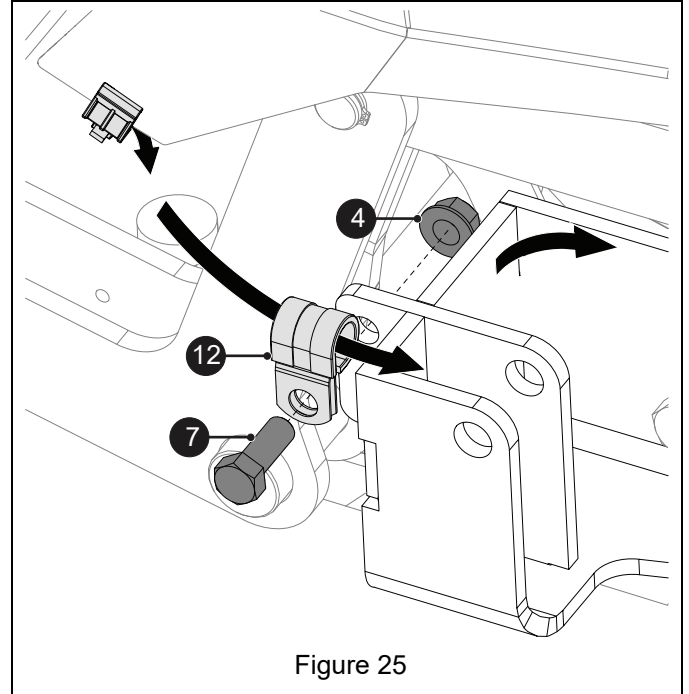
10. Secure rear mount to frame with one 1/2" x 1 1/4" hex bolt (item 6) and one 1/2" center lock flange nut (item 5). Replace front flange nut removed earlier. Torque front and rear hardware to 74.6 N•m – 81.4 N•m (55 lb-ft – 60 lb-ft). See Figure 23.



11. Position lift actuator (item 2) in front mount bracket with actuator motor facing up and ram facing forward. Secure ram to front mount with one 1/2" x 2 1/4" hex bolt (item 3). Torque bolt to 20.3 N•m – 27.1 N•m (15 lb-ft – 20 lb-ft). See Figure 24.

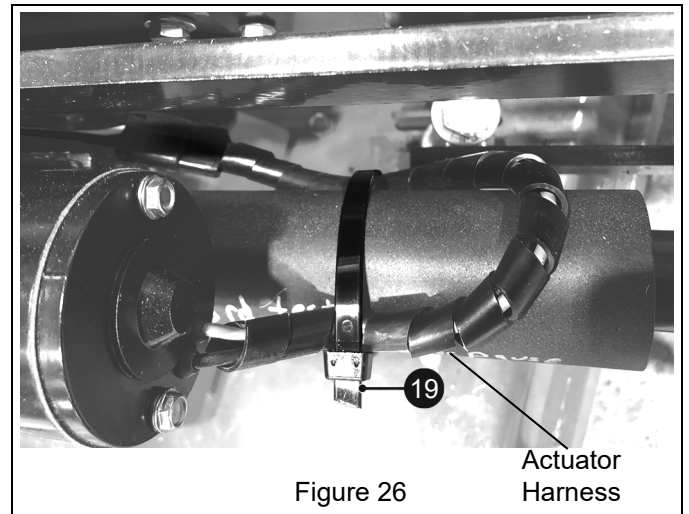


12. Route harness through cushioned steel clamp (item 12) and forward between actuator and frame. Retain clamp with one 3/8" x 1" hex bolt (item 7) and one 3/8" center lock flange nut (item 4). See Figure 25.



See Figure 26

13. Connect main harness to actuator harness. Ensure that clip locks securely.
14. Route connected harnesses between actuator and frame and secure to actuator with one 15 1/4" cable tie (item 19).



NOTICE: If actuator position is too short to connect to rear mount, reconnect negative battery cable, turn key to run position and adjust actuator length by operating switch to align mounting holes. See *Complete Installation* below.

- Secure rear of actuator (item 2) to rear mount with one 1/2" x 2 1/4" hex bolt (item 3) and one 1/2" center lock flange nut (item 5). Torque to 20.3 N•m – 27.1 N•m (15 lb-ft – 20 lb-ft). See Figure 27.

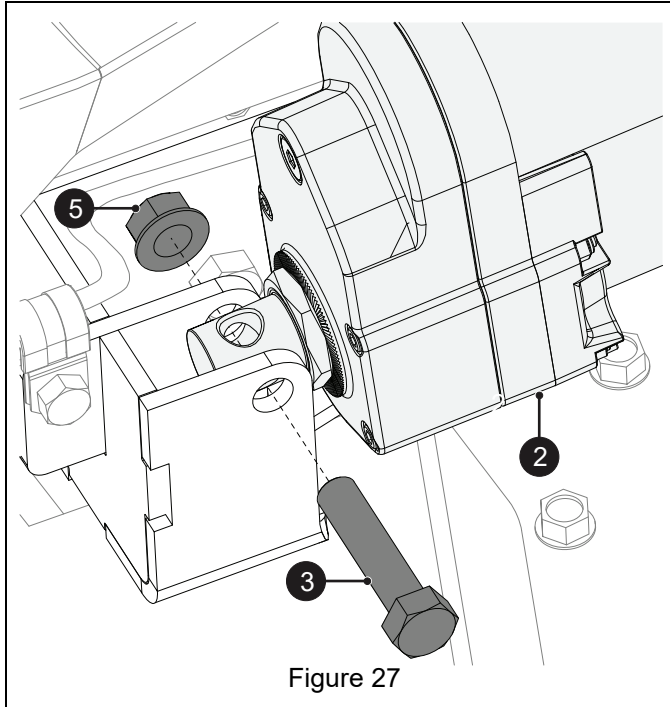


Figure 27

Complete Installation

- Reconnect battery negative cable.
- Insert key and place in run position.
- Verify that deck lowers when front of switch is pressed and that deck raises when back of switch is pressed. See Figure 28.

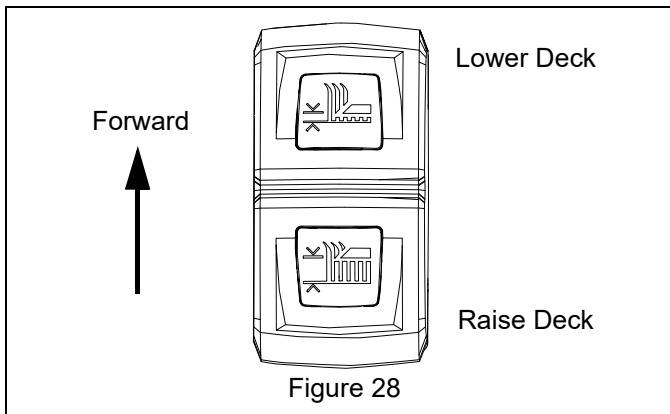


Figure 28

- Return key to off position.
- Return seat assembly to operating position and reinstall two flat washers and two hex bolts. See Figure 29.

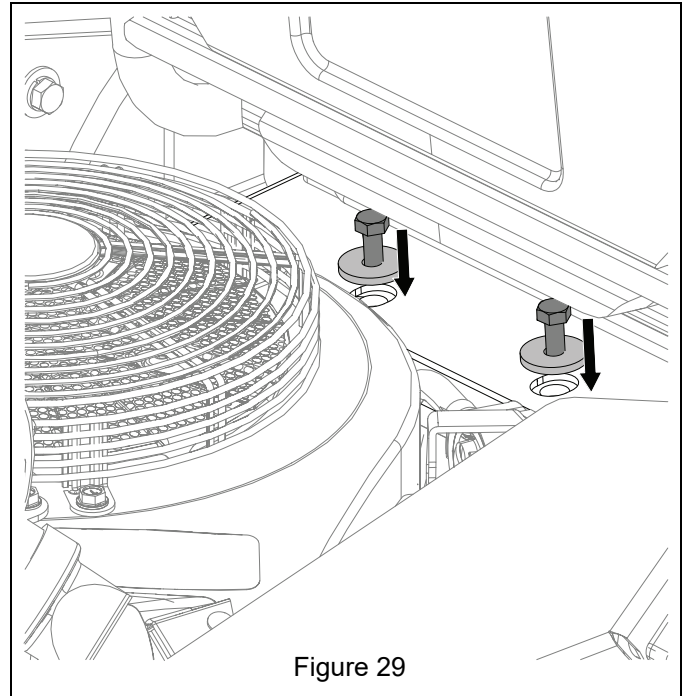


Figure 29

OPERATION

IMPORTANT: Ignition key must be in the run position to operate electric deck lift.

- Determine height of cut (HOC) desired.
- Press back of deck lift switch to raise deck higher than desired HOC.
- Rotate HOC adjustment dial to desired setting.
- Press front of deck lift switch to lower deck to rest on selected HOC setting.
- If moving deck to transport position, raise deck to its highest position, engage transport lock lever and lower deck until it stops at transport position.

NOTICE: Electric deck lift is designed to raise and lower deck only, not to hold deck in position. ALWAYS ensure that deck is resting on HOC wheel when mowing or transporting unit.