



**ARIENS®**

# Log Splitter

## Parts Manual

***Model:***

917033

917034



## THE MANUAL

---

Before you operate your unit, carefully and completely read manuals supplied with the unit. The contents will provide you with an understanding of safety instructions and controls during normal operation and maintenance.

For your safety and the safety of others always read, understand, and follow all DANGER, WARNING, and CAUTION messages found in manuals and on safety decals.

Hardware descriptions are given in decimals.

Decimals to Fractions			
.063	1/16	.563	9/16
.125	1/8	.625	5/8
.188	3/16	.688	11/16
.250	1/4	.750	3/4
.313	5/16	.813	13/16
.375	3/8	.875	7/8
.438	7/16	.938	15/16
.500	1/2	1.00	1

## SERVICE AND REPLACEMENT PARTS

---

When ordering replacement parts or making service inquiries, know the Model and Serial numbers of your unit and engine.

Numbers are located on the product registration card in the unit literature package. They are printed on a serial number label, located on the frame of your unit.

- Record Unit Model and Serial numbers here:

- Record Engine Model and Serial numbers here:

## UNAUTHORIZED REPLACEMENT PARTS

Use only Ariens replacement parts. The replacement of any part on this vehicle with anything other than an Ariens authorized replacement part may adversely affect the performance, durability, or safety of this unit and may void the warranty. Ariens disclaims liability for any claims or damages, whether warranty, property damage, personal injury or death arising out of the use of unauthorized replacement parts.

## PRODUCT REGISTRATION

---

The Ariens dealer must register the product at the time of purchase. Registering the product will help the company process warranty claims or contact you with the latest service information. All claims meeting requirements during the limited warranty period will be honored, whether or not the product registration card is returned. Keep a proof of purchase if you do not register your unit.

**Customer Note:** If Dealer does not register your product, please fill out, sign and return the product registration card to Ariens or go to [www.ariens.com](http://www.ariens.com).

## YOUR SATISFACTION IS IMPORTANT

---

Questions? Please follow these helpful steps:

1. Refer to the manuals supplied with your unit.  
They will guide you through safe and proper operation and maintenance.  
They contain specifications on your unit.  
If your questions are not answered in these manuals, go to step number two.
2. Contact Your Dealer.  
Our dealers will be happy to supply any service or advice required to keep your unit operating at peak efficiency.  
A factory trained staff is available to support your equipment needs. They stock genuine Ariens parts and lubricants manufactured with the same precision and skill as the original.  
If your questions are not resolved by the support staff, ask for the manager or owner.  
When contacting your Dealer supply your model and serial numbers.

## TO SPEED PARTS ORDERING:

1. Know the model and serial numbers of your unit.
2. Know the part number required.
3. Know the quantity required.
4. Know the part description.

# MODELS

---

**Model 917033 (27-Ton Log Splitter)**  
Serial No. 000101 +

**Model 917034 (34-Ton Log Splitter)**  
Serial No. 000101 +

# TABLE OF CONTENTS

---

Decals ..... 4

Decals ..... 5

Engine ..... 6

Engine ..... 7

Frame and Tires ..... 8

Beam ..... 9

Beam ..... 10

Hydraulic Hoses and Fittings ..... 11

Hydraulic Hoses and Fittings ..... 12

Hydraulic Diagram..... 13

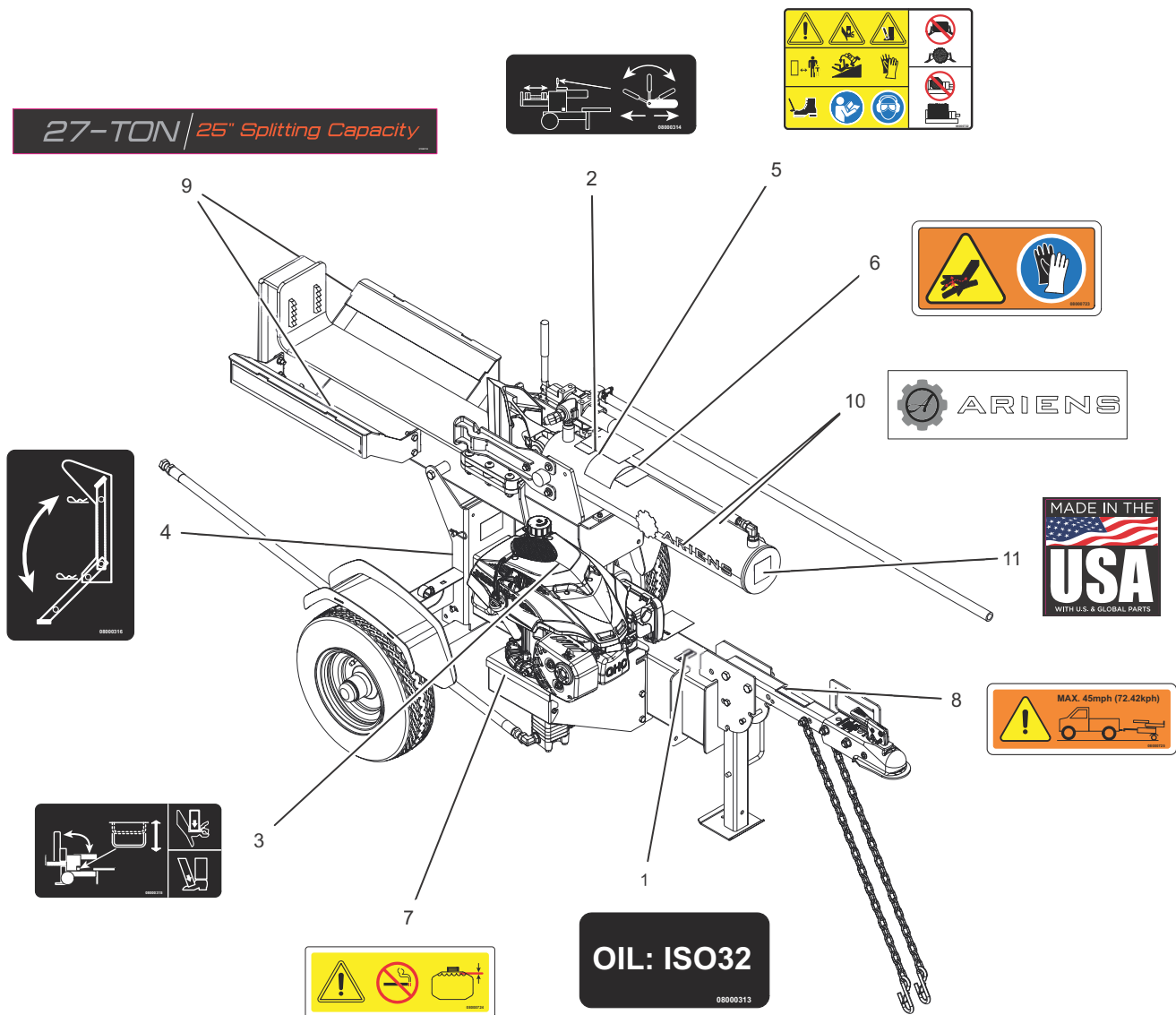
Hitch and Stand..... 14

Accessories ..... 15

Accessories – Cont. .... 16

Accessories – Cont. .... 17

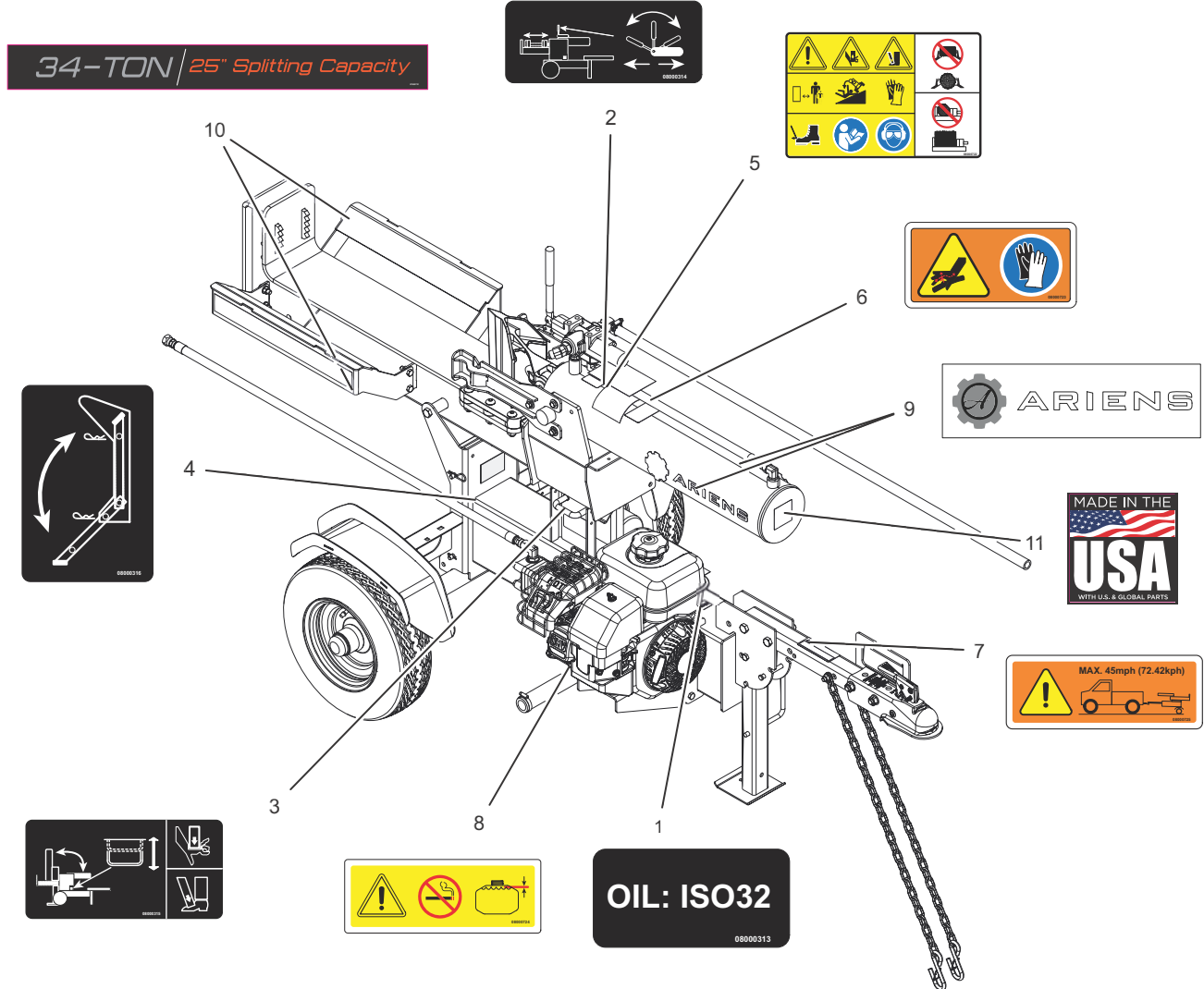
## Model 917033



BOM ID	Number	Qty	Description
1	08000313	1	DECAL, LOG SPLITTER HYDRAULIC OIL
2	08000314	1	DECAL, LOG SPLITTER RAM OPERATION
3	08000315	1	DECAL, LOG SPLITTER TILT OPERATION
4	08000316	1	DECAL, LOG SPLITTER REAR STAND
5	08000722	1	DECAL, DANGER LOG SPLITTER
6	08000723	1	DECAL, HYD WARNING
7	08000724	1	DECAL, FUEL WARNING
8	08000725	1	DECAL, TOWING
9	07800730	2	DECAL, CRADLE -27 TON
10	07800728	2	DECAL, ARIENS
11	08001038	1	DECAL, MADE IN USA

# DECALS

## Model 917034

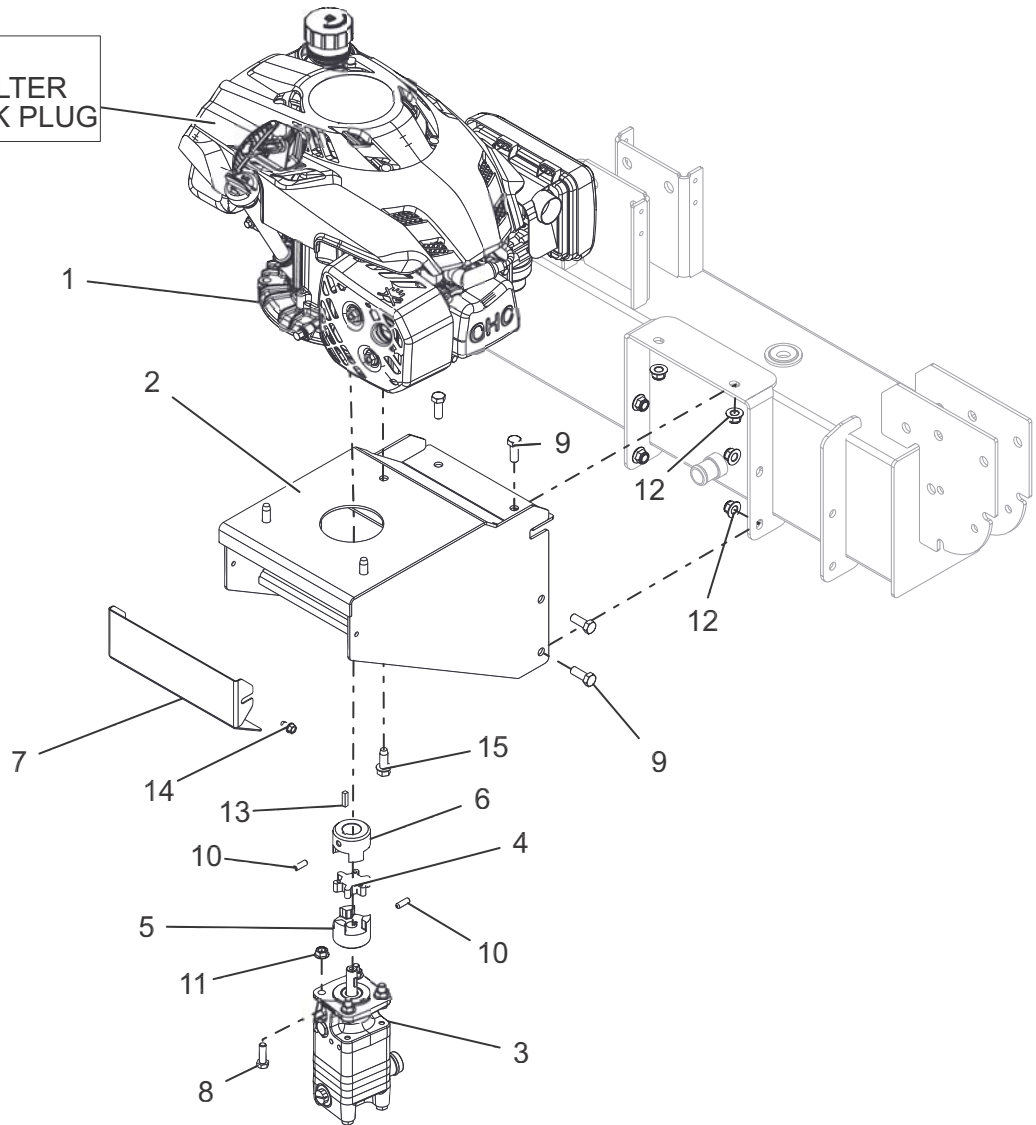


BOM ID	Number	Qty	Description
1	08000313	1	DECAL, LOG SPLITTER HYDRAULIC OIL
2	08000314	1	DECAL, LOG SPLITTER RAM OPERATION
3	08000315	1	DECAL, LOG SPLITTER TILT OPERATION
4	08000316	1	DECAL, LOG SPLITTER REAR STAND
5	08000722	1	DECAL, DANGER LOG SPLITTER
6	08000723	1	DECAL, HYD WARNING
7	08000725	1	DECAL, TOWING
8	08000724	1	DECAL, FUEL WARNING
9	07800728	2	DECAL, ARIENS
10	07800731	2	DECAL, CRADLE -34 TON
11	08001038	1	DECAL, MADE IN USA

# ENGINE

## Model 917033

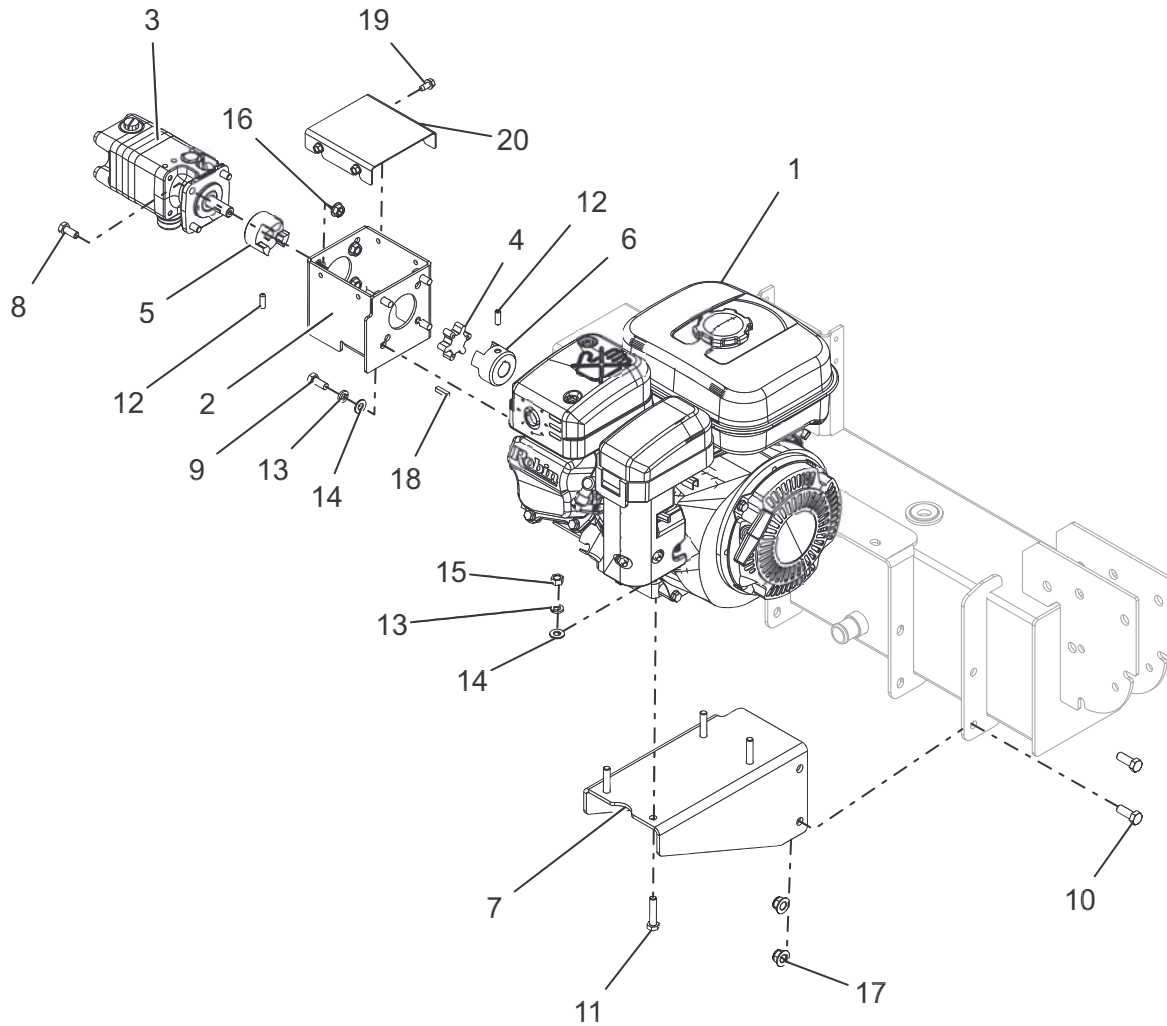
SERVICE ITEMS:  
21100120 - AIR FILTER  
21100122 - SPARK PLUG



BOM ID	Number	Qty	Description
1	08201017	1	ENGINE, SUBARU EA190 (CARB) LS
2	51705200	1	WLDMT, ENGINE MOUNT (ORANGE)
3	03926900	1	PUMP, SPLITTER - 11 GPM
4	04586500	1	COUPLER, CONNECTOR SPIDER
5	04586600	1	COUPLER, DRIVE 1/2"
6	04586800	1	COUPLER, DRIVE 7/8"
7	04974759	1	COVER, COUPLER (ORANGE)
8	05946900	4	BLT-HEX .31-18X1.00 GR5 YWZC
9	05948700	6	BLT-HEX .38-16X1.00 GR5 YWZC
10	06000222	2	SCR-SET, 25-20X.75 SKHCUPDL REV
11	06543100	4	NUT, LK-TOP-FLG .312-18 YWZC
12	06545500	6	NUT-LK-NYL-FLG .38-16 YWZC
13	06606100	1	KEY-SQ .188X.188X.750
14	07400034	2	SCR-TAP .25-20X.50 HWH TR YWZ
15	07414100	3	SCR-TAP .38-16X1.00 HWH TR YZ

# ENGINE

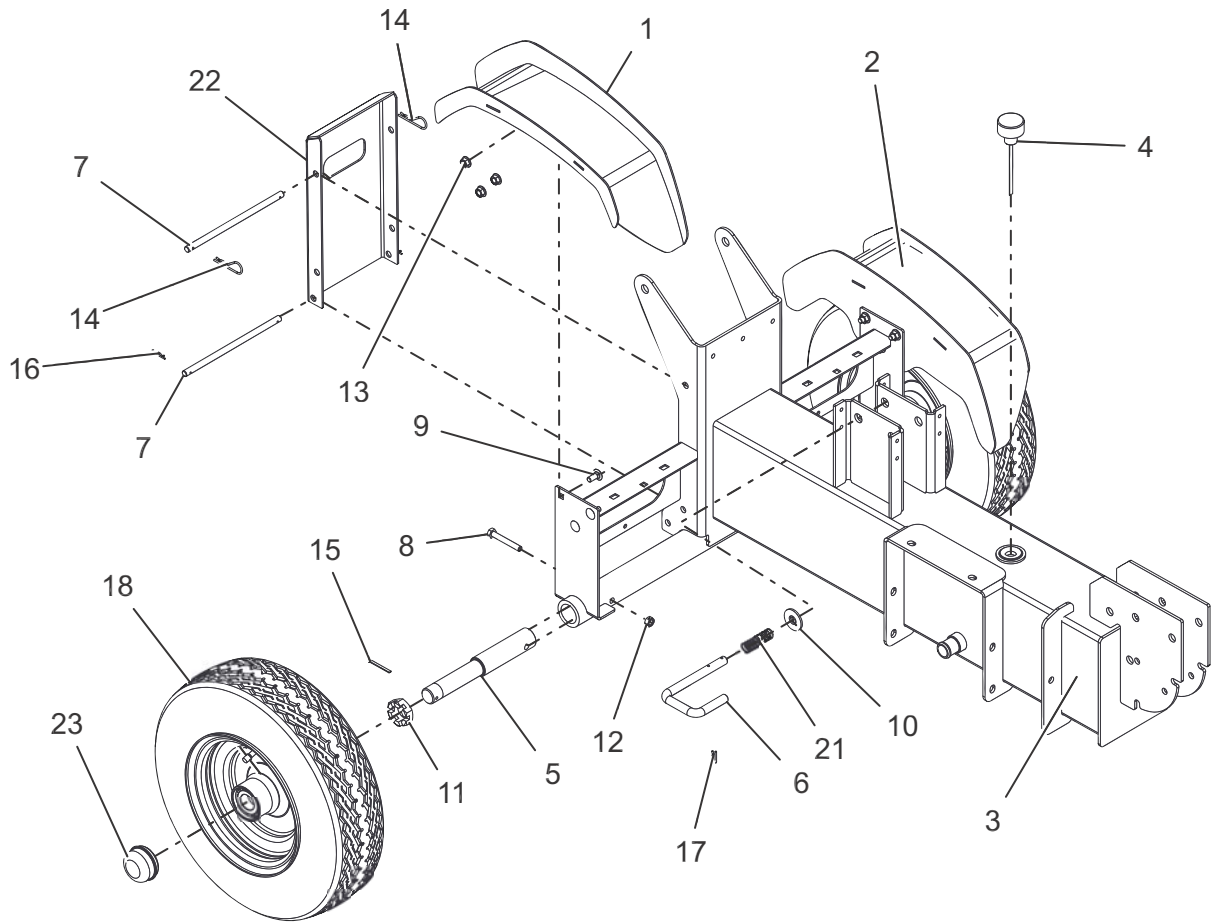
## Model 917034



BOM ID	Number	Qty	Description
1	08200635	1	ENGINE, SUBARU SP120 (CARB)
2	03858351	1	WLDMT, BRKT - PUMP MOUNT
3	03874000	1	PUMP, SPLITTER 13 GPM
4	04586500	1	COUPLER, CONNECTOR SPIDER
5	04586600	1	COUPLER, DRIVE 1/2"
6	04586700	1	COUPLER, DRIVE 3/4"
7	04966959	1	MOUNT, ENGINE (ORANGE)
8	05947000	4	BLT-HEX .31-18X.75 GR5 YWZC
9	05947300	4	BLT-HEX .31-24X.75 GR5 YWZC
10	05948700	4	BLT-HEX .38-16X1.00 GR5 YWZC
11	05952400	4	BLT-HEX .31-18X1.50 GR5 YWZC
12	06000222	2	SCR-SET, 25-20X.75 SKHCUPDL REV
13	06307400	8	WSHR-LK .31X.097 HVY YWZC
14	06437200	8	WSHR-FL-STL.344X.688X.065YWZC
15	06529200	4	NUT-HEX .31-18 YWZC
16	06543100	4	NUT, LK-TOP-FLG .312-18 YWZC
17	06545500	4	NUT-LK-NYL-FLG .38-16 YWZC
18	06606100	1	KEY-SQ .188X.188X.750
19	07400034	4	SCR-TAP .25-20X.50 HWH TR YWZ
20	51700600	1	COVER, COUPLING

# FRAME AND TIRES

Models All

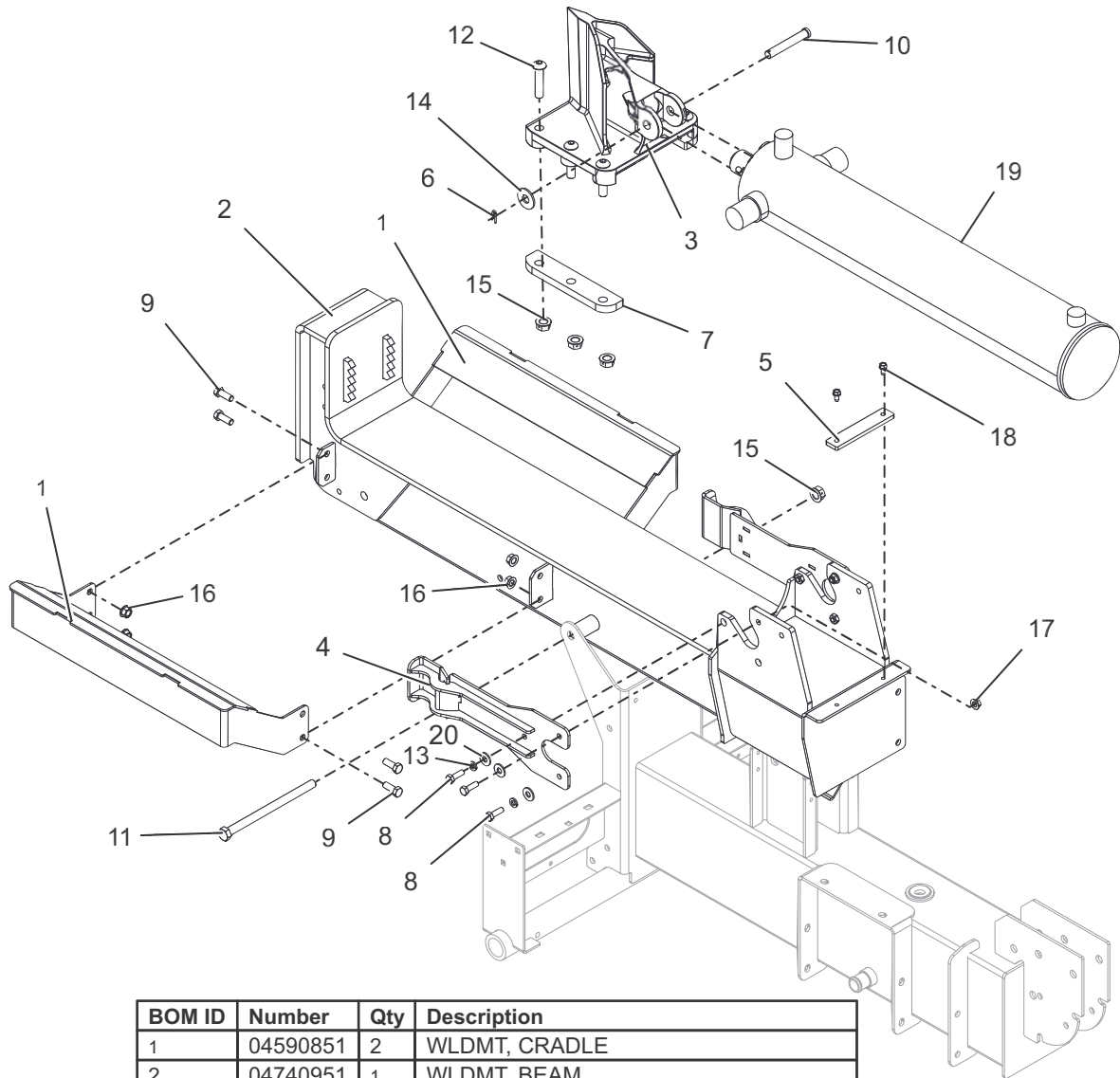


BOM ID	Number	Qty	Description
1	04969759	1	WLDMT, FENDER -RH (ORANGE)
2	04969859	1	WLDMT, FENDER -LH (ORANGE)
3	51703800	1	WLDMT, CHASSIS -SPLITTER (ORANGE)
4	00463000	1	BREATHER, DIPSTICK
5	03857000	2	AXLE, SPLITTER
6	03857500	1	LOCK, BEAM
7	04852351	2	PIN, .373 X 7.30 X 2X .109 THRU (BLACK)
8	05963700	2	BLT-HEX .31-18X2.25 GR5 YWZC
9	06215700	6	BLT-RDHDSQNK .31-18X.75 G5 YWZC
10	06442000	1	WSHR-FL-STL.563X1.38X.109YWZC
11	06513100	2	NUT, SL 1.0-14
12	06529800	2	NUT-LK-CTR .31-18 YWZC
13	06543100	6	NUT, LK-TOP-FLG .312-18 YWZC
14	06712900	2	HAIR, PIN #7 CLIP .094 X 2.31 YWZ
15	06713800	2	PIN, CTR .15 X 1.50 YWZC
16	06714800	2	PIN-HAIR, ENDRIES #25 YWZC
17	06944800	2	CLIP, SPRING
18	07101210	2	ASSM TIRE/WHEEL, 4.80/4.00-8 P47 GRAY
21	08325900	1	SPRG, COMPRESSION .058X.65X2.13
22	51700400	1	SUPPORT, REAR LEG
23	M135582	2	CAP, DUST



# BEAM

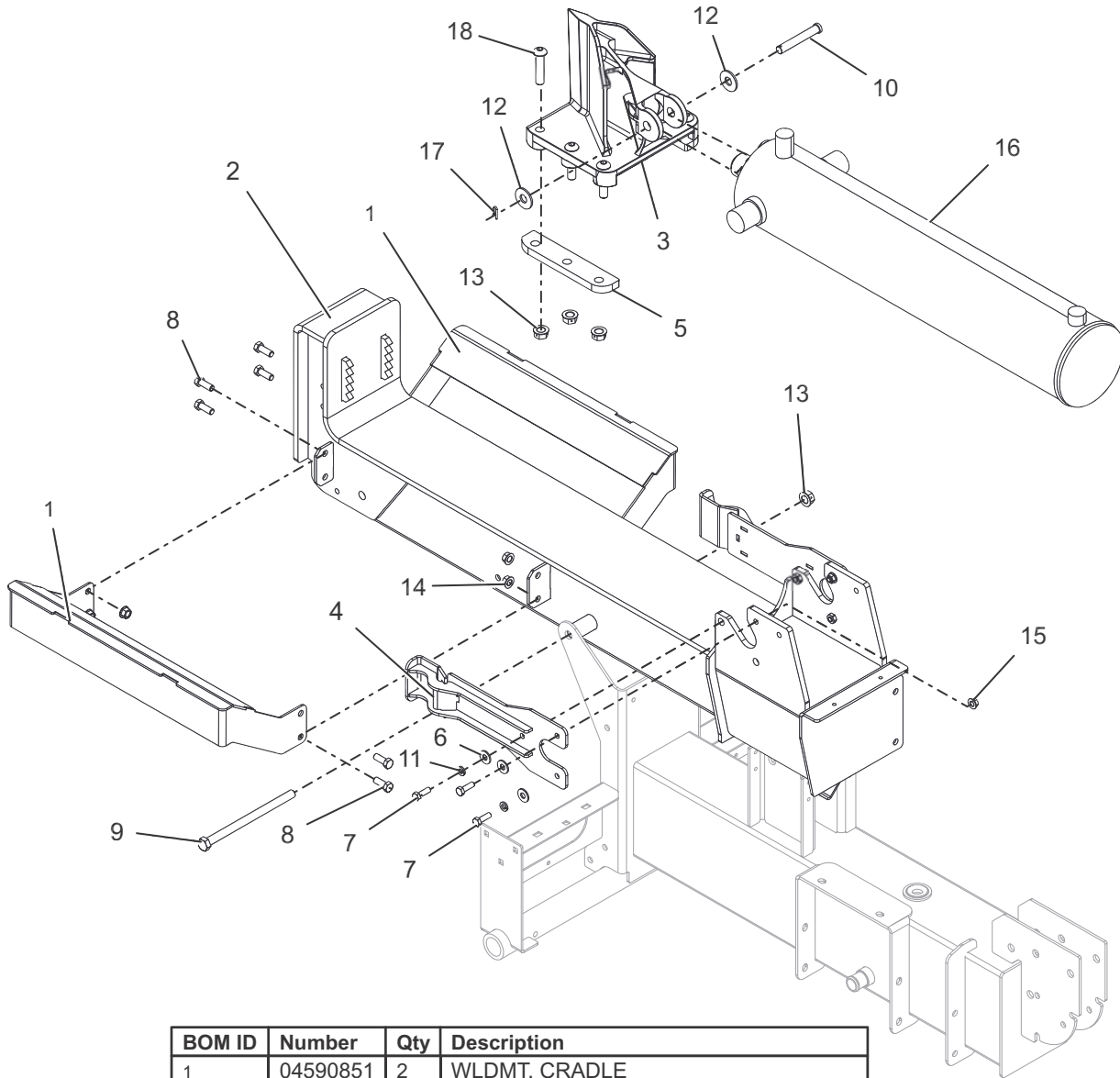
## Model 917033



BOM ID	Number	Qty	Description
1	04590851	2	WLDMT, CRADLE
2	04740951	1	WLDMT, BEAM
3	04981700	1	WEDGE, LOG SPLITTER-MACHINED
4	04861459	2	WLDMT, PLATE - STRIPPER (ORANGE)
5	03835751	1	SPCR, CYLINDER
6	06944800	1	CLIP, SPRING
7	05024251	2	RETAINER, WEDGE
8	05946900	6	BOLT, HEX 0.313-18X1 GR5
9	05948700	8	BOLT, HEX 0.375-16X1 GR5
10	01215000	1	PIN, CLEVIS -.500 X 3.250
11	05978200	1	BOLT, HEX 0.5-13X7.5 GR5
12	05900133	6	SCR, SKH
13	06307400	4	WSHR-LK .31X.097 HVY YWZC
14	06442000	2	WSHR-FL-STL.563X1.38X.109YWZC
15	06530008	7	NUT-LK-CTR-FLG .50-13 YWZC
16	06542000	8	NUT, LK-TOP-FLG .38-16 YWZC
17	06543100	2	NUT, LK-TOP-FLG .312-18 YWZC
18	07400034	2	SCR-TAP .25-20X.50 HWH TR YWZ
19	51700200	1	CYLINDER, SPLITTER - 4.5"
20	06435700	6	WSHR-FL-STL.38X.875X.083 YWZC

# BEAM

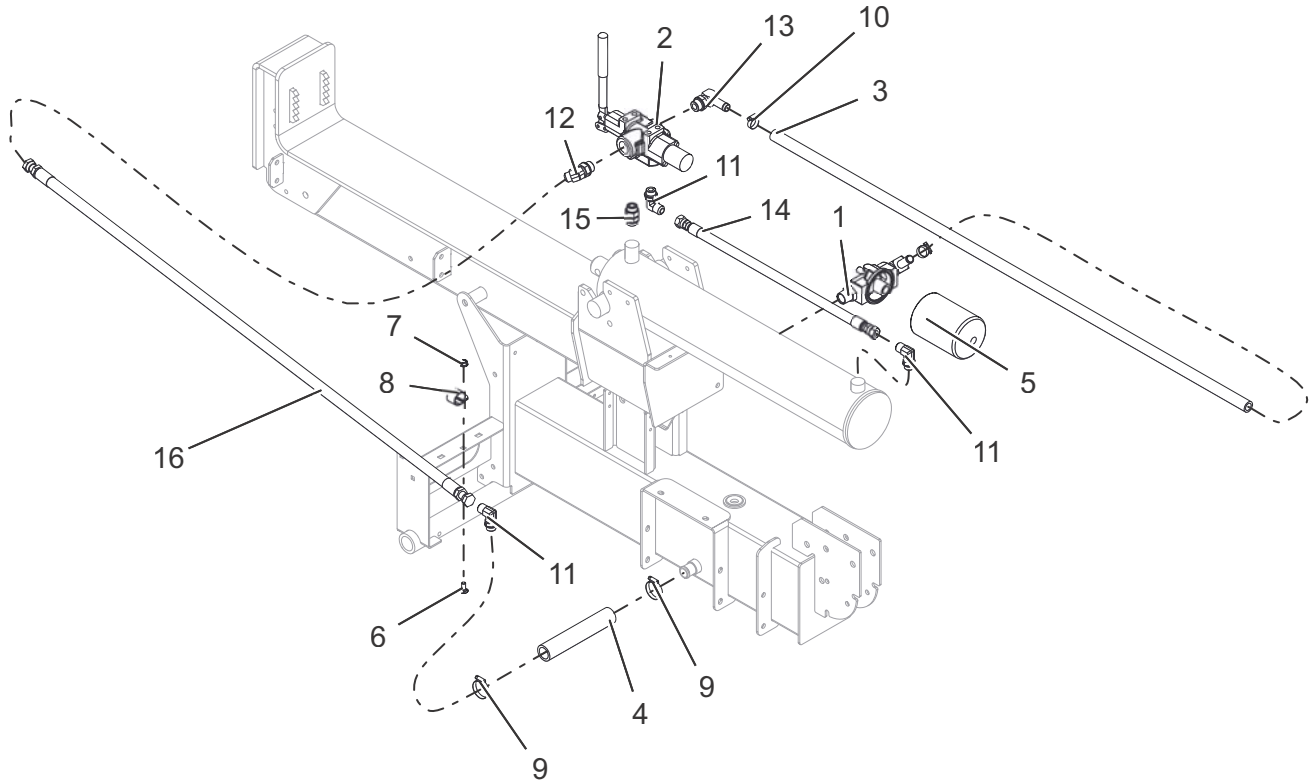
## Model 917034



BOM ID	Number	Qty	Description
1	04590851	2	WLDMT, CRADLE
2	04740951	1	WLDMT, BEAM
3	04981700	1	WEDGE, LOG SPLITTER-MACHINED
4	04861459	2	WLDMT, PLATE - STRIPPER (ORANGE)
5	05024251	2	RETAINER, WEDGE
6	06435700	6	WSHR-FL-STL.38X.875X.083 YWZC
7	05946900	6	BOLT, HEX 0.313-18X1 GR5
8	05948700	8	BOLT, HEX 0.375-16X1 GR5
9	05978200	1	BOLT, HEX 0.5-13X7.5 GR5
10	01215000	1	PIN, CLEVIS -.500 X 3.250
11	06307400	4	WSHR-LK .31X.097 HVY YWZC
12	06442000	2	WSHR-FL-STL.563X1.38X.109YWZC
13	06530008	7	NUT-LK-CTR-FLG .50-13 YWZC
14	06542000	8	NUT, LK-TOP-FLG .38-16 YWZC
15	06543100	2	NUT, LK-TOP-FLG .312-18 YWZC
16	51700700	1	CYLINDER, SPLITTER - 5"
17	06944800	1	CLIP, SPRING
18	05900133	1	SCR, SKH

# HYDRAULIC HOSES AND FITTINGS

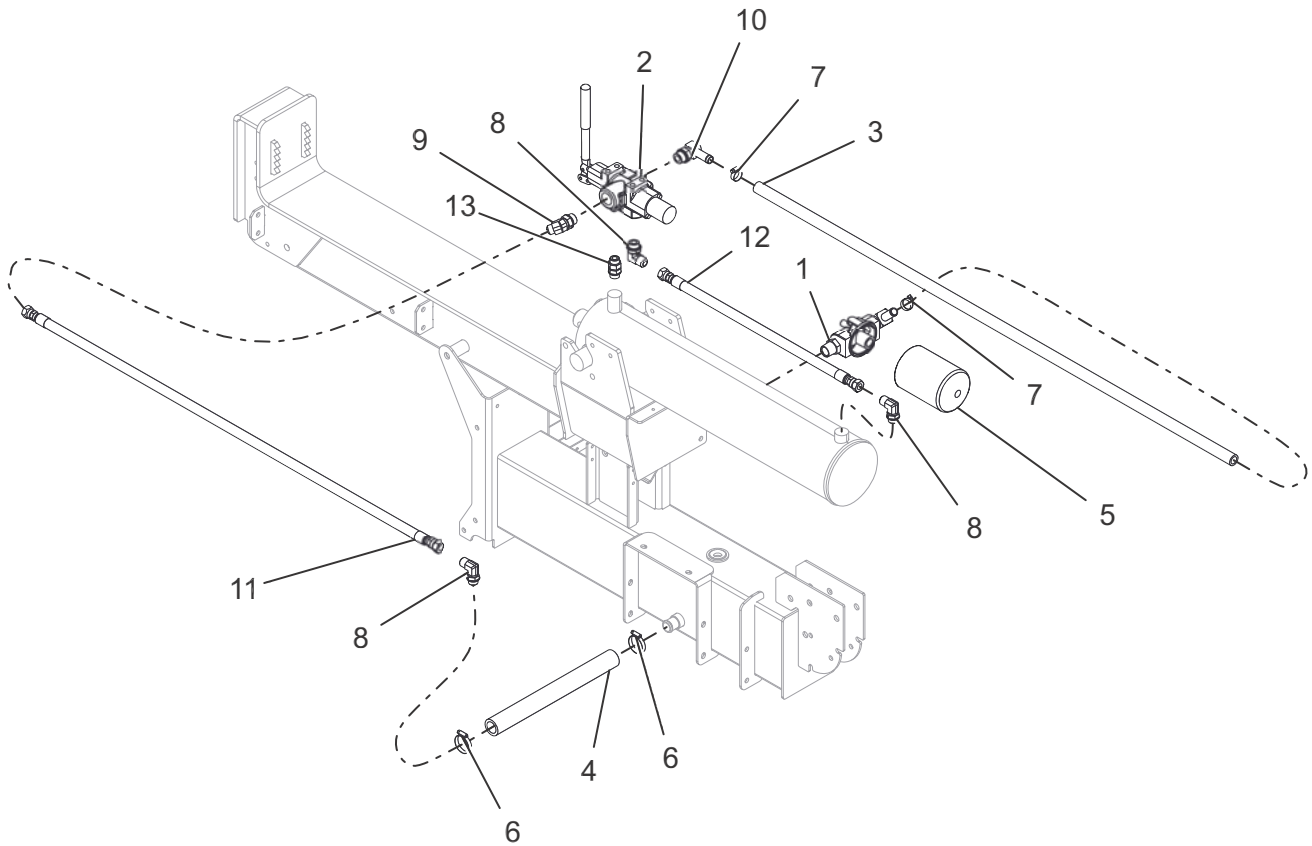
## Model 917033



BOM ID	Number	Qty	Description
1	61700400	1	ASM, FILTER HEAD
2	03846300	1	VALVE, CONTROL -SPLITTER
3	03859600	1	HOSE, HYD RETURN 10L0LA X 53"
4	04594300	1	HOSE, HYD SUCTION, 7.375"
5	04975800	1	FILTER, HYDRAULIC OIL-NO BYPASS
6	06215700	1	BLT-RDHDSQNK .31-18X.75 G5 YWZC
7	06543100	1	NUT, LK-TOP-FLG .312-18 YWZC
8	06917900	1	CLAMP, CUSHIONED STEEL REV
9	06922200	2	CLAMP, HOSE 1.50 X .81 X 1.42
10	06923500	2	CLAMP, .88 DIA HOSE
11	07001535	3	FTG, HYD. 2501-8-8
12	07001537	1	FTG, HYD. 6802-8-10
13	07001538	1	FTG, HYD. 4601-10-10
14	07001540	1	HOSE, ASM - 22"
15	07001713	1	FTG, HYD - STR 08MAORB-08MORB
16	07001717	1	HOSE, HYD - 58"

# HYDRAULIC HOSES AND FITTINGS

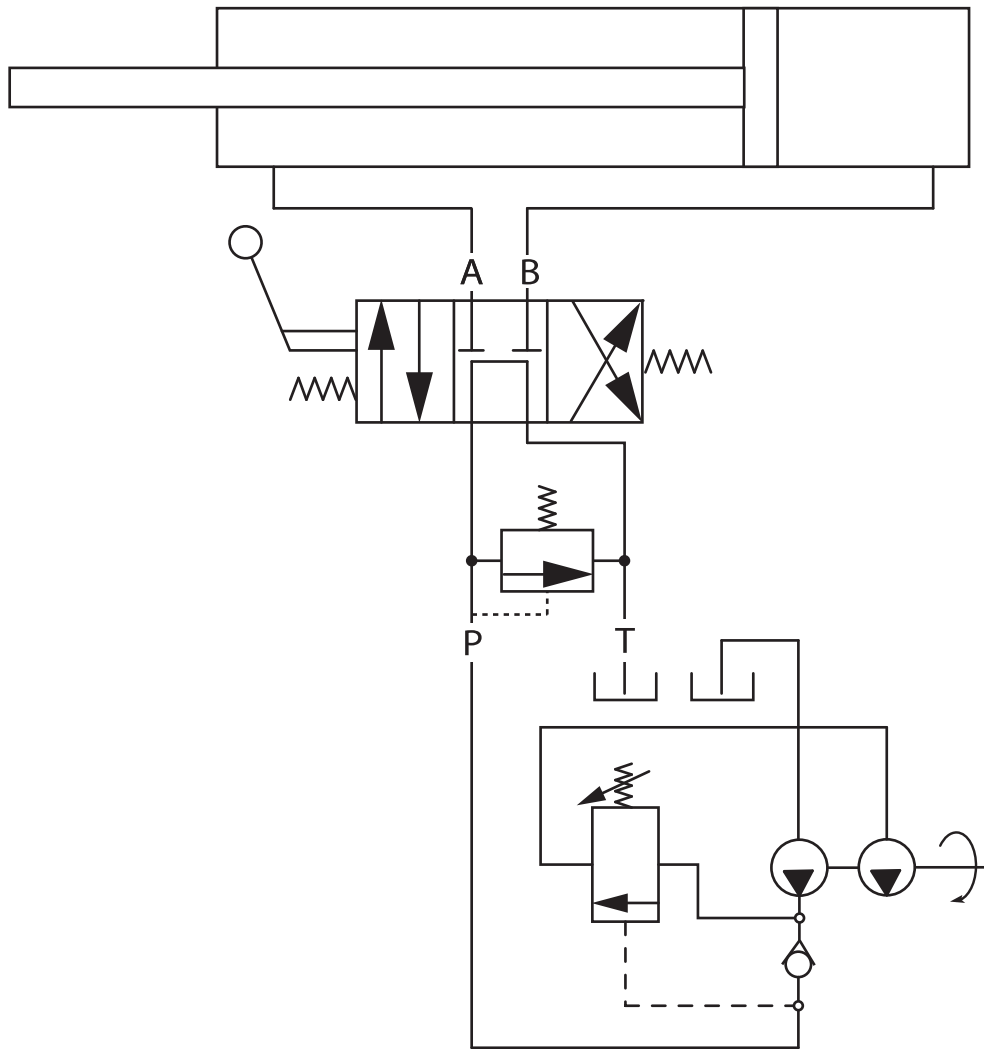
## Model 917034



BOM ID	Number	Qty	Description
1	61700400	1	ASM, FILTER HEAD
2	03846300	1	VALVE, CONTROL -SPLITTER
3	03859600	1	HOSE, HYD RETURN 10L0LA X 53"
4	03859700	1	HOSE, HYD SUCTION 16G4H X 13.5
5	04975800	1	FILTER, HYDRAULIC OIL-NO BYPASS
6	06922200	2	CLAMP, HOSE 1.50 X .81 X 1.42
7	06923500	2	CLAMP, .88 DIA HOSE
8	07001535	3	FTG, HYD. 2501-8-8
9	07001537	1	FTG, HYD. 6802-8-10
10	07001538	1	FTG, HYD. 4601-10-10
11	07001539	1	HOSE, ASM - 46"
12	07001540	1	HOSE, ASM - 22"
13	07001713	1	FTG, HYD - STR 08MAORB-08MORB

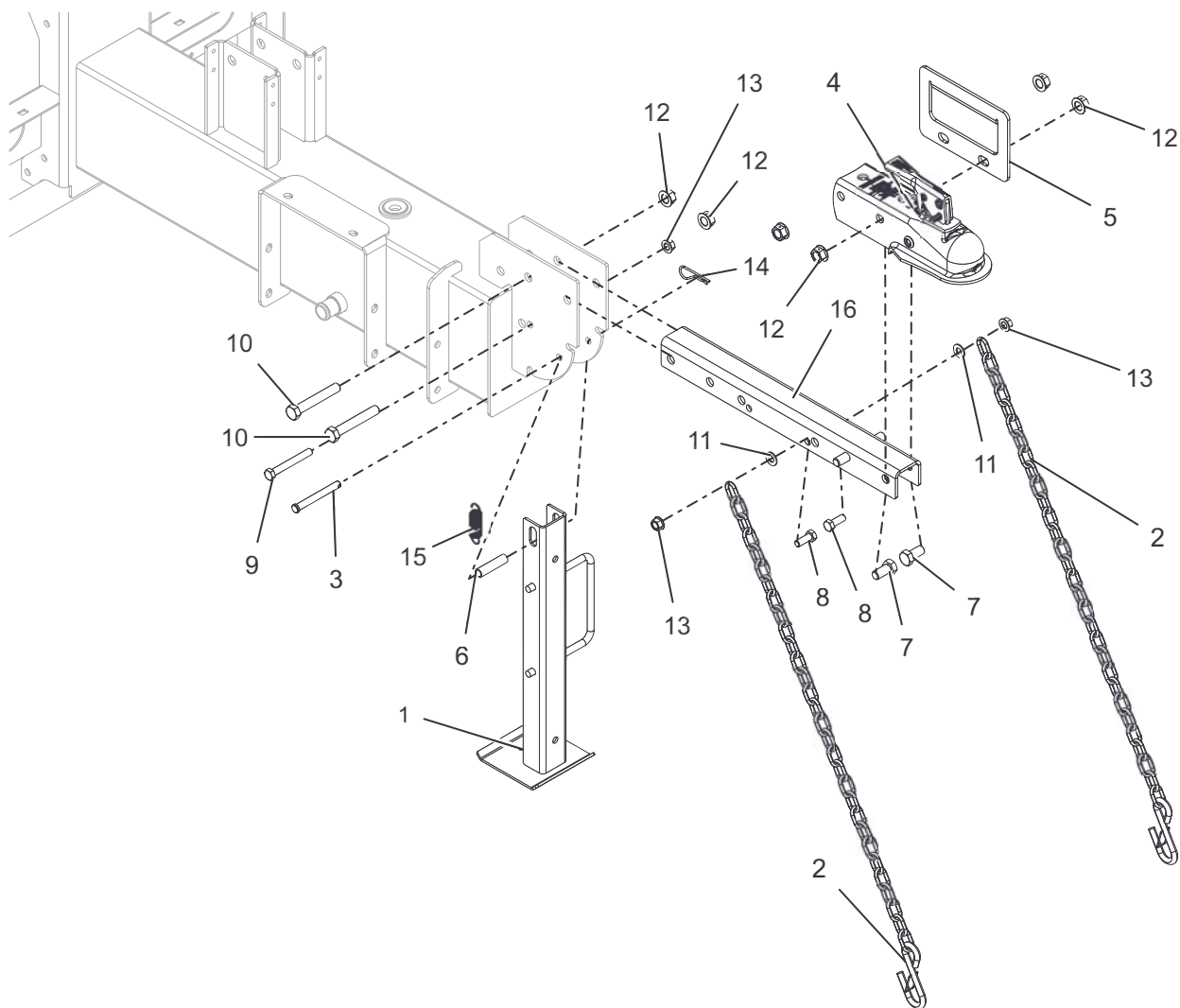
# HYDRAULIC DIAGRAM

Models All



# HITCH AND STAND

## Models All

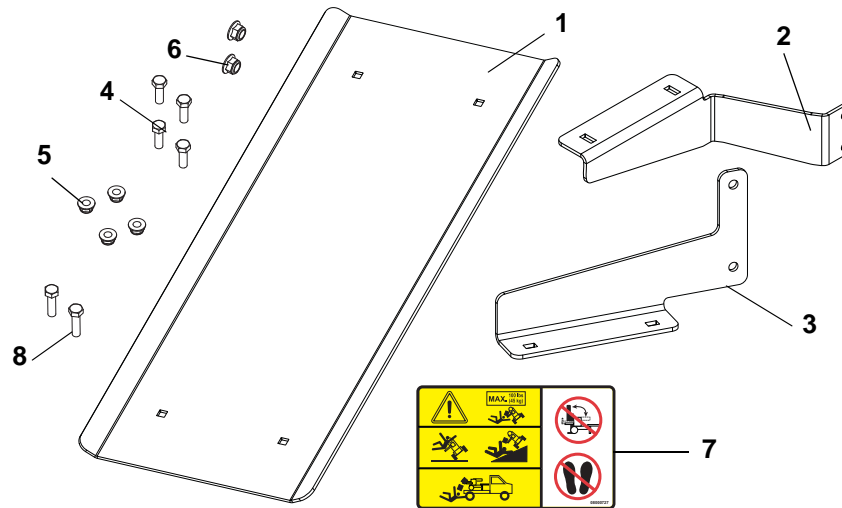


BOM ID	Number	Qty	Description
1	03938151	1	WLDMT, JACK STAND
2	04649800	2	CHAIN, SAFETY 3/16"
3	02747500	1	PIN, CLEV .375X3.25 YWZC
4	05131100	1	COUPLER, BALL -2.000"
5	04378651	1	HANDLE, SPLITTER DRAW BAR-BLACK
6	05533500	1	SPCR, WHEEL .385X.500X2.00
7	05947100	4	BOLT, HEX 0.5-13X1 GR5
8	05948700	2	BOLT, HEX 0.375-16X1 GR5
9	05957800	1	BOLT, HEX 0.375-16X3 GR5
10	05960000	2	BOLT, HEX 0.5-13X3.25 GR5
11	06436200	2	WSHR-FL-STL.406X.812X.065 YWZ
12	06530008	6	NUT-LK-CTR-FLG .50-13 YWZC
13	06542000	3	NUT, LK-TOP-FLG .38-16 YWZC
14	06712900	1	HAIR, PIN #7 CLIP .094 X 2.31 YWZ
15	08300435	1	SPRG, EXTENSION
16	51705700	1	HITCH BAR W/SAFETY DECAL

# ACCESSORIES

Models All

Work Table Kit 71702900



Item	Part No.	Qty.	Description
1	04590053	1	Table, Work
2	04589451	1	Bracket, Rear
3	04589551	1	Bracket, Front
4	06200007	4	Bolt, Round Head Square Neck .312-18 x 1
5	06545400	4	Nut, Nyloc Flange .312-18
6	06542000	2	Nut, Locking Top Flange .38-16
7	08000727	1	Decal, Splitter Table
8	05948700	2	Bolt, Hex .38-16 x 1

Light Harness Kit  
71701300

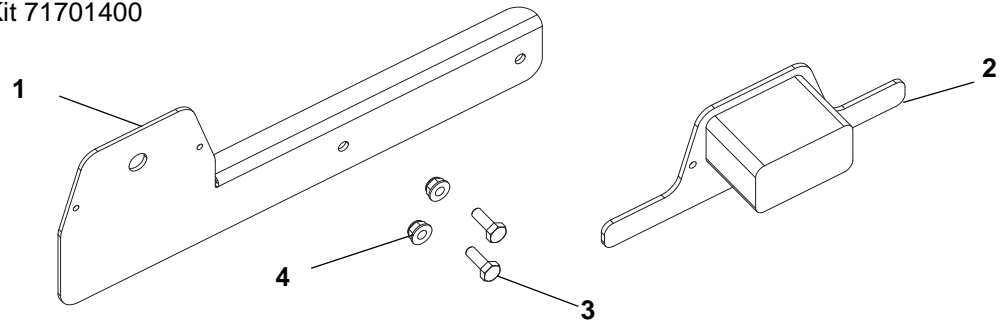


Item	Part No.	Qty.	Description
1	03888300	1	Wiring Harness, Trailer Light Kit
2	03888400	2	Housing, Tail Light With Bulb
3	03888500	2	Grommet, Tail Light Mounting

# ACCESSORIES – CONT.

Models All

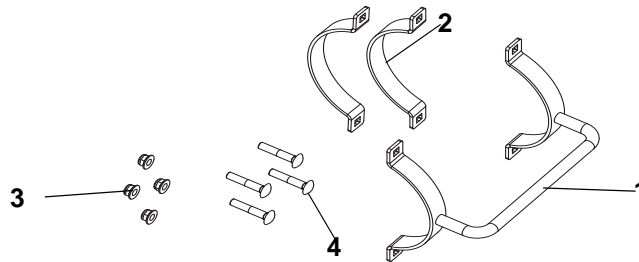
### License Plate Light Kit 71701400



PC0850

Item	Part No.	Qty.	Description
1	03910251	1	Bracket, License Plate (Ships preassembled with item 2)
2	03888600	1	Light (Ships preassembled with item 1)
3	05946800	2	Bolt, Hex .25-20 x .75
4	06500012	2	Nut, Nyloc Flange .25-20

### Handle Kit 71701800



Item	Part No.	Qty.	Description
1	03897651	1	Weldment, Hydraulic Cylinder Clamp
2	03897851	2	Bracket, Cylinder Clamp
3	06545400	4	Nut, Nyloc Flange .312-18
4	06220200	4	Bolt, Round Head Square Neck .312-18 x 1.75

### Engine Cover Kit 71701500



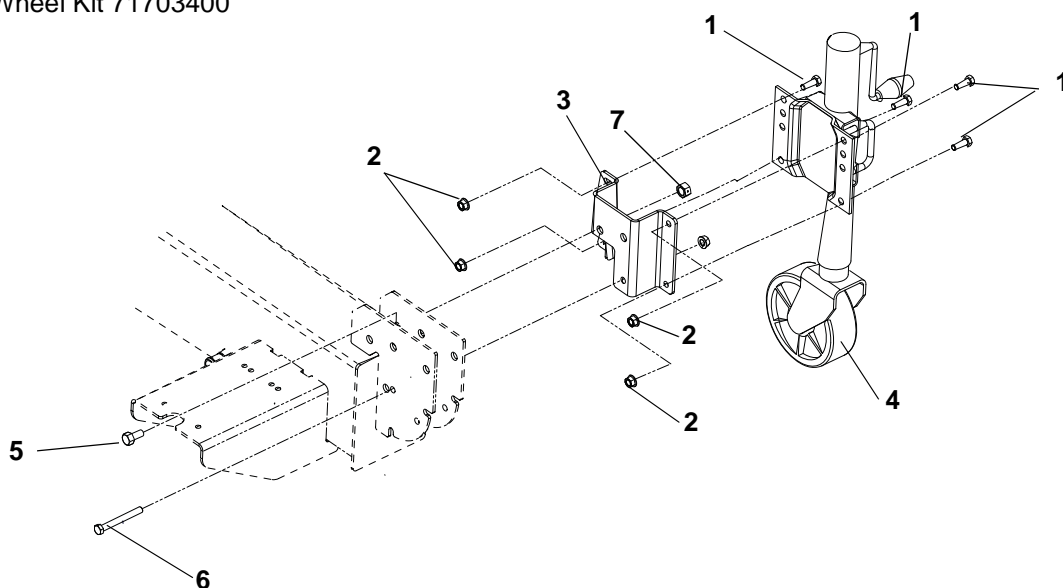
Item	Part No.	Qty.	Description
1	03888900	1	Cover, Engine



## ACCESSORIES – CONT.

### Models All

#### Jack Stand w/ Wheel Kit 71703400



Item	Part No.	Qty.	Description
1	05948700	4	Bolt, Hex .38-16 x 1.00 GR5
2	06542000	4	Nut, Top Flange Locking .38-16
3	03938251	1	Bracket, Mounting
4	03938300	1	Stand, Jack w/Wheel
5	05947100	1	Bolt, Hex .50-13 x 1.00
6	05961100	1	Bolt, Hex .38-16 x 3.25 GR5
7	06530008	1	Nut, Center Locking Flange .50-13



**ARIENS®**

Ariens Company  
655 West Ryan Street  
Brillion, WI 54110

**[ariensstore.com](http://ariensstore.com)**  
(Dealer Locator)

**[ariens.custhelp.com](http://ariens.custhelp.com)**  
(Customer Support)



 An *Ariens* Company Brand