



# ZT XL

## Parts Manual

---

### Models

915160 – ZT XL 42  
(SN 030000 +)

915162 – XT XL 48  
(SN 030000 +)

915164 – ZT XL 54  
(SN 030000 +)



The use of any gasoline exceeding 10% ethanol (E10) or 10% MTBE will void the product warranty.  
L'utilisation d'une essence contenant plus de 10% d'éthanol (E10) ou de 10% de MTBE annulent la garantie.  
El uso de cualquier otro tipo de gasolina con un porcentaje superior al 10% de etanol (E10) o al 10% de MTBE invalidará la garantía del producto.

# THE MANUAL

---

Before you operate your unit, carefully and completely read manuals supplied with the unit. The contents will provide you with an understanding of safety instructions and controls during normal operation and maintenance.

For your safety and the safety of others always read, understand, and follow all DANGER, WARNING, and CAUTION messages found in manuals and on safety decals.

Hardware descriptions are given in decimals.

Decimals to Fractions			
.063	1/16	.563	9/16
.125	1/8	.625	5/8
.188	3/16	.688	11/16
.250	1/4	.750	3/4
.313	5/16	.813	13/16
.375	3/8	.875	7/8
.438	7/16	.938	15/16
.500	1/2	1.00	1

## SERVICE AND REPLACEMENT PARTS

---

When ordering replacement parts or making service inquiries, know the Model and Serial numbers of your unit and engine.

Numbers are located on the product registration card in the unit literature package. They are printed on a serial number label, located on the frame of your unit.

- Record unit model and serial numbers here:

- Record engine model and serial numbers here:

## UNAUTHORIZED REPLACEMENT PARTS

Use only Gravelly replacement parts. The replacement of any part on this vehicle with anything other than an Gravelly authorized replacement part may adversely affect the performance, durability, or safety of this unit and may void the warranty. Gravelly disclaims liability for any claims or damages, whether warranty, property damage, personal injury or death arising out of the use of unauthorized replacement parts.

# PRODUCT REGISTRATION

---

The Gravelly dealer must register the product at the time of purchase. Registering the product will help the company process warranty claims or contact you with the latest service information. All claims meeting requirements during the limited warranty period will be honored, whether or not the product registration card is returned. Keep a proof of purchase if you do not register your unit.

**Customer Note:** If Dealer does not register your product, please fill out, sign and return the product registration card to Gravelly or go to [www.gravelly.com](http://www.gravelly.com).

## YOUR SATISFACTION IS IMPORTANT

---

**Questions? Please follow these helpful steps:**

1. Refer to the manuals supplied with your unit.  
They will guide you through safe and proper operation and maintenance.  
They contain specifications on your unit.  
If your questions are not answered in these manuals, go to step number two.
2. Contact Your Dealer.  
Our dealers will be happy to supply any service or advice required to keep your unit operating at peak efficiency.  
A factory trained staff is available to support your equipment needs. They stock genuine Gravelly parts and lubricants manufactured with the same precision and skill as the original.  
If your questions are not resolved by the support staff, ask for the manager or owner.  
When contacting your Dealer supply your model and serial numbers.

## TO SPEED PARTS ORDERING:

1. Know the model and serial numbers of your unit.
2. Know the part number required.
3. Know the quantity required.
4. Know the part description.

## MODELS

---

### **Model 915160 (42)**

FR651 Kawasaki with 42" Mower  
Serial No. 030000 +

### **Model 915162 (48)**

FR691 Kawasaki with 48" Mower  
Serial No. 030000 +

### **Model 915164 (54)**

FR691 Kawasaki with 54" Mower  
Serial No. 030000 +

## TABLE OF CONTENTS

---

### **DECALS**

---

Decals – Safety . . . . .	4
Decals – Style . . . . .	5

### **MAIN FRAME AND TRANSAXLES**

---

Frame, Hood, Footrest, Casters and Tires. . . . .	6
Seat and Seat Support. . . . .	8
Transaxle, Dump Valves and Rear Wheels . . . . .	9
Transaxle – Left Hand . . . . .	10
Transaxle – Right Hand . . . . .	12

### **OPERATOR CONTROLS**

---

Parking Brake. . . . .	14
Steering Controls . . . . .	16

### **FUEL TANKS AND ENGINE**

---

Engine, Exhaust, Belts and Idlers . . . . .	18
Fuel Tank . . . . .	20

### **ELECTRICAL SYSTEM**

---

Continuity Diagram. . . . .	21
Electrical System . . . . .	22
Wiring Diagram . . . . .	24

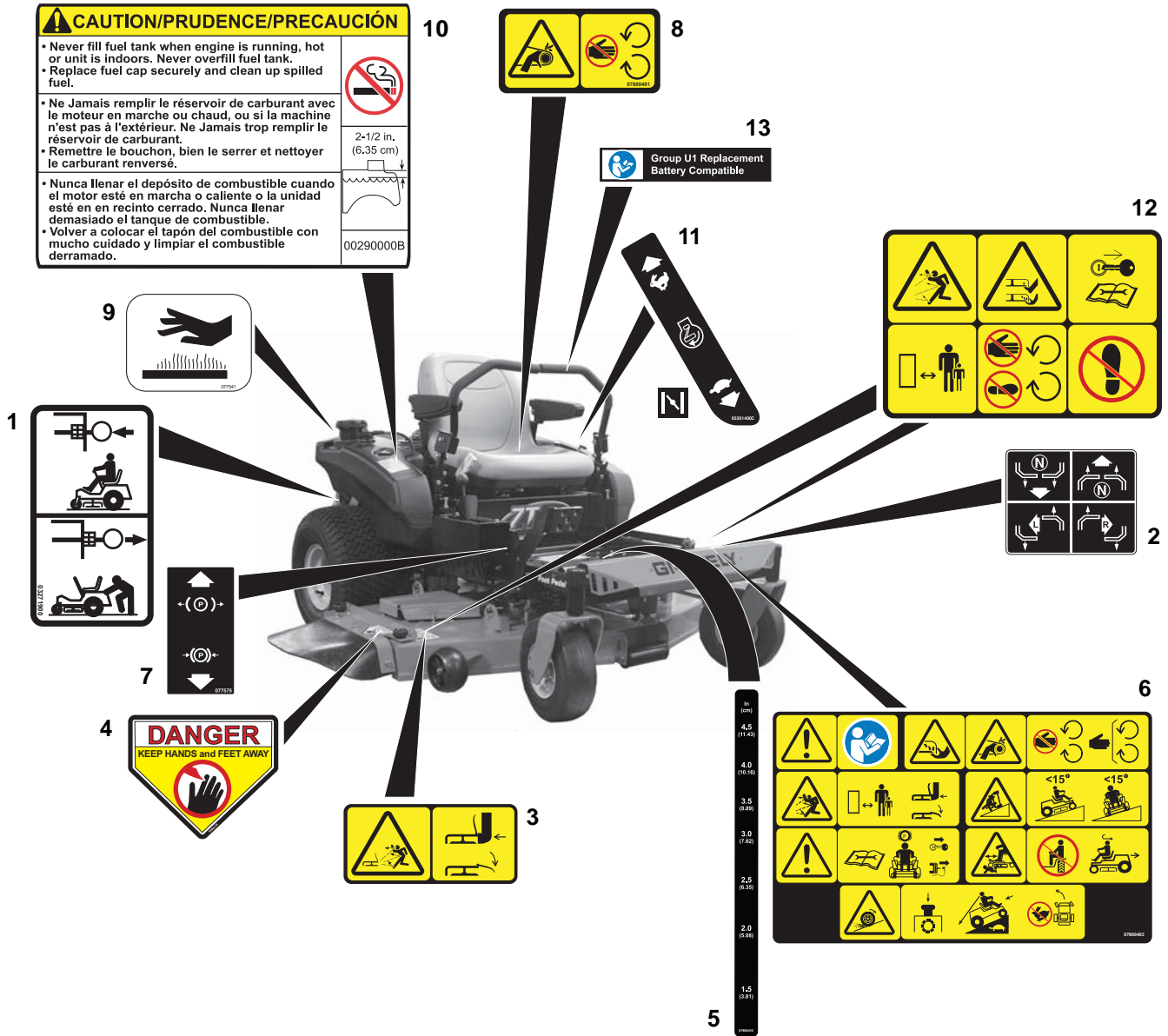
### **MOWER DECKS**

---

Mower Deck Lift . . . . .	26
Mower Deck, Belt, Idlers and Blades . . . . .	28
Anti-Scalp Wheels . . . . .	30

# DECALS – SAFETY

Models 915160, 162, 164



Item	Part No.	Qty.	Description
1	03271900	2	Decal, Transmission Disconnect
2	07757600	1	Decal, Instructional Steering
3	07800402	1	Decal, Safety, Deck Guarding
4	02988100	1	Decal, Danger
5	07800416	1	Decal, Cut Height
6	07800403	1	Decal, Safety, Main
7	07757500	1	Decal, Parking Brake Lever
8	07800401	1	Decal, Safety, Guarding
9	07754100	1	Decal, Hot Surface
10	00290000	1	Decal, Fuel Warning
11	05301400	1	Decal, Control
12	07800340	2	Decal, Mower Deck Safety
13	07800336	2	Decal, Battery Replacement

# DECALS – STYLE

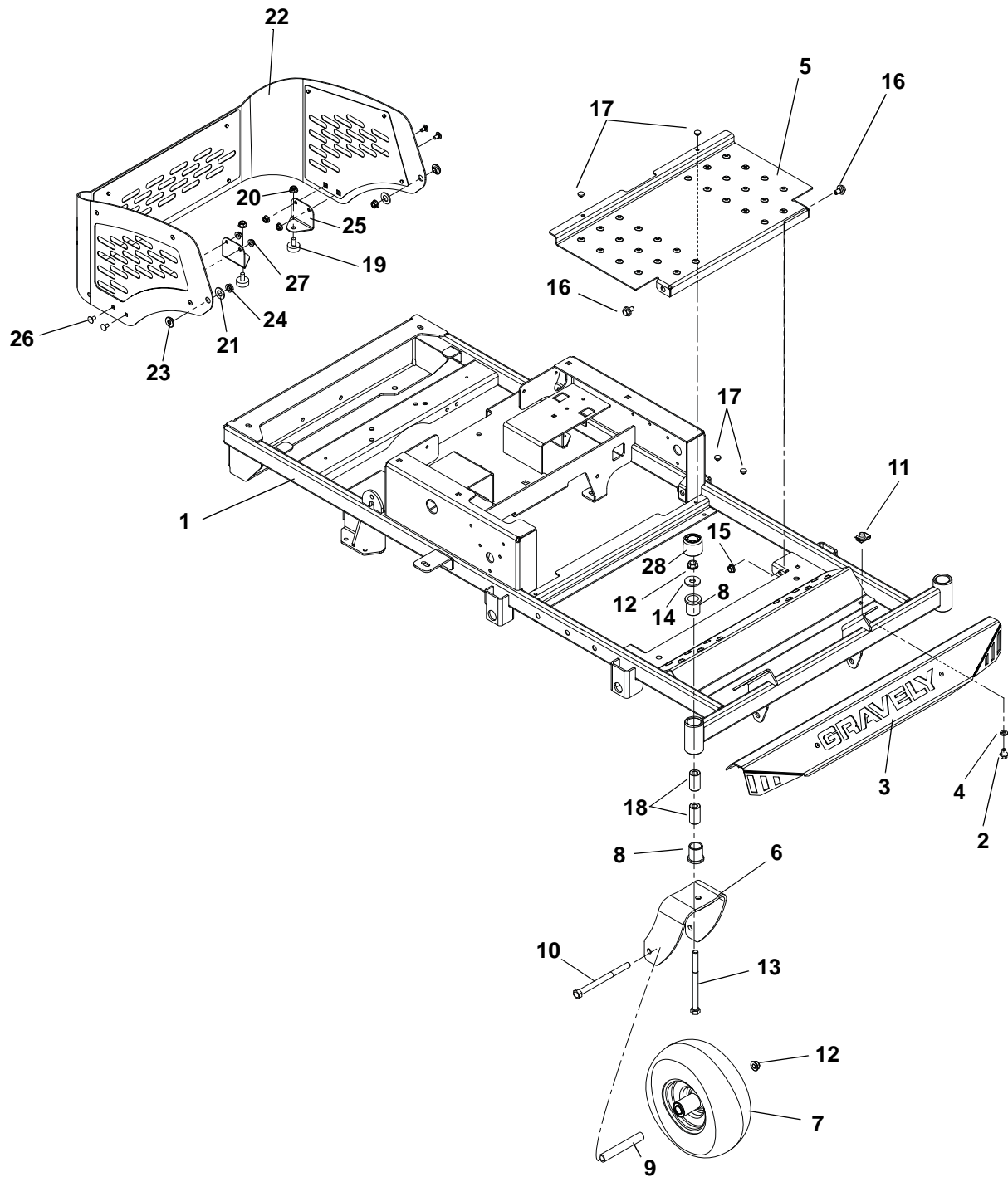
Models 915160, 162, 164



Item	Part No.	Qty.	Description
1	07800215	1	Decal, 42 ZT XL
	07800216	1	Decal, 48 ZT XL
	07800217	1	Decal, 54 ZT XL
2	08000526	1	Decal, Gravely American Heritage

# FRAME, HOOD, FOOTREST, CASTERS AND TIRES

Models 915160, 162, 164



# FRAME, HOOD, FOOTREST, CASTERS AND TIRES

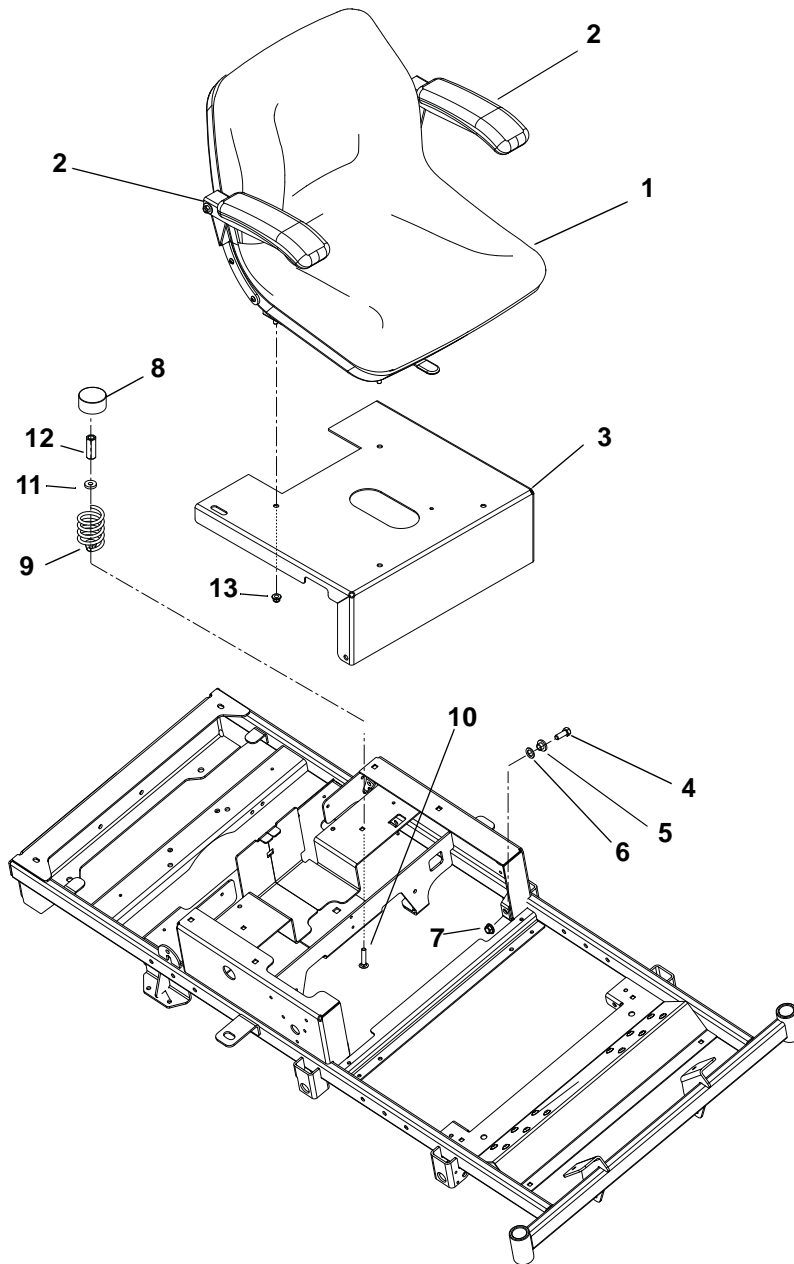
---

## Models 915160, 162, 164

Item	Part No.	Qty.	Description
1	04559151	1	Weldment, Frame XL
2	05948700	2	Bolt, Hex .38-16 x 1.00 Grade 5
3	51526800	1	Assembly, Foot-Rest XL
4	06308800	2	Washer, Locking .38 x .094 Regular
5	01923251	1	Deck Access Panel
6	03368553	2	Fork, Caster
7	07100124	2	Wheel/Tire Assembly, 11.0 x 4.0 x 5.0, Monitor
8	05500934	4	Bushing, Flange 1.00 x 1.25 x 1.50 x 1.50
9	00278500	2	Spacer, Rolled Wheel
10	05964400	2	Bolt, Hex .50-13 x 6.50 Grade 5
11	07053300	2	Nut, Retainer .375-16 x .37
12	06543600	4	Nut, Locking Top Flange .50-13
13	05962200	2	Bolt, Hex .50-13 x 5.00 Grade 5
14	06436400	2	Washer, Flat Steel .511 x 1.441 x .125
15	06542000	2	Nut, Locking Top Flange .38-16
16	07056700	2	Bolt, Shoulder .375-16 x .135
17	07503100	6	Bumper Grommet .125 x .250 Diameter
18	00363100	4	Spacer, Caster Fork
19	07533600	2	Bumper, Rubber
20	06530400	2	Nut, Serrated Flange .31-18
21	06443300	2	Washer, Flat Nylon .52 x 1.00 x .08
22	51526700	1	Assembly, Engine Wrap XL
23	05501127	2	Bushing, Flange .325 x .499 x .3 x .875
24	06528700	2	Nut, Locking Center Flange .31-18
25	04717951	2	Brkt, XL Engine Wrap Foot
26	06220600	4	Bolt, Round Head Square Neck .25-20 x .50
27	06500710	4	Nut, Locking Center Flange .25-20
28	07500233	2	Cap, Dust

# SEAT AND SEAT SUPPORT

Models 915160, 162, 164

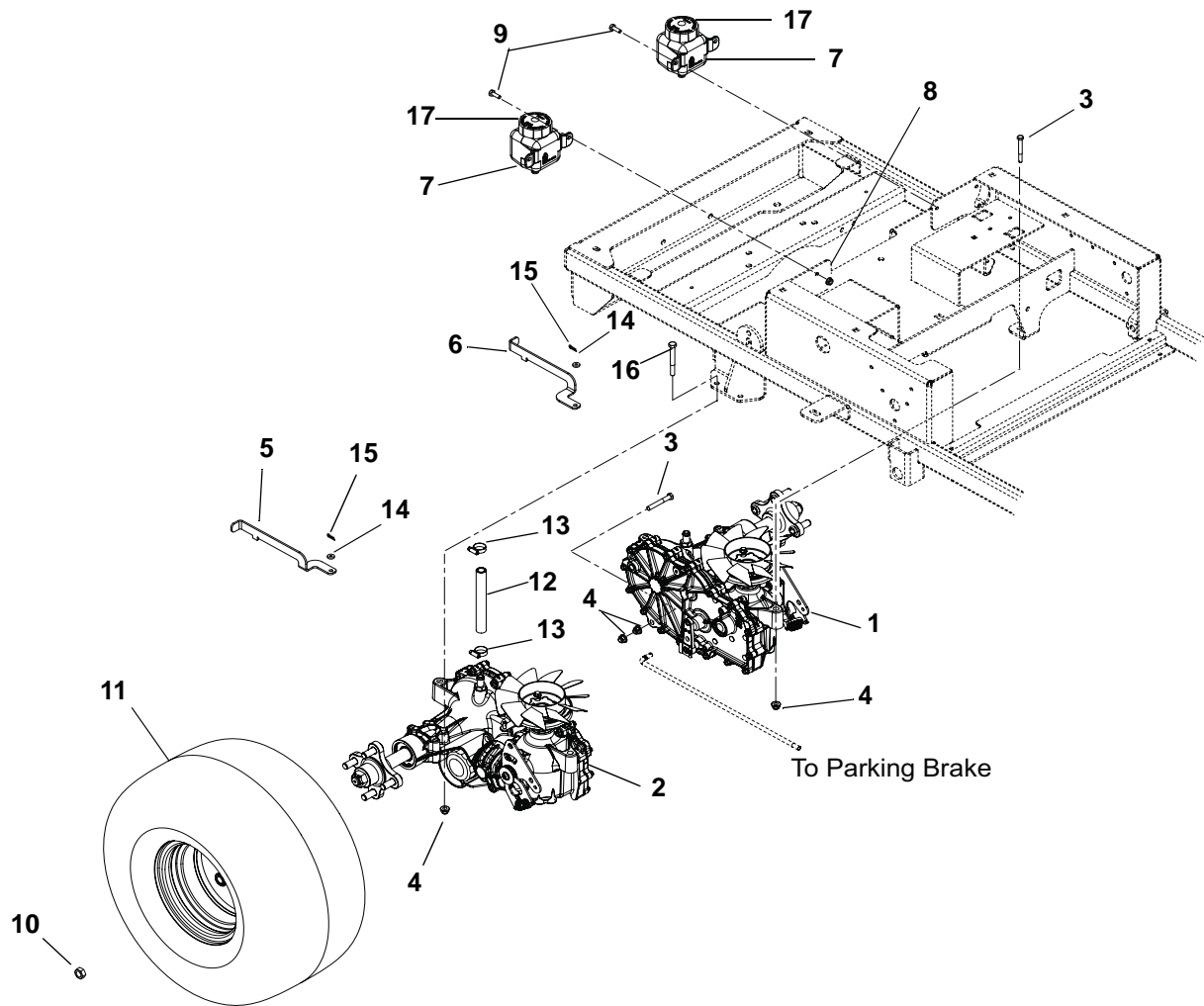


Item	Part No.	Qty.	Description
1	03829400	1	Seat with Arm
2	71600500	1	Arm Rest Kit
3	03836051	1	Seat Plate
4	05948700	2	Bolt, Hex .38-16 x 1.00 Grade 5
5	05500435	2	Bushing, Flange .385 x .500 x .875 x .406
6	06441100	2	Washer, Flat Steel .52 x .827 x .062
7	06545500	2	Nut, .38-16 Nyloc Flange
8	00337700	2	Hub Cap
9	08300021	2	Spring, Seat
10	06212100	2	Bolt, Round Head Square Neck .31-18 x 1.50 Grade 5
11	06439100	2	Washer, Flat Steel .328 x .87 x .179
12	06500015	2	Nut, Coupling 5/16-18 x 1 .75
13	06545400	4	Nut, 5/16-18 Flange Nyloc



# TRANSAXLE, DUMP VALVES AND REAR WHEELS

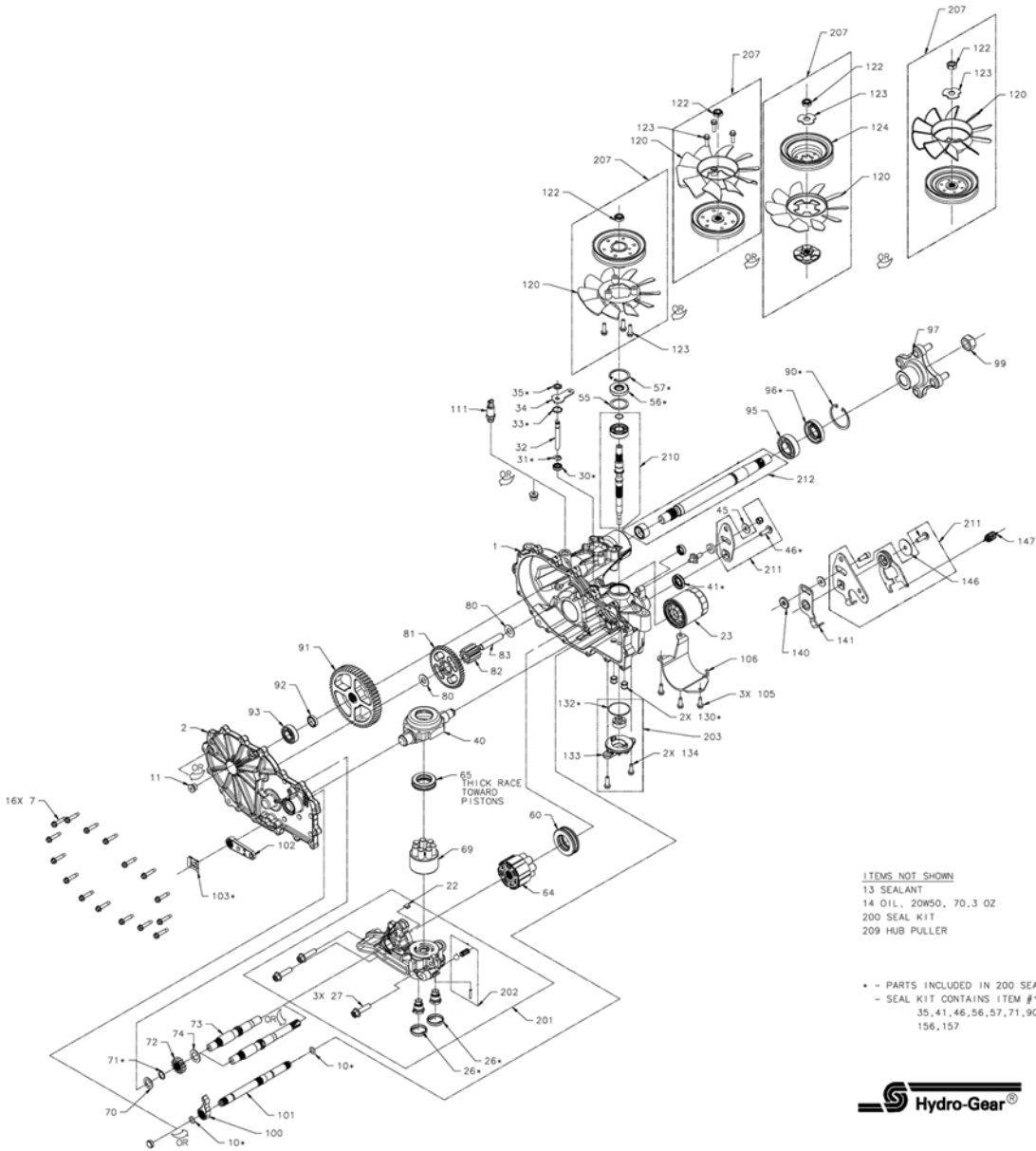
Models 915160, 162, 164



Item	Part No.	Qty.	Description
1	03265700	1	Transaxle, ZT2800 Left Hand
2	03265800	1	Transaxle, ZT2800 Right Hand
3	05963700	6	Bolt, Hex .31-18 x 2.25 Grade 5
4	06545400	12	Nut 5/16-18 Flange Nyloc
5	02996351	1	Dump Valve, Right Hand
6	02992151	1	Dump Valve, Left Hand
7	02970200	2	Tank, Expansion ZT2800
8	06543500	4	Nut, Locking Top Flange .25-20
9	05946800	4	Bolt, Hex .25-20 x .75 Grade 5
10	06517600	8	Nut, Wheel .50-20 13/16
11	07100513	2	Tire/Wheel Assembly, 20 x 10.0-8 Center
	07100737	2	Tire/Wheel Assembly, 20 x 8.0-8
12	07500039	2	Hose, Oil Reservoir
13	06923500	4	Clamp, .88 Diameter Hose
14	06439500	2	Washer, Flat Steel .265 x .50 x .087
15	06701900	2	Pin, Hair Internal .06 x .18 x .77
16	05960600	4	Bolt, Hex .31-18 x 2.75
17	21544042	2	Cap, Hydro Reservoir Replacement

# TRANSAXLE – LEFT HAND

Models 915160, 162, 164



If a part number is not listed next to a Hydro-Gear number, source the part from your local Hydro-Gear parts distributor.

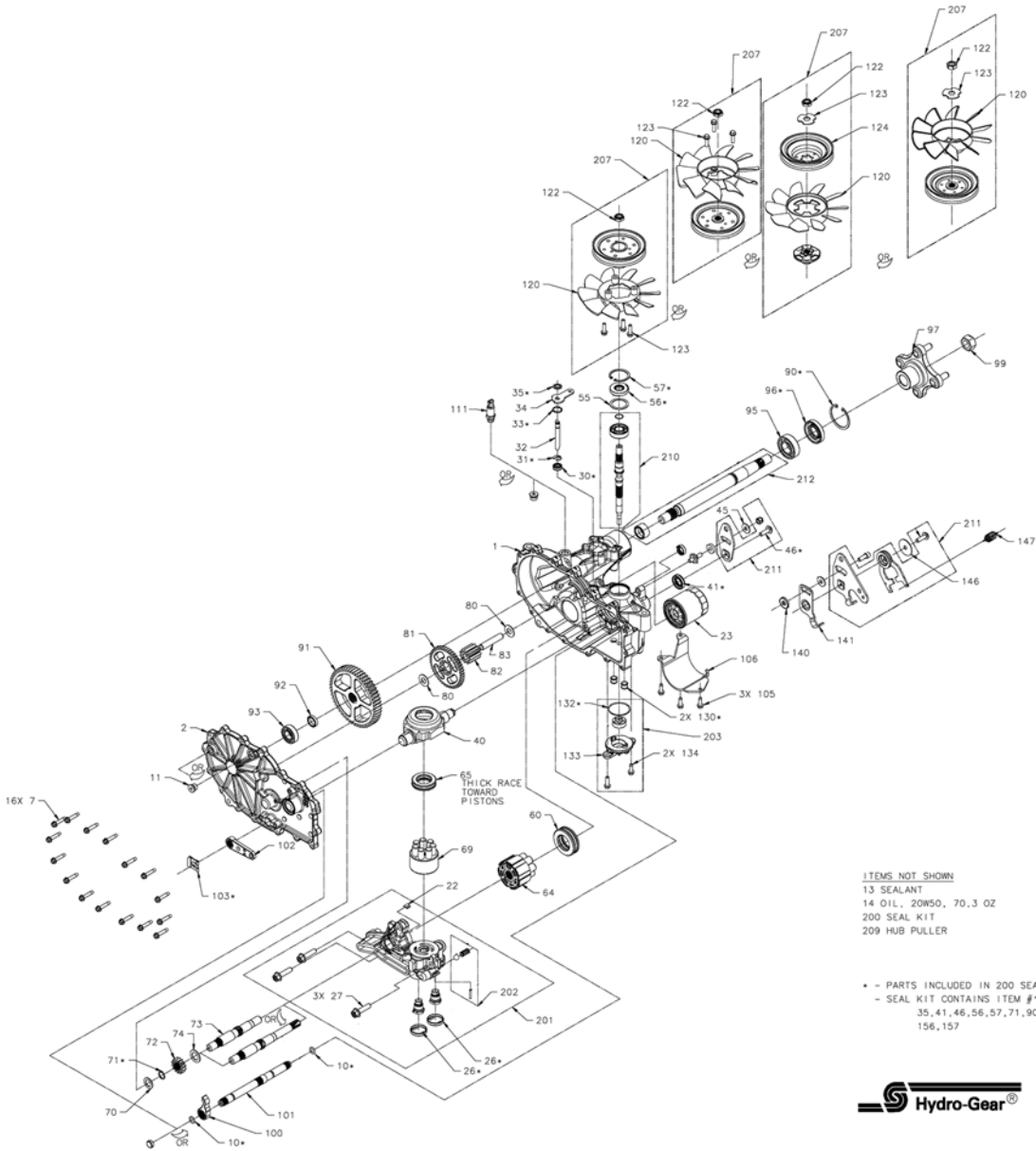
# TRANSAXLE – LEFT HAND

## Models 915160, 162, 164

Item	p/n	Hydro-Gear p/n	Qty.	Description
1		71421	1	KIT, HOUSING, MAIN, LH, CHRGR, CNTL
2		71574	1	KIT, COVER, SIDE, LH
7		53246	16	HFHCS 1/4-20 x 1.125"
10		51804	2	O-RING - 111 .103 x .424
11	08613700	9005110-5600	1	PLUG 9/16-18 (METAL)
13	21543771	50928	1	SEALANT
14			70.3oz	OIL, 20W50
22	21543839	51448	1	PLATE, BYPASS
23	21544900	52114	1	FILTER, OIL
26		52162	2	SEAL, PLUG 1.250 x .250
27		52137	3	HFHCS 3/8-16 x 1.5 (PATCH)
30	21543845	51626	1	SEAL, LIP .375 x .75 x .25
31	08622500	51628	1	RING, RET .375 EXTRNL
32		52136	1	ROD, BYPASS
33	21543846	51627	1	RING, RET .750 INTRNL
34		52370	1	ARM, BYPASS
35	21543848	51630	1	RING, RTNG .375 EXT
40	21543783	51048	1	TRUNNION, SWASHPLATE
41	21543809	51140	1	SEAL, LIP 12 x 32 x 7
45	08611200	44130	1	WASHER .34 x .88 x .06
46	21543854	51812	1	TWHCS 5/16-24 x 1.00 (PATCH)
55	21543773	50951	1	WASHER 1.23 x 1.56 x .04
56	21543816	51161	1	SEAL, LIP 17 x 40 x 7
57	21543741	50329	1	RING, RETAINING
60		51462	1	BEARING, THRUST
64		71579	1	ASS'Y, CYLINDER BLOCK, 16cc
65	08609100	50551	1	BRG, THRUST BALL 30 x 52 x 13
69	21543921	70723	1	ASS'Y, BLOCK 7 PISTON
70	21543708	44371	1	WASHER .63 x 1.0 x .05
71	21543704	44145	1	RING, RETAINING .625
72		52149	1	GEAR, 16T
73		52150	1	SHAFT, MOTOR
74	21543788	51069	1	WASHER .72 x 1.16 x .04
80	21543724	50132	2	WASHER .5 x 1.0 x .03
81		52148	1	GEAR, 43T
82		52583	1	GEAR, 11T
83		51083	1	JACK SHAFT (PIN)
90	08616500	50859	1	RING, RET 2.06 INT
91		52108	1	GEAR, 54T
92		53336	1	SPACER, .75 x 1.32 x .257
93		44121	1	BEARING, BALL, .75 x 40 x 12
95	08614000	50771	1	BRG, BALL 1.0 x 52 x 15 OPEN 6205M
96	08614300	50772	1	SEAL, LIP 25 x 52 x 10 TC (GRAY)
97		71446	1	KIT, HUB, 4 BOLT
99	08621100	50863	1	NUT, HEX LOCK 3/4-16
100		52776	1	PAWL, BRAKE
101		52651	1	SHAFT, BRAKE
102	02996500	52639	1	HANDLE, ACTUATING
103	21544007	52027	1	CLIP, RETAINING
105	21543759	50752	3	HFHCS 1/4-20 x .75
106		52247	1	GUARD, FILTER, LH
111		71393	1	FITTING, STR 9/16-18 SAE .5 BARB
120	21544011	52576	1	FAN 7", 10 BLADE
122	21543703	44133	1	NUT, HEX JAM 1/2-20 W/PATCH
123	21543791	51076	3	HFHCS 1/4-20 x .875
130		52157	2	TUBE, CONNECTING
131	08611500	50273	1	GEROTOR ASSEMBLY (1.9 cc/rev)
132	21544005	52250	1	O-RING, -137, 0.103 x 2.050
133		52688	1	COVER, CHARGE PUMP
134	21543759	50752	2	HFHCS 1/4-20 x .75
140		52527	1	SPACER .320 x 1.005 x .179
141	21543866	51946	1	ARM, NEUTRAL LEFT
142	21543843	51616	1	SHCS 5/16-24 x 1 PATCH
146	21543871	51950	1	WASHER, .343 x 1.500 x .062
147	21544001	51833	1	SPRING, EXTNSN RTN-34-LBS
200	21543999	71410	1	KIT, SEAL
201		71563	1	KIT, CENTER SECTION, LH, CHRGR
202		71436	1	KIT, CHARGE RELIEF
203		71411	1	KIT, CHARGE PUMP
207		71833	1	KIT, FAN & PULLEY
209	21544009	71459	1	HUB PULLER, 4 BOLT
210	21544010	71442	1	KIT, INPUT SHAFT
211		71593	1	KIT, RTN, CCW
212		71570	1	KIT, SHAFT, AXLE

# TRANSAXLE – RIGHT HAND

Models 915160, 162, 164



If a part number is not listed next to a Hydro-Gear number, source the part from your local Hydro-Gear parts distributor.

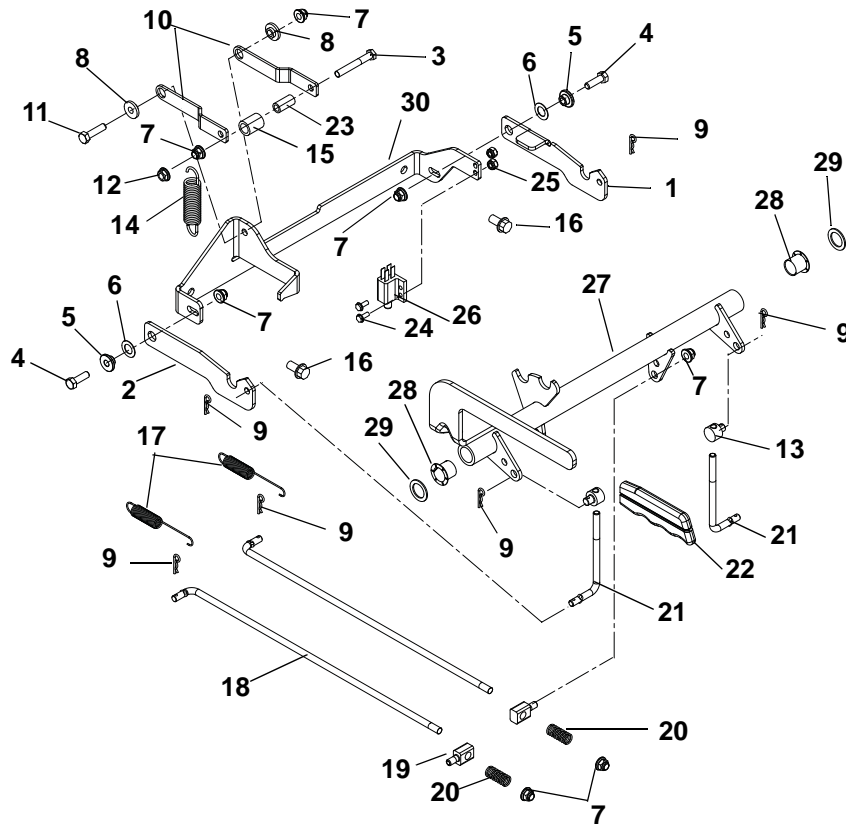
# TRANSAXLE – RIGHT HAND

## Models 915160, 162, 164

Item	p/n	Hydro-Gear p/n	Qty.	Description
1		71413	1	KIT, HOUSING, MAIN, RH, CHRГ, CNTL
2		71572	1	KIT, COVER, SIDE, RH
7		53246	16	HFHCS 1/4-20 x 1.125"
10		51804	2	O-RING - 111 .103 x .424
11	08613700	9005110-5600	1	PLUG 9/16-18 (METAL)
13	21543771	50928	1	SEALANT
14			70.3oz	OIL, 20W50
22	21543839	51448	1	PLATE, BYPASS
23	21544900	52114	1	FILTER, OIL
26		52162	2	SEAL, PLUG 1.250 x .250
27		52137	3	HFHCS 3/8-16 x 1.5 (PATCH)
30	21543845	51626	1	SEAL, LIP .375 x .75 x .25
31	08622500	51628	1	RING, RET .375 EXTRNL
32		52136	1	ROD, BYPASS
33	21543846	51627	1	RING, RET .750 INTRNL
34		51910	1	ARM, BYPASS
35	21543848	51630	1	RING, RTNG .375 EXT
40	21543783	51048	1	TRUNNION, SWASHPLATE
41	21543809	51140	1	SEAL, LIP 12 x 32 x 7
45	08611200	44130	1	WASHER .34 x .88 x .06
46	21543854	51812	1	TWHCS 5/16-24 x 1.00 (PATCH)
55	21543773	50951	1	WASHER 1.23 x 1.56 x .04
56	21543816	51161	1	SEAL, LIP 17 x 40 x 7
57	21543741	50329	1	RING, RETAINING
60		51462	1	BEARING, THRUST
64		71579	1	ASS'Y, CYLINDER BLOCK, 16cc
65	08609100	50551	1	BRG, THRUST BALL 30 x 52 x 13
69	21543921	70723	1	ASS'Y, BLOCK 7 PISTON
70	21543708	44371	1	WASHER .63 x 1.0 x .05
71	21543704	44145	1	RING, RETAINING .625
72		52149	1	GEAR, 16T
73		52150	1	SHAFT, MOTOR
74	21543788	51069	1	WASHER .72 x 1.16 x .04
80	21543724	50132	2	WASHER .5 x 1.0 x .03
81		52148	1	GEAR, 43T
82		52583	1	GEAR, 11T
83	21543793	51083	1	JACK SHAFT (PIN)
90	08616500	50859	1	RING, RET 2.06 INT
91		52108	1	GEAR, 54T
92		53336	1	SPACER, .75 x 1.32 x .257
93		44121	1	BEARING, BALL, .75 x 40 x 12
95	08614000	50771	1	BRG, BALL 1.0 x 52 x 15 OPEN 6205M
96	08614300	50772	1	SEAL, LIP 25 x 52 x 10 TC (GRAY)
97		71446	1	KIT, HUB, 4 BOLT
99	08621100	50863	1	NUT, HEX LOCK 3/4-16
100		52776	1	PAWL, BRAKE
101		52651	1	SHAFT, BRAKE
102	02996500	52639	1	HANDLE, ACTUATING
103	21544007	52027	1	CLIP, RETAINING
105	21543759	50752	3	HFHCS 1/4-20 x .75
106		52257	1	GUARD, FILTER, RH
111		71393	1	FITTING, STR 9/16-18 SAE .5 BARB
120	21544011	52576	1	FAN 7", 10 BLADE
122	21543703	44133	1	NUT, HEX JAM 1/2-20 W/PATCH
123	21543791	51076	3	HFHCS 1/4-20 x .875
130		52157	2	TUBE, CONNECTING
131	08611500	50273	1	GEROTOR ASSEMBLY (1.9 cc/rev)
132	21544005	52250	1	O-RING, -137, 0.103 x 2.050
133		52688	1	COVER, CHARGE PUMP
134	21543759	50752	2	HFHCS 1/4-20 x .75
140		52527	1	SPACER .320 x 1.005 x .179
141		51945	1	ARM, NEUTRAL RIGHT
142	21543843	51616	1	SHCS 5/16-24 x 1 PATCH
146	21543871	51950	1	WASHER, .343 x 1.500 x .062
147	21544001	51833	1	SPRING, EXTNSN RTN-34LBS
200	21543999	71410	1	KIT, SEAL
201		71561	1	KIT, CENTER SECTION, RH, CHRГ
202		71436	1	KIT, CHARGE RELIEF
203		71411	1	KIT, CHARGE PUMP
207		71833	1	KIT, FAN & PULLEY
209	21544009	71459	1	HUB PULLER, 4 BOLT
210	21544010	71442	1	KIT, INPUT SHAFT
211		71590	1	KIT, RTN, CW
212		71570	1	KIT, SHAFT, AXLE

# PARKING BRAKE

Models 915160, 162, 164



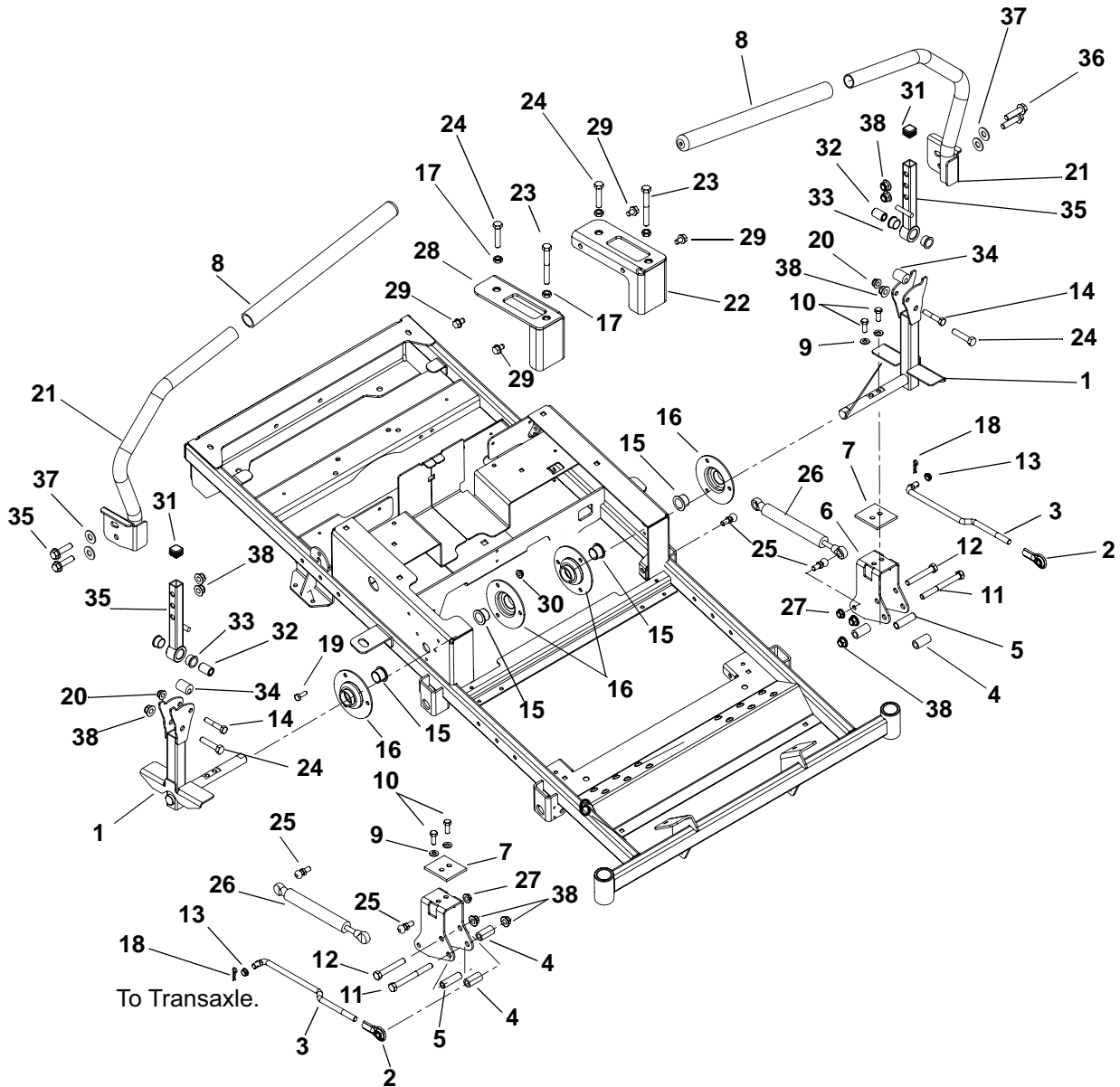
Item	Part No.	Qty.	Description
1	00952100	1	Link, Brake Interlock
2	00952000	1	Interlock, Brake
3	05963700	1	Bolt, Hex .31-18 x 2.25 Grade 5
4	05946900	2	Bolt, Hex .31-18 x 1.00 Grade 5
5	05514800	2	Bushing, Flange .312 x .500 x .344 x .880
6	06436000	2	Washer, Flat Steel .505 x .875 x .024
7	06545400	8	Nut, Flange Nyloc 5/16-18
8	01305900	2	Shoulder Spacer
9	06713500	6	Pin, Hair Internal .08 x .18 x 1.18
10	00952200	2	Arm, Brake Cam
11	05947500	1	Bolt, Hex .31-18 x 1.25 Grade 5
12	06543100	1	Nut, Locking Top Flange .31-18
13	01596400	2	Trunnion, Brake
14	08311700	1	Spring, Tension .105 x .812 x 3.88
15	02973100	1	Roller, Cam Lock
16	07415400	2	Screw, Tapping .38-16 x .75 Hex Washer Head
17	08300017	2	Spring, Tension .056 x .60 x 4.40
18	01959400	2	Rod, Park Brake
19	09267300	2	Pin, Pivot
20	08300028	2	Spring, Compression
21	01921600	2	Link, Interlock Brake
22	03826900	1	Grip, Park Brake
23	00364900	1	Bushing
24	06116900	2	Screw, Machine 10-24 x .75 Hex Washer Head
25	06536000	2	Nut, Locking Nylon 10-24 with Insert
26	03606600	1	Switch, Double Pole
27	00826451	1	Weldment, Brake Shaft
28	05500822	2	Bushing, IGLIDE Clip
29	06441400	2	Washer, Flat Steel .754 x 1.125 x .062
30	01959351	1	Bracket, Brake Mounting

# NOTES

---

# STEERING CONTROLS

Models 915160, 162, 164





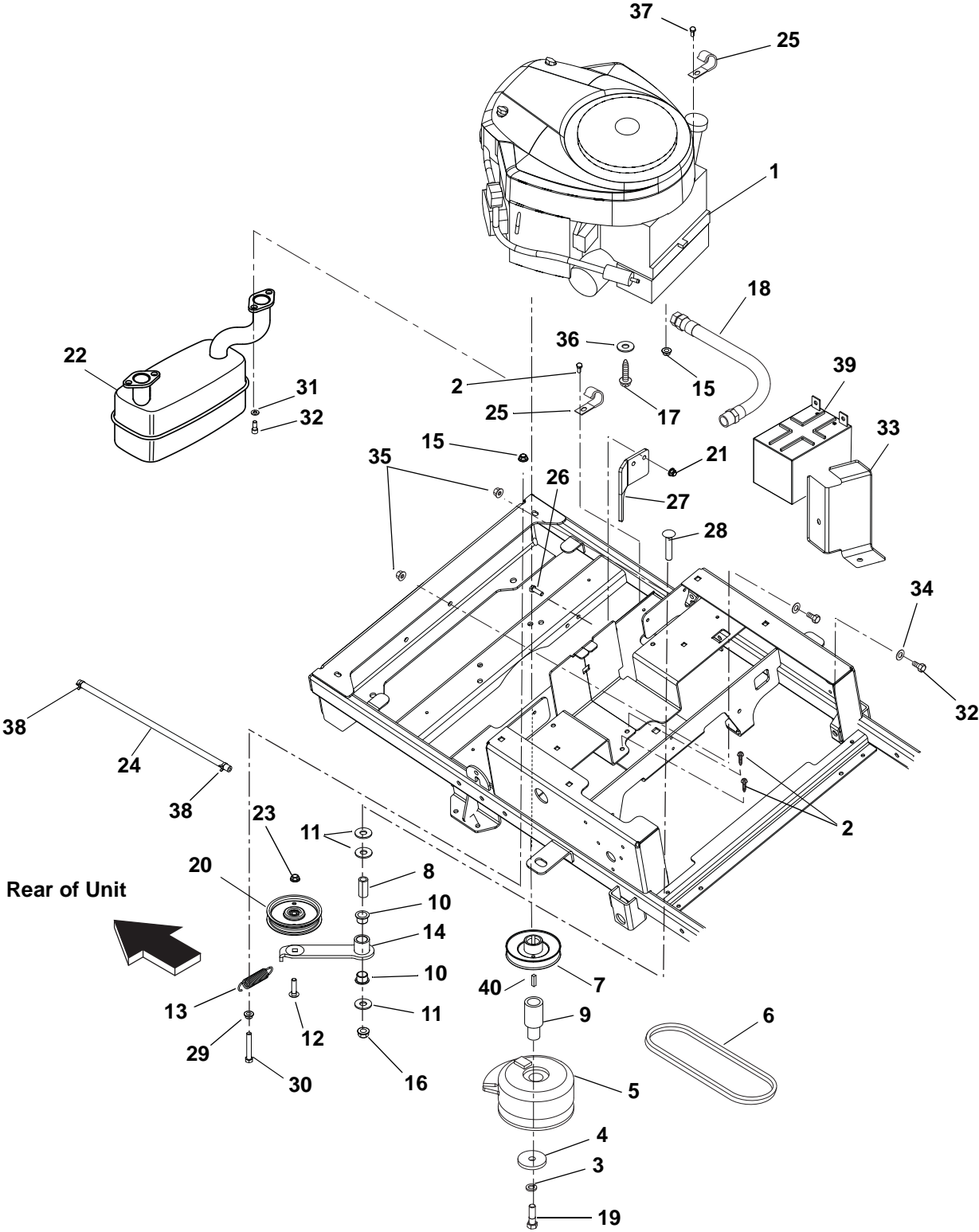
# STEERING CONTROLS

## Models 915160, 162, 164

Item	Part No.	Qty.	Description
1	04220100	2	Weldment, Control Arm
2	03563100	2	Rod End, .38 Right Hand
3	02956000	2	Link, Transmission
4	00363800	4	Bushing, Spacer .390 x .625 x 1.25 Promaster
5	03266400	2	Spacer, Steering
6	00952300	2	Bracket, Steering
7	03262051	2	Plate, Steering Reinforcing
8	04257400	2	Grip, Handlebar 15" Foam
9	06308600	4	Washer, Locking .31 x .078
10	05901311	4	Bolt, Hex .31-18 x 1.00 Grade 8
11	05959500	2	Bolt, Hex .38-16 x 3.75 Grade 5
12	05958400	2	Bolt, Hex .38-16 x 2.50 Grade 5
13	05500020	2	Bushing, Polyliner 322-C
14	05957400	2	Bolt, Hex .31-18 x 1.75 Grade 5
15	05503900	4	Bushing, Flange .750 x 1.000 x .625 x 1.250
16	03207600	4	Bearing Flange
17	06535900	4	Nut, Hex Jam .375-16
18	06713500	2	Pin, Hair Internal .08 x .18 x 1.18
19	05946800	6	Bolt, Hex .25-20 x .75 Grade 5
20	06545400	8	Nut, .31-18 Nyloc Flange
21	04219451	1	Weldment, Steering Handle Right Hand
	04219551	1	Weldment, Steering Handle Left Hand
22	02981451	1	Bracket, Left Hand Speed Control
23	05958300	2	Bolt, Hex .38-16 x 3.00 Grade 5
24	05974000	4	Bolt, Hex .375-16 x 1.750 Full Thread
25	03652200	4	Stud, Ball
26	03914200	2	Damper, Control
27	06543100	4	Nut, Locking Top Flange .31-18
28	02981351	1	Bracket, Right Hand Speed Control
29	07411500	4	Screw, Tapping .31-18 x .50 Hex Washer Head
30	06543500	6	Nut, Locking Top Flange .25-20
31	07500131	2	Cap Plug, Square .75-14-20 Ribbed
32	04193500	2	Spacer, .375 x .625 x .970 (PM)
33	05501017	4	Bushing, Flange, .625 x .750 x .450 x .875
34	05500932	2	Bushing, Eccentric .31 x .75 x .97
35	04192951	2	Weldment, Upper Control Arm
36	07050000	4	Bolt, Serrated Hex Flange Washer Head .375-16 x 1.25
37	06436200	4	Washer, Flat Steel .406 x .812 x .065
38	06537200	4	Nut, Locking Center Jam .375-16

# ENGINE, EXHAUST, BELTS AND IDLERS

Models 915160, 162, 164



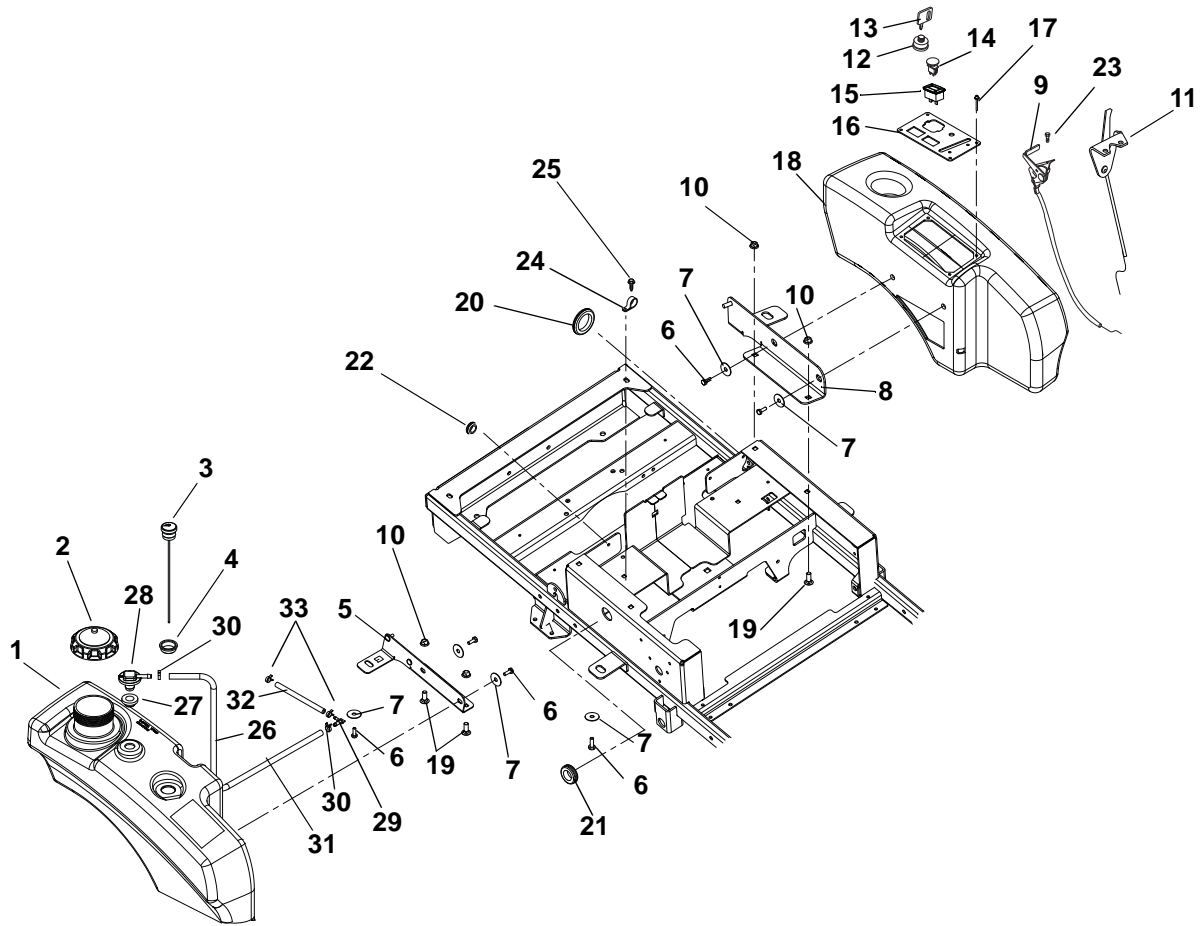
# ENGINE, EXHAUST, BELTS AND IDLERS

## Models 915160, 162, 164

Item	Part No.	Qty.	Description
1	08200631	1	Engine, Kawasaki FR651V (915160)
	0820717	1	Engine, Kawasaki FR691V (915162, 164)
2	07411600	3	Screw, Tapping .250-20 x .37 Hex Washer Head
3	06309300	1	Washer, Locking .44 x .109 Regular
4	06443600	1	Washer, Flat Steel .469 x 2.00 x .25
5	04678300	1	Clutch, XL
6	07242200	1	Belt, HA 62.50 Wrapped
7	07336500	1	Pulley, V 4.5 x 1.00 AB Section with Key
8	05516400	1	Bushing, Sleeve .500 x .750 x 1.560
9	02996000	1	External, Crankshaft Lower
10	05500039	2	Bushing, Flange 0.75 x 0.875 x .625 x 1.125
11	06442000	3	Washer, Flat Steel .563 x 1.38 x .109
12	06224200	1	Bolt, Round Head Square Neck .38-16 x 1.50 Grade 5
13	08311700	1	Spring, Tension .105 x .812 x 3.88
14	02003800	1	Weldment, Ground Drive Idler Arm
15	06545500	2	Nut, 3/8-16 Flange Nyloc
16	06543600	1	Nut, Locking Top Flange .50-13
17	05900125	4	Bolt, Hex .38-16 x 1.25
18	03844200	1	Hose Assembly, Oil Drain
19	05966700	1	Bolt, Hex .44-20 x 4.50 Grade 8
20	07300101	1	Assembly, 4" Idler
21	06545400	3	Nut, .31-18 Nyloc Flange
22	03946900	1	Muffler, Kawasaki Twin Courage
23	06542000	1	Nut, Locking Top Flange .38-16
24	03278100	38"	Fuel Hose
25	06916000	2	J-Clamp
26	05946900	2	Bolt, Hex .31-18 x 1.00 Grade 5
27	03260051	1	Clutch Stop
28	06225500	1	Bolt, Round Head Square Neck .50-13 x 2.50 Grade 5
29	06534900	1	Nut, Flange .375-16
30	05958400	1	Bolt, Hex .38-16 x 2.50 Grade 5
31	06308600	4	Washer, Locking .31 x .078 Regular
32	05946800	2	Bolt, Hex .25-20 x .75
33	04593051	1	Bracket, Battery Holder
34	06437300	2	Washer, Flat Steel .281 x .62 x .065
35	06509200	2	Nut, KEPS .250-20
36	06436200	4	Washer, Flat Steel .406 x .812 x .065
37	05959400	1	Bolt, Hex .38-16 x .75 Grade 5
38	03278800	2	Clamp, Fuel Line
39	04591900	1	Battery, 12V, 215 CCA, GEP
40	06602100	1	Key, Straight .25 x 2.0 x .25

# FUEL TANK

Models 915160, 162, 164



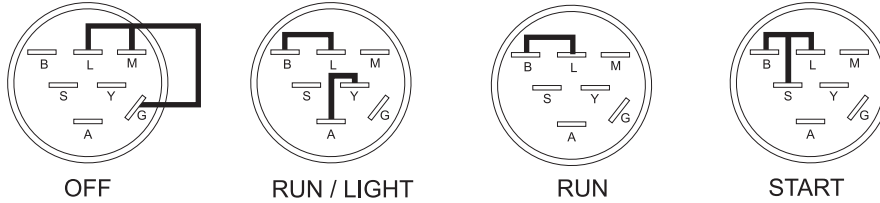
Item	Part No.	Qty.	Description
1	04429900	1	Tank, XL Non-Permeable Fuel
2	04558000	1	Cap, Fuel Vent-in Autolock
3	07500029	1	Gauge, Remote Fuel 10.0"
4	07500034	1	Grommet, Fuel Gauge
5	04718053	1	Weldment, RH Tank Mount
6	07049500	6	Bolt, Serrated Hex Flange Washer Head .312-18 x .50
7	06446900	6	Washer, Flat Steel .347 x 1.254 x .048
8	04718153	1	Weldment, LH Fender Mount
9	06900423	1	Cable, Throttle
10	06545500	4	Nut, .38-16 Nyloc Flange
11	06900424	1	Cable, Choke
12	01588300	1	Key Switch
13	02460700	1	Key, w/Cap
14	01545600	1	Switch, Clutch
15	03966800	1	Hour Meter, Digital
16	03887051	1	Panel, Control
17	07400106	4	Screw, Hex .25 x 14-.75
18	02967400	1	Fender, XL
19	06223600	4	Bolt, Round Head Square Neck .38-16 x 1.00 Grade 5
20	07500017	1	Grommet, 2.00"
21	07506500	1	Grommet .125 x 1.000 ID
22	07500031	1	Grommet, Rubber 5/8 ID/1.13 OD
23	07415800	4	Screw, Tapping 10-24 x .50 Hex Washer Head Thread
24	06900036	1	Clamp, Cushioned Steel
25	07412900	1	Screw, Tap Hex Washer Head .38-16 x .5
26	04280700	1	Tube, Fuel Pick-up (XL)
27	04082700	1	Grommet, Remote Vent, Nitrile
28	04246000	1	Vent, Roll-over (.25" ID hose)
29	04097000	1	Fitting, 3/16 x 1/4 90 Degree VAC
30	03278800	2	Clamp, Fuel Line
31	03278100	25 in.	Hose, .25 Low-Perm Bulk Gas
32	03375900	34 in.	Hose, .188 Low-Perm Bulk Gas
33	04097700	2	Clamp, Hose, Spring .188

# CONTINUITY DIAGRAM

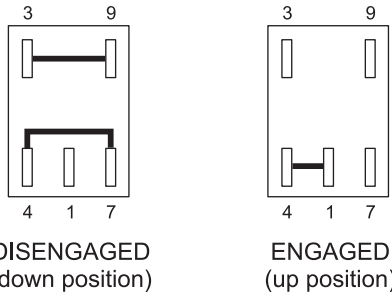
**Models 915160, 162, 164**

The diagrams below show the various states of connection for electrical components.  
The solid lines on switches show continuity.  
NOTE: All switches are viewed from the rear.

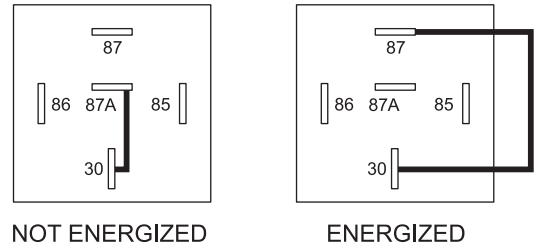
**Key Switch**  
(01588300)



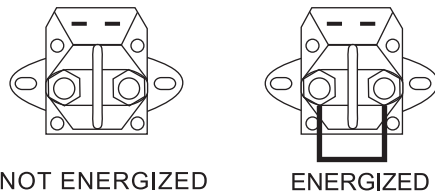
**PTO Switch**  
(01545600)



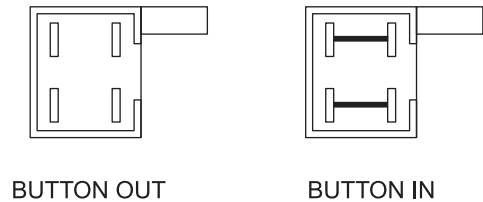
**Relay**  
(03042800)



**Solenoid**  
(00696900)

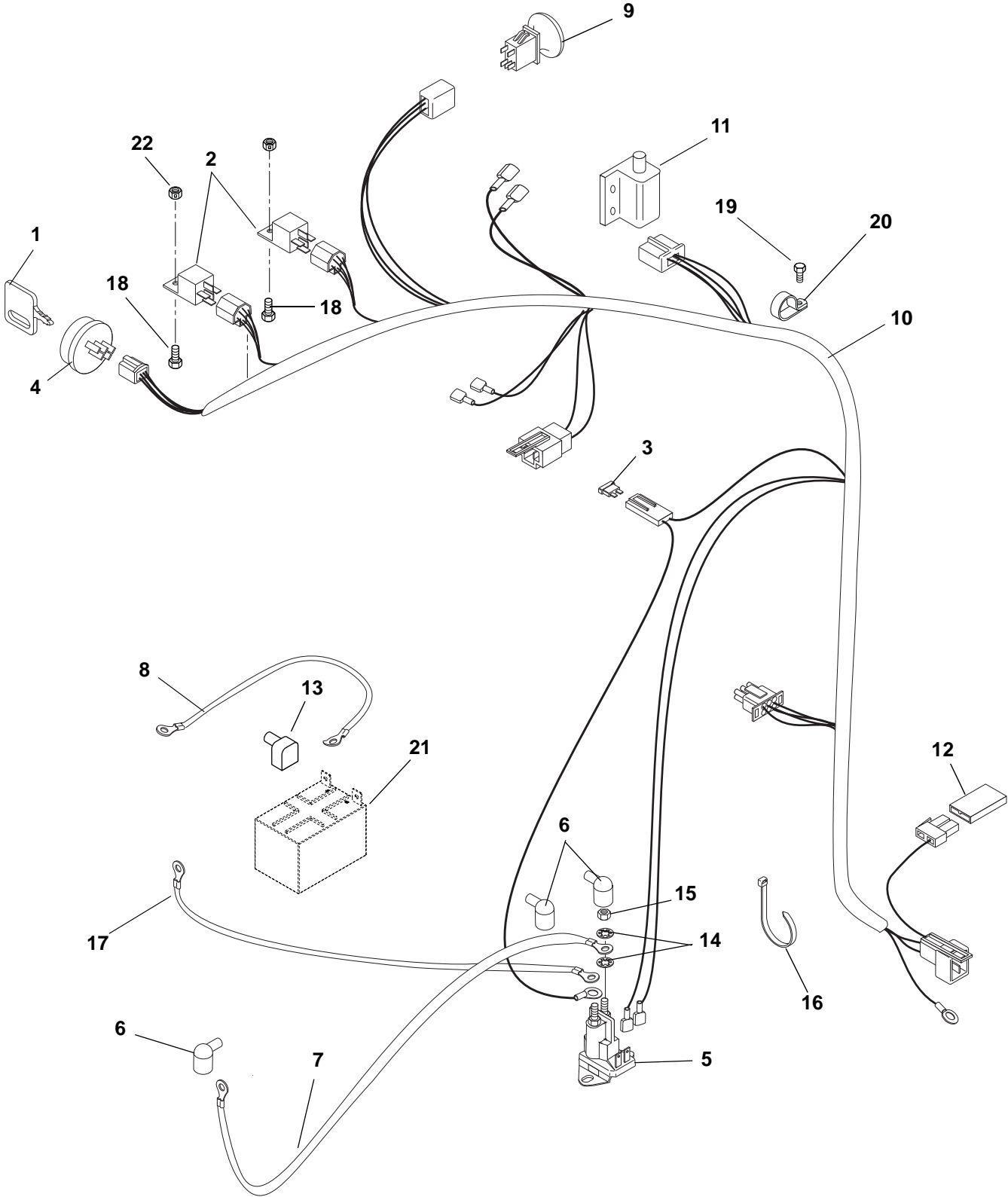


**Park Brake Switch**  
(03606600)



# ELECTRICAL SYSTEM

Models 915160, 162, 164



# ELECTRICAL SYSTEM

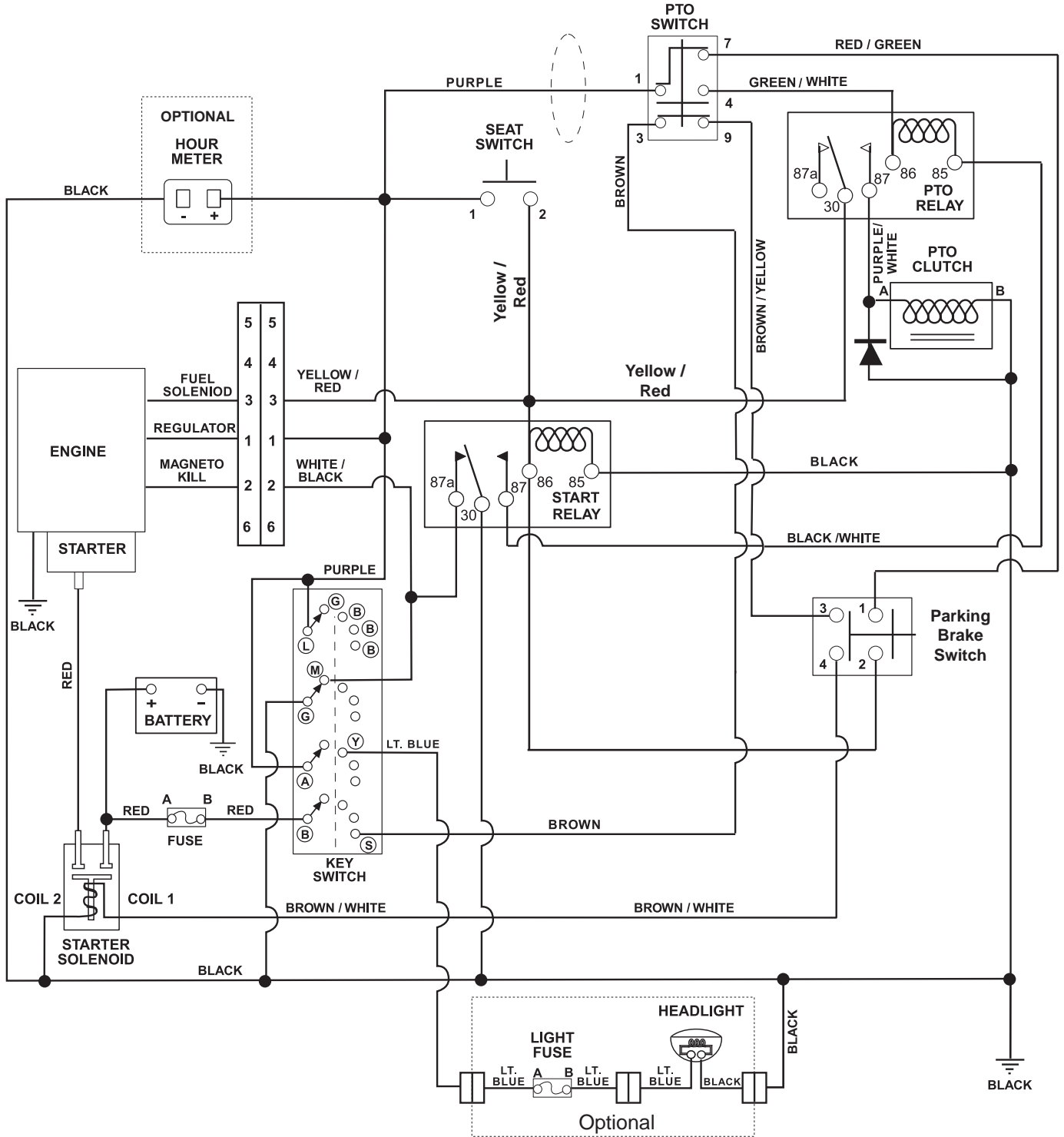
---

## Models 915160, 162, 164

Item	Part No.	Qty.	Description
1	02460700	1	Key with Cap
2	03042800	2	Relay
3	09351100	1	Fuse, 30 AMP
4	01588300	1	Key Switch
5	00696900	1	Solenoid
6	07533200	3	Boot, Eyelet Terminal
7	02974700	1	Starter Cable
8	03287100	1	Cable, Ground .25 x 13.00 x .31
9	01545600	1	Switch, Clutch With Retainer
10	04045900	1	Harness
11	03606600	1	Switch, Double Pole N.O. / N.O.
12	09293500	1	Diode, Connector Shell
13	07505700	1	Insulator
14	06310500	4	Washer, Locking .31
15	06536700	2	Nut, Jam .31-24
16	07517300	2	Cable Tie
17	02974800	1	Starter Cable
18	06116900	2	Screw, Hex Washer Head Machine 10-24 x .75
19	07412900	1	Screw, Tapping Hex Washer Head Thread Rolling .38-16 x .50
20	06900036	1	Clamp, Cushioned Steel .75
21	04591900	1	Battery, 215 CCA GEP
22	06536000	2	Nut, Nylon Locking 10-24

# WIRING DIAGRAM

Models 915160, 162, 164



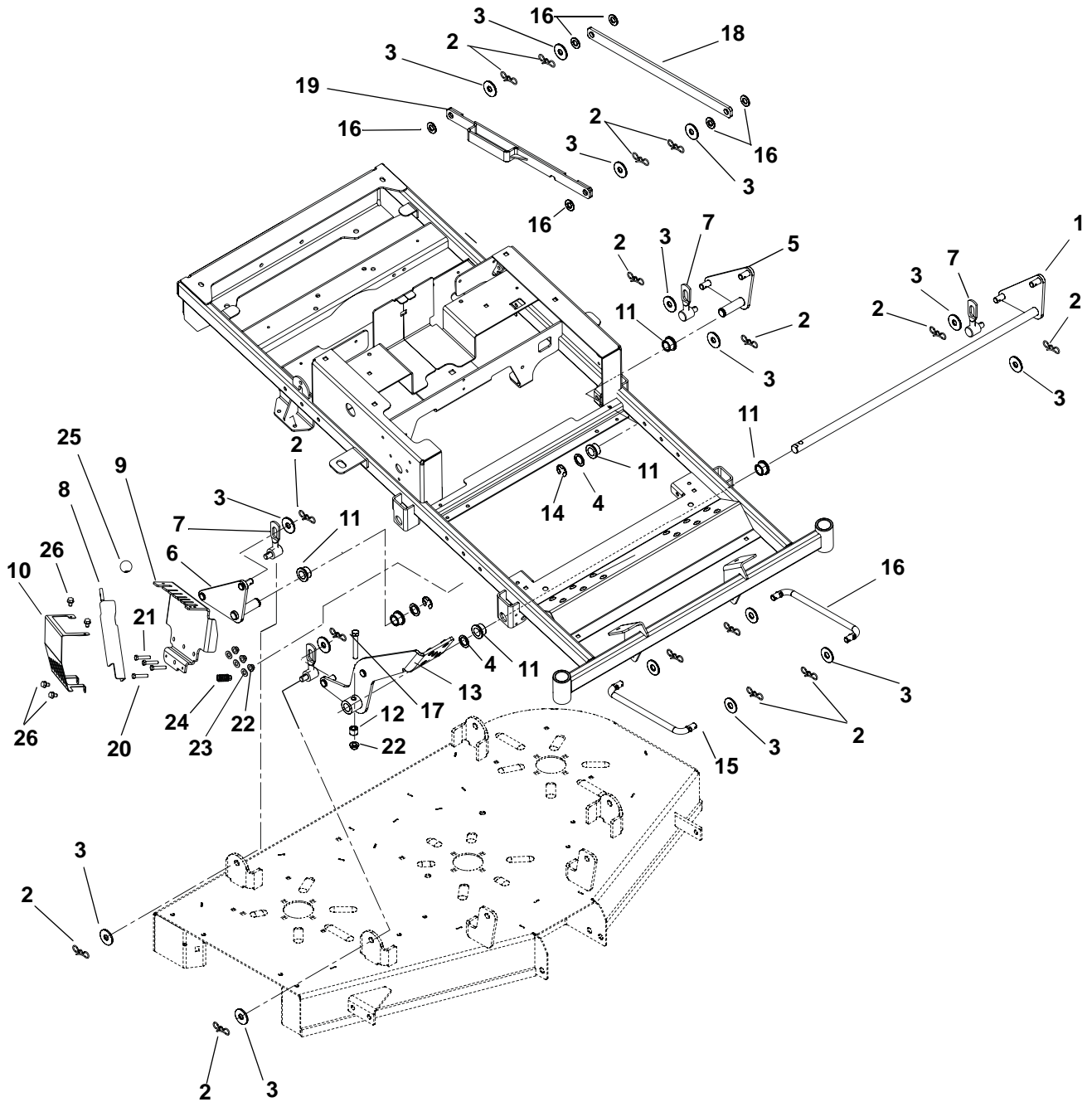


# NOTES

---

# MOWER DECK LIFT

Models 915160, 162, 164



# MOWER DECK LIFT

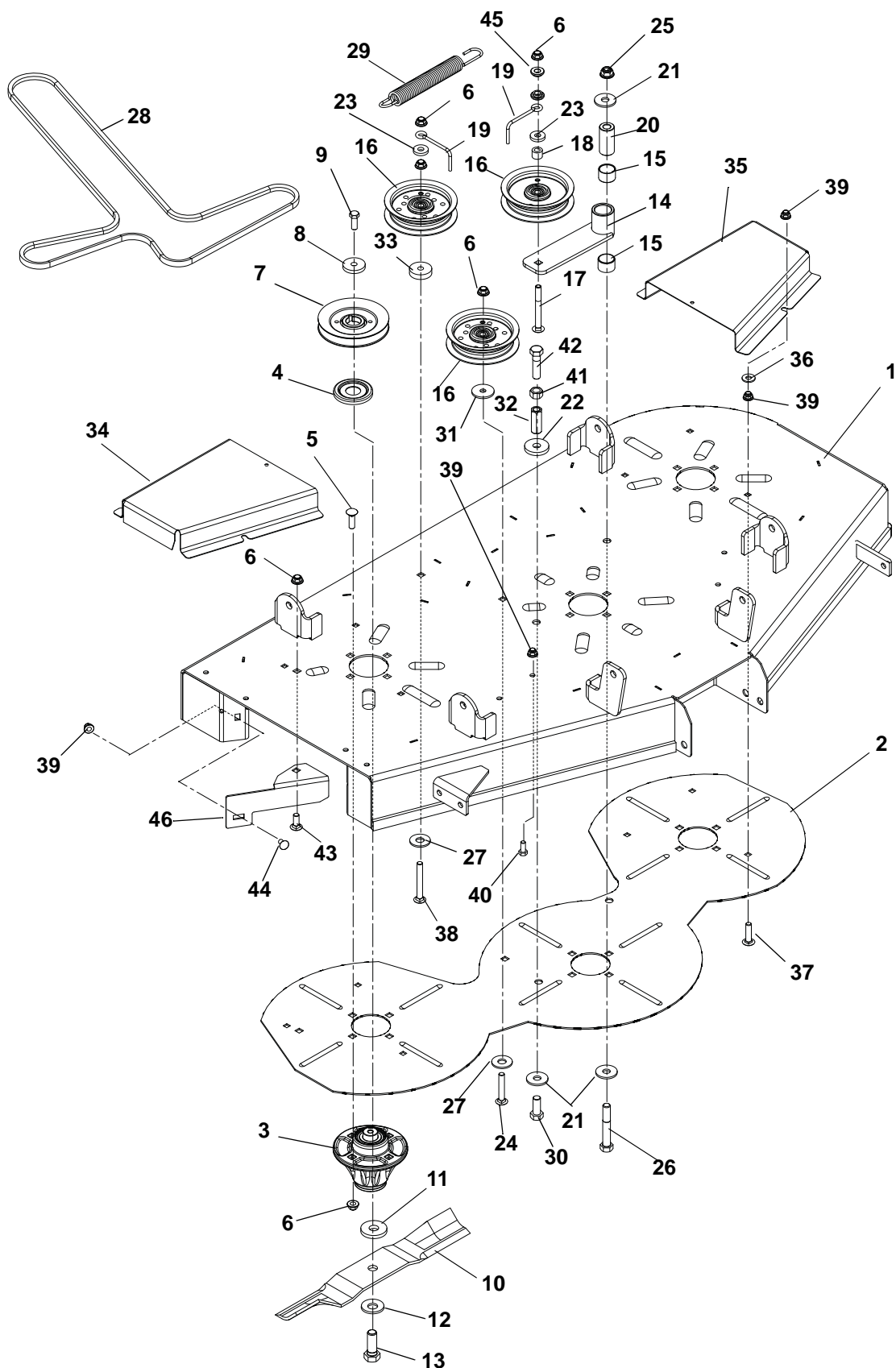
---

## Models 915160, 162, 164

Item	Part No.	Qty.	Description
1	02969200	1	Weldment, Deck Pivot
2	06700201	16	Pin, Bow Tie Locking Cotter .091 x 1.875
3	06436400	16	Washer, Flat Steel.511 x 1.441 x .125
4	06441400	4	Washer, Flat Steel .754 x 1.125 x .062
5	02969400	1	Weldment, Deck Pivot ZTXL Rear Left Hand
6	02969300	1	Weldment, Deck Pivot ZTXL Rear Right Hand
7	03272700	4	Assembly, Deck Link
8	04555567	1	Lever, Weldment
9	04650251	1	Bracket, HOC XL
10	04650351	1	Guard, Plate Styled HOC
11	05503900	6	Bushing, Flange .750 x 1.000 x .625 x 1.250
12	08553700	1	Bushing, Sleeve .391 x .688 x .52
13	02969151	1	Weldment, XL Foot Pedal
14	05707400	2	Ring, Retaining-External .750 x .050
15	02004500	2	Link, Drag
16	06443300	6	Washer, Flat Nylon .52 x 1.00 x .08
17	05958400	1	Bolt, Hex .38-16 x 2.50 Grade 5
18	02973051	1	Link, Lift
19	04567300	1	HOC, Link Retaining XL
20	05962900	1	Bolt, Hex .38-16 x 2.25
21	05958500	3	Bolt, Hex .38-16 x 1.75 Grade 5
22	06545500	5	Nut .38-16 Nyloc Flange
23	06435700	6	Washer, Flat Steel .38 x .875 x .083
24	08337500	1	Spring
25	07533500	1	Knob
26	07400034	4	Screw, Tapping Hex Washer Head Thread Rolling .25-20 x .50 YWZ

# MOWER DECK, BELT, IDLERS AND BLADES

Models 915160, 162, 164



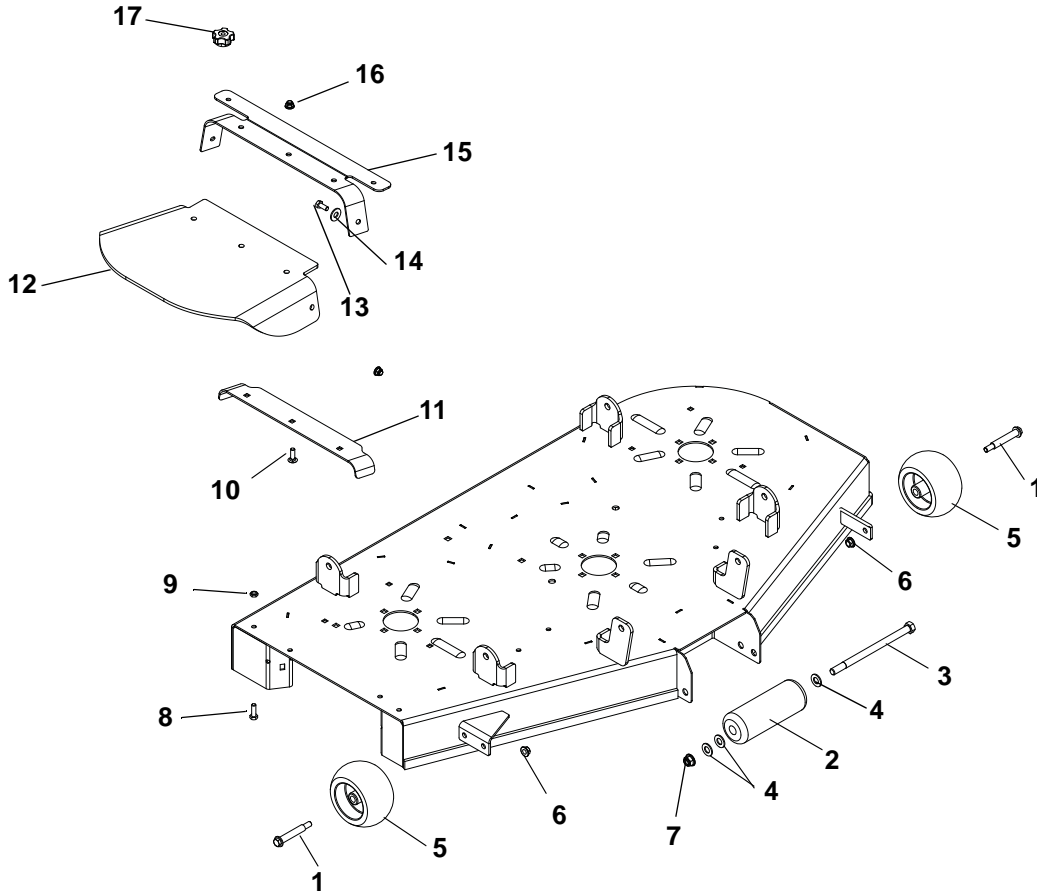
# MOWER DECK, BELT, IDLERS AND BLADES

## Models 915160, 162, 164

Item	Part No.	Qty.	Description
1	51524300	1	Deck Replacement, 42 Deck (ZT XL) (915160)
	51524400	1	Deck Replacement, 48 Deck (ZT XL) (915162)
	51524500	1	Deck Replacement, 54 Deck (ZT XL) (915164)
2	03273053	1	Doubler Plate, 42 ZT XL (915160)
	02991053	1	Plate, 48" ZT XL Deck (915162)
	02989853	1	Doubler Plate, 54" Deck (915164)
3	61543800	3	Spindle Assembly
4	00587400	3	Dust Cap
5	06224100	12	Bolt, Round Head Square Neck .38-16 x 1.25
6	06545500	17	Nut .38-16 Flange Nyloc
7	07330267	3	Sheave, Spindle 4.75 Dia.
8	06400006	3	Washer, Flat Steel .406 x 1.50 x .245
9	05900013	3	Bolt, Hex .38-16 x 1.00 EP30 Grade 8
10	02961600	3	Blade, 14.50" Mower (915160)
	02982000	3	Blade, 16.19" Mower (915162)
	02961700	3	Blade, 18.50" Mower (915164)
11	06400829	3	Washer, Flat .640 x 1.75 x .250
12	06445700	3	Washer, Beveled .63 x 1.625 x .140
13	05978900	3	Bolt, Hex .62-18 x 1.75 Grade 8
14	00652600	1	Idler Arm
15	05435800	2	Bearing, 1.00 x 1.12 x .75
16	07300039	3	Assembly, Idler 4"
17	06222400	1	Bolt, Round Head Square Neck .38-16 x 3.50 Grade 5
18	08553700	1	Bushing, Sleeve .391 x .688 x .52
19	00391900	2	Finger, Belt
20	01581700	1	Spacer, Powdered Metal
21	06436400	3	Washer, Flat Steel .511 x 1.441 x .125
22	06445000	1	Washer, Flat Steel .515 x 1.625 x .25
23	06444000	2	Washer, Flat Steel .406 x 1.00 x .188
24	06213400	1	Bolt, Round Head Square Neck .38-16 x 2.25 Grade 5
25	06500010	1	Nut, .50-13 Nyloc Flange
26	05965800	1	Bolt, Hex .50-13 x 3.50 Grade 5
27	06442000	1	Washer, Flat Steel .563 x 1.38 x .109
28	07219600	1	Belt, HA 127.12 Wrapped (915160)
	07200436	1	Belt, HA Wrapped 134" (915162)
	07200023	1	Belt, HA 145.50 Wrapped (915164)
29	08300020	1	Spring
30	05958900	1	Bolt, Hex .50-13 x 1.25 Grade 5
31	06441700	1	Washer, Flat Steel .39 x 1.5 x .125
32	06500013	1	Nut, Coupling .50-13 x 1.75
33	01594000	1	Spacer, .39 x 1.50 x .380
34	00655953	1	Belt Cover, Right (915160)
	00486953	1	Belt Cover, Right (915162)
	02995353	1	Belt Cover, Right (915164)
35	00607553	1	Belt Cover, Left (915160)
	00486853	1	Belt Cover, Left (915162)
	02995253	1	Belt Cover, Left (915164)
36	06435700	6	Washer, Flat Steel .38 x .875 x .083
37	06219200	6	Bolt, Round Head Square Neck .31-18 x 1.25 Grade 5
38	06228100	1	Bolt, Round Head Square Neck .38-16 x 3.0 Grade 5
39	06545400	17	Nut, .31-18 Nyloc Flange (915162, 164)
	06545400	19	Nut, .31-18 Nyloc Flange (915160)
40	05947000	4	Bolt, Hex .31-18 x .75 Grade 5 (915162, 164)
	05947000	6	Bolt, Hex .31-18 x .75 Grade 5 (915160)
41	06537300	1	Nut, Hex .50-13
42	05959700	1	Bolt, Hex .50-13 x 2.00 Grade 5
43	06223600	1	Bolt, Round Head Square Neck .38-16 x 1.00 Grade 5
44	06212200	1	Bolt, Round Head Square Neck .31-18 x .62
45	05515800	2	Bushing, Flange .406 x .88 x .270 x .140
46	02989953	1	Deflector, 42 Deck (915160)
	01975553	1	Deflector, 48/54 Deck (915162, 164)

# ANTI-SCALP WHEELS

Models 915160, 162, 164



Item	Part No.	Qty.	Description
1	07056800	2	Bolt, Shoulder .38-16 x 2.50 Hex Washer Head Grade 5
2	03114100	2	Roller
3	05968400	2	Bolt, Hex .50-13 x 8.00 Grade 5
4	06443300	6	Washer, Flat Nylon .52 x 1.00 x .08
5	03905600	2	Wheel 5 x 3
6	06542000	2	Nut, Locking Top Flange .38-16
7	06540600	2	Nut, Locking Nylon .50-13
8	05946900	2	Bolt, Hex .31-18 x 1.00 Grade 5
9	06500011	2	Nut, Locking Center Jam .31-18
10	06200008	3	Bolt, Round Head Square Neck .31-18 x 1.25 Grade 5
11	03262353	1	Bracket, Chute Brace, Inner
12	02973600	1	Chute, Discharge, Rubber
13	05947000	2	Bolt, Hex .31-18 x .75 Grade 5
14	06435900	2	Washer, Flat Steel .438 x 1.00 x .083
15	02975853	1	Bracket, Discharge Chute
16	06545400	5	Nut, .31-18 Nyloc Flange
17	07534800	2	Knob, Clamping .31-18



GRAVELY  
655 West Ryan Street  
Brillion, WI 54110  
920-756-4688  
Fax 920-756-2407  
[www.gravelly.com](http://www.gravelly.com)

An *Ariens* Company Brand