

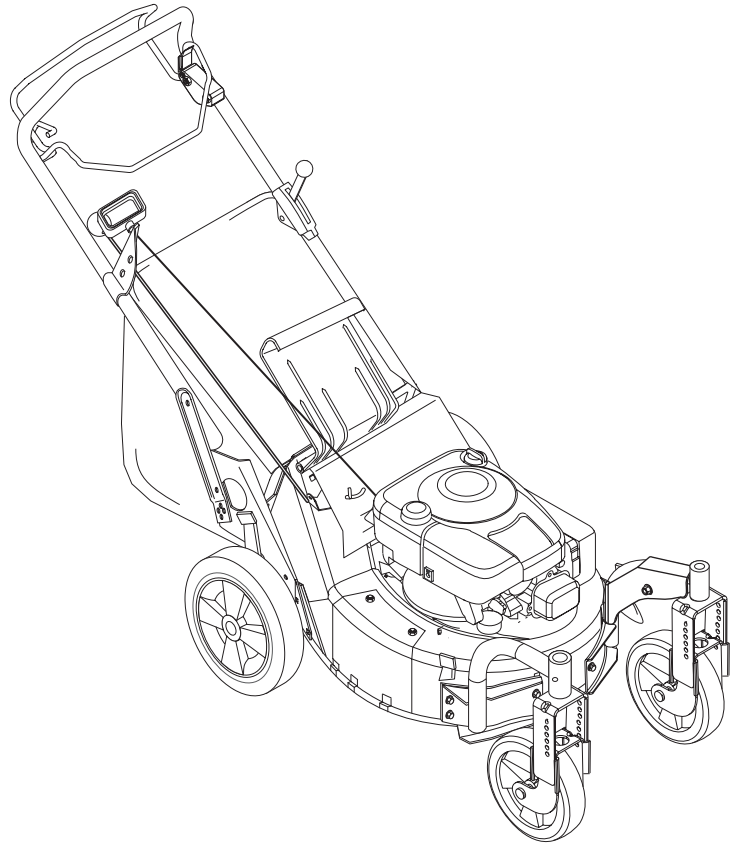


Walk-Behind Lawn Mowers®

Parts Manual

Models

911099 - LM21SH
911101 - LM21SWH
911102 - PRO21SCH
911330 - LM21SW
911331 - LM21SE
911514 - LM21S
911515 - LM21SE
911525 - LM21SW
911526 - LM21SC
911527 - LM21SCHB
911531 - LM21S



THE MANUAL

Before you operate your unit, carefully and completely read manuals supplied with the unit. The contents will provide you with an understanding of safety instructions and controls during normal operation and maintenance.

For your safety and the safety of others always read, understand, and follow all DANGER, WARNING, and CAUTION messages found in manuals and on safety decals.

Hardware descriptions are given in decimals.

| Decimals to Fractions | | | |
|-----------------------|------|------|-------|
| .063 | 1/16 | .563 | 9/16 |
| .125 | 1/8 | .625 | 5/8 |
| .188 | 3/16 | .688 | 11/16 |
| .250 | 1/4 | .750 | 3/4 |
| .313 | 5/16 | .813 | 13/16 |
| .375 | 3/8 | .875 | 7/8 |
| .438 | 7/16 | .938 | 15/16 |
| .500 | 1/2 | 1.00 | 1 |

SERVICE AND REPLACEMENT PARTS

When ordering replacement parts or making service inquiries, know the Model and Serial numbers of your unit and engine.

Numbers are located on the product registration card in the unit literature package. They are printed on a serial number label, located on the frame of your unit.

- Record Unit Model and Serial numbers here:

- Record Engine Model and Serial numbers here:

UNAUTHORIZED REPLACEMENT PARTS

Use only Ariens replacement parts. The replacement of any part on this vehicle with anything other than an Ariens authorized replacement part may adversely affect the performance, durability, or safety of this unit and may void the warranty. Ariens disclaims liability for any claims or damages, whether warranty, property damage, personal injury or death arising out of the use of unauthorized replacement parts.

PRODUCT REGISTRATION

The Ariens dealer must register the product at the time of purchase. Registering the product will help the company process warranty claims or contact you with the latest service information. All claims meeting requirements during the limited warranty period will be honored, whether or not the product registration card is returned. Keep a proof of purchase if you do not register your unit.

Customer Note: If the dealer does not register your product, please fill out, sign, and return the product registration card to Ariens.

YOUR SATISFACTION IS IMPORTANT

Questions? Please follow these helpful steps:

1. Refer to the manuals supplied with your unit.
They will guide you through safe and proper operation and maintenance.
They contain specifications on your unit.
If your questions are not answered in these manuals, go to step number two.
2. Contact Your Dealer.
Our dealers will be happy to supply any service or advice required to keep your unit operating at peak efficiency.
A factory trained staff is available to support your equipment needs. They stock genuine Ariens parts and lubricants manufactured with the same precision and skill as the original.
If your questions are not resolved by the support staff, ask for the manager or owner.
When contacting your Dealer supply your model and serial numbers.

TO SPEED PARTS ORDERING:

1. Know the model and serial numbers of your unit.
2. Know the part number required.
3. Know the quantity required.
4. Know the part description.

MODELS

Model 911099 (LM21SH)

4 Cycle-Honda GVC OHC 5.5 HP
Recoil, Self-Propelled
Serial No. 000101 and up

Model 911101 (LM21SWH)

4 Cycle-Honda GCV OHC 5.5 HP
Recoil, Self-Propelled, Swivel
Serial No. 000101 and up

Model 911102 (PRO21SCH)

4 Cycle-Honda GXV OHV 5.5 HP
Recoil, Self-Propelled
Serial No. 000101 and up

Model 911330 (LM21SW)

4 Cycle-Briggs & Stratton Quantum 6.5HP
Recoil, Self-Propelled, Swivel
Serial No. 000101 and up

Model 911331 (LM21SE)

4 Cycle-Briggs & Stratton Intek OHV 6.75 HP
Electric, Self-Propelled
Serial No. 000101 and up

Model 911514 (LM21S)

4 Cycle-Briggs & Stratton Intek OHV 6.75 HP
Recoil, Self-Propelled
Serial No. 019501 and up

Model 911515 (LM21SE)

4 Cycle-Briggs & Stratton Intek OHV 6.75 HP
Electric, Self-Propelled
Serial No. 005001 and up

Model 911525 (LM21SW)

4 Cycle-Briggs & Stratton Intek OHV 6.75 HP
Recoil, Self-Propelled, Swivel
Serial No. 007001 and up

Model 911526 (LM21SC)

4 Cycle-Briggs & Stratton Intek Pro 6.75HP
Recoil, Self-Propelled, Commercial
Serial No. 001501 and up

Model 911527 (LM21SCHB)

4 Cycle-Briggs & Stratton Intek Pro OHV 6.75 HP
Recoil, Self-Propelled, Commercial
Serial No. 000101 and up

Model 911531 (LM21S)

4 Cycle-Briggs & Stratton Quantum 6.5HP
Recoil, Self-Propelled
Serial No. 000101 and up

TABLE OF CONTENTS

DECALS

Decals 4

MAIN FRAME

Handlebar and Controls 6

Mower Pan and Bag 8

WHEELS

Wheels and Adjusters 10

Friction Wheel and Adjusters 12

Swivel Wheels and Brackets 15

ENGINE

Engine, Blade, Belt and Wiring Harness 16

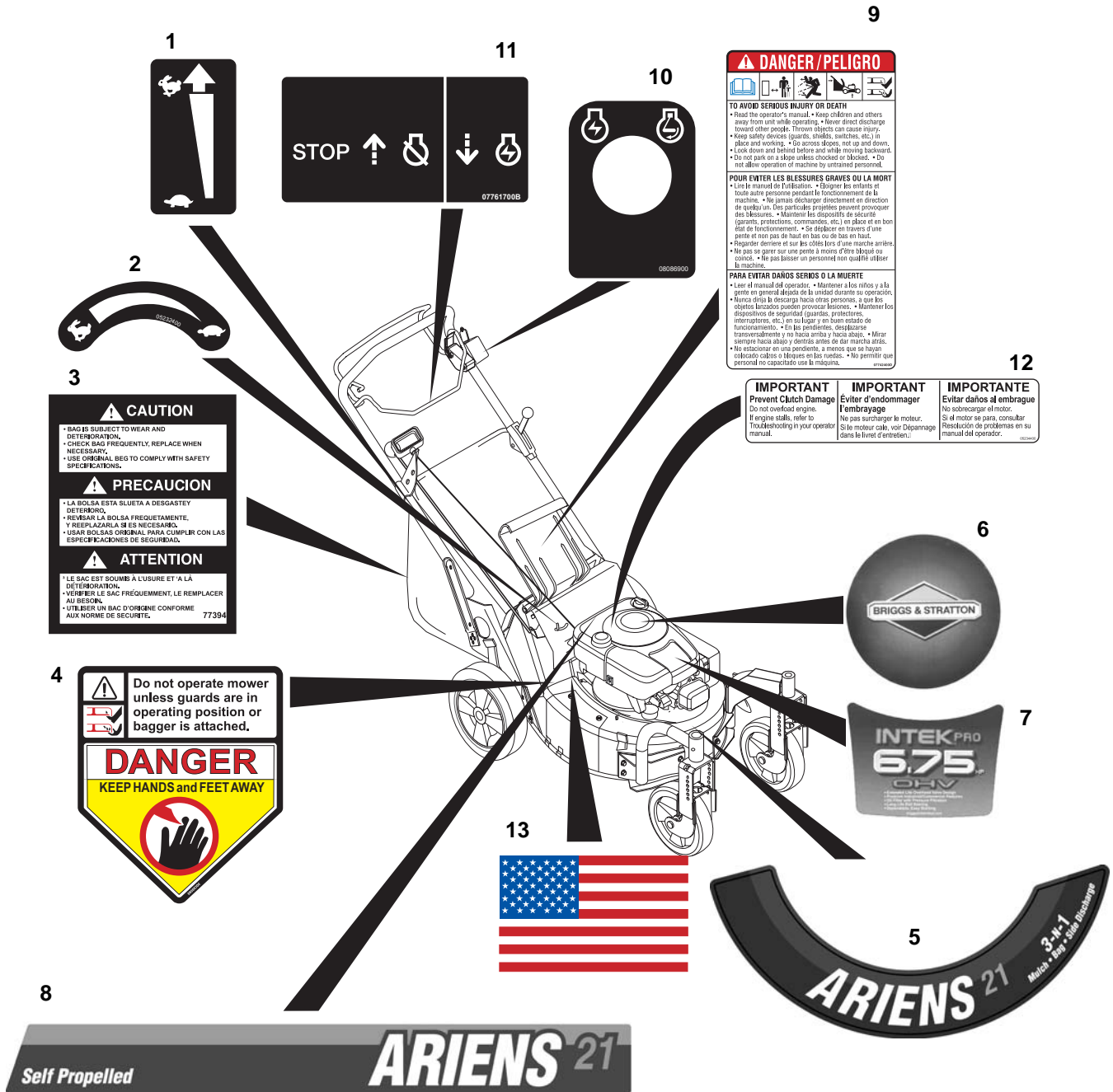
Engine-BBC, Blade and Belt 17

ELECTRICAL

Electrical and Continuity Diagram 18

DECALS

Model 911099, 101, 102, 330, 331, 514, 515, 525, 526, 527, 531



PM0046

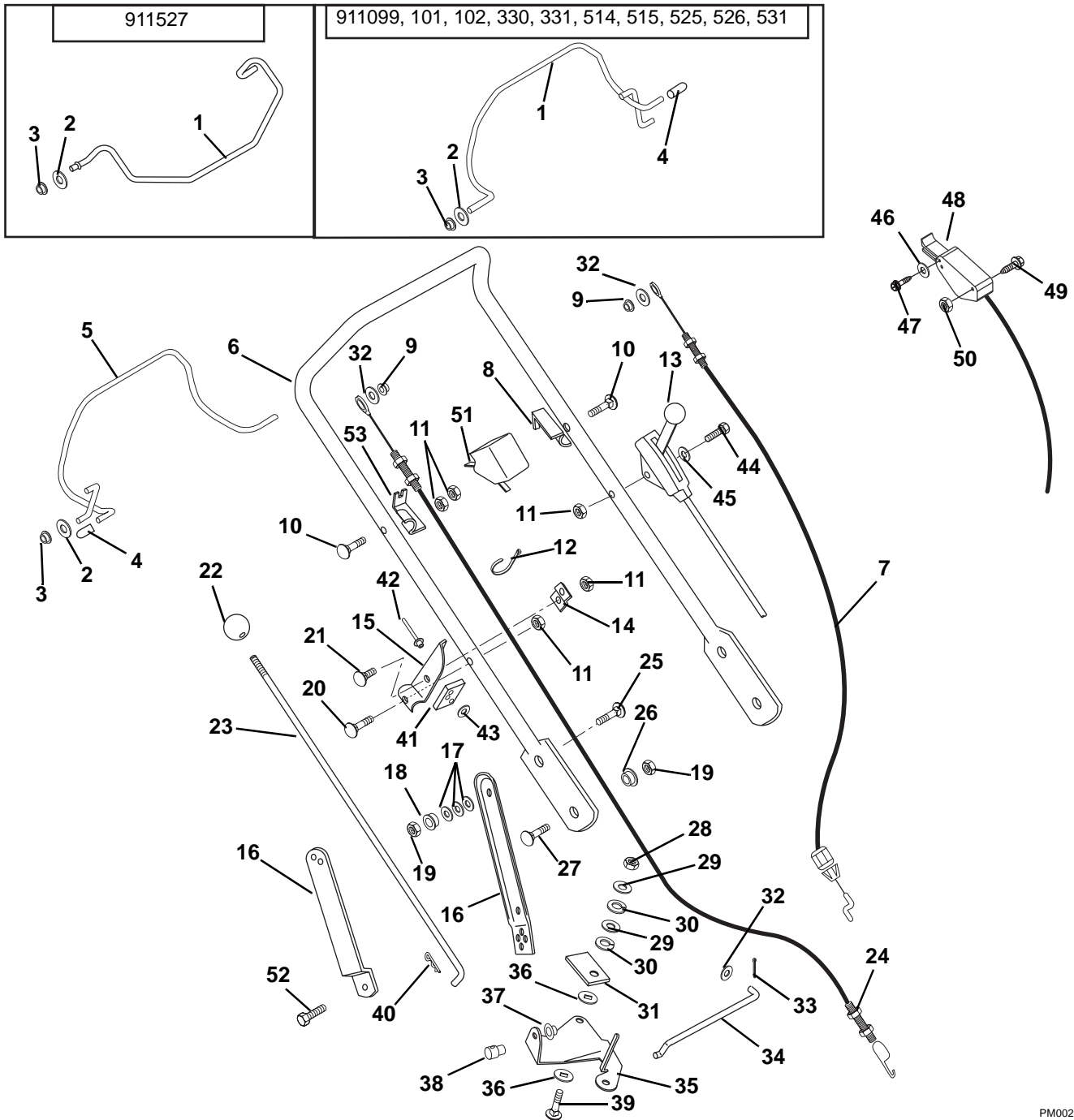
DECALS

Model 911099, 101, 102, 330, 331, 514, 515, 525, 526, 527, 531

| Item | Part No. | Qty. | Description |
|------|----------|------|--|
| 1 | 07760700 | 1 | Decal, Speed Control |
| 2 | 05232400 | 1 | Decal, Turtle & Rabbit |
| 3 | 07739400 | 1 | Label, Bagger 21" |
| 4 | 08088300 | 1 | Decal, CPSC Danger |
| 5 | 08087900 | 1 | Decal, Ariens Deck (99, 101, 330, 331, 514, 515, 525, 526, 527, 531) |
| | 05360100 | 1 | Decal, Ariens Deck (102) |
| 6 | 05239000 | 1 | Decal, Round Briggs and Stratton (331, 514, 515, 525, 526, 527) |
| | 01474000 | 1 | Decal, Honda GCV (099, 101) |
| 7 | 05238900 | 1 | Decal, Briggs and Stratton Intek Pro 6.75 (526, 527) |
| | 05239100 | 1 | Decal, Briggs and Stratton Intek 6.75HP (331, 514, 515, 525) |
| | 05238500 | 1 | Decal, Briggs and Stratton Quantum 6.5 (330, 531) |
| 8 | 08088000 | 1 | Decal, Drive Cover Self Propelled (099, 101, 330, 331, 514, 515, 525, 531) |
| | 08088100 | 1 | Decal, Drive Cover Self Propelled Professional (102, 526, 527) |
| | 05230700 | 1 | Decal, Blade Brake/Clutch Drive Cover (527) |
| 9 | 07742400 | 1 | Decal, Bilingual Danger |
| 10 | 08086900 | 1 | Decal, Key Switch (331, 515) |
| 11 | 07761700 | 1 | Decal, Engine Control (330, 331, 514, 515, 525, 526, 531) |
| 12 | 05234400 | 1 | Decal, Blade Brake/Clutch Instruction (527) |
| 13 | 05305100 | 1 | Decal, American Flag |

HANDLEBAR AND CONTROLS

Model 911099, 101, 102, 330, 331, 514, 515, 525, 526, 527, 531



PM0026

| Item | Part No. | Qty. | Description |
|------|----------|------|---|
| 1 | 01199651 | 1 | Bail, Engine (099, 101, 330, 331, 514, 515, 525, 526, 531) |
| | 01191551 | 1 | Bail, Blade Brake/Clutch (527) |
| 2 | 06437200 | 4 | Washer, Flat Steel .32 x .44 x .44 x .56 (099, 101, 102, 330, 331, 514, 515, 525, 526, 531) |
| | 06437200 | 3 | Washer, Flat Steel .32 x .44 x .44 x .56 (527) |
| 3 | 05514500 | 4 | Bushing, Flange .325 x .688 x .560 (099, 101, 102, 330, 331, 514, 515, 525, 526, 531) |
| | 05514500 | 3 | Bushing, Flange .325 x .688 x .560 (527) |
| 4 | 07517000 | 2 | Cap, Vinyl .25 I.D. (099, 101, 102, 330, 331, 514, 515, 525, 526, 531) |
| | 07517000 | 1 | Cap, Vinyl .25 I.D. (527) |
| 5 | 01199551 | 1 | Traction Bail (099, 101, 102, 330, 331, 514, 515, 525, 526, 527, 531) |
| 6 | 01184851 | 1 | Handlebar |

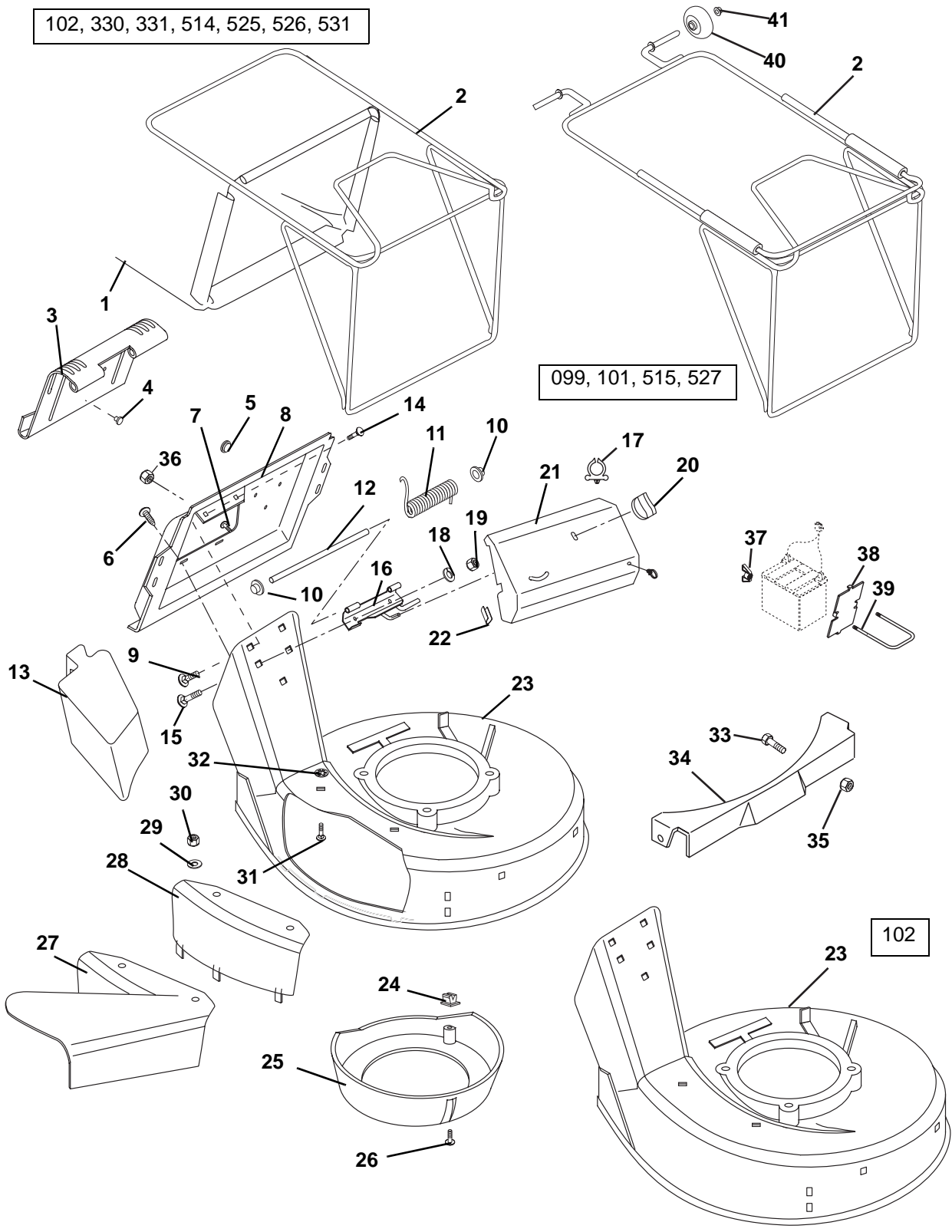
HANDLEBAR AND CONTROLS

Model 911099, 101, 102, 330, 331, 514, 515, 525, 526, 527, 531

| Item | Part No. | Qty. | Description |
|------|----------|------|--|
| 7 | 06949700 | 1 | Cable, Engine Briggs and Stratton (102, 330, 331, 514, 515, 525, 526, 531) |
| | 06940001 | 1 | Cable, Engine Honda OHC (099, 101) |
| 8 | 01155751 | 2 | Cable Anchor (099, 101, 330, 331, 514, 515, 525, 526, 531) |
| | 01155751 | 1 | Cable Anchor (099, 514) |
| 9 | 02215300 | 2 | Push Nut, .25 (099, 101, 330, 331, 514, 515, 525, 526, 531) |
| | 05717600 | 2 | Ring, Retaining External .25 x .01 (102) |
| | 02215300 | 1 | Push Nut, .25 (527) |
| 10 | 06220100 | 2 | Bolt, Round Head Square Neck .25-20 x 1.25 (099, 101, 330, 331, 514, 515, 525, 526, 531) |
| | 06220100 | 1 | Bolt, Round Head Square Neck .25-20 x 1.25 (527) |
| 11 | 06529700 | 5 | Nut, Locking Center .25-20 (099, 101, 102, 330, 331, 514, 515, 525, 526, 531) |
| | 06529700 | 4 | Nut, Locking Center .25-20 (527) |
| 12 | 07517300 | 3 | Cable Tie |
| 13 | 06948100 | 1 | Cable, Lockout Control (101, 330, 525) |
| | 06950300 | 1 | Control, Throttle - Honda (102) |
| | 06946400 | 1 | Throttle Cable (527) |
| | 06948800 | 1 | Throttle Cable (526) |
| 14 | 01141851 | 1 | Brace, Speed Control (099, 101, 102, 330, 331, 514, 515, 525, 526, 531) |
| 15 | 01137451 | 1 | Bracket, Speed Control (099, 101, 102, 330, 331, 514, 515, 525, 526, 531) |
| 16 | 01150051 | 1 | Link, Handlebar Adjuster Left Hand (099, 101, 102, 330, 331, 514, 515, 525, 531) |
| | 01150151 | 1 | Link, Handlebar Adjuster Right Hand (099, 101, 102, 330, 331, 514, 515, 525, 531) |
| | 01158651 | 2 | Handlebar Bracket (526, 527) |
| 17 | 01178700 | 6 | Washer, Bellville Spring (099, 101, 102, 330, 331, 514, 515, 525, 527, 531) |
| 18 | 05514900 | 2 | Bushing, Flange .325 x .50 x .513 x .875 (099, 101, 102, 330, 331, 514, 515, 525, 531) |
| 19 | 06529800 | 4 | Nut, Locking Center .31-18 |
| 20 | 06222300 | 1 | Bolt, Round Head Square Neck .25-20 x 1.38 |
| 21 | 06220600 | 1 | Bolt, Round Head Square Neck .25-20 x .50 Grade |
| 22 | 07515900 | 1 | Knob |
| 23 | 01140800 | 1 | Rod, Speed Control (099, 101, 330, 331, 514, 515, 525, 526, 527, 531) |
| 24 | 06949600 | 1 | Traction Cable |
| 25 | 06216100 | 2 | Bolt, Round Head Square Neck .31-18 x 1.00 Grade 5 |
| 26 | 01305900 | 2 | Shoulder Spacer |
| 27 | 06215700 | 2 | Bolt, Round Head Square Neck .31-18 x .75 Grade 5 (099, 101, 330, 331, 514, 515, 525, 531) |
| | 06216100 | 2 | Bolt, Round Head Square Neck .31-18 x 1.00 Grade 5 (102, 526, 527) |
| 28 | 06529600 | 1 | Nut, Locking Center .38-16 |
| 29 | 06436200 | 2 | Washer, Flat Steel .406 x .812 x .065 |
| 30 | 06306500 | 2 | Washer, Lock .375 x .115 Heavy |
| 31 | 01154800 | 1 | Pressure Flange |
| 32 | 06437300 | 3 | Washer, Flat Steel .281 x .62 x .065 (099, 101, 102, 330, 331, 514, 515, 525, 526, 531) |
| | 06437300 | 2 | Washer, Flat Steel .281 x .62 x .065 (527) |
| 33 | 06712400 | 1 | Pin, Cotter .06 x .50 |
| 34 | 01126100 | 1 | Shift Link |
| 35 | 01123900 | 1 | Bell Crank, Speed Control |
| 36 | 01123800 | 2 | Friction Washer |
| 37 | 01019800 | 1 | Cap, Rod .375 |
| 38 | 01139800 | 1 | Swivel |
| 39 | 06222200 | 1 | Bolt, Round Head Square Neck .38-16 x 1.25 |
| 40 | 06713500 | 1 | Pin, Hair Internal .08 x .18 x 1.18 |
| 41 | 01173800 | 1 | Support Pad |
| 42 | 06815700 | 2 | Rivet .187 x .575 |
| 43 | 06442700 | 2 | Washer, Flat Steel .219 x .50 x .049 |
| 44 | 06209300 | 1 | Bolt, Round Head Square Neck .25-20 x 2.00 (527) |
| | 06220000 | 1 | Bolt, Round Head Square Neck .25-20 x 1.75 Grade 5 (526) |
| 45 | 06442300 | 1 | Washer, Flat Steel .250 x .562 x .049 (101, 102, 525, 526) |
| | 06437300 | 1 | Washer, Flat Steel .281 x .62 x .065 (527) |
| 46 | 06442700 | 1 | Washer, Flat Steel .219 x .50 x .049 (527) |
| 47 | 07415800 | 1 | Screw, Tapping 10-24 x .50 Hex Washer Head (527) |
| 48 | 06950200 | 1 | Cable, Blade Brake/Clutch without Spring (527) |
| 49 | 06116800 | 2 | Screw, Machine 10-24 x 2.00 Hex Washer Head (527) |
| 50 | 06536600 | 2 | Nut, Hex 10-24 (527) |
| 51 | 01156400 | 1 | Switch, Cable Anchor (331, 515) |
| 52 | 05947000 | 2 | Bolt, Hex .31-18 x .75 Grade 5 (526, 527) |
| 53 | 01240551 | 1 | Cable Anchor (527) |

MOWER PAN AND BAG

Model 911099, 101, 102, 330, 331, 514, 515, 525, 526, 527, 531



PM0010

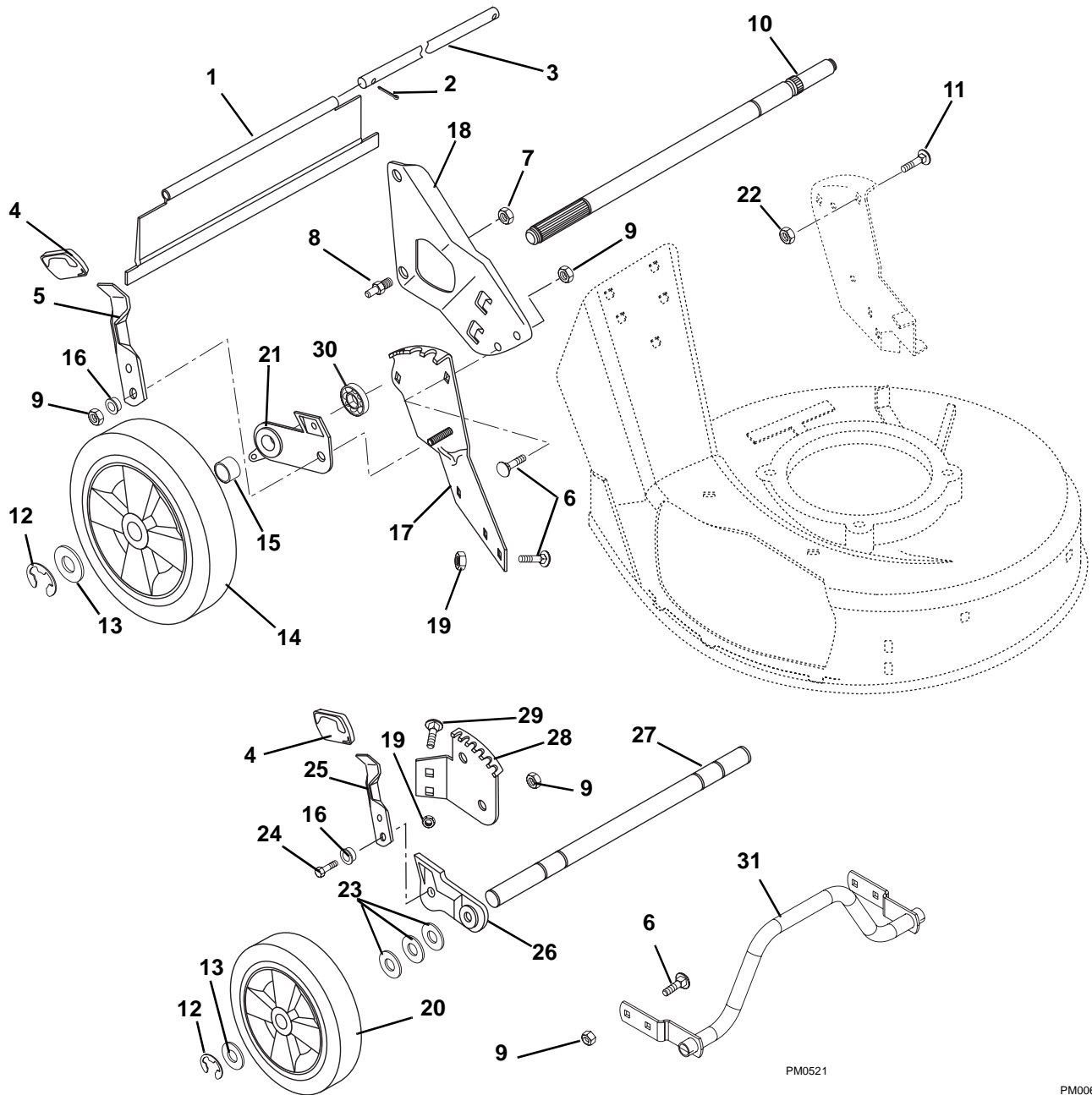
MOWER PAN AND BAG

Model 911099, 101, 102, 330, 331, 514, 515, 525, 526, 527, 531

| Item | Part No. | Qty. | Description |
|------|----------|------|--|
| 1 | 01180500 | 1 | Bag, Consumer Black (102, 330, 331, 514, 525, 526, 531) |
| | 01241900 | 1 | Bag, Bag-N-Drag (099, 101, 515, 527) |
| 2 | 01138751 | 1 | Frame, Bagger (102, 330, 331, 514, 525, 526, 531) |
| | 01241100 | 1 | Frame, Bag-N-Drag (099, 101, 515, 527) |
| 3 | 01136559 | 1 | Door, Catcher Plate |
| 4 | 07516000 | 1 | Button Bumper |
| 5 | 07511800 | 2 | Bumper |
| 6 | 07411900 | 4 | Screw, Tapping Hex Washer 12-24 x .50 (099, 101, 330, 331, 514, 515, 525, 526, 531) |
| 7 | 07414900 | 2 | Screw, Tapping 10-24 x .38 Pan Head |
| 8 | 01159759 | 1 | Plate, Catcher (099, 101, 330, 331, 514, 515, 525, 531) |
| | 01177759 | 1 | Plate, Catcher (102, 526, 527) |
| 9 | 06203900 | 2 | Bolt, Round Head Square Neck .25-20 x .38 |
| 10 | 02215300 | 2 | Nut, Push |
| 11 | 08322400 | 1 | Spring, Torsion .120 x .68 x 3.09 |
| 12 | 01141000 | 1 | Pin, Door |
| 13 | 71102700 | 1 | Mulch Master Mulcher Accessory |
| 14 | 06530100 | 2 | Nut, Locking Flange .25-20 |
| 15 | 06219900 | 2 | Bolt, Round Head Square Neck .25-20 x .75 Grade 5 |
| 16 | 01155559 | 1 | Hinge Base Weldment (099, 101, 330, 331, 514, 515, 525, 526, 527, 531) |
| | 01139959 | 1 | Hinge Plate Weldment (102) |
| 17 | 01166500 | 1 | Clip, Snap In (101, 525, 526, 527) |
| 18 | 06308000 | 2 | Washer, Locking .25 x .077 |
| 19 | 06533200 | 2 | Nut, Hex .25-20 |
| 20 | 01159300 | 1 | Nut, Wing (099, 101, 330, 331, 514, 515, 525, 526, 527, 531) |
| 21 | 01158859 | 1 | Drive Cover (099, 101, 330, 331, 514, 515, 525, 526, 527, 531) |
| 22 | 01155400 | 2 | Trim Bumper |
| 23 | 51107500 | 1 | Mower Pan Head with Decals (099, 101, 330, 331, 514, 515, 525, 526, 531) |
| | 51107100 | 1 | Mower Pan Head with Decals (102) |
| | 51107900 | 1 | Mower Pan Head Head with Decal Self Propelled Blade Brake/Clutch (527) |
| 24 | 07507600 | 3 | Grommet, Plastic |
| 25 | 01173700 | 1 | Baffle, Center |
| 26 | 07415000 | 3 | Screw, Tapping 10-16 x .62 Hex Washer Head |
| 27 | 01180200 | 1 | Side Discharge Assembly |
| 28 | 01180351 | 1 | Side Discharge Cover |
| 29 | 06436200 | 2 | Washer, Flat Steel .406 x .812 x .065 |
| 30 | 06530200 | 2 | Nut, Locking Nylon .312-18 |
| 31 | 06214100 | 2 | Bolt, Round Head Square Neck .31-18 x .75 Grade 2 |
| 32 | 06514900 | 2 | Nut, Push .312 |
| 33 | 06222000 | 2 | Bolt, Round Head Square Neck .31-18 x .50 Grade 5 (099, 101, 331, 514, 515, 526, 527, 531) |
| 34 | 01183559 | 1 | Front Panel (099, 101, 331, 514, 515, 526, 527, 531) |
| 35 | 06529800 | 2 | Nut, Locking Center .31-18 (099, 101, 331, 514, 515, 526, 527, 531) |
| | 06530400 | 2 | Nut, Spin Lock Flange .31-18 (102) |
| 36 | 06530100 | 4 | Nut, Locking Flange .250-20 (526, 527) |
| 37 | 06538100 | 2 | Nut, Wing #8-32 (331, 515) |
| 38 | 01178559 | 1 | Battery Plate (331, 515) |
| 39 | 01178600 | 1 | U-Bolt (331, 515) |
| 40 | 02745400 | 2 | Roller |
| 41 | 01019800 | 2 | Cap, .38 Rod |

WHEELS AND ADJUSTERS

Model 911099, 101, 102, 330, 331, 514, 515, 525, 526, 527, 531



| Item | Part No. | Qty. | Description |
|------|----------|------|---|
| 1 | 07522300 | 1 | Rear Protective Guard, Self Propelled (099, 101, 102, 330, 331, 514, 515, 525, 526, 527, 531) |
| 2 | 06712400 | 3 | Pin, Cotter .06 x .50 |
| 3 | 01140000 | 1 | Rod |
| 4 | 07513600 | 4 | Knob |
| 5 | 01242000 | 2 | Lever, Height Adjustment |
| 6 | 06212200 | 10 | Bolt, Round Head Square Neck .31-18 x .62 (099, 101, 330, 331, 514, 515, 525, 531) |
| | 06212200 | 13 | Bolt, Round Head Square Neck .31-18 x .62 (102) |
| | 06212200 | 14 | Bolt, Round Head Square Neck .31-18 x .62 (526, 527) |
| 7 | 06529600 | 2 | Nut, Locking Center .38-16 |

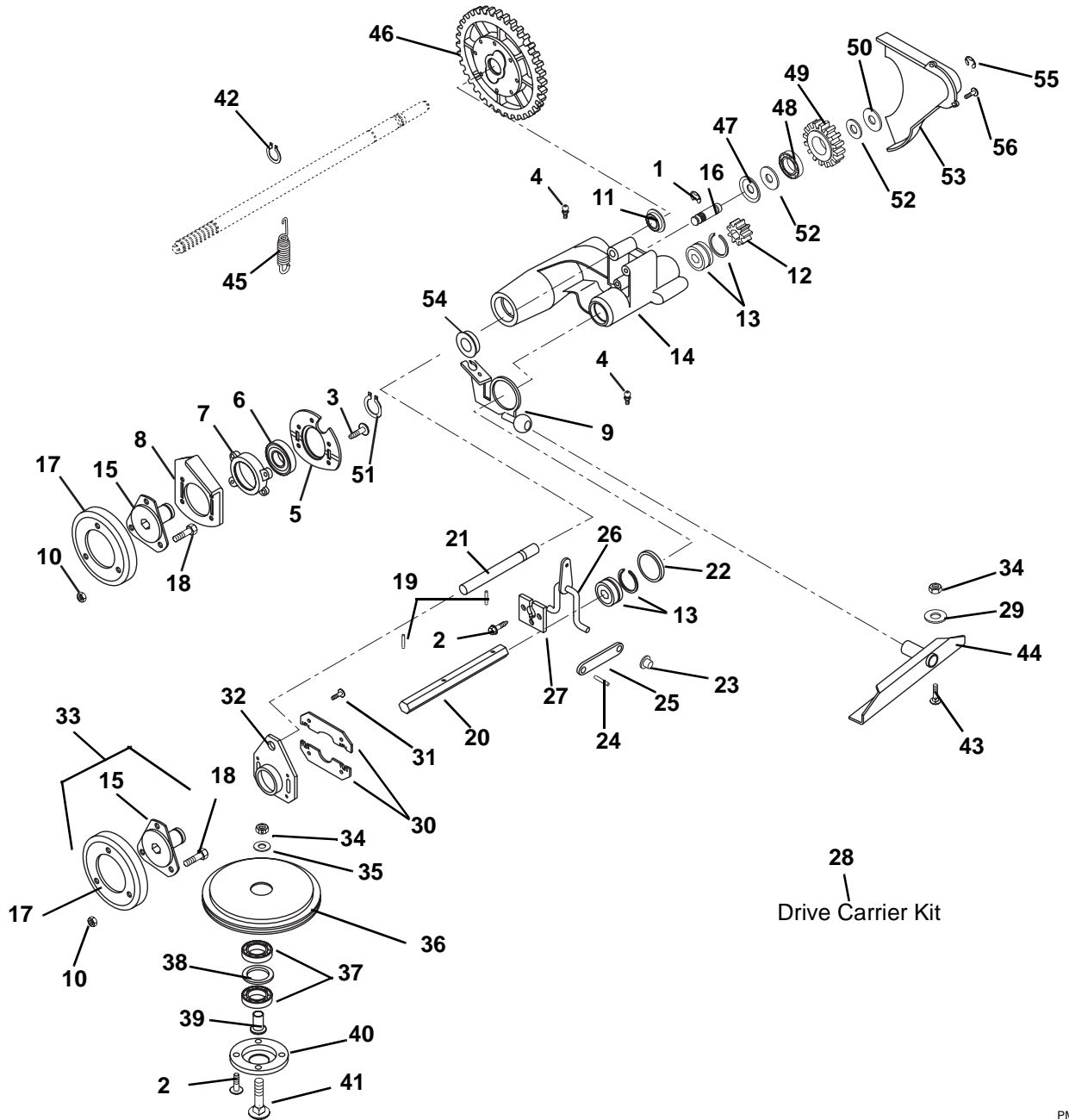
WHEELS AND ADJUSTERS

Model 911099, 101, 102, 330, 331, 514, 515, 525, 526, 527, 531

| Item | Part No. | Qty. | Description |
|------|----------|------|--|
| 8 | 01167100 | 2 | Handlebar Stud |
| 9 | 06529800 | 8 | Nut, Locking Center .31-18 (099, 101, 330, 331, 514, 515, 525, 531) |
| | 06529800 | 12 | Nut, Locking Center .31-18 (102, 526, 527) |
| 10 | 01149500 | 1 | Rear Axle |
| 11 | 06221800 | 1 | Bolt, Round Head Square Short Neck .31-18 x 1.00 |
| 12 | 05710200 | 2 | Ring, Retaining External .50 x .042 (101, 525) |
| | 05710200 | 4 | Ring, Retaining External .50 x .042 (099, 330, 331, 514, 515, 526, 527, 531) |
| 13 | 06436600 | 4 | Washer, Flat Steel .505 x .88 x .072 (099, 101, 102, 330, 331, 514, 515, 525, 526, 527, 531) |
| | 06436600 | 2 | Washer, Flat Steel .505 x .88 x .072 (330) |
| 14 | 07151200 | 1 | Wheel, Left Hand Rear |
| | 07151500 | 1 | Wheel, Right Hand Rear |
| | 07103900 | 2 | Tire Skin 10 x 2.00 |
| 15 | 01149600 | 2 | Spacer Tube |
| 16 | 05514800 | 4 | Bushing, Flange .312 x .50 x .344 x .88 (099, 101, 102, 331, 514, 515, 525, 526, 527, 531) |
| | 05514800 | 2 | Bushing, Flange .312 x .50 x .344 x .88 (330) |
| 17 | 01154251 | 1 | Rear Quadrant-Left Hand |
| | 01154351 | 1 | Rear Quadrant-Right Hand |
| 18 | 01137251 | 1 | Bracket, Handlebar Mounting-Right Hand (099, 101, 330, 331, 514, 515, 525, 531) |
| | 01137151 | 1 | Bracket, Handlebar Mounting-Left Hand (099, 101, 330, 331, 514, 515, 525, 531) |
| | 01177451 | 1 | Bracket, Handlebar Mounting-Right Hand (102, 526, 527) |
| | 01177551 | 1 | Bracket, Handlebar Mounting-Left Hand (102, 526, 527) |
| 19 | 06530400 | 6 | Nut, Locking Flanged .31-18 (101, 525) |
| | 06530400 | 10 | Nut, Locking Flanged .31-18 (099, 101, 102, 330, 331, 514, 515, 526, 527, 531) |
| 20 | 07149900 | 2 | Wheel, Front |
| 21 | 01130700 | 1 | Rear Adjuster Bracket-Left Hand |
| | 01150400 | 1 | Rear Bracket and Bearing Assembly (099, 101, 330, 331, 514, 515, 525, 526, 527, 531) |
| | 01130800 | 1 | Rear Adjuster Bracket-Right Hand (526, 527) |
| | 01130700 | 1 | Rear Adjuster Bracket-Left Hand (102, 526, 527) |
| 22 | 06530200 | 1 | Nut, Locking Nylon .31-18 |
| 23 | 06441100 | 6 | Washer, Flat Steel .520 x .827 x .062 (099, 331, 514, 515, 526, 527, 531) |
| 24 | 05946900 | 2 | Bolt, Hex .31-18 x 1.00 Grade 5 (099, 331, 514, 515, 526, 527, 531) |
| 25 | 01120000 | 2 | Lever, Front Height Adjustment (099, 331, 514, 515, 526, 527, 531) |
| 26 | 01119800 | 1 | Left Hand Bracket Assembly |
| | 01119900 | 1 | Right Hand Bracket Assembly |
| 27 | 01168900 | 1 | Front Axle (099, 102, 331, 514, 515, 526, 527, 531) |
| 28 | 01154051 | 1 | Front Quadrant, Left Hand (099, 102, 331, 514, 515, 526, 527, 531) |
| | 01154151 | 1 | Front Quadrant, Right Hand (099, 102, 331, 514, 515, 526, 527, 531) |
| 29 | 06222000 | 4 | Bolt, Round Head Square Neck .31-18 x .50 Grade 5 (099, 331, 514, 515, 526, 527, 531) |
| 30 | 05417600 | 1 | Bearing, Ball .625 x 1.383 x .50 (526, 527) |
| 31 | 01242751 | 1 | Guard, LM Valve Cover(526, 527) |

FRICION WHEEL AND DRIVE

Model 911099, 101, 102, 330, 331, 514, 515, 525, 526, 527, 531



PM0081

FRICTION WHEEL AND DRIVE

Model 911099, 101, 102, 330, 331, 514, 515, 525, 526, 527, 531

| Item | Part No. | Qty. | Description |
|------|----------|------|---|
| 1 | 05705900 | 1 | Ring, Retaining External .438 x .035 |
| 2 | 07411900 | 6 | Screw, Tapping 12-24 x .50 Hex Washer Head |
| 3 | 07415100 | 4 | Screw, Tapping 5 x 0.8 x 16MM (102, 526, 527) |
| | 07415100 | 4 | Screw, Tapping 5 x 0.8 x 16MM (911099 s/n 892 & up; 911101 s/n 1360 & up; 911330 s/n 1772 & up; 911331 s/n 220 & up; 911514 s/n 25,000 & up; 911515 s/n 7,000 & up; 911525 s/n 17,000 & up; 911531 s/n 8,000 & up) |
| 4 | 07012600 | 2 | Fitting, Lube .25-28 x .256 (102, 526, 527) |
| | 07012600 | 2 | Fitting, Lube .25-28 x .256 (911099 s/n 892 & up; 911101 s/n 1360 & up; 911330 s/n 1772 & up; 911331 s/n 220 & up; 911514 s/n 25,000 & up; 911515 s/n 7,000 & up; 911525 s/n 17,000 & up; 911531 s/n 8,000 & up) |
| 5 | 01119200 | 1 | Bearing Retainer (102, 526, 527) |
| | 01119200 | 1 | Bearing Retainer (911099 s/n 892 & up; 911101 s/n 1360 & up; 911330 s/n 1772 & up; 911331 s/n 220 & up; 911514 s/n 25,000 & up; 911515 s/n 7,000 & up; 911525 s/n 17,000 & up; 911531 s/n 8,000 & up) |
| 6 | 05416000 | 1 | Bearing Ball 1.00 x 2.00 x .56 (102, 526, 527) |
| | 05416000 | 1 | Bearing Ball 1.00 x 2.00 x .56 (911099 s/n 892 & up; 911101 s/n 1360 & up; 911330 s/n 1772 & up; 911331 s/n 220 & up; 911514 s/n 25,000 & up; 911515 s/n 7,000 & up; 911525 s/n 17,000 & up; 911531 s/n 8,000 & up) |
| 7 | 01131800 | 1 | Bearing Retainer (102, 526, 527) |
| | 01131800 | 1 | Bearing Retainer (911099 s/n 892 & up; 911101 s/n 1360 & up; 911330 s/n 1772 & up; 911331 s/n 220 & up; 911514 s/n 25,000 & up; 911515 s/n 7,000 & up; 911525 s/n 17,000 & up; 911531 s/n 8,000 & up) |
| 8 | 01132700 | 1 | Bearing Plate (102, 526, 527) |
| | 01132700 | 1 | Bearing Plate (911099 s/n 892 & up; 911101 s/n 1360 & up; 911330 s/n 1772 & up; 911331 s/n 220 & up; 911514 s/n 25,000 & up; 911515 s/n 7,000 & up; 911525 s/n 17,000 & up; 911531 s/n 8,000 & up) |
| 9 | 01137900 | 1 | Drive Actuator Weldment |
| 10 | 06529700 | 3 | Nut, Locking Center .25-20 (102, 526, 527) |
| 11 | 05417500 | 1 | Bearing, Ball .625 x 1.38 x .44 |
| 12 | 02201100 | 1 | Gear, Pinion |
| 13* | 05413700 | 2 | Bearing, Ball .562 x 1.375 x .437 |
| 14 | 01140600 | 1 | Drive Mount (911099 s/n 101-891; 911101 s/n 101-1359; 911330 s/n 101-1771; 911331 s/n 101-219; 911514 s/n 19,501-24,999; 911515 s/n 5,001-6,999; 911525 s/n 7,001-16,999; 911531 s/n 101-7,999) |
| | 01158700 | 1 | Drive Carrier (102, 526, 527) |
| | 01158700 | 1 | Drive Carrier (911099 s/n 892 & up; 911101 s/n 1360 & up; 911330 s/n 1772 & up; 911331 s/n 220 & up; 911514 s/n 25,000 & up; 911515 s/n 7,000 & up; 911525 s/n 17,000 & up; 911531 s/n 8,000 & up) |
| 15 | 01133500 | 1 | Hub, Friction Wheel (102, 526, 527) |
| | 01133500 | 1 | Hub, Friction Wheel (911099 s/n 892 & up; 911101 s/n 1360 & up; 911330 s/n 1772 & up; 911331 s/n 220 & up; 911514 s/n 25,000 & up; 911515 s/n 7,000 & up; 911525 s/n 17,000 & up; 911531 s/n 8,000 & up) |
| | 01242900 | 1 | Hub, Friction Wheel (911099 s/n 892 & up; 911101 s/n 1360 & up; 911330 s/n 1772 & up; 911331 s/n 220 & up; 911514 s/n 25,000 & up; 911515 s/n 7,000 & up; 911525 s/n 17,000 & up; 911531 s/n 8,000 & up) |
| 16 | 01139700 | 1 | Idler Shaft |
| 17 | 03248300 | 1 | Disc, Friction |
| 18 | 05947900 | 3 | Bolt, Hex .25-20 x .50 Grade 5 |
| 19 | 05800500 | 2 | Pin, Roll .188 x .88 |
| 20 | 01240100 | 1 | Shaft, Hex |
| 21 | 01125100 | 1 | Rod, Guide |
| 22 | 06421600 | 1 | Washer, Flat Steel 1.390 x 2.00 x .020 |

FRICTION WHEEL AND DRIVE

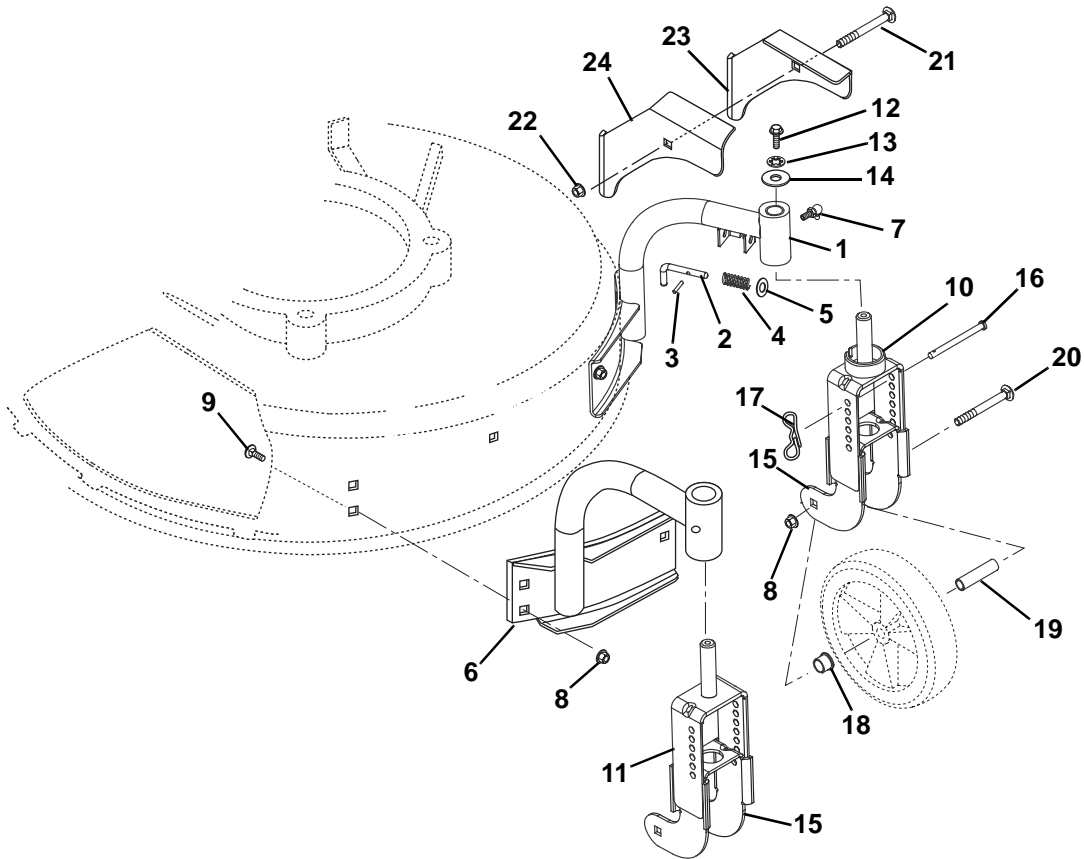
Model 911099, 101, 102, 330, 331, 514, 515, 525, 526, 527, 531

| Item | Part No. | Qty. | Description |
|------|----------|------|---|
| 23 | 02215300 | 2 | Push Nut .25 |
| 24 | 05803500 | 2 | Pin, Roll .125 x .50 |
| 25 | 01124200 | 2 | Shift Link |
| 26 | 01123600 | 1 | Shift Arm Weldment |
| 27 | 01125000 | 1 | Retainer Plate |
| 28 | 51108900 | 1 | Kit, LM Drive Carrier (Includes Items 1 - 27) |
| 29 | 06437200 | 2 | Washer, Flat Steel .344 x .688 x .065 |
| 30 | 01153800 | 2 | Thrust Plate (911099 s/n 101-891; 911101 s/n 101-1359; 911330 s/n 101-1771; 911331 s/n 101-219; 911514 s/n 19,501-24,999; 911515 s/n 5,001-6,999; 911525 s/n 7,001-16,999; 911531 s/n 101-7,999) |
| 31 | 07412100 | 4 | Screw, Tapping 10-24 x .375 Hex Washer Head (911099 s/n 101-891; 911101 s/n 101-1359; 911330 s/n 101-1771; 911331 s/n 101-219; 911514 s/n 19,501-24,999; 911515 s/n 5,001-6,999; 911525 s/n 7,001-16,999; 911531 s/n 101-7,999) |
| 32 | 01153900 | 1 | Guide, Plate (911099 s/n 101-891; 911101 s/n 101-1359; 911330 s/n 101-1771; 911331 s/n 101-219; 911514 s/n 19,501-24,999; 911515 s/n 5,001-6,999; 911525 s/n 7,001-16,999; 911531 s/n 101-7,999) |
| 33 | 51102500 | 1 | Friction Wheel Assembly (911099 s/n 101-891; 911101 s/n 101-1359; 911330 s/n 101-1771; 911331 s/n 101-219; 911514 s/n 19,501-24,999; 911515 s/n 5,001-6,999; 911525 s/n 7,001-16,999; 911531 s/n 101-7,999) |
| 34 | 06529800 | 3 | Nut, Locking Center .31-18 |
| 35 | 06439100 | 1 | Washer, Flat Steel .38 x .87 x .179 |
| 36 | 01127300 | 1 | Friction Sheave |
| 37* | 05435100 | 2 | Bearing, Ball .625 x 1.375 x .43 |
| 38 | 06420200 | 1 | Washer, Flat Steel 1.062 x 1.344 x .032 |
| 39 | 01127400 | 1 | Spindle, Bearing |
| 40 | 01127500 | 1 | Bearing, Retainer |
| 41 | 06220200 | 1 | Bolt, Round Head Square Neck .31-18 x 1.75 Grade 5 |
| 42 | 05711900 | 2 | Ring, Retaining External .579 x .930 |
| 43 | 06212200 | 2 | Bolt, Round Head Square Short Neck .31-18 x .62 |
| 44 | 01161951 | 1 | Pivot Channel Weldment |
| 45 | 08325200 | 1 | Spring, Tension .051 x .60 x 2.25 |
| 46 | 51102400 | 1 | Differential Assembly |
| 47 | 01135100 | 1 | Retainer |
| 48* | 05408000 | 1 | Bearing, Ball .50 x 1.38 x .437 |
| 49 | 01131700 | 1 | Idler Gear |
| 50 | 06425300 | 1 | Washer, Flat Steel .531 x 1.00 x .063 |
| 51 | 05706200 | 1 | Ring, Retaining External 1.00 x .042 (102, 526, 527) |
| | 05706200 | 1 | Ring, Retaining External 1.00 x .042 (911099 s/n 892 & up; 911101 s/n 1360 & up; 911330 s/n 1772 & up; 911331 s/n 220 & up; 911514 s/n 25,000 & up; 911515 s/n 7,000 & up; 911525 s/n 17,000 & up; 911531 s/n 8,000 & up) |
| 52 | 06441100 | 2 | Washer, Flat Steel .520 x .827 x .062 |
| 53 | 01121051 | 1 | Gear Cover |
| 54* | 05417600 | 1 | Bearing, Ball .625 x 1.383 x .50 (102, 526, 527) |
| 55 | 05705900 | 1 | Ring, Retaining External .438 x .035 |
| 56 | 07411900 | 3 | Screw, Tapping 12-24 x .50 Hex Washer Head |

* Available as individual components or part of 51105600 Service Kit which consists of (2) 05435100, (1) 05408000, (2) 05413700 and (2) 05417600.

SWIVEL WHEELS AND BRACKETS

Model 911101, 330, 525

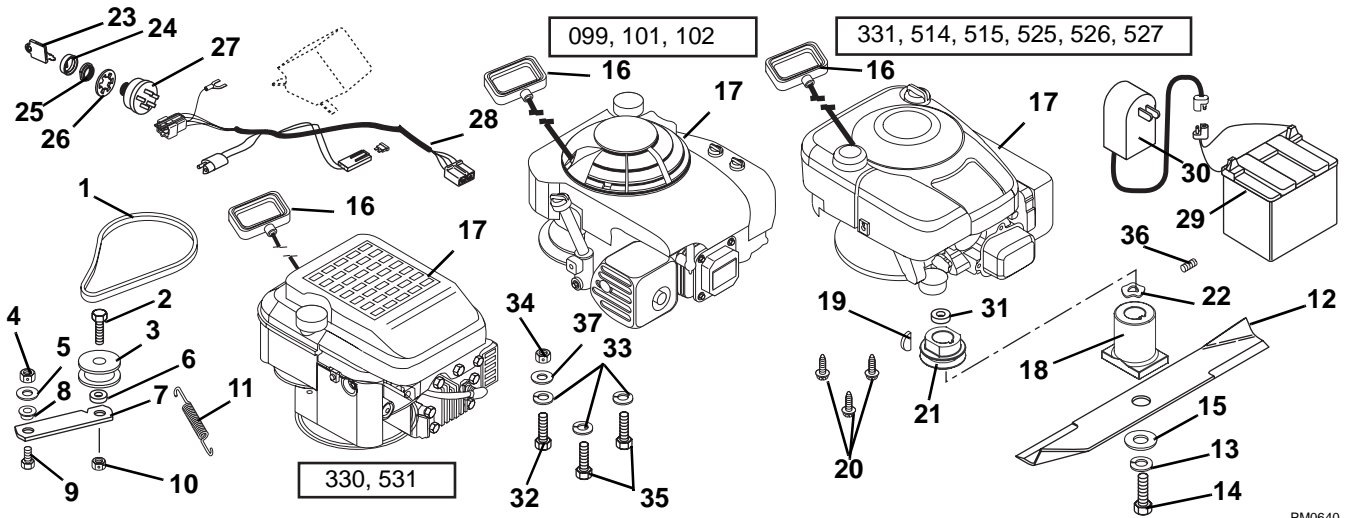


PM0620

| Item | Part No. | Qty. | Description |
|------|----------|------|--|
| 1 | 01196859 | 1 | Assembly, Mount Left Hand With Bushings |
| 2 | 01196900 | 1 | Pin, Lockout |
| 3 | 05808100 | 1 | Pin, Roll .094 x .70 |
| | 05801000 | 1 | Pin, Roll .094 x .50 |
| 4 | 08337300 | 1 | Spring, Compression - Swivel Lockout |
| 5 | 06437300 | 1 | Washer, Flat Steel .281 x .62 x .065 |
| 6 | 01197559 | 1 | Assembly, Right Hand Mount With Bushings |
| 7 | 07012600 | 2 | Fitting, Lube .25-28 x .256 |
| 8 | 06530400 | 8 | Nut, Spin Lock Flange .312-18 |
| 9 | 06222000 | 6 | Bolt, Round Head Square Neck .31-18 x .50 Grade 5 |
| 10 | 01196759 | 1 | Yoke, Left Hand Outer |
| 11 | 01197459 | 1 | Yoke, Right Hand Outer |
| 12 | 05946800 | 2 | Bolt, Hex .25-20 x .75 Grade 5 |
| 13 | 06308400 | 2 | Washer, Locking .25 x .062 Regular |
| 14 | 06426600 | 2 | Washer, Flat Steel .28 x 1.00 x .063 |
| 15 | 01196600 | 2 | Yoke, Inner |
| 16 | 06817100 | 2 | Pin, Height Adjustment |
| 17 | 06700001 | 2 | Pin, Bow Tie Locking Cotter |
| 18 | 05502100 | 2 | Bushing, Flange .50 x .625 x .50 x .75 |
| 19 | 05533500 | 2 | Spacer, Wheel |
| 20 | 06212300 | 2 | Bolt, Round Head Square Neck .31-18 x 2.75 |
| 21 | 06222300 | 1 | Bolt, Round Head Square Neck .25-20 x 1.50 Grade 5 |
| 22 | 06530100 | 1 | Nut, Locking Flange .25-20 |
| 23 | 01197359 | 1 | Bracket, Hood Cable Left Hand |
| 24 | 01198159 | 1 | Bracket, Hood Cable Right Hand |

ENGINE, BLADE AND BELT

Model 911099, 101, 102, 330, 331, 514, 515, 525, 526, 531

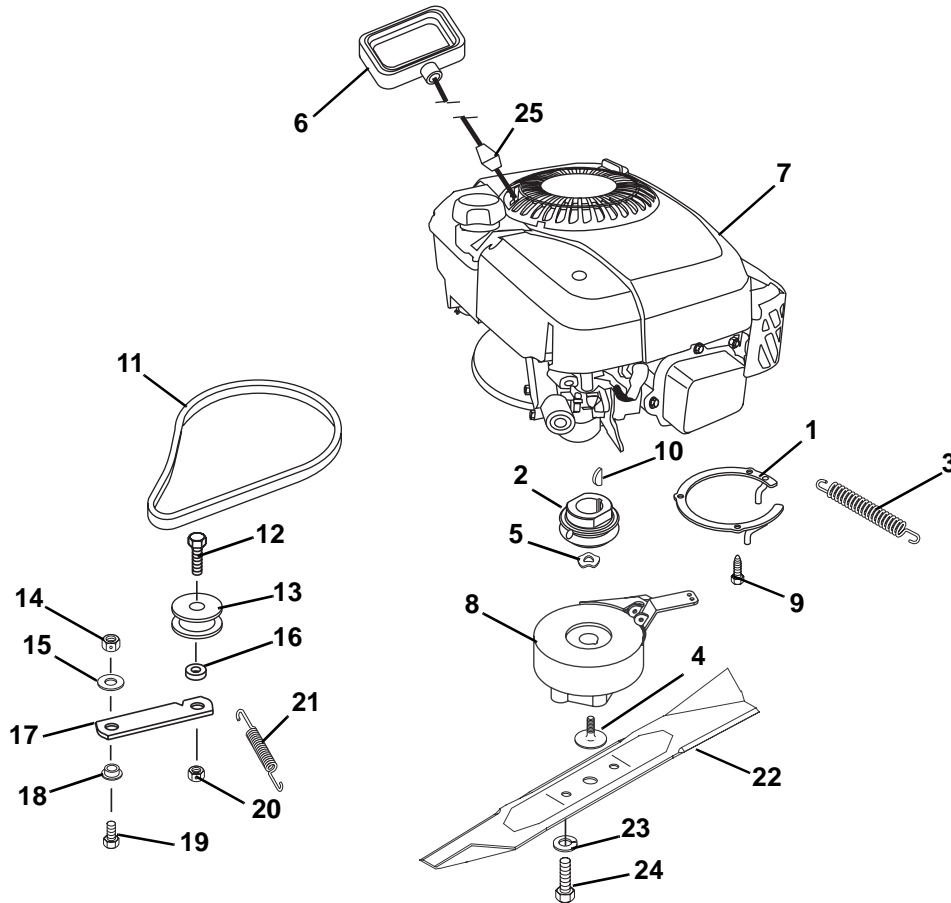


PM0640

| Item | Part No. | Qty. | Description |
|------|----------|------|--|
| 1 | 07217100 | 1 | V-Belt 3L Section |
| 2 | 05962800 | 1 | Bolt, Hex .44-14 x 1.50 Grade 5 |
| 3 | 07313300 | 1 | Idler, Flat 1.75 x .47 |
| 4 | 06529800 | 4 | Nut, Locking Center .31 -18 |
| 5 | 06437200 | 1 | Washer, Flat Steel .344 x .688 x .065 |
| 6 | 05533300 | 1 | Bushing, Sleeve .469 x .75 x .43 |
| 7 | 01141200 | 1 | Idler Arm |
| 8 | 05515400 | 1 | Bushing, Flange .325 x .501 x .250 x 1.120 |
| 9 | 05947000 | 1 | Bolt, Hex .31-18 x .75 Grade 5 |
| 10 | 06536400 | 1 | Nut, Locking Center .44-14 |
| 11 | 08321100 | 1 | Spring, Tension .043 x .44 x 3.31 |
| 12 | 01176700 | 1 | Blade, 21" LM Mulching |
| | 01137000 | 1 | Blade, 21" Mower (102) |
| | 01182400 | AR | Blade, 21" Mower Tungsten (102) |
| 13 | 06308800 | 1 | Washer, Locking .38 x .094 |
| 14 | 05976600 | 1 | Bolt, Hex .38-24 x 2.00 Grade 8 |
| 15 | 06441700 | 1 | Washer, Flat Steel .390 x 1.50 x .125 |
| 16 | 01157100 | 1 | Recoil Start Handle |
| 17 | 08268700 | 1 | Engine, Briggs & Stratton Quantum 6.5HP (330, 531) |
| | 08266100 | 1 | Engine Briggs & Stratton Intek Pro 6.75 (526) |
| | 08269700 | 1 | Engine, Briggs and Stratton 6.75HP Intek OHV Recoil (514, 525) |
| | 08245800 | 1 | Engine, Briggs and Stratton 6.75HP Intek OHV Electric Start (331, 515) |
| | 08270800 | 1 | Engine, Honda 5.5 HP OHC (099, 101) |
| | 08270500 | 1 | Engine, Honda 5.5 HP OHV (102) |
| 18 | 09733200 | 1 | Adapter, Blade |
| | 09733300 | 1 | Adapter, Blade (102) |
| 19 | 06600900 | 1 | Key, Woodruff .156 x .625 x .25 SAE #6 (099, 101, 330, 331, 514, 515, 525, 526, 531) |
| 20 | 07414100 | 3 | Screw, Tapping .38-16 x 1.00 Hex Washer Head |
| 21 | 09733100 | 1 | Pulley, Sintered Iron (099, 101, 331, 514, 515, 525, 526, 531) |
| | 09733400 | 1 | Pulley- Universal Drive- Steel (102) |
| 22 | 01192900 | 1 | Washer, Wave .885 x 1.311 x .125 (099, 101, 330, 331, 514, 515, 525, 526, 531) |
| 23 | 02460700 | 1 | Key with Cap (331, 515) |
| 24 | 07517700 | 1 | Cap, Ignition Switch (331, 515) |
| 25 | 06517300 | 1 | Nut, Panel .625-32 (331, 515) |
| 26 | 06306900 | 1 | Washer, Locking Internal .625 x .045 (331, 515) |
| 27 | 01190600 | 1 | Switch, Key Electric Start-LM (331, 515) |
| 28 | 01198000 | 1 | Harness, Wire (331, 515) |
| 29 | 01178400 | 1 | Battery (331, 515) |
| 30 | 01126000 | 1 | Charger, Battery (515) |
| | 01241700 | 1 | Charger, Battery 220 V (331) |
| 31 | 05500002 | 1 | Spacer, .875 x 1.125 x .551 (099, 101) |
| 32 | 05963500 | 3 | Bolt, Hex .31-24 x 1.50 Grade 5 (102) |
| 33 | 06308600 | 1 | Washer, Locking .31 x .078 Regular (102) |
| 34 | 06529500 | 1 | Nut, Hex .312-24 (102) |
| 35 | 05963600 | 2 | Bolt Hex .31-24 x 1.00 Grade 5 (102) |
| 36 | 06005500 | 2 | Screw-Set .31-18 x .38 Socket Head (102) |
| 37 | 06437200 | 1 | Washer-Flat-Steel .344 x .688 x .065 (102) |

ENGINE-BBC

Model 911527

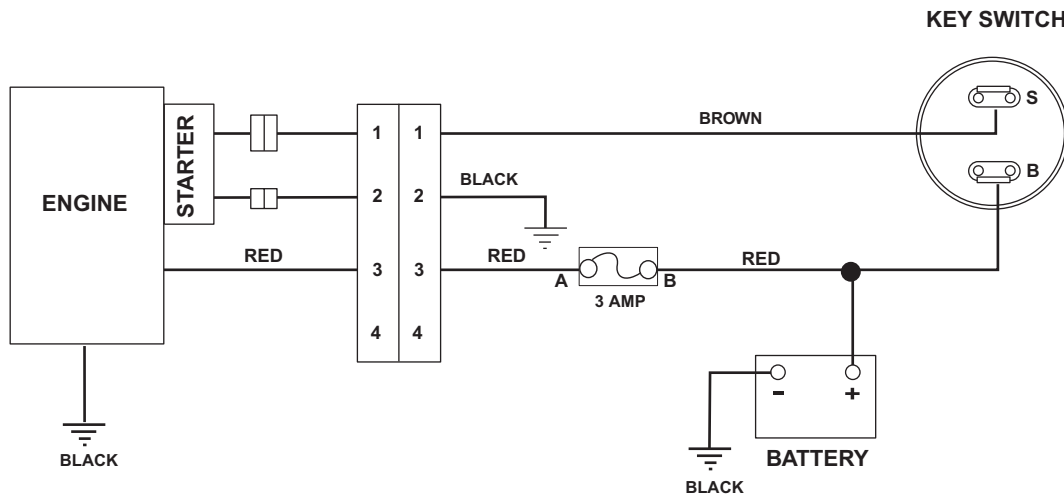


PM0451

| Item | Part No. | Qty. | Description |
|------|----------|------|--|
| 1 | 01192159 | 1 | Bracket, Spring Retainer |
| 2 | 09733100 | 1 | Pulley |
| 3 | 08338000 | 1 | Spring, Tension .1278 x .735 x 4.71 |
| 4 | 07063100 | 1 | Screw, Socket Head Special .375-24 x 1.50 |
| 5 | 01192900 | 1 | Washer, Wave .88 x 1.31 x .125 |
| 6 | 01157100 | 1 | Recoil Start Handle |
| 7 | 08200002 | 1 | Engine, Briggs and Stratton Intek Pro Blade Brake/Clutch |
| 8 | 01191600 | 1 | Blade Brake Clutch |
| 9 | 07414100 | 3 | Screw, Tapping .38-16 x 1.00 Hex Washer Head |
| 10 | 06600900 | 1 | Key, Woodruff .156 x .625 x .25 |
| 11 | 07217100 | 1 | V-Belt 3L Section |
| 12 | 05962800 | 1 | Bolt, Hex .44-14 x 1.50 Grade 5 |
| 13 | 07313300 | 1 | Idler, Flat 1.75 x .47 |
| 14 | 06529800 | 1 | Nut, Locking Center .31 -18 |
| 15 | 06437200 | 1 | Washer, Flat Steel .344 x .688 x .065 |
| 16 | 05533300 | 1 | Bushing, Sleeve .469 x .750 x .430 |
| 17 | 01141200 | 1 | Idler Arm |
| 18 | 05515400 | 1 | Bushing, Flange .325 x .501 x .250 x 1.120 |
| 19 | 05947000 | 1 | Bolt, Hex .31-18 x .75 Grade 5 |
| 20 | 06536400 | 1 | Nut, Locking Center .44-14 |
| 21 | 08321100 | 1 | Spring, Tension .043 x .44 x 3.31 |
| 22 | 01200000 | 1 | 21" Mower Blade |
| 23 | 06309300 | 2 | Washer, Locking .44 x .109 Regular |
| 24 | 05943000 | 2 | Bolt, Hex M10 x 1.5 x 25 |
| 25 | 01177100 | 1 | Rope Stop |

ELECTRICAL AND CONTINUITY DIAGRAM

Model 911331, 515

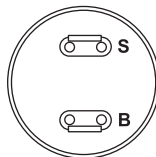


PM0470

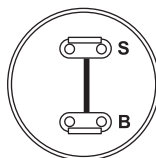
The diagram below shows the various states of connection for electrical components. The solid lines on switches show continuity.

NOTE: All switches are viewed from the rear.

Key Switch (01190600)



OFF POSITION



START POSITION

PM0480



Ariens Company
655 West Ryan Street
P.O. Box 157
Brillion, WI 54110-0157
920-756-2141
Fax 920-756-2407
www.ariens.com