

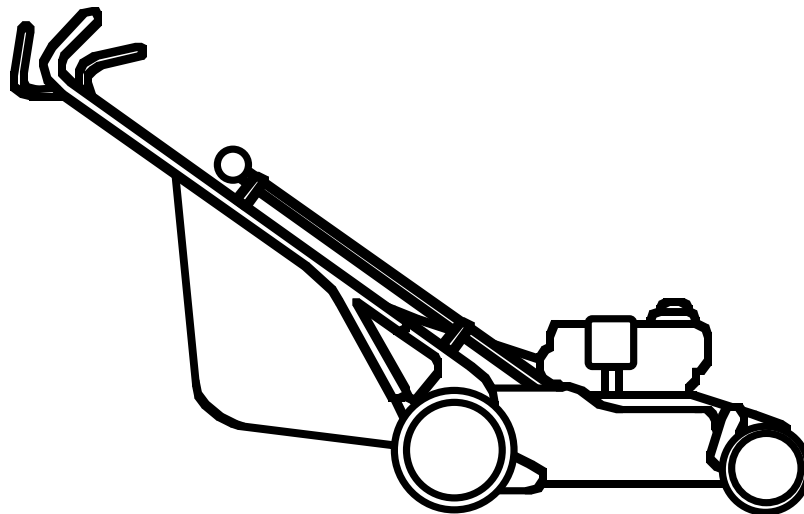
Ariens®

911

Series

Walk Behind
Lawn Mowers

Parts Manual



A Message to Ariens Parts Manual User

Your Ariens Dealer will be happy to supply any service or advice which may be required to keep your Ariens equipment operating at peak efficiency. He stocks genuine Ariens parts and lubricants, manufactured with the same precision and skill as the original equipment. His factory trained staff is kept well informed on the best methods of servicing Ariens equipment and is ready and able to serve you. If

engine repairs or services are required, they can be obtained from an Ariens Dealer or from an authorized engine manufacturer's service center. If service is required, be prepared to supply the service person with the Model Number and Serial Number of the equipment and engine, as well as a full description of the problem encountered.

Introduction

The information contained herein is intended for use by Ariens Dealer's trained servicemen and serves as a supplement to and reminder of training sessions conducted by Ariens Company. Before you attempt any repair, adjustment or maintenance project, be certain that you have read and fully understand the instructions in your Owner's and Repair Manuals. Understand and follow each Danger, Warning, Caution and all instructions exactly as given. Also be sure that you have all tools, replacement parts and other materials required to complete the project.

A network of Ariens Dealers and Distributors is maintained in order to assure you of an adequate supply of replacement parts and technical assistance. Your local Ariens Dealer is required to order parts through his distributor. When replacement parts are required, use only genuine Ariens parts. Failure to do so may result in product malfunction and possible injury to operator and/or bystander.

NOTE: The descriptions and specifications contained in this manual were in effect at the time the manual was approved for printing. Ariens Company reserves the right to discontinue models without notice and without incurring obligation. The equipment described within this manual may not be identified as either standard or optional and the various illustrations may not all be applicable to your particular unit. If you have questions, always check with your Ariens Dealer.

NOTE: All references to "Left", "Right", "Front" and "Rear" are given from operators position.

NOTE TO ARIENS DEALERS: Refer to your current Parts Price List for suggested parts stocking. Service training for dealers is available at the Ariens Service School. See your Ariens Distributor for the latest school schedule.

How to Order Replacement Parts

This Parts Manual is arranged for easy identification of genuine Ariens Service parts that are illustrated showing their relationship to one another. Item numbers in the illustrations correspond to item numbers in the first column of the parts list and are followed by the Ariens Part Number, Description and Quantity with variations between models and/or serial numbers designated in the part description. S/N 000000> means this serial number and up, with S/N <000000 meaning up to this serial number.

Order parts from your nearest authorized Ariens Dealer. For prompt service when ordering parts, provide the following information.

1. **MODEL AND SERIAL NUMBERS OF EQUIPMENT.**
2. **PART NUMBER (not Item Number).**
3. **DESCRIPTION**
4. **QUANTITY REQUIRED**

Contents

Decals.....2
 Handlebar and Controls.....4
 Mower Pan and Bag6
 Wheels and Adjusters.....8
 Swivel Wheels and Brackets10
 Friction Wheel Drive12
 Engine, Blade and Belt14
 Dethatcher16
 Mulchmaster Plug.....17
 Leaf Shredder.....17

This manual covers the models listed. Specific Model and Serial Numbers of your unit and attachment are on a label on the unit. Record these numbers in the space provided and use them whenever parts or service are required.

Model Number _____
Serial Number _____
Engine Number _____
Serial Number _____

NOTE: Most hardware descriptions are given in decimals. Refer to the following table to find the equivalent in fractions:

.125=1/8
.188=3/16
.250=1/4
.312=5/16
.375=3/8
.438=7/16
.500=1/2
.562=9/16
.625=5/8
.688=11/16
.750=3/4
.812=13/16
.875=7/8
.938=15/16

Models

Model 911044 (LM214sp)

4 Cycle Tecumseh Vector ® 5.5 HP
 Recoil, Self Propelled
 Serial Number 037501 and up

Model 911046 (LM217sp)

4 Cycle Tecumseh Vector ® 5.5 HP
 Electric Start, Self Propelled
 Serial Number 010001 and up

Model 911052 (LM216sp)

4 Cycle Tecumseh Vector ® 5.5 HP
 Recoil, Self Propelled
 Serial Number 022501 and up

Model 911060 (LM221)

4 Cycle Tecumseh Vector ® 5 HP
 Recoil, Push
 Serial Number 000101 and up

Model 911061 (LM222sp)

4 Cycle Tecumseh Ultra 6 HP
 Recoil, Self Propelled
 Serial Number 000101 and up

Model 911062 (MM211sp)

4 Cycle Tecumseh Premier ® 5 HP
 Recoil, Self Propelled
 Serial Number 000101 and up

Model 911064 (MM210)

4 Cycle Tecumseh Premier ® 4.5 HP
 Recoil, Push
 Serial Number 000101 and up

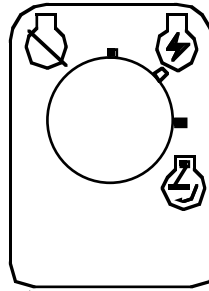
NOTE: For models 911304 through 911311 see pages 16 through 18.

Decals

Models 911044,046,052,060,061,062,064



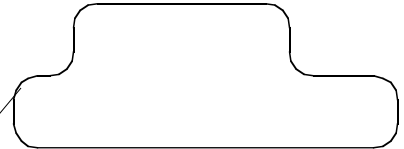
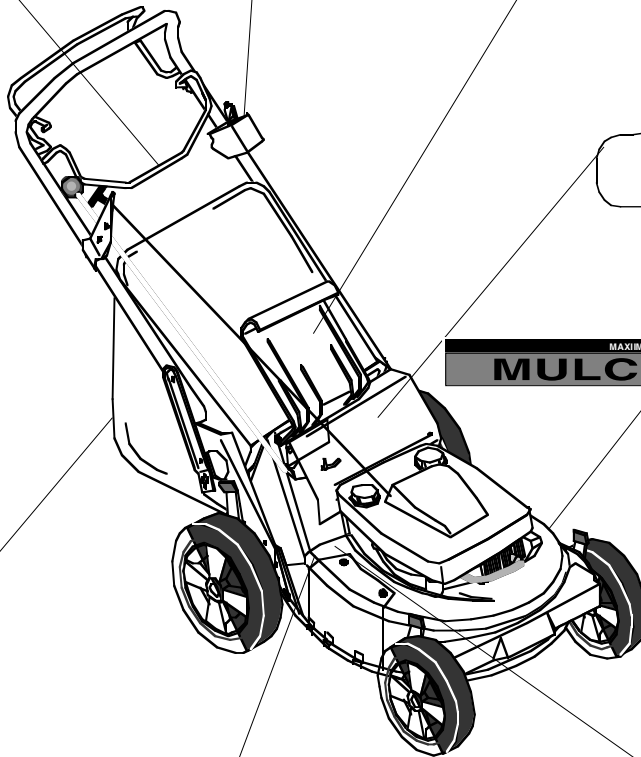
07761700



07760600
(911046)



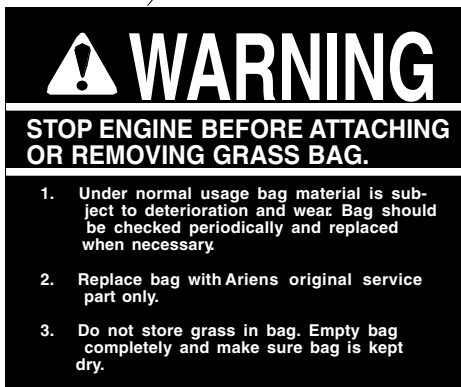
07759200



07708500
(911044,046,052,061,062)



07712300
(911062,064)



07893200



07893700



07874200

Decals

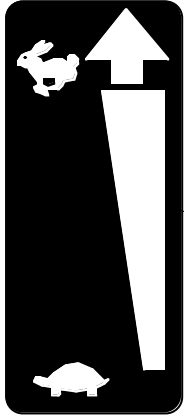
Models 911044,046,052,060,061,062,064

Engine Primer
Push to prime

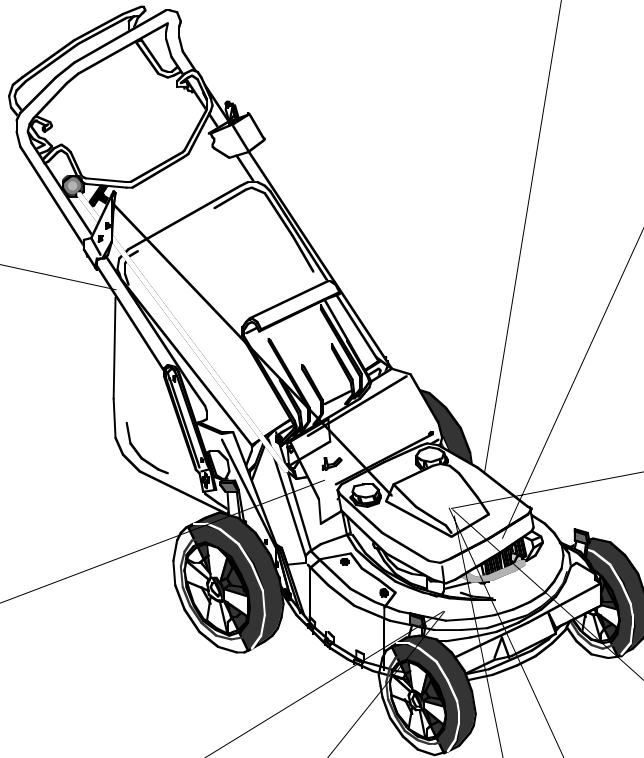
07860600



07708200
(911061)



07760700
(911044,46,52,61,62)



07708700
(911060,062)



07709000
(911044,46,52,61,62)



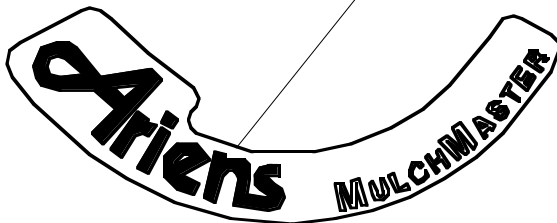
07708600
(911044,046,052)



07766100
(911044,46,52,60,61)



07708100
(911061)



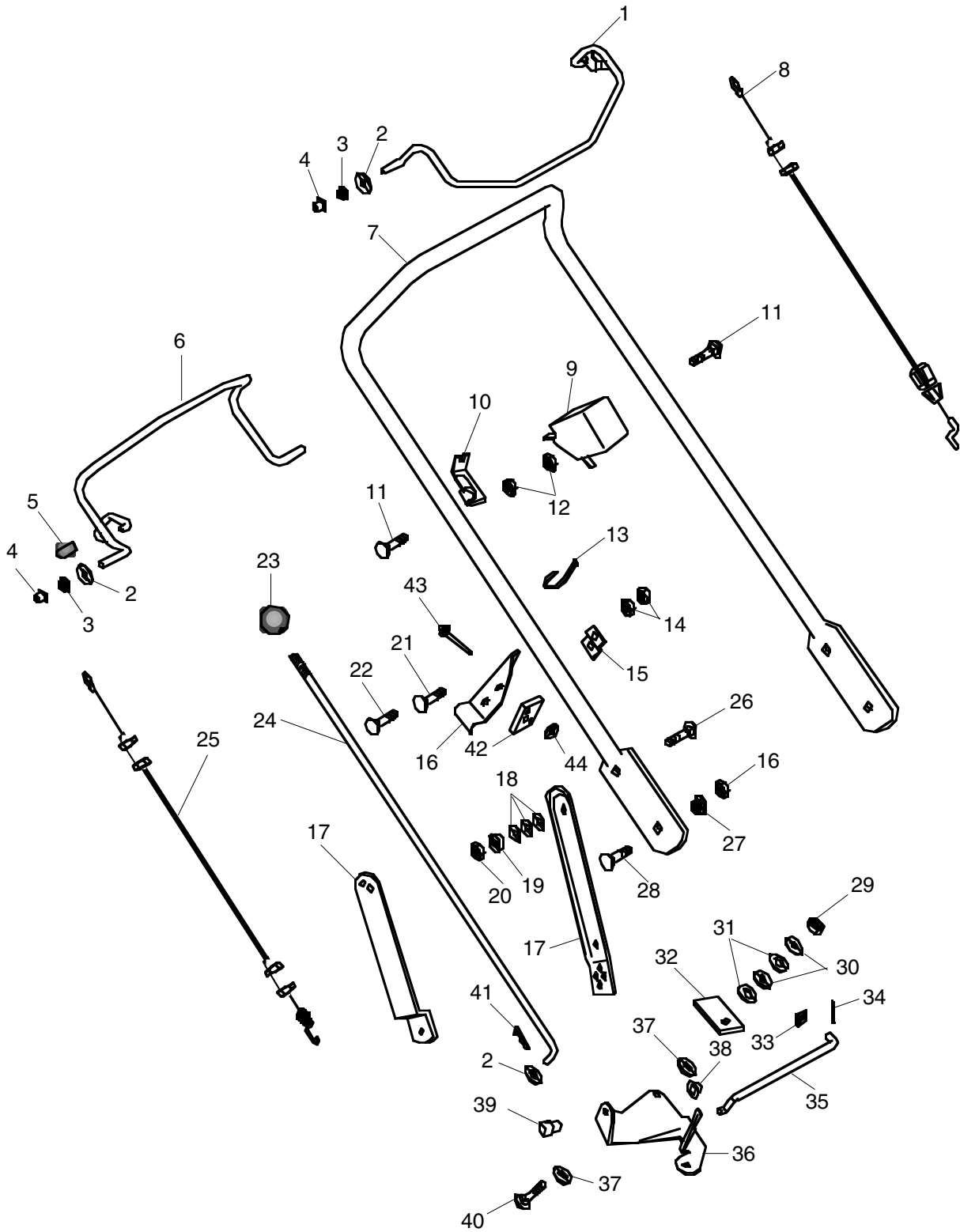
07708300
(911062,064)



07708800
(911064)

Handlebar and Controls

Models 911044,046,052,060,061,062,064



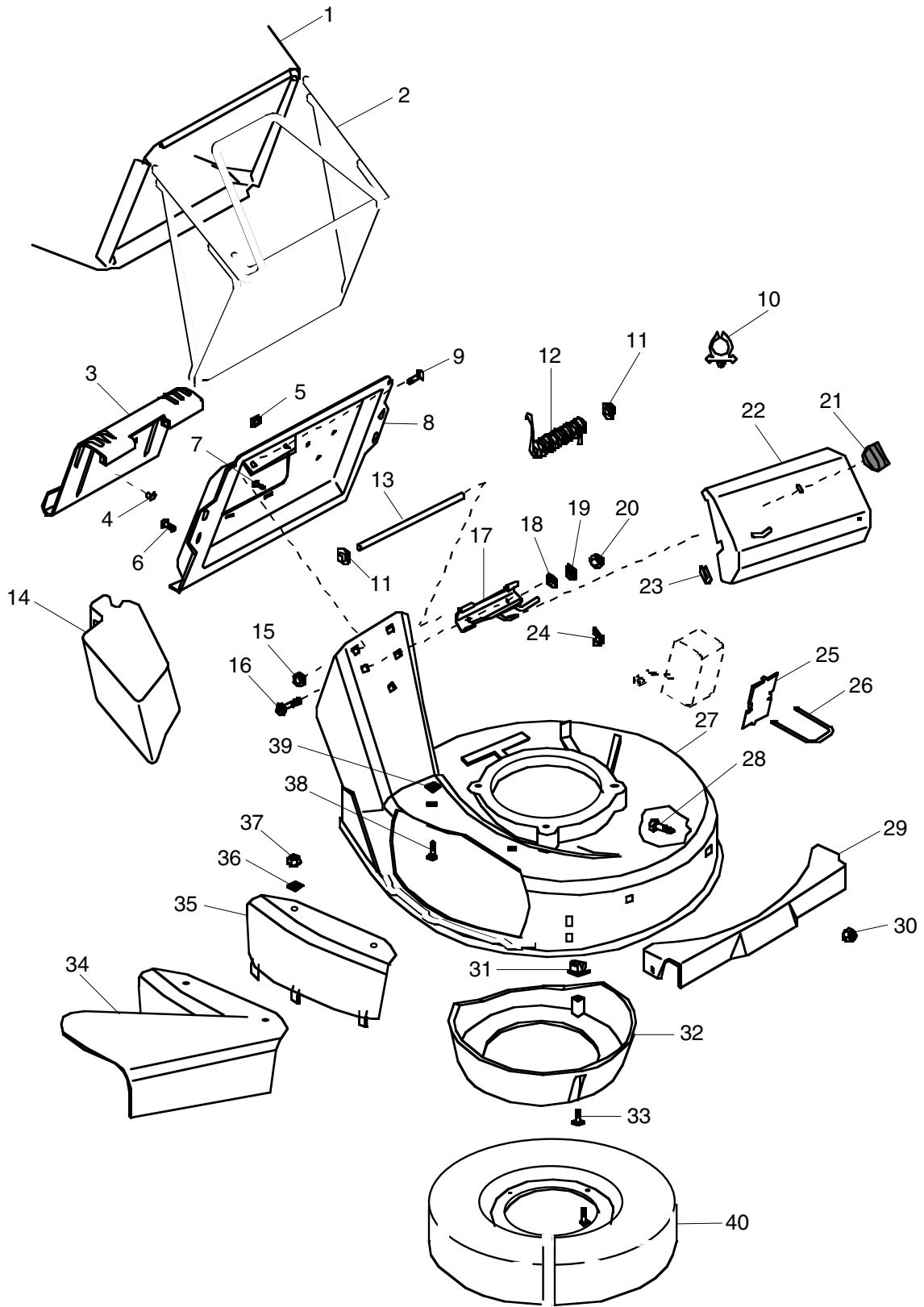
Handlebar and Controls

Models 911044,046,052,060,061,062,064

ITEM NO.	PART NO.	DESCRIPTION	QTY	ITEM NO.	PART NO.	DESCRIPTION	QTY
1	01103551	Start Control	1	22	06203900	Blt-Rdhdsqnk .20-20 x .38 Sht PI	1
2	06412300	Wshr-FI-Stl .344 x .688 x .065 PI	7	23	07515900	Knob (44,46,52,61,62)	1
3	05514500	Bshg-Flg .325 x .444 x .440 x .560	4	24	01140800	Speed Control Rod (44,46,52,61,62)	1
4	07008200	Nut-Push .312 Dia. Pal	4	25	06921200	Traction Cable (44,46,52,61,62)	1
5	07517000	Cap, Vinyl .25 I.D.	1	26	06209600	Blt-Rdhdsqnk .31-18 x 1.12 Gr 5 PI	2
6	01105400	Wheel Drive Control (44,46,52,61,62)	1	27	01305900	Shoulder Spacer	2
7	01138900	Handlebar (60,64)	1	28	06209500	Blt-Rdhdsqnk .31-18 x .87 Gr 5 PI	2
	01136900	Handlebar (44,46,52,61,62)	1	29	06503900	Nut-Lk .375-16 Gr A PI	1
8	06921100	Engine Control Cable	1	30	06404300	Wshr-FI-Stl .406 x .812 x .065 PI	2
9	01156400	Switch-Cable Anchor (46)	1	31	06300400	Wshr-Lock .375 x .115 Hvy PI	2
10	01137500	R.H. Cable Anchor (44,46,52,61,62)	1	32	01154800	Pressure Flange	1
	01155700	L.H. Cable Anchor	1	33	06412700	Wshr-FI-Stl .281 x .62 x .065 PI	2
11	06209400	Blt-Rdhdsqnk .25-20 x 1.25 Lg PI	1	34	06700300	Pin-Cotr .06 x .50	1
12	06509200	Nut-Keps .250-20	3	35	01126100	Shift Link (44,46,52,61,62)	1
13	07517300	Cable Tie	2	36	01123900	Speed Control Bell Crank (44,46,52,61,62)	1
14	06504000	Center Lock Nut	4	37	01123800	Friction Washer (44,46,52,61,62)	2
15	01141800	Bracket Brace	1	38	01019800	Cap	1
16	01137400	Speed Control Bracket	1	39	01139800	Swivel	1
17	01150000	L.H. Handlebar Adjust. Link (44,46,52,60,62,64)	1	40	06205600	Blt-Rdhdsqnk .38-16 x 1.50 PI	1
	01150100	R.H. Handlebar Adjust. Link (44,46,52,60,62,64)	1	41	06702000	Pin-Hair-Int .08 x .18 x 1.18	1
	01158600	Handlebar Brace (61)	2	42	01173800	Support Pad (44,46,52,61,62)	1
18	01149900	Belleville Washer (44,46,52,60,62,64)	6	43	06812300	Rvt .187 x .450 Dome Al Black (44,46,52,61,62)	2
19	05514900	Flange Bushing	2	44	06406800	Wshr-FI-Stl .194 x .492 x .047 PI (44,46,52,61,62)	2
20	06512400	Nut-Lk-Top .312-18 Gr C PI	2				
21	06211400	Blt-Rdhdsqnk .25-20 x 1.38 Sht PI	1				

Mower Pan and Bag

Models 911044,046,052,060,061,062,064



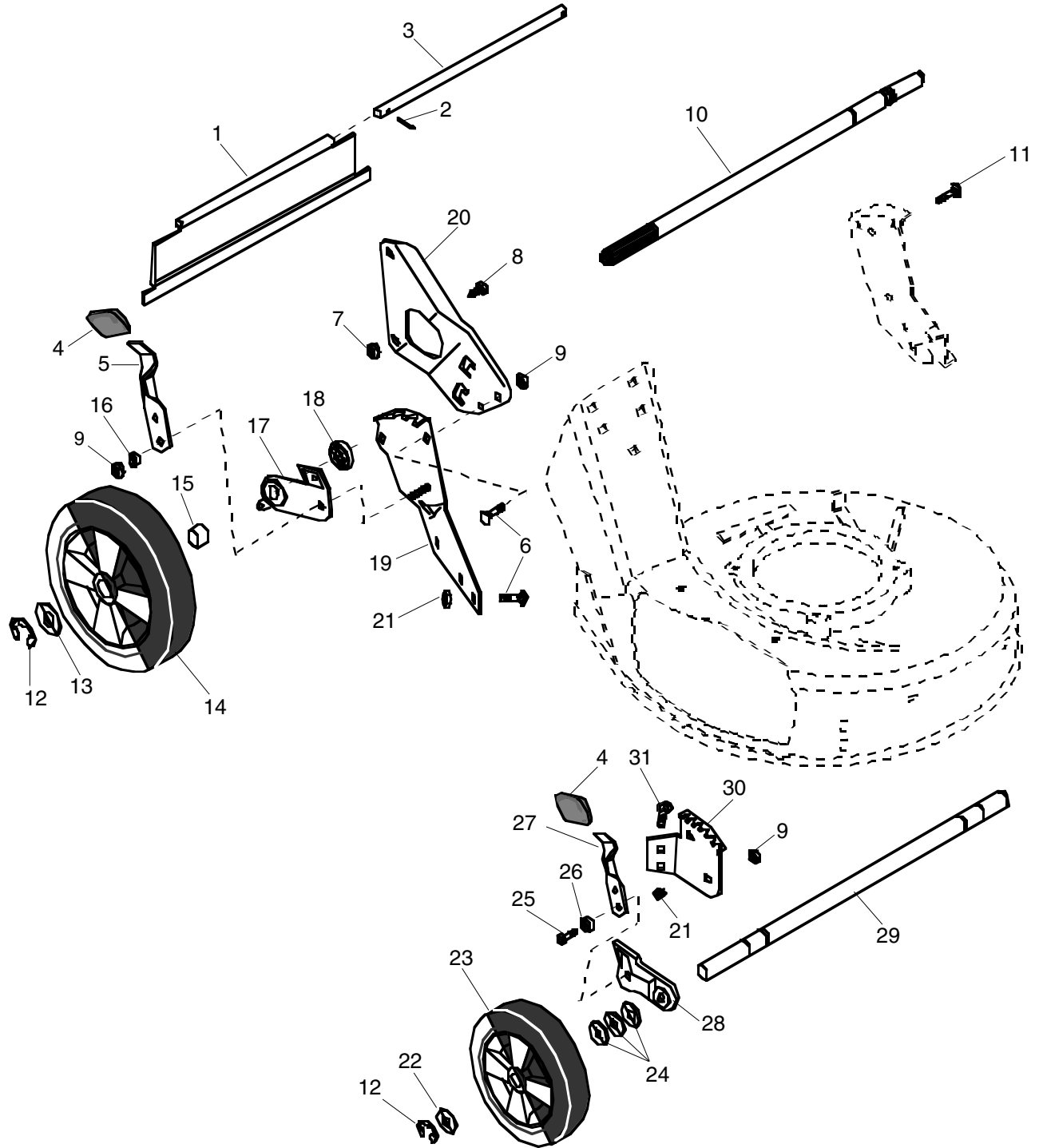
Mower Pan and Bag

Models 911044,046,052,060,061,062,064

ITEM NO.	PART NO.	DESCRIPTION	QTY.	ITEM NO.	PART NO.	DESCRIPTION	QTY.
1	01152100	Grass Bag (44,46,52,60,61)	1	27	51104200	21" Mower Pan w/Decals (60)	1
2	01138700	Bagger Frame (44,46,52,60,61)	1		51104300	21" Mower Pan w/Decals (44,46,52,61)	1
3	01136559	Rear Door	1		51105400	21" Mower Pan w/Decals (64)	1
4	07516000	Button Bumper	1		51105300	21" Mower Pan w/Decals (62)	1
5	07511800	Bumper	2	28	06200900	Blt-Rdhdsqnk .31-18 x .50	2
6	07404500	Scr-Tap 12-24 x .50 Hwh PI Tr	4	29	01153559	Front Panel (44,46,60,61,62,64)	1
7	07407900	Scr-Tap 10-24 x .375 Torx PI Tr	2	30	06504200	Nut-Lk .312-18 Gr A PI (44,46,60,61,62,64)	2
8	01159759	Catcher Plate	1		07507600	Plastic Grommet	3
9	06203900	Blt-Rdhdsqnk .25-20 x .38 Sht PI	2	31	07507600	Plastic Grommer (62,64)	6
10	01166500	Snap-In Clip (44,46,52,61,62)	1	32	01173700	Center Baffle (44,46,52,61,62,64)	1
11	02215300	Push Nut	2	33	07407400	Scr-Tap 20-16 x .62 SI Ph PI Ab (044,046,052,060,061)	3
12	08322400	Sg-Tors .120 x .68 x 3.09	1		07407400	Scr-Tap 20-16 x .62 SI Ph PI Ab (62,64)	6
13	01141000	Door Pin	1		01167600	Side Discharge Assembly (44,46,52,60,61)	1
14	71102700	Mulch Master Mulcher Accessory	1	34	01136400	Side Discharge Cover (44,46,52,60,61)	1
15	06505600	Nut-Lk-Flg .250-20 PI	2	35	06400200	Wshr-FI-Stl .38 x .875 x .083 PI (44,46,52,60,61)	2
16	06201700	Blt-Rdhdsqnk .25-20 x .62 PI	2	36	06506200	Nut-Lk-Nyl .312-18 PI (44,46,52,60,61)	2
17	01138259	Hinge Base (60,64)	1	37	06203400	Blt-Rdhdsqnk .31-18 x .75 Sht PI (44,46,52,60,61)	2
	01155559	Hinge Base (44,46,52,61,62)	1	38	06514900	Nut-Push .312 (44,46,52,60,61)	2
18	06404400	Wshr-FI-Stl .38 x .875 x .179 PI	1	39	01171800	Mulchmaster Dome Insert (62,64)	1
19	06300200	Wshr-Lock .250 x .007 Hvy PI	2	40			
20	06503200	Nut .250-20 PI	2				
21	01159300	Wing Nut (44,46,52,61,62)	1				
22	01158800	Drive Cover (44,46,52,62)	1				
	01172500	Drive Cover (61)	1				
23	01155400	Trim Bumper (44,46,52,61,62)	2				
24	06515700	Nut-Wing 8-32 (46)	2				
25	01159100	Battery Plate (46)	1				
26	01159200	U-Bolt (46)	1				

Wheels and Adjusters

Models 911044,046,052,060,061,062,064



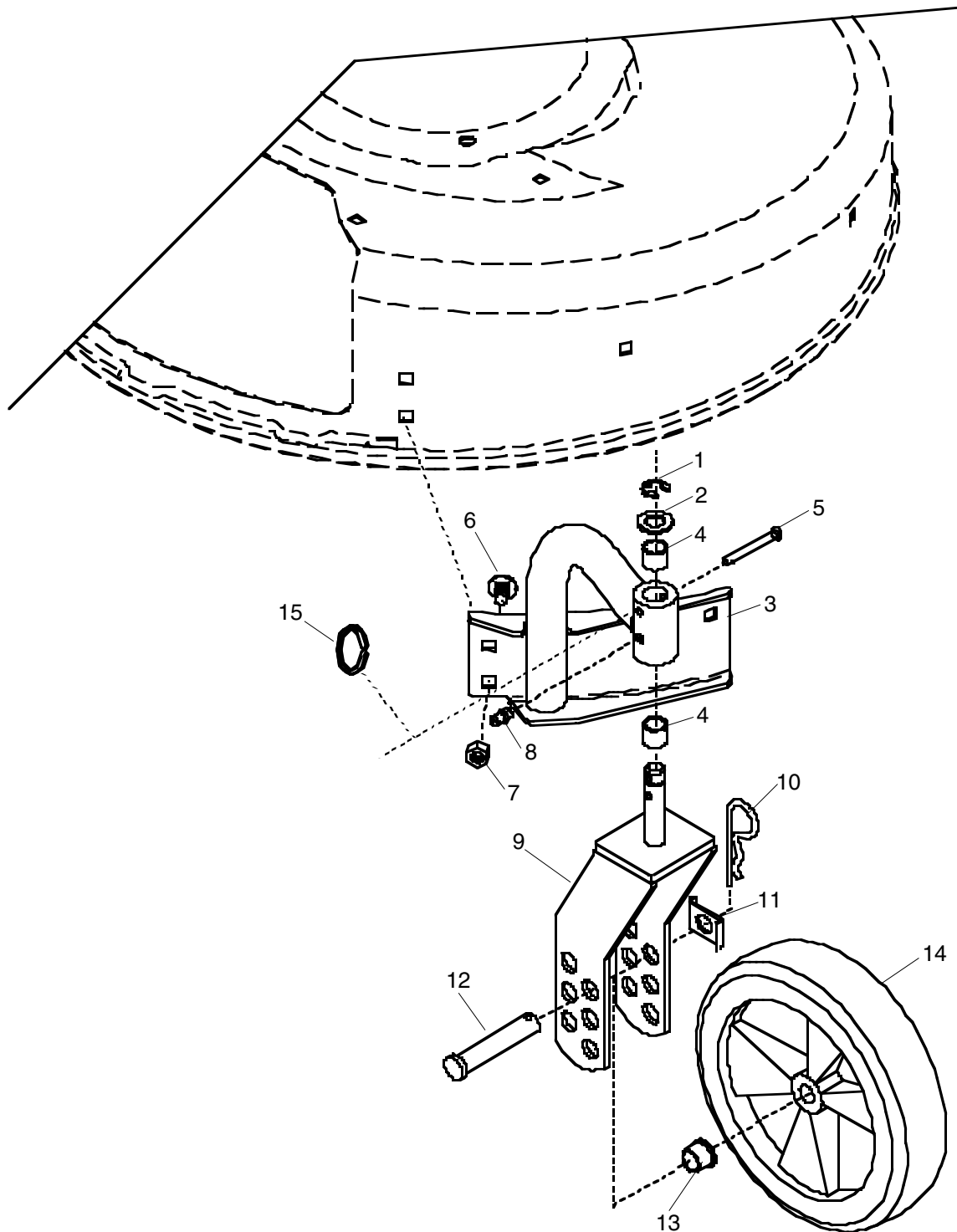
Wheels and Adjusters

Models 911044,046,052,060,061,062,064

ITEM NO.	PART NO.	DESCRIPTION	QTY	ITEM NO.	PART NO.	DESCRIPTION	QTY
1	07516800	Rear Protective Guard, Push (60,64)	1	18	05417600	Brg-Ball .625 x 1.382 x .50 (61)	1
	07516900	Rear Protective Guard, S.P. (44,46,52,61,62)	1	19	01154200	Rear Quadrant L.H.	1
2	06700300	Pin-Cotr .06 x .50 (60,64)	2		01154300	Rear Quadrant R.H.	1
	06700300	Pin-Cotr .06 x .50 (44,46,52,61,62)	3	20	01137200	RH Handlebar Mtg Brkt	1
					01137100	LH Handlebar Mtg Brkt	1
3	01140000	Rod	1	21	06507800	Nut-Flg .312-18 PI	12
4	07513600	Knob	4	22	06405600	Wshr-FI-Stl .505 x .808 x .072 PI	8
5	01130600	Height Adjustment Lever	2	23	07120100	Wheel (44,46,52,60,61,62)	2
6	06203300	Blt-Rdhdsqnk .312-18 x .62 Sht PI	9		07138000	Tire 7 x 1.50 (64)	2
				24	06418000	Wshr-FI-Stl .520 x .827 x .062 PI	8
7	06506000	Nut-Lk-Jam-Ctr .375-16 PI	2	25	05903400	Blt-Hex .31-18 x .88 PI Gr 2	2
8	01167100	Handlebar Stud	2	26	05514800	Bshg-Flg .312 x .500 x .344 x .880	2
9	06504200	Nut-Lk .312-18 Gr A PI	10	27	01120000	Front Height Adjustment Lever (44,46,60,61,62,64)	2
10	01149500	Rear Axle (44,46,52,61,62)	1	28	01119800	Left Adjuster Bracket Assembly (44,46,60,61,62,64)	1
	01168800	Rear Axle, Push Mower (60)	1		01119900	Right Adjuster Bracket Assembly (44,46,60,61,62,64)	1
	01171900	Rear Axle Push Mower MM (64)	1				
11	06203100	Blt-Rdhdsqnk .31-18 x 1.0 Sht PI	1	29	01168900	Front Axle (44,46,60,61,62,64)	1
12	05710200	Rg-Rtng Ext .500 x .042	4	30	01154000	Front Quadrant, L.H. (44,46,60,61,62,64)	1
13	05405600	Brg-Ring 1.40 x 1.79 x .078	2		01154100	Front Quadrant, R.H. (44,46,60,61,62,64)	1
14	07105100	Whl (60)	2	31	06200900	Blt-Rdhdsqnk .31-18 x .50	2
	07106100	Whl (44,46,52,61,62)	1				
	07106300	Whl (44,46,52,61,62)	1				
	07138100	Tire 10 x 1.75 (64)	2				
	07103900	10 1/2 Tire Skin	2				
15	01149700	Spacer Tube, Push LH (60,64)	1				
	01149800	Spacer Tube Push RH (60,64)	1				
	01149600	Spacer Tube, Self Propel (44,46,52,61,62)	1				
16	05514800	Bsh-Flg .312 x .500 x .344 x .880	2				
17	01131300	Rear Bracket and Bearing Assem (60)	1				
	01150400	Rear Bracket and Bearing Assy (44,46,52,62)	1				
	01158100	R.H. Rear Adjustor Bracket (61)	1				
	01131200	Rear Bracket & Bearing Assy (60)	1				
	01130700	Rear Adjustment Bracket (44,46,52,62)	1				
	01158200	L.H. Rear Adjustor Bracket (61)	1				

Swivel Wheels and Brackets

Model 911052



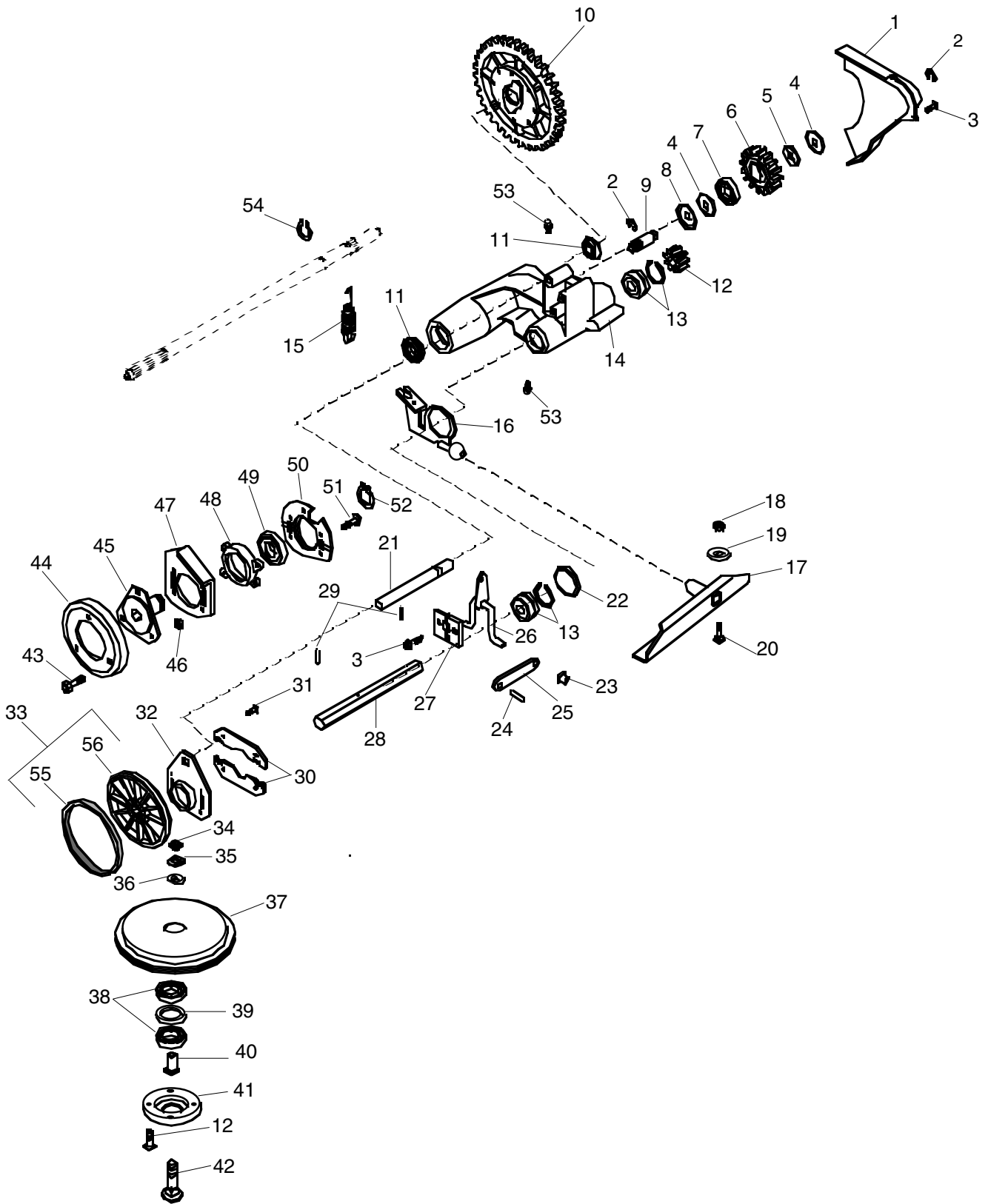
Swivel Wheels and Brackets

Model 911052

ITEM NO.	PART NO.	DESCRIPTION	QTY.	ITEM NO.	PART NO.	DESCRIPTION	QTY.
1	05712500	Rg-Rtng-Ext .480 x .042	2	8	07012600	Ftg-Lube .25-28 x .256	2
2	06403900	Wshr-FI-Stl .630 x 1.005 x .062 PI	2	9	01169300	Wheel Yoke Weldment	2
3	01169400	Right Mount Arm Weldment	1	10	06702200	Pin-Hair Int .14 x .43 x 2.75	2
	01169500	Left Mount Arm Weldment	1	11	01168100	Axle Tab	2
4	05504700	Bshg-Slv .625 x .750 x .500 Br	4	12	01168300	Clevis Pin	2
5	06811500	Pin-Clev .25 x 1.75	2	13	05502100	Bshg-Flg .500 x .625 x .500 x .750	2
6	06200900	Blt-Rdhdsgnk .31-18 x .50	6	14	07120100	Wheel	2
7	06507800	Nut-Flg. .312-18 PI	6	15	01169200	Kickout Ring	2

Friction Wheel Drive

Models 911044,046,052,061,062



Friction Wheel Drive

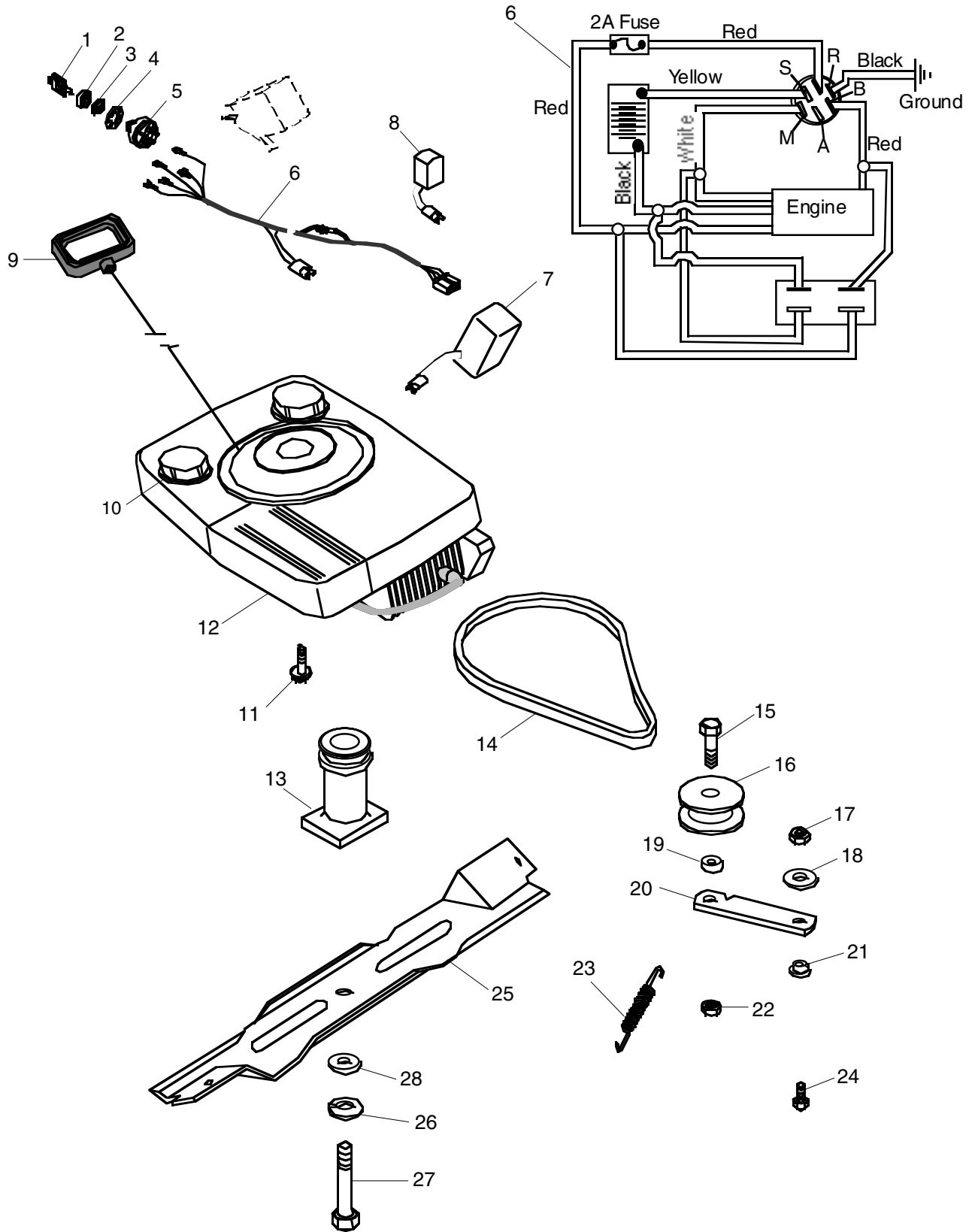
Models 911044,046,052,061,062

ITEM NO.	PART NO.	DESCRIPTION	QTY.	ITEM NO.	PART NO.	DESCRIPTION	QTY.
1	01121000	Gear Cover	1	29	05800500	Pin-Roll .188 x .88	2
2	05705900	Rg-Rtng-Ext .438 x .035	2	30	01153800	Thrust Plate	2
3	07404500	Scr-Tap 12-24 x .50 Hwh PI Tr	9	31	07405400	Scr-Tap 10-24 x .375 Hwh PI Tr	4
4	06418000	Wshr-FI-Stl .520 x .827 x .062 PI	2	32	01153900	Guide Plate	1
5	06405600	Wshr-FI-Stl .505 x .880 x .072 PI	1	33	51102500	Friction Wheel Assembly	1
6	01131700	Idler Gear	1	34	06501500	Nut-Hex .312-18	1
7 *	05408000	Brg-Ball .50 x 1.38 x .437	1	35	06300300	Wshr-Lock .312 ID Heavy PI	1
8	01135100	Retainer	1	36	06409000	Wshr-FI-Stl .328 x .875 x .062 PI	1
9	01139700	Idler Stud	1	37	01127300	Friction Sheave	1
10	51102400	Differential Assembly	1	38 *	05403900	Brg-Ball .625 x 1.375 x .44	2
11 *	05417600	Brg-Ball .625 x 1.38 x .50	2	39	06420200	Wshr-FI-Stl 1.062 x 2.500 x .032 PI	1
12	02201100	Pinion Gear	1	40	01127400	Spindle Bearing	1
13 *	05413700	Brg-Ball .562 x 1.315 x .437	2	41	01127500	Retainer Bearing	1
14	01140600	Drive Mount	1	42	06203600	Blt-Rdhdsqnk .31-18 x 1.75 PI	1
15	08325200	Sg-Tens .051 x .60 x 2.25 Wld 7.0	1	43	05902800	Blt-Hex .25-20 x .50 PI Gr 2	3
16	01137900	Drive Actuator Weldment	1	44	02201300	Friction Wheel (61)	1
17	01161959	Channel Weldment	1	45	01133500	Friction Wheel Hub (61)	1
18	06504200	Nut-Lk .312-18 Gr A PI	2	46	06504000	Nut-Lk-Ctr .250-20 PI	3
19	06412300	Wshr-FI-Stl .344 x .688 x .065 PI	2	47	01132700	Bearing Plate	1
20	06203300	Blt-Rdhdsqnk .312-18 x .62 Sht PI	2	48	01131800	Bearing Retainer (61)	1
21	01125100	Rod Guide	1	49	05405200	Bearing-Ball 1.0 x 2.0 x .56	1
22	06421600	Wshr-FI-Stl 1.390 x 2.00 x .020 PI	1	50	01119200	Bearing Retainer (61)	1
23	02215300	Push Nut	2	51	07407500	Taptite Ms-0.8 x 16MMH-FI-PI	4
24	05803500	Pin-Roll .125 x .50 (44,46,52,62)	2	52	05706200	Rg-Rtng-Ext 1.00 x .042	1
25	05804800	Pin Roll (61)	2	53	07012600	Zerks (61)	2
26	01124200	Shift Link	2	54	05701900	Rg-Rtng-Ext .625 x .035	3
27	01123600	Shift Arm Weldment	1	55	01154400	Friction Ring	1
28	01125000	Retainer Plate	1	56	01149200	Friction Wheel Hub	1
28	01125700	Hex Shaft	1				

* Available as individual components or part of 51105600 Service Kit which consists of (2) 05403900, (1) 05408000, (2) 05413700, and (2) 05417600.

Engine, Blade and Belt

Models 911044,046,052,060,061,062,064



Engine, Blade and Belt

Models 911044,046,052,060,061,062,064

ITEM NO.	PART NO.	DESCRIPTION	QTY	ITEM NO.	PART NO.	DESCRIPTION	QTY
1	02460700	Key w/Cap (46)	1	13	01159900	Blade Adapter (60,64)	1
2	07517700	Ignition Switch Cap (46)	1		01169900	Blade Adapter (44,46,52,61,62)	1
3	06517300	Ignition Switch Nut (46)	1	14	07217100	V-Belt (44,46,52,61,62)	1
4	06301900	Wshr-Lock Int .625 x .045 PI (46)	1	15	05923000	Blt-Hex .44-14 x 1.25 PI Gr 2	1
5	01155800	Key Switch (46)	1	16	07313300	Idler-Flat 1.75 x .47 Dayco (44,46,52,61,62)	1
6	01167200	Wire Harness (46)	1				
7	01159000	Battery (46)	1	17	06504200	Nut-Lk .312-18 Gr A PI	2
8	01126000	Battery Charger (46)	1	18	06405700	Wshr-FI-Stl .323 x .625 x .062 PI (44,46,52,61,62)	1
9	01157100	Recoil Start Handle	1				
10	07517600	Fuel Cap	1	19	01142000	Spacer (44,46,52,61,62)	1
11	07403000	Scr-Tap .375-16 x 1.0 Hwh PI Tr	3	20	01141200	Idler Arm (44,46,52,61,62)	1
12	08231000	5 HP Tecumseh 4 Cycle Vector® Engine No. - VLV50-500028B (60)	1	21	05515400	Bshg-Flg .325 x .301 x .257 x 1.120 (44,46,52,61,62)	1
	08231900	5.5 HP Tecumseh 4 Cycle Vector® Engine No. - VLV55-501001A (44,52)	1	22	06513200	Nut-Lk .437-14 Gr A PI (44,46,52,61,62)	1
	08232000	5.5 HP Tecumseh 4 Cycle Vector® Engine No. VLV55-501002 (46)	1	23	08321100	Sg-Tens .043 x .44 x 3.31 (44,46,52,61,62)	1
	08234500	4.5 HP Tecumseh 4 Cycle Premier® Engine No. - TVS115-57603B (64)	1	24	05902200	Blt-Hex .31-18 x .75 PI Gr 2 (44,46,52,61,62)	1
	08239300	6.0 HP Tecumseh 4 Cycle Ultra® Engine No. - OVRM60-21001A (61)	1	25	01137059	21" Mower Blade (44,46,52,61,62)	1
	08239400	5 HP Tecumseh 4 Cycle Premier® Engine No. - TVS115-61620B (62)	1		01172300	LM21" Mulching Blade (62,64)	1
				26	06302100	Wshr-Lock .375 x .094 Med PI	1
				27	05909400	Blt-Hex .38-24 x 2.00 PI Gr 2	1
				28	06424800	Wshr-Hdnd-Thr .390 x 1.50 x .125 PI	1

**For model 911304, use the same parts as model 911060
except for the following:**

Page	Reference No.	Qty	Model 911060	Description	Model 911304
2		1	07759200	Decal-Danger	07711200
2		1	07893700	Decal-Warning	07711300
3		1	07766100	Decal-Ariens	07785300
3		1	07708700	Decal - 5.0 HP	07708400
4/5		1	Not Used	Throttle Cable	06926300
4/5		1	Not Used	Blt-Hex .25-20 x 2.25	05932700
4/5		1	Not Used	Nut-Lk-Ctr .250-20 PI	06504000
4/5		1	Not Used	Casing Clamp	01158500
4/5		1	Not Used	Scr-Tap 10-32 x .62 Hwh PI	07410800
4/5	8	1	06921100	Engine Control Cable	06922000
6/7	14	1	71102700	Mulch Master Mulcher Accessory	Not Used
14/15	12	1	08231000	Engine-Tecumseh	08232200
14/15	13	1	01159900	Blade Adapter	01171500
14/15		1	Not Used	Key-Wdrf .156 x .125 .25 SAE 6	06600900

**For models 911305 and 911311, use the same parts as 911044
except for the following:**

Page	Reference No.	Qty	Model 911044	Description	Model 911305	Model 911311
2		1	07759200	Decal - Danger	07711200	07711200
2		1	07893700	Decal - Warning	07711300	07711300
3		1	07708500	Decal - Self-Propelled	Not Used	Not Used
3		1	07766100	Decal - Ariens	07785300	07785300
3		1	07708600	Decal - 5.5 HP	07704600	07708400
4/5		1	Not Used	Throttle Cable	Not Used	06926300
4/5		1	Not Used	Blt-Hex .25-20 x 2.25	Not Used	05932700
4/5		1	Not Used	Nut-Lk-Ctr .250-20 PI	Not Used	06504000
4/5		1	Not Used	Casing Clamp	Not Used	01158500
4/5		1	Not Used	Scr-Tap 10-32 x .62 Hwh PI	Not Used	07410800
4/5	8	1	06921100	Engine Control Cable	06921100	06922000
6/7	14	1	71102700	Mulch Master Mulcher Accessory	Not Used	Not Used
14/15	12	1	08231900	Engine-Tecumseh 5.5 HP Recoil Vector	08231900	08232200
14/15	13	1	01169900	Blade Adapter	01169900	01171500
14/15		1	Not Used	Key-Wdrf .156 x .125 x .25 SAE 6	Not Used	06600900

**For model 911306, use the same parts as model 911046
except for the following:**

Page No.	Reference	Qty	Model 911046	Description	Model 911306
2		1	07759200	Decal - Danger	07711200
2		1	07893700	Decal - Warning	07711300
3		1	07708500	Decal - Self Propelled	Not Used
3		1	07766100	Decal - Ariens	07758300
3		1	07708600	Decal - 5.5 HP	07704600
6/7	14	1	71102700	Mulchmaster Plug	Not Used
14/15	8	1	01126000	Battery Charger	Not Used

**For model 911307, use the same parts as model 911052
except for the following:**

Page No.	Reference	Qty	Model 911052	Description	Model 911307
2		1	07759200	Decal - Danger	07711200
2		1	07893700	Decal - Warning	07711300
3		1	07766100	Decal - Ariens	07785300
3		1	07708600	Decal - 5.5 HP	07704600
3		1	07708500	Decal - Self Propelled	Not Used

**For model 911308, use the same parts as model 911061
except for the following:**

Page No.	Reference	Qty	Model 911061	Description	Model 911308
2		1	07759200	Decal - Danger	07711200
2		1	07893700	Decal - Warning	07711300
3		1	07766100	Decal - Ariens	07785300
3		1	07708100	Decal - 6.0 HP	Not Used
3		1	07708200	Decal - Commercial	Not Used
3		1	07708500	Decal - Self Propelled	Not Used
4/5		1	Not Used	Throttle Cable	06926300
4/5		1	Not Used	Blt Hex .25-20 x 2.25	05932700
4/5		1	Not Used	Nut-Lk-Ctr .250-20 PI	06504000
4/5		1	Not Used	Casing Clamp	01158500
4/5		1	Not Used	Scr-Tap 10-32 x .62 Hwh PI	07410800
4/5	8	1	06921100	Engine Control Cable	06922000
6/7	14	1	71102700	Mulch Master Mulcher Accessory	Not Used
14/15	12	1	08239300	Engine-Tecumseh	08231500
14/15	13	1	01169900	Blade Adapter	01171500
1415		1	Not Used	Key-Wdrf .156 x .125 x .25 SAE 6	06600900

**For models 911309 and 911310, use same parts as model 911062
except for the following:**

Page No.	Reference	Qty	Model 911062	Description	Model 911309	Model 911310
2		1	07759200	Decal - Danger	07711200	07711200
2		1	07893700	Decal - Warning	07711300	07711300
3		1	07708300	Decal - Ariens	07785300	07708300
3		1	07708700	Decal - 5 HP	07704600	07764000
3		1	07708500	Decal - Self Propelled	Not Used	Not Used
4/5	8	1	06921100	Engine Control Cable	06921100	06926500
4/5		1	Not Used	Scr-Tap 10-32 x .62 Hwh PI	Not Used	06103900
6/7	14	1	71102700	Mulch Master Mulcher Accessory	01163500	Not Used
14/15	12	1	08239400	Engine-Tecumseh	08231900	08239900
14/15	25	1	01172300	Blade-Mulching	01172300	01137000

Ask your dealer for information about these other fine Ariens Products:

- **Front and Rear Tine Tillers**
- **21" Walk-Behind Lawn Mowers**
- **Walk-Behind Sno-Thros**
- **Rear Engine Riding Mowers**
- **Yard and Garden Tractors**
- **Commercial Walk-Behind and Riding Mowers**

Ariens®

Ariens Company
655 W. Ryan Street
P.O. Box 157
Brillion, WI 54110-1098