




Promaster 252Z / 260Z / 272Z

Parts Manual

Models



992045 - 25hp 52"	992087 - 27hp 52"
992046 - 25hp 60"	992088 - 25hp 60"
992047 - 27hp 60"	992089 - 27hp 60"
992052 - 27hp 52"	992091 - 28hp EFI 72"
992066 - 25hp 52"	992102 - 25hp 52"
992067 - 25hp 60"	992103 - 26hp 52"
992068 - 27hp 60"	992104 - 26hp 52"
992071 - 27hp 52"	992105 - 26hp 60"
992084 - 26hp 52"	992106 - 26hp 60"
992085 - 26hp 60"	992107 - 28hp EFI 72"
992086 - 26hp 72"	992108 - 26hp 72"

THE MANUAL

Before you operate your unit, carefully and completely read manuals supplied with the unit. The contents will provide you with an understanding of safety instructions and controls during normal operation and maintenance.

For your safety and the safety of others always read, understand, and follow all DANGER, WARNING, and CAUTION messages found in manuals and on safety decals.

Hardware descriptions are given in decimals.

Decimals to Fractions			
.063	1/16	.563	9/16
.125	1/8	.625	5/8
.188	3/16	.688	11/16
.250	1/4	.750	3/4
.313	5/16	.813	13/16
.375	3/8	.875	7/8
.438	7/16	.938	15/16
.500	1/2	1.00	1

SERVICE AND REPLACEMENT PARTS

When ordering replacement parts or making service inquiries, know the Model and Serial numbers of your unit and engine.

Numbers are located on the product registration card in the unit literature package. They are printed on a serial number label, located on the frame of your unit.

- Record Unit Model and Serial numbers here:

- Record Engine Model and Serial numbers here:

UNAUTHORIZED REPLACEMENT PARTS

Use only Gravelly replacement parts. The replacement of any part on this vehicle with anything other than a Gravelly authorized replacement part may adversely affect the performance, durability, or safety of this unit and may void the warranty. Gravelly disclaims liability for any claims or damages, whether warranty, property damage, personal injury or death arising out of the use of unauthorized replacement parts.

PRODUCT REGISTRATION

The Gravelly dealer must register the product at the time of purchase. Registering the product will help the company process warranty claims or contact you with the latest service information. All claims meeting requirements during the limited warranty period will be honored, whether or not the product registration card is returned. Keep a proof of purchase if you do not register your unit.

Customer Note: If Dealer does not register your product, please fill out, sign and return the product registration card to Gravelly or go to www.gravelly.com.

YOUR SATISFACTION IS IMPORTANT

Questions? Please follow these helpful steps:

1. Refer to the manuals supplied with your unit.

They will guide you through safe and proper operation and maintenance.

They contain specifications on your unit.

If your questions are not answered in these manuals, go to step number two.

2. Contact Your Dealer.

Our dealers will be happy to supply any service or advice required to keep your unit operating at peak efficiency.

A factory trained staff is available to support your equipment needs. They stock genuine Gravelly parts and lubricants manufactured with the same precision and skill as the original.

If your questions are not resolved by the support staff, ask for the manager or owner.

When contacting your Dealer supply your model and serial numbers.

TO SPEED PARTS ORDERING:

1. Know the model and serial numbers of your unit.
2. Know the part number required.
3. Know the quantity required.
4. Know the part description.

MODELS

Model 992045

25hp Kawasaki with 52" Mower Deck
Serial No. 004501 and up

Model 992046

25hp Kawasaki with 60" Mower Deck
Serial No. 004501 and up

Model 992047

27hp Kohler with 60" Mower Deck
Serial No. 004501 and up

Model 992052

27hp Kohler with 52" Mower Deck
Serial No. 004501 and up

Model 992066 - Eye-Q

25hp Kawasaki with 52" Mower Deck
Serial No. 004501 and up

Model 992067 - Eye-Q

25hp Kawasaki with 60" Mower Deck
Serial No. 004501 and up

Model 992068 - Eye-Q

27hp Kohler with 60" Mower Deck
Serial No. 004501 and up

Model 992071 - Eye-Q

25hp Kawasaki with 72" Mower Deck
Serial No. 004501 and up

Model 992084 - Eye-Q

26hp Kawasaki L/C with 52" Mower Deck
Serial No. 000501 and up

Model 992085 - Eye-Q

26hp Kawasaki L/C with 60" Mower Deck
Serial No. 000501 and up

Model 992086 - Eye-Q

26hp Kawasaki L/C with 72" Mower Deck
Serial No. 000501 and up

Model 992087

27hp Kohler with 52" Mower Deck, Mechanical Lift
Serial No. 000501 and up

Model 992088

25hp Kawasaki with 60" Mower Deck, Mechanical Lift
Serial No. 000501 and up

Model 992089

27hp Kohler with 60" Mower Deck, Mechanical Lift
Serial No. 00501 and up

Model 992091 - Eye-Q

28hp Kohler EFI with 72" Mower Deck
Serial No. 000501 and up

Model 992102

25hp Kawasaki with 52" Mower Deck, Mechanical Lift
Serial No. 000501 and up

Model 992103

26hp Kawasaki L/C with 52" Mower Deck, Mechanical Lift
Serial No. 000501 and up

Model 992104

26hp Kawasaki L/C with 52" Mower Deck
Serial No. 000501 and up

Model 992105

26hp Kawasaki L/C with 60" Mower Deck, Mechanical Lift
Serial No. 000501 and up

Model 992106

26hp Kawasaki L/C with 60" Mower Deck
Serial No. 000501 and up

Model 992107

28hp Kohler EFI with 72" Mower Deck
Serial No. 000501 and up

Model 992108

26hp Kawasaki L/C with 72" Mower Deck
Serial No. 000501 and up

TABLE OF CONTENTS

DECALS

Decals 5

MAIN FRAME

Frame 8

Seat and Hood Frame 10

Hood and Bumper 11

POWER PLANT

Engine and Clutch 12

Fuel Tanks and Hoses 13

DRIVE TRAIN

Transmission 16

Motors and Wheels 17

OPERATOR CONTROLS

Controls 18

Brakes 20

Control Panel 21

HYDRAULICS

Lift Valve and Cylinder 22

Mechanical Lift 23

Hydraulic Tank, Filter and Pump to Tank Circuit . . . 24

Deck Lift and Motor to Pump Circuit 25

Hydraulic Diagram 26

ELECTRICAL

Electrical System 28

Wiring Diagrams 30

Continuity Diagrams 33

MOWER DECKS

Deck Lift 34

Deck, Discharge Chute and Baffles 35

Mounting Brackets 36

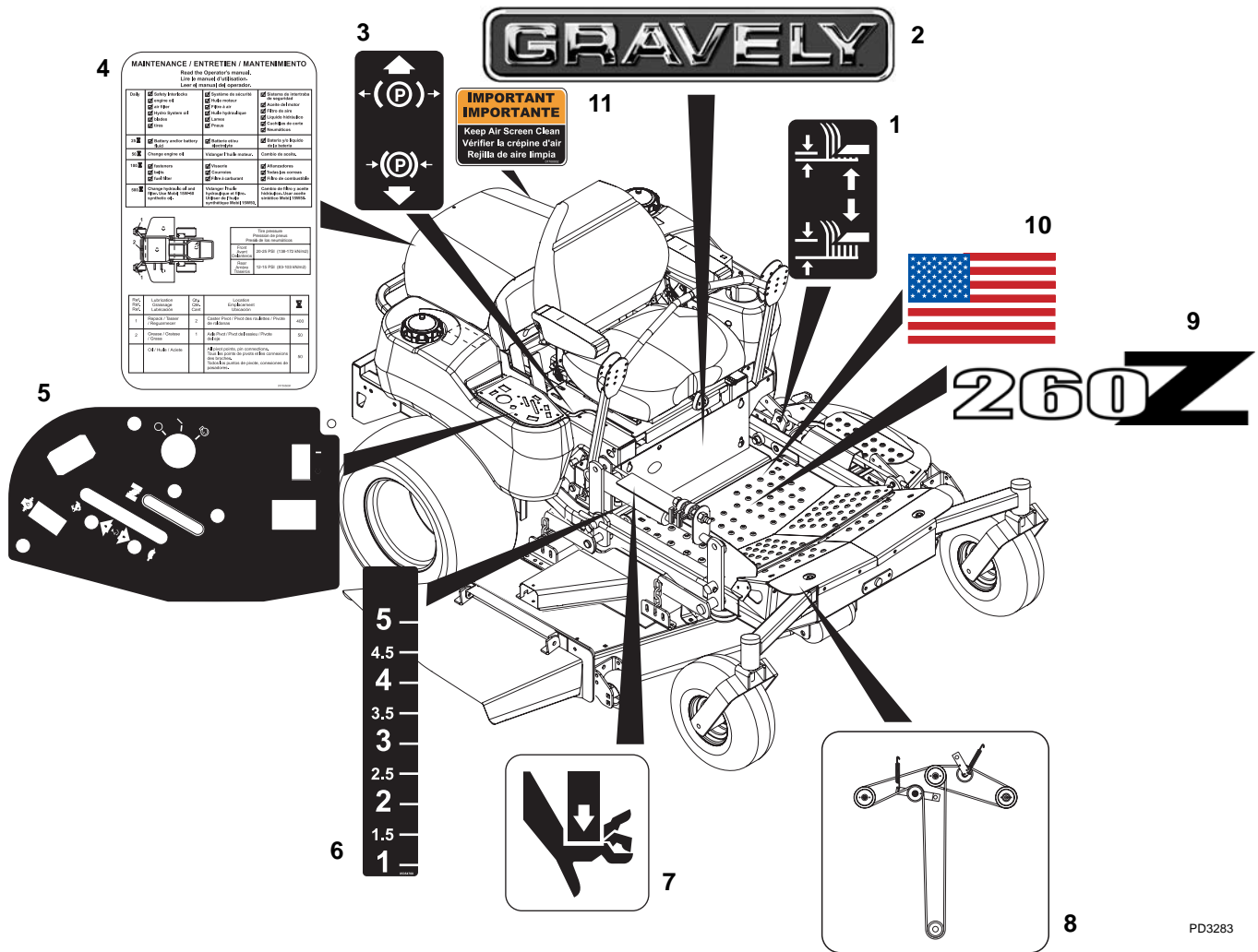
Belt, Spindles, Idlers and Blades 38

Mounting Arms and Belt Guards 40

Rollers 41

DECALS

Model 992045, 046, 047, 052, 066, 067, 068, 071, 084, 085, 086, 087, 088, 089, 091, 102, 103, 104, 105, 106, 107, 108



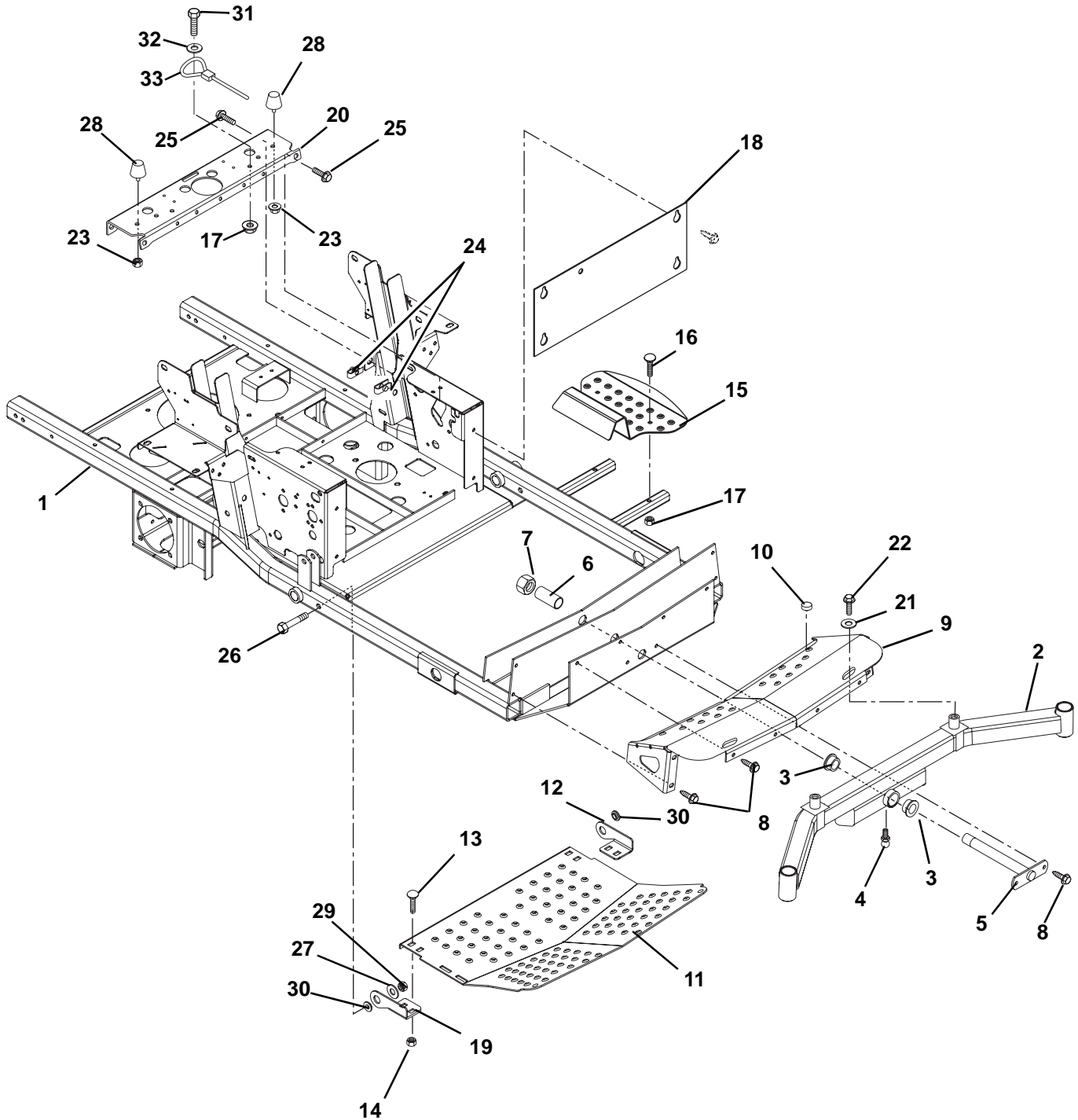
PD3283

Item	Part No.	Qty.	Description
1	07735300	1	Decal, Lift Lever (045, 046, 047, 052, 066, 067, 068, 071, 086, 091, 104, 106, 107, 108)
2	05225500	1	Decal, 15 in. Gravely Logo
3	07757500	1	Decal, Parking Brake Lever
4	07735500	1	Decal, Service Instructions
5	05238800	1	Decal, Control Panel (045, 046, 047, 052, 066, 067, 068, 071, 086, 087, 088, 089, 102, 108)
	05238700	1	Decal, Control Panel (091, 107)
	05361800	1	Decal, Control Panel (084, 085, 103, 104, 105, 106)
6	05354700	1	Decal, Height of Cut (045, 046, 047, 052, 066, 067, 068, 071, 084, 085, 086, 091, 104, 106, 107, 108)
	00166400	1	Decal, Height of Cut (087, 088, 089, 102, 103, 105)
7	05359400	1	Decal, Pinch Point (045, 046, 047, 052, 066, 067, 068, 071, 084, 085, 086, 091, 104, 106, 107, 108)
8	07734600	1	Decal, Belt Diagram (045, 046, 047, 052, 066, 067, 068, 071, 084, 085, 086, 087, 088, 089, 102, 103, 104, 105, 106, 108)
	05227100	1	Decal, Belt Diagram (091, 107)
9	05233600	1	Decal, PM-260Z (046, 047, 067, 068, 085, 088, 089, 105, 106)
	05233500	1	Decal, PM-272Z (086, 091, 107, 108)
	05305500	1	Decal, PM-252Z (084, 087, 102, 103, 104)
10	05305100	1	Decal, American Flag
11	07700002	1	Decal, Warning Clean Debris (084, 085, 086, 103, 104, 105, 106, 108)

NOTES

FRAME

Model 992045, 046, 047, 052, 066, 067, 068, 071, 084, 085, 086, 087, 088, 089, 091, 102, 103, 104, 105, 106, 107, 108



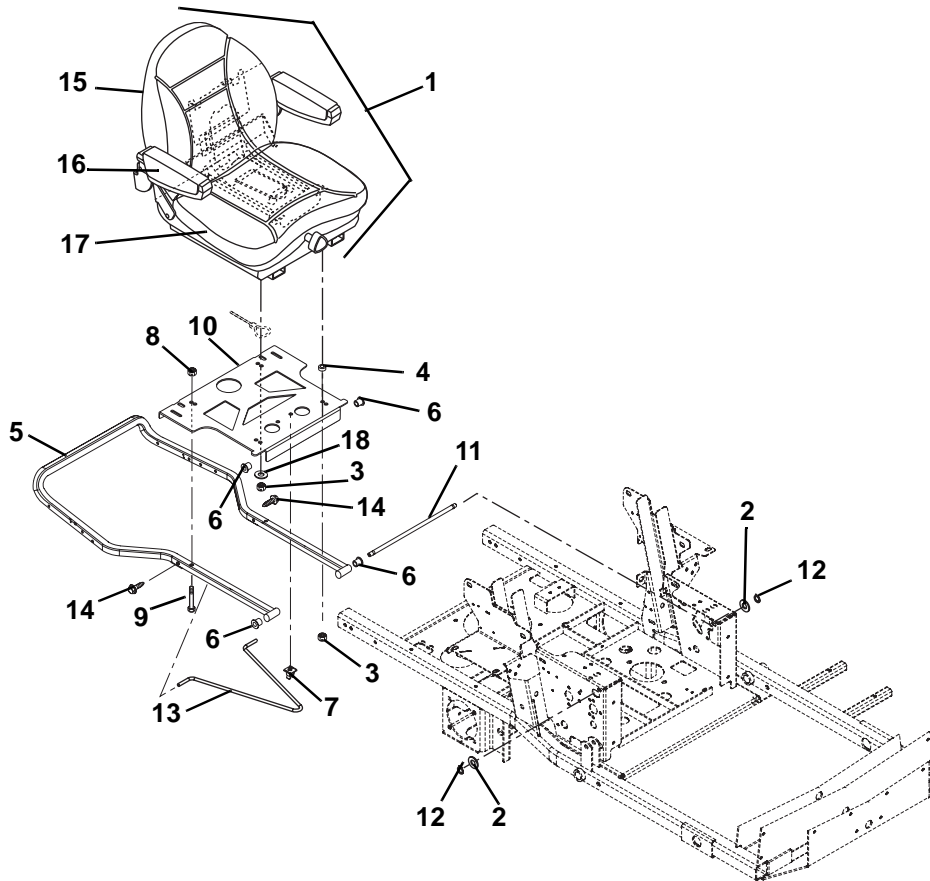
FRAME

Model 992045, 046, 047, 052, 066, 067, 068, 071, 084, 085, 086, 087, 088, 089, 091, 102, 103, 104, 105,
106, 107, 108

Item	Part No.	Qty.	Description
1	09288551	1	Weldment, Frame
2	09263753	1	Weldment, Axle
3	018355	2	Bushing, Flange 1.02 x 1.385 x .75 x 1.75
4	411027	1	Fitting, Lube .25-28 x .256
5	09232000	1	Pin, Axle
6	09231900	1	Spacer
7	06543200	1	Nut, Locking Nylon 1.00-14
8	07415400	10	Screw, Tapping .38-16 x .75
9	09278053	1	Weldment, Axle Cover
10	07516000	4	Button, Bumper
11	09233353	1	Panel, Inspection
12	09267151	1	Hinge, Footboard Left Hand
13	06223600	4	Bolt, Round Head Square Neck .38-16 x 1.00 Grade 5
14	06542000	4	Nut-Locking-Top-Flange .38-16
15	09231251	1	Step, Ingress
16	06220200	2	Bolt, Round Head Square Neck .31-18 x 1.75 Grade 5
17	06543100	3	Nut, Locking Top Flange .31-18
18	09234053	1	Plate, Kick
19	09267251	1	Hinge, Footboard Right Hand
20	09275051	1	Channel, Cross
21	06435200	2	Washer, Flat Steel .640 x 1.81 x .25
22	05975000	2	Bolt, Hex .50-20 x 1.00 Grade 5
23	06534600	2	Nut, Locking Flange .312-24
24	07053300	4	Nut, Retainer .375-16 x .37
25	07049900	4	Bolt, Serrated Hex Flange Washer Head .38-16 x 1.00
26	05960000	2	Bolt, Hex .50-13 x 3.25 Grade 5
27	06442000	2	Washer, Flat Steel .563 x 1.38 x .109
28	07533000	2	Bumper
29	06543600	2	Nut-Locking-Top-Flange .50-13
30	05532100	2	Bushing, Flange .515 x .75 x .275 x 1.12
31	05947000	1	Bolt, Hex .31-18 x .75 Grade 5
32	06437500	1	Washer, Flat Steel .328 x 1.00 x .094
33	06900010	1	Cable, Seat Prop.

SEAT AND HOOD FRAME

Model 992045, 046, 047, 052, 066, 067, 068, 071, 084, 085, 086, 087, 088, 089, 091, 102, 103, 104, 105, 106, 107, 108

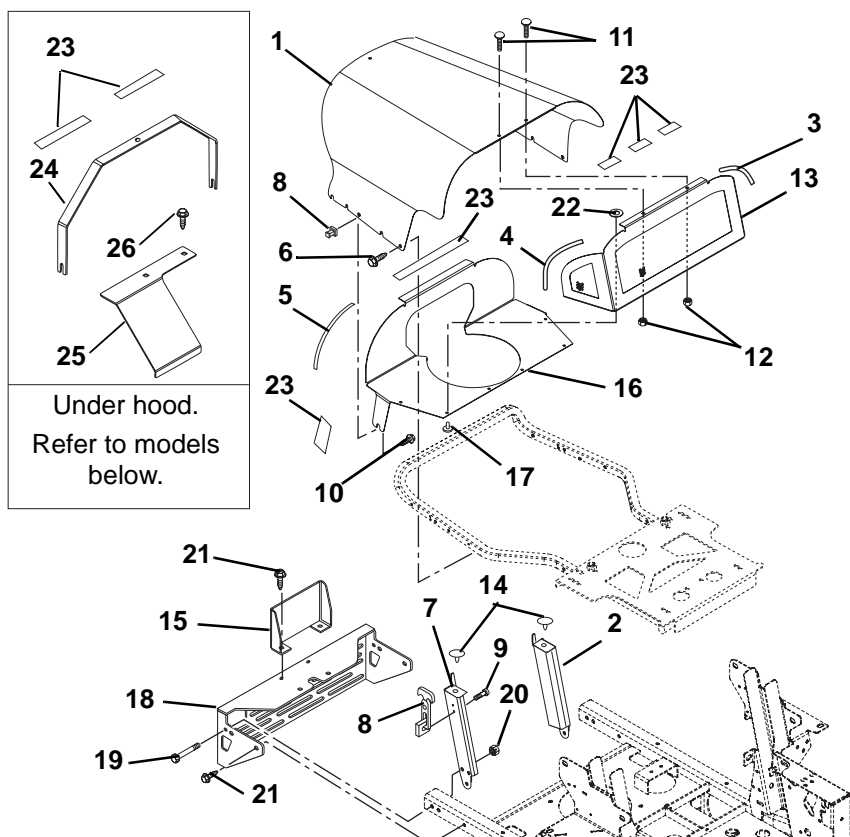


PD0021

Item	Part No.	Qty.	Description
1	09293000	1	Seat, Suspension
2	06441900	2	Washer, Flat Steel .531 x 1.06 x .095
3	06543100	4	Nut, Locking Top Flange .31-18
4	039145	4	Bushing, Sleeve .377 x .624 x .235
5	09293353	1	Weldment, Hood Frame
6	034738	4	Bushing-Flange .515 x .750 x .745 x 1.00
7	07534100	1	Clip
8	06542000	2	Nut, Locking Top Flange .38-16
9	07056300	2	Bolt, Rib Neck .38-16 x 1.50
10	09259751	1	Weldment, Seat Pivot Plate
11	09245400	1	Rod, Seat Frame Pivot
12	05717100	2	Ring, Retaining External .500 x .050
13	09258500	1	Rod, Prop
14	07412000	2	Screw, Tapping .25-20 x .50 Hex Washer Head
15	59204300	AR	Kit, Back Cushion
16	59204500	AR	Armrest
17	59204400	AR	Kit, Seat Cushion
18	06437500	1	Washer, Flat Steel .328 x 1.00 x .094

HOOD AND BUMPER

Model 992045, 046, 047, 052, 066, 067, 068, 071, 084, 085, 086, 087, 088, 089, 091, 102, 103, 104, 105, 106, 107, 108

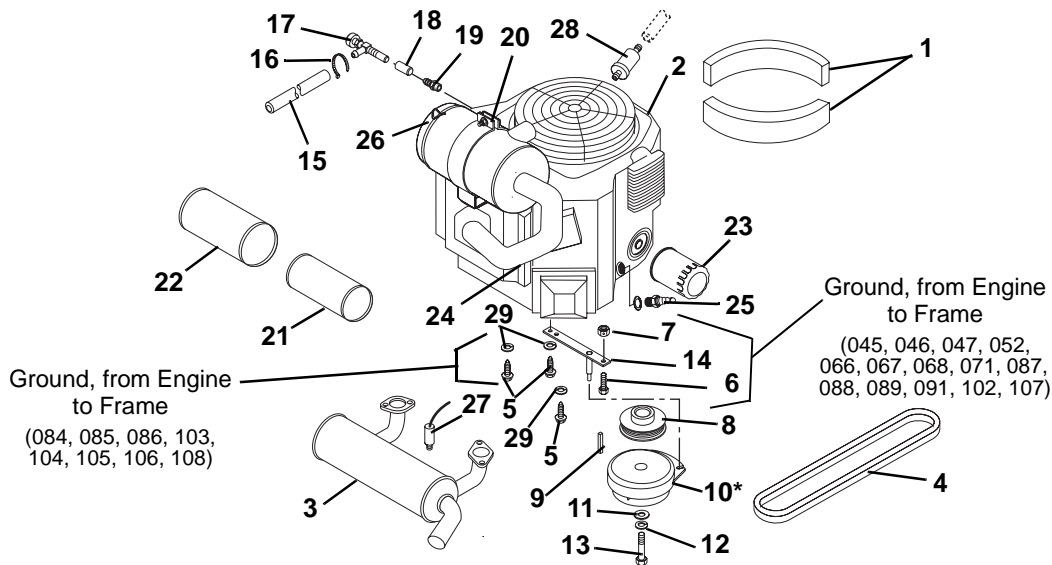


PD0030

Item	Part No.	Qty.	Description
1	09257753	1	Hood
2	09275153	1	Weldment, Hood Support, Left Hand
3	00929000	4 in.	Seal, Trim Lok Bulk .06 Bubble (045, 046, 047, 052, 066, 067, 068, 071, 087, 088, 089, 091, 102, 107)
	00929000	4 in.	Seal, Trim Lok Bulk .06 Bubble
4	00929000	9 in.	Seal, Trim Lok Bulk .06 Bubble (045, 046, 047, 052, 066, 067, 068, 071, 087, 088, 089, 091, 102, 107)
	00929000	9 in.	Seal, Trim Lok Bulk .06 Bubble
5	00929000	11 in.	Seal, Trim Lok Bulk .06 Bubble (045, 046, 047, 052, 066, 067, 068, 071, 087, 088, 089, 091, 102, 107)
6	07412900	4	Screw, Tapping .38-16 x .50 Hex Washer Head
7	09227953	1	Weldment, Hood Support Right Hand
8	09079500	2	Latch, Rubber
9	06116700	4	Screw, Machine 10-24 x .50 Hex Washer Head
10	06118200	2	Screw, Machine 10-24 x 1.50 Hex Washer Head (045, 046, 047, 052, 066, 067, 068, 071, 087, 088, 089, 091, 102, 107)
11	06220600	2	Bolt-Round Head Square Neck .25-20 x .50 Grade 5 (045, 046, 047, 052, 066, 067, 068, 071, 087, 088, 089, 091, 102, 107)
12	06543500	2	Nut-Locking-Top-Flange .25-20 (045, 046, 047, 052, 066, 067, 068, 071, 087, 088, 089, 091, 102, 107)
13	09257951	1	Weldment, Plenum (045, 046, 047, 052, 066, 067, 068, 071, 087, 088, 089, 091, 102, 107)
14	07516000	2	Button Bumper
15	09229951	1	Guard, Muffler
16	09293851	1	Support, Plenum (045, 046, 047, 052, 066, 067, 068, 071, 087, 088, 089, 091, 102, 107)
17	06817000	6	Rivet, Pop .18 x .402 (045, 046, 047, 052, 066, 067, 068, 071, 087, 088, 089, 091, 102, 107)
18	09293451	1	Bumper, Rear
19	05961400	4	Bolt, Hex .38-16 x 2.75 Grade 5
20	06542000	4	Nut-Locking-Top-Flange .38-16
21	07415400	4	Screw, Tapping .38-16 x .75 Hex Washer Head
22	06442700	6	Washer-Flat-Steel .219 x .50 x .049 (045, 046, 047, 052, 066, 067, 068, 071, 087, 088, 089, 091, 102, 107)
23	00932300	24 in.	VHB Tape 4941F (045, 046, 047, 052, 066, 067, 068, 071, 087, 088, 089, 091, 102, 107)
	00932300	12 in.	VHB Tape 4941F (084, 085, 086, 103, 104, 105, 106, 108)
24	09295600	1	Hood Support (045, 046, 047, 052, 066, 067, 068, 071, 087, 088, 089, 091, 102, 107)
25	00355400	1	Guard, Radiator Cap (084, 085, 086, 103, 104, 105, 106, 108)
26	07412000	2	Screw-Tapping .25-20X.50 Hex Washer Head Thread Rolling (045, 046, 047, 052, 066, 067, 068, 071, 087, 088, 089, 091, 102, 107)

ENGINE AND CLUTCH

Model 992045, 046, 047, 052, 066, 067, 068, 071, 084, 085, 086, 087, 088, 089, 091, 102, 103, 104, 105, 106, 107, 108



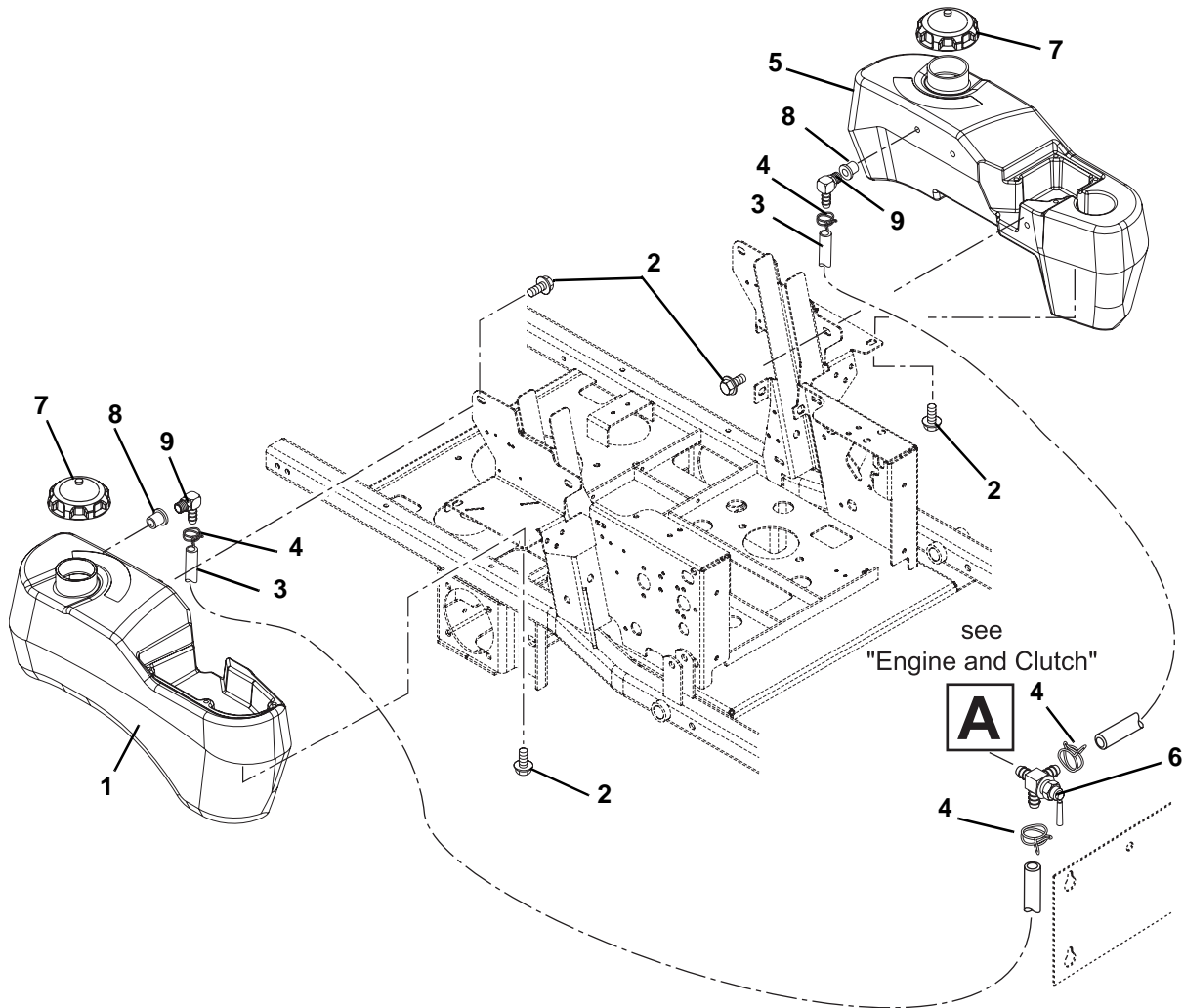
PD0050

Item	Part No.	Qty.	Description
1	09293900	2	Seal, Foam (091, 107)
2	08268200	1	Engine, Kohler 28HP EFI (CV74SS) (091, 107)
	08268100	1	Engine, Kohler 27HP Command Vertical (CV740S) (047, 052, 068, 071, 087, 089)
	08268300	1	Engine, 25 HP Kawasaki (FH721V) (045, 046, 066, 067, 088, 102)
	08200029	1	Engine, 26 HP Kawasaki (FD731D) (084, 085, 086, 103, 104, 105, 106, 108)
3	09257300	1	Muffler, Kohler EFI (091, 107)
	09294800	1	Muffler, Kohler Command (047, 052, 071, 087, 089)
	09281600	1	Muffler, Kawasaki (045, 046, 066, 067, 070, 088, 102)
	00297100	1	Muffler, Liquid Cooled (084, 085, 086, 103, 104, 105, 106, 108)
4	07242000	1	Belt, Poly-V
5	07414100	3	Screw, Tapping Hex Washer Head .38-16 x 1.00 (045, 046, 047, 052, 066, 067, 068, 071, 087, 088, 089, 091, 102, 107)
	05964900	5	Bolt, Hex M8-1.25 x 25 Grade 8 (084, 085, 086, 103, 104, 105, 106, 108)
6	05957400	1	Bolt, Hex .31-18 x 1.75 Grade 5 (045, 046, 047, 052, 066, 067, 068, 071, 087, 088, 089, 091, 102, 107)
7	06543100	1	Nut, Locking Top Flange .31-18
8	07327000	1	Sheave, Poly V 1.127 x 3.25
9	06602200	1	Key, Square .25 x 1.00 x .25
10	00389900	1	Clutch, Electric with Hi Temp Grease
11	06445000	1	Washer, Flat Steel .515 x 1.625 x .250
12	06309300	1	Washer, Locking .44 x .109
13	05965700	1	Bolt, Hex .44-20 x 3.00 Grade 5
14	04907200	1	Anchor, Clutch
15	021134	42 in.	Gas Line, Bulk .25 I.D. (045, 046, 047, 052, 066, 067, 068, 071, 084, 085, 086, 087, 088, 089, 102, 103, 104, 105, 106, 108)
	01590900	1	Tube, Oil Drain .50 I.D. x 8" (091, 107)
16	07517300	1	Cable Tie LG 5-1/2
17	00429000	1	Drain, 1/2" Drain
18	07052200	1	Adapter, .38 NPTF
19	02749600	1	Nipple
20	09257600	1	Bracket, Air Cleaner Mount
21	21536900	AR	Element, Inner Safety
22	21537000	AR	Element, Outer Primary
23	21397200	AR	Oil Filter (047, 052, 068, 071, 087, 089, 091, 107)
	21535800	AR	Oil Filter (045, 046, 084, 085, 086, 088, 102, 103, 104, 105, 106, 108)
24	21536800	AR	Hose, Air Intake (047, 052, 068, 071, 087, 089, 091, 107)
25	21525900	AR	Spark Plug (047, 052, 068, 071, 087, 089, 091, 107)
	21536100	AR	Spark Plug (045, 046, 066, 067, 088, 102)
	21538500	AR	Spark Plug (084, 085, 086, 103, 104, 105, 106, 108)
26	09257500	AR	Assembly, Air Cleaner
27	21537100	AR	Sensor, Oxygen (091, 107)
28	21410800	AR	Fuel Filter (045, 046, 066, 067, 088, 102)
	21539500	AR	Fuel Filter (047, 052, 068, 071, 087, 089, 091, 107)
	21538900	AR	Fuel Filter (084, 085, 086, 103, 104, 105, 106, 108)
29	06308600	5	Washer, Lock .31 x .078 (084, 085, 086, 103, 104, 105, 106, 108)

**59205200 - Brake Pole Module Replacement Kit for Clutch (Not Shown)

FUEL TANKS AND HOSES-Non EFI

Model 992045, 046, 047, 052, 066, 067, 068, 071, 084, 085, 086, 087, 088, 089, 102, 103, 104, 105, 106, 108

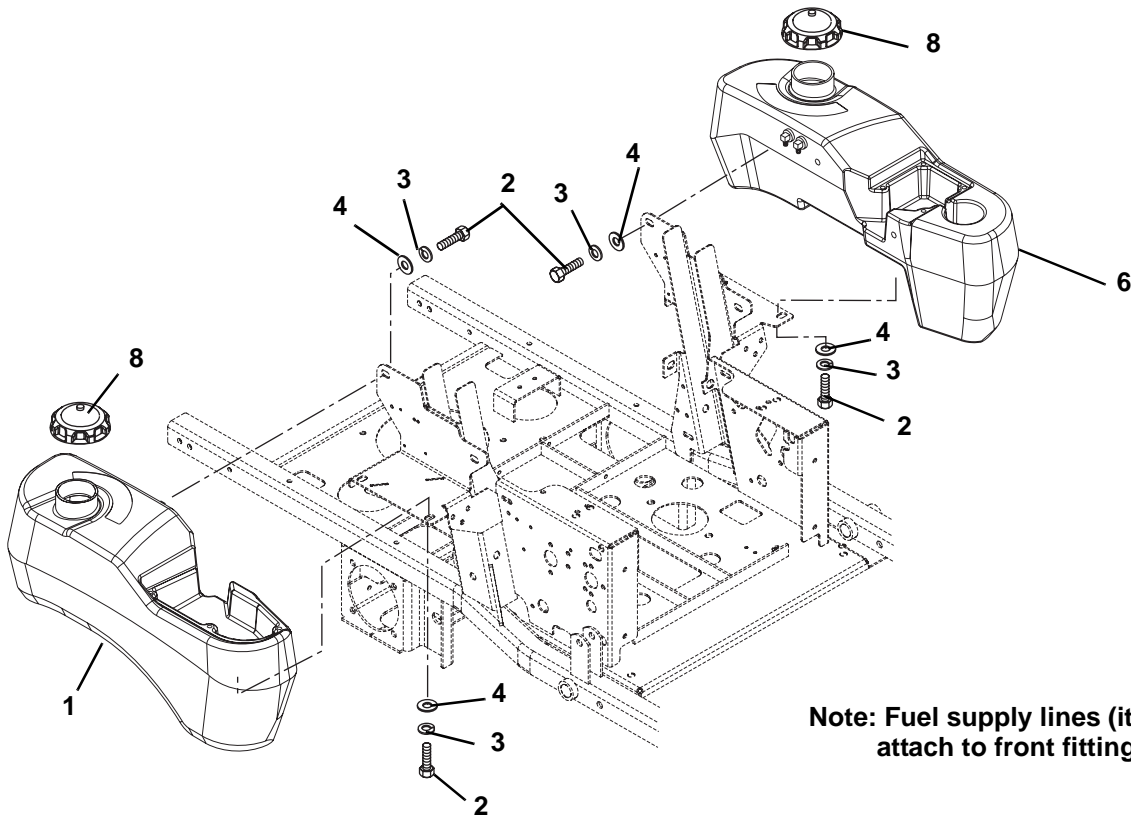


PD0070

Item	Part No.	Qty.	Description
1	09290700	1	Tank, Fuel - Right Hand
2	07000018	8	Bolt, SEMS .31-18 x .62
3	021134	126 in.	Gas Line, Bulk .25 I.D. (2 @ 42 in.) (045, 046, 047, 025, 066, 067, 068, 071, 087, 088, 089, 102)
	021134	111 in.	Gas Line, Bulk .25 I.D. (2 @ 42 in.) (084, 085, 086, 103, 104, 105, 106, 108)
4	06939100	4	Clamp, Hose Wire .49/.51 x .116
5	00191200	1	Tank, Left Hand Fuel (EYE-Q)- 200 Series
6	09258200	1	Valve, Fuel
7	00273700	2	Cap, Gas
8	07511400	AR	Grommet (Black in color. Does not replace or interchange with orange colored grommet.)
	00387300	AR	Grommet (Orange in color. Does not replace or interchange with black colored grommet.)
9	21539200	AR	Tank Fitting

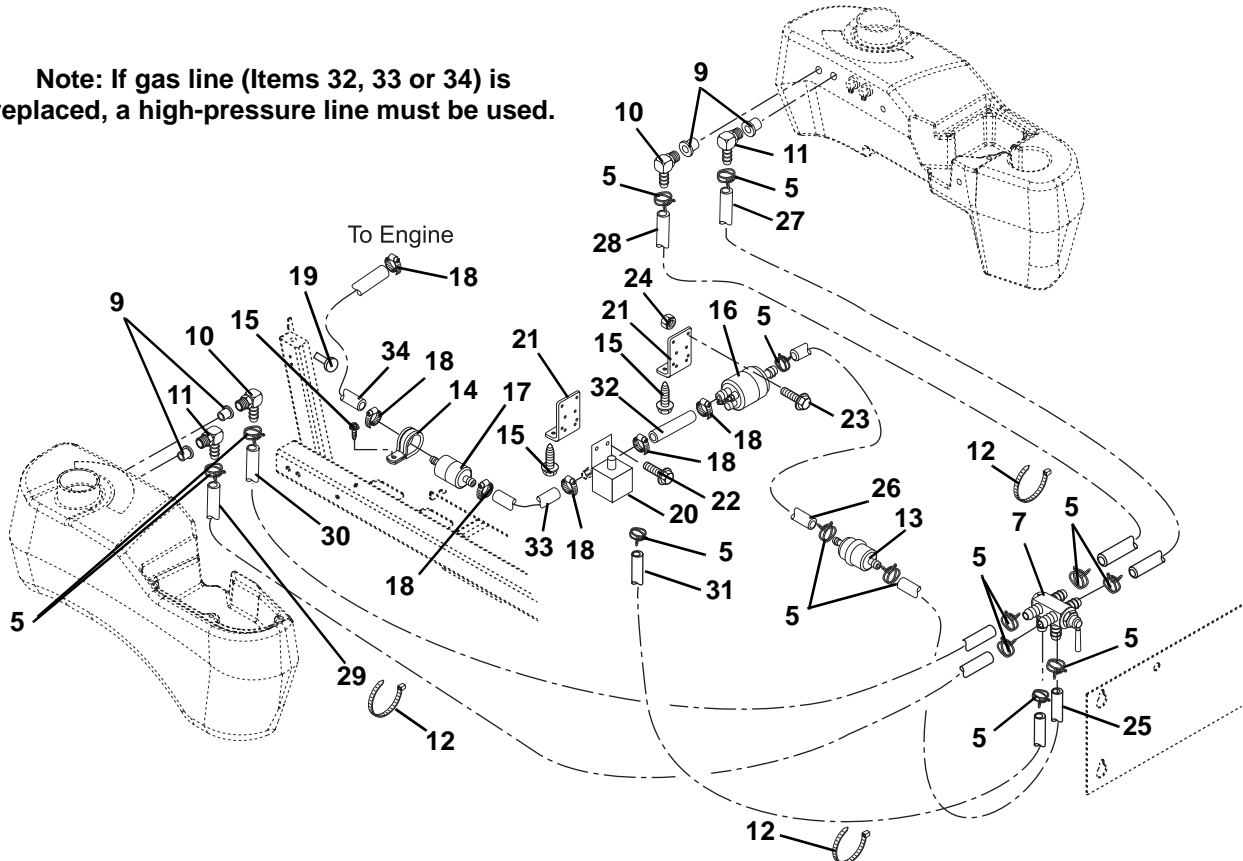
FUEL TANKS AND HOSES-EFI

Model 992091, 107



Note: Fuel supply lines (item 11) must attach to front fittings only.

Note: If gas line (Items 32, 33 or 34) is replaced, a high-pressure line must be used.



PD0060

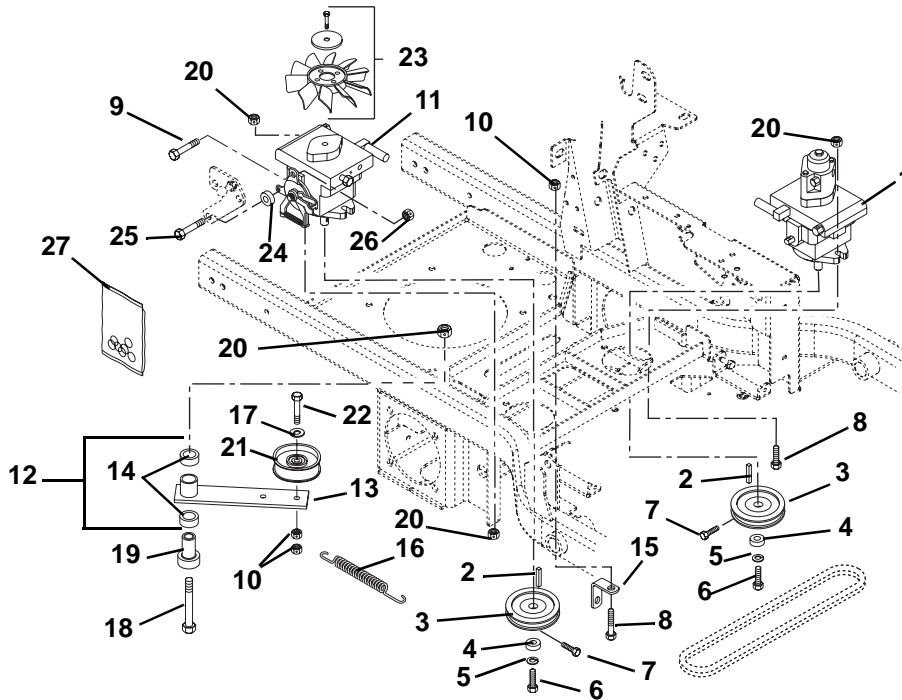
FUEL TANKS AND HOSES-EFI

Model 992091, 107

Item	Part No.	Qty.	Description
1	09290900	1	Fuel Tank, Right Hand
2	05947000	8	Bolt, Hex .31-18 x .75 Grade 5
3	06308600	8	Washer, Locking .31 x .078
4	06435700	8	Washer, Flat Steel .38 x .875 x .083
5	06947900	14	Hose, Clamp
6	00199100	1	Tank, Left Hand Fuel (EYE-Q) 200 Series-EFI
7	09289600	1	Valve, Fuel
8	00273700	2	Cap, Gas
9	07511400	AR	Bushing (Black in color. Does not replace or interchange with orange colored grommet.)
	00387300	AR	Grommet (Orange in color. Does not replace or interchange with black colored bushing.)
10	21537200	AR	Fitting, Tank Elbow
11	21539100	AR	Fitting, Tank Elbow
12	07517300	4	Tie, Cable
13	05050300	1	Filter, Fuel .31
14	06948000	1	Clamp, 2.18
15	07412900	5	Screw, Tapping .38-16 x .50 Hex Washer Head
16	21536600	1	Pump, EFI Fuel
17	21536500	1	Filter, Fuel
18	06924300	6	Hose Clamp
19	09236500	1	Tube Clip .75
20	21536700	1	Regulator, EFI Fuel
21	09292751	2	Bracket, Pump and Regular Mounting
22	07411600	2	Screw, Tapping .25-20 x .37 Hex Washer Head
23	06116700	4	Screw, Machine 10-24 x .50 Hex Washer Head
24	06504100	4	Nut, Locking Top 10-24
25	00922600	5.5"	Hose, .31 I.D. Low Pressure
26	00922600	8"	Hose, .31 I.D. Low Pressure
27	00922600	42"	Hose, .31 I.D. Low Pressure Left Hand
28	00922600	42"	Hose, .31 I.D. Low Pressure Left Hand
29	00922600	42"	Hose, .31 I.D. Low Pressure Right Hand
30	00922600	42"	Hose, .31 I.D. Low Pressure Right Hand
31	00936700	32"	Hose, .31 I.D. Low Pressure
32	00936700	2.75"	Gas Line .31 I.D. High Pressure
33	00936700	12"	Gas Line .31 I.D. High Pressure
34	00936700	17.75"	Gas Line .31 I.D. High Pressure

TRANSMISSION

Model 992045, 046, 047, 052, 066, 067, 068, 071, 084, 085, 086, 087, 088, 089, 091, 102, 103, 104, 105, 106, 107, 108

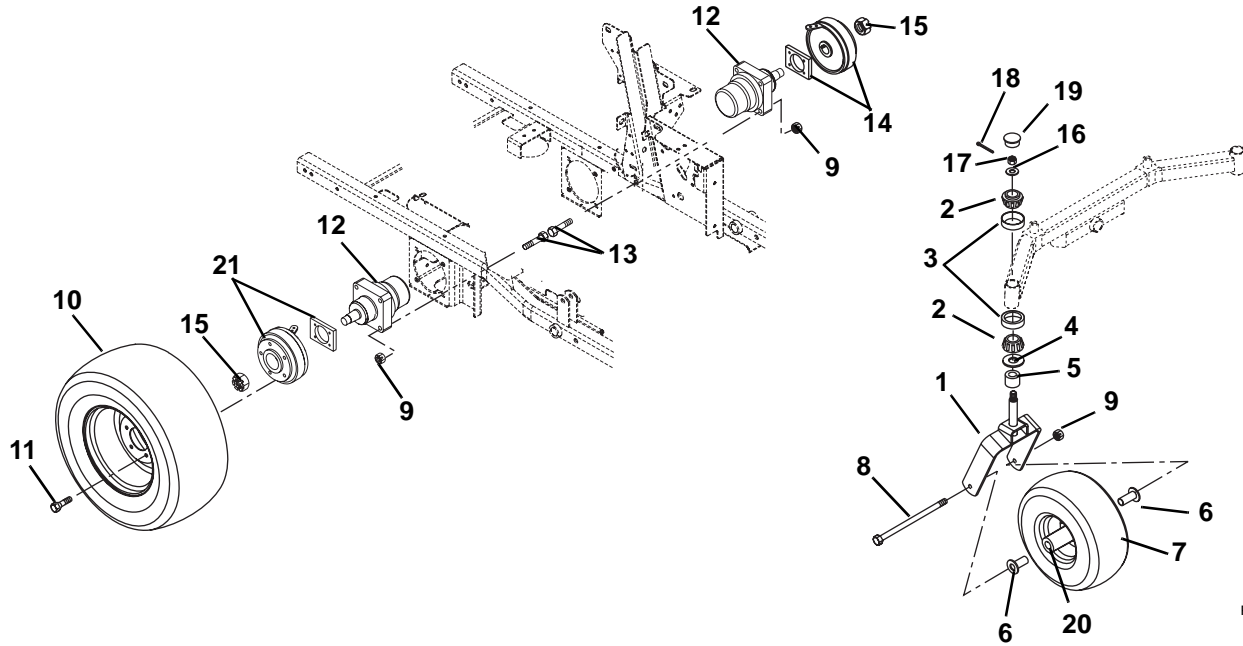


PD0081

Item	Part No.	Qty.	Description
1	09288000	1	Pump, Hydraulic BDP-21 with Auxiliary (045, 046, 047, 052, 066, 067, 068, 071, 084, 085, 086, 091, 104, 106, 107, 108)
	09291400	1	Pump, Hydraulic BDP-21 (087, 088, 089, 102, 103, 105)
2	06611300	2	Key, Square 5 x 5 x 30mm Plain
3	07327900	2	Sheave, Poly V .671 x 4.125
4	06400010	2	Washer, Pump .28 x 1.00 x .063
5	06308400	2	Washer, Locking .25 x .062
6	05975900	2	Bolt, Hex M6 x 1.0 x 16
7	05980100	4	Screw, Socket Head .25-20 x .50
8	05962000	4	Bolt, Hex .50-13 x 1.50 Grade 5
9	05947000	2	Bolt, Hex .31-18 x .75 Grade 5
10	06542000	2	Nut-Locking-Top-Flange .38-16
11	09287900	1	Pump, Hydraulic BDP-21 with Thru Fan
12	09219000	1	Assembly, Idler Arm Guard Drive (Includes 13 & 14)
13	09217051	1	Weldment, Idler Arm Ground Drive
14	05435800	2	Bearing, 1.00 x 1.12 x .75
15	09291100	1	Anchor, Spring Idler
16	08336000	1	Spring, Tension .120 x .845 x 6.500
17	06444300	1	Washer, Flat Steel .39 x .75 x .125
18	05965800	1	Bolt, Hex .50-13 x 3.50 Grade 5
19	07053100	1	Bearing, Pedestal Powdered Metal
20	06543600	5	Nut, Locking Top Flange .50-13
21	07312500	1	Idler, Flat 4.00 x 0.38
22	05962900	1	Bolt, Hex .38-16 x 2.25 Grade 5
23	09292400	1	Fan, Hydro Pump Cooling
24	03101900	2	Spacer .318 x .43 x .375
25	05947500	2	Bolt, Hex .31-18 x 1.25 Grade 5
26	06543100	2	Nut, Locking Top Flange .31-18
27	59203700	AR	Kit, Pump Seal (BDP-21A)(One kit required for each pump)

MOTORS AND WHEELS

Model 992045, 046, 047, 052, 066, 067, 068, 071, 084, 085, 086, 087, 088, 089, 091, 102, 103, 104, 105, 106, 107, 108

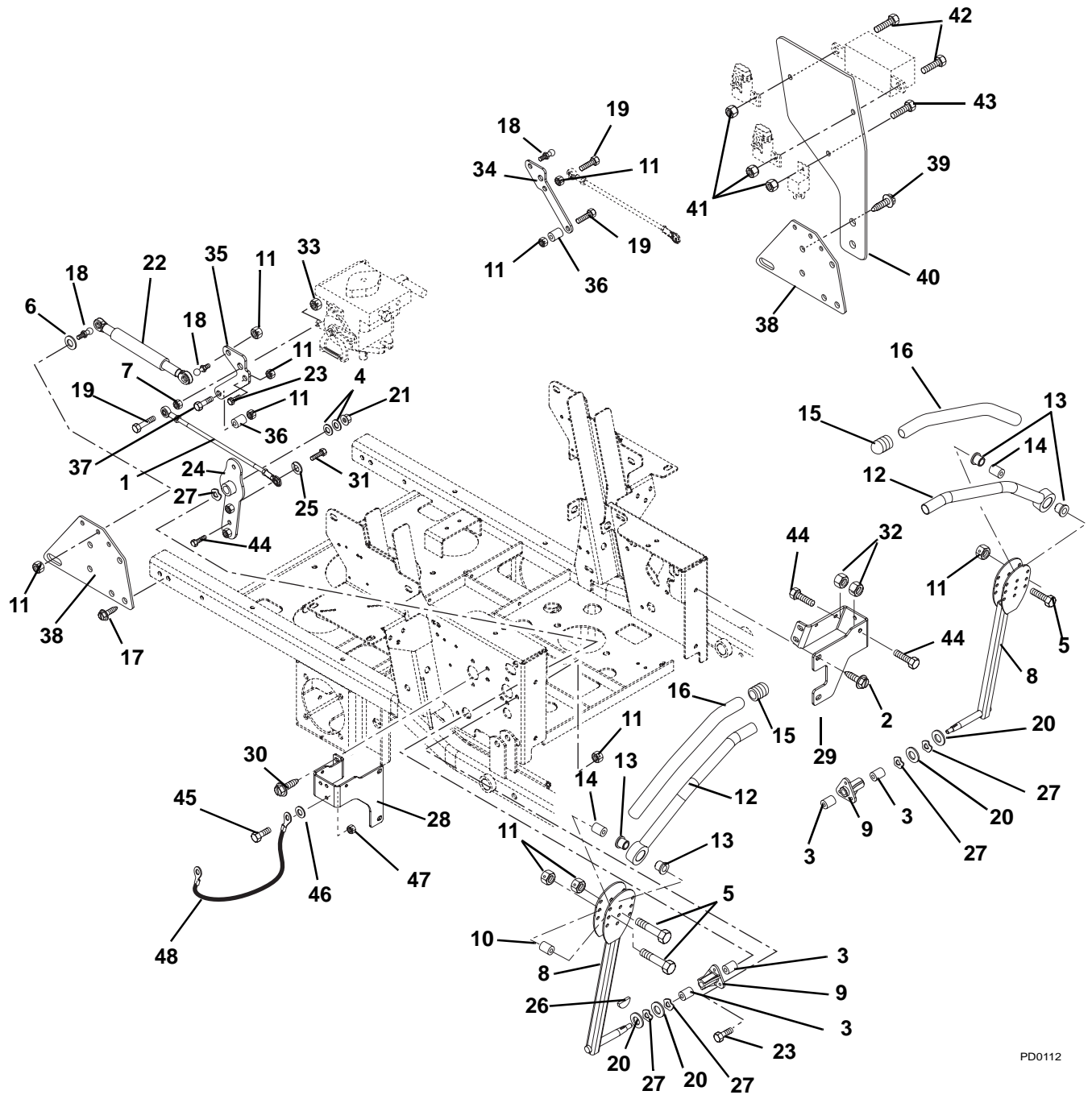


PD0091

Item	Part No.	Qty.	Description
1	09263653	2	Fork, Front
2	69000300	4	Bearing, Cone w/ Grease
3	05407000	4	Bearing, Cup 1.980 x .420
4	00531400	2	Bearing Seal 1.5 x 2 x .18
5	00531500	2	Spacer, PM, 1.03 I.D. x 1.5 O.D. x .375
6	00160900	4	Spacer, Wheel
7	07147800	2	Wheel/Tire Assembly
	07147100	AR	Tire, 15 x 6-6
8	05961200	2	Bolt, Hex .50-13 x 9.00 Grade 5
9	06543600	10	Nut-Locking-Top-Flange .50-13
10	07157500	2	Tire/Wheel Assembly 24 x 12-12
	07158100	2	Tire, Turfmaster 24 x 12-12
11	07067700	10	Bolt, Lug .50-20 x 1.38 Grade 8, 60 Degree
12	09263100	2	Hydraulic Wheel Motor (includes 15)
13	07067200	8	Bolt, Wheel Motor .50-13 x 2.75
14	09419800	1	Brake, Right Hand Park
15	06541900	2	Nut, Lock Jam Patch (Included with 12)
16	06441500	2	Washer, Flat Steel .755 x 1.375 x .062
17	00595500	2	Nut, Slotted .75-16
18	06712300	2	Pin, Cotter .16 x 1.00
19	20655400	2	Cap, Dust
20	05435700	AR	Bearing, 25mm I.D. x 52mm OD x 15mm
21	09419700	1	Brake, Left Hand Park

CONTROLS

Model 992045, 046, 047, 052, 066, 067, 068, 071, 084, 085, 086, 087, 088, 089, 091, 102, 103, 104, 105, 106, 107, 108



PD0112

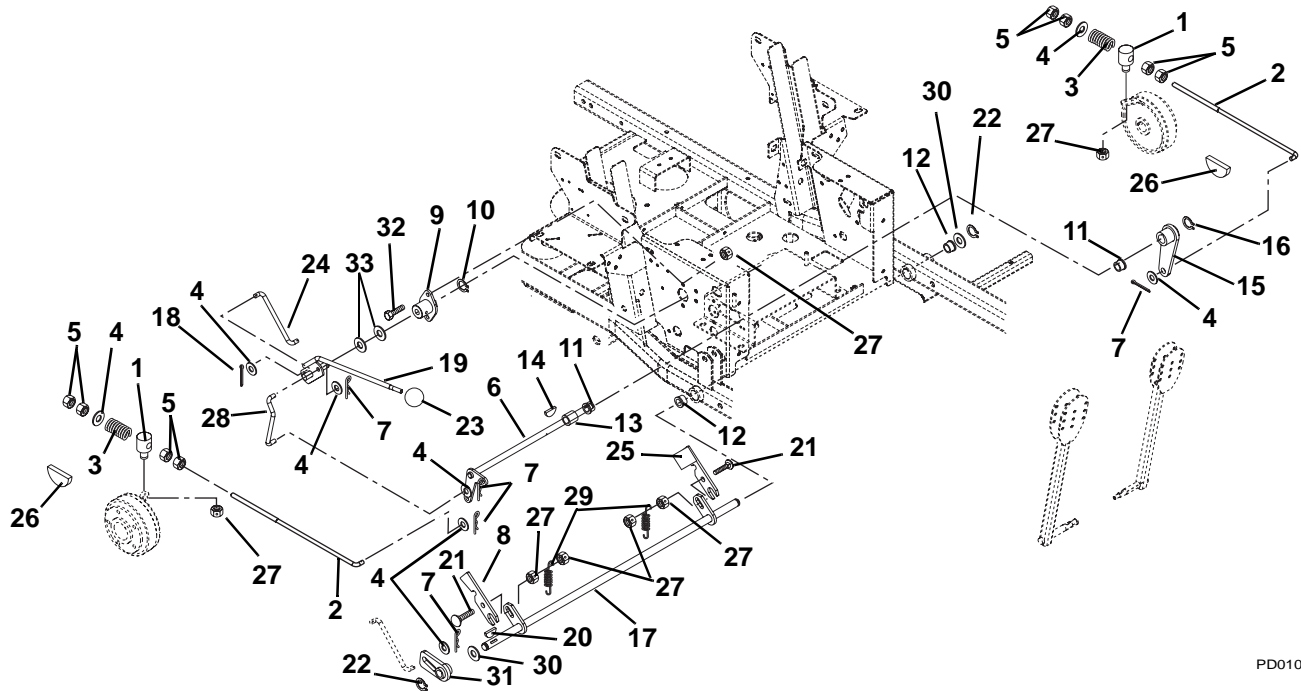
CONTROLS

Model 992045, 046, 047, 052, 066, 067, 068, 071, 084, 085, 086, 087, 088, 089, 091, 102, 103, 104, 105, 106, 107, 108

Item	Part No.	Qty.	Description
1	00395900	2	Assembly, Steering Rod .38 Rod x 7.60
2	07415400	4	Screw, Tapping .38-16 x .75 Hex Washer Head
3	05436800	4	Bushing .625 x .75 x .50
4	06436200	4	Washer, Flat Steel .403 x .812 x .065
5	05957400	6	Bolt, Hex .31-18 x 1.75 Grade 5
6	06437200	2	Washer, Flat Steel .344 x .688 x .065
7	06529400	2	Nut, Hex .38-16
8	09288651	2	Control Arm
9	09294600	2	Bushing, Flange
10	09235700	4	Eccentric
11	06543100	20	Nut, Locking Top Flange .31-18
12	09235500	1	Handle Weldment Left-Hand
	09235600	1	Handle Weldment Right-Hand
13	035172	4	Bushing, Flange Nylon .762 x 1.48 x .44
14	09235400	2	Spacer
15	09211400	2	Caplug, Handlebar
16	09246800	2	Grip, Handlebar
17	07411500	6	Screw, Tapping .31-18 x .50 Hex Washer Head
18	03652200	4	Stud, Ball
19	05957900	2	Bolt, Hex .38-16 x 1.50 Grade 5
20	06436100	4	Washer, Flat Steel .63 x 1.005 x .062
21	06542000	2	Nut, Locking Top Flange .38-16
22	09273400	2	Damper, Control
23	05947000	8	Bolt, Hex .31-18 x .75 Grade 5
24	00176400	2	Weldment, Pivot Arm
25	06308800	2	Washer, Locking .38 x .094 Regular
26	124545	2	Key, Woodruff .13 x .63
27	03704900	6	Washer, Wave
28	09289151	1	Stop, Steering Right Hand
29	09289251	1	Stop, Steering Left Hand
30	07412900	4	Screw, Tapping .38-16 x .50 Hex Washer Head
31	05958000	2	Bolt, Hex .38-16 x 1.25 Grade 5
32	06535900	4	Nut, Hex Jam .375-16
33	06529600	2	Nut, Locking Center .38-16
34	09288900	1	Bracket, Left Hand
35	09288800	1	Bracket, Right Hand
36	03101900	2	Spacer .318 x .43 x .375
37	05947500	2	Bolt, Hex .31-18 x 1.25 Grade 5
38	09289051	2	Bracket, Damper
39	07412900	2	Screw, Tapping .38-16 x .50 Hex Washer Head (091, 107)
40	09292551	1	Bracket, EFI Box Mount (091, 107)
41	06536000	3	Nut, Locking Nylon 10-24 with Insert (091, 107)
42	06116800	2	Screw, Machine 10-24 x 2.00 Hex Washer Head (091, 107)
43	06116700	1	Screw, Machine 10-24 x .50 Hex Washer Head (091, 107)
44	05974000	6	Bolt-Hex .375-16 x 1.75 Full Thread
45	05946800	1	Bolt-Hex .25-20 x .75 Grade 5
46	06439500	1	Washer, Flat Steel .265 x .50 x .087
47	06543500	1	Nut, Locking Top Flange .25-20
48	06927100	1	Cable, Hood

BRAKES

Model 992045, 046, 047, 052, 066, 067, 068, 071, 084, 085, 086, 087, 088, 089, 091, 102, 103, 104, 105, 106, 107, 108

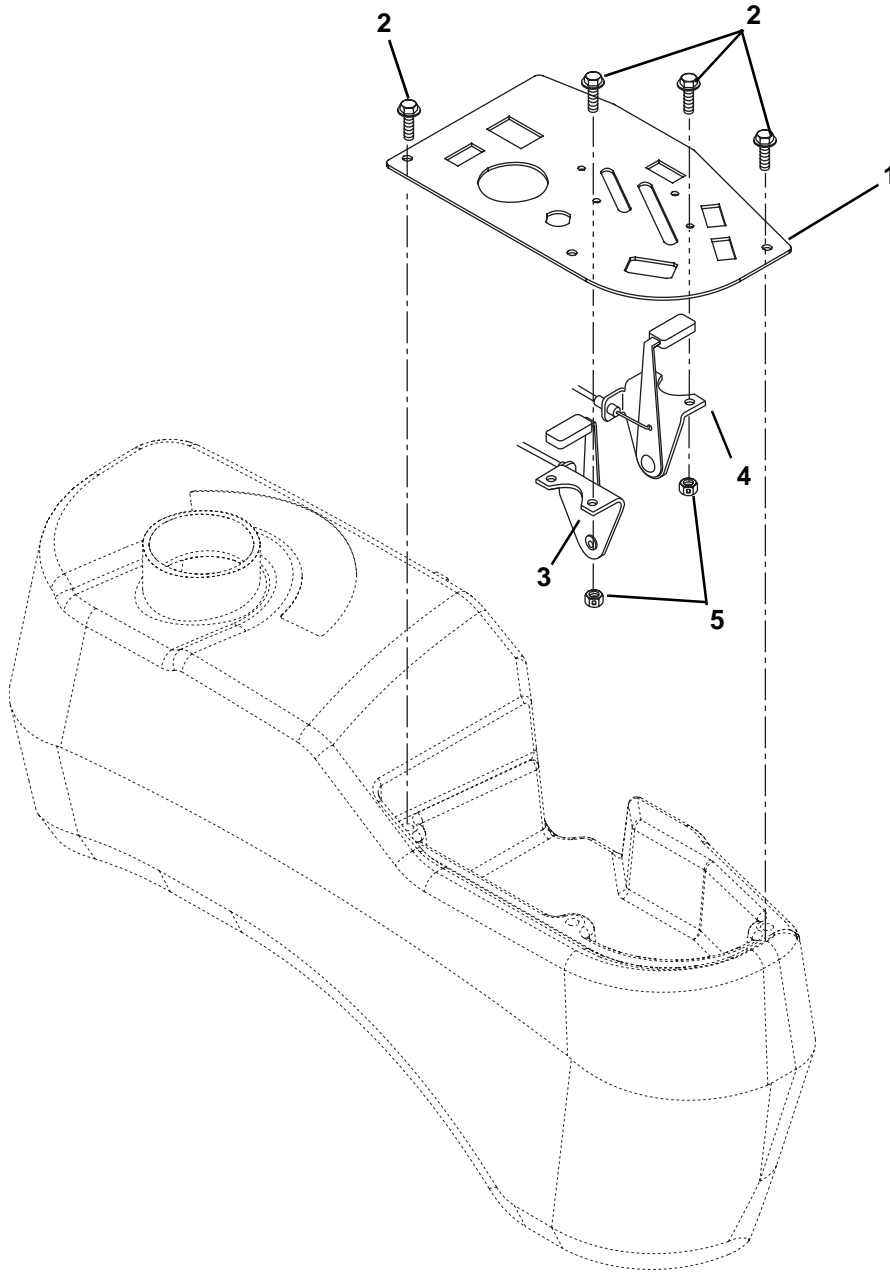


PD0100

Item	Part No.	Qty.	Description
1	09267300	2	Pivot, Brake Rod
2	09289300	2	Rod, Brake .38 x 19.00
3	08328500	2	Spring, Compression .143 x .71 x 2.00
4	06436200	8	Washer, Flat Steel .406 x .812 x .065
5	06529400	8	Nut, Hex .38-16
6	00258800	1	Shaft, Brake Cross
7	06714800	5	Pin, Hair
8	09267700	1	Slide, Interlocking Brake
9	05534700	1	Bushing, Flange
10	05709200	1	Ring, Retaining External .625 x .05
11	05518400	2	Bushing, Flange Nylon .762 x 1.00 x .58 x 1.48
12	034738	2	Bushing, Flange .515 x .75 x .745 x 1.00
13	05500900	1	Bushing, Sleeve .75 x 1.00 x .75
14	124549	1	Key, Woodruff .19 x .75 Hard #9
15	00258600	1	Arm, Brake Left Hand
16	05714600	1	Ring, Retaining External .625 x .050
17	09268000	1	Weldment, Mechanical Brake
18	06706900	1	Pin, Cotter External .09 x .75
19	00277400	1	Weldment, Brake Actuating
20	06608400	1	Key, Woodruff .13 x .63
21	06219200	2	Bolt, Round Head Square Neck .31-18 x 1.25 Grade 5
22	05717100	2	Ring, Retaining External .50 x .05
23	039360	1	Knob, Steering Lock
24	09268400	1	Linkage, Brake Actuating
25	09275900	1	Interlock, Safety Switch
26	09200600	2	Pad, Disk Brake
27	06543100	4	Nut, Locking, Top Flange .31-18
28	09268300	1	Linkage, Brake Actuating
29	08314100	2	Spring, Tension .063 x .44 x 1.56
30	06439200	2	Washer, Flat Steel .505 x 1.00 x .062
31	09268100	1	Weldment, Parking Brake Hub
32	05947000	2	Bolt, Hex .31-18 x .75 Grade 5
33	06545100	2	Washer, Flat Steel .630 x 1.250 x .062

CONTROL PANEL

Model 992045, 046, 047, 052, 066, 067, 068, 071, 084, 085, 086, 087, 088, 089, 091, 102, 103, 104, 105, 106, 107, 108

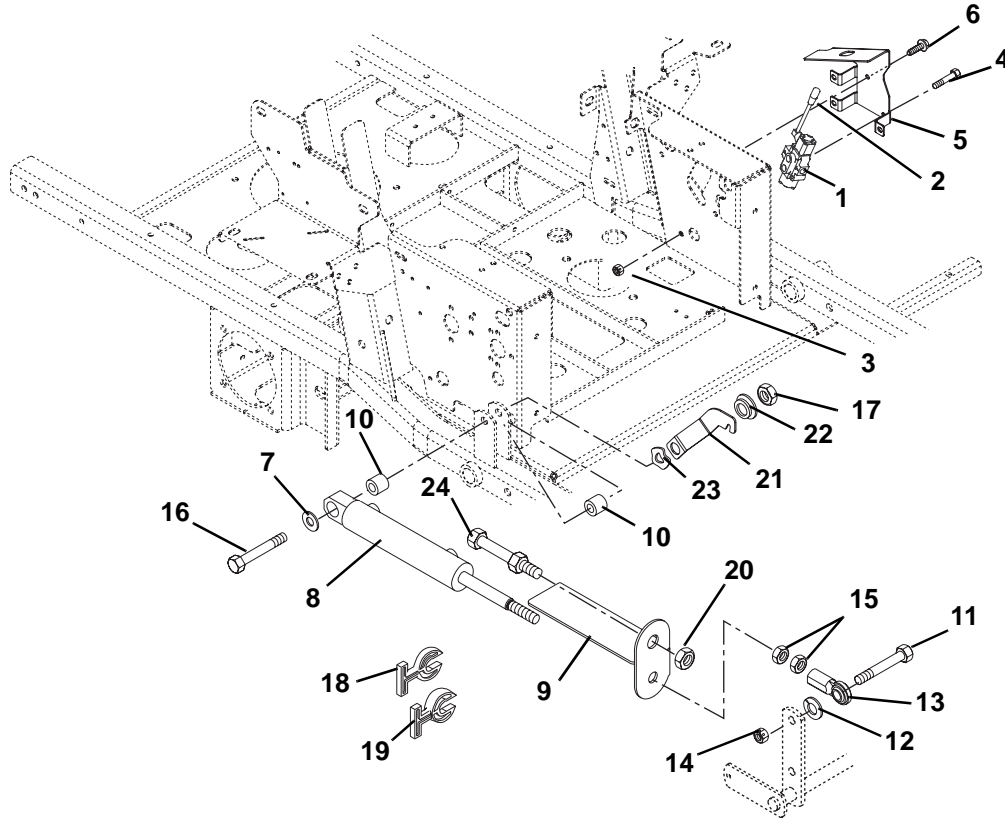


PD2320

Item	Part No.	Qty.	Description
1	09292800	1	Panel, Control
2	06116700	7	Screw, Machine 10-24 x .50 Hex Washer Head (045, 046, 047, 052, 066, 067, 068, 072, 087, 088, 089, 102)
	06116700	5	Screw, Machine 10-24 x .50 Hex Washer Head (091, 107)
3	09236700	1	Throttle, Control
4	06946300	1	Choke Control
5	06536000	4	Nut, Locking Nylon 10-24 With Insert

LIFT VALVE AND CYLINDER

Model 045, 046, 047, 052, 066, 067, 068, 071, 084, 085, 086, 091, 104, 106, 107, 108

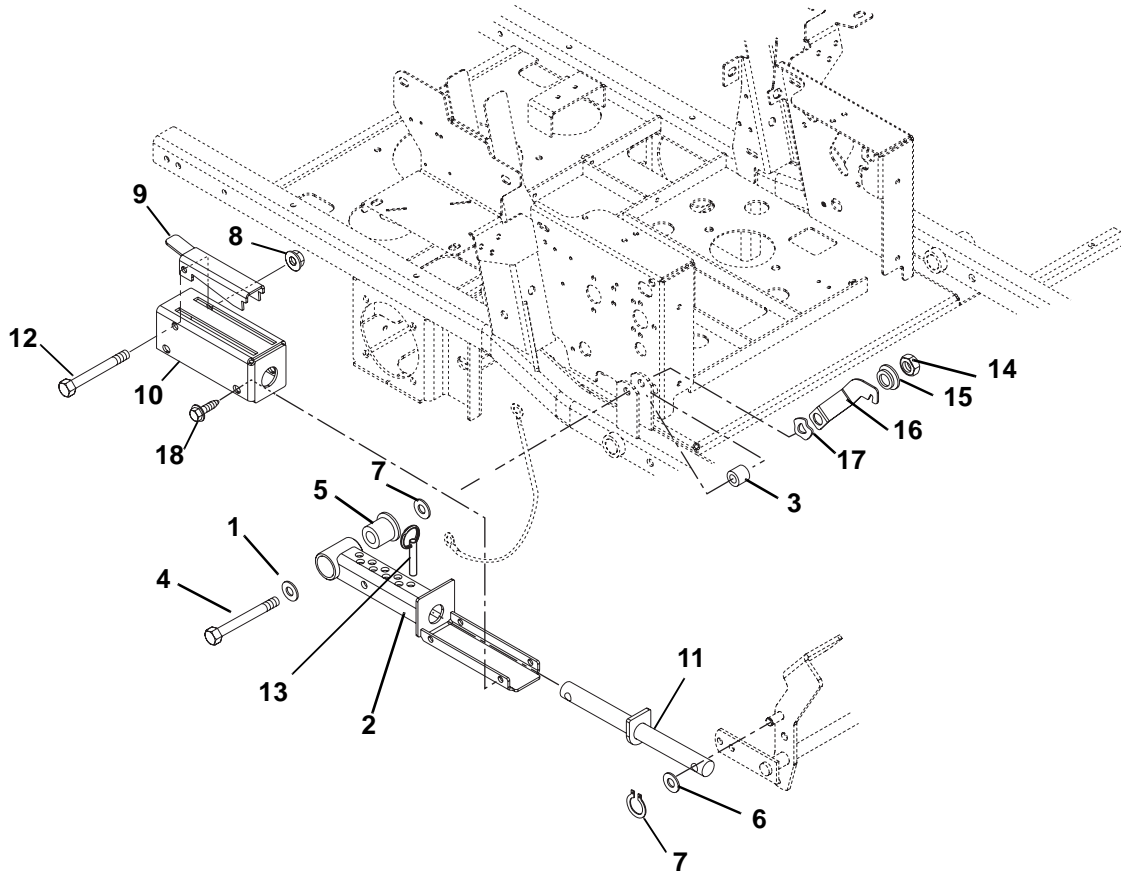


PD0140

Item	Part No.	Qty.	Description
1	09265100	1	Valve, Hydraulic
2	21542500	AR	Knob (Service Only)
3	06543100	2	Nut, Locking Top Flange .31-18
4	05952600	2	Bolt, Hex .31-18 x 2.5 Grade 5
5	09290251	1	Bracket, Valve Mounting
6	07412900	3	Screw, Tapping .38-16 x .50 Hex Washer Head
7	06445000	1	Washer, Flat Steel .515 x 1.625 x .25
8	09264800	1	Cylinder, Hydraulic Lift
9	00184551	1	Strap, Cut Indicator / Guard
10	09215200	2	Bushing .516 x 1.00 x 1.05
11	05930700	1	Bolt, Hex .62-11 x 2.25 Grade 8
12	06309500	1	Washer, Lock .62 x .156
13	09221600	1	Rod End, Right Hand Female .625
14	06535300	1	Nut, Locking Center .62-11
15	06539600	2	Nut, Jam .625-18
16	05960100	1	Bolt, Hex .50-13 x 3.75 Grade 5
17	06543600	1	Nut, Locking Top Flange .50-13
18	09212200	6	Stop, Cylinder .34 Thick
19	09212300	6	Stop, Cylinder .68 Thick
20	06539900	1	Nut, Jam .75-16
21	09291200	1	Latch, Footboard
22	05532100	1	Bushing, Flange .515 x .75 x .275 x 1.12
23	09252000	1	Washer, Wave .076 x 1.12 x .08
24	09260800	1	Post

MECHANICAL LIFT

Model 992087, 088, 089, 102, 103, 105

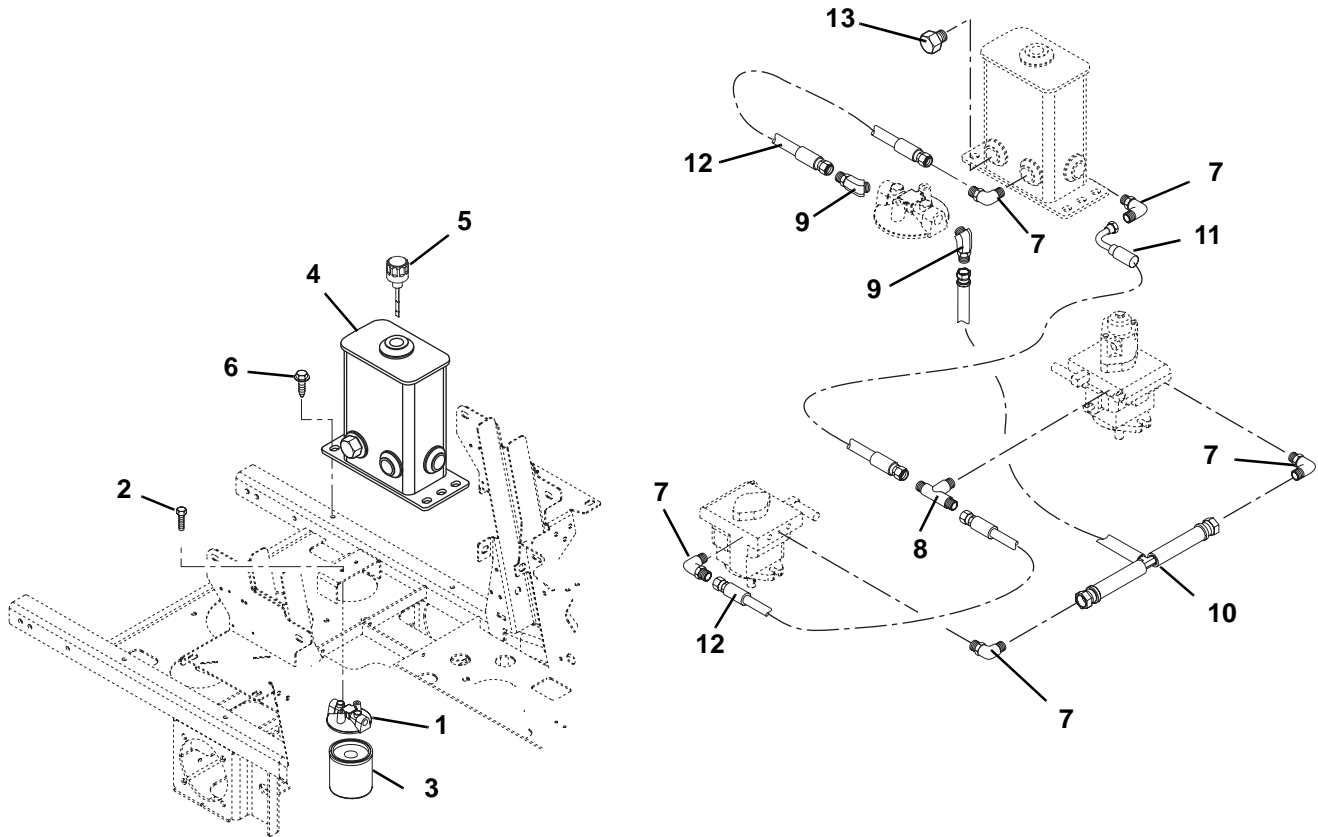


PD0141

Item	Part No.	Qty.	Description
1	06430200	3	Washer, Flat Steel .531 x 1.250 x .10
2	09286251	1	Weldment, Mechanical Lift
3	09215200	1	Bushing .516 x 1.00 x 1.05
4	05962200	1	Bolt, Hex .50-13 x 5.00 Grade 5
5	07053100	1	Bearing, Pedestal Powdered Metal
6	06442800	1	Washer, Flat Steel .656 x 1.310 x .095
7	05709200	1	Ring, Retaining External .625 x .050
8	06542000	1	Nut, Locking Top Flange .38-16
9	09299651	1	Lock-Up, Mechanical Lift
10	09299451	1	Weldment, Mechanical Lift Cover
11	09291500	1	Weldment, Mechanical Lift Shaft
12	05961100	1	Bolt, Hex .38-16 x 3.25 Grade 5
13	01593500	1	Pin, Spring Ball .375 O.D. x 1.50
14	06543600	1	Nut, Locking Top Flange .50-13
15	05532100	1	Bushing, Flange .515 x .75 x .275 x 1.12
16	09291200	1	Latch, Footboard
17	09252000	1	Washer, Wave .076 x 1.12 x .08
18	07412900	4	Screw, Tapping .38-16 x .50

HYDRAULIC TANK, FILTER AND PUMP TO TANK CIRCUIT

Model 992045, 046, 047, 052, 066, 067, 068, 071, 084, 085, 086, 087, 088, 089, 091, 102, 103, 104, 105, 106, 107, 108



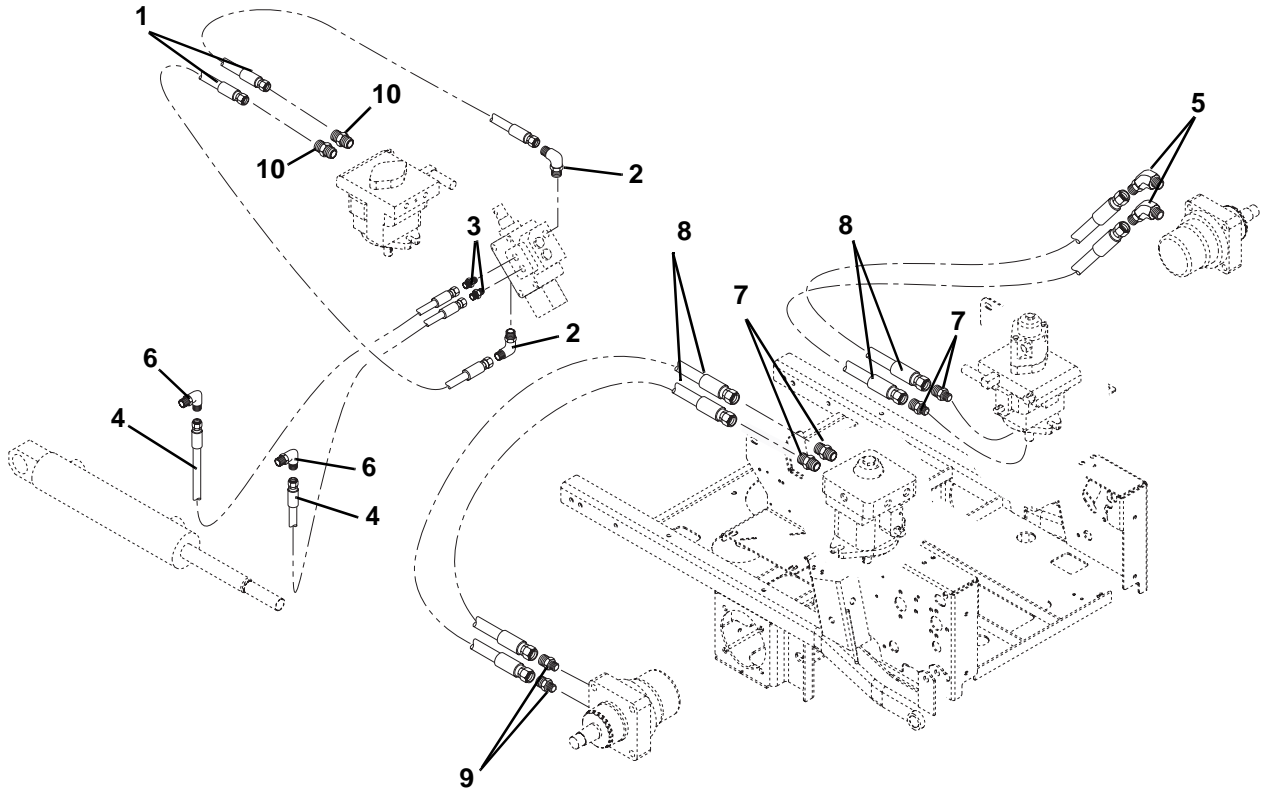
PD0152

Item	Part No.	Qty.	Description
1	09419900	1	Head, Filter
2	05900008	2	Bolt, Hex .25-20 x .50 Epoxy Grade 5
3	09414200	1	Oil Filter
4	00161051	1	Weldment, Hydraulic Tank
5	00346100	1	Hydraulic Tank Dipstick
6	07415400	2	Screw, Tapping .38-16 x .75 Hex Washer Head
7	07069600	5	Fitting, Hydraulic, 90 Degree Elbow, Steel M8F-M80
8	07069500	1	Fitting, Hydraulic Tee M80-M80-M80
9	07069900	2	Fitting, Hydraulic 45° M80-M120
10	00364800	1	Hose, Tee Assembly, .50
11	00364600	1	Hose, Hydraulic
12	00364700	2	Hose, Hydraulic
13	07000006	1	Plug, Hex, .75-16 O-Ring

*Use Synthetic Oil 5W-20 or 5W-30 Rating.

DECK LIFT AND MOTOR TO PUMP CIRCUITS

Model 992045, 046, 047, 052, 066, 067, 068, 071, 084, 085, 086, 087, 088, 089, 091, 102, 103, 104, 105, 106, 107, 108

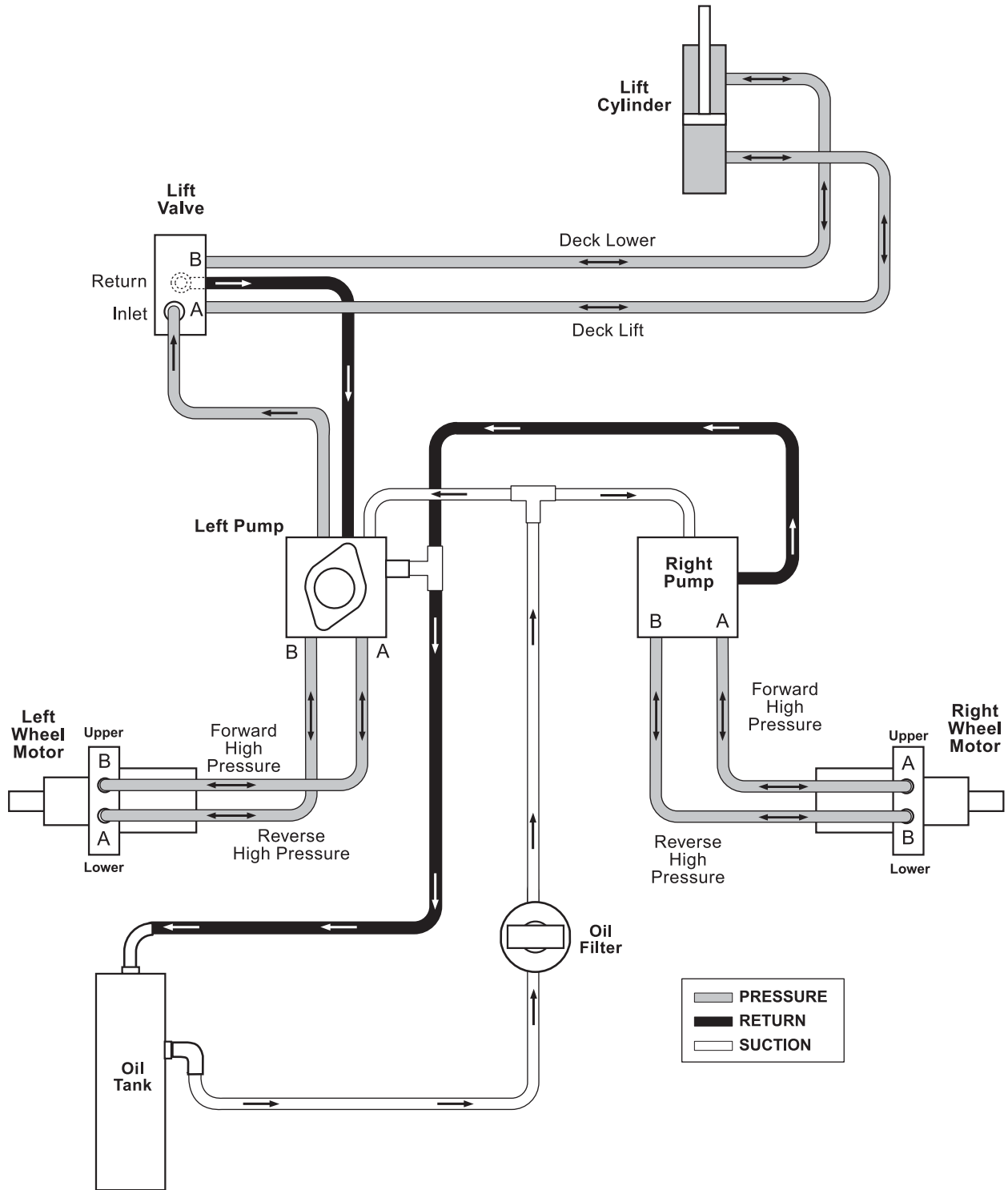


PD0160

Item	Part No.	Qty.	Description
1	09291800	2	Hose, Hydraulic (045, 046, 047, 052, 066, 067, 068, 071, 084, 085, 086, 091, 104, 106, 107, 108)
2	07067500	2	Hydraulic, Fitting Elbow (045, 046, 047, 052, 066, 067, 068, 071, 084, 085, 086, 091, 104, 106, 107, 108)
3	07063800	2	Adapter (4-6F5OLO) (045, 046, 047, 052, 066, 067, 068, 071, 084, 085, 086, 091, 104, 106, 107, 108)
4	09275400	2	Hose, Hydraulic (045, 046, 047, 052, 066, 067, 068, 071, 084, 085, 086, 091, 104, 106, 107, 108)
5	07063500	2	Fitting, Hydraulic (8-10 V5OLO)
6	07063900	2	Fitting, Hydraulic (4 C5OLO) (045, 046, 047, 052, 066, 067, 068, 071, 084, 085, 086, 091, 104, 106, 107, 108)
7	07059900	4	Adapter, Face Seal 8 x 8 .50 O-Ring
8	04925900	4	Hose, Hydraulic .50
9	07062100	2	Adapter, Hydraulic Steel (M10 O-M8F)
10	07063700	2	Fitting, Hydraulic (4 F5OLO)

HYDRAULIC DIAGRAM

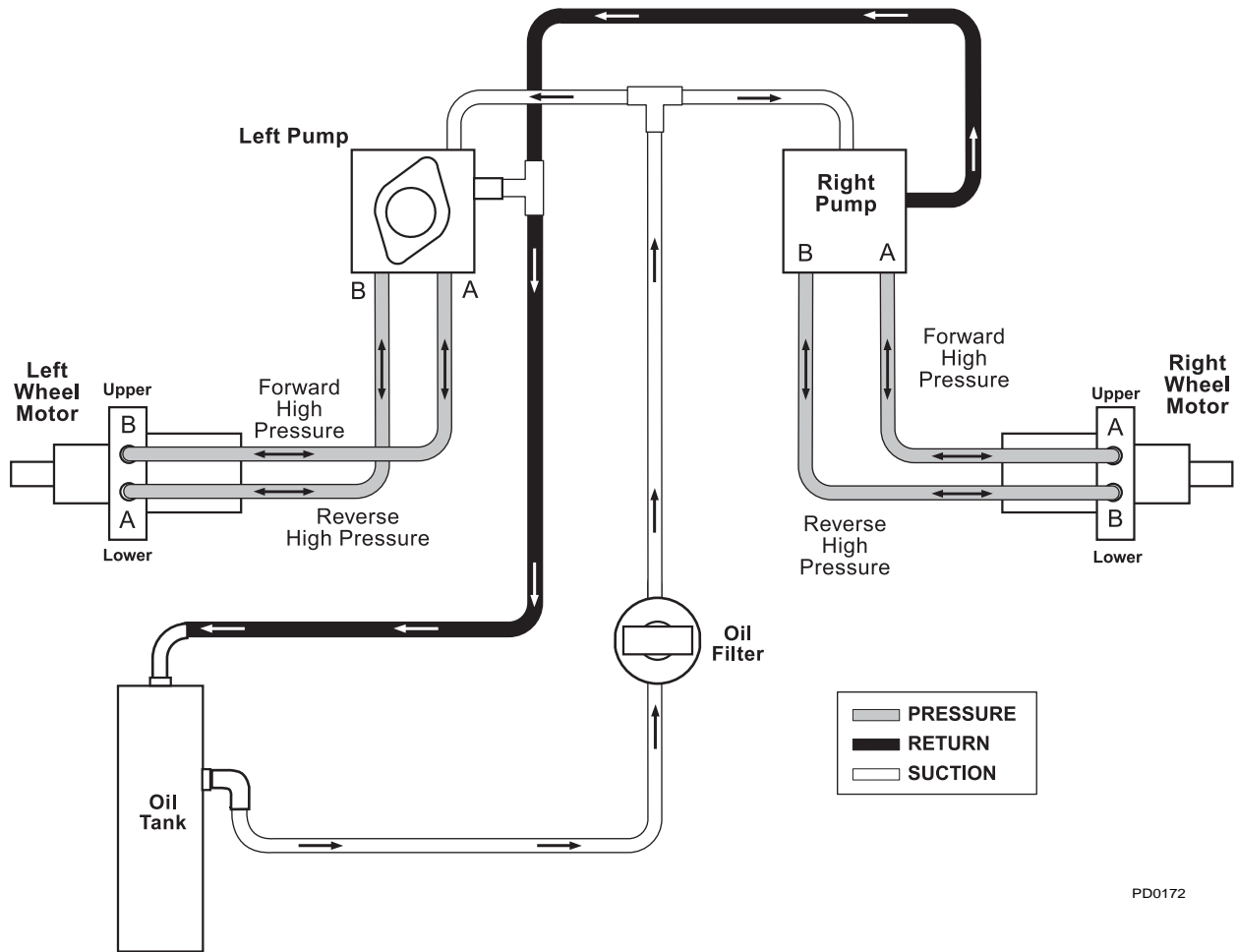
Model 992045, 046, 047, 052, 066, 067, 068, 071, 084, 085, 086, 091, 102, 104, 106, 107, 108



PD0171

HYDRAULIC DIAGRAM - MECHANICAL LIFT

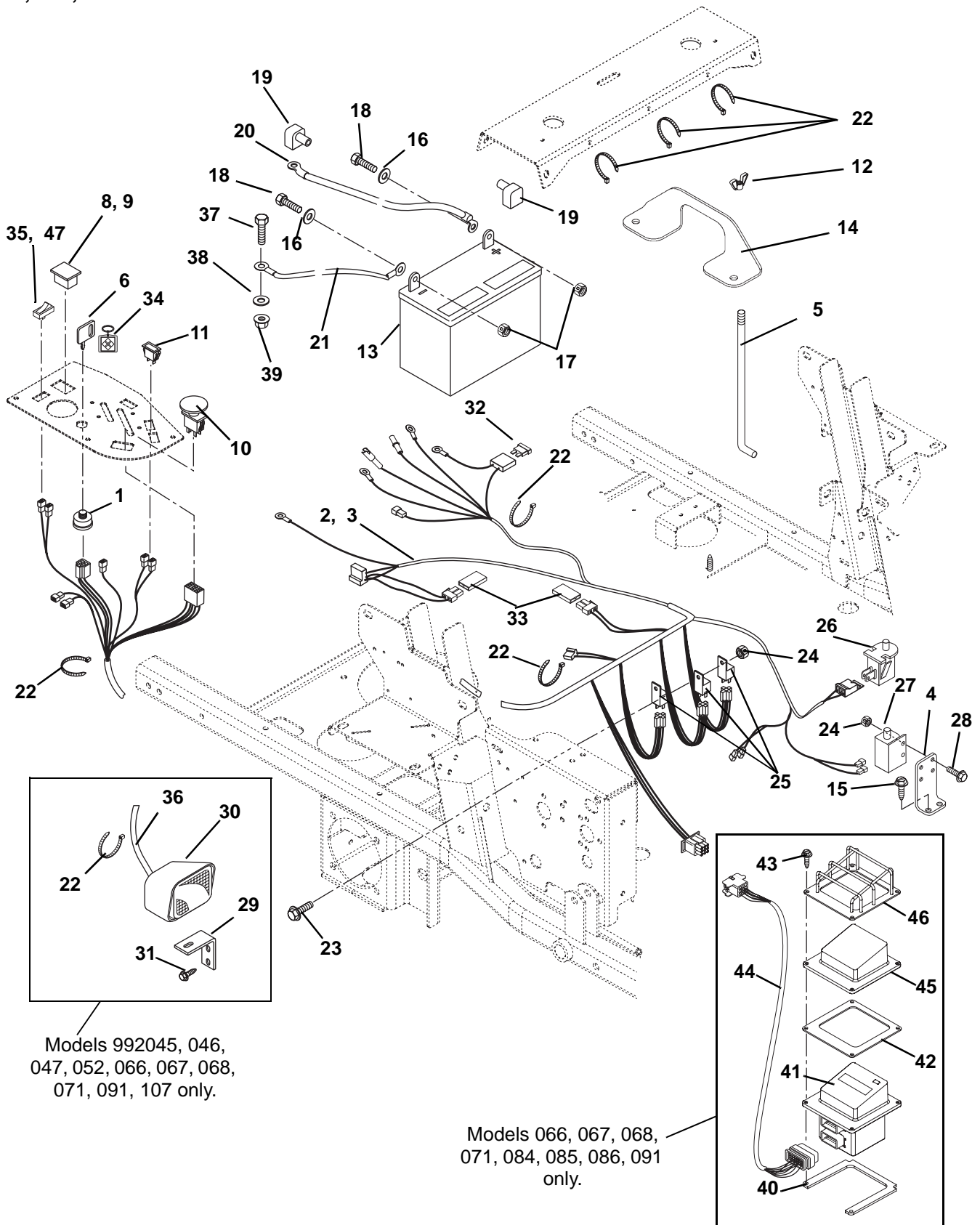
Model 992087, 088, 089, 102, 103, 105



PD0172

ELECTRICAL SYSTEM

Model 992045, 046, 047, 052, 066, 067, 068, 071, 084, 085, 086, 087, 088, 089, 091, 102, 103, 104, 105, 106, 107, 108



Models 992045, 046, 047, 052, 066, 067, 068, 071, 091, 107 only.

Models 066, 067, 068, 071, 084, 085, 086, 091 only.

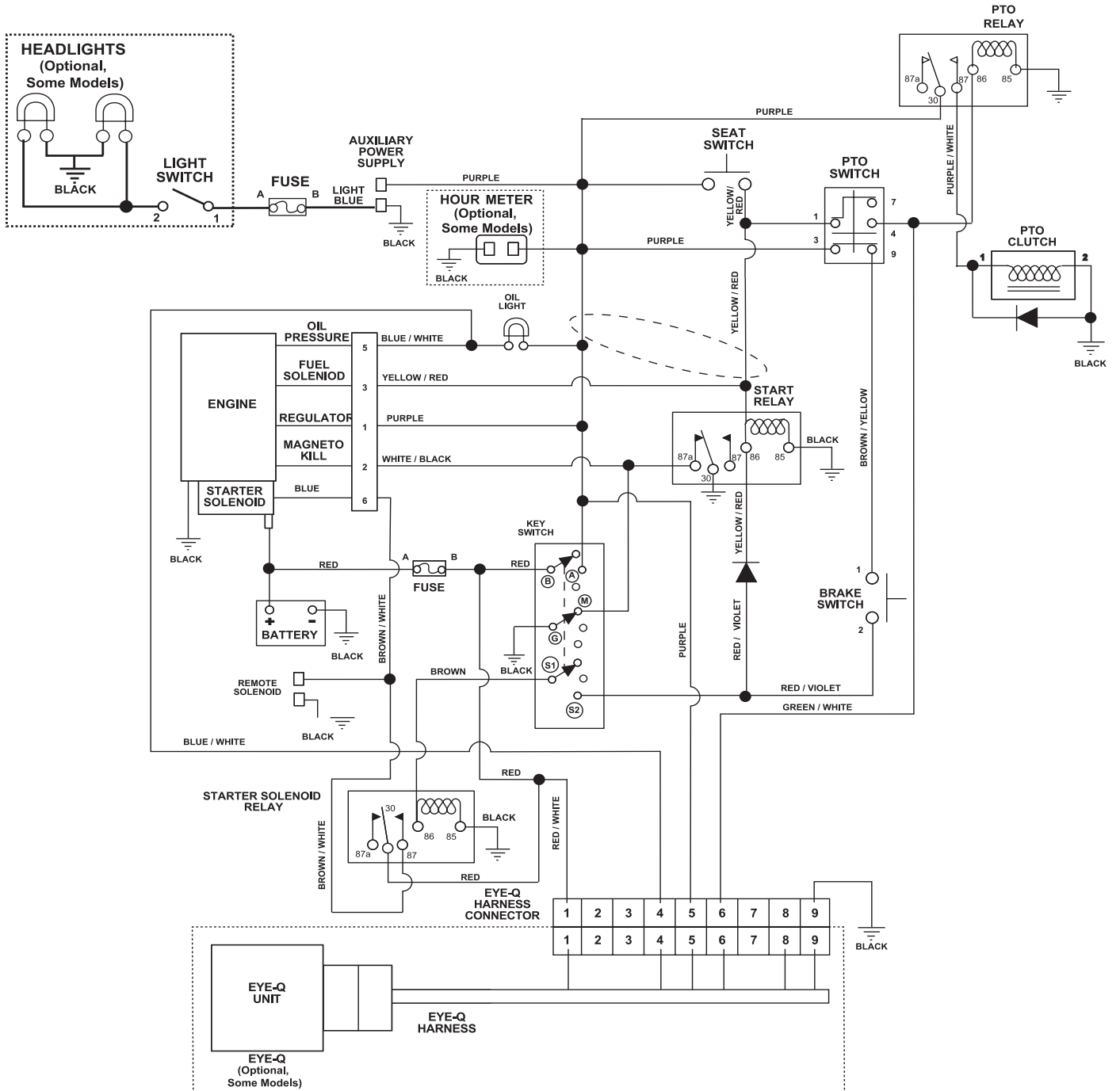
ELECTRICAL SYSTEM

Model 992045, 046, 047, 052, 066, 067, 068, 071, 084, 085, 086, 087, 088, 089, 091, 102, 103, 104, 105, 106, 107, 108

Item	Part No.	Qty.	Description
1	09089700	1	Switch, Ignition
2	00359400	1	Harness, Z-6 Pin Wiring (EYE-Q) (045, 046, 047, 052, 066, 067, 068, 071, 087, 088, 089, 102, 103, 105, 107)
	00356200	1	Harness, L/C Gas (084, 085, 086, 103, 104, 105, 106, 108)
3	00360400	1	Harness, EFI-Monster Wiring (EYE-Q) (091, 107)
4	09275851	1	Mount, Safety Switch
5	09291900	2	Rod, Battery Holddown .25 x 6.62
6	09287000	1	Key, with Shield
7	21510400	NS	Ignition Key Set
8	00539300	1	Plug, Hour Meter (066, 067, 068, 071, 084, 085, 086, 091)
9	04935700	1	Hour Meter (045, 046, 047, 052, 066, 067, 068, 071, 087, 088, 089, 102, 103, 105, 107)
10	01545600	1	Switch, PTO Clutch
11	050673	1	Light-Indicator Kit (045, 046, 047, 052, 066, 067, 068, 071, 087, 088, 089, 102, 103, 105, 107)
	050673	2	Light-Indicator Kit (091, 107)
12	06537500	2	Nut-Locking Wing .25-20
13	01554800	1	Battery, 12V
14	00428151	1	Hold Down, Battery
15	07412000	2	Screw-Tapping .25-20 x .50 Hex Washer Head
16	06437300	2	Washer-Flat-Steel .281 x .620 x .065
17	06543500	2	Nut-Locking-Top-Flange .25-20
18	05946800	2	Bolt-Hex .25-20 x .75 Grade 5
19	00525800	2	Battery Terminal Boot, Red
20	02727200	1	Starter Cable 13 in.
21	02518900	1	Ground Cable
22	036313	12	Cable Tie (045, 046, 047, 052, 066, 067, 068, 071, 087, 088, 089, 102, 103, 105, 107)
23	06116700	2	Screw-Machine 10-24 x .50 Hex Washer Head
24	06536000	4	Nut-Locking-Nylon 10-24 With Insert
25	040216	AR	Relay (Included with Harness)
26	02754100	AR	Switch- Snap Mounting
27	03657100	1	Switch-Single Pole
28	06116900	2	Screw-Machine 10-24 x .75 Hex Washer Head
29	09287551	2	Bracket, Headlight Mounting Left (045, 046, 047, 052, 066, 067, 068, 071, 084, 085, 086, 091, 104, 106, 107, 108)
30	02463600	2	Headlight (045, 046, 047, 052, 066, 067, 068, 071, 084, 085, 086, 091, 104, 106, 107, 108)
31	07412900	4	Screw-Tapping .38-16 x .50 Hex Washer Head (045, 046, 047, 052, 066, 067, 068, 071, 084, 085, 086, 091, 104, 106, 107, 108)
32	00524600	AR	Fuse, 30 Amp (Included with Harness)
33	09293500	2	Diode, Connector Shell
34	045842	1	Key Chain
35	08973300	1	Switch, Light (045, 046, 047, 052, 066, 067, 068, 071, 084, 085, 086, 091, 104, 106, 107, 108)
36	09279200	1	Harness, Headlight Kit (045, 046, 047, 052, 066, 067, 068, 071, 091, 107, 108)
37	05947000	1	Bolt-Hex .31-18 x .75 Grade 5
38	06437200	1	Washer-Flat-Steel .344 x .688 x .065
39	06543100	1	Nut-Locking-Top-Flange .31-18
40	00252251	1	Spacer, Enclosure Mounting (Bottom) (066, 067, 068, 071, 084, 085, 086, 091)
41	00251600	1	Assembly, Eye-Q (066, 067, 068, 071, 084, 085, 086, 091)
42	05600006	1	Gasket, Eye-Q (066, 067, 068, 071, 084, 085, 086, 091)
43	06100002	4	Screw, Machine 10-24 x 1.00 (066, 067, 068, 071, 084, 085, 086, 091)
44	00288900	1	Harness, Eye-Q (066, 067, 068, 071, 084, 085, 086, 091)
45	00353900	1	Guard, Element (066, 067, 068, 071, 084, 085, 086, 091)
46	00270300	1	Guard, Vinyl Eye-Q (066, 067, 068, 071, 084, 085, 086, 091)
47	09003300	1	Switch, Blank (087, 088, 089, 102, 103, 105)

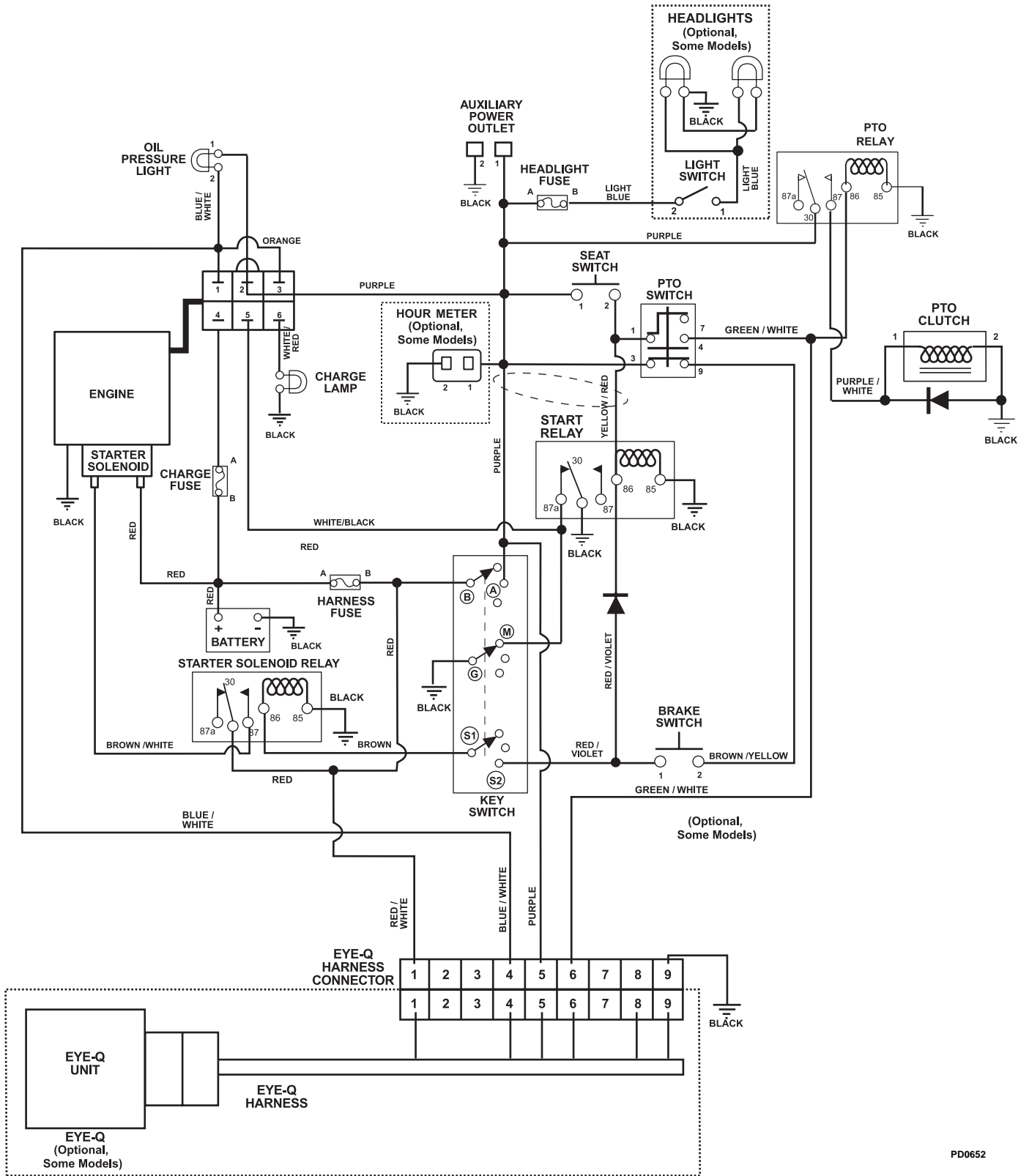
WIRING DIAGRAM

Model 992045, 046, 047, 052, 066, 067, 068, 071, 087, 088, 089, 102



WIRING DIAGRAM

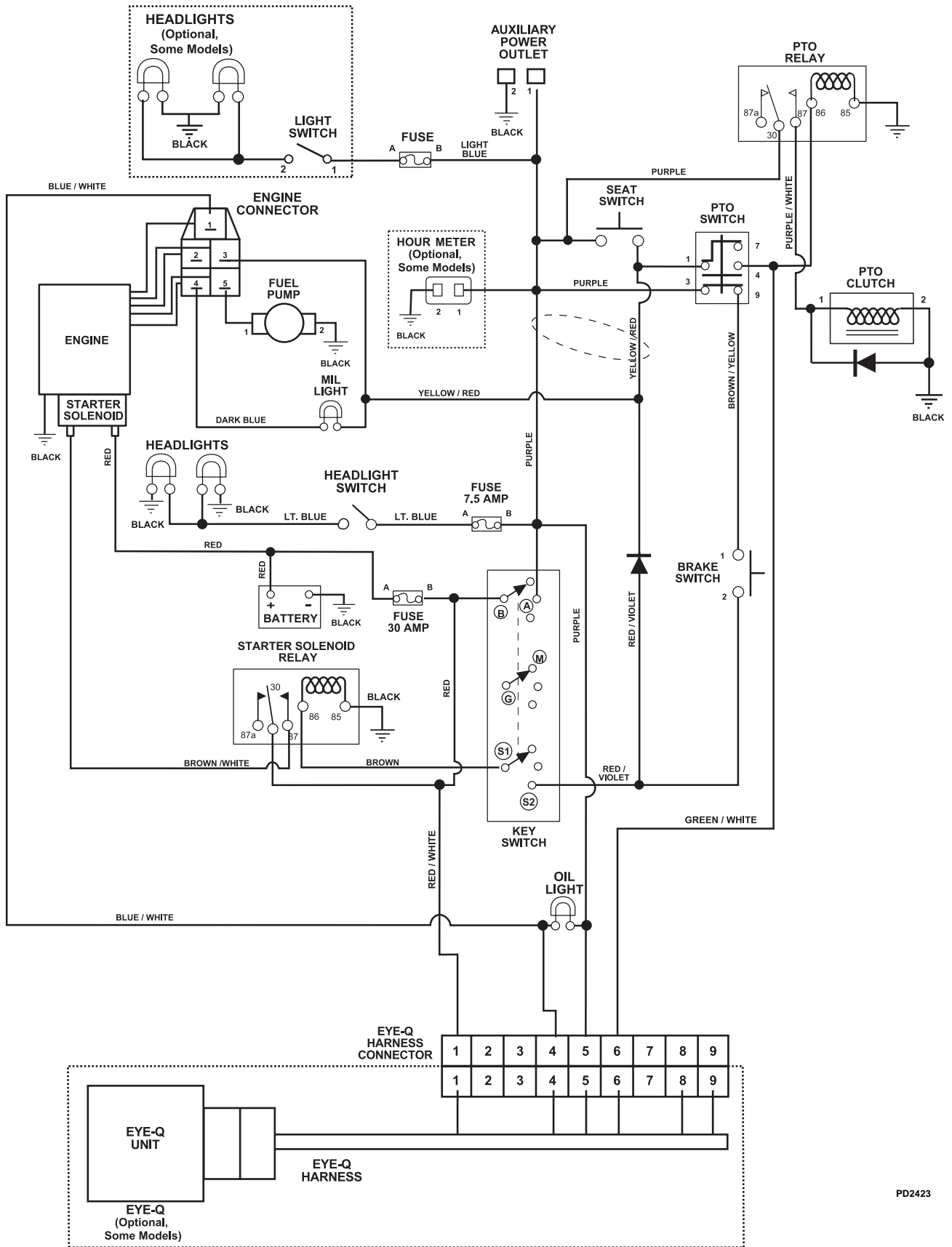
Model 992084, 085, 086, 103, 104, 105, 106, 108



PD0652

WIRING DIAGRAM

Model 992091, 107



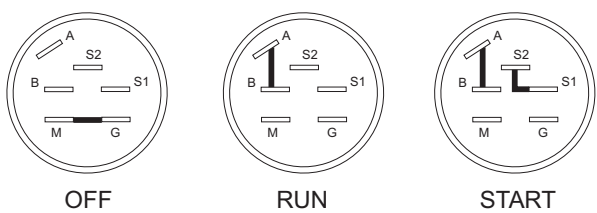

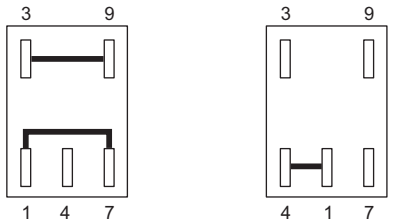
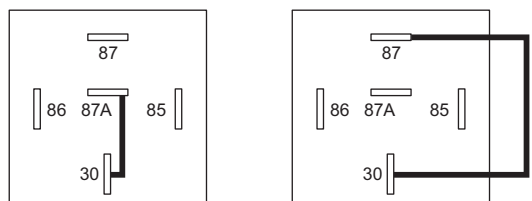

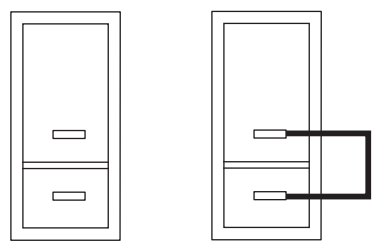
PD2423

CONTINUITY DIAGRAM

Model 992045, 046, 047, 052, 066, 067, 068, 071, 084, 085, 086, 087, 088, 089, 091, 102, 103, 104, 105, 106, 107, 108

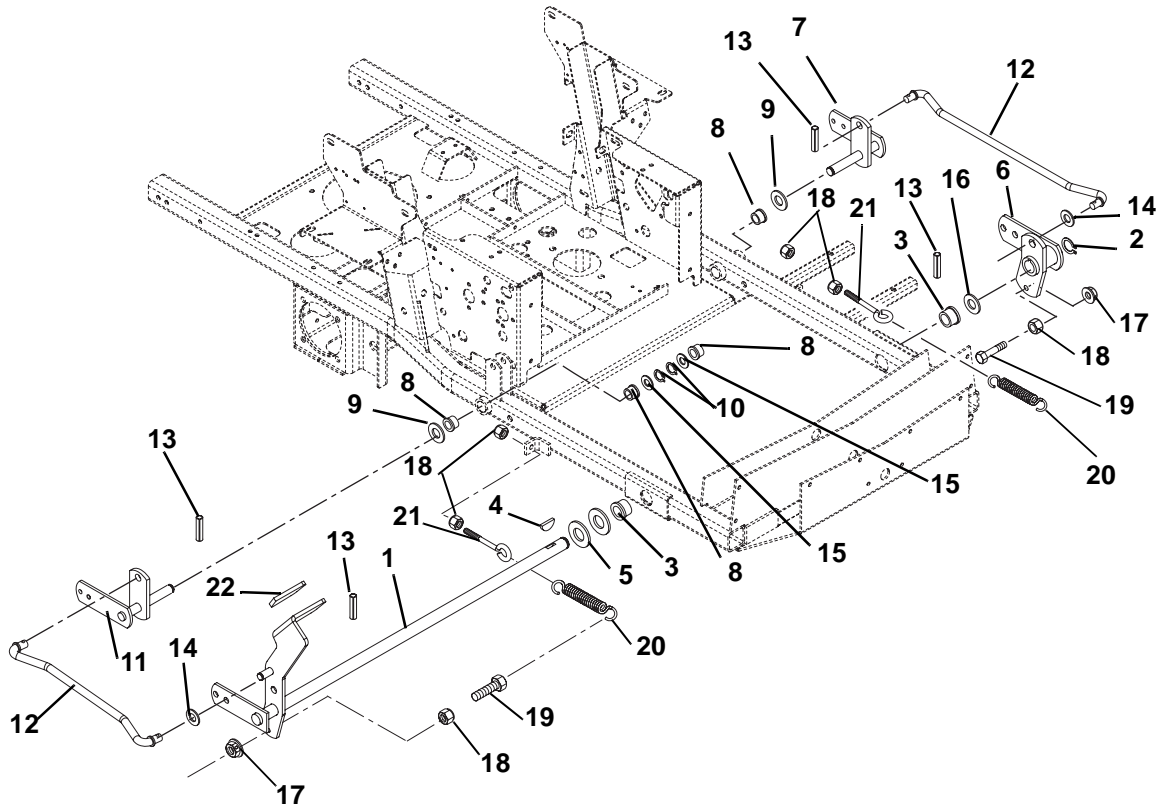
The diagrams below show the various states of connection for electrical components.
The solid lines on switches show continuity.

NOTE: All switches are viewed from the rear.

<p>Key Switch (09089700)</p>  <p style="text-align: center;">OFF RUN START</p>	<p>Seat Switch (045036)</p>  <p style="text-align: center;">OPERATOR OFF SEAT OPERATOR ON SEAT</p>
<p>PTO Switch (01545600)</p>  <p style="text-align: center;">DISENGAGED (down position) ENGAGED (up position)</p>	<p>Relay (040216)</p>  <p style="text-align: center;">NOT ENERGIZED ENERGIZED</p>
<p>Brake Switch (03657100)</p>  <p style="text-align: center;">BUTTON IN BUTTON OUT</p>	<p>Light Switch (08973300)</p>  <p style="text-align: center;">OFF ON</p>
	<small>PD0190</small>

DECK LIFT

Model 992045, 046, 047, 052, 066, 067, 068, 071, 084, 085, 086, 087, 088, 089, 091, 102, 103, 104, 105, 106, 107, 108

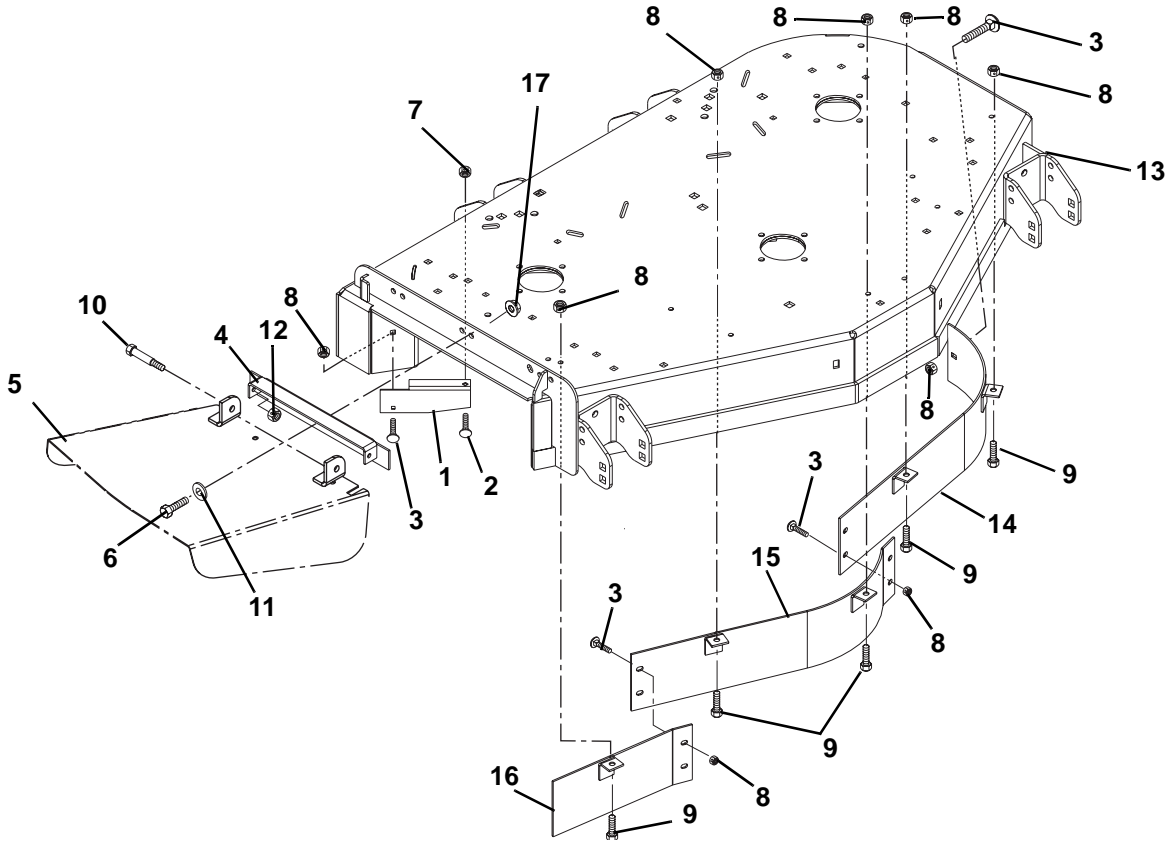


PD0122

Item	Part No.	Qty.	Description
1	09289700	1	Lift Mower (045, 046, 047, 052, 066, 067, 068, 071, 084, 085, 086, 091, 104, 106, 107, 108)
	09291300	1	Lift, Mower (087, 088, 089, 102, 103, 105)
2	050203	1	Ring, Retaining External 1.00 x .078
3	018355	2	Bushing, Flange Nylon 1.020 x 1.385 x .75 x 1.75
4	124553	1	Key, Woodruff .25 x 1.00
5	06443000	2	Washer, Flat Steel 1.062 x 2.00 x .134
6	09289800	1	Weldment, Lift Arm Front
7	09290000	1	Weldment, Lift Arm Shaft Left Hand
8	010174	4	Bushing, Flange Nylon .762 x 1.00 x .58 x 1.48
9	036407	2	Washer, Hardened Steel .758 x 1.23 x .031
10	026300	2	Ring, Retaining External .689 x .077
11	09289900	1	Weldment, Lift Arm Shaft Right Hand
12	00185800	2	Rod, Lift Assist
13	05800001	4	Pin-Roll .250 x 1.25 Stainless Steel
14	06445100	2	Washer-Flat-Steel .630 x 1.25 x .062
15	06444200	2	Washer, Flat Steel .755 x 1.25 x .125
16	06435300	1	Washer, Hardened Thrust 1.00 x 1.55 x .03
17	06542000	2	Nut, Locking-Top-Flange .38-16 (087, 088, 089, 102, 103, 105)
18	06529400	6	Nut, Hex .38-16 (087, 088, 089, 102, 103, 105)
19	05958500	2	Bolt, Hex .38-16 x 1.75 Grade 5 (087, 088, 089, 102, 103, 105)
20	08319000	2	Spring, Tension .162 x 1.25 x 8.25 (087, 088, 089, 102, 103, 105)
21	07030000	2	Bolt, Eye .375-16 x 2.50 (087, 088, 089, 102, 103, 105)
22	00385300	1	Grip, Foot Pedal

DECK, DISCHARGE CHUTE AND BAFFLES

Model 992045, 046, 047, 052, 066, 067, 068, 071, 084, 085, 086, 087, 088, 089, 091, 102, 103, 104, 105, 106, 107, 108



PD0210

Item	Part No.	Qty.	Description
1	09096051	1	Deflector- 72 in. (086, 091, 107)
	09238451	1	Deflector- 60 in. (046, 047, 067, 068, 085, 088, 089, 105, 106)
	04921951	1	Deflector- 52 in. (045, 052, 066, 071, 084, 087, 102, 103, 104)
2	06223900	1	Bolt-Round Head Square Neck .38-16 x .75 Grade 5
3	06215700	6	Bolt-Round Head Square Neck .31-18 x .75 Grade 5
4	09286753	1	Weldment, Discharge Chute Bracket (045, 052, 066, 071, 084, 087, 102, 103, 104)
	00253253	1	Weldment, Discharge Chute Bracket (046, 047, 067, 068, 085, 086, 088, 089, 105, 106, 107)
5	00252953	1	Chute-Discharge (045, 052, 066, 071, 084, 087, 102, 103, 104)
	00198253	1	Chute-Discharge (046, 047, 067, 068, 085, 088, 089, 105, 106)
	09096953	1	Chute-Discharge (086, 091, 107)
6	05948700	3	Bolt-Hex .38-16 x 1.00 Grade 5
7	06542000	1	Nut-Locking-Top-Flange .38-16
8	06543100	11	Nut, Locking-Top-Flange .31-18
9	05947000	5	Bolt, Hex .31-18 x .75 Grade 5
10	07056500	2	Bolt, Shoulder .38-16 x .50 Socket Head
11	06435700	3	Washer, Flat Steel .38 x .875 x .083 (045, 052, 066, 071, 084, 087, 102, 103, 104)
12	06529600	2	Nut, Locking-Center .38-16
13	09284453	1	Weldment, 52 in. Mower Deck (045, 052, 066, 071, 084, 087, 102, 103, 104)
	09288253	1	Weldment, 60 in. Mower Deck (046, 047, 067, 068, 085, 088, 089, 105, 106)
	09292953	1	Weldment, 72 in. Mower Deck- Float (086, 091, 107)
14	04921651	1	Weldment, Upper Baffle Left 52 in. (045, 052, 066, 071, 084, 087, 102, 103, 104)
	09241651	1	Weldment, Upper Baffle Left 60 in. (046, 047, 067, 068, 085, 088, 089, 105, 106)
	09096451	1	Weldment, Baffle, Left Front-72 in. (086, 091, 107)
15	04921751	1	Weldment, Baffle, Center Front 52 in. (045, 052, 066, 071, 084, 087, 102, 103, 104)
	09241751	1	Weldment, Baffle, Center Front 60 in. (046, 047, 067, 068, 085, 088, 089, 105, 106)
	09096351	1	Weldment, Baffle, Center Front 72 in. (086, 091, 107)
16	04921851	1	Weldment, Baffle, Right Front 52 in. (045, 052, 066, 071, 084, 087, 102, 103, 104)
	09241851	1	Weldment, Baffle, Right Front 60 in. (046, 047, 067, 068, 085, 088, 089, 105, 106)
	09096551	1	Weldment, Baffle, Right Front 72 in. (086, 091, 107)
17	06534900	3	Nut, Flange .375-16

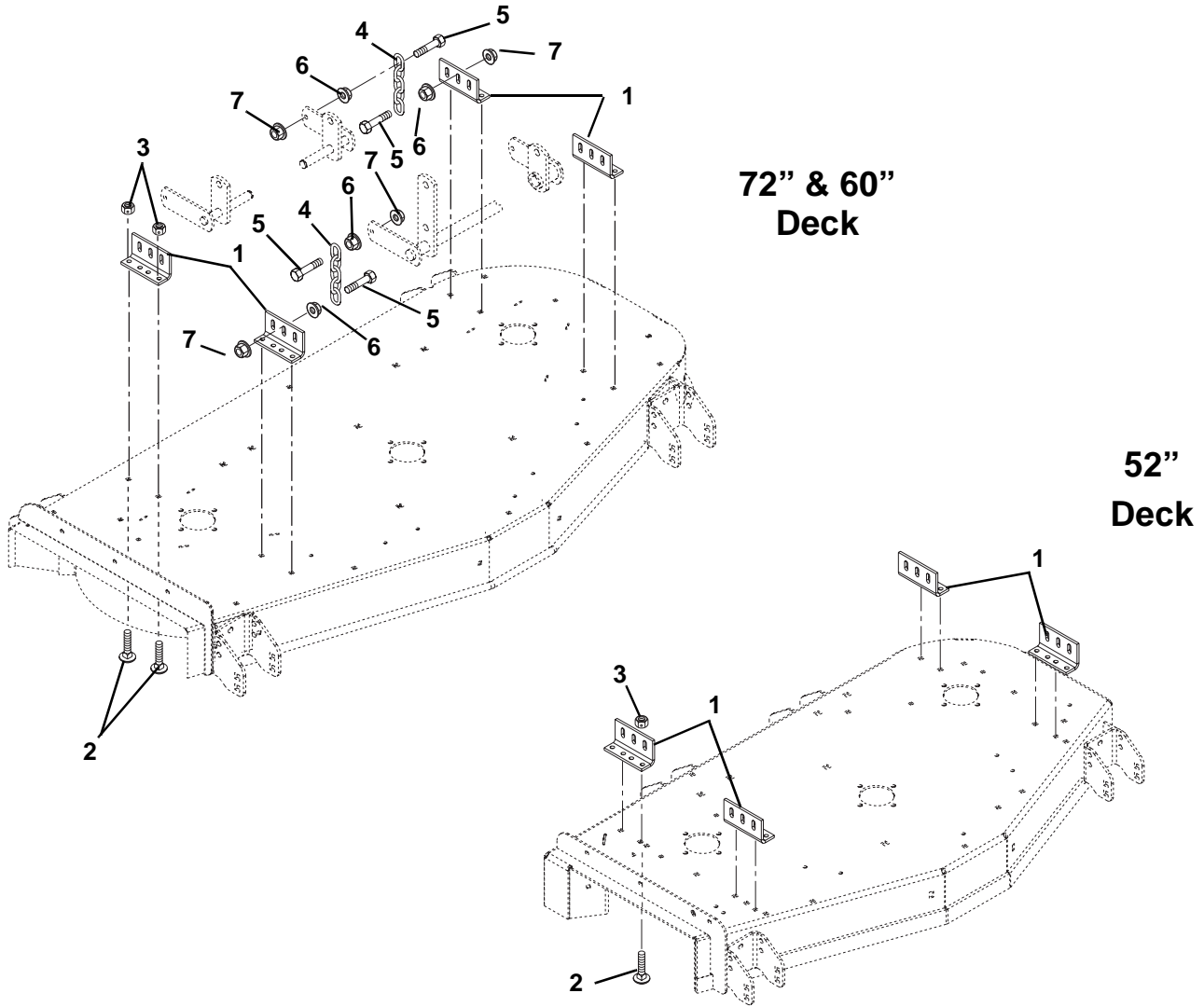
*78803900 - 52" Bahia/Tall Grass Baffle Kit (Not Shown)

*79201600 - 60" Bahia/Tall Grass Baffle Kit (Not Shown)

*79202000 - 72" Bahia/Tall Grass Baffle Kit (Not Shown)

MOUNTING BRACKETS

Model 992045, 046, 047, 052, 066, 067, 068, 071, 084, 085, 086, 087, 088, 089, 091, 102, 103, 104, 105, 106, 107, 108



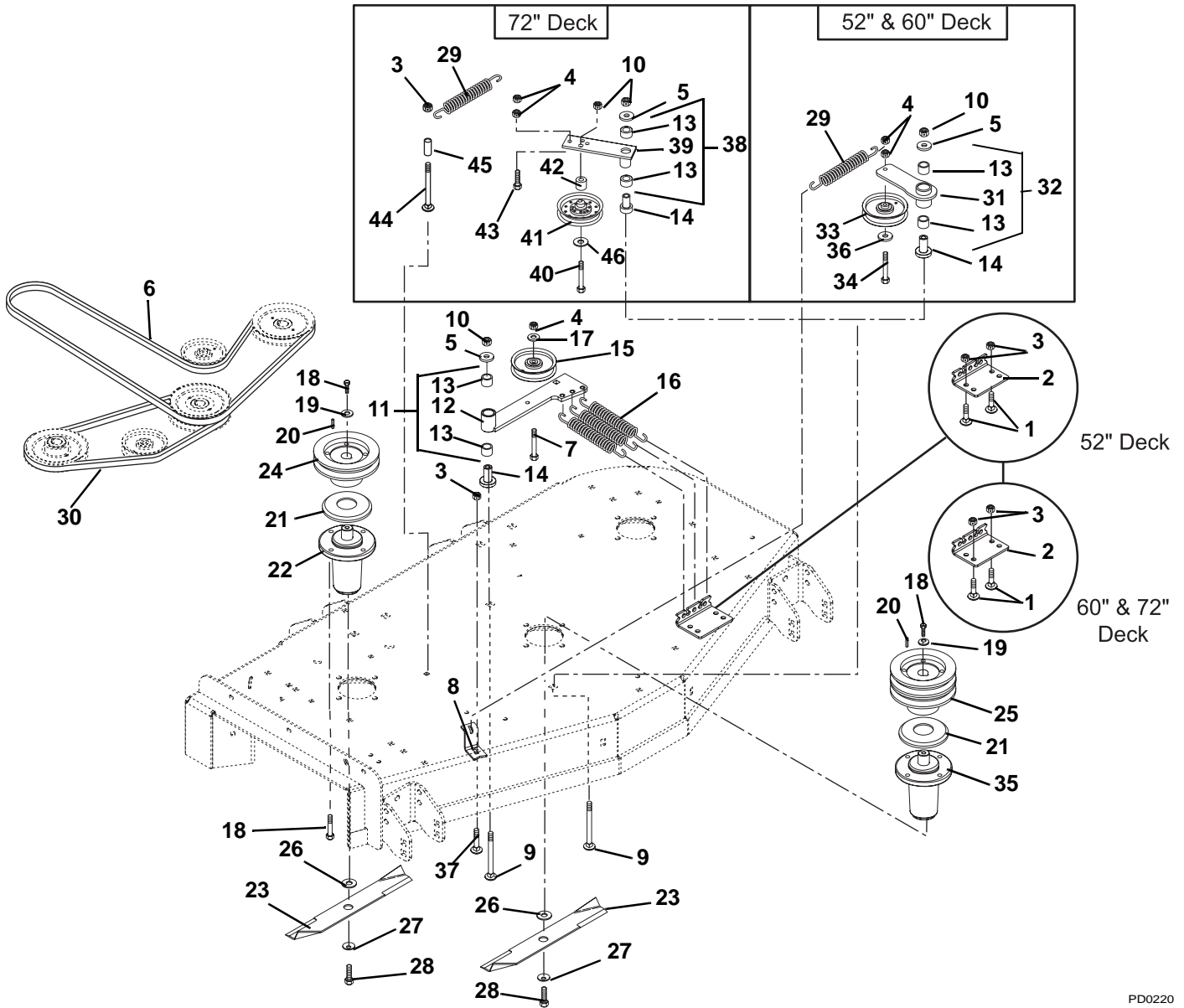
PD0200

Item	Part No.	Qty.	Description
1	09290153	4	Bracket, Mower Mounting
2	06223600	8	Bolt-Round Head Square Neck .38-16 x 1.00 Grade 2
3	06542000	8	Nut-Locking-Top-Flange .38-16
4	09284700	4	Chain, Link
5	05900006	8	Bolt-Hex M12-1.75 x 55 Grade 5
6	06500003	8	Nut, Spin Lock Flange M12-1.75
7	00650004	8	Nut-Locking-Top-Flange M12-1.75

NOTES

BELTS, SPINDLES, IDLERS AND BLADES

Model 992045, 046, 047, 052, 066, 067, 068, 071, 084, 085, 086, 087, 088, 089, 091, 102, 103, 104, 105, 106, 107, 108



Item	Part No.	Qty.	Description
1	06223900	2	Bolt, Round Head Square Neck .38-16 x .75 Grade 5
2	00259700	1	Bracket, Short Spring
3	06542000	3	Nut, Locking Top Flange .38-16 (045, 046, 047, 052, 066, 067, 068, 071, 084, 085, 087, 088, 089, 102, 103, 104, 105, 106, 108)
	06542000	4	Nut, Locking Top Flange .38-16 (086, 091, 107)
4	06529600	3	Nut, Locking Center .38-16
5	415543	3	Washer, Flat Steel .531 x 1.25 x .10 (045, 046, 047, 052, 066, 067, 068, 071, 084, 085, 087, 088, 089, 102, 103, 104, 105, 106, 108)
	415543	2	Washer, Flat Steel .531 x 1.25 x .10 (086, 091, 107)
6	07240700	1	V-Belt, B-Section 54.06 x .625 (045, 052, 066, 071, 084, 087, 102, 103, 104)
	07241300	1	V-Belt, B-Section 58.25 x .625 (046, 047, 067, 068, 085, 088, 089, 105, 106)
	07242300	1	V-Belt, 72 in. Deck Drive (086, 091, 107)
7	06225400	1	Bolt-Round Head Square Neck .38-16 x 2.75 Grade 5
8	09245353	1	Anchor, Spring
9	06200003	2	Bolt, Round Head Square Neck .50-13 x 3.50 Grade 5
10	06543600	2	Nut, Locking Top Flange .50-13 (045, 046, 047, 052, 066, 067, 068, 071, 084, 085, 087, 088, 089, 102, 103, 104, 105, 106, 108)
	06543600	3	Nut, Locking Top Flange .50-13 (086, 091, 107)

BELTS, SPINDLES, IDLERS AND BLADES

Model 992045, 046, 047, 052, 066, 067, 068, 071, 084, 085, 086, 087, 088, 089, 091, 102, 103, 104, 105, 106, 107, 108

Item	Part No.	Qty.	Description
11	00199000	1	Assembly, Deck Idler Pivot Arm (Contains Items 12 & 13)
12	00198451	AR	Weldment, Deck Idler Pivot Arm
13	05435800	AR	Bearing, 1.00 x 1.12 x .75
14	07053100	2	Bearing, Pedestal Powdered Metal
15	07328300	1	Idler, Flat 4.00 x .38 (2.32 W)
16	08300011	3	Spring, Extension
17	446470	1	Washer, Flat Steel .375 x 1.125 x .065
18	05974500	15	Bolt, Hex .38-16 x 1.00 Grade 8
19	06400006	3	Washer, Flat Steel .406 x 1.50 x .245
20	06611200	3	Key, Square .25 x .25 x 1.00
21	09238200	AR	Slinger, Dust
22	59201000	2	Assembly, Maintenance Free Spindle
23	09290500	3	Blade, Mower 72 in. (24.50) Standard (086, 091, 107)
	04916400	3	Blade, Mower 52 in. (18.00) Standard (045, 052, 066, 071, 084, 087, 102, 103, 104)
	09081200	3	Blade, Mower 60 in. (20.50) Standard (046, 047, 067, 068, 085, 088, 089, 105, 106)
	09290600	3	Blade, Mulching 72 in. (24.50) Optional (086, 091, 107)
	04917900	AR	Blade, Mulching 52 in. (18.00) Optional (045, 052, 066, 071, 084, 087, 102, 103, 104)
	08866900	AR	Blade, Mulching 60 in. (20.50) Optional (046, 047, 067, 068, 085, 088, 089, 105, 106)
24	09242500	2	Weldment, Spindle Sheave 5.00 (045, 052, 066, 071, 084, 087, 102, 103, 104)
	09238500	2	Weldment, Spindle Sheave 6.00 (046, 047, 067, 068, 085, 088, 089, 105, 106)
	09253400	2	Weldment, Spindle Sheave (086, 091, 107)
25	09253200	1	Sheave, Double (5.25) (045, 052, 066, 071, 084, 087, 102, 103, 104)
	09253100	1	Sheave, Double (6.25) (046, 047, 067, 068, 085, 088, 089, 105, 106)
	09253300	1	Sheave, Double (7.25) (086, 091, 107)
26	06435200	3	Washer, Flat .64 x 1.81 x .25
27	06445700	3	Washer, Bellville .63 x 1.625 x .14
28	05978900	3	Bolt, Hex .62-18 x 1.75 Grade 8
29	08336100	1	Spring, Extension
30	07237700	1	V-Belt 5L-Section 49.97 x .672 (086, 091, 107)
	049028	1	V-Belt B-Section 19.10 x .672 (045, 052, 066, 071, 084, 087, 102, 103, 104)
	07235000	1	V-Belt B-Section 23.94 x .625 (046, 047, 067, 068, 085, 088, 089, 105, 106)
31	00345600	AR	Arm, Idler Pivot
32	00349100	1	Asm, Idler Pivot Arm (Contains Items 13 and 31)
33	07327600	1	V-Idler, 4.00 x .38
34	05962900	1	Bolt, Hex .38-16 x 2.25 Grade 5
35	59202600	1	Spindle Assembly (Center)
36	06436200	1	Washer, Flat Steel .406 x .812 x .065
37	06223600	1	Bolt, Round Head Square Neck .38-16 x 1.00 Grade 5
38	09219000	1	Assembly, Idler Arm Guard Drive (Includes Items 13 and 39) (086, 091, 107)
39	09217000	AR	Weldment, Idler Arm Ground Drive (086, 091, 107)
40	05961000	1	Bolt, Hex .50-13 x 2.25 Grade 5 (086, 091, 107)
41	07316700	1	Idler, Flat Pulley 6.75 x .51 (086, 091, 107)
42	03233100	1	Spacer .513 x .748 x .62 (086, 091, 107)
43	05958000	1	Bolt, Hex .38-16 x 1.25 Grade 5 (086, 091, 107)
44	06225400	1	Bolt, Round Head Square Neck .38-16 x 2.75 Grade 5 (086, 091, 107)
45	09054100	1	Spacer .38 x .625 x 1.50 (086, 091, 107)
46	06441000	1	Washer, Flat Steel .50 x 1.25 x .083

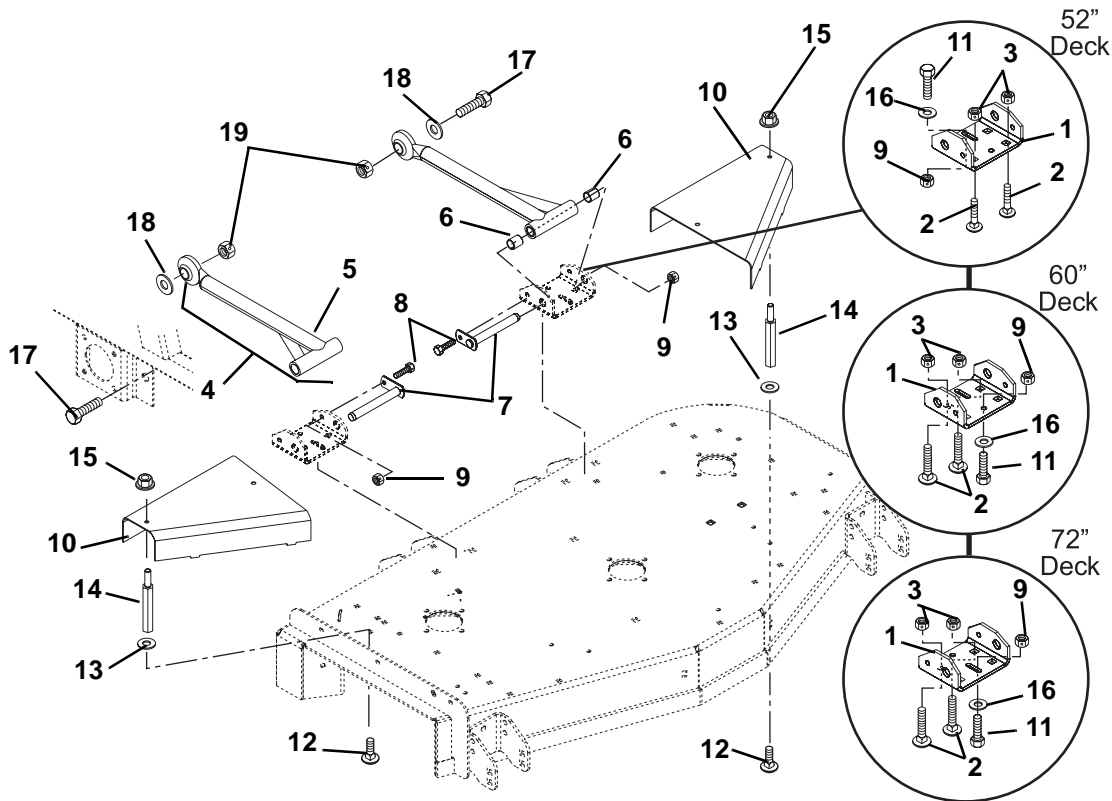
*78803500 - 52" Mulching Kit (Not Shown)

*79200300 - 60" Mulching Kit (Not Shown)

*79200900 - 72" Mulching Kit (Not Shown)

MOUNTING ARMS AND BELT GUARDS

Model 992045, 046, 047, 052, 066, 067, 068, 071, 084, 085, 086, 087, 088, 089, 091, 102, 103, 104, 105, 106, 107, 108

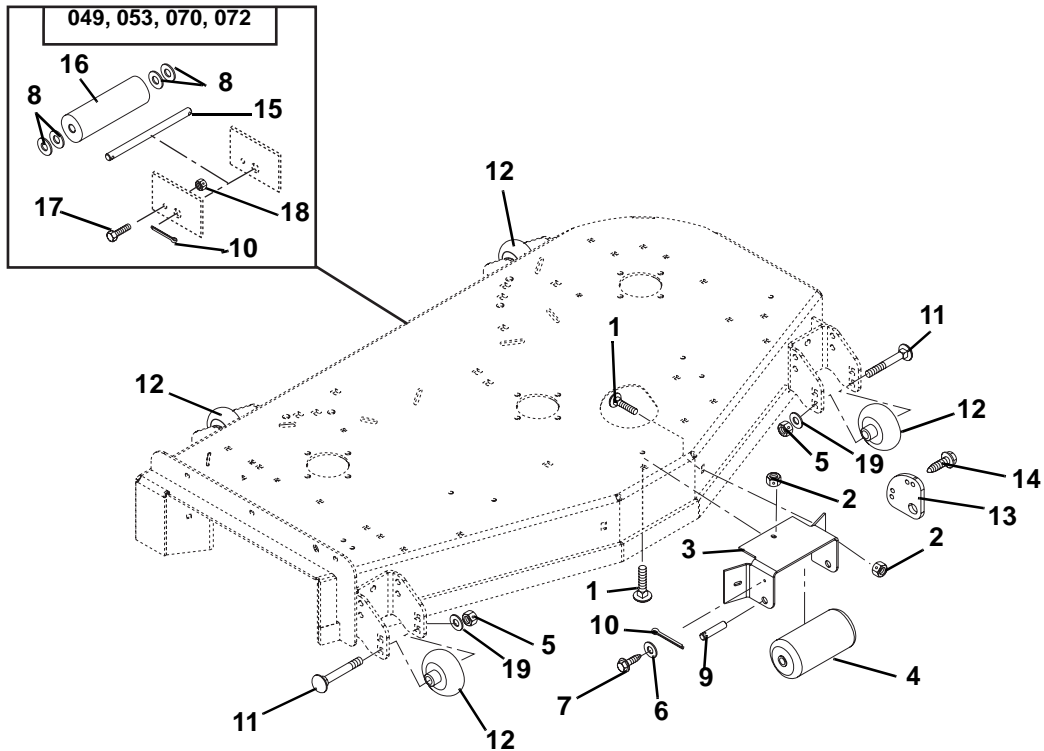


PD0231

Item	Part No.	Qty.	Description
1	09240453	2	Bracket, Mower Mounting (Rear)
2	06224600	4	Bolt, Round Head Square Neck .50-13 x 1.00 Grade 5
3	06519700	4	Nut, Locking Center Jam .50-13
4	09247800	2	Assembly, Mower Mounting Arm (Includes Items 5 and 6)
5	09247951	AR	Weldment, Mower Mounting Arm
6	05435900	AR	Bearing .75 x .875 x 1.00
7	09238900	2	Weldment, Mower Mounting Pin
8	05932600	2	Bolt, Hex .38-16 x .88 Grade 5
9	06542000	4	Nut, Locking Top Flange .38-16
10	09246353	1	Guard, Pulley Right Hand (045, 052, 066, 071, 084, 087, 102, 103, 104)
	09246253	1	Guard, Pulley Left Hand (045, 052, 066, 071, 084, 087, 102, 103, 104)
	09240853	1	Guard, Pulley Left Hand (046, 047, 067, 068, 085, 088, 089, 105, 106)
	09240753	1	Guard, Pulley Right Hand (046, 047, 067, 068, 085, 088, 089, 105, 106)
	09252553	1	Guard, Right Hand Pulley (086, 091, 107)
	09252453	1	Guard, Left Hand Pulley (086, 091, 107)
11	05948700	2	Bolt, Hex .38-16 x 1.00 Grade 5
12	06200002	4	Bolt, Round Head Square Neck .31-18 x .75 Grade 5
13	06439100	4	Washer, Flat Steel .38 x .87 x .179 (086, 091, 107, 108)
14	00271200	4	Standoff, 2.75 x .312-18
15	06543100	4	Nut, Locking Top Flange .31-18
16	06436200	2	Washer, Flat Steel .406 x .812 x .065
17	05969500	2	Bolt, Hex .875-9 x 2.75 Grade 5
18	06444700	2	Washer, Flat Steel .875 x 1.50 x .120
19	06539700	2	Nut, Locking Center .875-9

ROLLERS

Model 992045, 046, 047, 052, 066, 067, 068, 071, 084, 085, 086, 087, 088, 089, 091, 102, 103, 104, 105, 106, 107, 108



PD3780

Item	Part No.	Qty.	Description
1	06223600	3	Bolt-Round Head Square Neck .38-16 x 1.00 Grade 5
2	06542000	3	Nut-Locking-Top-Flange .38-16
3	04920853	1	Bracket- Anti-Scalp Roller
4	09078100	1	Roller
5	06540600	4	Nut-Locking-Nylon .50-13
6	06437300	1	Washer-Flat-Steel .281 x .62 x .065
7	07414200	1	Screw-Tapping .25-20 x .75 Hex Washer Head
8	06442800	6	Washer-Flat-Steel .656 x 1.31 x .095 (086, 091, 107)
9	09288400	1	Pin
10	06713100	1	Pin-Cotter .25 x 2.00 (045, 046, 047, 052, 066, 067, 068, 071, 084, 085, 087, 088, 089, 102, 103, 104, 105, 106, 108)
	06713100	2	Pin-Cotter .25 x 2.00 (086, 091, 107)
11	06225900	4	Bolt-Round Head Square Neck .50-13 x 5.00 Grade 2
12	09253700	4	Wheel, 3 x 5
13	09290353	2	Anti-Scalp Washer
14	07401900	3	Screw-Tapping .25-20 x .62 Hex Washer Head
15	024795	1	Shift, Center Roller (086, 091, 107)
16	031390	1	Roller, Gage (086, 091, 107)
17	05946800	1	Bolt-Hex .25-20 x .75 Grade 5 (086, 091, 107)
18	06529700	1	Nut-Locking-Center .25-20 (086, 091, 107)
19	06441900	4	Washer-Flat-Steel .531 x 1.06 x .095



GRAVELY
A Division of Ariens Company
655 West Ryan Street
P.O. Box 157
Brillion, WI 54110-0157
920-756-2141
Fax 920-756-2407
www.gravelly.com