

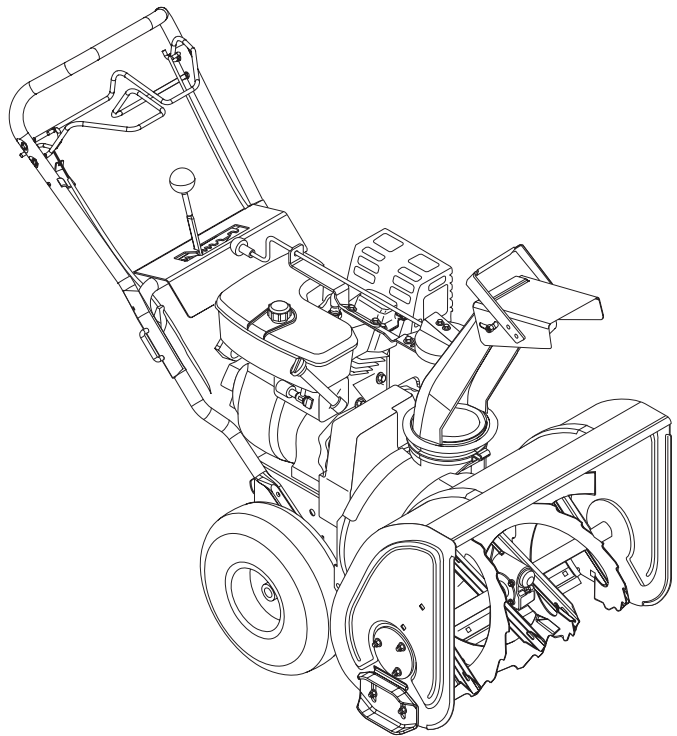


# Sno-Thro<sup>®</sup>

## Parts Manual

### Models

932037 - ST724E  
932038 - ST5520E  
932039 - ST624E  
932505 - ST724  
932507 - ST520  
932508 - ST624



## THE MANUAL

---

Before you operate your unit, carefully and completely read manuals supplied with the unit. The contents will provide you with an understanding of safety instructions and controls during normal operation and maintenance.

For your safety and the safety of others always read, understand, and follow all DANGER, WARNING, and CAUTION messages found in manuals and on safety decals.

Hardware descriptions are given in decimals.

Decimals to Fractions			
.063	1/16	.563	9/16
.125	1/8	.625	5/8
.188	3/16	.688	11/16
.250	1/4	.750	3/4
.313	5/16	.813	13/16
.375	3/8	.875	7/8
.438	7/16	.938	15/16
.500	1/2	1.00	1

## SERVICE AND REPLACEMENT PARTS

---

When ordering replacement parts or making service inquiries, know the Model and Serial numbers of your unit and engine.

Numbers are located on the product registration card in the unit literature package. They are printed on a serial number label, located on the frame of your unit.

- Record Unit Model and Serial numbers here:

- Record Engine Model and Serial numbers here:

## UNAUTHORIZED REPLACEMENT PARTS

Use only Ariens replacement parts. The replacement of any part on this vehicle with anything other than an Ariens authorized replacement part may adversely affect the performance, durability, or safety of this unit and may void the warranty. Ariens disclaims liability for any claims or damages, whether warranty, property damage, personal injury or death arising out of the use of unauthorized replacement parts.

## PRODUCT REGISTRATION

---

The Ariens dealer must register the product at the time of purchase. Registering the product will help the company process warranty claims or contact you with the latest service information. All claims meeting requirements during the limited warranty period will be honored, whether or not the product registration card is returned. Keep a proof of purchase if you do not register your unit.

**Customer Note:** If Dealer does not register your product, please fill out, sign and return the product registration card to Ariens or go to [www.ariens.com](http://www.ariens.com).

## YOUR SATISFACTION IS IMPORTANT

---

**Questions? Please follow these helpful steps:**

1. Refer to the manuals supplied with your unit.  
They will guide you through safe and proper operation and maintenance.  
They contain specifications on your unit.  
If your questions are not answered in these manuals, go to step number two.
2. Contact Your Dealer.  
Our dealers will be happy to supply any service or advice required to keep your unit operating at peak efficiency.  
A factory trained staff is available to support your equipment needs. They stock genuine Ariens parts and lubricants manufactured with the same precision and skill as the original.  
If your questions are not resolved by the support staff, ask for the manager or owner.  
When contacting your Dealer supply your model and serial numbers.

## TO SPEED PARTS ORDERING:

1. Know the model and serial numbers of your unit.
2. Know the part number required.
3. Know the quantity required.
4. Know the part description.

## MODELS

---

### Domestic

**Model 932037 (724)**

7H.P. 24" Sno-Thro  
Serial No. 004501 and up

**Model 932038 (5520)**

5.5H.P. 20" Sno-Thro  
Serial No. 000101 and up

**Model 932039 (624)**

6H.P. 24" Sno-Thro  
Serial No. 000101 and up

### Global

**Model 932505 (724)**

7H.P. 24" Sno-Thro  
Serial No. 001501 and up

**Model 932507 (520)**

5H.P. 20" Sno-Thro  
Serial No. 000101 and up

**Model 932508 (624)**

6H.P. 24" Sno-Thro  
Serial No. 000101 and up

## TABLE OF CONTENTS

---

### DECALS

---

Decals . . . . . 4

### ENGINE AND DRIVE

---

Engine and Belt Drive . . . . . 6

Friction Drive . . . . . 12

### FRAME AND HOUSING

---

Handlebars and Controls . . . . . 14

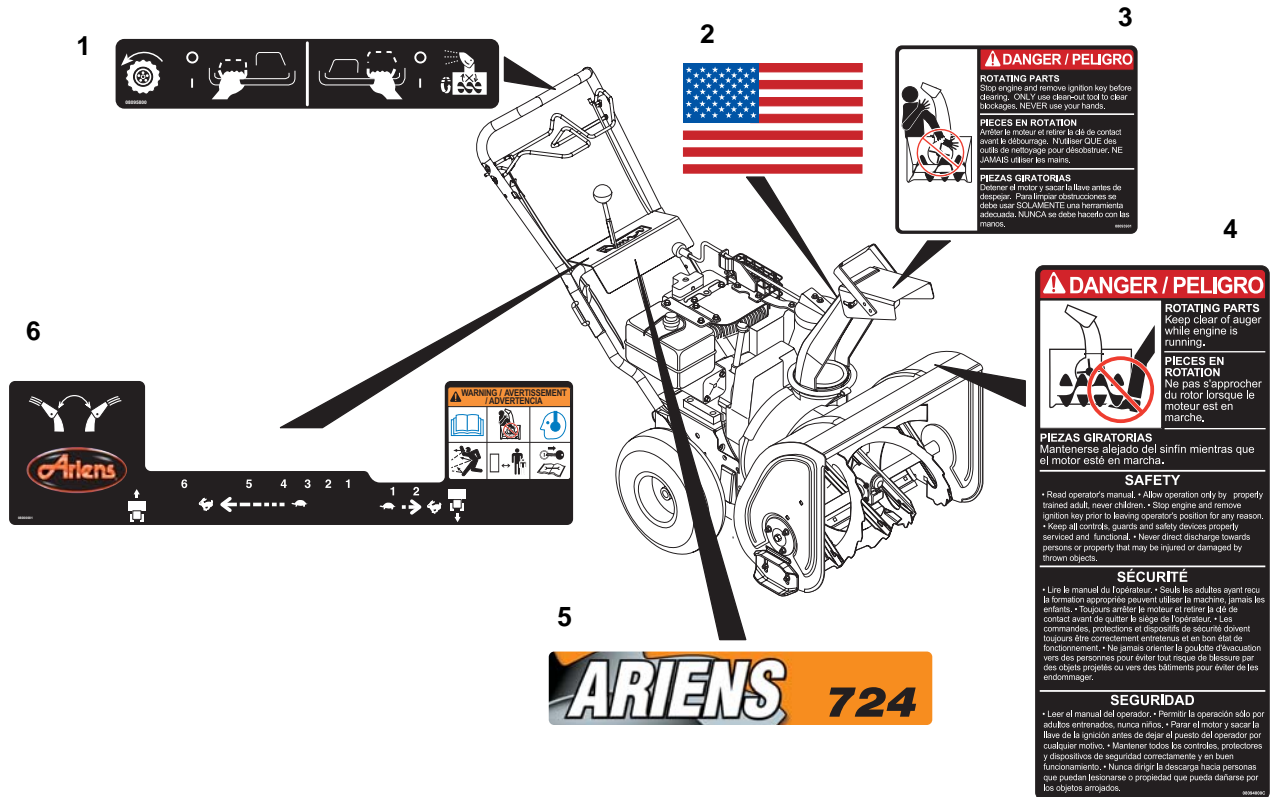
Auger and Chute . . . . . 16

Discharge Chute Crank . . . . . 20

Gearcase and Impeller. . . . . 22

# DECALS - 520 / 5520 / 624 / 724

Model 932037, 038, 039, 505, 507, 508



Item	Part No.	Qty.	Description
1	08095800	1	Decal, Bail
2	05305100	1	Decal, American Flag
3	08093901	1	Decal, Danger- Rotating Parts
4	08094000	1	Decal, Danger
5	08000002	1	Decal, Front Panel, ST520 (932507)
	08000003	1	Decal, Front Panel, ST724 (932037, 505)
	08000004	1	Decal, Front Panel, ST624 (932039, 508)
	08000009	1	Decal, Front Panel, ST5520 (932038)
6	08000001	1	Decal, Control Panel

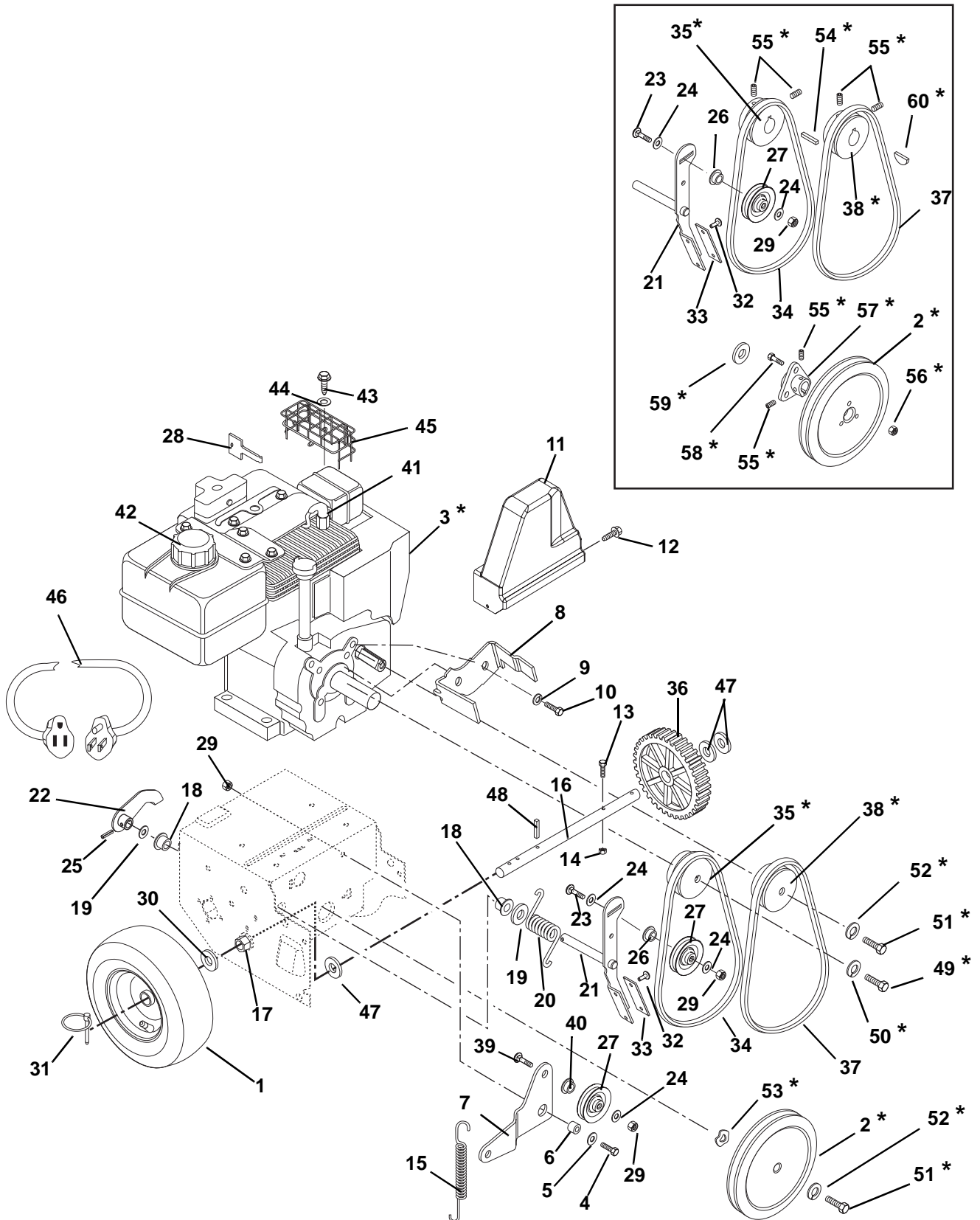
PS0321

# NOTES

---

# ENGINE AND BELT DRIVE

Model 932037, 038, 039, 505, 507, 508 (\* see serial number table on page 9 for serial number range)



PS0331

# ENGINE AND BELT DRIVE

**Model 932037, 038, 039, 505, 507, 508 (\* see serial number table on page 9 for serial number range)**

Item	Part No.	Qty.	Description
1	07100012	2	Wheel 4.10-6
	07105000	2	Tube 4.10 x 3.50-6
	07121300	2	Tire 4.10/3.50 x 6
	07100011	2	Tire/Wheel Assembly 4.10-6 x 12.8
2	00272400	1	Pulley-3L with Hub .625 x 8.00 *
	07307400	1	Pulley-3L without Hub 1.25 x 8.0 *
3	08200014	1	Engine, 5HP Tecumseh LH195SA Recoil (507) *
	08267900	1	Engine, 5HP Tecumseh LH195SA Recoil (507) *
	08200015	1	Engine, 5.5HP Tecumseh LH195SP 120V (038)
	08200016	1	Engine, 6HP Tecumseh OH195SA Recoil (508) *
	08200025	1	Engine, 6HP Tecumseh OH195SA Recoil (508) *
	08200017	1	Engine, 6HP Tecumseh OH195SA 120V (039) *
	08200024	1	Engine, 6HP Tecumseh OH195SA 120V (039) *
	08200018	1	Engine, 7HP Tecumseh OH195SA Recoil (505) *
	08200019	1	Engine, 7HP Tecumseh OH195SA 120V (037) *
	08261400	1	Engine, 7HP Tecumseh OH195SA Recoil (505) *
	08264800	1	Engine, 7HP Tecumseh OH195SA 120V (037) *
4	05947000	1	Bolt, Hex .31-18 x .75 Grade 5
5	06435700	1	Washer, Flat Steel .38 x .88 x .083
6	01035800	1	Spacer Bushing
7	03206900	1	Idler Arm
8	03229051	1	Belt Finger (038, 507)
	03238151	1	Belt Finger (037, 039, 505, 508)
9	06307400	1	Washer, Locking .312 x .097
10	05947300	1	Bolt, Hex .31-24 x .75 Grade 5
11	03238000	1	Belt Cover
12	07411600	2	Screw, Tapping Hex Washer Head .25-20 x .37
13	05953000	1	Bolt, Hex .25-20 x 1.75 Grade 8
14	06529700	1	Nut, Locking Center .25-20
15	08317200	1	Spring, Tension .05 x .44 x 3.37
16	00289300	1	Shaft, Axle with Pin-Lock
17	05521600	2	Bushing, Flange Hex .75 x .87 x .53 x 1.18
18	05502100	2	Bushing, Flange .50 x .625 x .50 x .75
19	06439600	2	Washer, Flat Steel .52 x .81 x .033
20	08322000	1	Spring, Torsion .15 x 1.00 x 1.53
21	53205100	1	Clutch Arm with Brake Pad (Includes items 32 & 33)
22	03231951	1	Arm, Clutch
23	06219200	1	Bolt-Round Head Square Neck .31-18 x 1.25 Grade 5
24	06435700	3	Washer, Flat Steel .38 x .88 x .083
25	05802600	1	Pin, Roll .16 x .88
26	01213100	1	Bearing Spacer
27	02457400	2	Idler
28	07532000	AR	Key, Push/Pull Tecumseh
29	06529800	3	Nut, Locking Center .31-18
30	06441400	2	Washer, Flat Steel .754 x 1.125 x .062
31	07053700	2	Pin-LOK .31 x 1.75
32	06806700	2	Rivet, Tubular .19 x .44 (Included with item 21)
33	03229100	1	Brake Lining (Included with item 21)
34	07219100	1	V Belt 4L-Section 37.88 x .56 (038, 507)
	07232500	1	V-Belt 4L-Section 38.76 (037, 039, 505, 508)
35	00279100	1	Sheave, Engine (038, 507) *
	00279000	1	Sheave, Engine (037, 039, 505, 508) *
	03225000	1	Sheave, Engine (038, 507) *
	03229200	1	Sheave, Engine (037, 039, 505, 508) *

## ENGINE AND BELT DRIVE

---

**Model 932037, 038, 039, 505, 507, 508 (\* see serial number table on page 9 for serial number range)**

36	03226000	1	Gear
37	07210600	1	V-Belt 3L-Section 37 x .406 (038, 507)
	07210700	1	V-Belt 3L-Section 34.50 x .406 (037, 039, 505, 508)
38	00279200	1	Pulley, Camshaft *
	03228400	1	Pulley, Camshaft *
39	06221800	1	Bolt, Round Head Square Short Neck .31-18 x 1.00
40	01305900	1	Shoulder Spacer
41	21533400	AR	Plug, Spark (038, 507)
	21533500	AR	Plug, Spark (037, 039, 505, 508)
42	07531800	AR	Cap, Fuel
43	07413600	2	Screw, Tapping 10-16 x .75 (507)
44	06442700	2	Washer, Flat Steel .22 x .50 x .049 (507)
45	03227000	1	Guard, Muffler 5 HP Tecumseh (507)
46	02483100	1	Cord, Extension 120 V (037, 038, 039)
47	06444200	3	Washer, Flat Steel .755 x 1.25 x .125
48	05800300	1	Pin-Roll .188 x 1.25
49	05900009	1	Bolt, Hex .38-24 x 1.00 Grade 5 with Precote 80 *
50	06308800	1	Washer, Locking .38 x .094 *
51	05900010	2	Bolt, Hex .25-28 x .75 Grade 5 with Precote 80 *
52	06308000	2	Washer, Locking .25 x .077 *
53	06400007	1	Washer, Wave .69 x .84 x .011 *
54	06601300	1	Key, Square .19 x 1.00 x .19 SAE 8630 or SAE 1035 *
55	06005500	6	Screw, Set .31-18 x .38 *
56	06530400	3	Nut, Locking Flange .31-18 *
57	03205000	1	Hub *
58	07005300	3	Bolt, Serrated Round Head Slotted .31-18 x .75 *
59	06417300	1	Washer, Thrust .625 x 1.125 x .063 *
60	06601500	1	Key, Woodruff .13 x .63 x .250 *



# ENGINE AND BELT DRIVE

**Model 932037, 038, 039, 505, 507, 508 (\* see serial number table on page 9 for serial number range)**

Engine and Belt Drive Serial Number Ranges			
Item	Part Number	Model	Serial Range
<b>2</b>	00272400	932037	5001 & up
		932038	5001 & up
		932039	5001 & up
		932505	1642 & up
		932507	501 & up
		932508	5001 & up
<b>2</b>	07307400	932037	4501-5000
		932038	101-5000
		932039	101-5000
		932505	1501-1641
		932507	101-500
		932508	101-5000
<b>3</b>	08200014	932507	317 & up
<b>3</b>	08267900	932507	101-316
<b>3</b>	08200016	932508	5001 & up
<b>3</b>	08200025	932508	101-5000
<b>3</b>	08200017	932039	2001 & up
<b>3</b>	08200024	932039	101-2000
<b>3</b>	08200018	932505	1642 & up
<b>3</b>	08261400	932505	1501-1641
<b>3</b>	08200019	932037	4556 & up
<b>3</b>	08264800	932037	4501-4555
<b>35</b>	00279100	932038	6001 & up
		932507	501 & up
<b>35</b>	00279000	932037	5123 & up
		932039	6674 & up
		932505	2240 & up
		932508	5201 & up
<b>35</b>	03225000	932038	101-6000
		932507	101-500
<b>35</b>	03229200	932037	4501-5122
		932039	101-6673
		932505	1501-2239
		932508	101-5200
<b>38</b>	00279200	932037	4556 & up
		932038	101 & up
		932039	2001 & up
		932505	1642 & up
		932507	501 & up
		932508	5001 & up

Engine and Belt Drive Serial Number Ranges			
Item	Part Number	Model	Serial Range
<b>38</b>	03228400	932037	4501-4555
		932039	101-2000
		932505	1501-1641
		932507	101-500
		932508	101-5000
<b>49</b>	05900009	932037	5123 & up
		932038	6001 & up
		932039	6674 & up
		932505	2240 & up
		932507	501 & up
<b>50</b>	06308800	932037	5123 & up
		932038	6001 & up
		932039	6674 & up
		932505	2240 & up
		932507	501 & up
<b>51</b>	05900010 (used with item <b>2</b> )	932037	5001 & up
		932038	5001 & up
		932039	5001 & up
		932505	1642 & up
		932507	501 & up
<b>51</b>	05900010 (used with item <b>38</b> )	932037	5001 & up
		932038	5001 & up
		932039	5001 & up
		932505	1642 & up
		932507	501 & up
<b>51</b>	05900010 (used with item <b>38</b> )	932037	4556 & up
		932038	101 & up
		932039	2001 & up
		932505	1642 & up
		932507	501 & up
<b>52</b>	05900010 (used with item <b>2</b> )	932037	5001 & up
		932038	5001 & up
		932039	5001 & up
		932505	1642 & up
		932507	501 & up
<b>52</b>	05900010 (used with item <b>38</b> )	932037	5001 & up
		932038	5001 & up
		932039	5001 & up
		932505	1642 & up
		932507	501 & up
<b>52</b>	05900010 (used with item <b>38</b> )	932037	4556 & up
		932038	101 & up
		932039	2001 & up
		932505	1642 & up
		932507	501 & up
<b>53</b>	06400007	932037	5001 & up
		932038	5001 & up
		932039	5001 & up
		932505	1642 & up
		932507	501 & up
<b>53</b>	06400007	932037	5001 & up
		932038	5001 & up
		932039	5001 & up
		932505	1642 & up
		932507	501 & up
<b>53</b>	06400007	932037	5001 & up
		932038	5001 & up
		932039	5001 & up
		932505	1642 & up
		932508	5001 & up

# ENGINE AND BELT DRIVE

Model 932037, 038, 039, 505, 507, 508 (\* see serial number table on page 9 for serial number range)

Engine and Belt Drive Serial Number Ranges			
Item	Part Number	Model	Serial Range
<b>54</b>	06601300	932037	4501-5122
		932038	101-6000
		932039	101-6673
		932505	1501-2239
		932507	101-500
		932508	101-5200
<b>55</b>	06005500 (used with item <b>35</b> )	932037	4501-5122
		932038	101-6000
		932039	101-6673
		932505	1501-2239
		932507	101-500
		932508	101-5200
<b>55</b>	06005500 (used with item <b>38</b> )	932037	4501-4555
		932039	101-2000
		932505	1501-1641
		932507	101-500
		932508	101-5000
<b>55</b>	06005500 (used with item <b>57</b> )	932037	4501-5000
		932038	101-5000
		932039	101-5000
		932505	1501-1641
		932507	101-500
		932508	101-5000
<b>56</b>	06530400	932037	4501-5000
		932038	101-5000
		932039	101-5000
		932505	1501-1641
		932507	101-500
		932508	101-5000

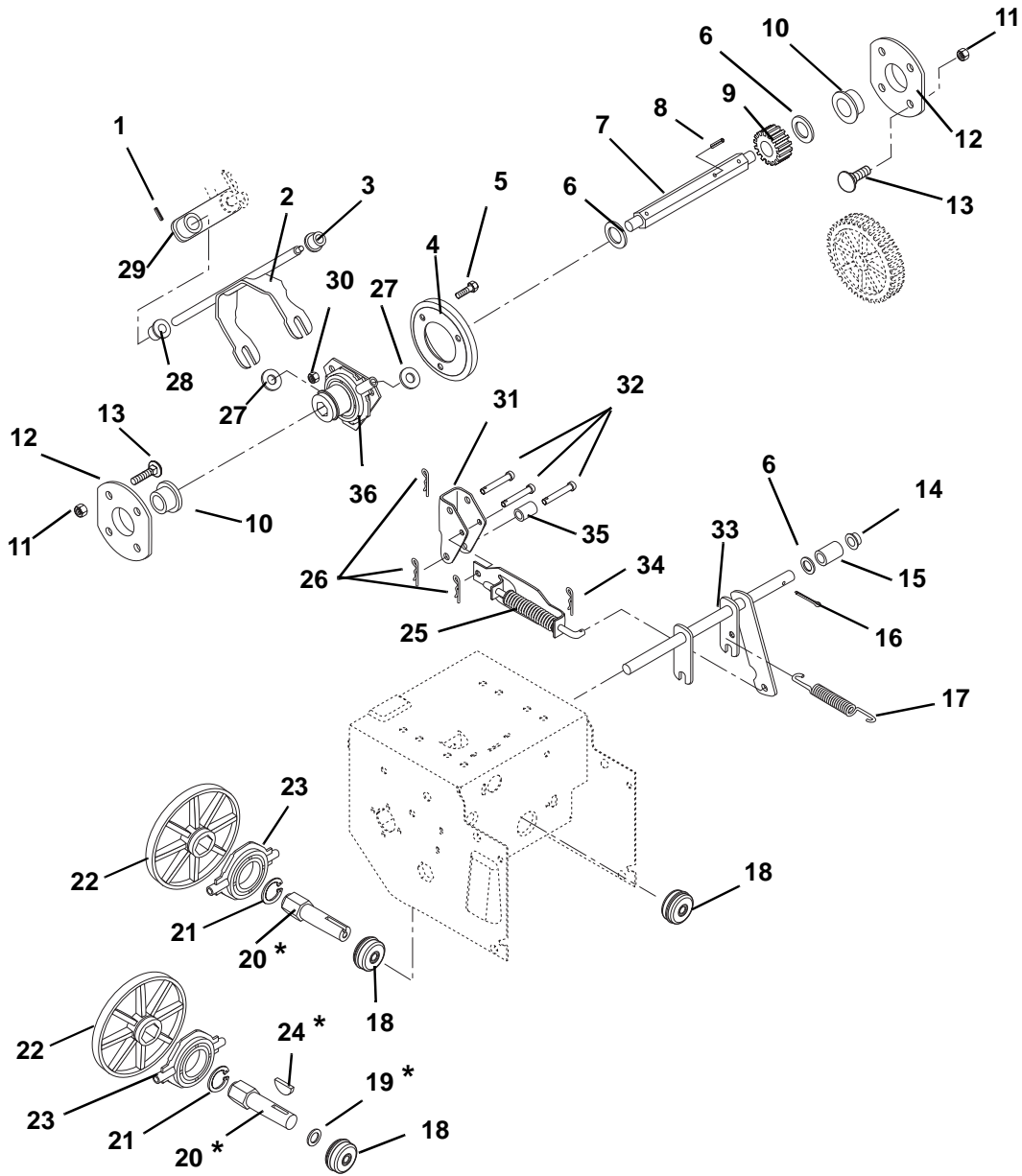
Engine and Belt Drive Serial Number Ranges			
Item	Part Number	Model	Serial Range
<b>57</b>	03205000	932037	4501-5000
		932038	101-5000
		932039	101-5000
		932505	1501-1641
		932507	101-500
		932508	101-5000
<b>58</b>	07005300	932037	4501-5000
		932038	101-5000
		932039	101-5000
		932505	1501-1641
		932507	101-500
		932508	101-5000
<b>59</b>	06417300	932037	4501-5000
		932038	101-5000
		932039	101-5000
		932505	1501-1641
		932507	101-500
		932508	101-5000
<b>60</b>	06601500	932037	4501-4555
		932039	101-2000
		932505	1501-1641
		932507	101-500
		932508	101-5000

# NOTES

---

# FRICTION DRIVE

Model 932037, 038, 039, 505, 507, 508 (\* see serial number table on page 13 for serial number range)



PS0341

Item	Part No.	Qty.	Description
1	05802600	1	Pin, Roll .16 x .88
2	03231700	1	Fork, Speed
3	05514500	1	Bushing, Flange .33 x .44 x .44 x .56
4	03248300	1	Friction Disc
5	05947900	3	Bolt, Hex .25-20 x .50 Grade 5
6	06441900	3	Washer, Flat Steel .53 x 1.06 x .095
7	03207300	1	Hex Shaft
8	05804700	3	Pin, Roll .125 x .88
9	02201100	1	Pinion
10	05511000	2	Bushing, Flange .50 x .75 x .63 x .94
11	06530600	8	Nut, Locking Dual Face 10-24
12	53211500	2	Flange and Bushing (Includes Item 10)

# FRICTION DRIVE

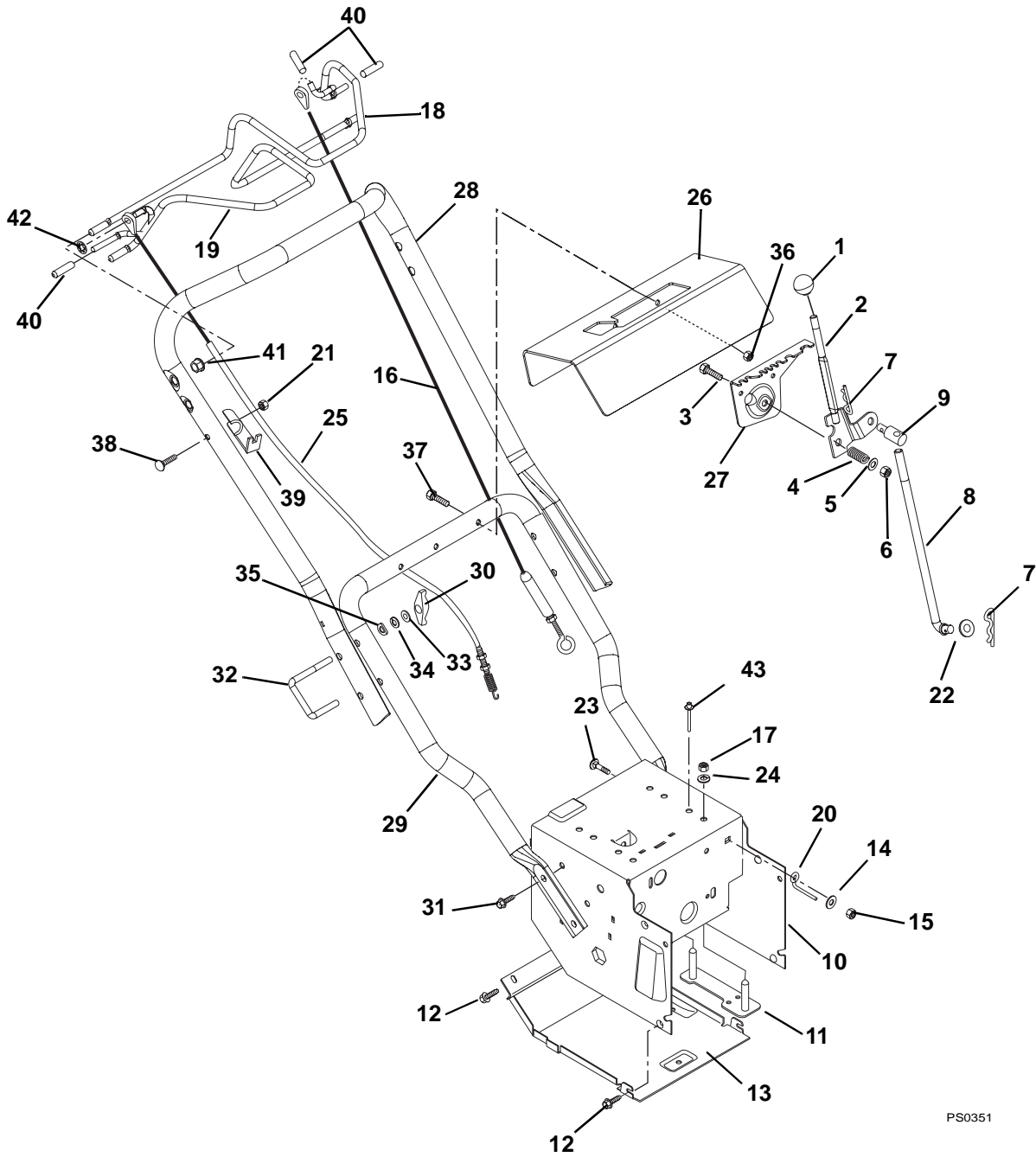
**Model 932037, 038, 039, 505, 507, 508 (\* see serial number table on page 13 for serial number range)**

Item	Part No.	Qty.	Description
13	06214200	8	Bolt, Round Head Square Neck 10-24 x .38 Grade 5
14	01208600	1	Cap .50 Rod
15	03231500	1	Spacer .50 x .75 x .32
16	06707100	1	Pin, Cotter .12 x 1.0
17	08314100	1	Spring, Tension .06 x .44 x 1.56
18	05400004	2	Bearing, Ball Snap Ring .624 x 1.38 x .43
19	06417300	1	Washer, Thrust .625 x 1.125 x .063 *
20	00291600	1	Spindle Shaft, 932 Drive Plate *
	03200700	1	Shaft, Hex *
21	05704300	1	Ring, Retaining External 1.25 x .05
22	03201100	1	Friction Plate
23	03225900	1	Bearing Assembly
24	06600300	1	Key, Woodruff .19 x .75 *
25	53205500	1	Assembly, Traction Clutch
26	06701900	3	Pin, Hair Internal .06 x .18 x .77
27	06439200	2	Washer, Flat Steel .51 x 1.00 x .062
28	05502100	1	Bushing, Flange .50 x .625 x .50 x .75
29	03240151	1	Arm, Speed Control
30	06529700	3	Nut, Locking Center .25-20
31	03248000	1	Bracket, Traction Arm
32	06714700	3	Pin, Clevis .243/.248 x 1.38
33	03221100	1	Clutch Fork
34	06713500	1	Pin, Hair Internal .08 x .18 x 1.18
35	03242100	1	Spacer .325 x .625 x .455
36	03235300	1	Shift Carrier

Friction Drive Serial Number Ranges			
Item	Part Number	Model	Serial Range
<b>19</b>	06417300	932037	4501-4577
		932038	101-5000
		932039	101-5000
		932507	101-500
		932508	101-5000
<b>20</b>	03200700	932037	4501-4577
		932038	101-5000
		932039	101-5000
		932507	101-500
		932508	101-5000
<b>20</b>	00291600	932037	4578 & up
		932038	5001 & up
		932039	5001 & up
		932505	1501 & up
		932507	501 & up
932508	5001 & up		
<b>24</b>	06600300	932037	4501-5000
		932038	101-5000
		932039	101-5000
		932505	1501-1641
		932507	101-500
932508	101-5000		

# HANDLEBARS AND CONTROLS

Model 932037, 038, 039, 505, 507, 508



PS0351

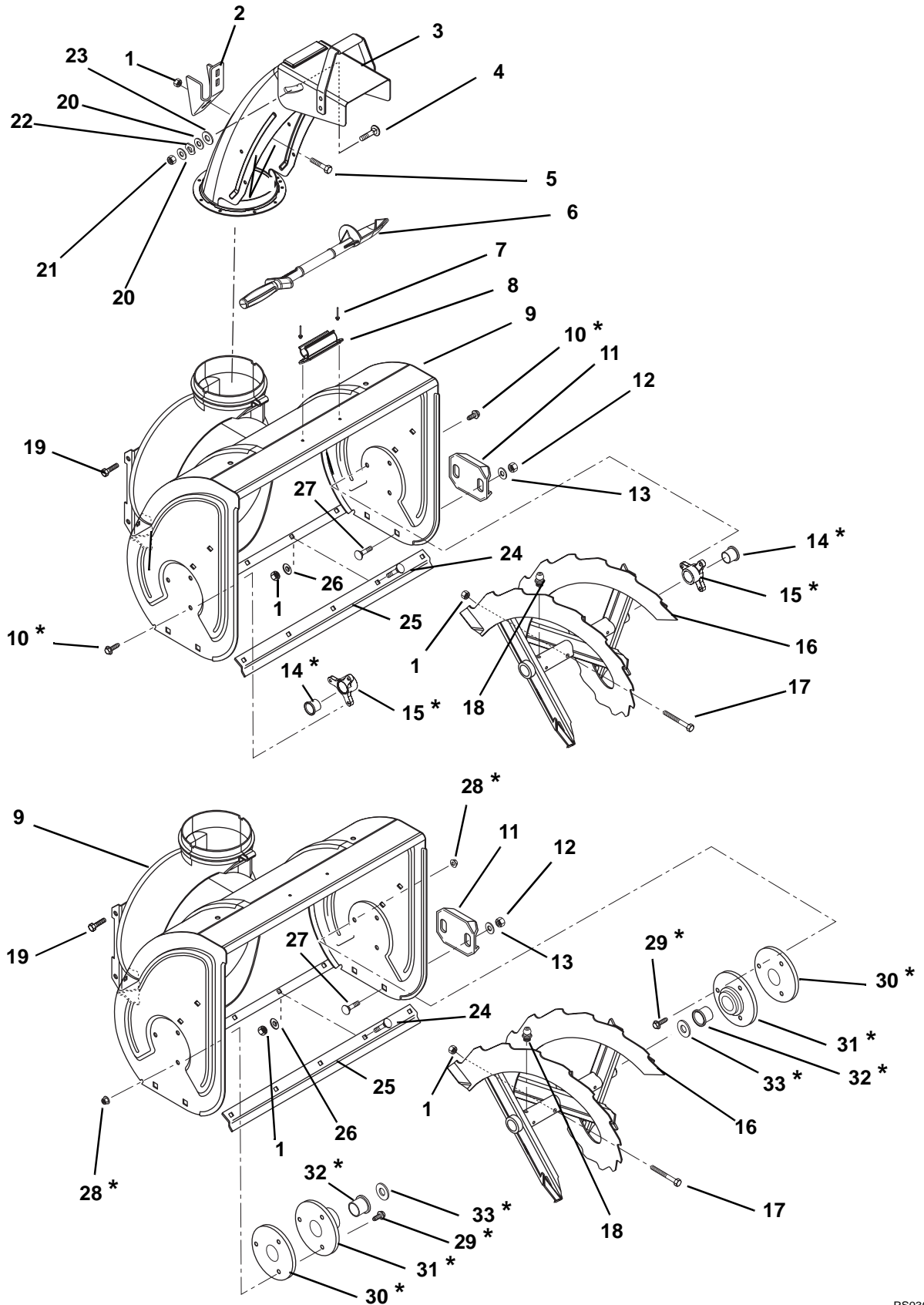
# HANDLEBARS AND CONTROLS

Model 932037, 038, 039, 505, 507, 508

Item	Part No.	Qty.	Description
1	07533500	1	Knob, Ball-Black 1.47, .375-16
2	03247900	1	Weldment, Shift Lever
3	05963300	1	Bolt, Hex .38-16 x 2.00 Grade 5
4	08335700	1	Spring, Compression .13 x .78 x 1.25
5	06435900	1	Washer, Flat Steel .44 x 1.00 x .083
6	06529600	1	Nut, Locking Center .38-16
7	06713500	2	Pin, Hair Internal .08 x .18 x 1.18
8	03247600	1	Rod, Shift
9	02493000	1	Pivot, Rod
10	00297059	1	Frame, Compact Snow
11	00188400	2	Strap, Engine Bolt Weldment
12	07411600	4	Screw, Tapping .25-20 x .37 Hex Washer Head
13	03232459	1	Cover Bottom
14	06435700	1	Washer, Flat Steel .38 x .88 x .08
15	06529800	1	Nut, Locking Center .31-18
16	06948900	1	Cable, Traction
17	06529200	4	Nut, Hex .31-18
18	03247451	1	Bail, Traction
19	03247351	1	Bail, Auger
20	03236300	1	Belt Finger Lower
21	06529700	1	Nut, Locking Center .25-20
22	06441900	1	Washer, Flat Steel .531 x 1.06 x .095
23	06220800	1	Bolt-Round Head Square Short Neck .31-18 x .75 Grade 5
24	06307400	4	Washer, Locking .31 x .10 Heavy
25	06947600	1	Cable, Auger
26	53213000	1	Control Panel with Decal
27	02496251	1	Bracket, Lever Shifter
28	53212000	1	Handlebar with Decal
29	03247251	1	Handlebar, Lower
30	07531700	2	Knob, Wing .31-18
31	07047100	4	Bolt Serrated Hex Flange Washer Head .31-18 x .62 Grade 5
32	03802700	2	J Bolt .31-18
33	06435700	2	Washer, Flat Steel .38 x .875 x .083
34	06307400	2	Washer, Locking .31 x .097 Heavy
35	06446800	2	Washer, Saddle .32 x .94 x .062
36	06543500	3	Nut, Locking Top Flange .25-20
37	05952500	3	Bolt, Hex .25-20 x 1.50 Grade 5
38	06220100	1	Bolt, Round Head Square Neck .25-20 x 1.25
39	03804851	1	Anchor, Cable
40	07517000	3	Cap, Vinyl .25 I.D.
41	05514500	4	Bushing, Flange .325 x .444 x .44 x .56
42	05717600	1	Ring, Retaining, External .25 x .010
43	06813600	2	Rivet-Pop, .187 x .45 Stainless Steel Dome FBF64

# AUGER AND CHUTE

Model 932037, 038, 039, 505, 507, 508 (\* see serial number table on page 18 for serial number range)





## AUGER AND CHUTE

**Model 932037, 038, 039, 505, 507, 508 (\* see serial number table on page 18 for serial number range)**

Item	Part No.	Qty.	Description
1	06529700	9	Nut, Locking Center .25-20 (037, 039, 505, 507, 508)
	06529700	7	Nut, Locking Center .25-20 (038)
2	03237751	1	Chute Strap (037, 039, 505, 507, 508)
3	53208400	1	Chute, Discharge with Cap and Decal
4	06220800	1	Bolt, Round Head Square Short Neck .31-18 x .75
5	05947900	2	Bolt, Hex .25-20 x .50 Grade 5 (037, 039, 505, 507, 508)
6	00170200	1	Device, Snow Cleanout
7	06813600	2	Rivot-Pop .187 x .45 Stainless Steel Dome FBF64
8	00170300	1	Mount, Snow Cleanout
9	53213300	1	Housing, 24" Blower (037, 039, 505, 508)
	53212800	1	Housing, 20" Blower (038, 507)
10	07412000	6	Screw-Tapping .25-20 x .50 *
11	02483859	2	Runner, Double Flange
12	06529600	4	Nut, Locking Center .38-16
13	06435700	4	Washer, Flat Steel .38 x .88 x .08
14	05500012	2	Bushing-Flange, Nylon .75" I.D.*
15	00275200	2	Bushing, Rake Shaft .75" *
16	53213100	1	Rake Right Hand 24" with Zerks (Includes Items 18) (037, 039, 505, 508)
	53213200	1	Rake Left Hand 24" with Zerks (Includes Items 18) (037, 039, 505, 508)
	53212300	1	Rake Right Hand 20" with Zerks (Includes Items 18) (038, 507)
	53212400	1	Rake Left Hand 20" with Zerks (Includes Items 18) (038, 507)
17	53200500	2	Shear Bolt with Nut (Includes Items 1)
18	07061300	2	Zerk, Fitting .25 x .125
19	07412900	4	Screw, Tapping .38-16 x .50 Hex Washer Head
20	06437200	2	Washer, Flat Steel .34 x .69 x .065
21	06529800	1	Nut, Locking Center .31-18
22	01320200	1	Wave Washer
23	06416800	1	Washer, Plastic .39 x .88 x .06
24	06214300	5	Bolt, Round Head Square Neck .25-20 x .50
25	03208159	1	Scraper Blade 24" (037, 039, 505, 508)
	03206759	1	Scraper Blade 20" (038, 507)
26	06437300	5	Washer, Flat Steel .28 x .62 x .065
27	06211800	4	Bolt, Round Head Square Neck .38-16 x .75
28	06543500	6	Nut, Top Locking Flange .25-20*
29	05932000	6	Bolt-Hex .25-20 x .63 *
30	00354259	2	Spacer, Flange *
31	03207600	2	Flange, Bearing *
32	05503900	2	Bushing-Flange .750 x 1.00 x .625 x 1.25 *
33	06441400	2	Washer-Flat-Steel .754 x 1.125 x .062 *

## AUGER AND CHUTE

Model 932037, 038, 039, 505, 507, 508 (\* see serial number table on page 18 for serial number range)

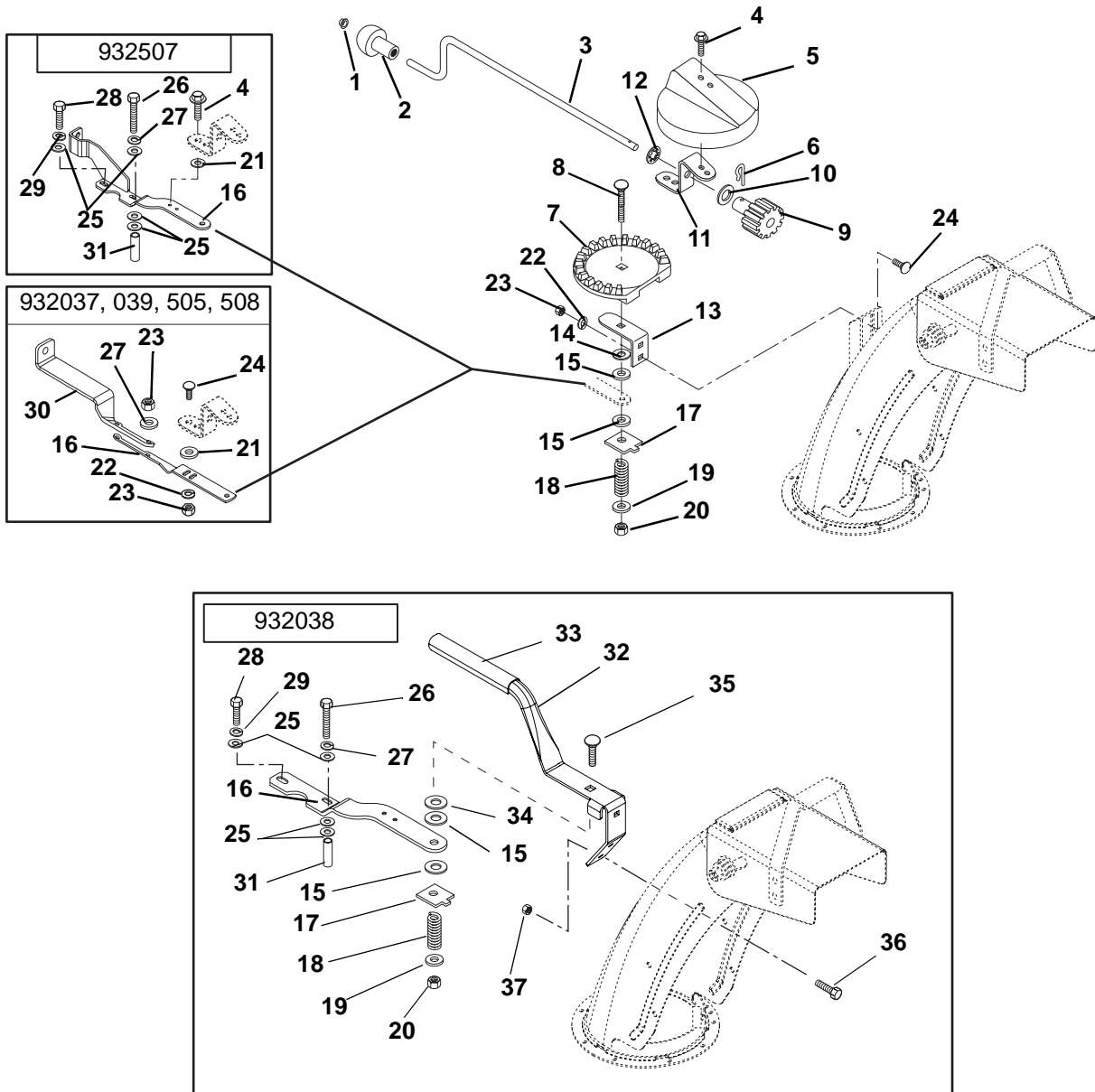
Auger and Chute Serial Number Ranges			
Item	Part Number	Model	Serial Range
<b>10</b>	07412000	932037 932038 932039 932505 932507 932508	4501 & up 101 & up 101 & up 1612 & up 101 & up 201 & up
<b>14</b>	05500012	932037 932038 932039 932505 932507 932508	4501 & up 101 & up 101 & up 1612 & up 101 & up 201 & up
<b>15</b>	00275200	932037 932038 932039 932505 932507 932508	4501 & up 101 & up 101 & up 1612 & up 101 & up 201 & up
<b>28</b>	06543500	932505 932508	1501–1611 101–200
<b>29</b>	05932000	932505 932508	1501–1611 101–200
<b>30</b>	00354259	932505 932508	1501–1611 101–200
<b>31</b>	03207600	932505 932508	1501–1611 101–200
<b>32</b>	05503900	932505 932508	1501–1611 101–200
<b>33</b>	06441400	932505 932508	1501–1611 101–200

# NOTES

---

# DISCHARGE CHUTE CRANK

Model 932037, 038, 039, 505, 507, 508



PS0371

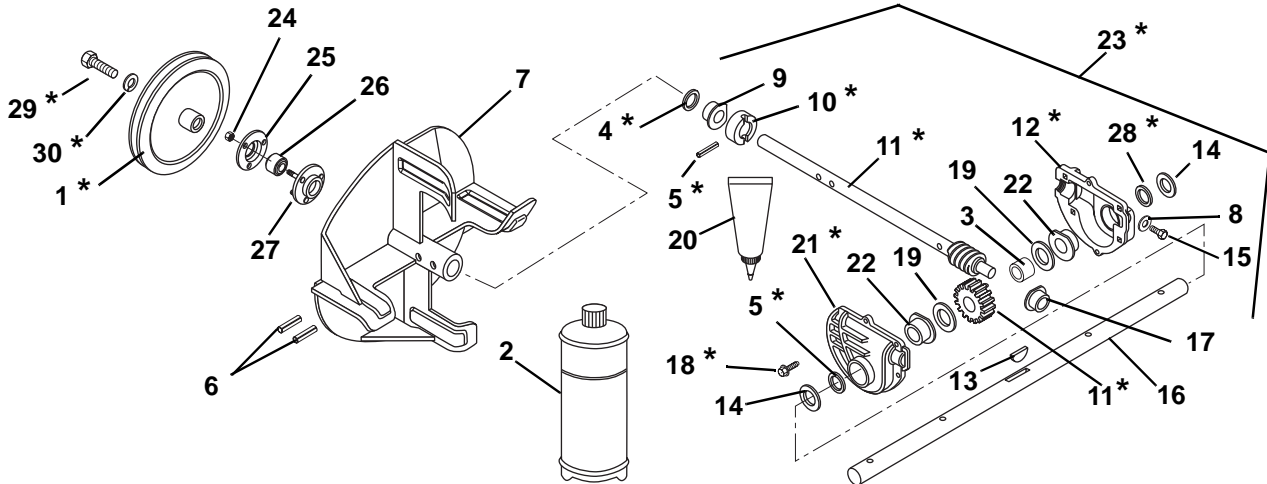
# DISCHARGE CHUTE CRANK

Model 932037, 038, 039, 505, 507, 508

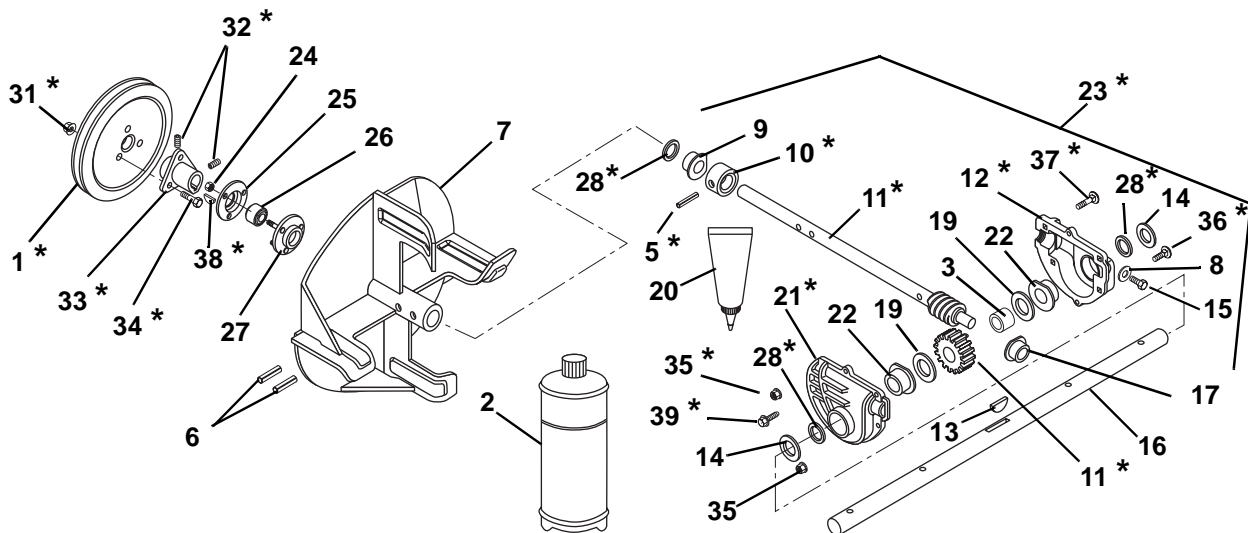
Item	Part No.	Qty.	Description
1	01019800	1	Cap, .38 Rod (037, 039, 505, 507, 508)
2	07508300	1	Knob (037, 039, 505, 507, 508)
3	03247700	1	Crank, Chute (037, 039, 505, 507, 508)
4	07412000	2	Screw, Hex Washer Head Self Tapping .25-20 x .50 (037, 039, 505, 508)
	07412000	4	Screw, Hex Washer Head Self Tapping .25-20 x .50 (507)
5	03223000	1	Cover, Gear (037, 039, 505, 507, 508)
6	06714500	1	Pin, Spring Clip (037, 039, 505, 507, 508)
7	03222900	1	Gear, Chute (037, 039, 505, 507, 508)
8	06224400	1	Bolt, Round Head Square Neck .38-16 x 2.50 Grade 5 (037, 039, 505, 507, 508)
9	53204400	1	Pinion Gear with Bracket (Contains Items 10-12) (037, 039, 505, 507, 508)
10	06436100	1	Washer, Flat Steel .63 x 1.01 x .062 (037, 039, 505, 507, 508)
11	03220551	1	Bracket, Gear (037, 039, 505, 507, 508)
12	03224300	1	Push Nut (037, 039, 505, 507, 508)
13	03220751	1	Gear Strap (037, 039, 505, 507, 508)
14	06439300	1	Washer, Flat Steel .38 x 1.50 x .062 (037, 039, 505, 507, 508)
15	01123800	2	Friction Washer
16	03247851	1	Bracket, Chute Support (507)
	03242751	1	Bracket, Chute Support (037, 039, 505, 508)
	03243051	1	Bracket, Chute Support (038)
17	03219000	1	Friction Plate
18	08320900	1	Spring, Compression .19 x .56 x 1.62
19	06436200	1	Washer, Flat Steel .41 x .81 x .065
20	06529600	1	Nut, Locking Center .38-16
21	06437300	2	Washer, Flat Steel .281 x .62 x .065 (037, 039, 505, 507, 508)
22	06308400	1	Washer, Locking .25 x .062 (507)
	06308400	3	Washer, Locking .25 x .062 (037, 039, 505, 508)
23	06533200	1	Nut, Hex .25-20 (507)
	06533200	5	Nut, Hex .25-20 (037, 039, 505, 508)
24	06219900	1	Bolt, Round Head Square Neck .25-20 x .75 (507)
	06219900	3	Bolt, Round Head Square Neck .25-20 x .75 (037, 039, 505, 508)
25	06439400	4	Washer, Flat Steel .328 x .875 x .062 (038)
	06439400	2	Washer, Flat Steel .328 x .875 x .062 (507)
26	05952500	1	Bolt, Hex .25-20 x 1.50 Grade 5 (038, 507)
27	06308000	1	Washer, Locking .25 x .077 Heavy (038, 507)
	06308000	2	Washer, Locking .25 x .077 Heavy (037, 039, 505, 508)
28	05947000	1	Bolt, Hex .31-18 x .75 Grade 5 (038, 507)
29	06307400	1	Washer, Locking .312 x .097 Heavy (038, 507)
30	03241151	1	Support, Chute Crank (037, 039, 505, 508)
31	03217300	1	Spacer .28 x .625 x .64 (038, 507)
32	03238951	1	Handle, Chute (038)
33	00345700	1	Grip, Chute Handle, Orange (038)
34	06442000	1	Washer-Flat Steel .563 x 1.38 x .109 (038)
35	06213400	1	Bolt-Round Head Square Neck .38-16 x 2.25 Grade 5 (038)
36	05947900	2	Bolt, Hex .25-20 x .50 (038)
37	06529700	2	Nut, Locking Center .25-20 (038)

# GEAR CASE AND IMPELLER

Model 932037, 038, 039, 505, 507, 508 (\* see serial number table on page 24 for serial number range)



PS0381



PS0380

# GEAR CASE AND IMPELLER

**Model 932037, 038, 039, 505, 507, 508 (\* see serial number table on page 24 for serial number range)**

Item	Part No.	Qty.	Description
1	00187000	1	Pulley, 4L with Hub .75 x 8.50 *
	07316300	1	Pulley-V without Hub, 1.25 x 8.50 *
2	00008000	1	Ariens 16 oz. Bottle of L2 Lube
3	05531200	1	Bushing, Sleeve .76 x 1.50 x .44
4	05600004	1	Seal, Oil .748 x 1.378 x .276 *
5	05804900	1	Pin, Groove .19 x 1.25 Type E *
	05804500	1	Pin, Groove .19 x 1.25 *
6	05800700	2	Pin, Roll .25 x 1.25
7	03204051	1	Impeller
8	06442500	1	Washer, Fiber .44 x .66 x .032
9	05511200	1	Bushing, Flange .75 x 1.00 x .75 x 1.25
10	00272100	1	Thrust Collar .75 I.D.
	03210300	1	Thrust Collar *
11	53212500	1	Shaft & Worm Gear Assembly *
	53200100	1	Shaft & Worm Gear Assembly *
12	00291100	1	Gear Case Casting, Machined Left Hand *
	02470600	1	Case, Gear Left Hand Large Bore *
13	06601400	1	Key, Woodruff .19 x .63 x .25 SAE 61
14	06439000	2	Washer, Flat Steel .81 x 1.50 x .14 *
15	07417000	1	Screw, Tapping .38-16 x .75 Rolok
16	00263000	1	Shaft, Rake 24" (037, 039, 505, 508)
	00260500	1	Shaft, Rake 20" (038, 507)
17	05520600	1	Bushing, Flange .50 x 1.00 x .75
18	07412400	6	Screw, Tapping Hex Washer Head .25-20 x 1.00 *
19	06416100	2	Washer, Hard Thrust .76 x 1.40 x .062
20	00031700	1	Loctite Gasket 518
21	00291200	1	Gear Case Casting, Machined Right Hand *
	02470700	1	Case, Gear Right Hand Large Bore *
22	05531100	2	Bushing, Flange .75 x 1.13 x .50 x 1.50
23	53212700	1	Gear Case Assembly- 24" (contains 3-5,8-13,15-22,28) (037, 039, 505, 508) *
	53212600	1	Gear Case Assembly- 20" (contains 3-5,8-13,15-22,28) (038, 507) *
	53213900	1	Gear Case Assembly- 24" (contains 3,5,8-13,15-17,19-22,28,35,37,39) (037, 039, 505, 508) *
	53214000	1	Gear Case Assembly- 20" (contains 3,5,8-13,15-17,19-22,28,35,37,39) (038, 507) *
24	06529700	3	Nut, Locking Center .25-20
25	01014200	1	Bearing Flange
26	05406300	1	Bearing, Ball .75 x 1.75 x .50
27	00301700	1	Bearing, Flange
28	05618900	2	Seal, Oil .75 x 1.375 x .250 *
	05618900	3	Seal, Oil .75 x 1.375 x .250 *
29	05900012	1	Bolt, Hex .31-24 x .75 Grade 5 with PreCote 80
30	06307400	1	Washer, Locking .312 x .097 Heavy
31	06530400	3	Nut, Locking Flange .31-18
32	06005500	2	Screw, Set .31-18 x .38
33	50202100	1	Hub Assembly (Includes Item 32)
34	07005300	3	Bolt, Serrated Round Head Slotted .31-18 x .75
35	06530100	4	Nut, Locking Flange .25-20 *
36	06219800	2	Bolt, Round Head Square Neck .25-20 x 1.00 Grade 5 *
37	06219700	2	Bolt, Round Head Square Neck .25-20 x 1.25 *
38	06600100	1	Key, Woodruff .19 x .88 x .38
39	07413000	2	Screw, Tapping Hex Washer Head 10-24 x .75 *

## GEAR CASE AND IMPELLER

Model 932037, 038, 039, 505, 507, 508 (\* see serial number table on page 24 for serial number range)

Gear Case and Impeller Serial Number Ranges			
Item	Part Number	Model	Serial Range
<b>1</b>	00187000	932037	5001 & up
		932038	5001 & up
		932039	5001 & up
		932505	1642 & up
		932507	501 & up
		932508	5001 & up
<b>4</b>	05600004	932037	5001 & up
		932038	5001 & up
		932039	5001 & up
		932505	1642 & up
		932507	501 & up
		932500	5001 & up
<b>5</b>	05804900	932037	5001 & up
		932038	5001 & up
		932039	5001 & up
		932505	1642 & up
		932507	501 & up
		932508	5001 & up
<b>5</b>	05804500	932037	4501–5000
		932038	101–5000
		932039	101–5000
		932505	1501–1641
		932507	101–500
		932508	101–5000
<b>10</b>	00272100	932037	5001 & up
		932038	5001 & up
		932039	5001 & up
		932505	1642 & up
		932507	501 & up
		932508	5001 & up
<b>10</b>	03210300	932037	4501–5000
		932038	101–5000
		932039	101–5000
		932505	1501–1641
		932507	101–500
		932508	101–5000
<b>11</b>	53212500	932037	5001 & up
		932038	5001 & up
		932039	5001 & up
		932505	1642 & up
		932507	501 & up
		932508	5001 & up
<b>11</b>	53200100	932037	4501–5000
		932038	101–5000
		932039	101–5000
		932505	1501–1641
		932507	101–500
		932508	101–5000

Gear Case and Impeller Serial Number Ranges			
Item	Part Number	Model	Serial Range
<b>12</b>	00291100	932037	5001 & up
		932038	5001 & up
		932039	5001 & up
		932505	1642 & up
		932507	501 & up
		932508	5001 & up
<b>12</b>	02470600	932037	4501–5000
		932038	101–5000
		932039	101–5000
		932505	1501–1641
		932507	101–500
		932508	101–5000
<b>18</b>	07412400	932037	5001 & up
		932038	5001 & up
		932039	5001 & up
		932505	1642 & up
		932507	501 & up
		932508	5001 & up
<b>21</b>	00291200	932037	5001 & up
		932038	5001 & up
		932039	5001 & up
		932505	1642 & up
		932507	501 & up
		932508	5001 & up
<b>21</b>	02470700	932037	4501–5000
		932038	101–5000
		932039	101–5000
		932505	1501–1641
		932507	101–500
		932508	101–5000
<b>23</b>	53212700	932037	5001 & up
		932039	5001 & up
		932505	1642 & up
		932508	5001 & up
<b>23</b>	53212600	932038	5001 & up
		932507	501 & up
<b>23</b>	53213900	932037	4501–5000
		932039	101–5000
		932505	1501–1641
		932508	101–5000
<b>23</b>	53214000	932038	101–5000
		932507	101–500



## GEAR CASE AND IMPELLER

Model 932037, 038, 039, 505, 507, 508 (\* see serial number table on page 24 for serial number range)

Gear Case and Impeller Serial Number Ranges			
Item	Part Number	Model	Serial Range
<b>28</b>	05618900 (Qty. 2 with 53212600 and 53212700)	932037	5001 & up
		932038	5001 & up
		932039	5001 & up
		932505	1642 & up
		932507	501 & up
<b>28</b>	05618900 (Qty. 3 with 53213900 and 53214000 )	932037	4501-5000
		932038	101-5000
		932039	101-5000
		932505	1501-1641
		932507	101-500
<b>29</b>	05900012	932037	5001 & up
		932038	5001 & up
		932039	5001 & up
		932505	1642 & up
		932507	501 & up
<b>30</b>	06307400	932037	5001 & up
		932038	5001 & up
		932039	5001 & up
		932505	1642 & up
		932507	501 & up
<b>31</b>	06530400	932037	4501-5000
		932038	101-5000
		932039	101-5000
		932505	1501-1641
		932507	101-500
<b>32</b>	07316300	932037	4501-5000
		932038	101-5000
		932039	101-5000
		932505	1501-1641
		932507	101-500
<b>32</b>	06005500	932037	4501-5000
		932038	101-5000
		932039	101-5000
		932505	1501-1641
		932507	101-500
<b>33</b>	50202100	932037	4501-5000
		932038	101-5000
		932039	101-5000
		932505	1501-1641
		932507	101-500
<b>33</b>	50202100	932508	101-5000

Gear Case and Impeller Serial Number Ranges			
Item	Part Number	Model	Serial Range
<b>34</b>	07005300	932037	4501-5000
		932038	101-5000
		932039	101-5000
		932505	1501-1641
		932507	101-500
<b>35</b>	06530100	932037	4501-5000
		932038	101-5000
		932039	101-5000
		932505	1501-1641
		932507	101-500
<b>36</b>	06219800	932037	4501-5000
		932038	101-5000
		932039	101-5000
		932505	1501-1641
		932507	101-500
<b>37</b>	06219700	932037	4501-5000
		932038	101-5000
		932039	101-5000
		932505	1501-1641
		932507	101-500
<b>38</b>	06600100	932037	4501-5000
		932038	101-5000
		932039	101-5000
		932505	1501-1641
		932507	101-500
<b>39</b>	07413000	932037	4501-5000
		932038	101-5000
		932039	101-5000
		932505	1501-1641
		932507	101-500
<b>39</b>	07413000	932508	101-5000



Ariens Company  
655 West Ryan Street  
P.O. Box 157  
Brillion, WI 54110-0157  
920-756-2141  
Fax 920-756-2407  
[www.ariens.com](http://www.ariens.com)