

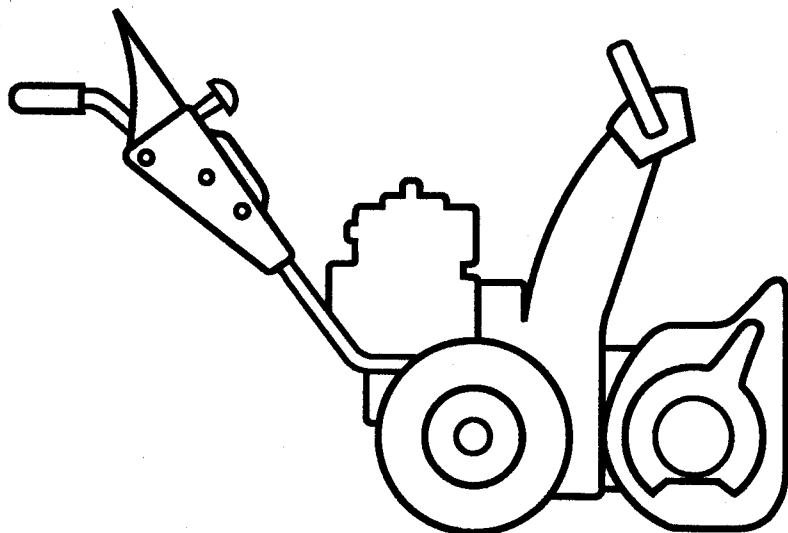
Ariens®

924

Series

Sno-Thro®

Parts Manual



A Message to Ariens Parts Manual User

Your Ariens Dealer will be happy to supply any service or advice which may be required to keep your Ariens equipment operating at peak efficiency. He stocks genuine Ariens parts and lubricants; manufactured with the same precision and skill as the original equipment. His factory trained staff is kept well informed on the best methods of servicing Ariens equipment and is ready and able to service you. If

engine repairs or services are required, they can be obtained from an Ariens Dealer or from an authorized engine manufacturer's service center. If service is required, be prepared to supply the service person with the Model Number and Serial Number of the equipment and engine, as well as a full description of the problem encountered.

Introduction

The information contained herein is intended for use by Ariens Dealer's trained servicemen and serves as a supplement to and reminder of training sessions conducted by Ariens Company. Before you attempt any repair, adjustment or maintenance project, be certain that you have read and fully understand the instructions in your Owner's and Repair Manuals. Understand and follow each Danger, Warning, Caution and all instructions exactly as given. Also be sure that you have all tools, replacement parts and other materials required to complete the project.

A network of Ariens Dealers and Distributors is maintained in order to assure you of an adequate supply of replacement parts and technical assistance. Your local Ariens Dealer is required to order parts through his distributor. When replacement parts are required, use only genuine Ariens parts. Failure to do so may result in product malfunction and possible injury to operator and/or bystander.

NOTE: All references to "Left", "Right", "Front" and "Rear" are given from operators position.

NOTE: The descriptions and specifications contained in this manual were in effect at the time the manual was approved for printing. Ariens Company reserves the right to discontinue models without notice and without incurring obligation. The equipment described within this manual may not be identified as either standard or optional and various illustrations may not all be applicable to your particular unit. If you have questions, always check with your Ariens Dealer.

NOTE TO ARIENS DEALERS: Refer to your current Parts Price List for suggested parts stocking. Service training for dealers is available at the Ariens Service School. See your Ariens Distributor for the latest school schedule.

Contents

Decals	2
Handlebars and Controls	4
Speed Selector and Wheels	6
Engine and Belt Drive	8
Reduction Drive	10
Friction Wheel Drive	12
Auger/Impeller	14
Gear Case - Cast Iron	16
Gear Case - Aluminum	18
Brush	22
Alternator/Headlight	24
120 Volt Starter	25
Tecumseh Air Cleaner	26
Slicer Bar	27

Model Number - Sno Thro _____
Serial Number - Sno Thro _____
Model Number - Engine _____
Serial Number - Engine _____

This manual covers the models listed. Specific Model and Serial Numbers of your unit and attachment are on a label on the unit. Record these numbers in the space provided and use them whenever parts or service are required.

Attachments

Model 824004 - 36" Rotary Brush
Serial No. 000501 and up

How To Order Repair Parts

This Parts Manual is arranged for easy identification of genuine Ariens Service parts that are illustrated showing their relationship to one another. Item numbers in the illustrations correspond to Item numbers in the first column of the parts list and are followed by the Ariens Part Number, Description and Quantity with variations between models and/or serial numbers designated in the part description. SN 000000> means this serial number and up, with SN <000000 meaning up to this serial number.

Model 924080 (ST T8) 8HP Sno-Thro Tractor Serial No. 000101 and up	Model 924086 (ST1028) 10HP 28" Sno-Thro Serial No. 000101 and up
Model 924081 (ST824e) 8 HP 24" Sno-Thro Serial No. 000101 and up	Model 924087 (ST1232e) 12HP 32" Sno Thro Serial No. 000101 and up
Model 924082 (ST824) 8 HP 24" SnoThro Serial No. 000101 and up	Model 924088 (ST1028e) 10HP 28" Sno Thro Serial No. 000101 and up
Model 924083 (ST828) 8HP 28" Sno-Thro Serial No. 000101 and up	Model 924089 (ST824e) 8HP 24" Sno Thro Serial No. 000101 and up
Model 924084 (ST1032) 10HP 32" Sno-Thro Serial No. 000101 and up	Model 924090 (ST6036) 36" Sno Thro Serial No. 000101 and up
Model 924085 (ST1236) 12HP 36" Sno-Thro Serial No. 000101 and up	

NOTE: For models 924087, 88, 89, & 90 see page 20.

NOTE: Most hardware descriptions are given in decimals. Refer to the following table to find the equivalent in fractions:

.125 = 1/8	.562 = 9/16
.188 = 3/16	.625 = 5/8
.250 = 1/4	.688 = 11/16
.312 = 5/16	.750 = 3/4
.375 = 3/8	.812 = 13/16
.438 = 7/16	.875 = 7/8
.500 = 1/2	.938 = 15/16

Order parts from your nearest authorized Ariens Dealer. For prompt service when ordering parts, provide the following information.

- MODEL AND SERIAL NUMBERS OF EQUIPMENT**
- PART NUMBER (not Item Number)**
- DESCRIPTION**
- QUANTITY REQUIRED**

Decals

Models 924080,81, 82, 83, 84,85,86,87,88,89,90

SAFETY INSTRUCTIONS
 READ AND UNDERSTAND ALL SAFETY INSTRUCTIONS AND WARNINGS BEFORE OPERATING THIS EQUIPMENT.

This engine has provisions for electric starter and alternator/light kits.

This engine has provisions for electric starter kit.

Cast Iron Bore

Attention
 When using summer attachments, remove heater box and install air cleaner.

Engine Instructions
CAUTION:
 For your personal protection, read all safety notes in engine owner's manual.
OPERATION:
 For detailed lubrication, starting & operating instructions, see engine owner's manual & equipment mfr.'s instruction.
LUBRICATION:
 Summer SAE 30 Oil
 Winter SAE 5W-30 Oil

DANGER

ROTATING PARTS
 Stop engine & remove ignition key before clearing.

WARNING

ROTATING PARTS
 Keep clear of auger while engine is running.
SAFETY INSTRUCTIONS
AVOID POTENTIAL HAZARDS

1. Read owner's manual for operating and safety instructions.
2. Observe all labels and instructions.
3. Stop engine, remove ignition key and wait for all movement to stop before servicing or clearing machine.
4. Never allow children to operate the equipment. There is also a rule to operate the equipment without proper instruction.
5. Keep the area of operation clear of all persons, especially children.
6. Never direct discharge at bystanders or allow anyone at foot of unit.
7. Keep unit properly maintained and serviced. Fill holes, guards and protect areas as placed.

10

9

8

12

14

13

15

1

2

3

4

5

6

7

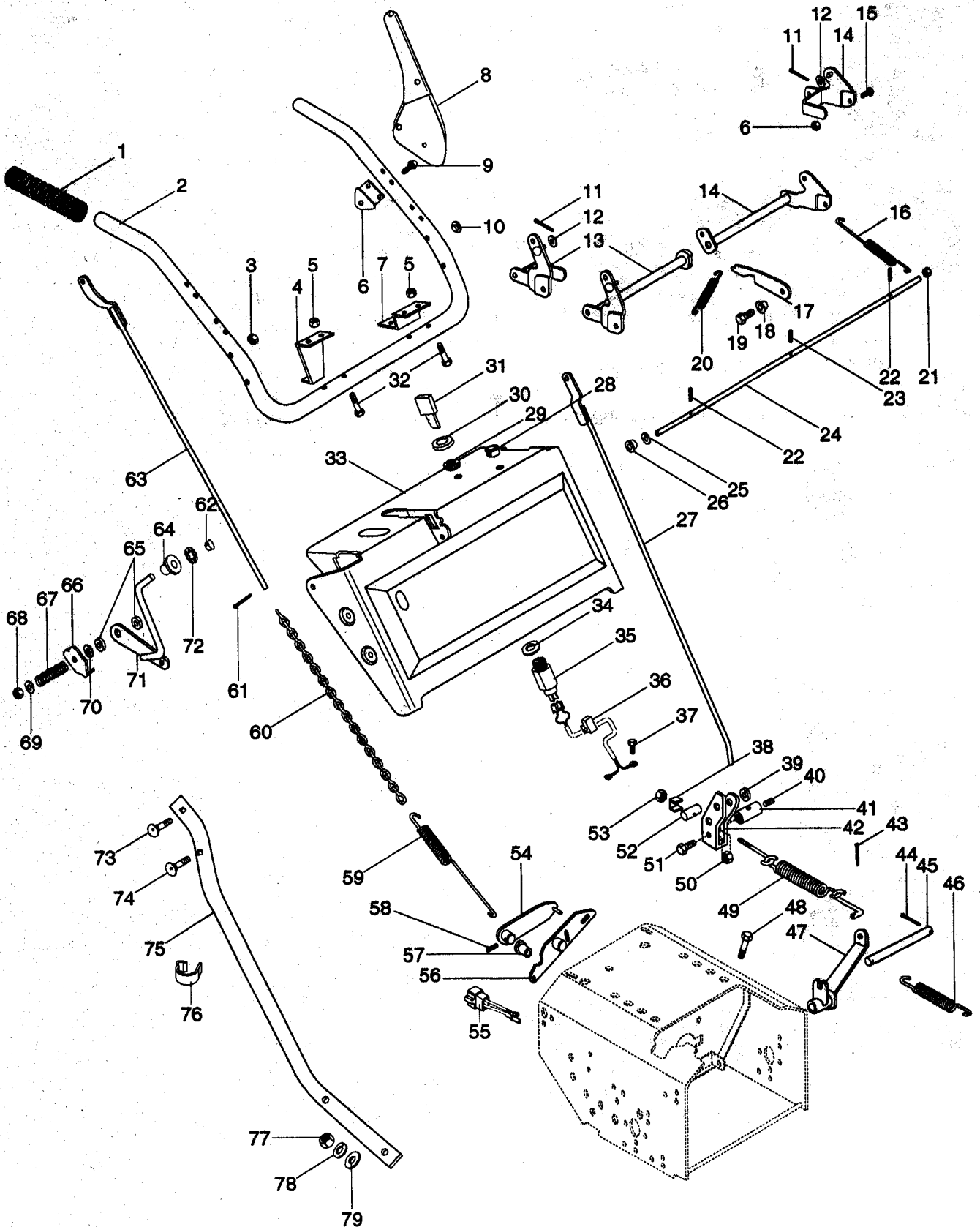
Decals

Models 924080, 81, 82, 83, 84,85, 86, 87, 88, 89, 90

ITEM NO.	PART NO.	DESCRIPTION	QTY	ITEM NO.	PART NO.	DESCRIPTION	QTY
1	07703600	Decal 924-Switch (87,88,89)	1	10	07882800	Decal-Instruction	1
2	07769000	Decal-Safety Instruct.	1		07883200	Decal-Instruction French	1
3	07763800	Decal-Dash (80, 81, 82)	1		07883400	Decal-Engine Instruction Fi	1
	07763700	Decal-Dash (83, 84, 85, 86)	1		07883900	Decal Attachments (Sweden)	1
4	07763600	Decal 824 (80,82,89)	1		07886500	Decal-Attachments-Norway)	1
	07763500	Decal 824S (81)	1		07895800	Decal-Instruction-Germany	1
	07763400	Decal 828 (83)	1	11	07843200	Hot Surface Decal	1
	07763300	Decal 1032 (84)	1	12	07797600	Decal-Cast Iron Bore	1
	07763200	Decal 1236 (85, 65)	1	13	07860700	Elect Start Decal (84, 85, 86)	1
	07758300	Decal 1028 (88)	1	14	07799600	Provisions Decal	1
	07703100	Decal 1232 (87)	1			(80, 81, 82, 83)	
5	07860300	Decal Choke	1	15	07787300	Decal 8 HP & Primer	1
6	07860400	DecalThrottle	1			(80, 81, 82, 83,89)	
7	07864400	Decal Differential Lock	1		07787400	Decal 10 HP & Primer	1
8	07799100	Decal-Danger	1			(84, 86, 88)	
9	07799200	Danger Decal Rotating Parts	1		07781300	Decal 12 HP & Primer (85, 87)	1

Handlebars and Controls

Models 924080,81,82,83,84,85,86



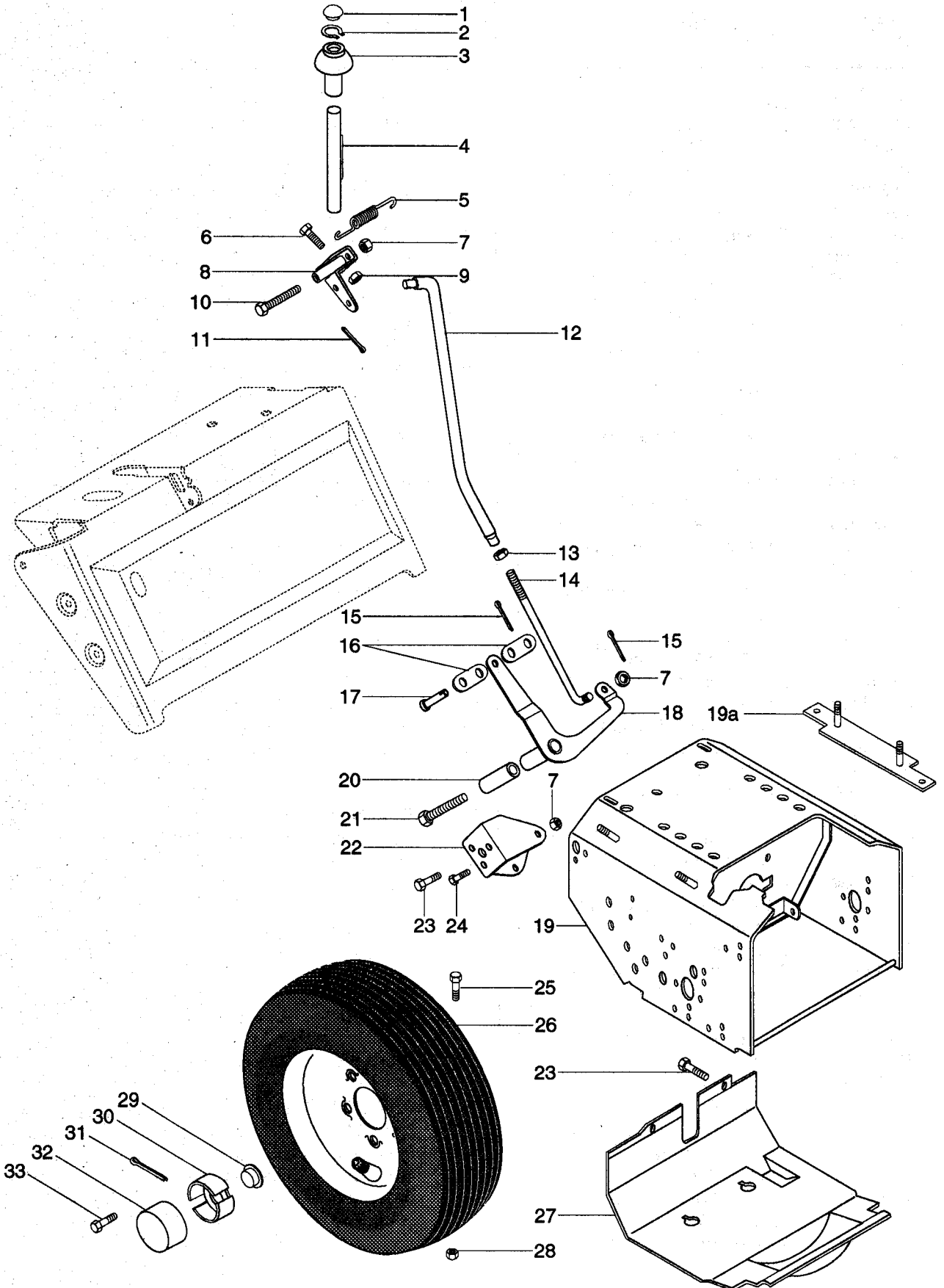
Handlebars and Controls

Models 924080, 81, 82, 83, 84,85, 86

ITEM NO.	PART NO.	DESCRIPTION	QTY	ITEM NO.	PART NO.	DESCRIPTION	QTY
1	07518700	Handle Grip	2	39	02408600	Spacer	1
2	02462900	Upper Handlebar	1	40	06001200	Scr-Set .32-18 x 38	1
3	06507800	Nut-Flg .321-18 PI	2			Skhcupnl Oh	
4	02463200	Bracket Rod (83, 84, 85, 86)	1	41	02213500	Rod Adapter	1
5	06504000	Nut-Lk-Ctr .250 x 20 PI	2	42	02422800	Clutch Engagement Yoke	1
6	02464700	Handle Pivot	2	43	06700100	Pin Cotr .09 x .75 PI	1
7	02463300	Bracket, Chute Crank	1	44	06700200	Pin Cotr .09 x 1.0 PI	2
8	02462100	Clutch Lever	2	45	02406900	Fork Pivot Rod	1
9	07403900	Scr-Tap 12-14 x 1.50	4	46	08309400	Sg-Tens	1
		Crovh PI Bt				.080 x .73 x 3.06 Wld 20	
10	07511800	Bumper	2	47	02427200	Clutch Fork	1
11	06703400	Pin Cotr .09 x .05 PI	2	48	05900400	Blt-Hex .038-16 x 1.00 PI	4
12	06406500	Wshr-FI-Stl	2	49	52404700	Spring Assembly	2
		.268 x .562x .046 PI		50	06504200	Nut-Lk .312-18 Gr A PI	4
13	02461800	RH Lever	1	51	05902200	Blt-Hex .31-18 x .75 PI Gr 2	1
		(80, 82, 83, 84, 85, 86)		52	02422700	Adapter	1
	02465100	RH Lever (81)	1	53	06506200	Nut-Lk-Nyl .312-18 PI	1
14	02462300	LH Lever	1	54	03201000	Lever Clutched	1
		80, 82, 83,84, 85, 86)		55	02458400	Jumper (83, 84, 85, 86)	1
	02465200	LH Lever (81)	1	56	02442900	Lever	1
15	05910400	Blt-Hex .25-20 x .38 PI Gr 2	2	57	05503700	Bshg-Flg Ny	1
16	08325500	Sg-Tens	2			.500 x .625 x .312 x .750	
		.051 x .50x 5.12 Wld 10.4		58	05802600	Pin Roll .156 x .88	1
17	02463400	Latch Arm	1	59	08318300	Sg-Tens	1
18	05516100	Bshg-Flg	1			.091 x .56 x 6.12 Wld 40	
		.265 x .437 x .339 x .62		60	00227000	Clutch Chain	1
19	05900100	Blt-Hex .25-20 x .75 PI Gr 2	1	61	06702400	Pin Cot .12 x .75 PI	1
20	08310900	Sg-Tens	1	62	07516700	Hole Plug	1
		.48 x .44 x 1.75 Wld 9		63	02463700	Attachment Clutch Rod	1
21	06519900	Nut-Crown .312-18	2	64	07508300	Knob	1
22	05803300	Pin Roll .156 x .75	2	65	01123800	Friction Washer	1
23	05800900	Pin Roll .125 x 1.00	1			(83, 84, 85, 86)	
24	02463000	Rod	1	66	02463900	Pressure Flange	1
25	06405700	Wshr-FI-Stl	2	67	08320900	Sg-Comp .187 x .56 x 1.62	1
		.323 x .625 x .062 PI		68	06503900	Nut-Lk .375-16 Gr A PI	1
26	05516200	Bshg-Flg	4			(83, 84, 85, 86)	
		.325 x .465 x .333 x .685		69	06404300	Wshr-FI-Stl .406 x .812 x .065	1
27	02464300	Traction Clutch Rod	1			PI (83, 84, 85, 86)	
28	07509500	Snap Bushing	1	70	02463100	Spacer	1
29	06517300	Nut-Panel .625-32 Greco	1	71	02463800	Cap Lever (83, 84, 85, 86)	1
30	07517700	Cap-Ignition Switch	1	72	05711300	Rg-Rtng-Ext .875 x .010	1
31	02460700	Key	1	73	06202300	Blt-Rdhdsqnk	2
32	05905600	Bit-Hex .25-20 x 1.25 PI Gr 2	4			.31-18 x 1.50 PI	
33	52407100	Panel w/Decal (80, 81, 82)	1	74	06205100	Blt-Rdhdsqnk	2
	52407200	Panel w/ Decal	1			.31-18 x 2.75 Shtpl	
		(83, 84, 85, 86)		75	02462800	LH Lower Handlebar	1
34	06301900	Wshr-Lock Int .625 x .045 PI	1		02462700	RH Lower Handlebar	1
35	52406900	Switch Assembly	1	76	06901200	Clamp	2
36	02464800	Shorting Wire	1	77	06501800	Nut-Hex .375-16	2
37	07401500	Scr-Tap .25-20 x .370	1	78	06300400	Wshr-Lock .375 x .115 Hvy PI	4
		Hwh PI Tr		79	06400800	Wshr-FI-Stl	3
38	01054200	Adapter Spacer	1			.438 x 1.0 x .083 PI	

Speed Selector and Wheels

Models 924080,81,83,84,85,86



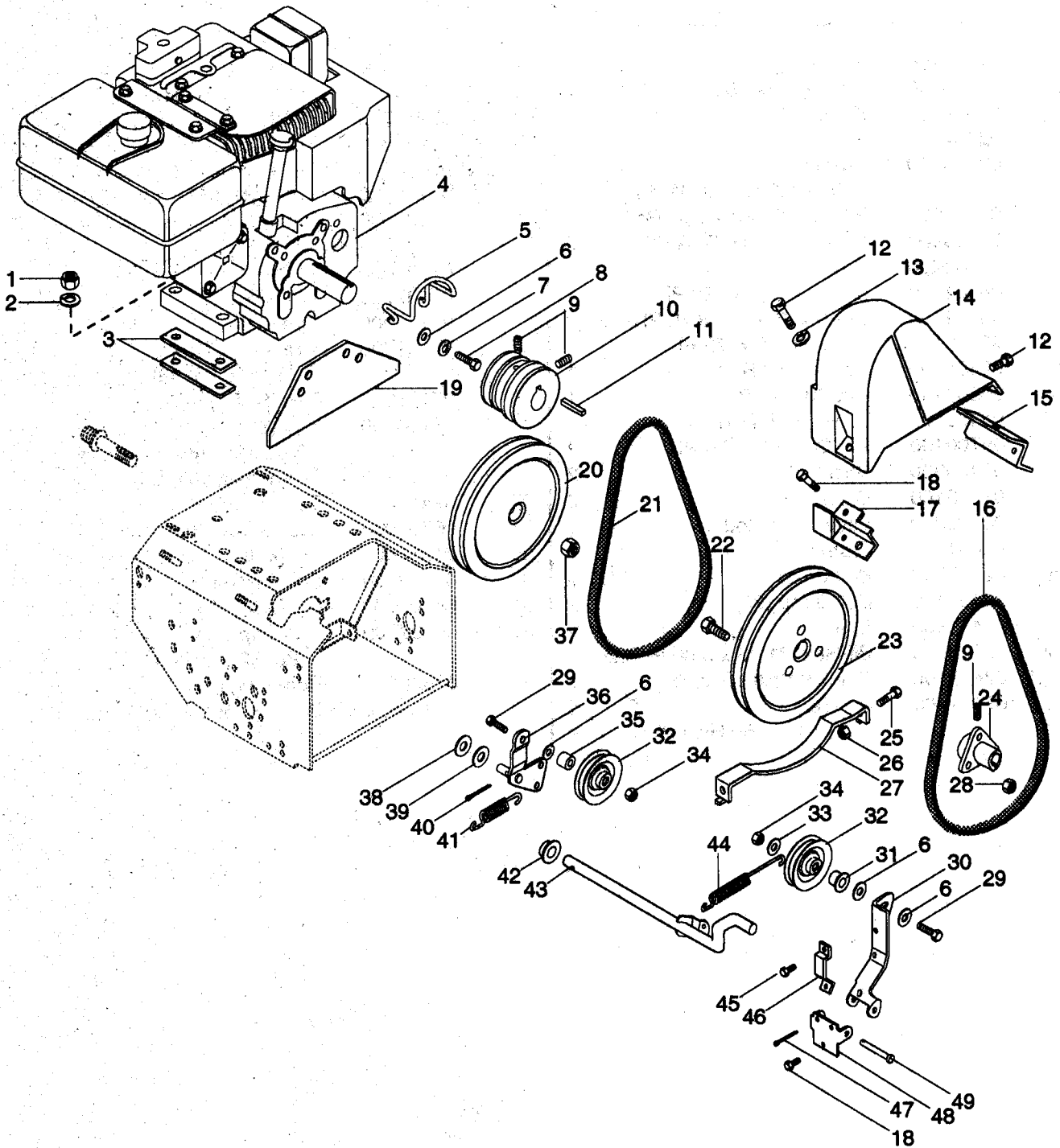
Speed Selector and Wheels

Models 924080, 81, 82, 83, 84,85, 86

ITEM NO.	PART NO.	DESCRIPTION	QTY	ITEM NO.	PART NO.	DESCRIPTION	QTY
1	07516700	Hole Plug	1	24	05903900	Blt-Hex	1
2	05708600	Rg-Rtng-Ext .500 x .015	1			.31-18 x .50 Hwh PI Tr	
3	07509600	Knob	1	25	05917300	Blt-Hex .25-20 x 1.75 Gr 2 (81)	2
4	02444800	Rod	1	26	07105000	Tube (81)	2
5	08318400	Sg-Tens .055 x .33 x 1.31 Wld 7	1		07103700	Tube (80, 82, 83, 86)	2
6	05913200	Blt-Hex .25-20 x 1.00 Gr 2	1		07108700	Tube (84, 85)	2
7	06504200	Nut-Lk .312-18 Gr A PI	3		07121500	Rim & Hub Assembly	2
8	02462600	Pivot	1			4.10/3.50 x 6 (81)	
9	06504000	Nut-Lk-Ctr .250-20 PI	1		07107600	Whl (80, 82, 83, 86)	2
10	05919200	Blt-Hex .31-18 x 3.50 PI Gr 2	1		07107700	Whl (84, 85)	2
11	06700100	Pin-Cotr .09 x .75 PI	1		07125000	Tire (81)	2
12	02465700	Upper Shift Rod	1		07121800	Tire 4.80-8.Nhs	2
13	06503100	Nut .312-18 PI	1			(80, 82, 83, 86)	
14	02465600	Lower Shift Rod	1		07121600	Tire (84,85)	2
15	06700100	Pin-Cotr .09 x .75 PI	3		07126000	Whl (81)	2
16	02449300	Shift Link	2		07121900	T/Whl Assy (80, 82, 83, 86)	2
17	01215100	Clevis Pin	2	27	07121700	T/Whl Assy (84, 85)	2
18	02423200	Lever Shift Rod	1	28	02443000	Bottom Cover	1
19	02401900	Frame	1	29	06507000	Nut-Lk Top .250-20 PI (81)	2
19a	02401800	Bolt Strap	2	30	01036600	Pushnut	1
	02402400	Bolt Strap (85)	2	31	02403300	Spindle Cup	1
20	02411500	Spacer	1	32	06702600	Pin Cotr .18 x 1.0 PI (82, 89)	2
21	05913600	Blt-Hex .31-18 x 3.00 PI Gr2	1	33	00337700	Hub Cap	1
22	02423100	Bracket Shift Lever	1			(80, 82, 83, 84, 85, 86)	
23	07401400	Scr-Tap .312-18 x .50 Hwh PI Tr	5		07508700	Hole Plug (81)	2
					07406300	Scr-Tap .500-20 x .62	8

Engine and Belt Drive

Models 924080,81,82,83,84,85,86,



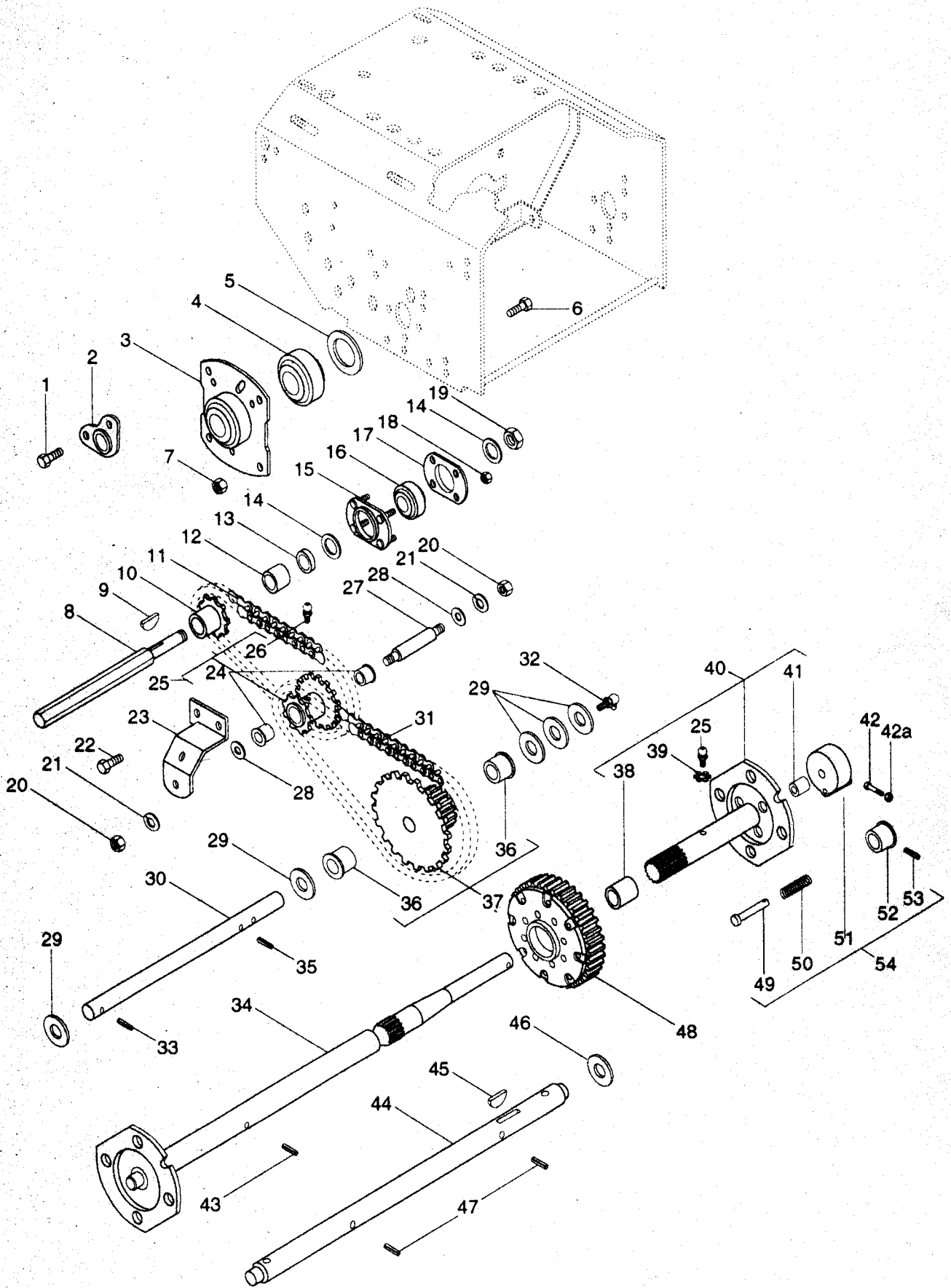
Engine and Belt Drive

Models 924080, 81, 82, 83, 84, 85, 86

ITEM NO.	PART NO.	DESCRIPTION	QTY	ITEM NO.	PART NO.	DESCRIPTION	QTY
1	06501500	Nut-hex .312-18	4	22	07006000	Blt-Serrdhd Sl .31-18 x .75 PI	3
2	06300300	Wshr-Lock .312 ID Heavy PI	4	23	07307000	Ply-V 9.0 x 1.25 3 Blt	1
	06301800	Wshr-Lock Int .313 x .030 PI (85)	4	24	02438900	Hub	1
3	02458700	Spacer (85)	4	25	05902800	Blt-hex .25-20 x .50 PI Gr 2	2
4	08223300	8HP Tec Engine (80, 81, 82, 83, 89)	1	26	06504000	Nut-Lk-Ctr .250-2. PI	2
	08225500	Engine-10HP Tec 18 Watt Altr (84, 86, 88)	1	27	02423600	Belt Retainer (83, 84, 85, 86)	1
	08227500	Engine-Ohsk 120 Tec W/18 Watt (85)	1	28	06507800	Nut-Flg .312-18 PI	3
5	02425300	Belt Finger	1	29	05906900	Blt- Hex .31-18 x 1.25 PI Gr 2	2
6	06400200	Wshr-FI-Stl .38 x .875 x .083 PI	1	30	02434800	Idler arm	1
7	06303200	Wshr-Lock ext .313 x .030 PI	2	31	01213100	Bearing Spacer	1
8	05905300	Blt-Hex .31-24 x .75 PI Gr 5	2	32	02457400	Idler	2
9	06001200	Scr-Set .32-18 x .38 Skhcupnl Oh	4	33	06400700	Wshr-FI-Stl .312 x .734 x .065 PI	1
10	02402100	Engine Sheave (81)	1	34	06504200	Nut-Lk .312-18 Gr A PI	2
	02435700	Engine Sheave (80, 82, 83, 84, 85, 86)	1	35	01103100	Spacer	1
11	06601800	Key-Str .25 x 1.75 x .25	1	36	02453700	Idler Arm	1
12	07404900	Scr-Tap .25-20 x .50 Hwhpl	2	37	06507700	Nut-Lk-Nyl .625-18 PI	1
13	06406500	Wshr-FI-Stl .38 x .875 x .083 PI	1	38	01026000	Wave Washer	1
14	02440600	Belt Cover	1	39	06405200	Wshr-FI-Stl .382 x .812 x .24 PI	1
15	02450100	LH Support (85)	1	40	06700400	Pin Cotr .12 x 1.0 PI	1
16	07208600	V-Belt (82)	1	41	08309400	Sg-Tens .80 x .73 x 3.06 Wld 20	1
	07210800	V-Belt (81, 83, 84, 86)	1	42	05503700	Bshg-Flg Ny .500 x .625 x .312 x .750	1
	07213000	V-Belt (85)	1	43	02442800	Activating Shaft	1
17	02450700	RH Support (85)	1	44	08317200	Sg-Tens .047 x .44 x 3.37 Wld 1.47	1
18	07401500	Scr-Tap .250-20 x .37 Hwh PI Tr	5	45	07405400	Scr-Tap 10-24 x .375 Hwh PI Tr	2
19	02459700	Plate (85)	1	46	02435300	Return Clip	1
20	07304900	Ply-V 8.00 x 1.0 W/Key Clark	1	47	06700100	Pin Ctr .09 x .75 PI	1
21	07206600	V-Belt (80, 82, 83, 84, 86))	1	48	02434700	Bracket	1
	07209800	V-Belt (81)	1	49	02435400	Clevis Pin	1
	07213100	V-Belt (85)	1				

Reduction Drive

Models 924080,81,82,83,84,85,86



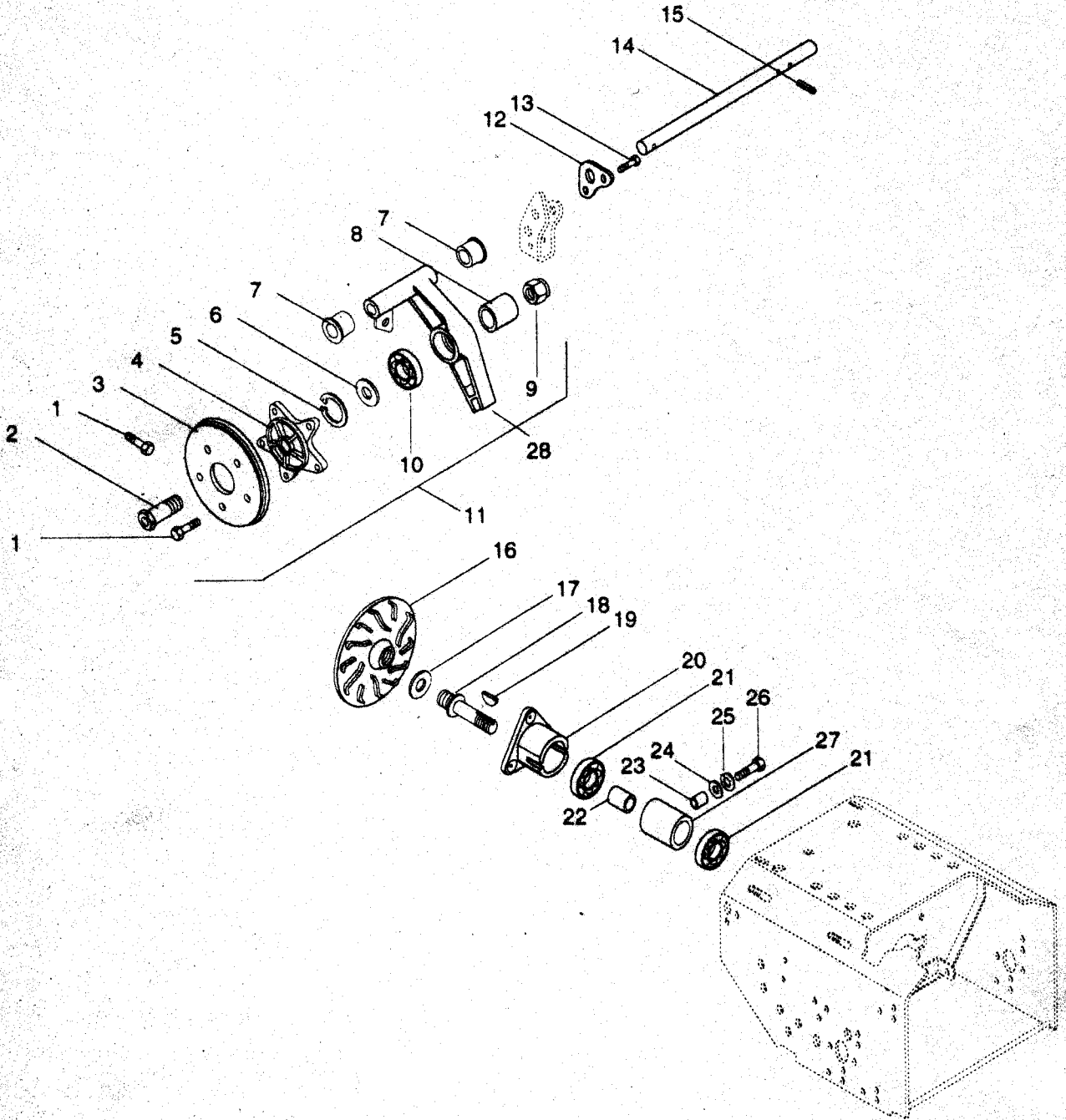
Reduction Drive

Models 924080, 81, 82, 83, 84,85, 86

ITEM NO.	PART NO.	DESCRIPTION	QTY	ITEM NO.	PART NO.	DESCRIPTION	QTY
1	07401500	Scr-Tap .250-20 x .37 Hwh PI Tr	6	26	07012600	Ftg-Lube .25-28 x .256	2
2	02407700	Shaft Support	3	27	02447500	Reduction Shaft (80, 82, 83, 84, 85, 86)	1
3	01202300	Bearing Support (81)	2	28	06409300	Wshr-FI-Stl .382 x .812 x .062 (80, 82, 83, 84, 85, 86)	2
	02457800	Bearing Retainer (80, 82, 83, 84, 85, 86)	2	29	06403900	Wshr-FI-Stl .630 x 1.005 x .062 PI	5
4	05417700	Brg-Ball 1.45 x 2.19 x .63 (80, 82, 83, 84, 85, 86)	2	30	02436700	Pinion Shaft	1
	05503900	Bshg-Fig .750 x 1.000 x .625 x 1.250 (81)	2	31	02458000	Roller Chain #41 38 Pitches (80, 82, 83, 84, 85, 86)	1
5	06403300	Wshr-FI-Stl .755 x 1.375 x .125 (81)	2	32	01313600	Hydraulic Drive Fitting	1
	06417000	Wshr-FI-Stl 1.406 x 1.718 x .134 (80, 82, 83, 84, 85, 86)	2	33	05802900	Pin Roll .156 x 1.00	2
				34	02437100	RH Axle (83, 84, 85, 86)	1
6	07001100	Scr-Sltr-Sernk .25-20 x .62 PI (81)	8	35	02440900	Rh Axle (80,82)	1
	07005800	Blt-Sernk SI .25-20 x .50 PI (80, 82, 83, 84, 85, 86)	8	36	05800900	Pin-Roll .125 x 1.00	1
				37	05502600	Bshg-Fig .625 x .750 x .500 x .875 Br	2
7	06505600	Nut-Lk-Fig .250-20 PI	8		52403200	Pinion & Sprocket Assembly (80, 82, 83, 84, 85, 86)	1
8	02404500	Hex Shaft (80, 82, 83, 84, 85, 86)	1		50200200	Sprocket Service Assembly (81)	1
	02433800	Hex Shaft (81)	1	38	05505700	Bshg-Slv .750 x .814 x 1.000 Br	1
9	06601500	Key-Wdrf .125 x .625 x .250 SAE S	1	39	06302500	Wshr-Lock .250 x .047	1
10	01027600	9 Tooth Sprocket	1	40	52405400	LH Axle Assembly (83, 84, 85, 86)	1
11	02457900	Roller Chain #41 22 Pitches (80, 82, 83, 84, 85, 86)	1		52405500	LH Axle Assembly (80, 82)	1
	01207800	Chain (81)	1	41	05502900	Bshg-Slv .562 x .625 x .625 Br	1
12	02508900	Roller (81)	1	42	05940900	Scr-Cap .25-20 x 2.0 Gr 8 Hh PI (80, 82, 83, 84, 85, 86)	1
13	06405800	Wshr-FI-Stl .505 x 1.000 x .062 (81)	1	42a	06525700	Nut-Jam-Nyl .250-20 W/Insr	1
				43	05803000	Pin-Roll .188 x 1.50 (80, 82, 83, 84, 85, 86)	1
14	06400300	Wshr-FI-Stl .531 x 1.062 x .095 PI	2	44	02461300	Axle Shaft (81)	1
15	00308500	Bearing Flange	1	45	06601200	Key-Wdrf .25 x .75 x 5 SAE19	1
16	05407900	Brg-Ball .500 x 1.375 x .437	1	46	06403300	Wshr-FI-Stl .755 x 1.375 x .125 (81)	1
17	02414100	Bearing Flange	1	47	05800300	Pin Roll .188 x 1.25 (81)	2
18	06509400	Nut-Lk Dual Face 10-24 PI	4	48	05240530	Differential Assembly (80, 82, 83, 84, 85, 86)	1
19	06505400	Nut-Lk-Ctr .50-20 PI	1	49	01037400	Pin (80, 82, 83, 84, 85, 86)	1
20	06501800	Nut-Hex .375-16 (80, 82, 83, 84, 85, 86)	2	50	08300700	Sg-Comp .028 x .34 x 1.062 Wld 75 (80, 82, 83, 84, 85,86)	1
21	06301400	Wshr-Lock .375 x .130 (80, 82, 83, 84, 85, 86)	2	51	01037200	Lockout Hub (80, 82, 83, 84, 85)	1
22	07405200	Scr-Tap .25-20 x .50 Hx SI Hd PI	2	52	01037500	Knob (80, 82, 83, 84, 85)	1
23	02436600	Shaft Support (80, 82, 83, 84, 85, 86)	1	53	05803200	Pin-Roll .093 x 1.00 (80, 82, 83, 84, 85)	1
	02433900	Clutch Stop (81)	1	54	52405900	Lockout Hub Assembly (80, 82, 83, 84, 85)	1
24	05504000	Bshg-Slv .500 x .625 x .500 Br (80, 82, 83, 84, 85, 86)	2				
25	52405200	Sprocket Assembly (80, 82, 83, 84, 85, 86)	1				

Friction Wheel Drive

Models 924080,81,82,83,84,85,86



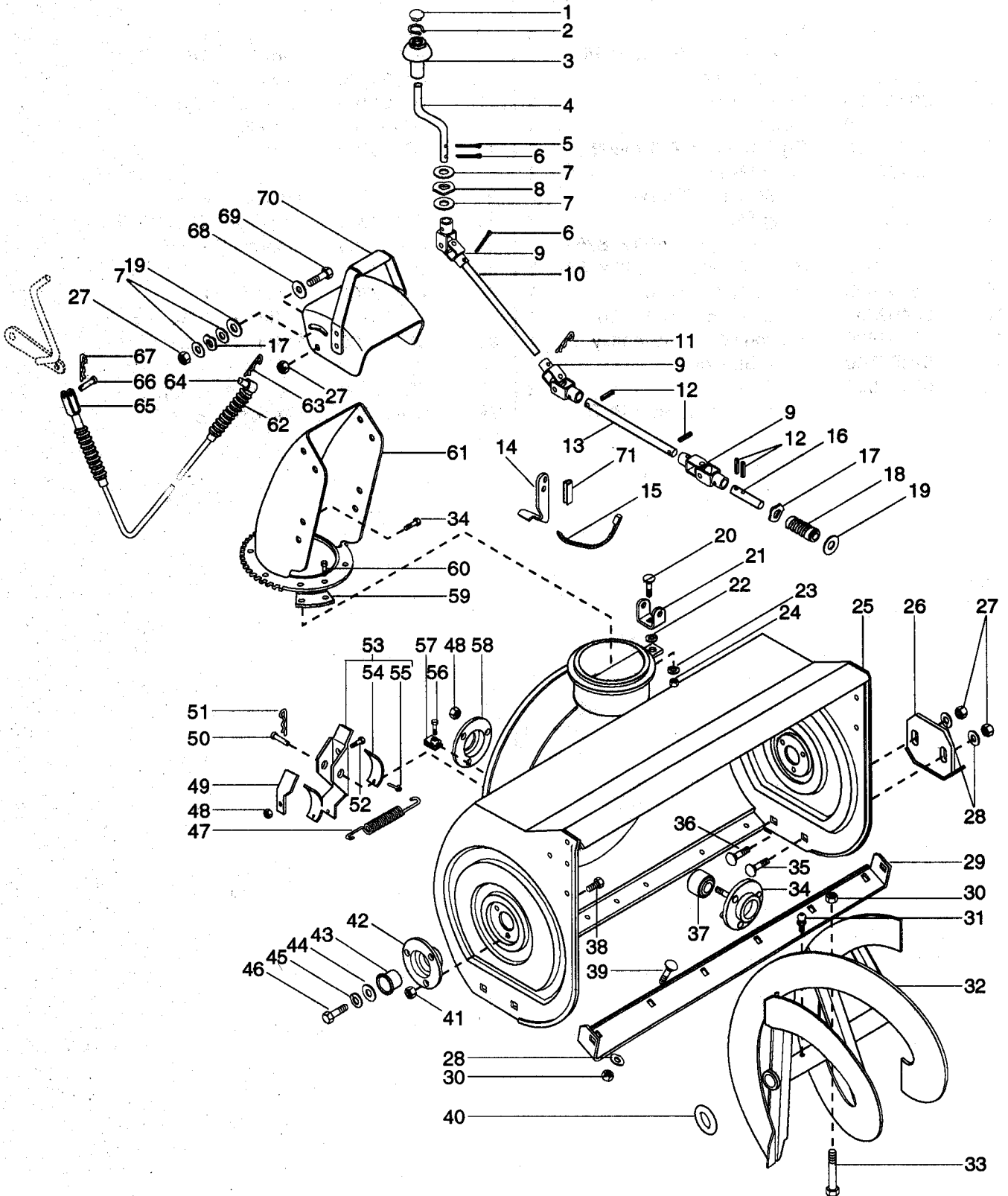
Friction Wheel Drive

Models 924080, 81, 82, 83, 84, 85, 86,

ITEM NO.	PART NO.	DESCRIPTION	QTY	ITEM NO.	PART NO.	DESCRIPTION	QTY
1	07401400	Scr-Tap .312-18 x .50 Hwh PI PI	8	14	02408100	Carrier Shaft	1
2	02445500	Spindle Hub	1	15	05802900	Pin-Roll .156 x 1.00	2
3	00300300	Friction Disc	1	16	01054600	Drive Plate	1
4	02445400	Disc Hub	1	17	02407100	Drive Disc Spacer	1
5	05702100	Rg-Rtng-Int 1.750 x .062	1	18	02407600	Spindle	1
6	06407100	Wshr-FI-Stl .880 x 1.250 x .062	1	19	06600600	Key-Wdrf .125 x .50 x .203 SAE 3	1
7	05502600	Bshg-Flg .625 x .750 x .500 x .875 Br	2	20	02458200	Housing Mount	1
8	05512600	Bshg-Slv .882 x 1.250 x .531	1	21	05403900	Brg-Ball .625 x 1.375 x .44	2
9	06508600	Nut-Lk Nyl .875-14	1	22	02415500	Bearing Spacer	1
10	05409300	Brg-Ball .75 x .880 x .50	1	23	00303400	Roller	1
11	52404600	Friction Wheel Assembly	1	24	06412300	Wshr-FI-Stl .344 x .688 x .065 PI	1
12	02407700	Shaft Support	1	25	06300300	Wshr-Lock .312 ID Heavy PI	1
13	07401500	Scr-Tap .250-20 x .37 Hwh PI Tr	2	26	05900300	Blt-Hex .31-18 x 1.00 PI Gr 2	1
				27	02458100	Spindle Housing	1
				28	02444500	Carrier	1

Auger/Impeller

Models 924080,81,82,83,84,85,86



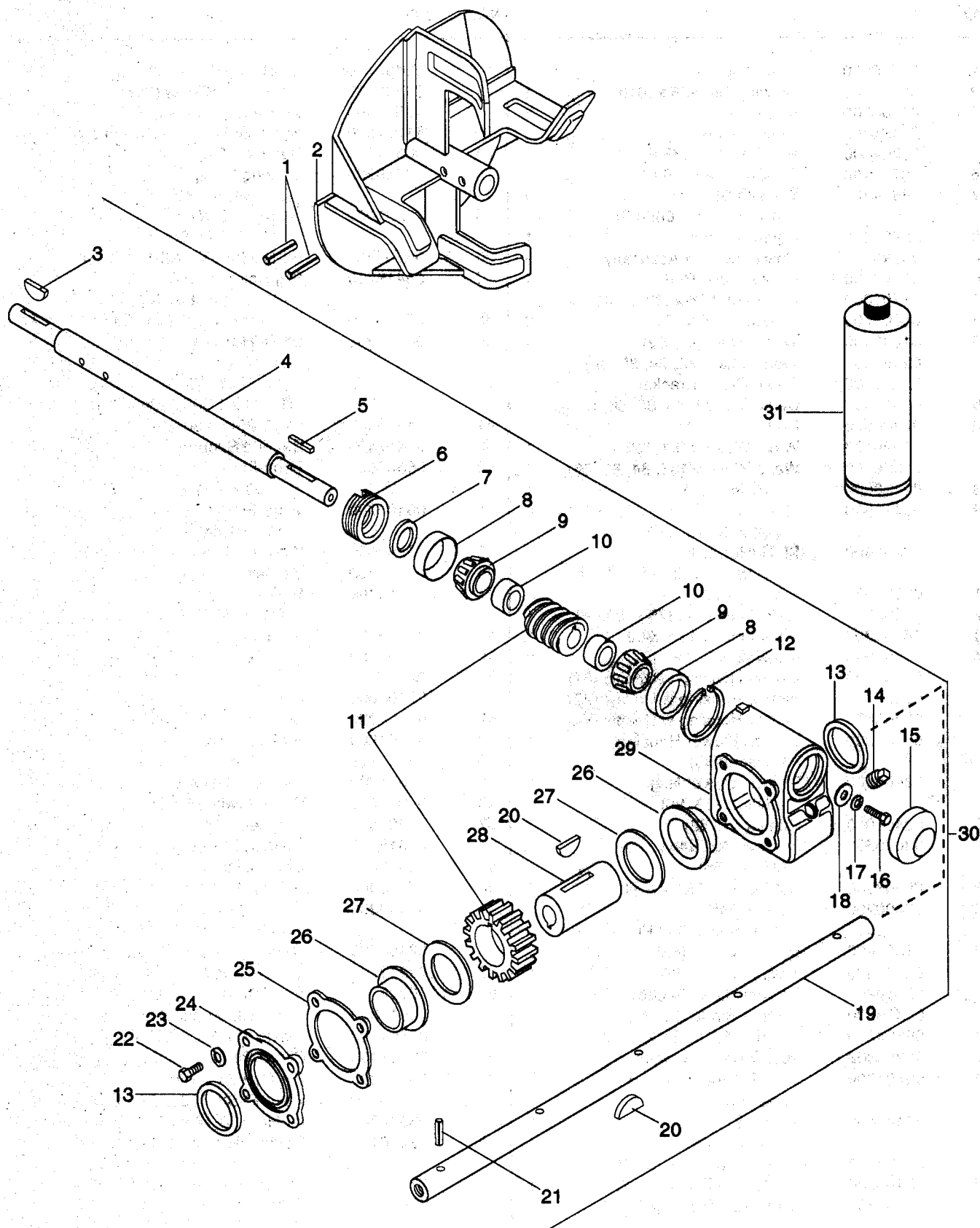
Auger and Impeller

Models 924080, 81, 82, 83, 84,85, 86

ITEM NO.	PART NO.	DESCRIPTION	QTY	ITEM NO.	PART NO.	DESCRIPTION	QTY
1	07516700	Hole Plug	1		52406400	LH Rake w/Zerks (83,86)	1
2	05711300	Rg-rtng-Ext .875 x .010	1		53503400	RH Rake w/Zerks (85)	1
3	07508300	Knob	1		53503500	LH Rake w/Zerks (85)	1
4	02464400	Chute Crank	1	33	51001500	Shear Bolt Service Assembly	2
5	06702400	Pin-Cotr .12 x .75 PI	1	34	00301700	Bearing Flange (81, 82)	1
6	06700400	Pin-Cotr .12 x .75 PI	3		03086200	Bearing Flange (83, 84, 85, 86)	1
7	06404300	Wshr-FI-Stl .406 x .812 x .0650 PI	4	35	06201000	Blt-RdHdSqNk .38-16 x .75 Sht PI	5
8	02902400	Spring Washer	1		06201300	Blt-RdHdSqNk .38-16 x 1.00	2
9	05240500	Universal Joint Assembly	3	36	05418200	Brg-Ball 1.0 x 2.0 x .56 (83, 84, 85, 86)	1
10	02464100	Chute Crank Rod	1	37		Blt-Sernk Sl .25-20 x .50 PI	6
11	06701000	Pin-Hair Int.08 x .38 x 1.42	1	38	07005800	Blt-RdHdSqNk .312-18 x .62 Sht PI	5
12	05803400	Pin-Roll .125 x .75	3	39	06203300	Wshr-FI-Stl 1.010 x 1.505 x .062 PI	2
13	01049400	Worm Shaft (81, 82)	1	40	06404600	Nut-Lk-Flg .250-20 PI	6
	02451400	Worm Shaft (83, 84, 85, 86)	1	41	06505600	Bearing Support	2
14	02443400	Chute Crank Bracket	1	42	02437400	Bshg-Flg 1.000 x 1.12 x .62 x 1.50 Br	2
15	06917000	Cable Tie (83, 84, 85, 86,)	1	43	05503500	Wshr-FI-Stl .511 x 1.441 x .125 PI	2
16	02434600	Rod	1	44	06404700	Wshr-Lock .500 x 1.51 Hvy PI	2
17	01026000	Wave Washer (81, 82)	1	45	06300600	Blt-Hex .50 - 13x 1.00 PI Gr 2	2
	01320200	Wave Washer (83, 84, 85, 86)	1	46	05902400	Sq-Tens .062 x .56 x 8.0 Wld II	1
18	02450000	Worm Gear LH	1	47	08316400	Nut-Lk-Ctr .250-20 PI	4
19	06416800	Wshr-Plastic .390 x .875 x .062	3	48	06504000	Arm Extension (82)	1
20	06203400	Blt-RdHdSqNk .31-18 x .75 Sht PI	1	49	02440500	Clevis Pin	1
21	02212300	Worm Clevis	1	50	02448100	Pin-Cotr .062 x .75 PI	1
22	06303500	Wshr-Lock Ext .375 x .035 PI	1	51	06703900	Blt-Hex .25-20 x .63 PI Gr 2	1
23	06302300	Wshr-Lock .313 x .062	1	52	05908000	Brake Arm Assembly	1
24	06501500	Nut-Hex .312-18	3	53	52404800	Brake Lining	1
25	52403600	Blower Housing w/Decals (81)	1	54	02217800	Rvt-Tblr .187 x .437 Rh St PI	2
	52403700	Blower Housing w/Decals (82)	1	55	06806700	Blt-Schrfwh .38-16 x .75 PI	2
	52403800	Blower Housing w/Decals (84)	1	56	07003100	Nut-Retrn .38-16 Tinman	2
	52404300	36 Inch Blower Housing w/Decal (85)	1	57	07002600	Bearing Flange (81, 82)	1
	52406500	28 Inch Blower Hsg w/Decal (83, 86)	1	58	01014200	Chute Clamp	4
26	02459900	Runner (81,82)	2	59	02459000	Scr-tap 10-24 x .484 Hwh Tr	8
	03075500	Runner-Skid Shoe (83, 84, 85)	2	60	07406900	Discharge Chute- 36 In (83, 84, 85, 86)	1
27	06503900	Nut-Lk .375-16 Gr A PI	6	61	02449900	Discharge Chute (81,82)	1
28	06400200	Wshr-FI-Stl .38 x .875 x .083 PI	21	62	06919700	Control Cable (83,84, 85, 86)	1
29	01016400	Scraper Blade (82)	1	63	06700100	Pin-Cotr .09 x .75 PI	1
	02437300	Scraper Blade (84)	1	64	06917500	Pivot (83, 84, 85, 86)	1
	02459200	Scraper Blade (83,86)	1	65	02401200	Clevis (83, 84, 85, 86)	1
	03519200	Scraper Blade (85)	1	66	02401400	Clevis Pin (83, 84, 85, 86)	1
30	06504200	Nut-Lk .312-18 Gr A PI	13	67	06700300	Pin-Cotr .06 x .50	1
31	02209300	Spin Drive Zerk Fitting	4	68	06410400	Wshr-FI-Stl .520 x .810 x .033	1
32	52401300	32 In RH Rake Service Assembl (84)	1	69	05902300	Blt-Hex .38-16 x .75 PI Gr 2	2
	52401400	32 In LH Rake Service Assembl (84)	1	70	52406100	Chute Deflector w/Decal (81, 82)	1
	52403900	RH Rake w/Zerks (81,82)	1		53114400	Deflector w/Decal (83, 84, 85)	1
	52404000	LH Rake w/Zerks (81, 82)	1	71	02401700	Trim	1
	52406300	RH Rake w/Zerks (83, 86)	1				

Gear Case Cast Iron

Models 924080,81,82,83,84,85,86



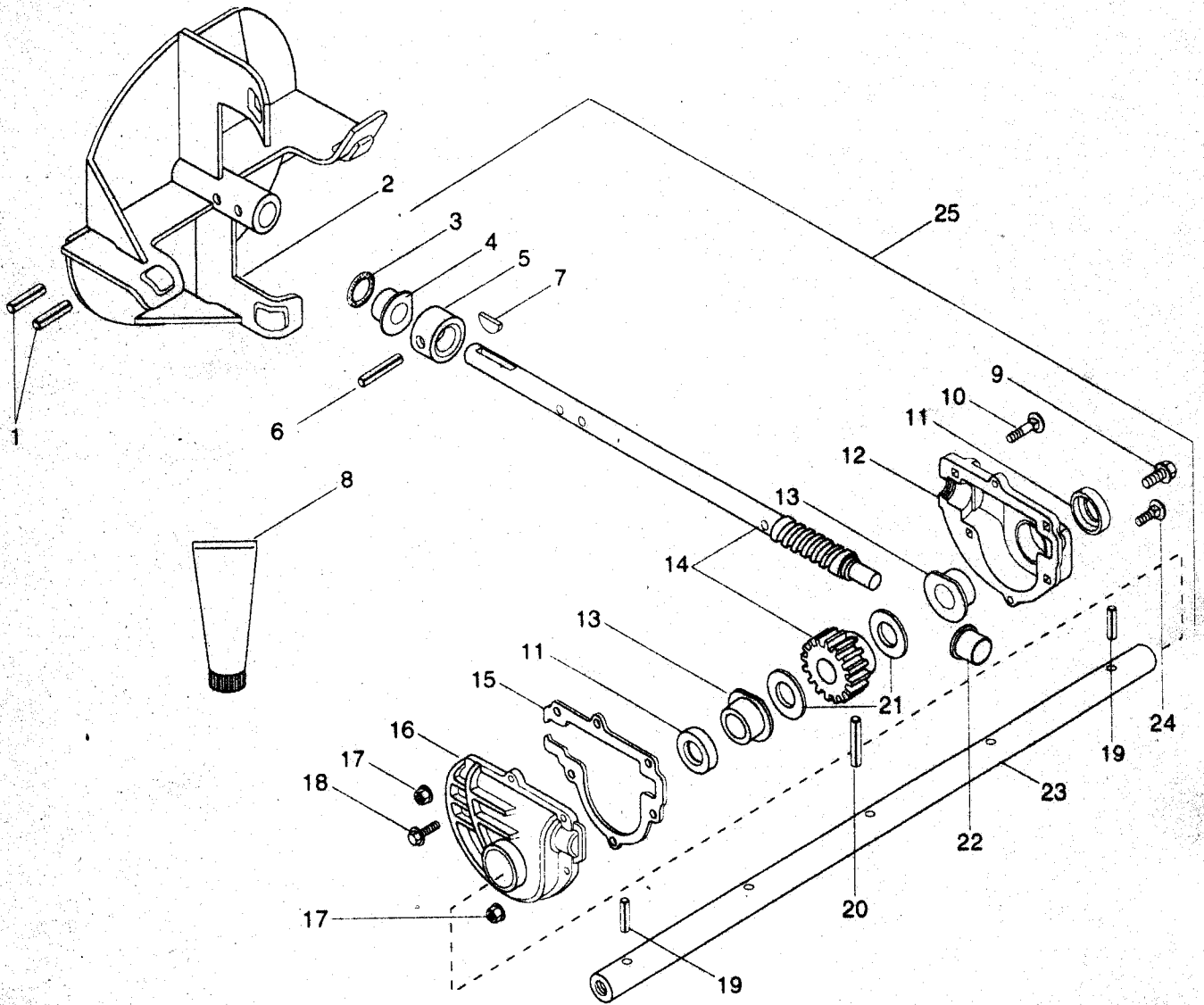
Gear Case Cast Iron

Models 924080, 81, 82, 83, 84,85, 86

ITEM NO.	PART NO.	DESCRIPTION	QTY	ITEM NO.	PART NO.	DESCRIPTION	QTY
1	05801500	Pin-Roll .313 x 1.75	2	19	02406500	Rake Shaft (84)	1
2	02437600	Fan	1		02459600	Rake Shaft (83)	1
3	06600100	Key-WDRF .188 x .875 x .38	1		03519500	Rake Shaft (85)	1
4	02437500	Worm Shaft	1	20	06600800	Key-WDRF	1
5	06601300	Key-Sq .188 x 1.0 x .188 Sae 8630	1			.25 x .875 x .375 Sae A	
6	02401500	Adjustment Plug	1	21	05803000	Pin-Roll .188 x 1.50	2
7	05606100	Seal 1.000 x 1.312 x .150	1	22	05900100	Blt-Hex .25-20 x .75 PI Gr 2	4
8	05404400	Brg-Cup 1.781 x .475	2	23	06301700	Wshr-Lock Ext .250 ID	4
9	05404500	Brg-Cone .750 x .61	2	24	02401300	Gear Case Cover	1
10	00200500	Bearing Spacer	2	25	00200800	Gasket	1
11	52400900	Worm & Gear Service Assembly	1	26	05505900	Bshg-Flg 1.615 x 1.87 x 1.68 x 2.250	2
12	05707500	Rg-Rtng-Int 1.781 x .062	1	27	06408700	Wshr-FI-Stl 1.625 x 2.500 x .012	2
13	05607000	Seal 1.625 x 2.125 x .250	2	28	02406400	Gear Case Shaft	1
14	00113800	Pipe Plug	1	29	02400200	Gear Case	1
15	00403700	Dust Cap	1	30	52403500	32 In Blower Gear Case Assembl	1
16	05902200	Blt-Hex .31-18 x .75 PI Gr 2	1				
17	06300300	Wshr-Lock .312 ID Heavy PI	1	31	00008000	Ariens L-2 16 Oz Lube	5
18	06408200	Wshr-FI-Stl .328 x 1.0 x .094	1				

Gear Case Aluminum

Models 924080,81,82



Gear Case Aluminum

Models 924080, 81, 82,

ITEM NO.	PART NO.	DESCRIPTION	QTY	ITEM NO.	PART NO.	DESCRIPTION	QTY
1	05803700	Pin-Roll .250 x 1.75	2	13	05512200	Bshg-Flg 1.000 x 1.12 x .62 x 1.50 Br	2
2	02423700	Fan	1	14	52402600	Worm Shaft & Gear Assy	1
3	05604700 (A)	O-Ring .250 x .953 x .103	1	15	03203800 (A)	Gasket	1
	05613100 (B)	Seal-Lip .750 x 1.00 x .156	1		03212900 (B)	Gasket	1
4	05511200	Bshg-Flg .750 x 1.000 x .750 x 1.250	1	16	02438000 (A)	Gear Case Half RH	1
5	03210300	Thrust collar	1		02465500 (B)	R.H. Gear Case Half	1
6	05804500	Pin-Grv .188 x 1.25 Tp A	1	17	06505600	Nut-Lk-Flg .250-20 PI	4
7	06600100	Key-WDRF .188 x .875 x .38	1	18	07402700	Scr-Tap 10-24 x .75 Hwh PI Tr	2
8	00007200 (A)	8 Oz Tube of Liquid Grease	4	19	05803000	Pin-Roll .188 x 1.50	2
	00008000 (C)	Ariens L-2 16 Oz Lube	3 oz.	20	05806900	Pin-Grv .313 x 1.44 Tp C	1
9	07401600	Scr-Tap .375-16 x .50 Hwh PI Tr	1	21	06416600	Wshr-FI-Stl 1.007 x 1.542 x .062	2
10	06200100	Blt-RdHdSqNk .25-20 x 1.25 Gr 5 PI	2	22	05511100	Bshg-Flg .500 x .750 x .750 x 1.000	1
11	05606100	Seal 1.000 x 1.312 x .150	2	23	02438300	Rake Shaft	1
12	02437900 (A)	Gear Case Half LH	1	24	06205400	Blt-RdHdSqNk .25-20 x .88 PI	2
	02465400 (B)	LH Gear Case Half	1	25	52407300	24" Gear Case Assy.	1

(A) Model 924082 S/N <000652

(B) Model 924081 S/N 000101>
Model 924082 S/N 000653>

(C) Model 924082 S/N 003750>

Service Parts 12V and Without Engine

Models 924087,088,089,090

These models are identical to other models except for parts listed below as noted.

Model to Service

924089 ST824
 924088 ST1028
 924087 ST1232 (Except Belts
 See (924085)
 924090 ST0036

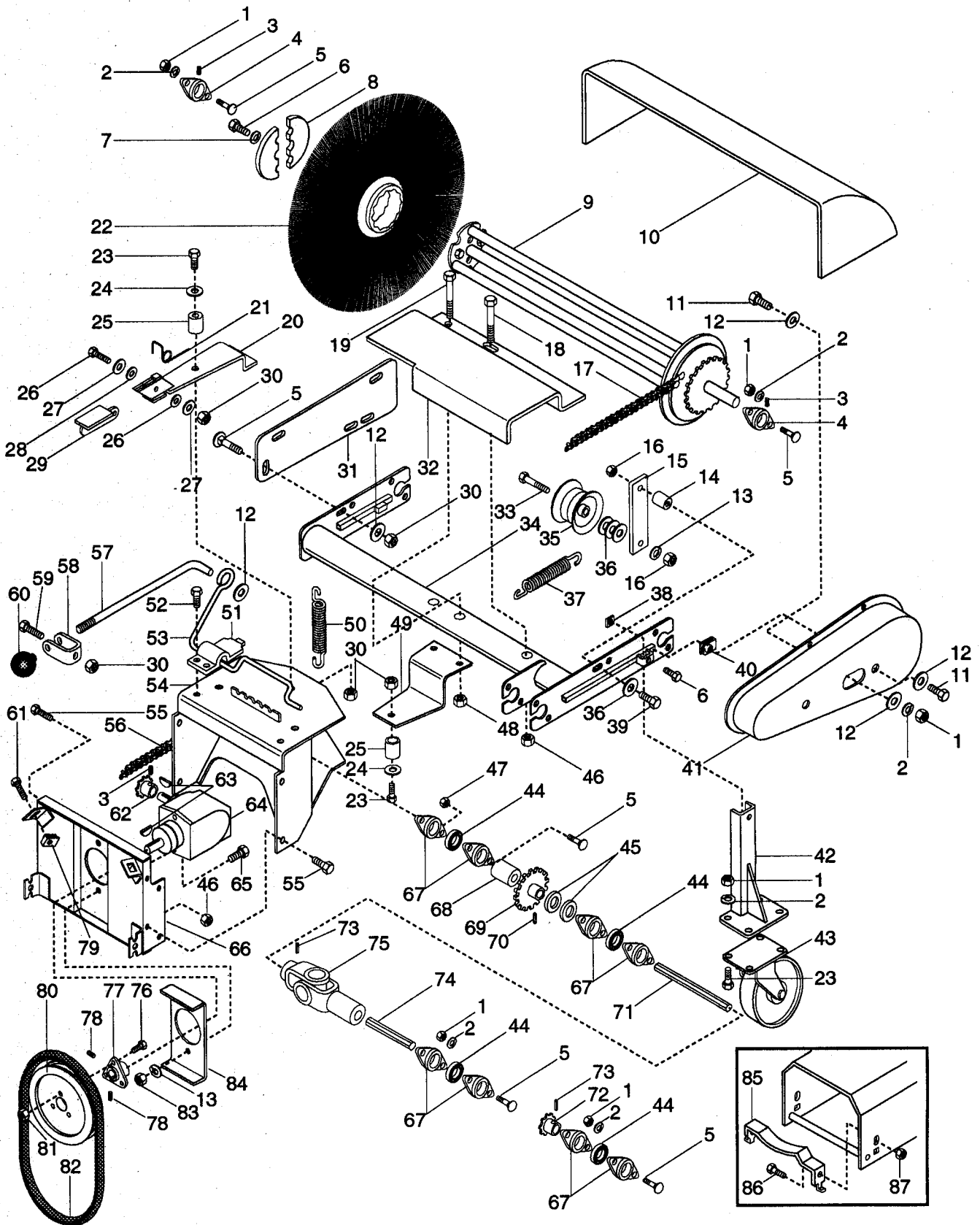
Use Model Parts

924082 ST824
 924086 ST1028
 924084 ST1032
 924085 ST1236

1	02403200	ST Battery Tray 24 (89)	1
	02403100	ST Battery Tray 28 (87,88,90)	1
2	05900100	Blt-Hex .25-20 x .75 Pl Gr 2	4
3	06505600	Nut-Lk-Flg .250-20 Pl	4
4	03055700	Battery	1
5	02403000	ST 12V Harness	1
6	03551000	Solenoid	1
7	09032300	Cvr, Battery	1
8	06218700	Blt-Rdhdsqnk .25-20 x 7.00	2
9	06501200	Nut-Wing .250-20 Pl	2
10	06422000	Wshr-FI-Stl .260 x .500 x .060 Pl	2
11	52707300	Switch Assembly	1
12	08233200	8 HP Engine (924089) Tecumseh HMSK80-155494R	1
	08233300	10 HP Engine (924088) Tecumseh HMSK100-159259S	1
	08233400	12 HP Engine (924087) Tecumseh OHSK120-222018C Engine (924090) As Vendor Installed	1 1

Brush

Model 824004



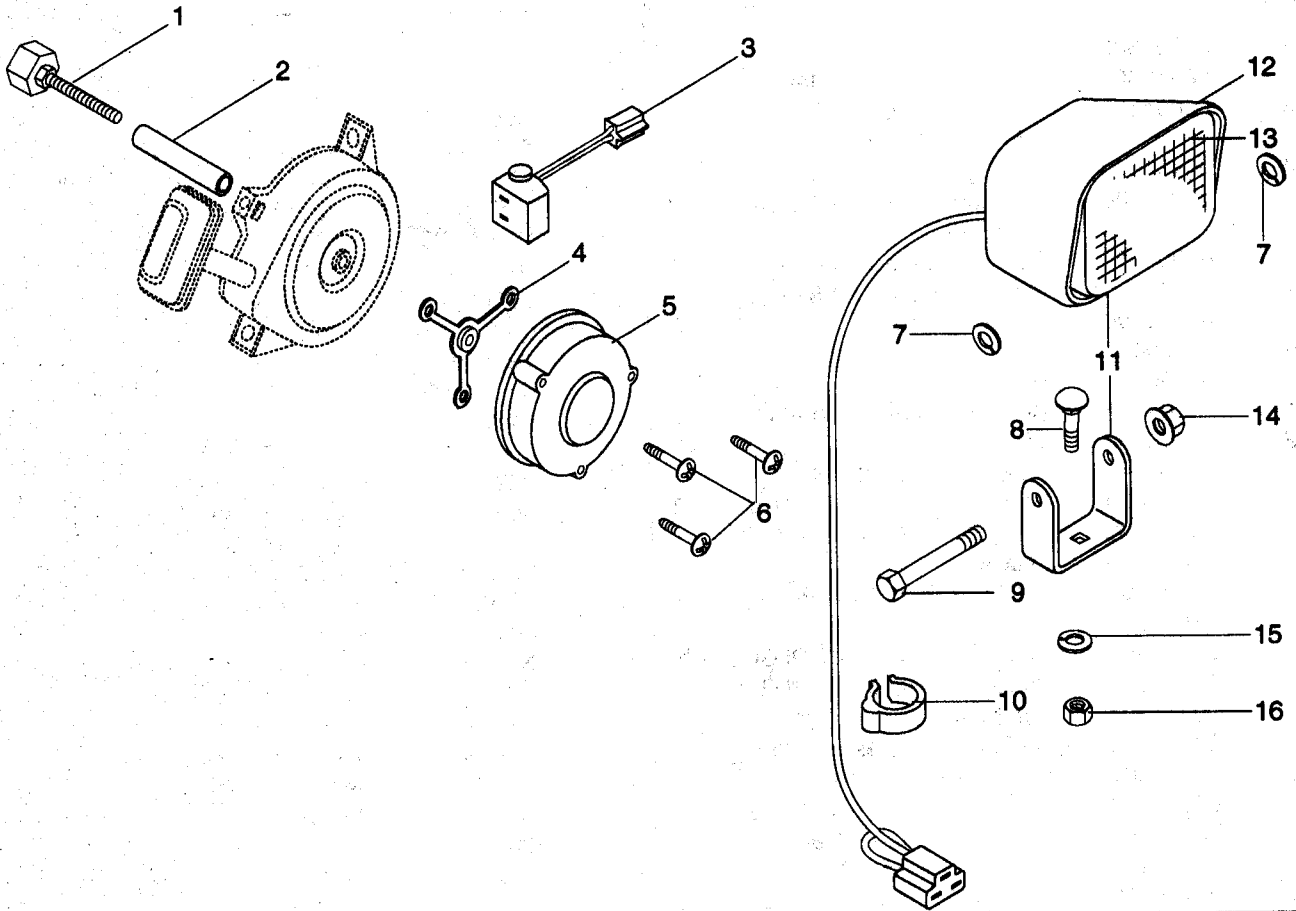
Brush

Model 824004

ITEM NO.	PART NO.	DESCRIPTION	QTY	ITEM NO.	PART NO.	DESCRIPTION	QTY
1	06501500	Nut-Hex .312-18	21	45	06418500	Wshr-FI-Stl	2
2	06300300	Wshr-Lock .312 ID Heavy PI	21			1.015 x 1.500 x .125	
3	06001100	Scr-Set .25-20 x .38	4	46	06505900	Nut-Lk-Flg .375-16 Gr A PI	5
		SkHc UpNI Oh		47	06512400	Nut-Lk-Top .312-180Gr C PI	2
4	05409600	Brg-Flg	2	48	06512200	Nut-Lk Top .375-16 Gr C PI	2
5	06201100	Blt-RdHdSqNk .31-18 x .75	12	49	02429200	Bottom Mount	1
		Gr 5 PI		50	08300300	Sg-Tors .109 x .88 x 2.25	1
6	05902400	Blt-Hex .50-13 x 1.00 PI Gr 2	4	51	02535300	Clamp	2
7	06300600	Wshr-Lock .500 x 1.51 Hvy PI	2	52	07002700	Blt-Serhfw h .31-18 x .75 PI	2
8	01062900	Retainer Plate	2	53	02428700	Release Rod	1
9	01060400	Core	1	54	02441900	Adaptor frame	1
10	01060100	Hood	1	55	05902300	Blt-Hex .38-16 x .75 PI Gr 2	4
11	05900300	Blt-Hex .31-18 x 1.00 PI Gr 2	7	56	01207800	Chain	1
12	06400200	Wshr-FI-Stl	14	57	00105700	Position Rod	1
		.38 x .875 x .083 PI		58	02206500	Bracket	1
13	06300400	Wshr-Lock .375 x .115 Hvy PI	3	59	06202200	Blt-RdHdSqNk	1
14	05506600	Bshg-Slv .375 x .437 x .312	1			.31-18 x .38 Sht PI	
15	01060200	Idler Arm	1	60	07501500	Shift Ball	1
16	06503900	Nut-Lk .375-16 Gr A PI	2	61	07003100	Blt-Scrhw .38-16 x .75 PI	2
17	01060800	Chain	1	62	02429800	Sprocket	1
18	05904900	Blt-Hex .28-16 x 3.00 PI Gr 2	1	63	06600300	Key-Wdrf .188 x .75 Sae #9	2
19	05920800	Blt-Hex .38-16 x 3.50 PI Gr 5	2	64	02400400	Gear Box Assembly	1
20	02441700	Top Mount	1	65	05900500	Blt-Hex .38-16 x 1.25 PI Gr 2	2
21	08300300	Sg-Tors .109 x .88 x 2.25	1	66	02429400	Mounting Plate	1
22	51002800	Poly Brush Assembly	1	67	02429600	Bearing Flange	8
23	05902200	Blt-Hex .31-18 x .75 PI Gr 2	10	68	02447600	Spacer	1
24	06408200	Wshr-FI-Stl .328 x 1.0 x .094	2	69	01062000	Sprocket	1
25	00607100	Spacing Bushing	2	70	05805600	Pin-Roll .188 x 1.75	1
26	05905700	Blt-Hex .31-18 x 2.00 PI Gr 2	1	71	02429100	Shaft	1
27	06407900	Wshr-FI-Stl	2	72	01060900	Sprocket	1
		.344 x 1.125 x .063 PI		73	05803000	Pin-Roll .188 x 1.50	1
28	06404400	Wshr-FI-Stl .38 x .875 x .179 PI	2	74	02429900	Drive Shaft	1
29	02441800	Latch Bar	1	75	02430600	Universal Joint	1
30	06504200	Nut-Lk .312-18 Gr A PI	6	76	07005300	Blt-Serrdhd SI .31-18 x .75 PI	3
31	01060300	Hood Strap	1	77	50202100	Hub Assembly	1
32	02429300	Shaft Guard	1	78	06001200	Scr-Set .32-18 x .38	2
33	05906800	Blt-Hex .38-16 x 2.00 PI Gr 2	1			Skhcupnl Oh	
34	01060000	Brush Frame	1	79	07002600	Nut-Retr .38-16 Tinman	2
35	01061300	Chain Tightener	1	80	07307000	Ply-V 9.0 x 1.25 3 Blt	1
36	06400800	Wshr-FI Stl .438 x 1.0 x .083	4	81	06507800	Nut-Flg .312 -18 x .38	3
37	08308800	Sg -Ext	1			Skhcupnl Oh	
38	06505200	Nut-Sq .50-13	1	82	07210800	V-Belt	1
39	05900400	Blt-Hex .38-16 x 1.00 PI	1			V-Belt (71)	1
40	06508800	Nut-Speed U-Tv .312-18	1	83	06501800	Nut-Hex .375-16	2
41	01061200	Chain Shield	1	84	02429500	Stiffener Plate	1
42	02447700	Castor Leg	2	85	02423600	Belt Retainer	1
43	07109400	Whl 1.5 In	2	86	05902800	Blt-Hex .25-20 x .50 PI Gr 2	2
44	05409700	Brg-Ball	3	87	06504000	Nut-Lk-Ctr .250-20 PI	2
		.884 Hex x 52mm x 1.07					

Alternator/Headlight

Models 924080,81,82,83,84,85,86,87,88,89,90

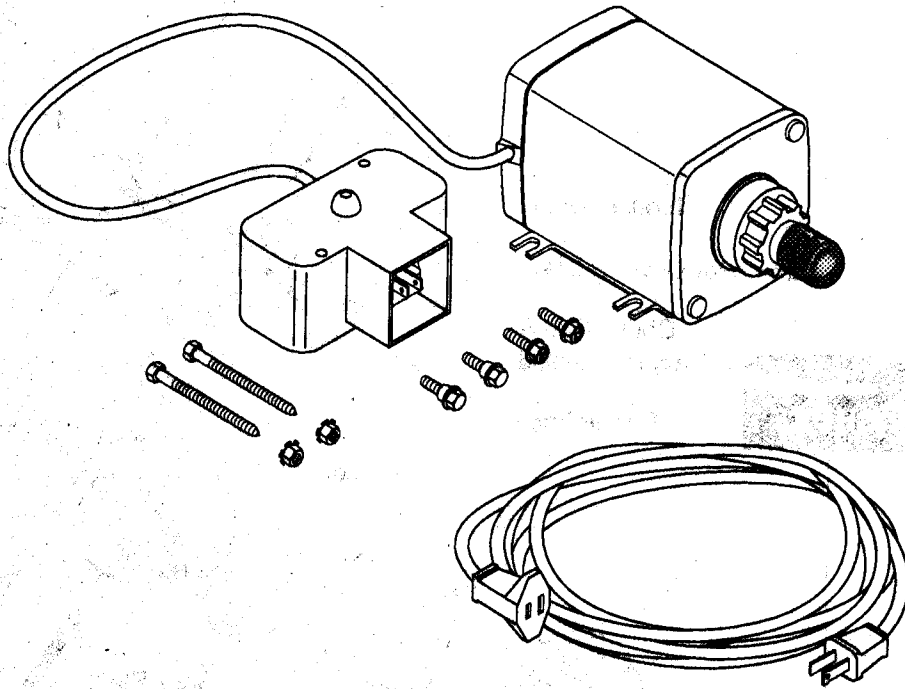


ITEM NO.	PART NO.	DESCRIPTION	QTY	ITEM NO.	PART NO.	DESCRIPTION	QTY
1	02455400 *	Alternator Shaft 3.00 (Tec. 590613)	1	8	06201500 @	Blt-RdHdSqNk 312-18 x 1.00 PI (85, 86, 87, 88, 89, 90)	1
	02457600 *	Alternator Shaft-3.50 (Tec.590636)	1	9	05913100 @	Blt-Hex .31-18 x 2.50 PI Gr 2 (85, 86, 87, 88, 89, 90)	1
2	02455500 *	Centering Tube (Tec. 590610)	1	10	06901200 @	Clamp (85, 86, 87, 88, 89, 90)	2
	02455600 *	Centering Tube (Tec. 590609)	1	11	02463600 @	Headlight (85, 86, 87, 88, 90)	1
3	02455700 *	Lighting Connector (Tec. 61178)	1	12	02464900 @	Lense-Flood (85, 86, 87, 88, 90)	1
4	02459800 *	Spacer-Alternator (85, 86, 87, 88, 89, 90)	1	13	02465000 @	Bulb (85, 86, 87, 88, 89, 90)	1
5	02455800 *	Alternator (Tec. 611077)	1	14	06507800 @	Nut-Flg .312-18 PI (85, 86, 87, 88, 89, 90)	1
6	07408400 @	Scr-Tap 8-18 x 1.25 Crfh PI B	3	15	06300300 @	Wshr-Lock .312 ID Heavy PI (85, 86, 87, 88, 89, 90)	1
7	06303200 @	Wshr-Locl Ext .313 x .030 PI (85, 86, 87, 88, 89, 90)	2	16	06501500 @	Nut-Hex .312-18 (85, 86, 87, 88, 89, 90)	1

* Parts Warrantied by Tecumseh Products
 @ Headlight Standard On 924084,85,86,87,88,89,90

120 Volt Electric Starter

Model 724036 Electric Starter Fits All Models



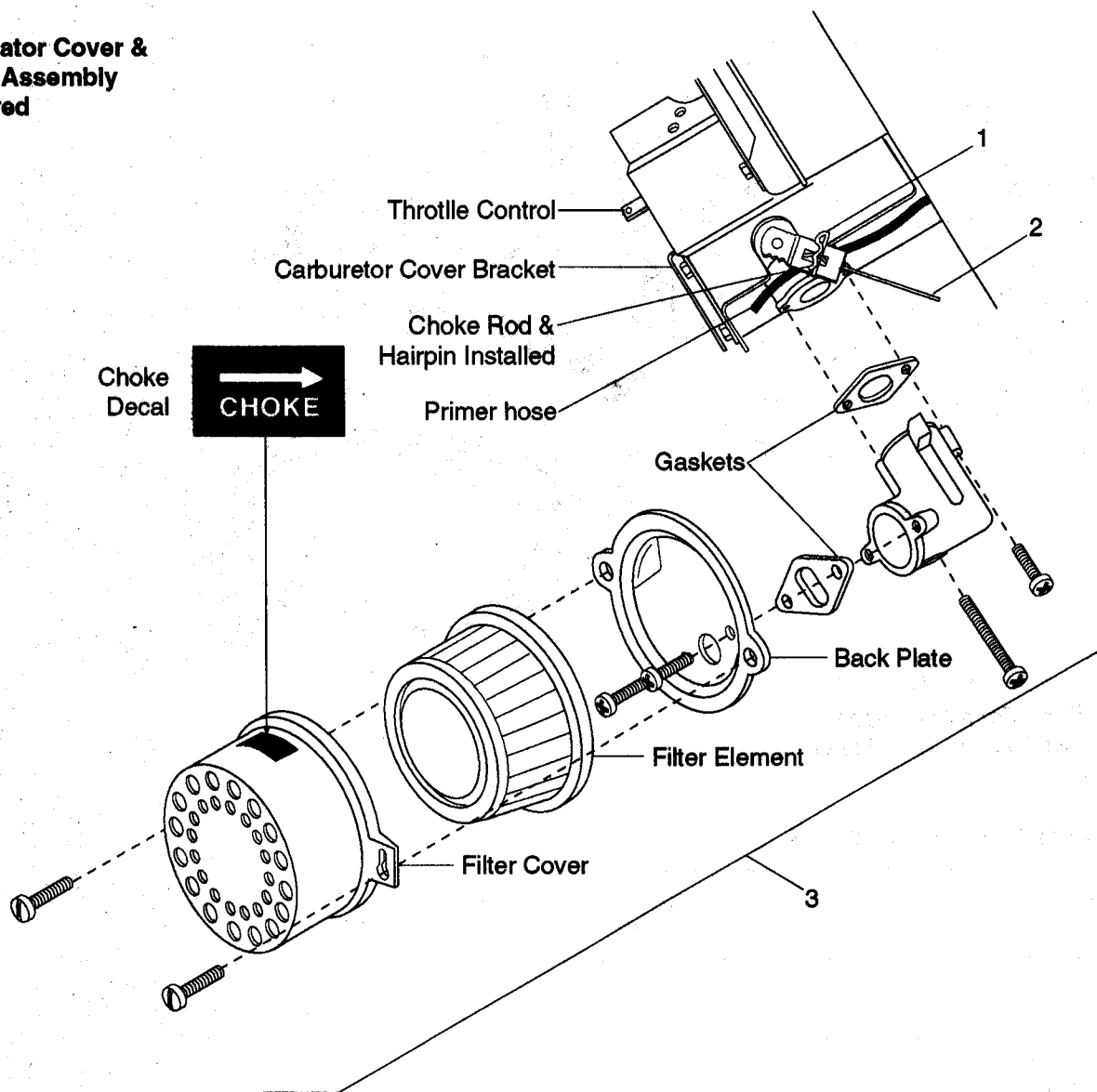
Order Parts From Authorized
Tecumseh Dealer Under Starter
Number.

Model 724036 - Tec. No. 33329B

Tecumseh Air Cleaner

Model 24005 Fits All Models

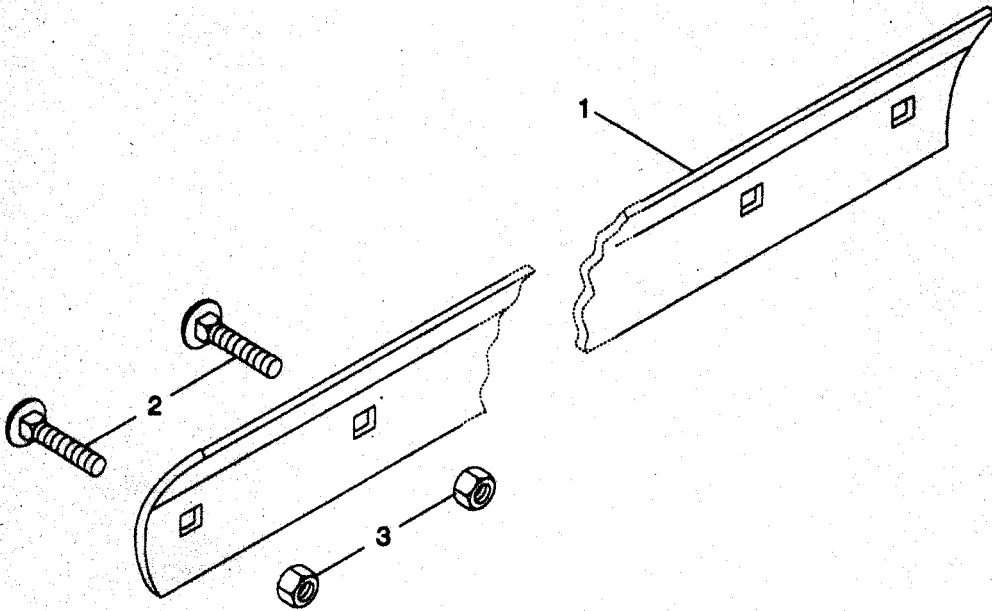
Carburetor Cover &
Choke Assembly
Removed



ITEM NO.	PART NO.	DESCRIPTION	QTY	ITEM NO.	PART NO.	DESCRIPTION	QTY
1	06701900	Pin-Hair Int .06 x .18 x .77	1	3	02400500	Air Cleaner Kit	1
2	02447100	Choke Rod	1				

Slicer Bar

Model 710997 Fits All Models



ITEM NO.	PART NO.	DESCRIPTION	QTY	ITEM NO.	PART NO.	DESCRIPTION	QTY
1	01024200	Cutter Bar	1	3	08504200	Nut-Lk .312-18 Gr A Pl	2
2	06200900	Blt-RdHdSqNk .31-18 x .50	2				