



Product Notice

Ariens Company
655 W. Ryan St.
Brillion, WI 54110
www.ariens.com

Product Family: Ariens and Gravelly Commercial Mowers and Max Zoom

Subject: Digital Hour Meter Reset Procedure

Dealer Action: Read and Understand Reset Procedure

Ariens Company has been monitoring warranty claims on the digital hour meter (part number 03966800) and has inspected many meters to determine the failure mode. We found that more than 60% of returned meters have no defect and simply need to be properly reset.

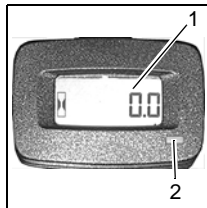
Please follow the instructions below when resetting the hour meter. We will continue to request meters back. If a claim has been paid on the meter and we find no defect, we will reverse payment on the claim.

For further information, contact Ariens Company Technical Service at (920) 756-4688.

HOUR METER

Measures and displays (1) the amount of time engine has been run, time spent on jobs and service intervals. This time cannot be cleared.

Operation



Press and release the toggle button (2) to shift between different functions.
Press and hold the toggle button to reset the timer or clear a service message.

The hour meter has three functions:

1. Timer (TMR1)

Measures the time spent on individual jobs.

Press and hold the toggle button to reset the timer to zero. TMR1 will then start measuring engine run time until it is reset to zero again.

2. Service Alert

Displays maintenance interval reminders for:

- changing engine oil (CHG OIL)
- changing the hydraulic oil and filter (CHG HYD OIL)
- servicing the air filter (SRV AIRFILTER)

The alert starts counting down two hours before the maintenance is due. The meter flashes NOW when it reaches the maintenance time.

Press and hold the toggle button to reset the maintenance clock to zero after performing the service.

3. Service Interval Presets

Hour meter is preset for recommended service intervals.

- Hydraulic oil and filter: First 75 hours, every 400 hours thereafter.
- Engine oil and filter: First 25 hours, every 100 hours thereafter

NOTICE: The preset engine oil service intervals in the hour meter are normal recommended intervals. Specific engine manufacturer's recommendations may vary.