

SERVICE**BULLETIN**

SB #: BnS-2088
DATE: JANUARY 2012
TO: ALL ARIENS SINGLE-STAGE SNOWTHROWER SERVICING DEALERS
SUBJECT: REPLACEMENT OF IDLER ARM SPACER & PREMATURE WEAR OF SCRAPER BAR & FLIGHTING IN SINGLE-STAGE SNOWTHROWERS
MODELS: SEE BELOW

Model Affected:	Model Description:	Serial No. Range:	Issue:	Kit Required:
9380220	Single-Stage Snow, 8T, 22", Ariens	000108-001575	Misalignment of belt drive	1687574YP (Ariens 20200183)
			Premature scraper bar wear	1687628YP (Ariens 20200210)

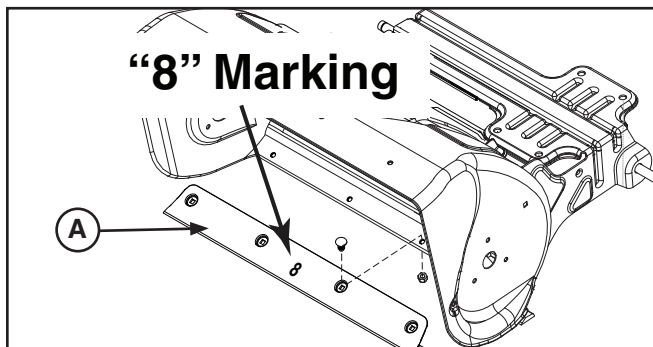


Figure 1. Scrapper Bar
A. Improved Scrapper Bar

CONDITIONS:

The model number and serial number range listed above is affected by the following conditions:

- The original scraper bar material may wear prematurely. An improved scraper bar kit P/N 20200210 is available.

NOTE: The improved scraper bar can be identified by the "8" marking as shown in Figure 1.

- Variations in idler arm spacer thickness (A, Figure 2) along with variation in the torque of nylock nut (D) may cause misalignment of the belt and pulleys resulting in belt failure.
- The tapite screws securing the auger bearing retainers may be loose.

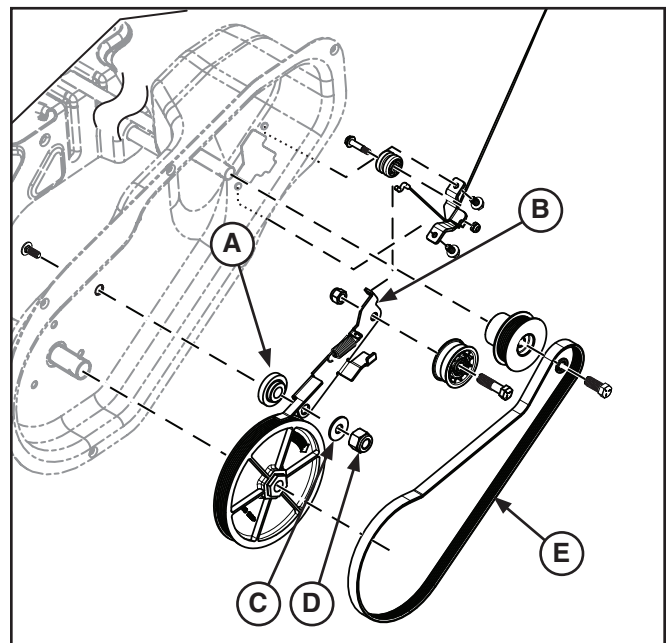


Figure 2. Spacer and Nut

- A. Spacer**
- B. Idler Arm**
- C. Washer**
- D. Locknut**
- E. Belt**

INSPECTION / REPAIR ACTIONS:

All units within the affected serial number range are considered suspect.

For units still in inventory that have not been run, repair the unit using belt and spacer kit 20200183 and replacement scraper bar kit 20200210. The extra drive belt in kit 20200183 may be placed in service parts inventory.

For units that have been put into service and experienced failure of the belt or scraper bar, repair the unit by ordering and installing the 20200183 kit and replacement scraper bar kit 20200183. All parts contained in the kit will be consumed.

WARRANTY:

Brand	Ariens	
Condition Cause Code/Mode	SP	Repair Parts Used 20200183, Belt and Spacer Kit 20200210, Scraper Bar
Pick-Up & Delivery	N/A	
Total Hours (Tenths)	0.5 Hours	

Installation Instructions

Flighting, Scraper Bar & Support Kit

Mfg. No. 1687628

Ariens p/n 20200210

For Single Stage Snowthrowers

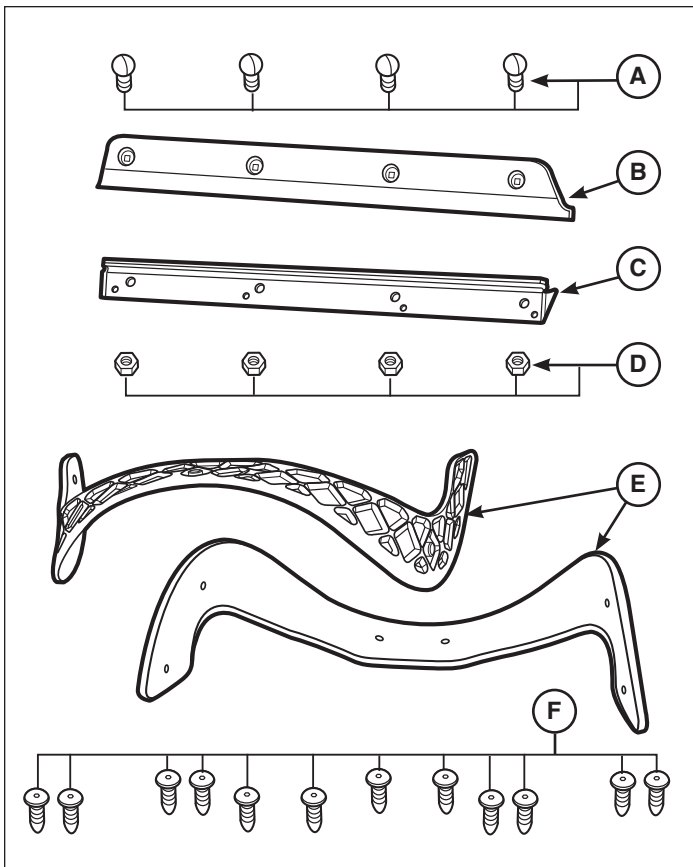


Figure 1

Kit Contents:

Ref	Qty.	Description
A	4	SCREW, Allen Head, 1/4"-20 x .625"
B	1	SCRAPER Bar
C	1	SCRAPER Support
D	4	LOCKNUT, 1/4"-20
E	2	AUGER, Flight
F	12	TORX SCREW, 1/4C" x 5/8"

Note: Double letters refer to existing parts / hardware.

Removal of Existing Augers and Blade

! WARNING

Before beginning any service work turn off the ignition, and disconnect the spark plug wire(s).

1. Remove the two taptite screws (**AA**, Figure 2) securing each of the existing augers (**AB**) to the top and bottom auger center plates (**AC**). Retain the top auger center plate.
2. Remove the four taptite screws (**AA**) securing each of the existing augers (**AB**) to the auger end plates (**AD**).

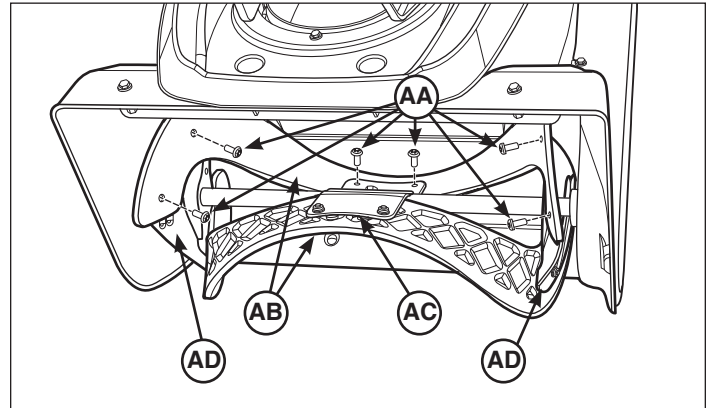


Figure 2

3. Remove the four screws (**AE**, Figure 3) and nuts (**AF**) securing the existing scraper bar (**AG**) to the snow thrower housing (**AH**).

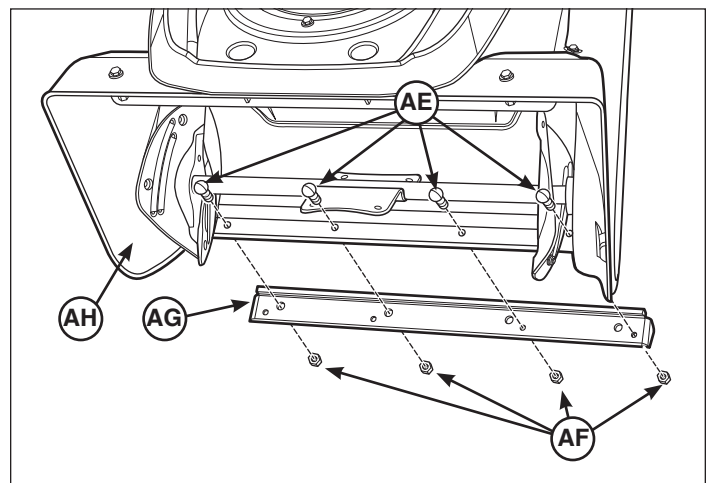


Figure 3

Installation Instructions

Installation

1. Insert four screws (**A**, Figure 4) through the scraper bar (**B**), snow thrower housing and scraper bar support (**C**).
2. Secure four with locknuts (**D**) on outside of snowthrower housing as shown. Torque locknuts to 60-80 in.-lbs. (6-9 Nm).

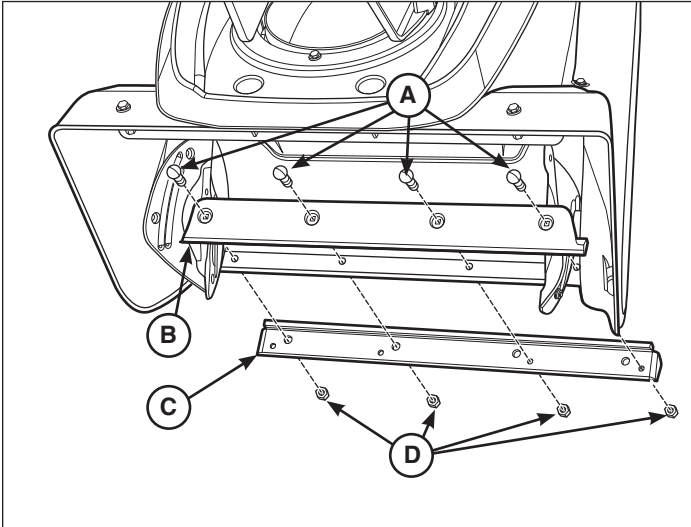


Figure 4

3. Insert two screws (**F**, Figure 5) through top side of each auger (**E**) and secure to top and bottom auger center plate (**AF**) as shown.

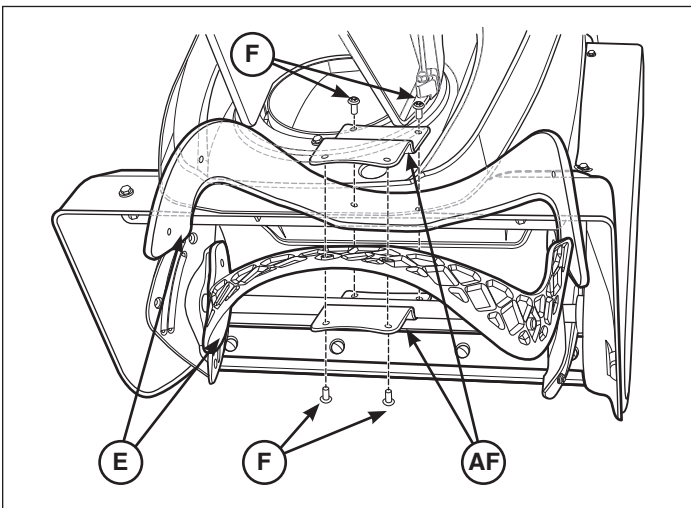


Figure 5

4. Insert two screws (**F**, Figure 6) on each side of both augers (**E**) and secure to auger end plates (**AD**) as shown.

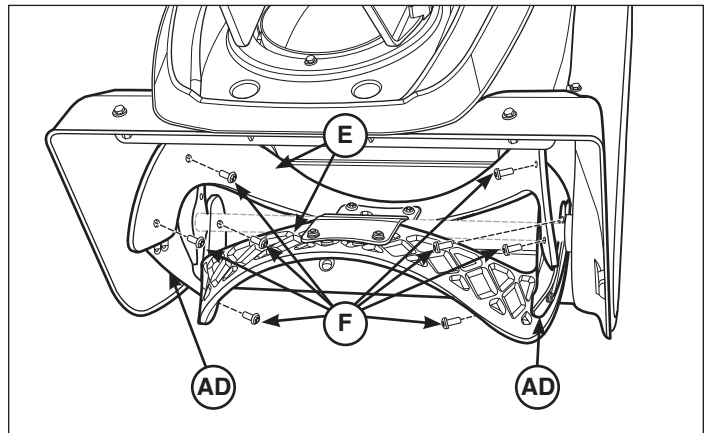


Figure 6

Installation Instructions

Spacer & Belt Kit

Part No. 1687574
Ariens Part No. 20200210

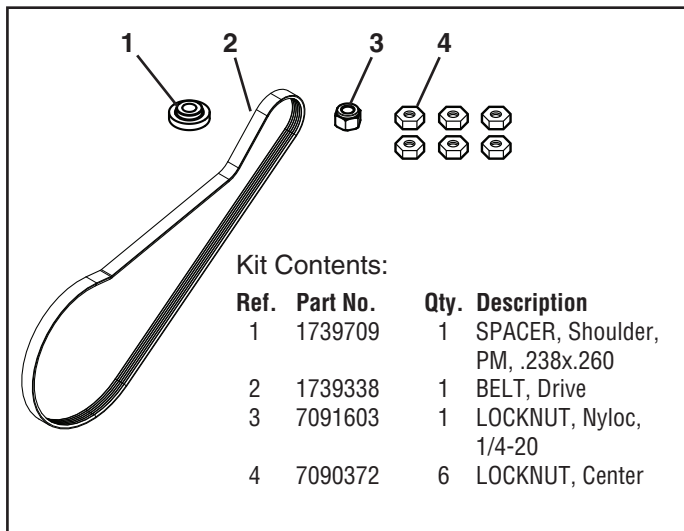


Figure 1. Contents

Kit Purpose: This kit replaces the spacer, nut, and belt on single-stage snowthrowers that were assembled with the wrong nut torque, and then used.

⚠️ WARNING

Amputation hazard.

Moving parts pose an amputation hazard. Turn the engine OFF and remove the key prior to servicing.

Repair Procedure:

REMOVE THE BELT COVER

1. Remove the screws securing the top and side (A&C, Figure 2) of the cover (B).
2. Remove the cover (B).

CHECK THE AUGER BEARING RETAINER SCREWS

3. Release tension on the drive belt (E, Figure 4).
4. Secure the auger. Using an impact wrench set to **clockwise**, remove the auger pulley (B, Figure 3).
5. Inspect the six taptite screws (A) securing the auger bearing retainers to the housing. They should be torqued to 7 ft. lbs (84 in. lbs).

If they are stripped, hold the screw with a wrench and install a center-lock nut on the threaded side of the screw. Torque to 7 ft. lbs. (84 in. lbs.)

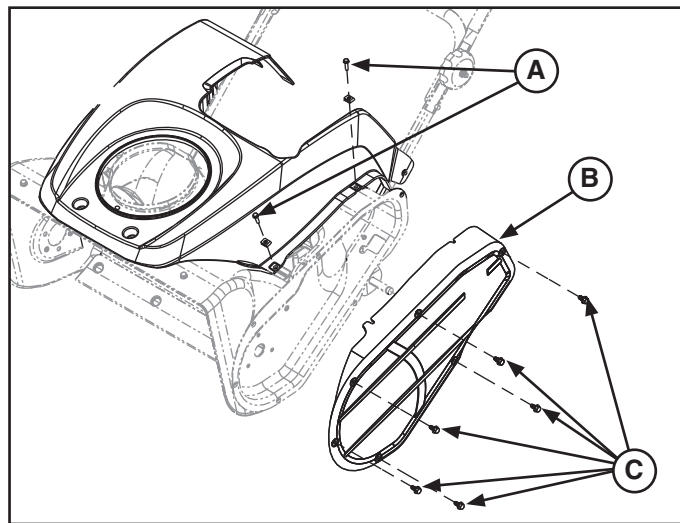


Figure 2. Remove Cover

- A. Top Cover Screws
- B. Cover
- C. Lower Cover Screws

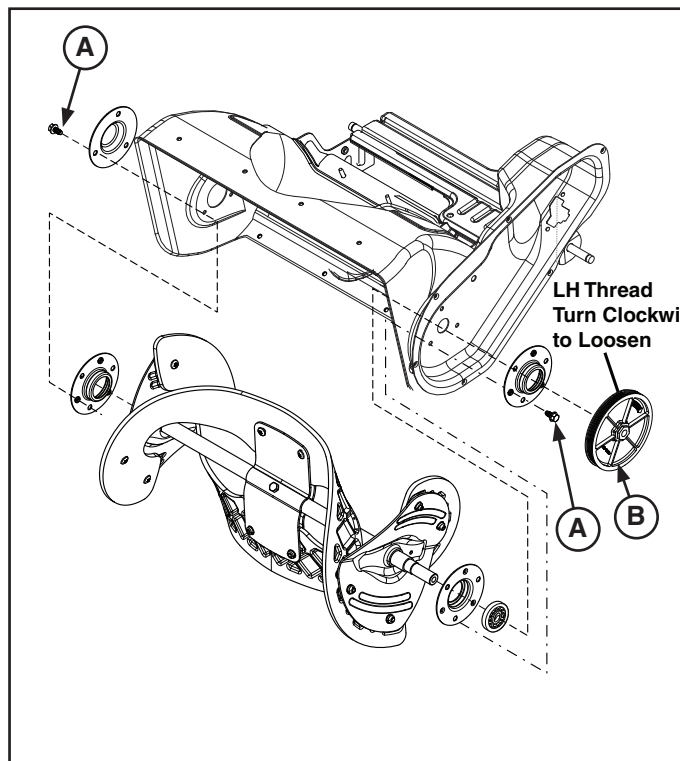


Figure 3. Replace Belt, Spacer, and Nut

- A. Auger Bearing Retainer Screws (3 per side)
- B. Auger Pulley

REPLACE THE IDLER SPACER AND DRIVE BELT

6. Remove and discard the original nylock locknut (D, Figure 4) and spacer (A). Retain the washer (C) and idler arm (B).
7. Install the new spacer (A), original idler arm (B), original washer (C), and secure with a new locknut (D). Torque the locknut to 6-8 ft. lbs (72-104 in. lbs).
8. Reinstall the drive pulley by threading it **counter-clockwise** onto the auger shaft. Tighten to 60 ft. lbs.
9. Remove and replace the drive belt (E) with the one provided with this kit.
10. Reinstall the cover (see Figure 2).

WARNING

Amputation hazard.

The auger MUST stop spinning within 5 seconds of the auger control being released..

11. Test run the unit.

When the auger control is engaged, the auger should spin. When the auger control is released, the auger should come to a complete stop within 5 seconds.

When released, the auger cable should have a small amount of slack.

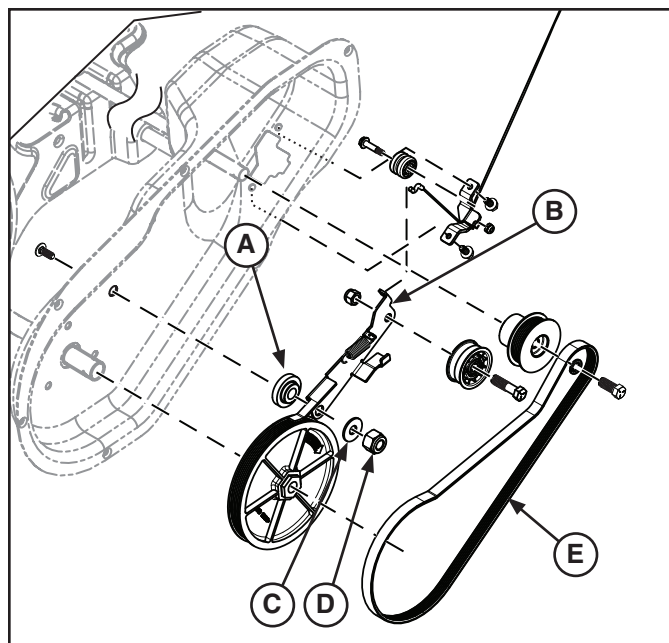


Figure 4. Replace Belt, Spacer, and Nut

- A. Spacer (Replace)**
- B. Idler Arm (Retain and Reuse)**
- C. Washer (Retain and Reuse)**
- D. Locknut (Replace)**
- E. Belt (Replace)**