



Ariens Company
655 W. Ryan St.
Brillion, WI 54110
www.ariens.com

Service Bulletin

Product Family: 895022 PM-3084 Reels

Subject: Reel Motor Replacement

Dealer Action: Replace Existing Reel Motors

Model	Serial Number Range	Description
895022	000101 – 000120	3-Reel Outfront Attachment

Ariens Company has upgraded the hydraulic motors used to drive the reels on the 895022 3-Reel Outfront Attachment to ensure reliability and a high quality of cut in all mowing conditions. These motors were used in manufacturing starting at serial number 000121.

Ariens recommends that all 895022 units in inventory and in the field have the new hydraulic motors. The parts required to install the new components are collected in Reel Motor Kit p/n 79525100. The kit contains three hydraulic motors part number 07001407 and two motor guards p/n 03396751. The guards and motors install with existing hardware. Order and install the kits before putting a unit into service. Contact customers who have purchased 895022 units in the serial number range listed above and schedule a reel motor replacement at their convenience.

Note that the part number for the wheel motors did not change, so you will need to inspect the motors to determine whether all motors require replacement. Refer to the photo below for the differences between the two motors. The attached instruction sheet p/n 04086000 shows the correct installation procedure. Units that already have the new style motors do not need the kit installed.

Installation of kit p/n 79525100 will be covered under the unit's standard warranty terms. Dealers will be reimbursed 1.0 hour at their standard posted shop labor rate for the kit installation.

"Old style" motor has curved mounting plate. The slots open up or down.



"New style" motor has a more oval mounting plate. The slots open side to side.



Instruction Sheet

Kit Number: 79525100

REEL MOTOR REPLACEMENT KIT



WARNING: FAILURE TO FOLLOW INSTRUCTIONS could result in personal injury and/or damage to unit. Read, understand, and follow all safety practices in Owner/Operator Manual before beginning.

Package Contents

Check contents of your kit for the parts listed (Figure 1):

Item	Qty	Description	Ariens P/N
1	3	12cc Hydraulic Motor	07001407
2	2	Motor Guard	03396751

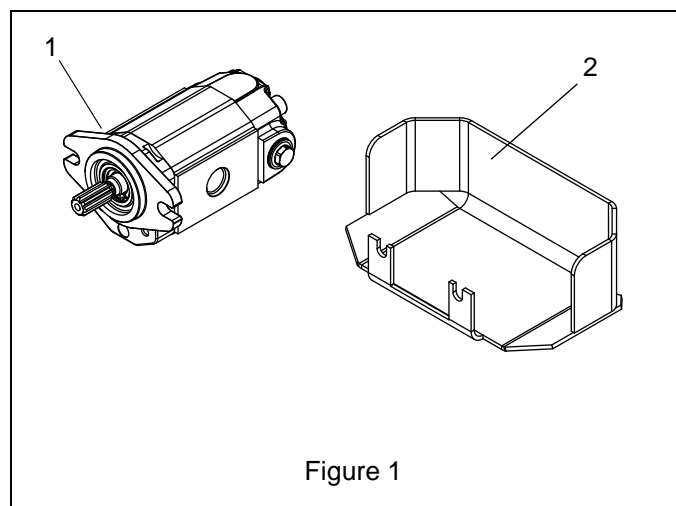


Figure 1

TOOLS REQUIRED

- 9/16", 5/8", 11/16", 15/16" Open-End Wrenches
- Torque wrench capable of measuring 38 – 115 lbf-ft (52 – 156 N•m)

INSTALLATION



WARNING: NEVER attempt to make any adjustments to unit while engine is running. STOP engine, wait for all moving parts to stop, and remove ignition key before servicing.



WARNING: HYDRAULIC FLUID can result in severe burns. Fluid in hydraulic system can penetrate skin and result in serious injury or death.

Be sure to stop the engine before doing any work on hydraulic parts.

Keep body and hands away from pin holes or nozzles which expel hydraulic fluid when under pressure. Use paper or cardboard, not hands, to search for leaks.

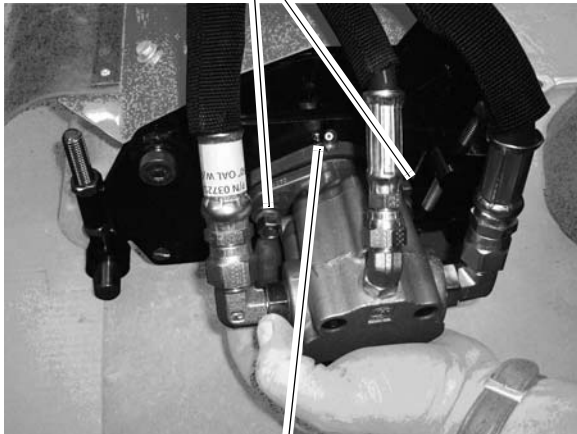
Ensure all hydraulic fluid connections are tight and all hydraulic hoses and lines are in good condition before applying pressure to system.

FOREIGN FLUID INJECTED INTO BODY can result in gangrene. Fluid must be surgically removed within a few hours by a doctor familiar with this form of injury.

Remove Reel Motor

1. Stop engine, wait for all moving parts to stop and hot parts to cool, and remove ignition key before servicing.
2. Place a container under the reel motor to catch any hydraulic oil spills. Remove the existing motor guard and the existing reel motor using a 9/16" wrench.
3. Mark the three hydraulic hoses on the motor, and then disconnect the hoses. Remove the three hydraulic fittings from the motor. Refer to *Hydraulic System* on page 3 for fitting location and hose routing.
4. Rotate the grease zerk on the end of the reel head about 45 degrees to give access to the lube point when the new motor is installed.

Loosen mounting nuts and then remove guard and motor.



Rotate grease zerk for access when new motor is installed.

Figure 2

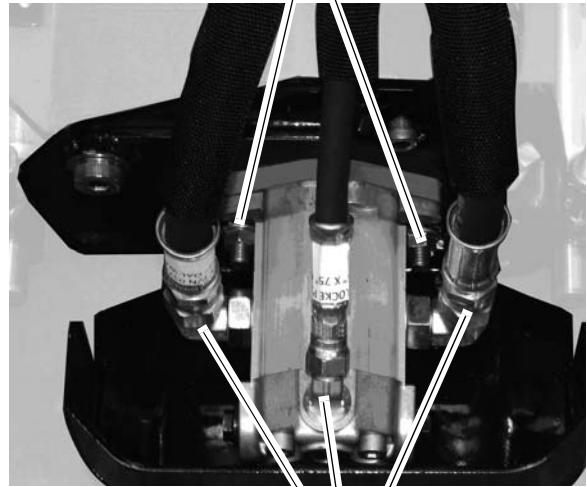
Install New Reel Motor

1. Install the fittings removed in step 3 on the new reel motor. Tighten the fittings to 100 – 110 lbf-ft (136 – 149 N•m).
2. Install the new reel motor and guard on the reel with the hardware used in step 2. Tighten the hardware to 95 – 115 lbf-ft (129 – 156 N•m).

NOTE: Install the motor guard on the front and right side reel assemblies. The motor on the left side reel is protected from collisions by the front reel.

3. Connect the hydraulic hoses to the new motor. Tighten the hoses to 38 - 42 lbf-ft (52 - 57 N•m).

Use existing mounting hardware to install new motor guard and motor.



Install existing fittings in same ports as on the previous motor. Then connect hoses.

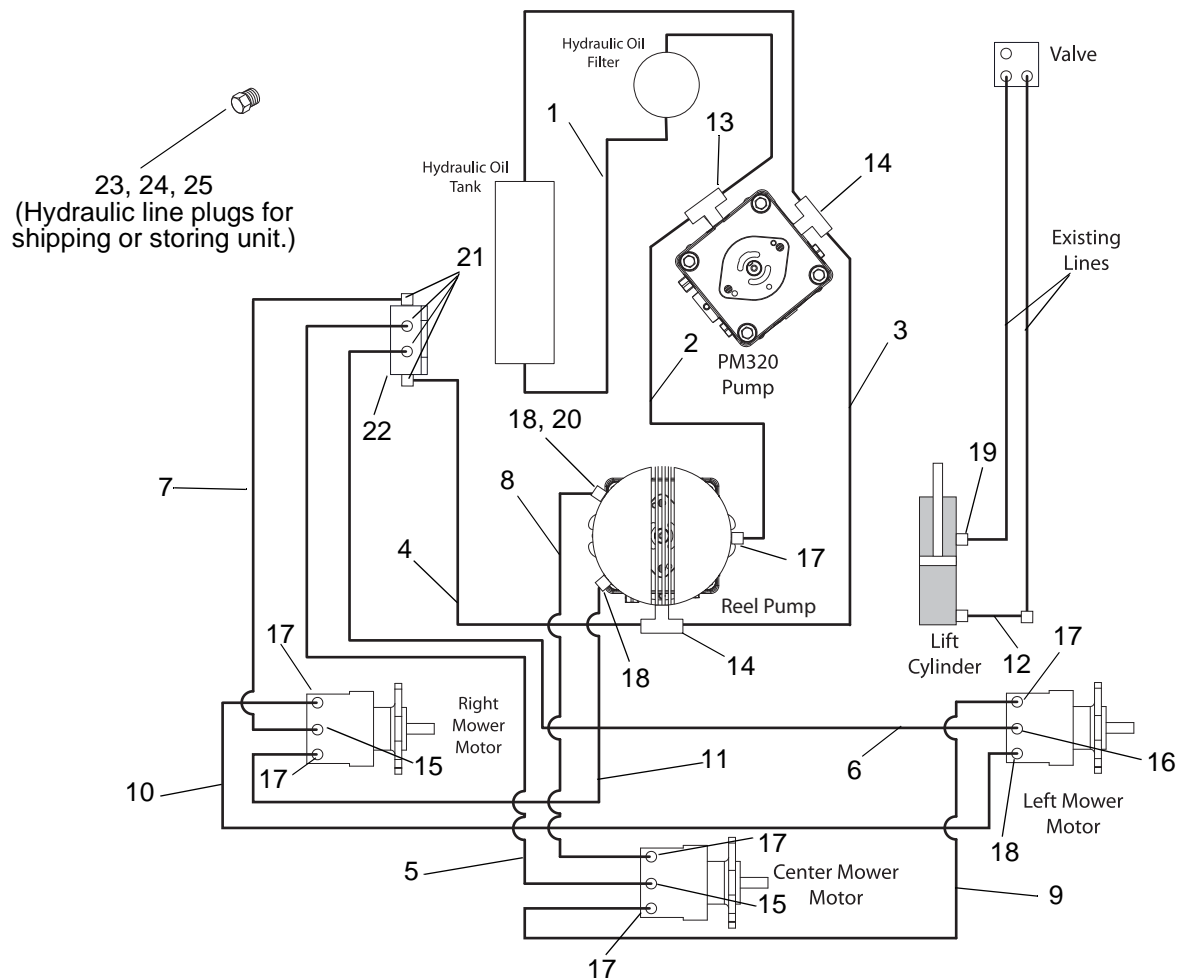
Figure 3

4. Safely start the unit and run the reel attachment for approximately three – five minutes to bleed air from the hydraulic lines. Watch for leaks.

IMPORTANT: Running the reel attachments "dry" without lubrication from grass clippings may damage the reels due to overheating. If the reel attachment cannot be run on grass when bleeding the hydraulic system, either set the bedknife clearance so there is no contact between the bedknife and the reel, or bleed the system with the hydraulic motors disconnected from the reels. Use extreme caution when bleeding the system with the motors disconnected from the reels. Make sure the motors are well-supported, moving parts are clear of all contact points, and that hydraulic lines will not expose operators to pressurized fluid. Remember to reset the bedknife to reel clearance after bleeding the system to ensure a quality cut.

5. Shut off the unit, stop engine, wait for all moving parts to stop and hot parts to cool, and then check the hydraulic fluid level and add as necessary.

HYDRAULIC SYSTEM



Item	Part No.	Qty.	Description
1	03721900	1	HOSE, 801*JC*J9*8-8-8-18.0"
2	03724700	1	HOSE, 801*JC*J9*8-8-8-20.0"
3	03724600	1	HOSE, 801*JC*JC*6-6-6-21.0"
4	03724800	1	HOSE, AX*JS*J9*6-4-4-15.0" W/Sleeve
5	03724900	1	HOSE, AX*JC*JC*4-4-4-75.0" W/Sleeve
6	03725000	1	HOSE, AX*J7*J9*4-4-4-58.0" (270 deg.) W/Sleeve
7	03725100	1	HOSE, AX*JC*J9*4-4-4-51.0" W/Sleeve
8	03725200	1	HOSE, AX*JC*J9*8-8-8-44.5" W/Sleeve
9	03725300	1	HOSE, AX*JC*JC*8-8-8-82.5" W/Sleeve
10	03725400	1	HOSE, AX*JC*J7*8-8-8-99.0" W/Sleeve
11	03725500	1	HOSE, AX*JC*J9*8-8-8-50.0" W/Sleeve
12	03725600	1	HOSE, AX*JO*JC*4-4-4-7.0" W/Sleeve
13	03725800	1	FITTING, #8 ORF #8ORF #8ORB TEE
14	03725900	2	FITTING, #6 ORF-6ORF-8ORB TEE
15	03726000	2	FITTING, #4 ORF #4ORB 45°
16	03726100	1	FITTING, #4 ORF #4ORB 90°
17	03726200	6	FITTING, #8 ORF #8ORB 90
18	03726400	3	FITTING, #8 ORF #8ORB STRAIGHT
19	07001607	2	FITTING, #4 ORF #6ORB 90° 2
20	03726900	1	ADAPTER, #8 ORF #8ORF FEMALE 90°
21	03726500	4	FITTING, #4 ORF #4 PIPE 90
22	03723100	1	MANIFOLD BLOCK - FOUR PORT 1/4" NPT
23	07001608	1	#8 ORF MALE (I-13/16 PLUG)
24	07001609	1	#6 ORF MALE (I-11/16 PLUG)
25	07001610	2	#4 ORF FEMALE (Y-1/4 CAP)