



988

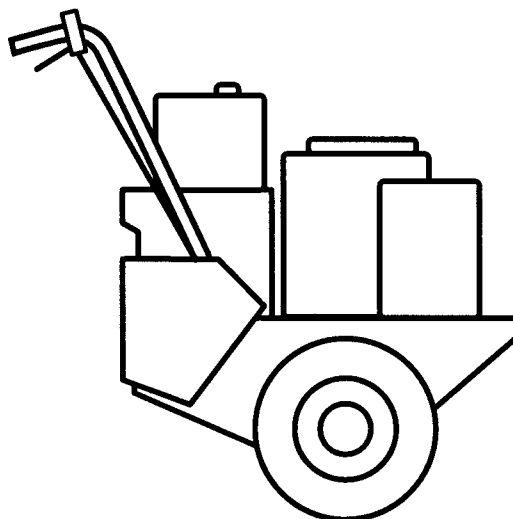
Series

PRO 150

**⚠ SAFETY MESSAGE ⚠**

The product for which you have requested information or replacement parts is not a current product. The replacement models incorporate product designs, safety features, safety instructions or warnings which represent the latest "State Of The Art" developments. For your safety and those around you please contact your nearest Ariens/Gravely Dealer for a demonstration of the current product safety provisions and features.

# Owner's Manual



# A Message to Gravely Customers . . .

Welcome to the world of Gravely equipment. We are pleased that you have purchased the best Pro available. The care you give your Gravely Pro will determine the satisfaction and service life you will obtain from it. Use this manual as your guide. By observing the instructions and suggestions in this manual, your Gravely Pro will serve you well for many years.

Your Gravely dealer will be happy to supply any service or advice which may be required to keep your Gravely Pro operating at peak efficiency. He stocks genuine Gravely parts and lubricants; manufactured with the same precision and skill as the original equipment. His factory trained staff is kept well informed on the best methods of servicing Gravely

equipment and is ready and able to serve you. If service is required, be prepared to supply the service person with the model and serial number of the Pro, as well as a full description of the problem encountered.

**NOTE:** The descriptions and specifications contained in this manual were in effect at the time the manual was approved for printing. Gravely reserves the right to discontinue models without notice and without incurring obligation. The Pro described within this manual may not be identified as either standard or optional and the various illustrations may not be applicable to your particular unit. If you have questions, always check with your Gravely dealer.

## Safety Alert Symbol and Notations

The following safety notations are used throughout this manual to call attention to special information or operating procedures. Understand the message in each notation and be alert to unsafe conditions and the possibility of personal injury.

**NOTE:** A **NOTE** points out general reference information regarding proper operation and maintenance practices.

**IMPORTANT:** An **IMPORTANT** statement indicates specific procedures or information that is required to prevent damage to the machine or its attachments.



**This safety alert symbol is used to attract your attention PERSONAL SAFETY IS INVOLVED! When you see this symbol - BECOME ALERT - HEED ITS MESSAGE.**



**DANGER:** Indicates an imminently hazardous situation that, if not avoided, will result in death or serious injury.



**WARNING:** Indicates a potentially hazardous situation that, if not avoided, could result in death or serious injury.



**CAUTION:** Indicates a potentially hazardous situation that, if not avoided, may result in minor or moderate injury.

The warranty will be valid only if the machine is maintained and operated as directed in this manual. Warranty will be valid only if the machine is operated with approved attachments.



### **WARNING**



The engine exhaust from this product contains chemicals known to the State of California to cause cancer, birth defects or other reproductive harm.

# Contents

Safety Alert and Notations .....	i
Safety Precautions .....	1
Safety Decals .....	4
Controls and Features .....	5
Operation .....	6
Lubrication and Maintenance .....	10
Adjustments .....	15
Storage .....	17
Service Manual .....	17
Trouble Shooting .....	18
Specifications .....	19
Dealer Preparation .....	21
Attachments .....	22
Accessories .....	23
Warranty .....	24

Specific Model and Serial Numbers are on a label located on the frame of your Pro and on a label located on the product registration form. Record those numbers and transfer the label from the product registration to place indicated. Use these numbers whenever parts or service is required.

# Models

<b>Model 988059</b> Pro-150, 14 Kawasaki Serial No. 000101 and up	<b>Model 988060</b> Pro-150, 12.5 Kawasaki Serial No. 000101 and up
<b>Model 988069</b> Pro-150, 14 Kohler Command Serial No. 000101 and up	<b>Model 988070</b> Pro-150 12.5 Kohler Serial No. 000101 and up
<b>Model 988074</b> Pro-150, Export, 12.5 Kohler Serial No. 000101 and up	<b>Model 988301</b> Pro-150,Export 12.5 Kawasaki Serial No. 000101 and up

**NOTE:** All references to "Left", "Right", "Front" and "Rear" are given from operator's position.

Model Number \_\_\_\_\_

Serial Number \_\_\_\_\_

TRANSFER  
MODEL SERIAL  
LABEL FROM  
PRODUCT  
REGISTRATION

## Safety Precautions

Improper use of this equipment can injure people and damage the equipment. People using or servicing this equipment must read and follow the instructions in this manual.

It is important to understand that this manual and any other Gravely instruction manuals do not cover every possible danger. It is impossible for Gravely to know all possible dangers in operating and servicing the equipment.

The purchaser must give these instructions to the people operating and maintaining this equipment. These people must use eye and foot protection.

### Training

Read this manual, the attachment manual and the engine manual carefully before operating unit. Learn the location and function of all controls.

Learn how to use the controls to stop the wheels and attachment quickly in an emergency.

Understand and follow each danger, warning, caution and instructional decal installed on this product.

Never permit children to operate the Pro. Do not allow adults to operate it without proper instruction.

Safe operation of this equipment requires your complete and unimpaired attention at all times. Do not operate unit after or during the consumption of drugs or alcohol.

Keep all people and animals away from the operating area.

# Safety Precautions (Continued)

## Preparation

Use caution with gasoline. Gasoline is very flammable and its vapors are explosive. Keep it in a clean, tight and approved (Red) container. Never put gasoline in the fuel tank while the engine is running or hot. Clean up spilled gasoline before starting engine. Do not fill fuel tank indoors. Never allow smoking materials, sparks or flame (match, pilot light, etc.) near mower or fuel container. Replace fuel tank cap and fuel container cap securely.

Inspect area where equipment is to be used and remove all material which could be thrown by the attachment such as stones, sticks, wires and other foreign objects.

When hauling the equipment, connect the chassis to the transporting vehicle. Never connect from control levers, rods, or like items that could be damaged.

Replace all parts that become damaged or lost.

Wear hand, foot, head, ear and eye protection. Do not wear loose clothing, which might get caught in rotating parts of the unit.

Before making adjustments or servicing, move the PTO to "Off", turn the ignition switch to "Off", remove key and wait until all moving parts completely stop. Do not make cutting height adjustment while engine is running.

## Operation

Be certain that all shields, guards, and interlock switches are in the correct position and operating properly.

Before starting the engine, put the PTO lever in the "Off" position and the gear shift lever in the neutral "N" position.

Check the operation of the operator presence controls before operating the mower. See Operation Section of this manual for proper operation.

Do not use the equipment in the dark without adequate lighting.

Keep away from moving parts. Stay clear of the mower discharge chute and keep the deflector in the down position whenever the engine is running.

Do not let people other than the operator near the operating equipment. Never direct discharge of material towards bystanders. The operator is responsible for the safety of bystanders.

Do not operate the mower on gravel or on loose material such as sand. Stop mower when crossing gravel drives, walks or roads. Objects may be picked up and thrown by the mower blades causing damage or injury.

Use a slow speed and engage the shift lever slowly when operating on slopes.

Look for and keep away from hazards, such as drop-offs. Stay alert for holes, rocks and other hidden hazards in the area of operation.

After hitting an object, disengage the PTO, turn off and remove the ignition key and wait for all motion to stop. Check for damage. Repair any damage before restarting unit.

Look behind when operating in reverse. Look for people and hazards.

Operate only from the operator's position, just behind the handlebars.

Travel across slopes, not up and down. Use extreme caution when changing direction on slopes. Do not mow steep slopes.

If there is a sudden change in the sound or vibration of the equipment, disengage the PTO, turn off and remove the ignition key, wait for all motion to stop and check for damage. Repair any damage or failure before restarting unit.

Never run the engine indoors except to move it outside. Exhaust fumes are dangerous.

Go slowly on slick surfaces. Always be sure of your footing, keep a firm grip on the handlebars and walk, never run. Never operate the equipment in wet grass.

Follow traffic laws when operating on or near a road.

Before leaving the operator's position, put the PTO lever in the "Off" position, turn off and remove ignition key. Move the shift control to first gear position.

# Safety Precautions (Continued)

Do not touch parts which might be hot from operation. Before attempting to maintain, adjust or service allow such parts to cool.

## Maintenance

Keep the equipment in good condition. Maintain it as directed in this manual. Check all hardware at regular intervals.

Use only Gravely accessories, attachment and replacement parts.

Do not overspeed the engine. Do not override the governor.

Before making any repairs, adjustments, inspections or cleaning unit disengage the PTO, turn off and remove the ignition key and wait for all motion to stop.

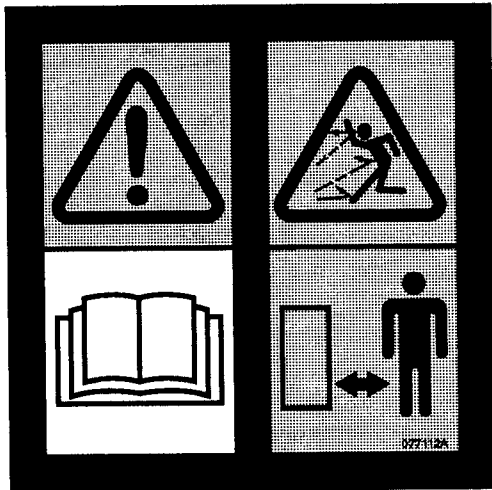
To reduce fire hazard and overheating, keep equipment free of grass, leaves, debris or excessive lubricants.

Worn out mufflers can result in fire or explosion and should be replaced immediately.

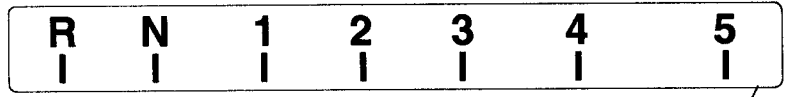
Never store equipment with gasoline in tank inside a building where fumes may reach an open flame or spark. Allow engine to cool before storing in any enclosure.

Refer to Storage Section of owners manual if unit is to be stored for extended periods.

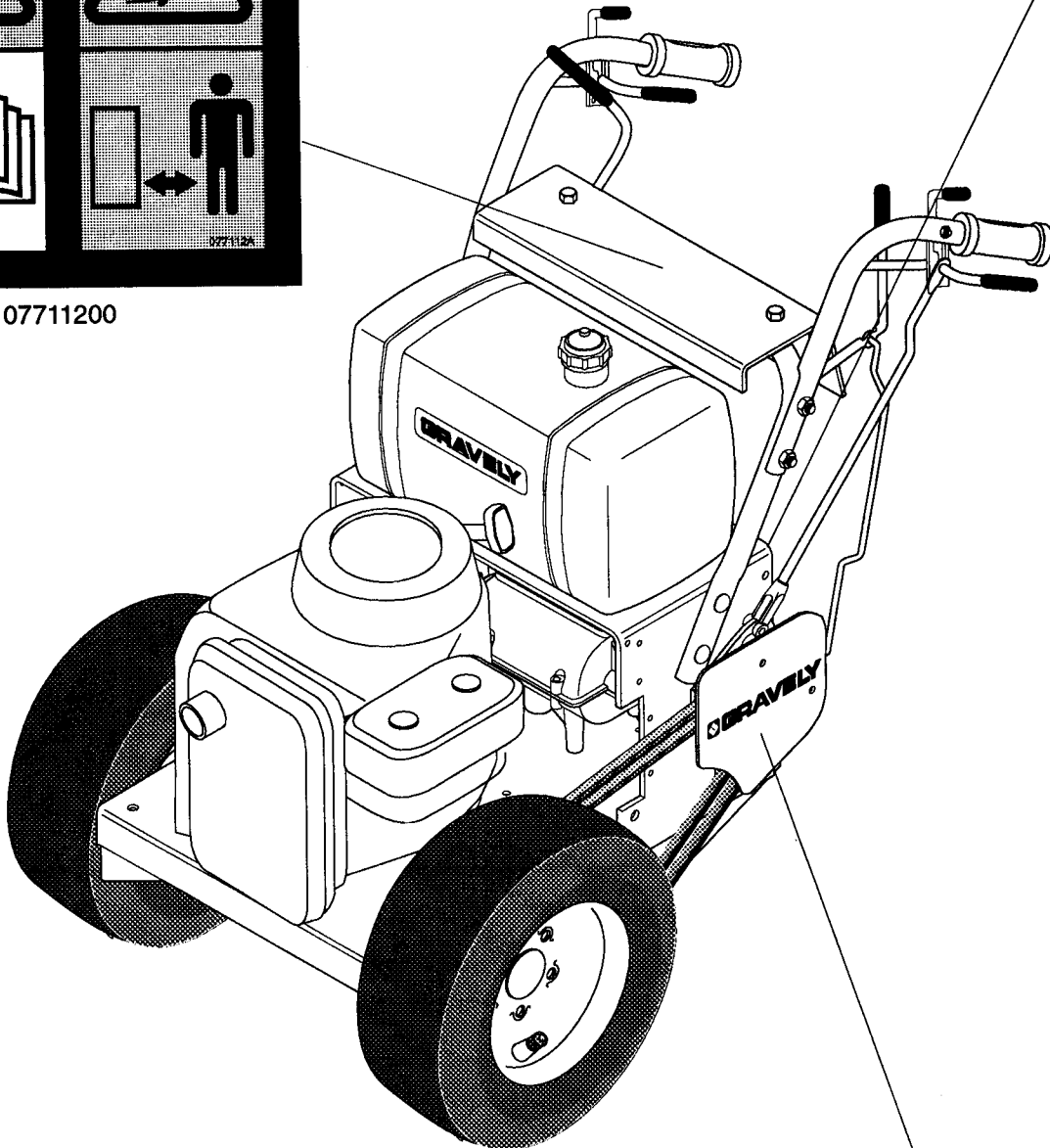
# Safety Decals



07711200

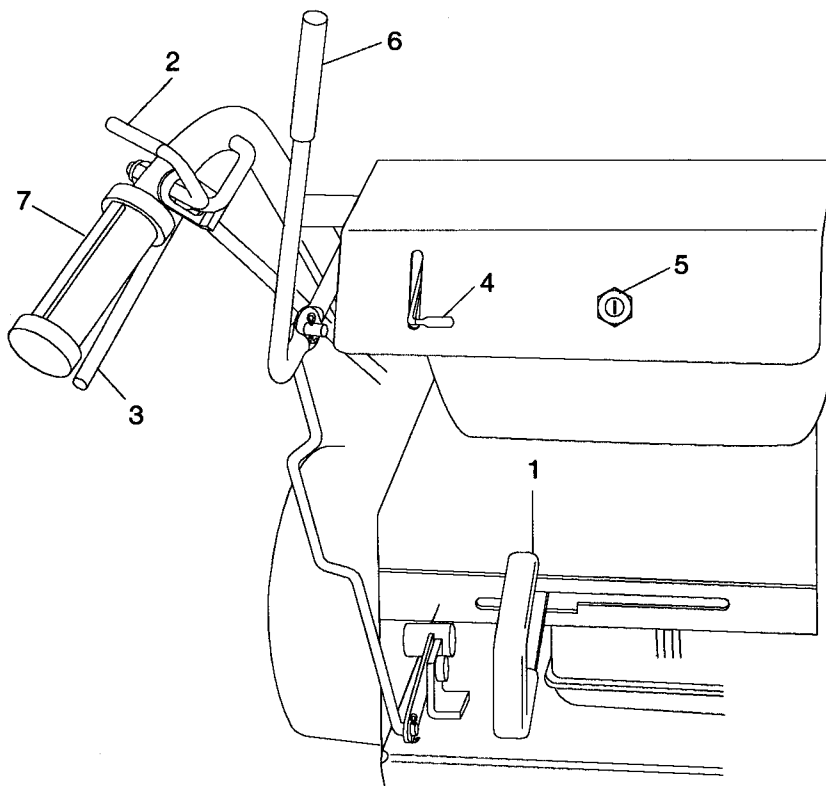


07874900



07874900

# Controls and Features



- |                         |                              |
|-------------------------|------------------------------|
| 1. Shift Lever          | 5. Ignition Switch           |
| 2. Steering Lever Latch | 6. PTO Lever                 |
| 3. Steering Lever       | 7. Operator Presence Control |
| 4. Throttle-Choke Lever |                              |

**Figure 1: Control and Feature Locations**

# Operation

Read this owner's manual carefully before operating the Pro.

## The Steering Levers

The steering levers serve two functions:

The steering levers are used to steer the Pro. Pull up on the left hand lever to turn to the left. Pull up on the right lever to turn to the right. Holding both levers up stops the Pro. See figure 1.



**WARNING:** When the engine is running and the transmission is in gear, holding only one steering lever up will cause the Pro to circle around one drive wheel.

The steering levers are also used to shift the Pro. This can be done in two different ways.

Pull up both steering levers and shift using your knee. Release both levers slowly.

Pull up and hold both steering levers while you lock the right hand steering lever latch. Continue to hold up and left hand steering lever while using your right hand to move the shift lever to select the desired speed. Unlock the right hand steering lever and release both steering levers slowly.

## The Steering Lever Latches

The steering lever latches are used to hold the steering levers in the up position. Engaging a steering lever latch will free one of the operator's hands for a throttle adjustment, etc. See figure 1.

## Operator Presence Control

One of the operator presence controls has to be depressed so that the power take off PTO, or traction drive can be operated.



**CAUTION:** The operator presence control is to protect the operator from the moving blades of the mower and the powered moving of the Pro. Operate the equipment only when the operator presence control is in working condition. This control is not operating properly if the engine does not stop when both the right hand and left hand operator presence controls are released and either the PTO lever is engaged or the shift lever is out of the neutral position.

## The Ignition Switch

The ignition switch is operated with a removable key. The switch has two positions, "Off" and "On". See figure 1.

To start the engine, the key must be in the "On" position. To stop the engine, turn the key to the "Off" position.

## The Throttle - Choke Lever

The throttle lever is used to change the speed of the engine. Moving the throttle lever to the "Fast" position increases the engine speed. Moving the lever to the "Slow" position decreases the engine speed. See figure 1.

The throttle lever also serves as the choke control. Move the throttle lever to the "Choke" position to start a cold engine.

## The Shift Lever

The shift lever is used to select the direction and speed of the Pro. "R" is for reverse, "N" for neutral, "1" indicates the slowest forward speed and the other numbers from "2" to "5" indicate increasingly faster forward speeds. See figure 1.

## The Power Take Off (PTO) Lever

The power take off (PTO) lever is used to engage and disengage the mower. When the PTO lever is in the "On" position, the mower is engaged; when the PTO lever is in the "Off" position, the mower is disengaged. See figure 1.

## Starting and Stopping the Engine

To start the engine:

- Unlock the steering lever latches. See diagram 1.



**WARNING:** When the engine is running and the transmission is in gear, releasing only one steering lever will cause the Pro to circle around one drive wheel.

- Put the shift lever in the neutral "N" position. See diagram 2.



# Operation (Continued)

- Put the shift lever in the neutral "N" position. See diagram 2.
- Put the PTO lever in the "Off" position. See diagram 1.
- If the engine is cold, move the choke control to the "choke" position. If the engine is warm or hot, move the throttle to the "Fast" position. See figure 1 and diagram 1.
- Turn ignition switch to the "On" position and pull recoil starter handle.
- As soon as the engine starts, move the choke control to the "Off" position from the "Choke"

position. Wait until the engine is running smoothly before operating the Pro.

To stop the engine, move the throttle lever to the "Slow" position and turn the ignition key to the "Off" position.

## Operating

Operate the Pro only when in the operator's position directly behind the handlebars.

**NOTE:** One of the operator presence controls must be held down at all times whenever the transmission is in gear and/or the PTO lever is in the "On" position.

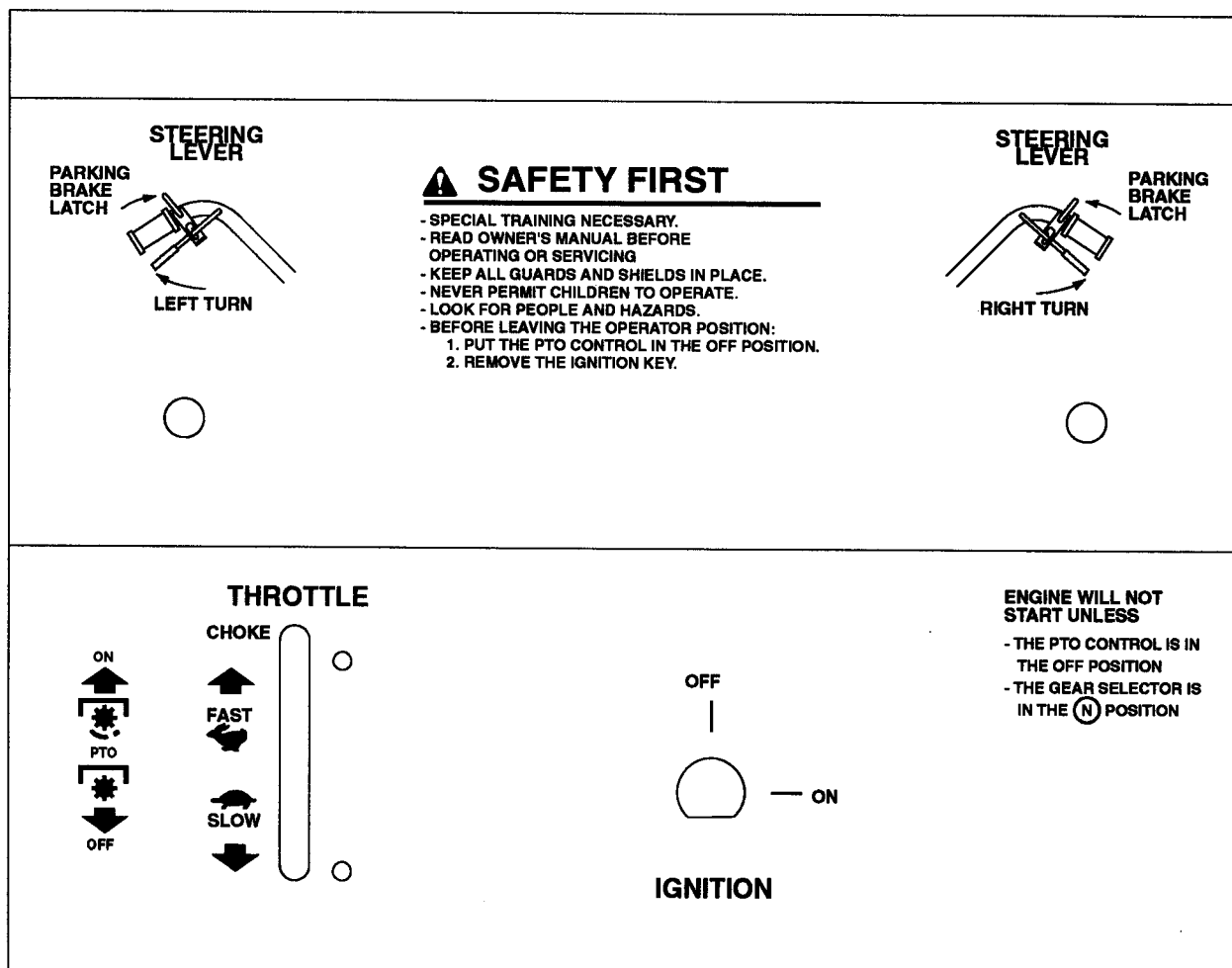


Diagram 1

## Operation (Continued)

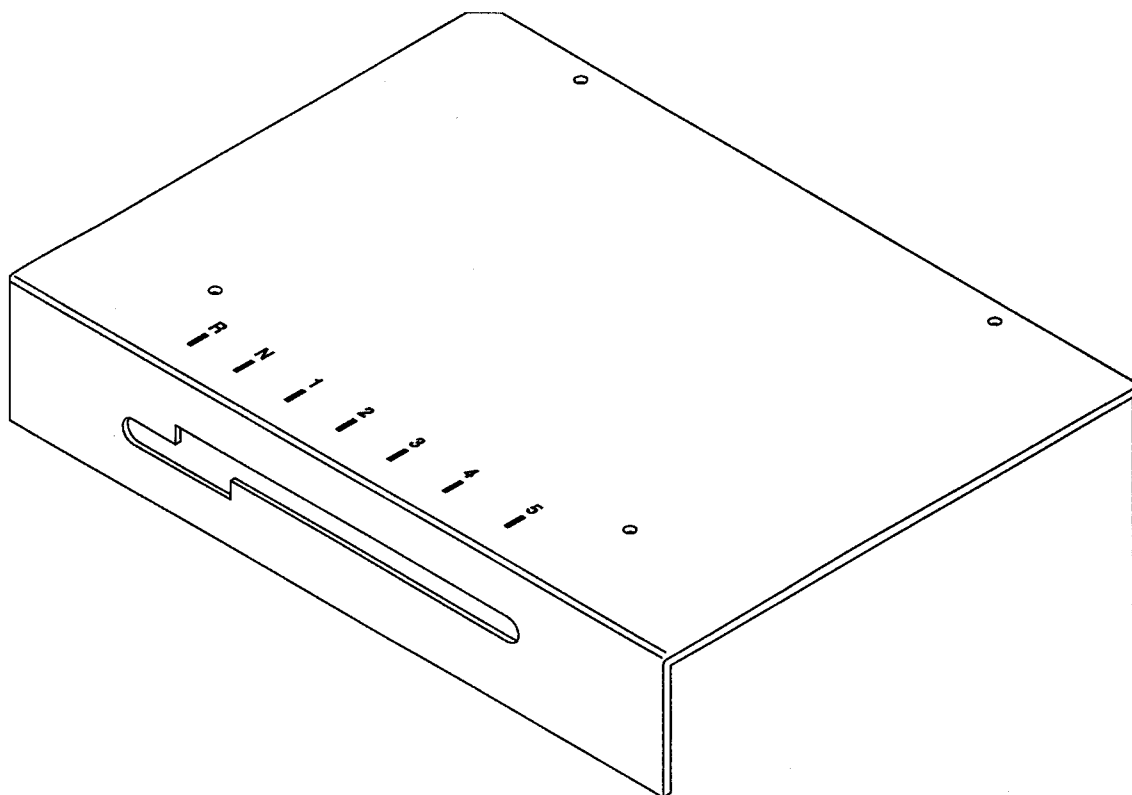


Diagram 2

To operate the Pro:

- Unlock the steering lever latches. See diagram 1.



**WARNING:** When the engine is running and the transmission is in gear, holding only one steering lever up will cause the Pro to circle around one drive wheel.

- Start the engine. Wait until the engine is running smoothly.
- Move the throttle lever to the "Fast" position. See figure 1 and diagram 1.
- To move the Pro forward, pull up both steering levers and shift into first gear using your knee. Release both steering levers slowly. To move to the rear, pull up and hold both steering levers while you lock the right hand steering lever latch. Continue to hold up the left hand steering lever while using your right hand to move the shift lever into the reverse "R" position by pushing down and moving left. Unlock the right hand steering

lever and release both steering levers slowly to move backwards. (NOTE: Reverse is an assist. It may be necessary to pull back on the handlebars or push down on both steering levers.) See diagrams 1 and 2.



**WARNING:** Use a low gear until you learn how to operate the Pro.

- Use the steering levers to steer the unit. Pulling up the left hand lever will cause the Pro to turn to the left. Pulling up the right hand lever will cause the Pro to turn to the right. See diagram 1.



**WARNING:** When the engine is running and the transmission is in gear, releasing only one steering lever will cause the Pro to circle around one drive wheel.

# Operation (Continued)

- To mow with the Pro, move the shift lever to the neutral "N" position. Slow engine down to about half speed. Then ease the PTO lever into the "On" position to engage the mower. Move the shift lever to one of the numbered speed positions. See diagrams 1 and 2.

**NOTE:** Never engage the PTO if the mower is plugged with grass or other material. It may cause damage to the mower drive belt.

- To disengage the mower, move the PTO lever to the "Off" position. See diagram 1.
- When you know how to operate the Pro, select a gear appropriate to your mowing conditions. See diagram 2.

To stop the Pro:

Pull up both steering levers and move the shift lever to the neutral "N" position using a knee. Move the throttle lever to the "Slow" position and turn the ignition key to the "Off" position. See diagram 1, diagram 2 and figure 1.

Or stop the Pro as follows:

Pull up both steering levers. Next hold up both steering levers while you lock the right hand steering lever latch. Then continue to hold up the left hand

steering lever while you use your right hand to move the gear selector lever to the neutral "N" position.

Move the throttle lever to the "Slow" position and turn the ignition key to the "Off" position. Finally, unlock the right hand steering lever latch. See diagram 1 and figure 1.



**WARNING:** When the engine is running and the transmission is in gear, holding only one steering lever up will cause the Pro to circle around one drive wheel.

## Parking

To park the Pro:

- Move the gear selector lever to the neutral "N" position. See diagram 2.
- Move the throttle lever to the "Slow" position. See figure 1 and diagram 1.
- Turn the ignition key to the "Off" position and remove the key.
- When the engine has stopped, put the gear selector lever in first gear.

# Lubrication and Maintenance

Correct maintenance can increase the life of the Pro. It is important that the items shown in chart 1 be done at the correct time intervals. Use chart 2 to record the actual hours and the date at which each service item is performed.

MAINTENANCE SCHEDULE				
SERVICE PERFORMED	TIME INTERVALS BETWEEN SERVICE			
	DAILY	25 HRS.	200 HRS.	500 HRS.
Check the Engine Oil	●			
Check the Air Cleaner	●			
Check the Engine Cooling System	●			
Check the Tire Pressure	●			
General Lubrication		●		
Check the Fasteners		●		
Check the Traction Belt		●		
Check the Transmission Drive Belt		●		

Chart 1

# Lubrication and Maintenance (Continued)

SERVICE TO BE PERFORMED		General Lubrication	Check the Fasteners	Check the Traction Belt	Check the Transmission Drive Belt			
MAINTENANCE RECORD	TIME INTERVALS BETWEEN SERVICE	25 HRS.	●	●	●	●		
		ACTUAL HOURS						
		DATE						
		50 HRS.	●	●	●	●		
		ACTUAL HOURS						
		DATE						
		75 HRS.	●	●	●	●		
		ACTUAL HOURS						
		DATE						
		100 HRS.	●	●	●	●		
		ACTUAL HOURS						
		DATE						
		125 HRS.	●	●	●	●		
		ACTUAL HOURS						
		DATE						
		150 HRS.	●	●	●	●		
		ACTUAL HOURS						
		DATE						
		175 HRS.	●	●	●	●		
		ACTUAL HOURS						
		DATE						
		200 HRS.	●	●	●	●		
		ACTUAL HOURS						
		DATE						
		225 HRS.	●	●	●	●		
		ACTUAL HOURS						
		DATE						
		250 HRS.	●	●	●	●		
		ACTUAL HOURS						
		DATE						
		275 HRS.	●	●	●	●		
		ACTUAL HOURS						
		DATE						
		300 HRS.	●	●	●	●		
		ACTUAL HOURS						
		DATE						
		325 HRS.	●	●	●	●		
		ACTUAL HOURS						
		DATE						
		350 HRS.	●	●	●	●		
		ACTUAL HOURS						
		DATE						

Chart 2

# Lubrication and Maintenance (Continued)

MAINTENANCE RECORD								
SERVICE TO BE PERFORMED	TIME INTERVALS BETWEEN SERVICE							
		General Lubrication	Check the Fasteners	Check the Traction Belt	Check the Transmission Drive Belt			
	375 HRS.	●	●	●	●			
	ACTUAL HOURS							
	DATE							
	400 HRS.	●	●	●	●			
	ACTUAL HOURS							
	DATE							
	425 HRS.	●	●	●	●			
	ACTUAL HOURS							
	DATE							
	450 HRS.	●	●	●	●			
	ACTUAL HOURS							
	DATE							
	475 HRS.	●	●	●	●			
	ACTUAL HOURS							
	DATE							
	500 HRS.	●	●	●	●			
	ACTUAL HOURS							
	DATE							
	525 HRS.	●	●	●	●			
	ACTUAL HOURS							
	DATE							
	550 HRS.	●	●	●	●			
	ACTUAL HOURS							
	DATE							
	575 HRS.	●	●	●	●			
	ACTUAL HOURS							
	DATE							
	600 HRS.	●	●	●	●			
	ACTUAL HOURS							
	DATE							
	625 HRS.	●	●	●	●			
	ACTUAL HOURS							
	DATE							
	650 HRS.	●	●	●	●			
	ACTUAL HOURS							
	DATE							
	675 HRS.	●	●	●	●			
	ACTUAL HOURS							
	DATE							
	700 HRS.	●	●	●	●			
	ACTUAL HOURS							
	DATE							

Chart 2 (Continued)

# Lubrication and Maintenance (Continued)

## The Engine

Correct maintenance can increase the life of the engine. See your engine manual for information on the operation and maintenance of your engine.

- Each day before operating, check the level of the oil in the engine. Never operate the engine when the oil level is below the add mark. See your engine manual.
- Each day before operating, check the air cleaner element. Dirt can decrease the flow of air to the engine. Your engine manual tells how to clean the air cleaner element.
- Each day before operating check the air cooling system on the engine. Debris can decrease the flow of air cooling the engine. Your engine manual tells how to clean the cooling system.

## Filling the Fuel Tank



**WARNING: Use caution with fuel. Fuel is very flammable. Keep fuel in a clean and tight container. Keep fuel away from fire or heat. Never put fuel in the fuel tank while the engine is running or hot. Clean up any spilled fuel before starting the engine.**

Add fuel to the fuel tank as needed. See your engine manual for the correct type and grade of fuel. To add fuel to the fuel tank:

- Put the Pro in an open area.
- Stop the engine.
- Clean the fuel cap and the area around fuel cap to prevent dirt from entering the fuel tank. See figure 2. Remove the cap from the fuel tank.
- Fill the fuel tank. Be careful not to spill the fuel.
- Install the cap on the fuel tank and tighten.
- Clean up any spilled fuel before starting the engine.

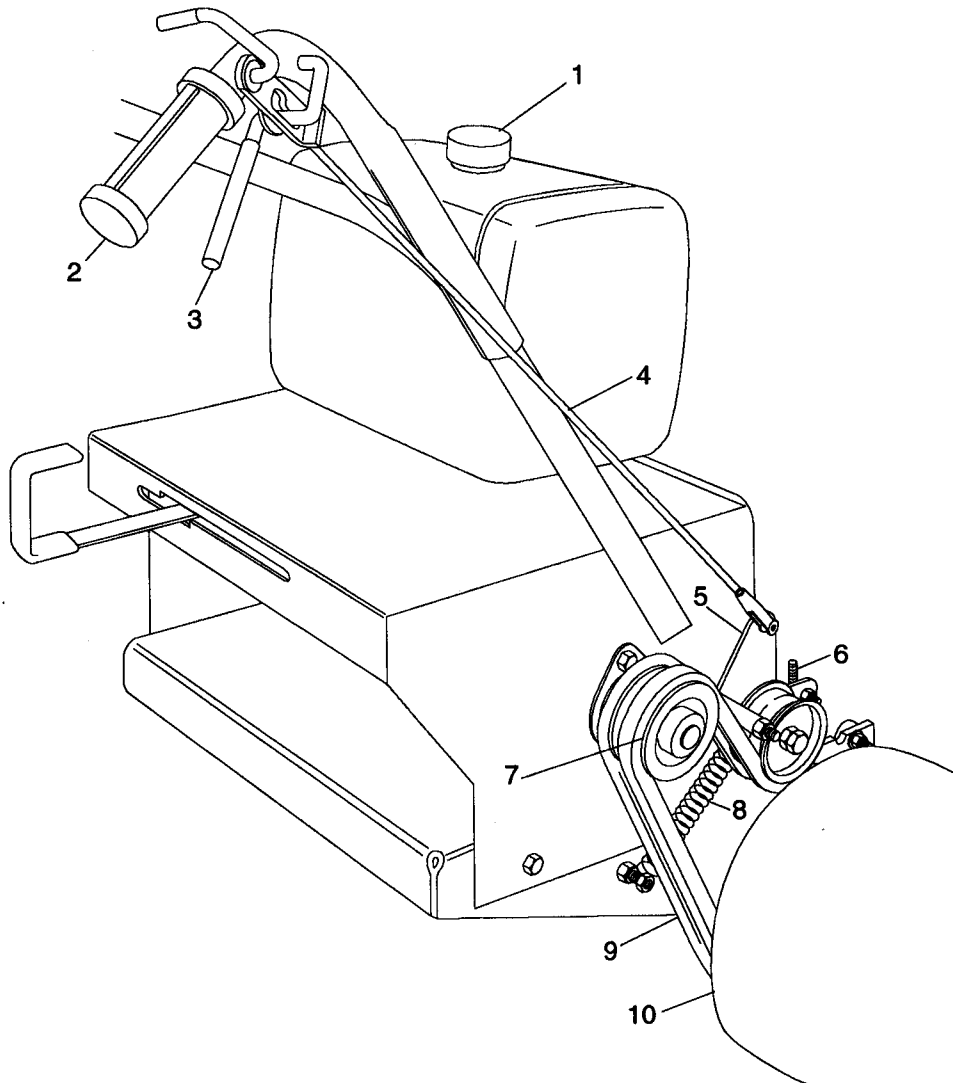
## Checking the Tires

Before each use, make a visual check of the tires. The correct air pressure is 12 to 15 psi (83 to 103 kN/m<sup>2</sup>).

## Lubricating the Pro

- There are lube fittings on each drive wheel. After every 8 hours of operation clean the fittings and add high quality lithium base grease. See figure 2.
- After every 8 hours of operation, apply a small amount of oil to the pivot points on the sides and underneath the Pro.

## Lubrication and Maintenance (Continued)



- |                              |                               |
|------------------------------|-------------------------------|
| 1. Fuel Cap                  | 6. Brake Rod                  |
| 2. Handlebar                 | 7. Transmission Shaft Pulley  |
| 3. Steering Lever            | 8. Clutch Idler Pulley Spring |
| 4. Clutch Actuating Rod      | 9. Traction Belt              |
| 5. Wheel Clutch Arm Weldment | 10. Drive Wheel               |

**Figure 2: Control Locations**

### Checking the Fasteners

Each day before operating, check all nuts, bolts, and other fasteners. Replace fasteners that are missing or damaged. Tighten all nuts and bolts to the torque shown in chart 3 unless shown differently.



# Adjustments

## Adjusting the Steering Levers

### Initial Adjustment:

- Stop the engine.
- Shift the transmission into neutral and operate the steering levers a couple of times. Do not roll the machine.
- With the steering levers in the disengaged position, adjust the clutch actuating rods until the gap between the end of each steering lever and handlebar grip is 2-1/2 to 3 inches. Obtain this measurement by adjusting the clevis on the end of each clutch actuating rod.
- Adjust the brakes by turning the lock nut on each brake rod until the desired amount of brake engagement is achieved when each steering lever is fully engaged.

**NOTE:** The traction belt must be disengaged as the brake starts to engage.

- Start the engine and try in low gear to check for proper engagement. With a new unit, new brakes or new belts, you will be required to make two or three readjustments in the first hour of operation.

### Readjusting the Steering Levers:

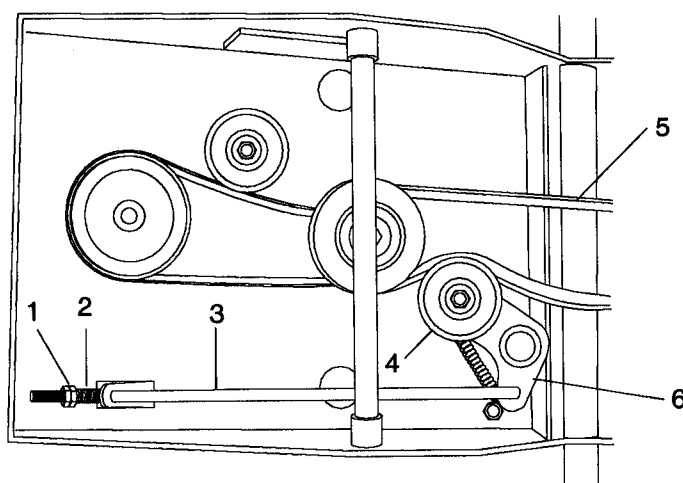
- Repeat above steps.
- Check to see if the gap between the steering lever and handlebar is 2-1/2 to 3 inches. If not, readjust per above.



**WARNING:** Improper adjustment of the steering levers can cause a loss of steering control.

## Adjusting the PTO Clutch

- Stop the engine.
- Move the PTO lever to the "On" position.
- Loosen the two jam nuts on the rear end of the PTO actuating rod.
- With the PTO lever in the "On" position, turn the two jam nuts forward until the gap in the coils of the spring is approximately .030" (.76mm). See figure 3.
- Lock the two jam nuts on the rear end of the PTO actuating rod.



- |                             |                     |
|-----------------------------|---------------------|
| 1. Jam Nuts                 | 4. PTO Idler Pulley |
| 2. Spring                   | 5. Mower Belt       |
| 3. PTO Clutch Actuating Rod | 6. PTO Clutch Arm   |

**Figure 3: PTO Belt Adjustment**

# Adjustments (Continued)

## Adjusting the Shift Lever Linkage

The transmission shift lever is fastened to the transmission shift arm with two 5/16-18 bolts. The bolt holes in both the arm and lever are slotted. When the shift lever is adjusted correctly, the shift lever is centered in the forward slot and just touching the reverse stop when the transmission is in neutral.

**NOTE:** You should not be able to shift into reverse without pushing down on the shift lever.

## Replacing the Traction Belts

- Stop the engine. Remove the ignition key.
- Release the steering levers.
- Raise the rear of the Pro so that the drive wheel is off the ground.
- Remove the traction belt guard.
- Remove the clutch idler pulley spring.



**WARNING:** An extension spring, when extended, stores energy and can be dangerous. Always use tools specifically designed for installing or removing an extension spring. Always compress or extend springs slowly.

- Remove cotter pin and clevis pin holding the clutch actuating rod to the wheel clutch arm weldment. See figure 2.

While slowly turning the drive wheel, work the traction belt off the transmission shaft pulley and remove over the drive wheel. See figure 2. Repeat for second belt.

Install the new pair of traction belts by reversing step 7 above. Always replace belts in matched sets of two.

- Connect the clutch rod to the wheel clutch arm weldment with the clevis pin and cotter pin.
- Put the clutch idler pulley spring back on.
- Put the traction belt cover back on.
- Lower the Pro.
- Check the adjustment of the steering levers. See adjusting steering levers.

## Replacing the Transmission Belt

- Stop the engine. Remove the ignition key. Put the PTO lever in the "Off" position. Put the shift lever in the neutral "N" position.
- Loosen the belt finger plate and remove the mower belt from the engine sheave.
- Loosen the 3/8-16 bolt which fastens the fixed idler pulley to the frame and slide the pulley to end of slot. (**NOTE:** Remove the bolt, spacer and idler pulley if necessary.)
- Remove the old transmission drive belt.
- Put the new transmission belt in the top groove of the clutch hub and on the transmission sheave.
- Tension the belt with the fixed idler pulley and tighten the 3/8-16 nut and bolt. (**NOTE:** It may be necessary to re-tension this belt during break-in.)
- Put the mower belt back on the engine sheave. Tighten the belt finger plate.

# Storage

## To Store the Pro:

Do the maintenance described in Lubrication and Maintenance Section.

Clean the unit thoroughly.



**WARNING:** Do not use harsh or abrasive cleaners on any painted surface. Do not allow gasoline or oil to remain on any silk screened surfaces.

Put paint or lubricant wherever paint has been removed.

See your engine manual for engine storage instructions.



**WARNING:** Fuel is very flammable. Make sure muffler and other engine parts are cool before removing the fuel from the fuel tank. Clean up spills immediately.

## To Take the Pro Out of Storage, do the Following:

Put fresh, clean fuel in the fuel tank.



**WARNING:** Fuel is very flammable. Clean any spilled fuel before starting the engine.

Begin the maintenance schedule specified in Lubrication and Maintenance Section.

# Service Manual

Service manuals are available for owners who wish to perform some of their own maintenance and service operations. Should a complete service manual be desired, order under the following part number.

When ordering parts always include the Model and Serial Number of your unit to assure prompt service. A parts manual is included in your literature package to make ordering of service parts easier.

**Pro 150 Power Unit  
Service Manual**

**Part No. 00034395**

Pro Model Number \_\_\_\_\_  
Pro Serial Number \_\_\_\_\_

**Mail Request to:**

**Ariens Service  
655 West Ryan Street  
P.O. Box 157  
Brillion, WI 54110-0157**

# Trouble Shooting

## 1. If the engine will not start:

**NOTE:** The engine will not start unless the shift lever is in the neutral "N" position and the PTO lever is in the "Off" position.

Turn the ignition key to the "Off" position. Move the shift lever to the neutral "N" position. Push the PTO lever to the "Off" position.

Adjust, if necessary, the PTO interlock switch so that the switch is closed when the PTO lever is in the "Off" position.

Check the adjustment of the shift linkage. See Adjustment Section.

Check and clean the spark plugs. If necessary, replace the spark plug (s). Adjust the spark plug gap. See your engine manual.

Check the fuel tank for fuel. Add fuel if necessary. Check the fuel for water or dirt. If necessary, replace the fuel with clean, fresh fuel.

Check the air cleaner. Clean or replace the filter elements if necessary. See your engine manual.

Check fuel shut-off valve.

## 2. If the Pro will not move or mow when the engine is running, do the following:

Stop the engine. Remove the ignition key.

See if the transmission belt is broken or out of place. If necessary, install, replace or adjust the transmission belt. See Adjustment Section.

See if the mower belt is broken or off the pulleys. If necessary, install, replace or adjust the mower belt. See Operation Section of the Pro Mower owner's manual.

## 3. If there are changes in the sound or vibrations of the Pro, do the following:

Stop the engine. Remove the ignition key. Remove the ignition wire from the spark plug.

Check the mower blades. If either is damaged, replace that blade.

See that the fasteners holding the blades are tightened to a torque of 120 ft. lbs. (163 Nm).

Check all the fasteners on the Pro. See section 4.5

## 4. If the Pro will not move when placed on an incline, do the following:

Check the transmission shaft pulley to see if it shows signs of wear in the belt groove. If it does, replace the pulley on each side. See figure 2.

Check to see that the steering and brake linkages are correctly installed and operating freely. If not, make the necessary corrections.

Check to see that the steering levers are adjusted correctly. See Adjustment Section.

Check to see if the traction belts are worn. If worn or stretched, replace both sets of belts. See figure 2. Always replace drive belts in matched sets of two.

# Specifications

<b>Model No.</b>	<b>988059</b>	<b>988060</b>	<b>988069</b>
<b>Description Name</b>	<b>14 HP Kawasaki</b>	<b>12.5 Kawasaki</b>	<b>14 HP Kohler</b>
Length	38.3" (97.3cm)	38.3" (97.3cm)	38.3" (97.3cm)
Height	39.0" (99.1cm)	39.0" (99.1cm)	39.0" (99.1cm)
Width	32.8" (83.3cm)	32.8" (83.3cm)	32.8" (83.3cm)
Weight Actual	232 Lbs. (105.5 kg)	210 Lbs. (95.5 kg)	232 Lbs. (105.5 kg)
Brakes & Steering	6" Band/Drum	6" Band/Drum	6" Band/Drum
Tire Size			
Front	13 x 6.00-6-2 Ply	13 x 6.00-6-2 Ply	13 x 6.00-6-2 Ply
Engine-Manufacture	Kawasaki	Kawasaki	Kohler
Cycle	4	4	4
Horsepower	14	12.5	14
Starting System	Recoil	Recoil	Recoil
Fuel Tank Cap.	4.5 Gals. US (17.1L)	4.5 Gals. US (17.1L)	4.5 Gals. US (17.1L)
Fuel	Gasoline	Gasoline	Gasoline
Governed RPM	3600 RPM	3600 RPM	3600 RPM
Crank Case Cap.	3 Pts.	3 Pts.	3 Pts.
Air Cleaner	Paper Element Form Precleaner	Paper Element Form Precleaner	Paper Element Form Precleaner
Transmission	Peerless 700-032	Peerless 700-032	Peerless 700-032
Speed-Forward Max.	5.2 mph	5.2 mph	5.2 mph
Reverse Max.	3 mph	3 mph	3 mph
Transmission Lube	Sealed	Sealed	Sealed
Drive Clutch	Belt Clutches on wheel drive	Belt Clutches on wheel drive	Belt Clutches on wheel drive
Tire Pressure	12 to 15 psi (83 to 103 kN/m <sup>2</sup> )	12 to 15 psi (83 to 103 kN/m <sup>2</sup> )	12 to 15 psi (83 to 103 kN/m <sup>2</sup> )

# Specifications

<b>Model No.</b>	<b>988070</b>	<b>988074</b>	<b>988301</b>
<b>Description Name</b>	<b>15 HP Kohler</b>	<b>12.5 HP Kohler</b>	<b>12.5 Kawasaki-Export</b>
Length	38.3" (97.3cm)	38.3" (97.3cm)	38.3" (97.3cm)
Height	39.0" (99.1cm)	39.0" (99.1cm)	39.0" (99.1cm)
Width	32.8" (83.3cm)	32.8" (83.3cm)	32.8" (83.3cm)
Weight Actual	232 Lbs. (105.5 kg)	232 Lbs. (105.5 kg)	210 Lbs. (95.5 kg)
Brakes & Steering	6" Band/Drum	6" Band/Drum	6" Band/Drum
Tire Size			
Front	13 x 6.00-6-2 Ply	13 x 6.00-6-2 Ply	13 x 6.00-6-2 Ply
Engine-Manufacture	Kohler	Kohler	Kawasaki
Cycle	4	4	4
Horsepower	15	12.5	12.5
Starting System	Recoil	Recoil	Recoil
Fuel Tank Cap.	4.5 Gals. US (17.1L)	4.5 Gals. US (17.1L)	4.5 Gals. US (17.1L)
Fuel	Gasoline	Gasoline	Gasoline
Governed RPM	3600 RPM	3600 RPM	3600 RPM
Crank Case Cap.	3 Pts.	3 Pts.	3 Pts.
Air Cleaner	Paper Element Form Precleaner	Paper Element Form Precleaner	Paper Element Form Precleaner
Transmission	Peerless 700-032	Peerless 700-032	Peerless 700-032
Speed-Forward Max.	5.2 mph	5.2 mph	5.2 mph
Reverse Max.	3 mph	3 mph	3 mph
Transmission Lube	Sealed	Sealed	Sealed
Drive Clutch	Belt Clutches on wheel drive	Belt Clutches on wheel drive	Belt Clutches on wheel drive
Tire Pressure	12 to 15 psi (83 to 103 kN/m²)	12 to 15 psi (83 to 103 kN/m²)	12 to 15 psi (83 to 103 kN/m²)

# Dealer Preparation

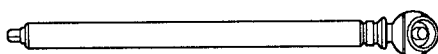
**Consumer Note:** Your Gravely Dealer is expected to complete these preparation steps and review important information, including this manual, with you before or upon deliver of unit.

The preparation information is included here so that you and your dealer may review it together.



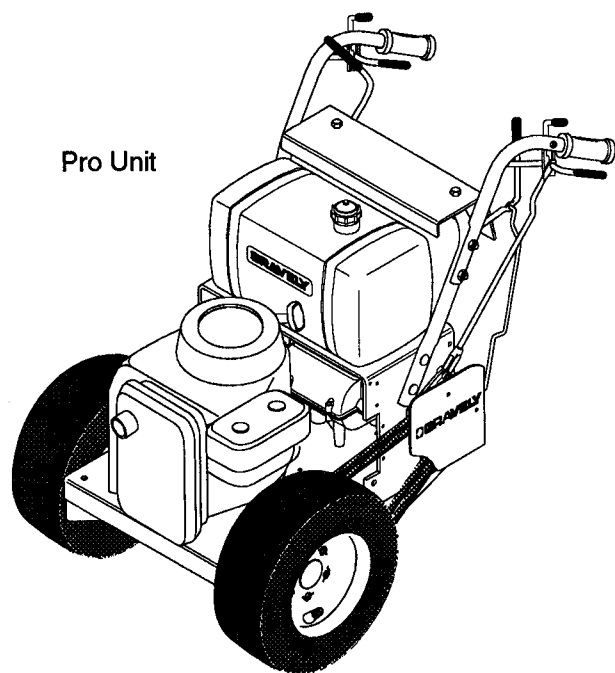
**WARNING:** Failure to follow all instructions could result in personal injury and/or damage to Pro. Remove wire from spark plug before attempting any adjustment or assembly procedures.

## Tools Required:



Tire Gauge

## Package Contents:



Pro Unit



Literature Pack

## Step 1

Remove the power unit from shipping container.

## Step 2

Adjust tire pressure to between 12 to 15 psi (83 to 103 kN/m<sup>2</sup>).

## Step 3

Add engine oil. See engine manual for specifications.

## Step 4

Check the adjustments outline in the Adjustment Section.

## Step 5

Add clean fuel to the fuel tank. See engine manual for grade.

## Step 6

Mount to mower.

## Step 7

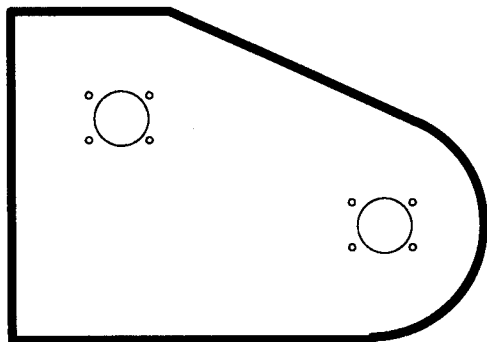
Check for loose hardware.

## Step 8

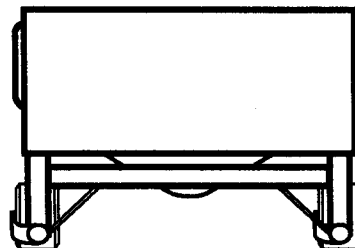
Check to see that interlock systems operate correctly.

# Attachments

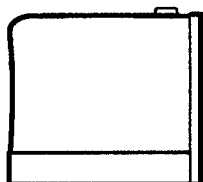
See your authorized Gravelly dealer to add these addition attachments to you Pro.



8884700 - 36" Side Discharge Mower



88804800 - 50" Mower



88801000 - Grass Catcher



# Accessories

**Enhance your Pro with these Gravely Accessories.**

78800200	Grass Catcher Adapter Kit (36" Mower)
78800400	Grass Catcher Adapter Kit (50" Mower )
78802600	Grass Catcher Adapter Kit (50" Fabricated Mower)
78801800	Battery
78801900	Tractor Cover
78506700	High Lift Blade Kit
78802000	Dual Drive Belt Kit
78800500	Mulching Kit
78800800	Mulching Kit
78506900	Sand Blade Kit
78802500	Handle Interlock Kit

**Be sure to always use genuine Gravely parts to keep your  
Pro running like new.**



## Two Year Limited Warranty

### PRO AND PROMASTER PRODUCTS

Gravely hereby warrants to the original purchaser that all Pro and Promaster products shall be free of defects in material and workmanship for **two years** from date of purchase. Gravely will provide for the replacement of any part found to be defective. Such repair or replacement will be free of charge to the original purchaser (labor and parts), except as noted below.

This warranty is subject to the following exceptions and limitations.

- ❖ **Purchaser Responsibilities:**
  - Maintenance and minor adjustments per Operators Manual.
  - Notification of need for warranty service
  - Transportation of the product to and from the place of warranty repair.
- ❖ **Product Registration:**
  - Return of Registration card to validate warranty.
- ❖ **Rental Use: - 90 days parts and labor**
  - Products used for rental purposes.
- ❖ **Warranty Service:**
  - For warranty service contact any Gravely dealer. For the name and location of the Gravely dealer in your area and for further warranty information contact Gravely.
- ❖ **Engines, engine accessories.**
  - Covered only by engine manufacturers warranty.
- ❖ **Batteries - One year pro-rated.**
- ❖ **Exclusions: - No Warranty**
  - No warranty is extended for normal maintenance, services and normal replacement items such as Spark Plugs, Oil, Oil Filters, Air Filters, Blades, Belts, Skids, Light Bulbs, Headlights, etc.
  - No warranty is extended on any product that has been altered, misused, mis-assembled, improperly adjusted, neglected or damaged by accident.
  - No warranty is extended for service completed by someone other than an Authorized Gravely Dealer.
  - No warranty is extended on any attachment not approved by Gravely nor any parts that are not genuine Gravely parts.
  - No warranty is extended on engines, and engine accessories.

Gravely reserves the right to incorporate any change in design into its products without obligation to make such changes on products previously manufactured.

---

#### DISCLAIMER OF FURTHER WARRANTY

Gravely makes no warranty, express or implied, other than this warranty. The implied warranties of merchantability and fitness for particular purpose are hereby disclaimed. Repair or replacement of parts proving to be defective in material or workmanship shall be the exclusive remedy for breach of this warranty. Gravely shall not be liable for incidental or consequential damages, including but not limited to damages for inconvenience, rental or purchase of replacement equipment, or for loss of profits or other commercial loss, resulting from a breach of this warranty.

Some states do not allow limitations on how long an implied warranty lasts, so the above statement may not apply to you. Some states do not allow the exclusion or limitation of incidental or consequential damages, so the above limitation or exclusion may not apply to you. This warranty gives you specific legal rights, and you may have other rights which vary from state to state.



655 West Ryan Street  
P.O. Box 157  
Brillion, WI 54110-0157  
Phone: 414-756-4400  
Fax: 414-756-4477

# Index

Accessories	23	Operator Presence Control	6
		Parking	4
Adjustments	15	Power Take Off Lever	6
Adjusting the PTO Clutch	15	Starting and Stopping the Engine	6
Adjusting the Shift Lever Linkage	16	Shift Lever	6
Adjusting the Steering Levers	15	Steering Lever Latches	6
Replacing the Traction Belts	16	Steering Levers	6
Replacing the Transmission Belt	16	Throttle-Choke Lever	6
Attachments	22	Safety Alert Symbol and Notations	i
Controls and Features	5	Safety Decals	4
Dealer Preparation	21	Safety Precautions	1
Package Contents	21	Maintenance	3
Steps to Assemble	21	Operation	2
Tools Required	21	Preparation	1
		Training	1
Lubrication and Maintenance	10	Service Manual	17
Checking the Fasteners	14	Specifications	19
Checking the Tires	13	Storage	17
Engine	13	Store the Pro	17
Filling the Fuel Tank	13	Take the Pro Out of Storage	17
Lubricating the Pro	13		
Maintenance Charts	10	Trouble Shooting	18
Models	1	Warranty	24
Operation	6		
Ignition Switch	6		
Operating	7		