



988

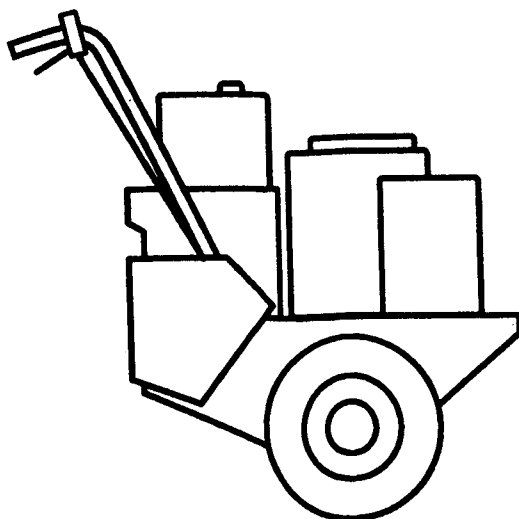
Series

PRO 150

▲ SAFETY MESSAGE ▲

The product for which you have requested information or replacement parts is not a current product. The replacement models incorporate product designs, safety features, safety instructions or warnings which represent the latest "State Of The Art" developments. For your safety and those around you please contact your nearest Ariens/Gravely Dealer for a demonstration of the current product safety provisions and features.

Parts Manual



A Message to Gravely Parts Manual User

Your Gravely Dealer will be happy to supply any service or advice which may be required to keep your Gravely equipment operating at peak efficiency. He stocks genuine Gravely parts and lubricants, manufactured with the same precision and skill as the original equipment. His factory trained staff is kept well informed on the best methods of servicing Gravely equipment and is ready and able to serve

you. If engine repairs or services are required, they can be obtained from a Gravely Dealer or from an authorized engine manufacturer's service center. If service is required, be prepared to supply the service person with the Model Number and Serial Number of the equipment and engine, as well as a full description of the problem encountered.

Introduction

The information contained herein is intended for use by Gravely Dealers' trained servicemen and serves as a supplement to and reminder of training sessions conducted by Gravely Company. Before you attempt any repair, adjustment or maintenance project, be certain that you have read and fully understand the instructions in your Owner's and Repair Manuals. Understand and follow each Danger, Warning, Caution and all instructions exactly as given. Also be sure that you have all tools, replacement parts and other materials required to complete the project.

A network of Gravely Dealers is maintained in order to assure you of an adequate supply of replacement parts and technical assistance. When replacement parts are required, use only genuine Gravely parts. Failure to do so may result in product malfunction and possible injury to operator and/or bystander.

NOTE: The descriptions and specifications contained in this manual were in effect at the time the manual was approved for printing. Gravely Company reserves the right to discontinue models without notice and without incurring obligation. The equipment described within this manual may not be identified as either standard or optional and the various illustrations may not all be applicable to your particular unit. If you have questions always check with your Gravely Dealer.

NOTE: All references to "Left", "Right", "Front" and "Rear" are given from operators position.

NOTE TO GRAVELY DEALERS: Refer to your current Parts Price List for suggested parts stocking. Service training for dealers is available at the Gravely Service School.

How to Order Replacement Parts

This Parts Manual is arranged for easy identification of genuine Gravely Service parts that are illustrated showing their relationship to one another. Item numbers in the illustrations correspond to item numbers in the first column of the parts list and are followed by the Gravely Part number, Description and Quantity with variations between models and/or serial numbers designated in the part description. S/N 000000> means this serial number and up, with S/N <000000 meaning up to this serial number.

Order parts from your nearest authorized Gravely Dealer. For prompt service when ordering parts, provide the following information.

1. **MODEL AND SERIAL NUMBERS OF EQUIPMENT**
2. **PART NUMBER (not Item Number)**
3. **DESCRIPTION**
4. **QUANTITY REQUIRED**

Contents

Decals	2
Frame	4
Steering Control	6
PTO Clutch Linkage	8
Gear Selector	10
Transmission	12
Fuel and Exhaust System	14
Electrical System	16
Wheel	18

NOTE: Most hardware description are given in decimals. Refer to the following table to find the equivalent in fractions:

.125=	1/8
.188=	3/16
.250=	1/4
.312=	5/16
.375=	3/8
.438=	7/16
.500=	1/2
.562=	9/16
.625=	5/8
.688=	11/16
.750=	3/4
.812=	13/16
.875=	7/8
.938=	15/16

Models

Model 988059

Pro-150, 14 Kawasaki
Serial No. 000101 and up

Model 988060

Pro-150, 12.5 Kawasaki
Serial No. 000101 and up

Model 988069

Pro-150, 14 Kohler
Serial No. 000101 and up

Model 988070

Pro-150, 15 Kohler
Serial No. 000101 and up

Model 988074

Pro-150, 12.5 Kohler
Serial No. 000101 and up

Model 988301

Pro-150, Export, 12.5 Kawasaki
Serial No. 000101 and up

This manual covers the models listed. Specific Model and Serial Numbers of your unit and attachment are on a label on the unit. Record these numbers in the space provided and use them

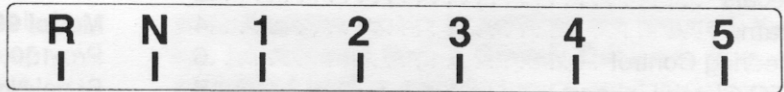
Model Number	_____
Serial Number	_____
Engine Number	_____
Serial Number	_____

Decals

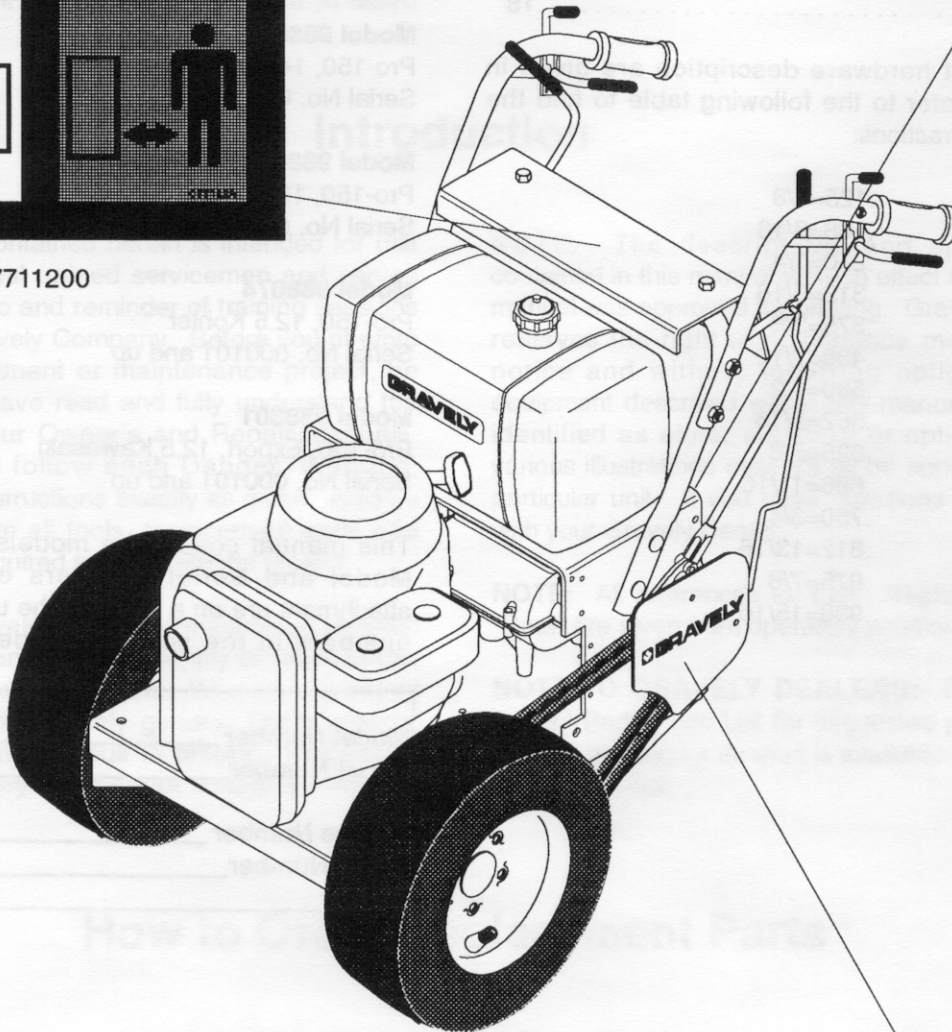
Models 988059,060,069,070,074,301



07711200



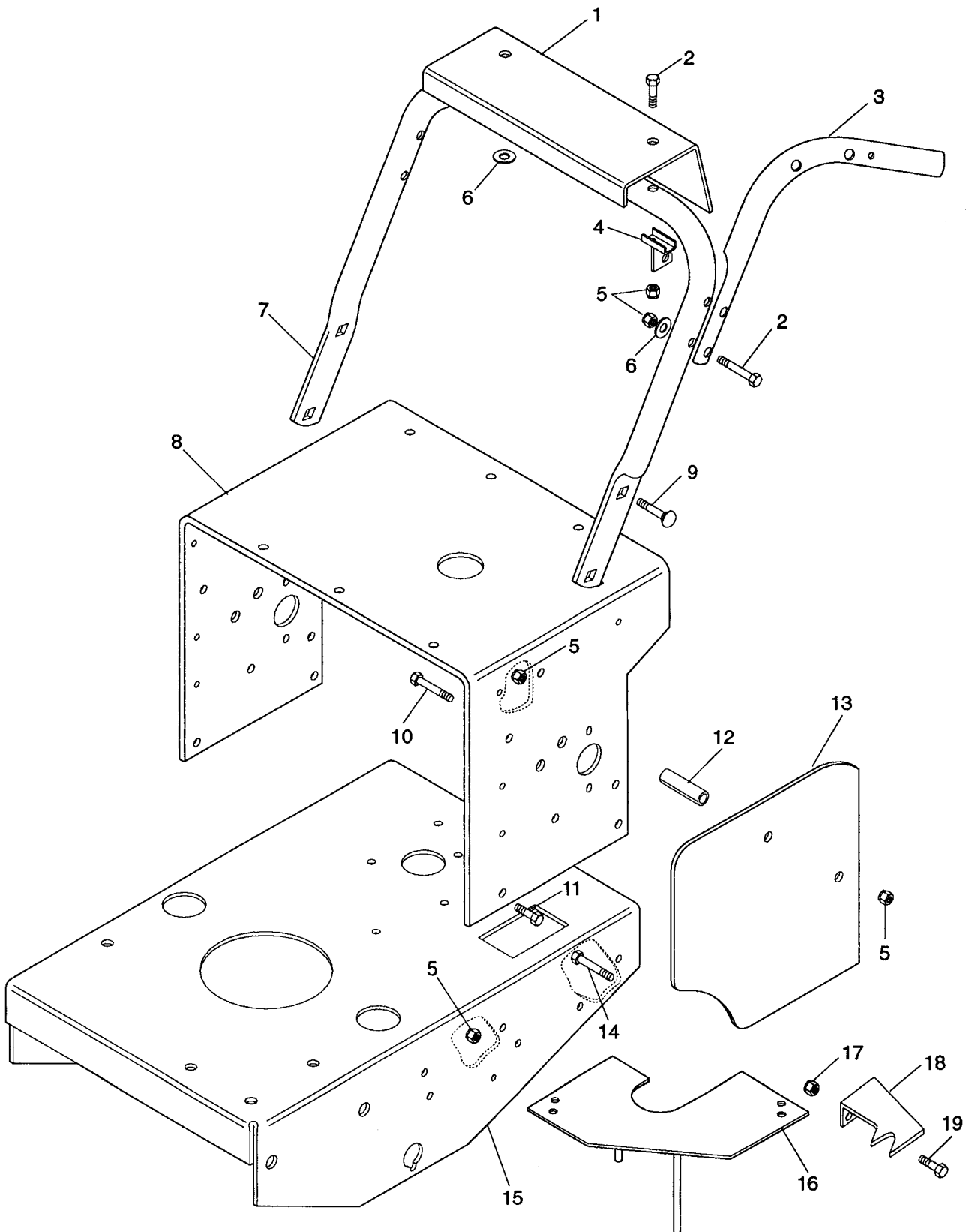
07874900



07874900

Frame

Models 988059,060,069,070,074,301



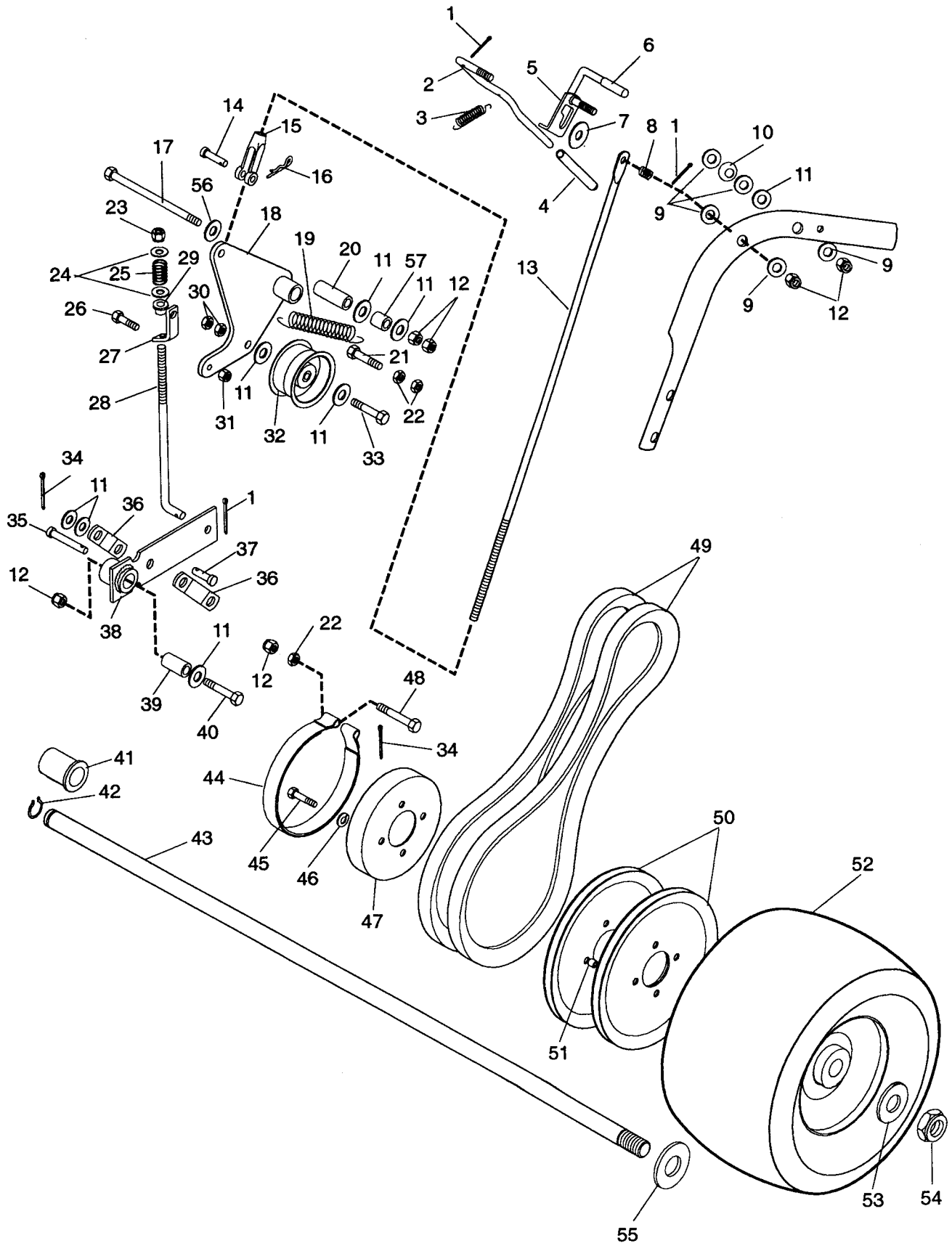
Frame

Models 988059,060,069,070,074,301

ITEM NO.	OLD PART NO.	NEW PART NO.	DESCRIPTION	QTY
1	049275	08834800	Panel, Silk Screened	1
2	180130	05914700	Bolt-Hex .38-16 x 2.00 Grade 5	6
3	052622	08847500	Handlebar Left Hand	1
	052623	08847600	Handlebar Right Hand	1
4	088734	08873400	PTO Lever Mounting Bracket	1
5	456004	06513500	Nut-Locking-Nylon .375-16 Grade 2	14
6	120394	06404300	Washer-Flat-Steel .406 x .812 x .065	5
7	088735	08873500	Lower Handlebar, Pro 100	1
8	088721	08872100	Pro-100 Top Frame	1
9	120915	06202900	Bolt-Round Head Square Neck .38-16 x 1.0	4
10	189304	05938800	Bolt-Hex .38-16 x 4.00	2
11	180122	05914500	Bolt-Hex .38-16 x 1.00 Grade 5	2
12	088753	08875300	Bushing, Spacer, 3.25 x 3/8 ID x 5/8 OD	2
13	088737	08873700	Guard, Drive Pro-100 Side Cover	1
14	180125	05934900	Bolt-Hex .38-16 x 1.38	2
15	088720	08872000	Pro-100 Main Frame	1
16	088739	08873900	Belt Brake Finger-Deck Clutch	1
17	065062	06506200	Nut-Locking-Nylon .312-18 Grade 2	4
18	088489	08848900	Cleaner, Pulley Groove Left Hand	1
	088490	08849000	Cleaner, Pulley Groove Right Hand	1
19	059321	05932100	Bolt-Hex .31-18 x .625	4
N/S	078749	07874900	Decal Set, Pro-150	1
N/S	077112	07711200	Decal Warning Foreign (Euro Models Only)	1

Steering Control

Models 988059,060,069,070,074,301



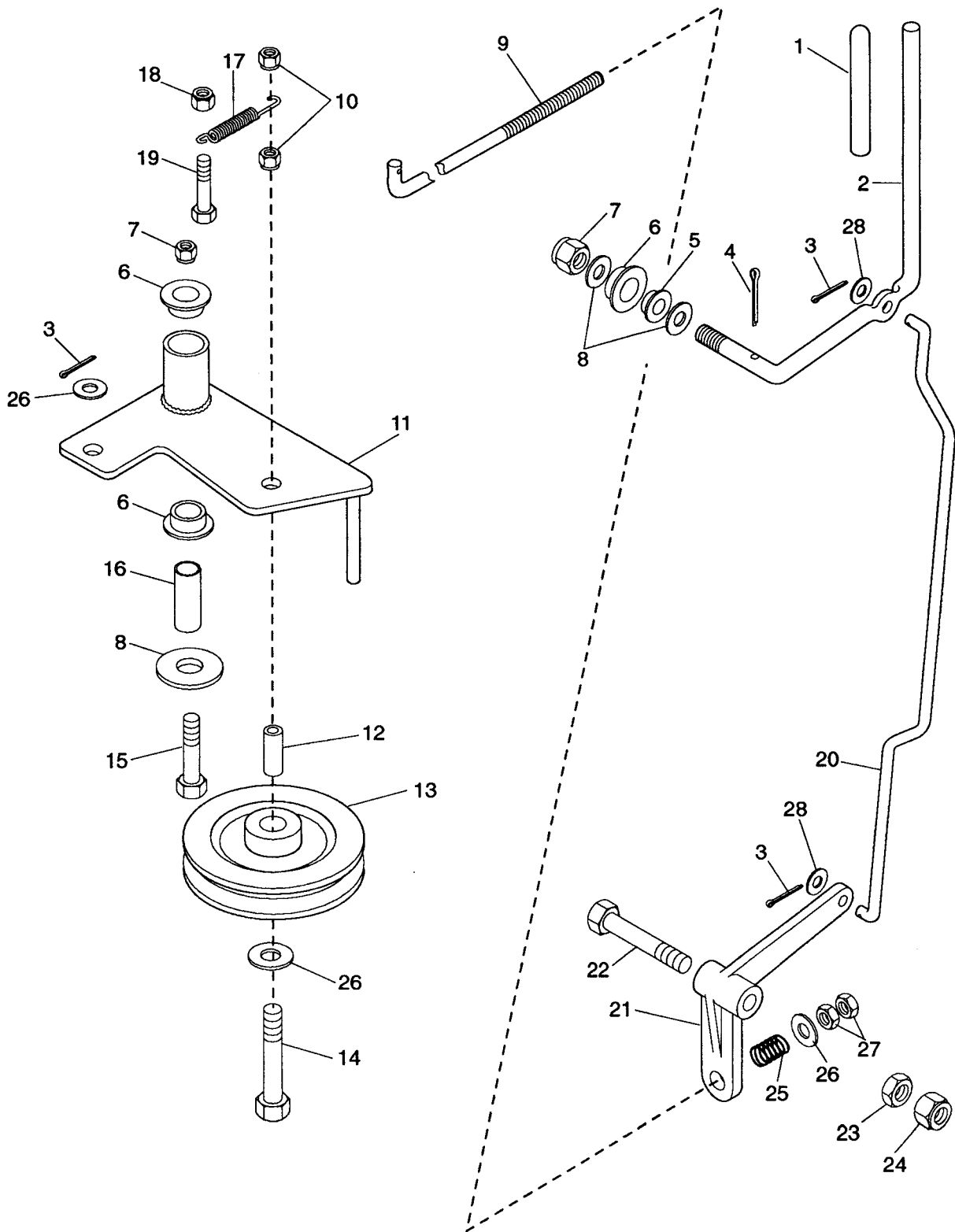
Steering Control

Models 988059,060,069,070,074,301

ITEM NO.	OLD PART NO.	NEW PART NO.	DESCRIPTION	QTY
1	121222	06700100	Pin-Cotter .09 x .75	6
2	052624	06847700	Lever, Hand Control	2
3	043446	06339300	Spring-Tension .041 x .500 x 1.750	2
4	043197	07528300	Grip, Hand Clutch Lever	2
5	042990	06820600	Weldment, Clutch-Brake Lock	2
6	043192	07503800	Tip-Brake Lock Lever	2
7	446447	06430900	Washer-Flat-Steel .438 x 1.375 x .083	2
8	043193	06338800	Spring-Compression .045 x .600 x .750	2
9	020775	06433600	Washer-Flat-Nylon .375 x .75 x .060	10
10	029024	02902400	Spring Washer	2
11	120394	06404300	Washer-Flat-Steel .406 x .812 x .065	16
12	456004	06513500	Nut-Locking-Nylon .375-16 Grade 2	12
13	049280	06878200	Rod, Clutch Actuating	2
14	068092	06809200	Pin-Clevis .372 x 1.25	2
15	018380	06800400	Clevis, .38-24 Adjustable	2
16	036185	06702000	Pin-Hair Internal .08 x .18 x 1.18	2
17	059388	05938800	Bolt-Hex .38-16 x 4.00	2
18	049019	06631200	Weldment, Wheel Clutch Arm	2
19	034400	06332600	Spring-Tension .069 x .62 x 3.50	2
20	049022	06631500	Bushing, Sleeve .385 x .610 x 1.80	2
21	180126	05915100	Bolt-Hex .38-16 x 1.50 Grade 5	2
22	120377	06501800	Nut-Hex .375-16 Grade 2	6
23	065062	06506200	Nut-Locking-Nylon .312-18 Grade 2	2
24	064123	06412300	Washer-Flat-Steel .344 x .688 x .065	4
25	011779	06327000	Spring-Compression .125 x .78 x 1.00	2
26	180020	05906200	Bolt-Hex .25-20 x .75 Grade 5	2
27	088726	06872600	Left-Bracket, Pro Brake Link	2
28	049282	06876300	Rod, Brake	2
29	045789	05517500	Bushing-Flange .320 x .620 x .312	2
30	413534	06524800	Nut-Locking-Center .625-10 Grade 2	4
31	419454	06506600	Nut-Locking-Nylon .250-20 Grade 2	2
32	048870	07318400	Sheave 3.25 x 1.25	2
33	059243	05924300	Bolt-Hex .38-16 x 2.25 Grade 5	2
34	177923	06702400	Pin-Cotter .12 x .75	4
35	011718	06809200	Pin Clevis .372 x 1.25	2
36	049026	06631900	Link, Brake Arm	4
37	018417	06609600	Pin-Clevis .38 x .594	2
38	049023	06631800	Weldment, Brake Arm	2
39	049027	06833400	Bushing, Sleeve .391 x .622 x .950	2
40	059147	05914700	Bolt-Hex .38-16 x 2.00 Grade 5	2
41	049969	05517900	Bushing-Flange 1.010 x 1.38 x 1.4 x 1.65	2
42	017980	06712300	Ring-Retaining-External .906 x .078	1
43	088752	06875200	Axle Shaft, Pro-150	1
44	088806	06880600	Assembly, Brake Band, Pro	2
45	180083	05914000	Bolt-Hex .31-18 x 1.50 Grade 5	8
46	120214	06303600	Washer-Lock .313 x .078	8
47	049015	06663900	Drum, Brake	2
48	180130	05914700	Bolt-Hex .38-16 x 2.00 Grade 5	2
49	072258	07225800	Drive Belt, Pro 100, Matched Pair	2
50	049033	07319700	Pulley-V 9.00 x 3.75	4
51	048868	06809500	Bushing, Sleeve .385 x .625 x .475	8
52	071373	07137300	Assembly, Wheel, 13 x 6.00-6	2
53	019340	05421600	Washer-Hardened-Thrust 1.002 x 1.552 x .030	1
54	065203	06520300	Nut-Locking-Jam-Nylon .75-1.0	1
55	064265	06426500	Washer-Thrust 1.55 x 1.002 x .093	A/R
56	064067	06406700	Washer-Flat-Steel .390 x .875 x .18	2
57	043927	06563700	Bushing	2

PTO Clutch Linkage

Models 988059,060,069,070,074,301



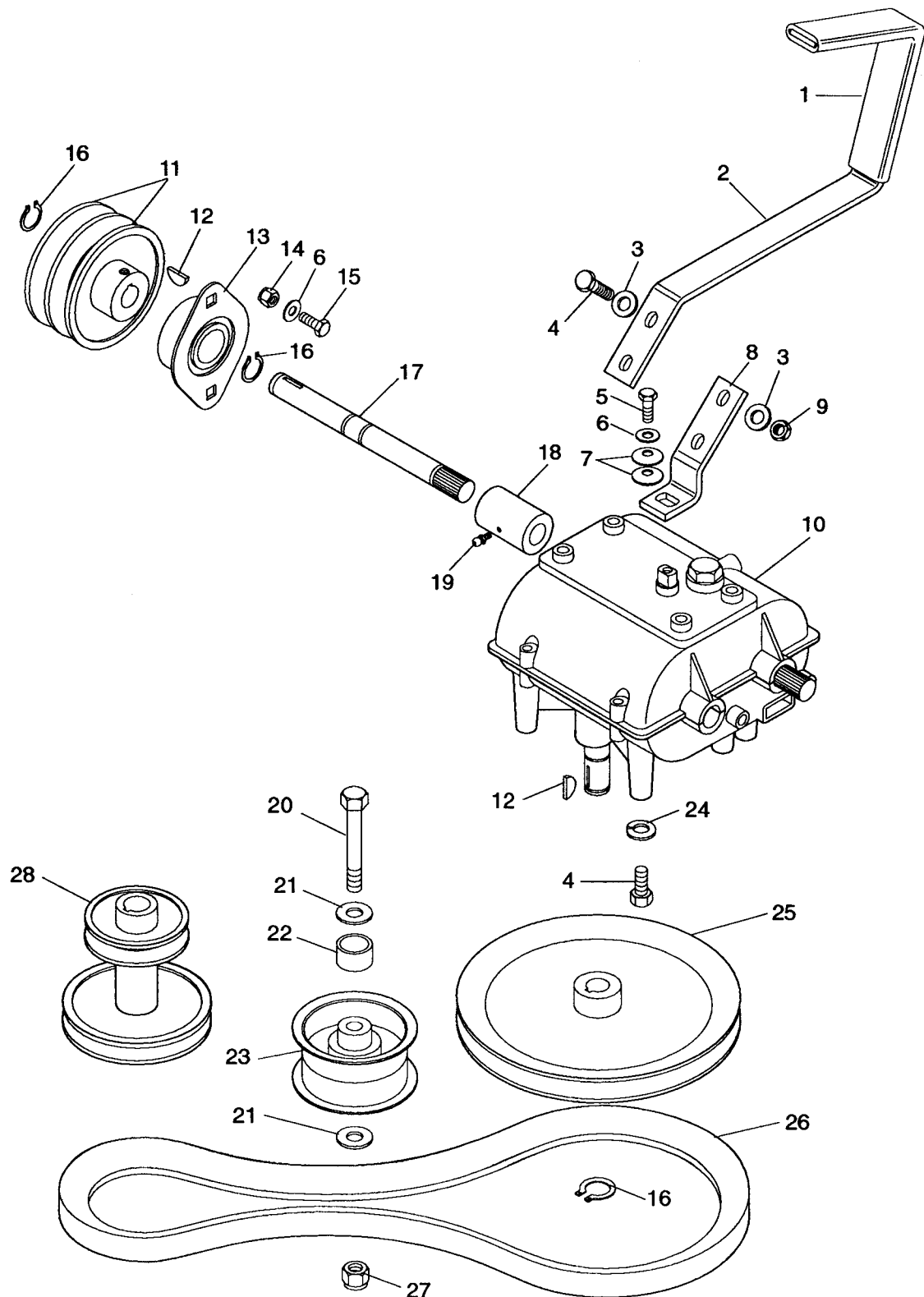
PTO Clutch Linkage

Models 988059,060,069,070,074,301

ITEM NO.	OLD PART NO.	NEW PART NO.	DESCRIPTION	QTY
1	043196	07528200	Grip, PTO Lever	1
2	049291	08878400	Lever, PTO Actuating	1
3	121222	06700100	Pin-Cotter .09 x .75	3
4	137253	06705800	Pin-Cotter .188 x 1.625	1
5	034738	05521100	Bushing-Flange .515 x .750 x .745 x 1.00	1
6	010174	05518400	Bushing-Flange .762 x 1.0 x .580 x 1.48	3
7	435507	06512900	Nut-Locking-Nylon .50-13 Grade 5	3
8	415543	06430200	Washer-Flat-Steel .531 x 1.250 x .100	3
9	088730	08873000	Assembly, Tire/Wheel, Pro-100	1
10	456004	06513500	Nut-Locking-Nylon .375-16 Grade 2	2
11	088723	08872300	Declutch Arm-Pro PTO	1
12	088741	08874100	Spacer .391 ID x .75 OD x 1.25	1
13	052062	07320700	Idler-Pulley-Flat 3.25 x .625	1
14	059208	05920800	Bolt-Hex .38-16 x 3.50 Grade 5	1
15	059167	05916700	Bolt-Hex .50-13 x 3.50 Grade 5	1
16	088724	08872400	Bushing for Declutch Arm Pivot	1
17	083295	08329500	Spring-Tension .095 x .85 x 4.38	1
18	419455	06506200	Nut-Locking-Nylon .312-18 Grade 2	2
19	059134	05913400	Bolt-Hex .31-18 x 1.25 Grade 5	1
20	088733	08873300	PTO Lever Link Rod, Pro 100	1
21	049271	08834400	Lever, PTO Clutch	1
22	180185	05914400	Bolt-Hex .50-13 x 2.50 Grade 5	1
23	120378	06502100	Nut .50-13	1
24	414074	06525800	Nut-Locking .50-13	1
25	011779	08327000	Spring-Compression .125 x .78 x 1.00	1
26	120394	06404300	Washer-Flat-Steel .406 x .812 x .065	3
27	120377	06501800	Nut-Hex .375-16 Grade 2	2
28	064123	06412300	Washer-Flat-Steel .344 x .688 x .065	2

Gear Selector

Models 988059,060,069,070,074,301



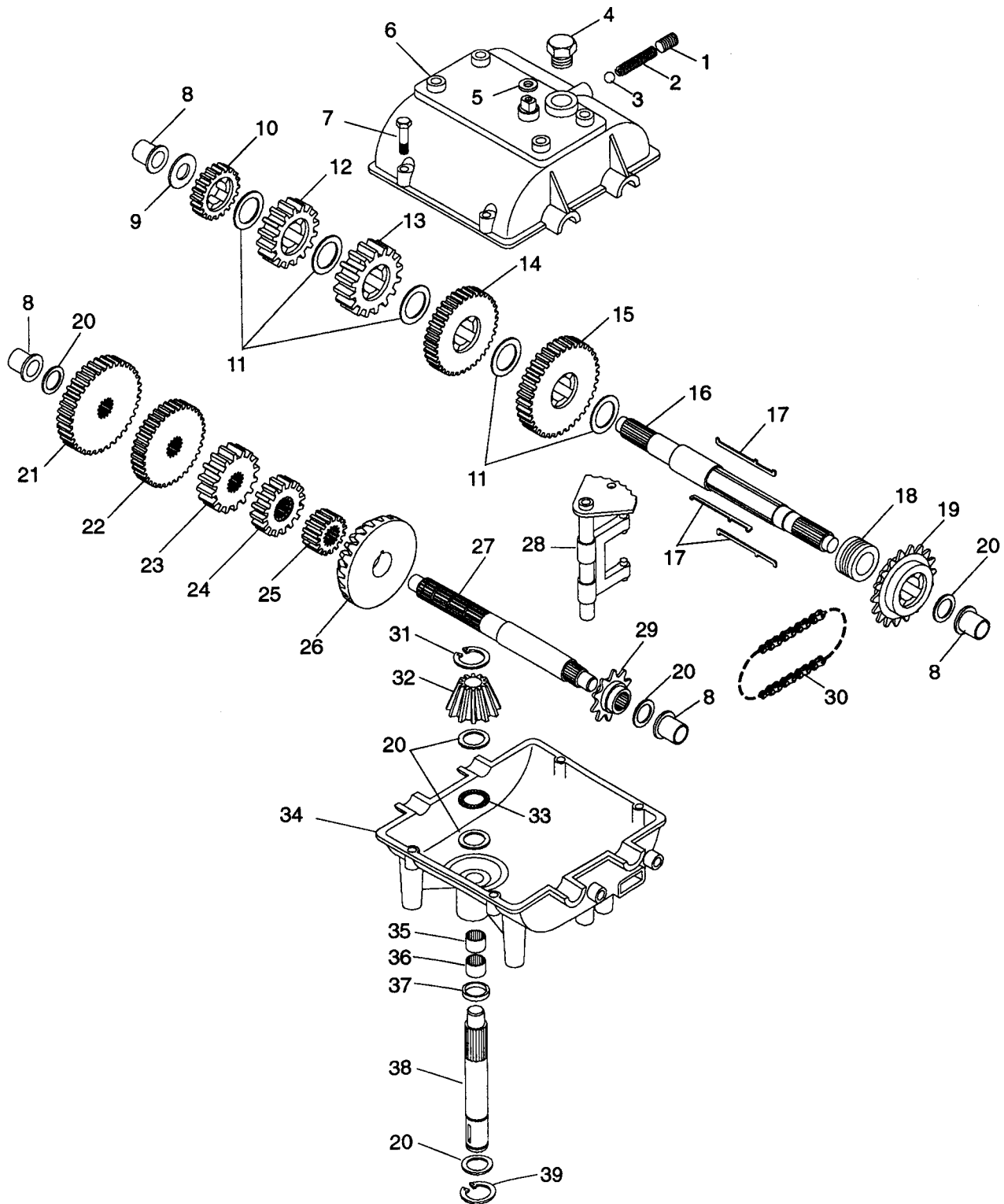
Gear Selector

Models 988059,060,069,070,074,301

ITEM NO.	OLD PART NO.	NEW PART NO.	DESCRIPTION	QTY
1	045550	07530700	Grip	1
2	048997	08830500	Lever, Transmission Shift	1
3	120393	06429200	Washer-Flat-Steel .344 x .688 x .065	4
4	180079	05918100	Bolt-Hex .31-18 x 1.00 Grade 5	6
5	050986	05943800	Bolt-Hex .25-28 x .75 Grade 8	1
6	064127	06412700	Washer-Flat-Steel .281 x .620 x .065	5
7	050950	06435000	Washer, Belleville	2
8	048996	08830400	Arm, Transmission Shift	1
9	419455	06506200	Nut-Locking-Nylon .312-18 Grade 2	2
10	049011	08869900	Transmission, 5-Speed Pro 32	1
11	088725	08872500	Drive Sheave (Upper) - Pro-100	2
12	124549	06608700	Key, Woodruff .19 x .75	3
13	049277	05426400	Bearing-Flange .625 x 1.875 x .797	2
14	419454	06506600	Nut-Locking-Nylon .250 -20 Grade 2	4
15	180020	05908200	Bolt-Hex .25-20 x .75 Grade 5	4
16	015338	05711900	Ring-Retaining-External .579 x .93	5
17	088805	08880500	Half Shaft, Transmission, Pro-150	2
18	049013	08870100	Coupler, Transmission Shaft	2
19	411027	07012600	Fitting-Lube .25-28 x .256	2
20	180132	05924300	Bolt-Hex .38-16 x 2.25 Grade 5	1
21	120394	06404300	Washer-Flat-Steel .406 x .812 x .065	2
22	049708	08828000	Spacer, .625 x .385 x .55	1
23	052062	07320700	Idler-Pulley Flat 3.25 x .625	1
24	120214	06303600	Washer-Lock .313 x .078	4
25	048995	07316900	Pulley-V 7.50 x .63	1
26	049270	07222700	V-Belt A-Section 14.9 x 33/64	1
27	056004	06513500	Nut-Locking-Nylon .375-16 Grade 2	1
28	088722	08872200	Crank Sheave-Pro	1

Transmission

Models 988059,060,069,070,074,301



Transmission

Models 988059,060,069,070,074,301

Transmission Model 700-032

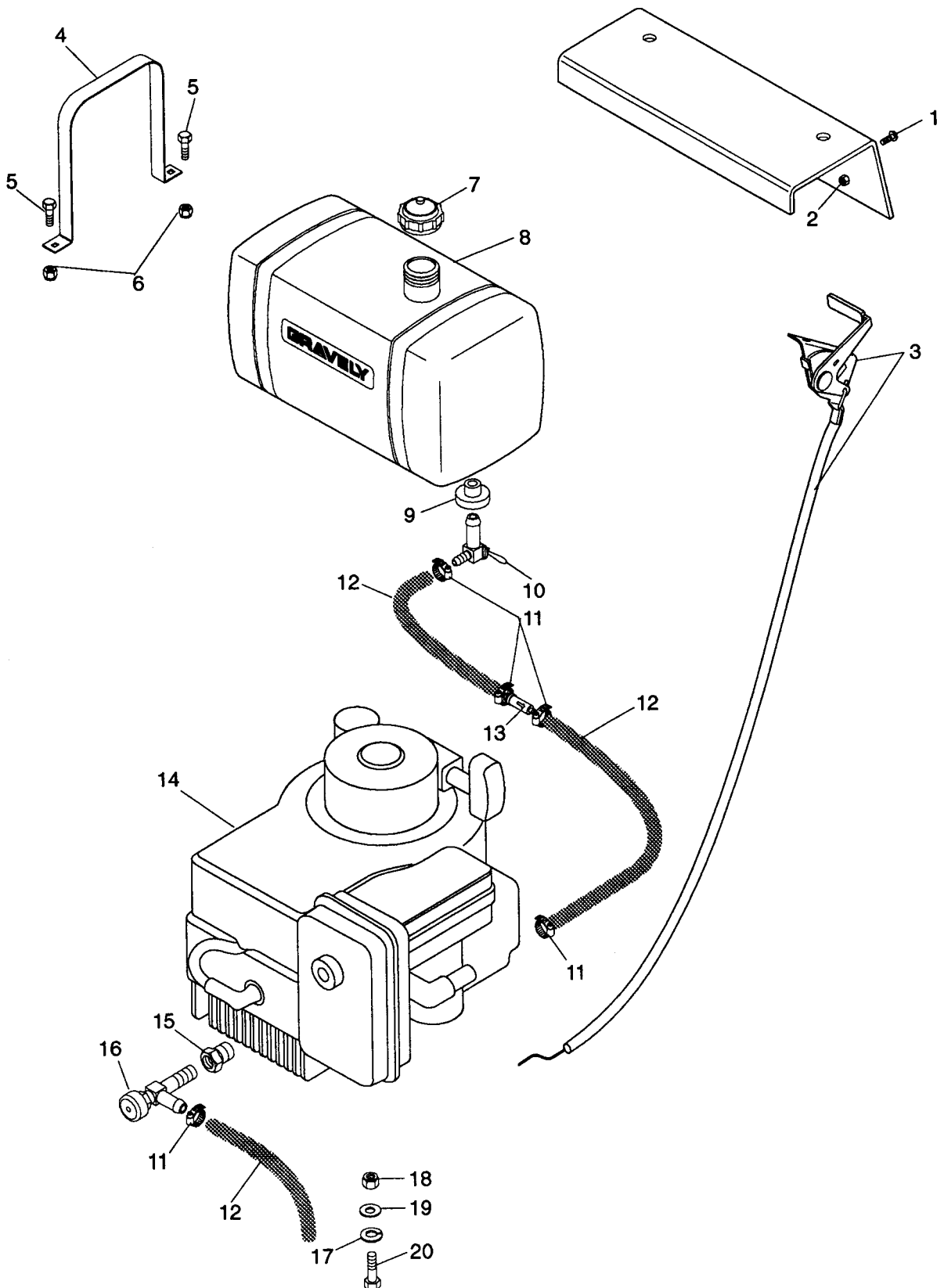
ITEM NO.	OLD PART NO.	NEW PART NO.	DESCRIPTION	QTY
1	792078		Screw, Set 3/8-16 x 3/8	1
2	792079		Spring	1
3	792077		Ball, Steel 5/16	1
4	792074		Plug, Threaded	1
5	788069		Seal, Square Cut	1
6	772083		Cover, Transmission	1
7	792073		Screw, HHD Taptite, 1/4-20 x 1.25	6
8	780105A		Bushing, Flanged	4
9	780139		Washer, Thrust	1
10	778250		Gear, Spur (27 Teeth)	1
11	780108		Washer, Thrust	5
12	778124A		Gear, Spur (30 Teeth)	1
13	778239		Gear, Spur (32 Teeth)	1
14	778125		Gear, Spur (35 Teeth)	1
15	778146A		Gear, Spur (37 Teeth)	1
16	776217		Shaft, Output & Brake	1
17	792089A		Key	4
18	784266		Collar, Shift	1
19	786083		Sprocket (18 Teeth)	1
20	780072		Washer, Thrust	6
21	778249		Gear, Spur (23 Teeth)	1
22	778126A		Gear, Spur (20 Teeth)	1
23	778240		Gear, Spur (18 Teeth)	1
24	778151		Gear, Spur (15 Teeth)	1
25	778145		Gear, Spur (12 Teeth)	1
26	778154		Gear, Bevel (42 Teeth)	1
27	776134		Shaft, Counter	1
28	784267		Rod & Fork Assembly, Shift	1
29	786082		Sprocket (9 Teeth)	1
30	786081		Chain, Roller (No. 41 Chain, 24 Links)	1
31	788040		Ring, Retaining	1
32	778176		Bevel Pinion, Input	1
33	780071		Bearing, Thrust	1
34	770061		Case, Transmission	1
35	780086		Bearing, Needle	1
36	780142		Bearing, Needle	1
37	792001		O-Ring	1
38	776135		Shaft, Input	1
39	792035		Ring, Retaining	1

TECUMSEH PRODUCTS COMPANY
Engine and Gear Service Division
Grafton, Wisconsin

NOTE: Part Numbers listed on this page are Tecumseh part numbers and are to be ordered or purchased from the nearest Tecumseh Service Outlet, which may be found in the Yellow Pages of the Telephone Directory.

Fuel and Exhaust System

Models 988059,060,069,070,074,301



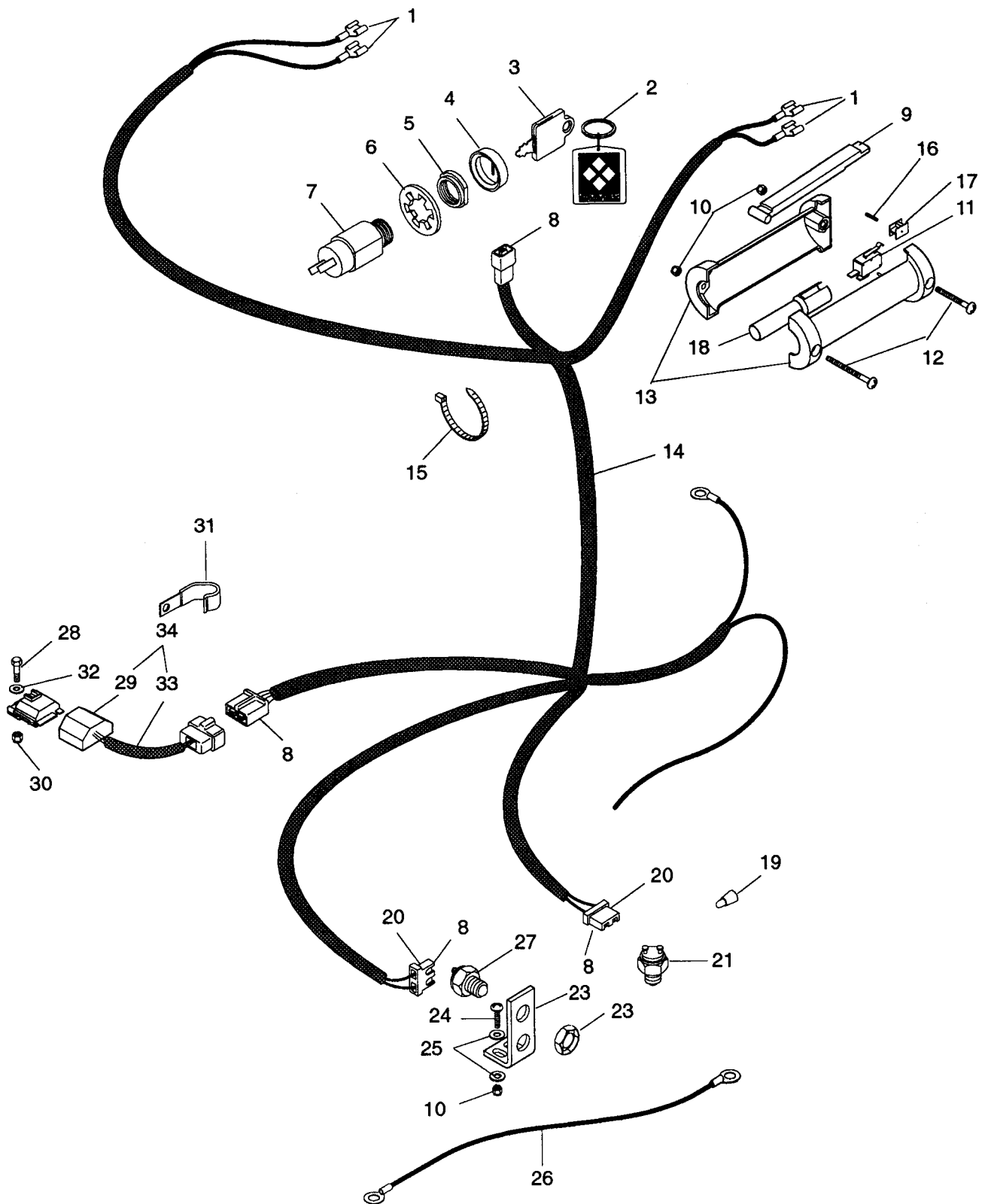
Fuel and Exhaust System

Models 988059,060,069,070,074,301

ITEM NO.	OLD PART NO.	NEW PART NO.	DESCRIPTION	QTY
1	160046	06113300	Screw-Machine 10-32 x .50	2
2	411893	06521700	Nut-Locking 10-32	2
3	088731	08873100	Assembly, Throttle Control/Cable	1
4	091121	09112100	Tank Strap for 4.5 G Fuel Tank	2
5	180020	05908200	Bolt-Hex .25-20 x .75 Grade 5	4
6	419454	06506600	Nut-Locking-Nylon .250-20 Grade 2	4
7	048856	07533400	Cap, Fuel Tank	1
8	091120	09112000	Fuel Tank, 4.5 Gallon	1
9	047613	05520000	Bushing, Flange .375 x 1.06 x .625	1
10	049284	08835100	Valve, Ball Shut-Off	1
11	032045	06924300	Hose Clamp	5
12	021134	00924300	Gas Line-Bulk	3 ft.
13	040742	08811700	Filter, Fuel	1
14	044350	08235000	Engine, Kawasaki	1
	082375	08237500	Engine-14 HP Kawasaki	1
	048621	08236900	Engine, 14 HP Kohler, PS-141	1
	082446	08244600	Engine, 12.5 HP Command	1
	082454	08245400	Engine, 15 HP Kohler Command	1
15	041831	08757700	Adapter, Oil Drain	1
16	035329	03493200	Cock, Oil Drain	1
17	120214	06303600	Washer-Lock .313 x .078	4
18	419455	06506200	Nut-Locking-Nylon .312-18 Grade 2	4
19	120393	06429200	Washer-Flat-Steel .344 x .688 x .065	4
20	021914	05941500	Bolt-Hex M8 x 1.25 x 30 MM	4
N/S	088812	08881200	Guard, Muffler, 12.5 Kawasaki, Europro (Euro Models Only)	1
N/S	088813	08881300	Guard, Muffler, 14 Kawasaki, Europro (Euro Models Only)	1

Electrical System

Models 988059,060,069,070,074,301



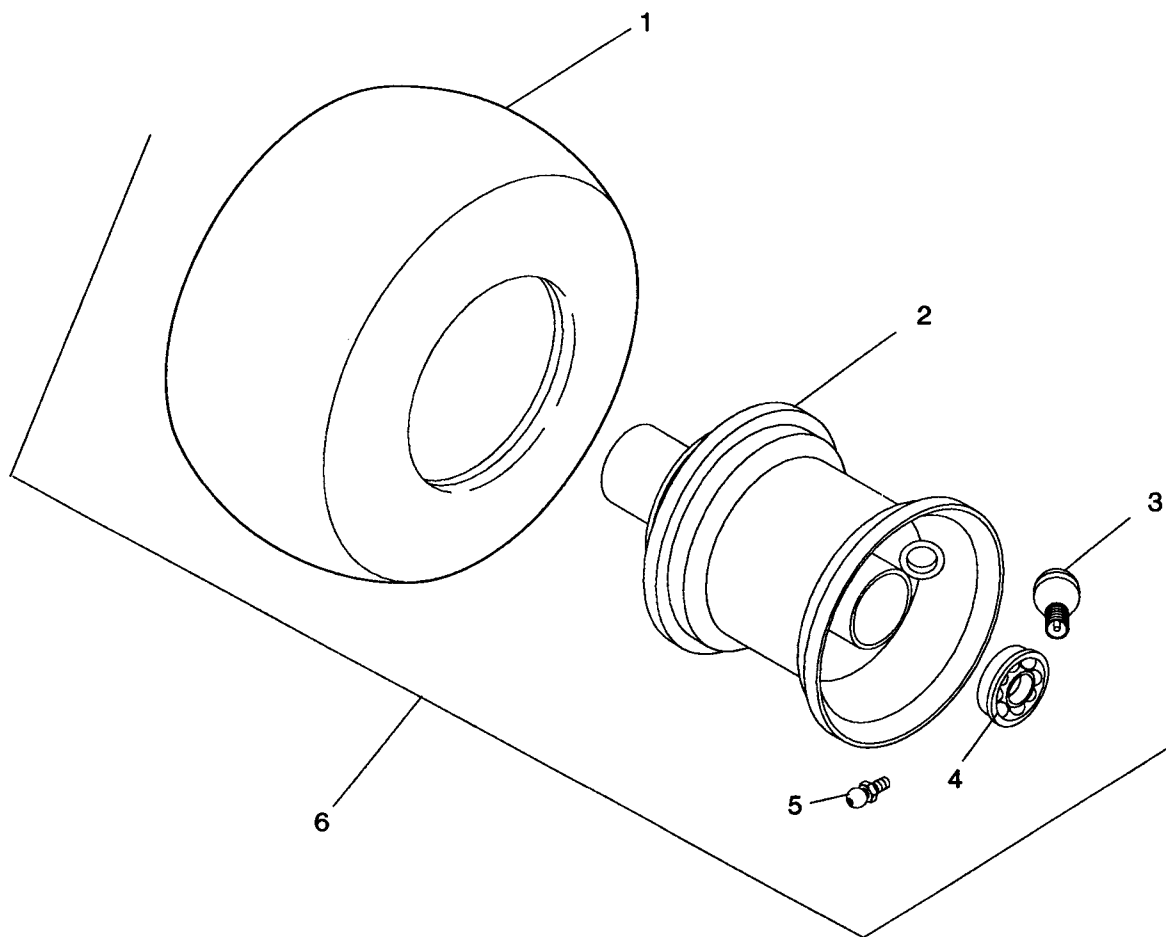
Electrical System

Models 988059,060,069,070,074,301

ITEM NO.	OLD PART NO.	NEW PART NO.	DESCRIPTION	QTY
1	046988	08828400	Terminal, Female	4
2	045842	03490000	Key Chain	1
3	045488	03489900	Ignition Switch Key	2
4	045490	07517700	Cap-Ignition Switch	1
5	045497	06517300	Nut-Panel .625-32	1
6	018586	06306400	Washer-Lock .625	1
7	024565	02456500	Key Switch Assembly	1
8	038059	08540000	Terminal	8
9	046822	08602200	Lever	2
10	190254	06506500	Nut-Locking 10-24	6
11	088283	08828300	Switch	2
12	159967	06113200	Screw-Machine 10-24 x 1.50	4
13	088702	08870200	Handle, Left Hand & Right Hand	2
14	088516	08851600	Harness, Wiring Pro Recoil	1
15	041634	07519900	Tie Wrap, Black	10
16	058081	05808100	Pin-Roll .094 x .750	2
17	088551	08855100	Holder, Switch	2
18	088531	08853100	Insert, Handlebar	2
19	011763	07016700	Nut-Connector	1
20	042176	08550000	Connector, 2-Wire Switch	2
21	034640	08803700	Switch-Neutral Start	2
22	034637	08803600	Bracket, Interlock Switch	1
23	107354	07015100	Nut-Stamped .56-18	1
24	059207	05920700	Bolt-Hex 10-24 x .75 Grade 2	2
25	131015	06429800	Washer-Flat-Steel .188 x .438 x .049	4
26	042529	08818400	Wire, Ground	2
27	020916	02913100	Switch-Neutral Start	1
28	180020	05908200	Bolt-Hex .25-20 x .75 Grade 5	1
29	088857	08885700	Module	1
30	419454	06506600	Nut-Locking-Nylon .250-20 Grade 2	1
31	069160	06916000	J-Clamp	1
32	064123	06412300	Washer-Flat-Steel .344 x .688 x .065	1
33	088856	08885600	Adapter Harness (059,060,301)	1
	088855	08885500	Adapter Harness, Interlock (069,070,074)	1
34	588009	58800900	Kit, Interlock Module (059,060,301)	1
	588011	58801100	Kit, Interlock Module, Recoil (069,070,074)	1

Wheel

Models 988059,060,069,070,074,301



ITEM NO.	OLD PART NO.	NEW PART NO.	DESCRIPTION	QTY
1	071379	07137900	Tire, 13 x 6.00-6	1
2	050400	07134100	Rim-Assembly 4.5 x 3.75	1
3	011191	07520000	Valve Stem Assembly	1
4	050398	21370700	Radial Bearing	2
5	411027	07012600	Fitting-Lube .25-28 x .256	1
6	071373	07137300	Assembly, Wheel, 13 x 6.00-6, Pro	2