

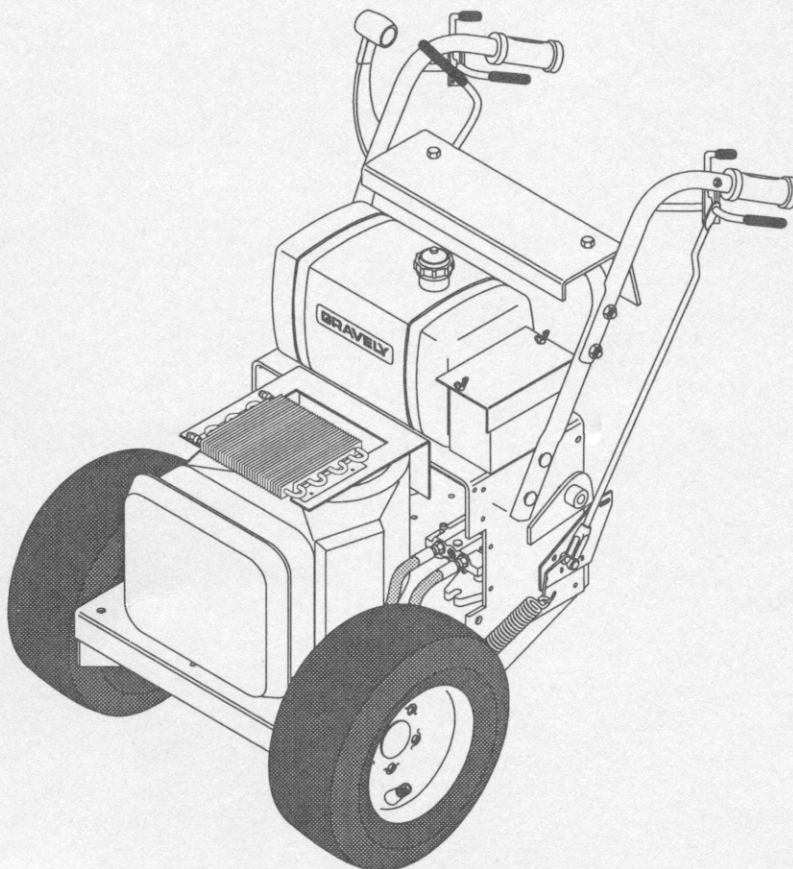
⚠ SAFETY MESSAGE ⚠

The product for which you have requested information or replacement parts is not a current product. The replacement models incorporate product designs, safety features, safety instructions or warnings which represent the latest "State Of The Art" developments. For your safety and those around you please contact your nearest Ariens/Gravely Dealer for a demonstration of the current product safety provisions and features.

GRAVELY®

PRO 300

Parts Manual



**988
SERIES**

MODELS

019 – PRO 300
064 – PRO 300
065 – PRO 300
073 – PRO 300
076 – PRO 300
304 – PRO 300

A Message to Gravely Parts Manual User

Your Gravely Dealer will be happy to supply any service or advice which may be required to keep your Gravely equipment operating at peak efficiency. He stocks genuine Gravely parts and lubricants, manufactured with the same precision and skill as the original equipment. His factory trained staff is kept well informed on the best methods of servicing Gravely equipment and is ready and able to serve

you. If engine repairs or services are required, they can be obtained from a Gravely Dealer or from an authorized engine manufacturer's service center. If service is required, be prepared to supply the service person with the Model Number and Serial Number of the equipment and engine, as well as a full description of the problem encountered.

Introduction

The information contained herein is intended for use by Gravely Dealer's trained servicemen and serves as a supplement to and reminder of training sessions conducted by Gravely. Before you attempt any repair, adjustment or maintenance project, be certain that you have read and fully understand the instructions in your Owner's and Repair Manuals. Understand and follow each Danger, Warning, Caution and all instructions exactly as given. Also be sure that you have all tools, replacement parts and other materials required to complete the project.

A network of Gravely Dealers is maintained in order to assure you of an adequate supply of replacement parts and technical assistance. When replacement parts are required, use only genuine Gravely parts. Failure to do so may result in product malfunction and possible injury to operator and/or bystander.

NOTE: The descriptions and specifications contained in this manual were in effect at the time the manual was approved for printing. Gravely reserves the right to discontinue models without notice and without incurring obligation. The equipment described within this manual may not be identified as either standard or optional and the various illustrations may not all be applicable to your particular unit. If you have questions, always check with your Gravely Dealer.

NOTE: All references to "Left", "Right", "Front" and "Rear" are given from operators position.

NOTE TO GRAVELY DEALERS: Refer to your current Parts Price List for suggested parts stocking. Service training for dealers is available at the Gravely Service School.

How to Order Replacement Parts

This Parts Manual is arranged for easy identification of genuine Gravely Service parts that are illustrated showing their relationship to one another. Item numbers in the illustrations correspond to item numbers in the first column of the parts list and are followed by the Gravely Part Number, Description and Quantity with variations between models and/or serial numbers designated in the part description. S/N 000000> means this serial number and up, with S/N <000000 meaning up to this serial number.

Order parts from your nearest authorized Gravely Dealer. For prompt service when ordering parts, provide the following information.

1. **MODEL AND SERIAL NUMBERS OF EQUIPMENT**
2. **PART NUMBER (not Item Number)**
3. **DESCRIPTION**
4. **QUANTITY REQUIRED**

Contents

Decals	2
Frame	4
Steering Control	6
Wheel Drive	8
PTO Clutch Linkage	10
Traction Clutch Linkage	12
Gear Selector	14
Hydraulic System	16
Fuel and Exhaust System - 14 and 16 H.P.	18
Fuel and Exhaust System - 18 H.P.	20
Electrical System - 14 H.P. Unit	22
Electrical System - 16 and 18 H.P. Units	24
Wheel	26

This manual covers the models listed. Specific Model and Serial Numbers of your unit and attachment are on a label on the unit. Record these numbers in the space provided and use them whenever parts or service are required.

NOTE: Most hardware descriptions are given in decimals. Refer to the following table to find the equivalent in fractions:

.125=	1/8
.188=	3/16
.250=	1/4
.312=	5/16
.375=	3/8
.438=	7/16
.500=	1/2
.562=	9/16
.625=	5/8
.688=	11/16
.750=	3/4
.812=	13/16
.875=	7/8
.938=	15/16

Models

Model 988019

PRO-300 16 H.P. Briggs & Stratton Vanguard
Serial No. 000101 and up

Model 988064

PRO-300 18 H.P. Kohler Magnum
Serial No. 000101 and up

Model 988065

PRO-300 14 H.P. Kawasaki OHV
Serial No. 000101 and up

Model 988073

PRO-300 18 H.P. Kohler Command
Serial No. 000101 and up

Model 988076

PRO-300 20 HP Kohler Command
Serial No. 000101 and up

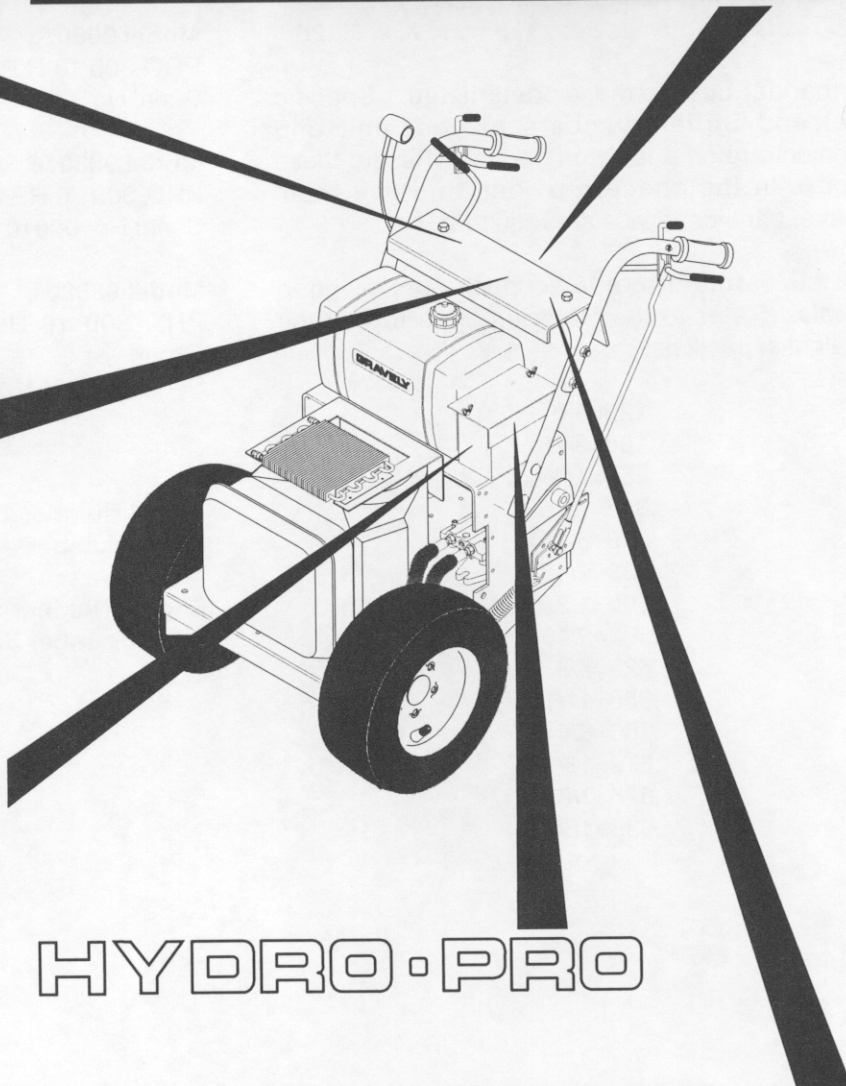
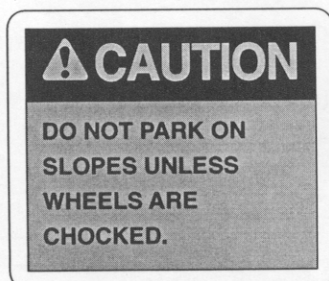
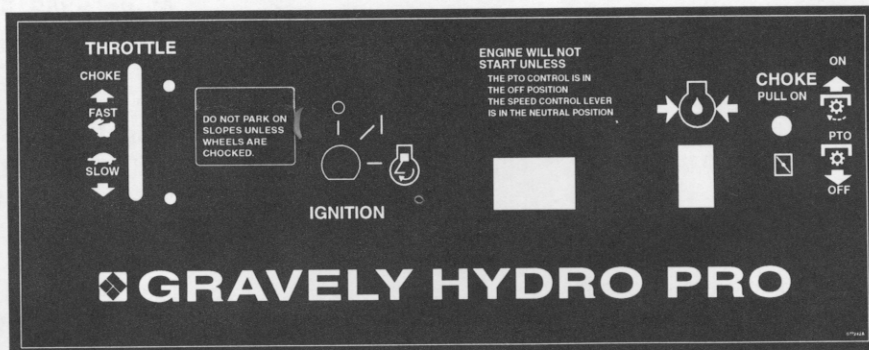
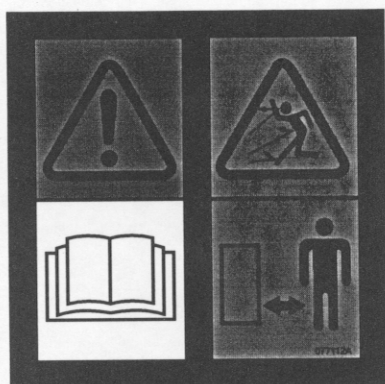
Model 988304

PRO-300 16 H.P. Briggs & Stratton Vanguard -
Export
Serial No. 000101 and up

Model Number _____
Serial Number _____

Engine Number _____
Serial Number _____

Decals



HYDRO-PRO

PRO-300 MAINTENANCE INSTRUCTIONS
SEE OPERATOR'S MANUAL FOR FULL INSTRUCTIONS

ENGINE: CHECK OIL DAILY. CHANGE OIL AND FILTER EVERY 100 HOURS WITH SAE 10W30 CD. REPLACE FUEL FILTER EVERY 300 HOURS. KEEP ENGINE AND COOLING FINS CLEAN.

AIR CLEANER: CLEAN EVERY 50 HOURS. REPLACE ELEMENT WHEN CLOGGED OR EVERY 300 HOURS.

TRANSMISSION: CHECK OIL LEVEL DAILY OR AT ANY SIGN OF LEAKAGE. FILL RESERVOIR WITH SAE 20W50 OIL. CHANGE TRANSMISSION OIL EVERY 500 HOURS. KEEP TRANSMISSION COOLING FINS CLEAN. CHECK BELTS EVERY 25 HOURS.

REF.	LUBRICATION	QTY.	DESCRIPTION-LOCATION	INTERVAL
				Daily 25 Hrs.
1	GREASE	2-3	MOWER SPINDLE	•
* 2	GREASE	2	PIVOT PIN	•
3	GREASE	2	CASTER PIVOT	•
4	GREASE	2	WHEEL BEARING	•
5	GREASE	2	FLANGE BUSHING	•
	OIL		ALL PIVOT POINTS AND PIN CONNECTIONS	•

* FLOATING 50" MOWER ONLY

TIRE PRESSURE: FRONT: 35-40 PSI (241-276 kN/m²)
REAR: 12-15 PSI (83-103 kN/m²)
077173

CONFORMS TO ANSI B71.4 SAFETY STANDARD COMMERCIAL TURF CARE EQUIPMENT.

SAFETY FIRST

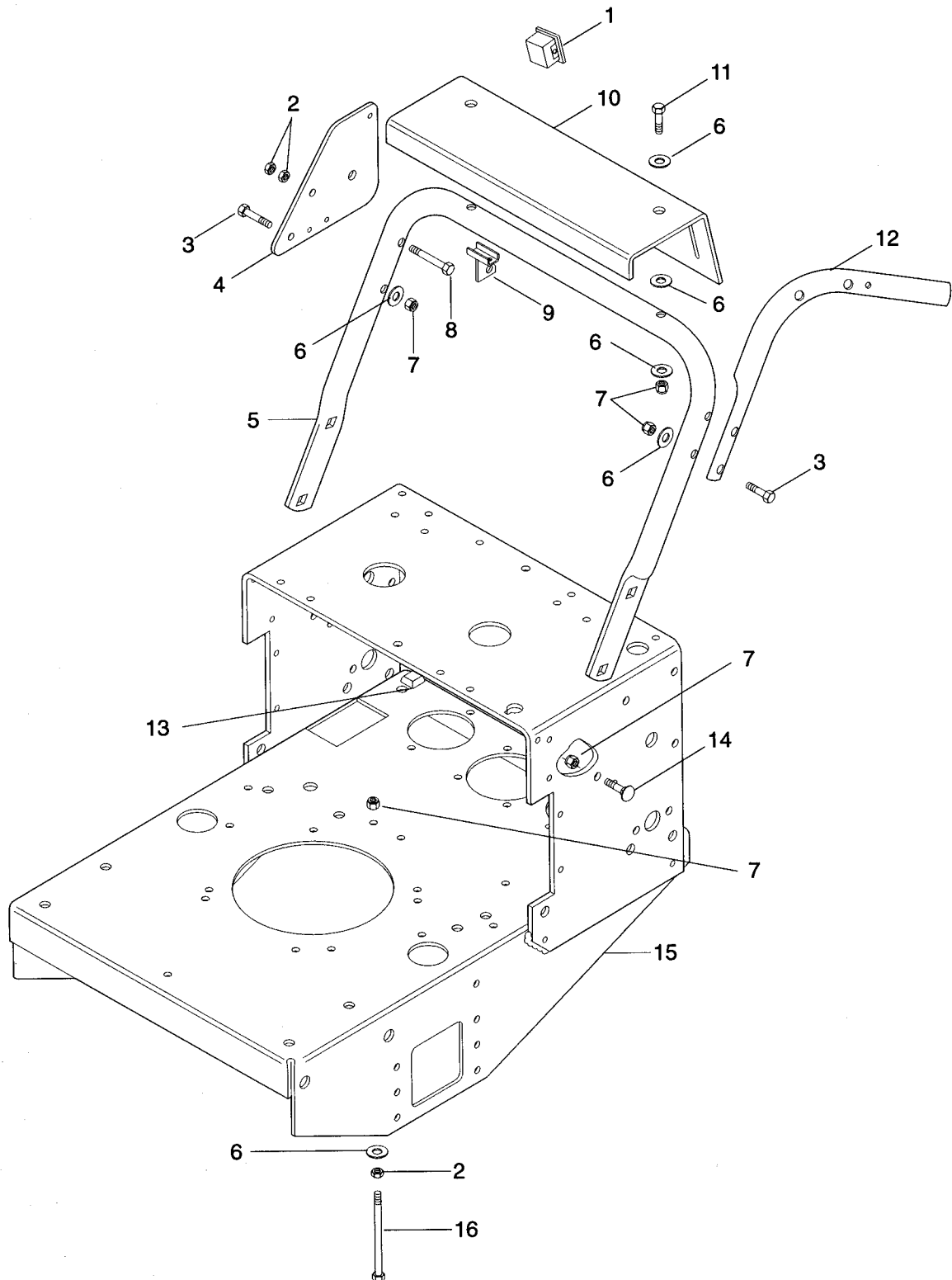
- READ THE OPERATOR'S MANUAL BEFORE OPERATING OR DOING MAINTENANCE ON THIS EQUIPMENT.
- KEEP ALL GUARDS AND SHIELDS IN POSITION.
- NEVER PERMIT CHILDREN TO OPERATE THIS EQUIPMENT.
- NEVER PERMIT PERSONS OTHER THAN THE OPERATOR TO RIDE ON THIS EQUIPMENT.
- LOOK FOR PEOPLE AND HAZARDS.
- BEFORE LEAVING THE OPERATOR POSITION PUT THE PTO CONTROL IN THE OFF POSITION.
- REMOVE THE IGNITION KEY.
- LOWER THE ATTACHMENT.
- SET THE BRAKE LOCK FOR PARKING.

NEUTRAL LATCH
LEFT TURN
RIGHT TURN

NEUTRAL LATCH

FAST
SPEED CONTROL
SLOW
NEUTRAL

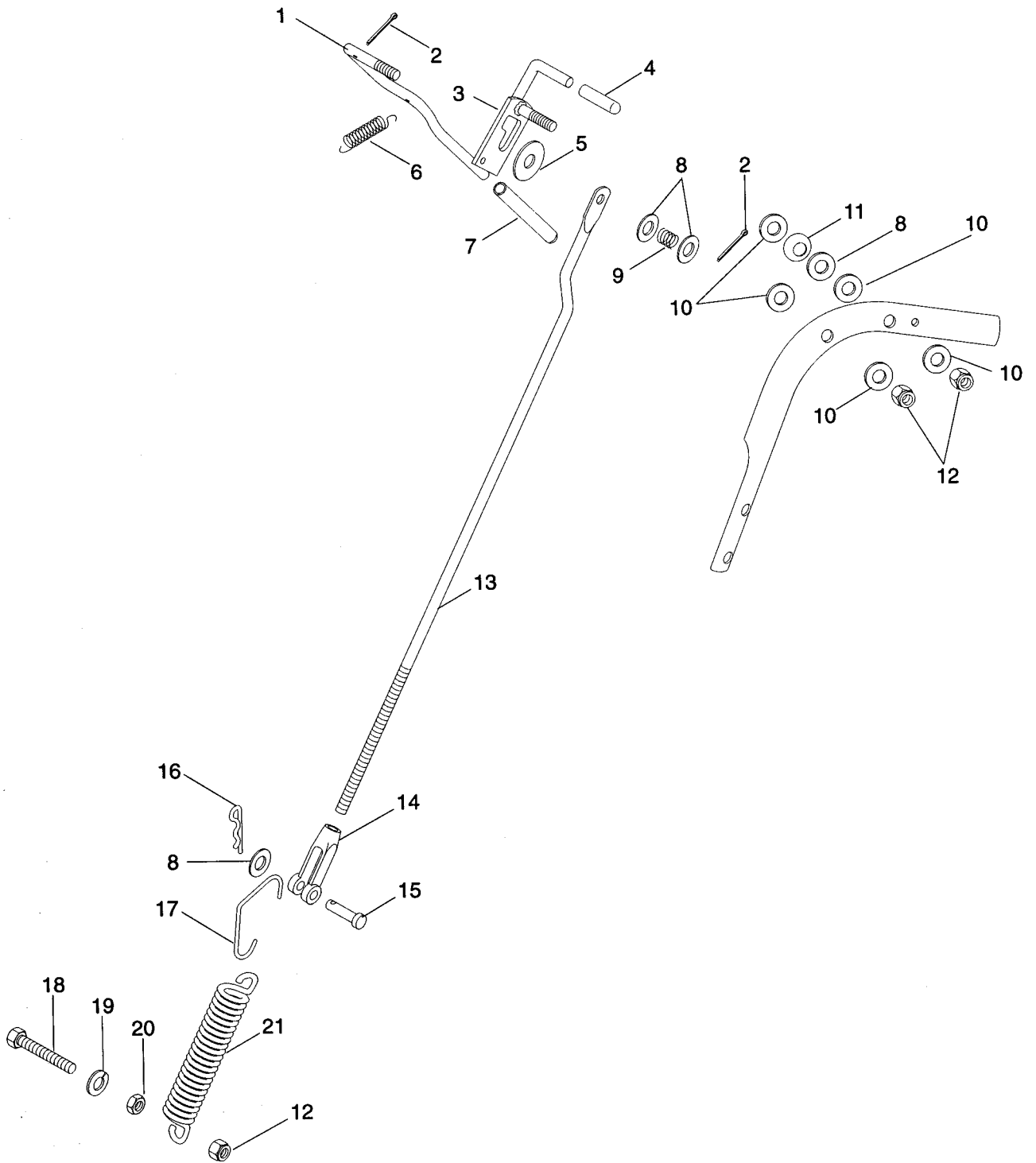
Frame



Frame

ITEM NO.	OLD PART NO.	NEW PART NO.	DESCRIPTION	QTY
1	051212	09003300	Switch, Blank (065)	1
2	120377	06501800	Nut, Hex .375-16	3
3	180132	05924300	Bolt, Hex, .38-16 x 2.25, Grade 5	3
4	051126	08843600	Plate, Speed Control Lever	1
5	049032	08868500	Tube, Handlebar Mounting	1
6	120394	06404300	Washer, Flat, Steel .406 x .812 x .065	9
7	456004	06513500	Nut, Locking, Nylon .375-16	10
8	180134	05915200	Bolt, Hex .38-16 x 2.50 Grade 5	1
9	051133	08844100	Weldment, PTO Lever Mounting	1
10	053108	08856800	Panel, Instrument	1
11	180130	05914700	Bolt-Hex .38-16 x 2.00 Grade 5	2
12	052622	08847500	Handlebar, Left Hand	1
	052623	08847600	Handlebar, Right Hand	1
13	040176	07525100	Stop	1
14	120915	06201300	Bolt, Round Head Square Neck .38-16 x 1.0	4
15	051104	08842300	Weldment, Frame (HYDROPRO)	1
16	191163	05938800	Bolt, Hex .38-16 x 4.00	1
N/S	077112	07711200	Decal Warning Foreign (Euro Models Only)	1

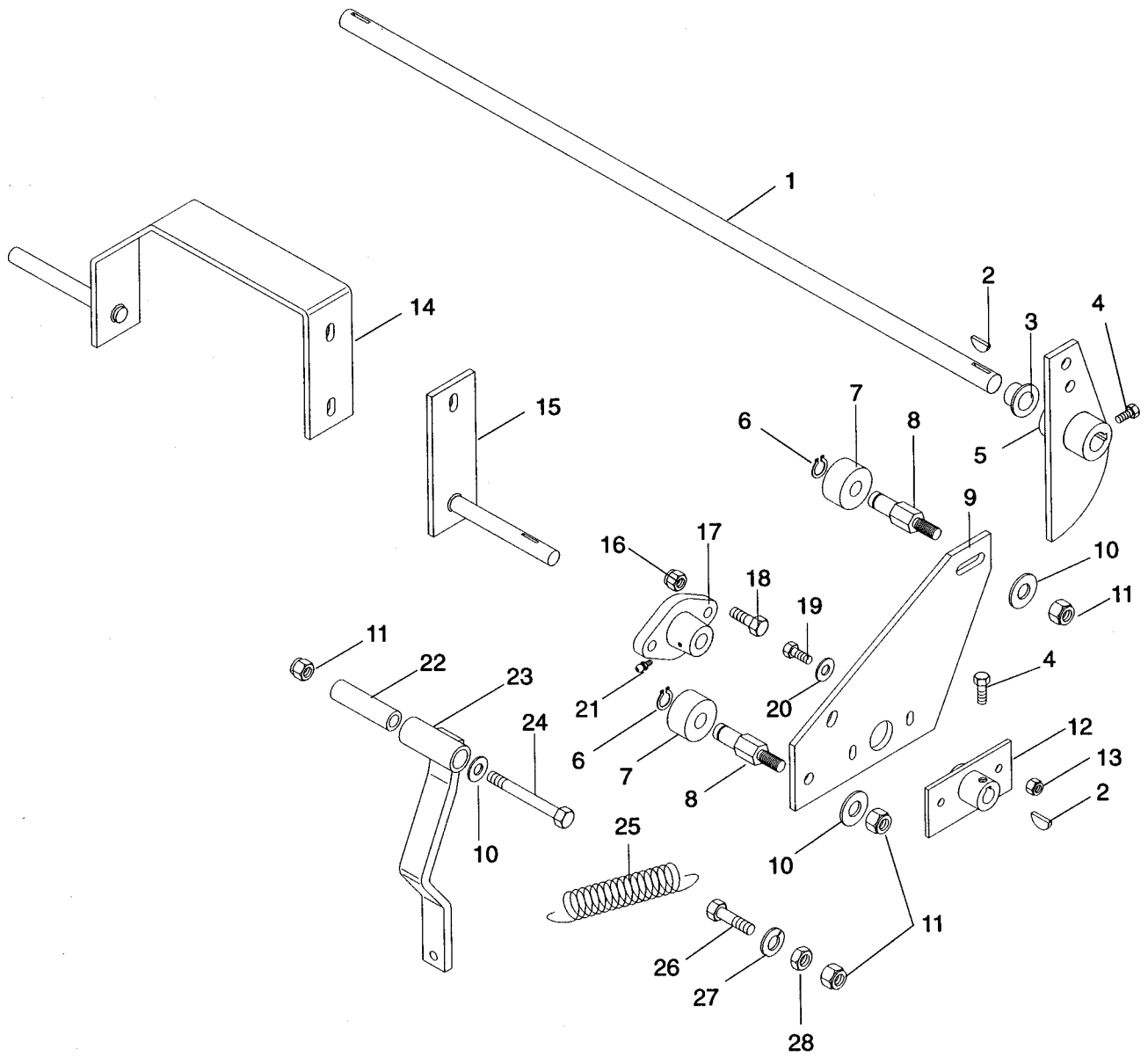
Steering Control



Steering Control

ITEM NO.	OLD PART NO.	NEW PART NO.	DESCRIPTION	QTY
1	052624	08847700	Lever, Hand Control	2
2	121222	06700100	Pin-Cotter .09 x .75	4
3	052680	08848200	Weldment, Neutral Locking Lever	2
4	043192	07503800	Tip, Brake Lock Lever	2
5	446477	06430900	Washer-Flat-Steel .438 x 1.375 x .083	2
6	043446	08339300	Spring-Tens .041 x .500 x 1.750	2
7	043197	07528300	Grip, Hand Clutch Lever	2
8	120394	06404300	Washer-Flat-Steel .406 x .812 x .065	8
9	043193	08338800	Spring-Compression .045 x .600 x .750	2
10	020775	06433600	Washer-Flat-Nylon .375 x .75 x .060	10
11	041623	06433000	Washer-Spring .375	2
12	456004	06513500	Nut-Locking-Nylon .375-16 Grade 2	6
13	051236	08878900	Rod, Pump Control	2
14	018380	08800400	Clevis, .38-24 Adjustable	2
15	050994	06810200	Pin-Clevis .370 x 1.50	2
16	036185	06702000	Pin-Hair Internal .08 x .18 x 1.18	2
17	051670	08879000	Hook, Spring	2
18	044609	05943100	Bolt-Hex .38-16 x 2.50	2
19	120382	06302100	Washer-Lock .375 x .094	2
20	120377	06501800	Nut-Hex .375-16 Grade 2	2
21	052617	08346800	Spring-Tens .105 x 1.00 x 4.5	2

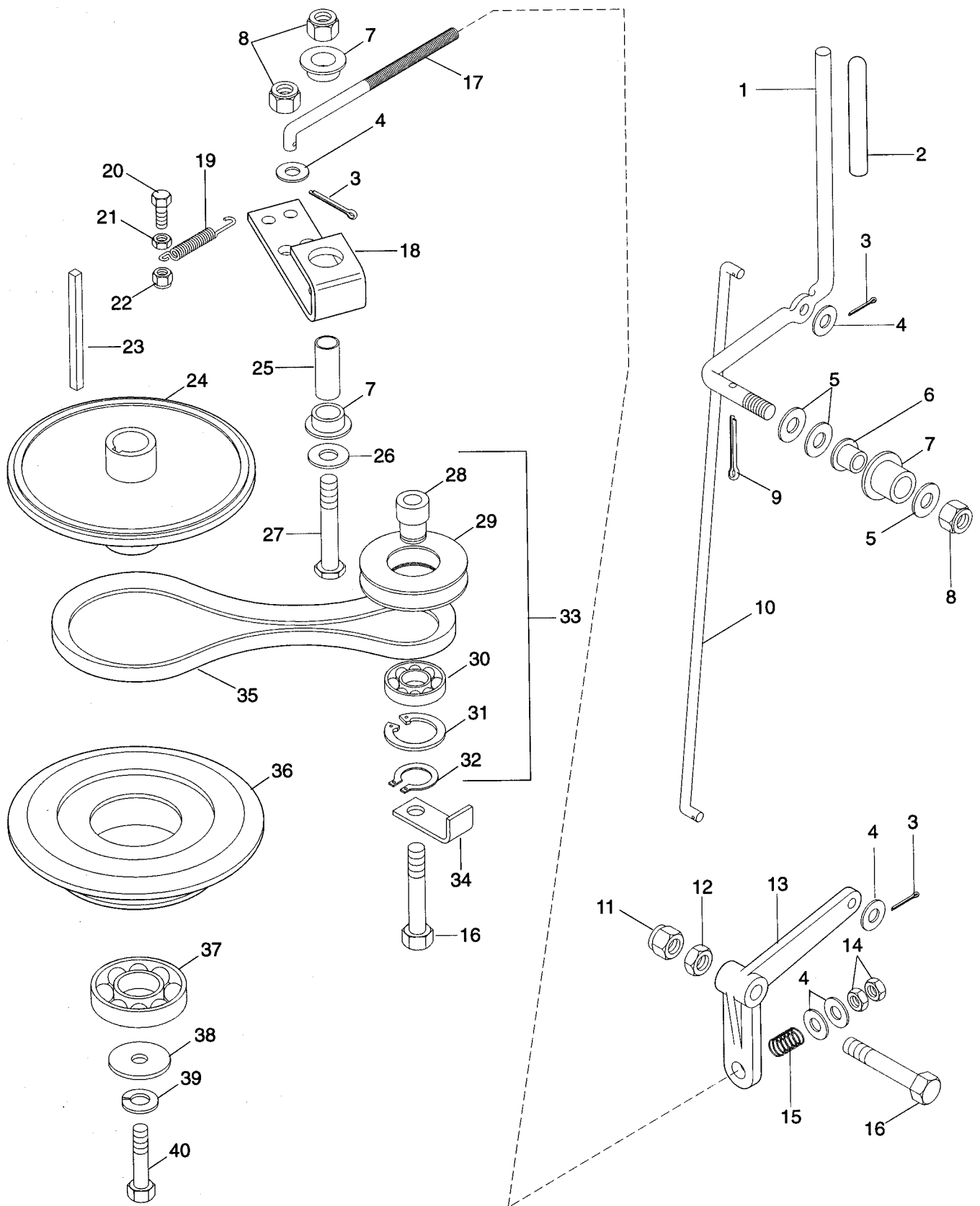
Wheel Drive



Wheel Drive

ITEM NO.	OLD PART NO.	NEW PART NO.	DESCRIPTION	QTY
1	051131	08843900	Shaft, Speed Control Cam	1
2	124547	06608600	Key, Woodruff .13 x .75	4
3	045787	05517400	Bushing, Flange .630 x 1.000 x .625	2
4	180016	05915500	Bolt-Hex .25-20 x .50 Grade 5	4
5	051117	08842900	Weldment, Control Cam	2
6	048988	05715600	Ring-Retaining-Internal 2.68 x .049	4
7	050993	08834000	Roller, Nylon	4
8	051123	08843300	Pin, Roller	4
9	052202	08847100	Arm, Speed Control	2
10	120394	06404300	Washer-Flat-Steel .406 x .812 x .065	6
11	456004	06513500	Nut-Locking-Nylon .375-16 Grade 2	8
12	052203	08847200	Weldment, Neutral Adjustment	2
13	419454	06506600	Nut-Locking-Nylon .250-20	4
14	052682	08848400	Weldment, Pump Control, Right Hand	1
15	052683	08848500	Weldment, Pump Control, Left Hand	1
16	419455	06506200	Nut-Locking-Nylon .312-18 Grade 2	4
17	052631	08847800	Bushing, Flanged Support	2
18	180079	05918100	Bolt-Hex .31-18 x 1.00 Grade 5	4
19	180020	05908200	Bolt-Hex .25-20 x .75 Grade 5	4
20	120392	06424900	Washer-Flat-Steel .281 x .625 x .065	4
21	411027	07012600	Fitting-Lube .25-28 x .256	2
22	049022	08831500	Bushing, Steel .385 x .610 x 1.80	2
23	051124	08843400	Weldment, Detent Strap	2
24	180137	05916000	Bolt-Hex .38-16 x 2.75 Grade 5	2
25	051233	08345500	Spring-Tens .063 x .62 x 2.75	2
26	180126	05915100	Bolt-Hex .38-16 x 1.50 Grade 5	2
27	120382	06302100	Washer-Lock .375 x .094	2
28	120377	06501800	Nut-Hex .375-16 Grade 2	2

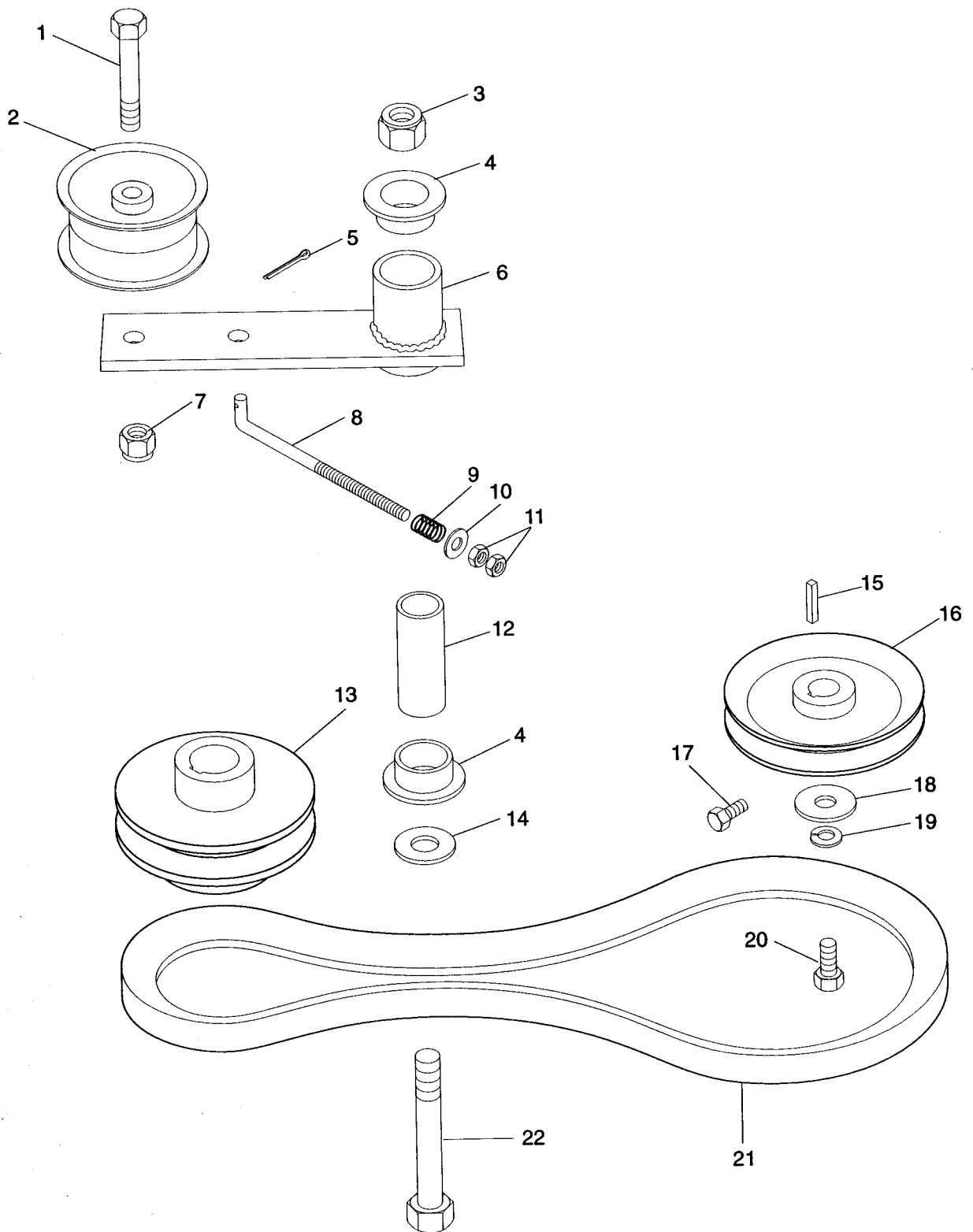
PTO Clutch Linkage



PTO Clutch Linkage

ITEM NO.	OLD PART NO.	NEW PART NO.	DESCRIPTION	QTY
1	051147	08878800	Lever, PTO Actuating	1
2	043196	07528200	Grip, PTO Lever	1
3	121222	06700100	Pin-Cotter .09 x .75	3
4	120394	06404300	Washer-Flat-Steel .406 x .812 x .065	5
5	415543	06430200	Washer-Flat-Steel .531 x 1.250 x 1.00	3
6	034738	05521100	Bushing-Flange .515 x .750 x .745 x 1.00	1
7	010174	05518400	Bushing-Flange .762 x 1.0 x .580 x 1.48	3
8	435507	06512900	Nut-Locking-Nylon .50-13 Grade 5	3
9	187988	06706300	Pin-Cotter .188 x 1.25	1
10	049345	08836400	Rod, PTO Control	1
11	414074	06525800	Nut-Locking .50-13	1
12	120238	06501700	Nut-Jam .50-13 Grade 2	1
13	051139	08844600	Lever, PTO Clutch	1
14	120377	06501800	Nut-Hex .375-16 Grade 2	2
15	011779	08327000	Spring-Compression .125 x .78 x 1.00	1
16	180185	05914400	Bolt-Hex .50-13 x 2.50 Grade 5	2
17	041334	08876200	Rod, PTO Clutch Actuating	1
18	051887	08846200	Arm, Idler Pivot	1
19	034385	08331900	Spring-Tens .061 x .50 x 3.5	1
20	180079	05918100	Bolt-Hex .31-18 x 1.00 Grade 5	1
21	120376	06501500	Nut-Hex .312-18 Grade 2	1
22	419455	06506200	Nut-Locking-Nylon .312-18 Grade 2	1
23	051229	06607600	Key-Square .250 x 3.60 x .250	1
24	051136	08844400	Hub, PTO Clutch	1
	088553	08855300	Hub, PTO Clutch (076 Only)	1
25	041992	08815100	Bushing, Steel .560 x .745 x 2.04	1
26	120396	06429500	Washer-Flat-Steel .531 x 1.062 x .095	1
27	041333	08813700	Bolt-Hex 1/2-13 x 2.75	1
28	039327	08810700	Bushing, Flange .515 x .787 x 1.41	1
29	038896	08744300	Sheave, Idler	1
30	038898	05425100	Bearing-Ball 1.85 x .787 x .55	1
31	018960	05713100	Ring-Retaining-Internal 2.054 x .062	1
32	039331	05715200	Ring-Retaining Truarc	1
33	039336	08810900	Assembly, Idler Sheave	1
34	039330	08810800	Guard, Belt	1
35	043213	07221200	V-Belt A-RMA 13.8 x .480	1
36	041353	08814000	Sheave, Mower Clutch	1
37	035330	05424600	Bearing, Ball, 1.57 x 3.15 x .71	1
38	044379	06426400	Washer-Special .469 x 2.000 x .250	1
39	120383	06305000	Washer-Lock .44 Reg	1
40	181676	05937500	Bolt-Hex .44-20 x 2.50 (19,64)	1
	042494	05942800	Bolt-Hex 10MM x 1.5 x 60MM (65)	1

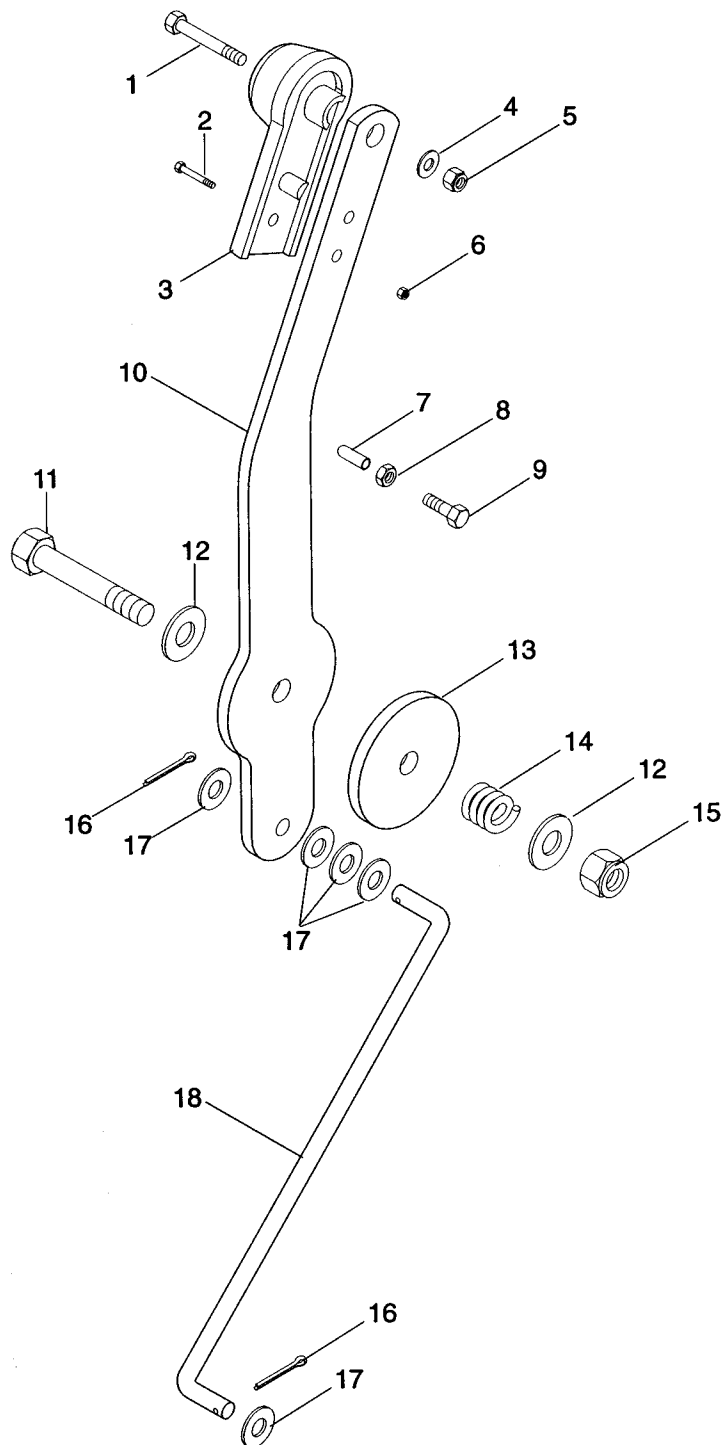
Traction Clutch Linkage



Traction Clutch Linkage

ITEM NO.	OLD PART NO.	NEW PART NO.	DESCRIPTION	QTY
1	180128	05916100	Bolt-Hex .38-16 x 1.75 Grade 5	1
2	052062	07320700	Idler, Pulley, Flat, 3.25 x .625	1
3	435507	06512900	Nut-Locking-Nylon .50-13 Grade 5	1
4	010174	05518400	Bushing-Flange .762 x 1.0 x .580 x 1.48	2
5	121222	06700100	Pin-Cotter .09 x .75	1
6	051134	08844200	Weldment, Ground Drive Idler	1
7	456004	06513500	Nut-Locking-Nylon .375-16 Grade 2	1
8	052661	08879300	Rod, Idler	1
9	011779	08327000	Spring-Compression .125 x .78 x 1.00	1
10	120394	06404300	Washer-Flat-Steel .406 x .812 x .065	1
11	120369	06522900	Nut-Hex .375-24 Grade 2	2
12	041992	08815100	Bushing, Steel, .560 x .745 x 2.04	1
13	051137	08844500	Sheave, Engine Ground Drive	1
	053032	08855400	Sheave, Engine Ground Drive (076 Only)	1
14	120396	06429500	Washer-Flat-Steel .531 x 1.062 x .095	1
15	050995	06607500	Key-Straight 5mm x 25mm x 5mm	2
16	051138	07318900	Sheave, 4.0 x .199	2
17	180016	05915500	Bolt-Hex .25-20 x .50 Grade 5	4
18	012694	06403700	Washer-Flat-Steel .281 x 1.250 x .062	2
19	120380	06304900	Washer-Lock .250 Reg.	2
20	050996	05943900	Bolt-Hex M6 x 1.0 x 12mm Lg	2
21	051141	07223100	V-Belt, A-RMA 24.50 x 33/64	1
22	180190	05936100	Bolt-Hex .50-13 x 3.00	1

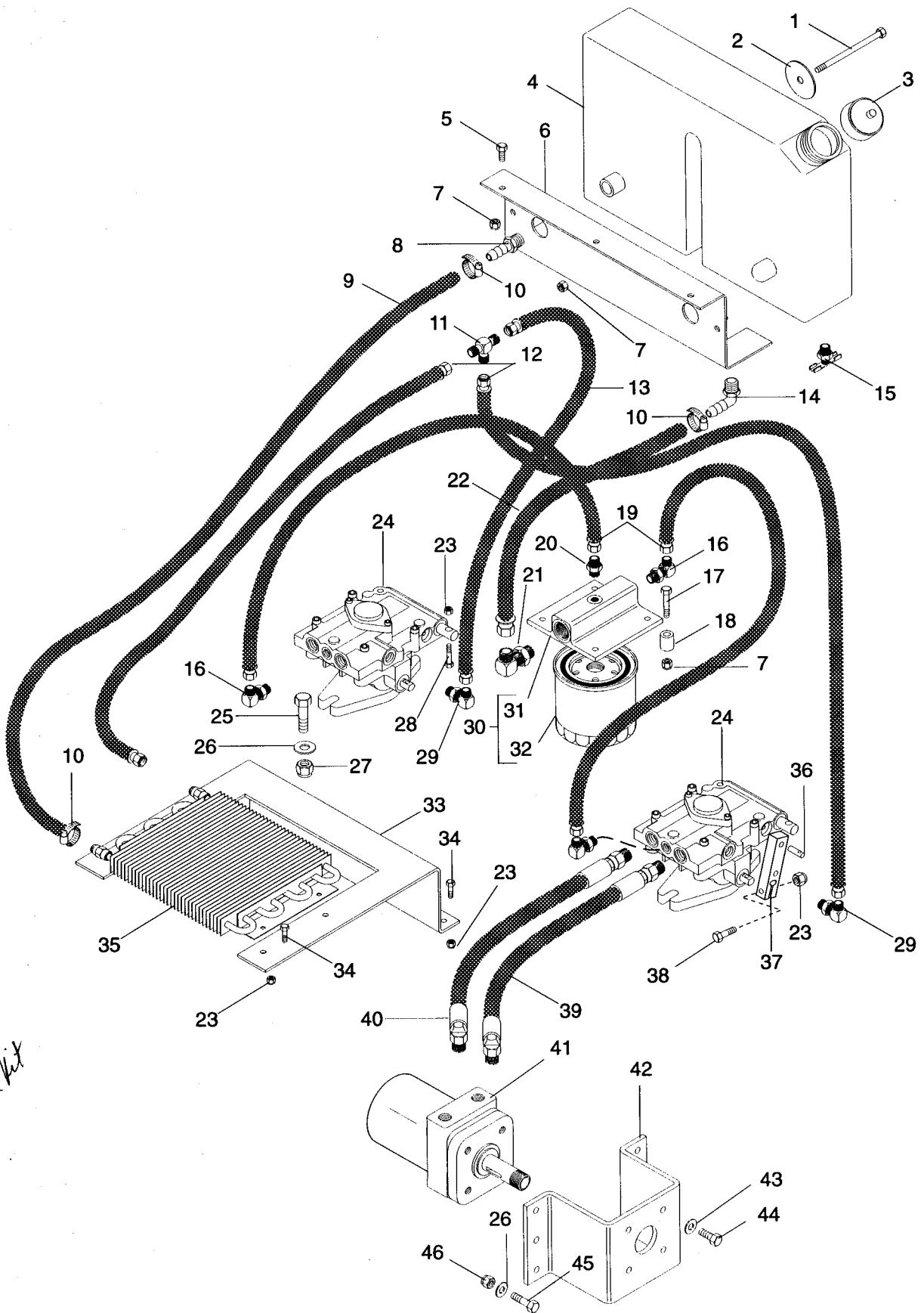
Gear Selector



Gear Selector

ITEM NO.	OLD PART NO.	NEW PART NO.	DESCRIPTION	QTY
1	180034	05905000	Bolt-Hex .25-20 x 1.50 Grade 5	1
2	159341	06110700	Screw-Machine 6-32 x .625	1
3	041252	07525800	Knob, Hand Control	2
4	120392	06424900	Washer-Flat-Steel .281 x .625 x .065	1
5	419454	06506600	Nut-Locking-Nylon .250-20 Grade 2	1
6	427254	06521100	Nut-Locking-Machine 6-32 w/Insert	1
7	019362	07520600	Cap	
8	120375	06523000	Nut-Hex .250-20 Grade 2	1
9	180020	05908200	Bolt-Hex .25-20 x .75 Grade 5	1
10	051128	08843700	Lever, Speed Control	1
11	180185	05914400	Bolt-Hex .50-13 x 2.50 Grade 5	1
12	120396	06429500	Washer-Flat-Steel .531 x 1.062 x .095	2
13	051230	08844900	Disc, Friction Material	1
14	011779	08327000	Spring-Compression .125 x .78 x 1.00	1
15	435507	06512900	Nut-Locking-Nylon .50-13 Grade 5	1
16	121224	06700200	Pin-Cotter .09 x 1.0	2
17	120394	06404300	Washer-Flat-Steel .406 x .812 x .065	5
18	051718	08879100	Rod, Speed Control	1

Hydraulic System

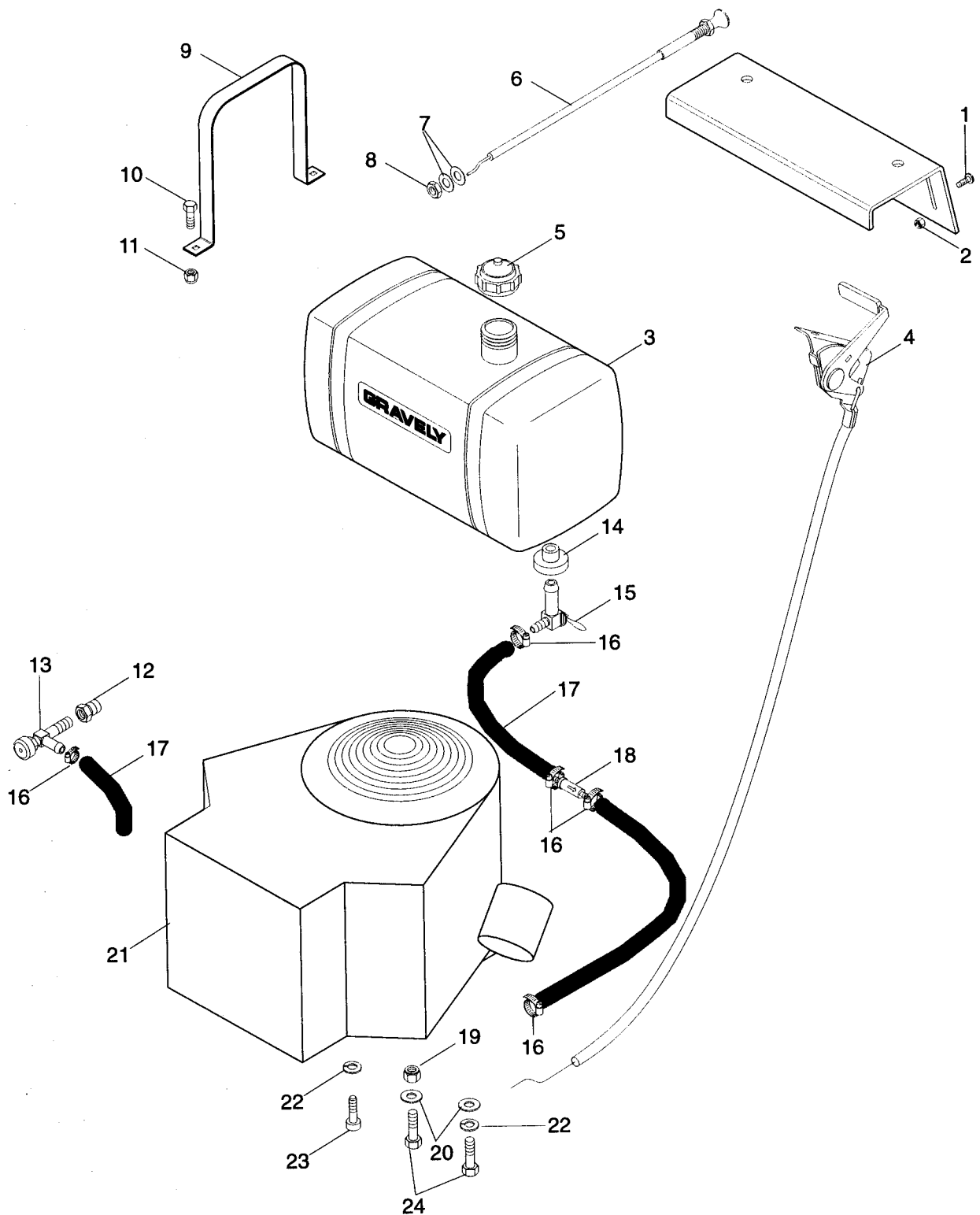


598003
pump seal kit

Hydraulic System

ITEM NO.	OLD PART NO.	NEW PART NO.	DESCRIPTION	QTY
1	187147	05938000	Bolt-Hex .31-18 x 3.50	1
2	053122	08857300	Washer, Flat .344 x 3.0 x .060	1
3	044877	08826200	Cap, Tank	1
4	053021	08868400	Tank, Hydraulic	1
5	180077	05913500	Bolt-Hex .31-18 x .75 Grade 5	2
6	053121	08857200	Bracket, Hydraulic Tank Mounting	1
7	419455	06506200	Nut-Locking-Nylon .312-18 Grade 2	7
8	053111	07018800	Adapter - Male	1
9	053105	08856600	Hose, Oil Cooler to Tank	1
10	021247	06923500	Clamp, .88 Diameter Hose	3
11	021799	07021500	Adapter, Tee, .56-18	1
12	039847	08811300	Hose, Hydraulic Valve to Tank	2
13	053103	08856400	Hose, Pump to Tee	1
14	046116	07019800	Fitting, Elbow, .50 x .50	1
15	053099	07018700	Cock, Drain, .38 x .69 x 1.25	2
16	018826	08800700	Adapter 2503-4-4	3
17	180087	05917000	Bolt-Hex .31-18 x 2.00 Grade 5	4
18	088808	08880800	Bushing, Split, .328 x .462 x .75	4
19	051281	08845200	Hose, Oil Filter to Pump	2
20	021286	08801500	Adapter 0503-4-4	1
21	050961	07018200	Adapter - Pipe .75-16	1
22	053104	08856500	Hose, Tank to Oil Filter	1
23	419454	06506600	Nut-Locking-Nylon .250-20 Grade 2	10
24	053330	08867300	Variable Displace Pump 588003 Pump Seal Kit	2
25	180123	05934800	Bolt-Hex .38-16 x 1.125	4
26	120394	06404300	Washer-Flat-Steel .406 x .812 x .065	16
27	413534	06524800	Nut-Locking-Center .625 - 10 Grade 2	4
28	180044	05916200	Bolt-Hex .25-20 x 2.00 Grade 5	2
29	018828	08800800	Adapter 2503-6-6	2
30	051142	08844700	Assembly, Spin-On Lube	1
31	051143	08157900	Assembly, Head	1
32	050968	08841800	Element	1
33	088754	08875400	Bracket, Oil Cooler, Recoil (65)	1
	053109	08856900	Bracket, Oil Cooler, B & S (19)	1
	053110	08857000	Bracket, Oil Cooler, Kohler (64)	1
34	180020	05908200	Bolt-Hex .25-20 x .75 Grade 5	6
35	053101	08856200	Cooler, Oil	1
36	051889	05808000	Pin-Dowel .312 x 1.25	3
37	088807	08880700	Arm, Pump Actuating	2
38	180024	05905600	Bolt-Hex .25-20 x 1.25 Grade 5	2
39	051232	08845100	Assembly, Hose, Wheel Motor to Pump	1
40	051231	08845000	Assembly, Hose, Wheel Motor to Pump	3
41	091117	09111700	Motor, Hydraulic Wheel	2
42	051106	08842400	Bracket, Wheel Motor	2
43	120382	06302100	Washer-Lock .375 x .094	8
44	180121	05932600	Bolt-Hex .380-16 x .875	8
45	180122	05914500	Bolt-Hex .38-16 x 1.00 Grade 5	12
46	456004	06513500	Nut-Locking-Nylon .375-16 Grade 2	12

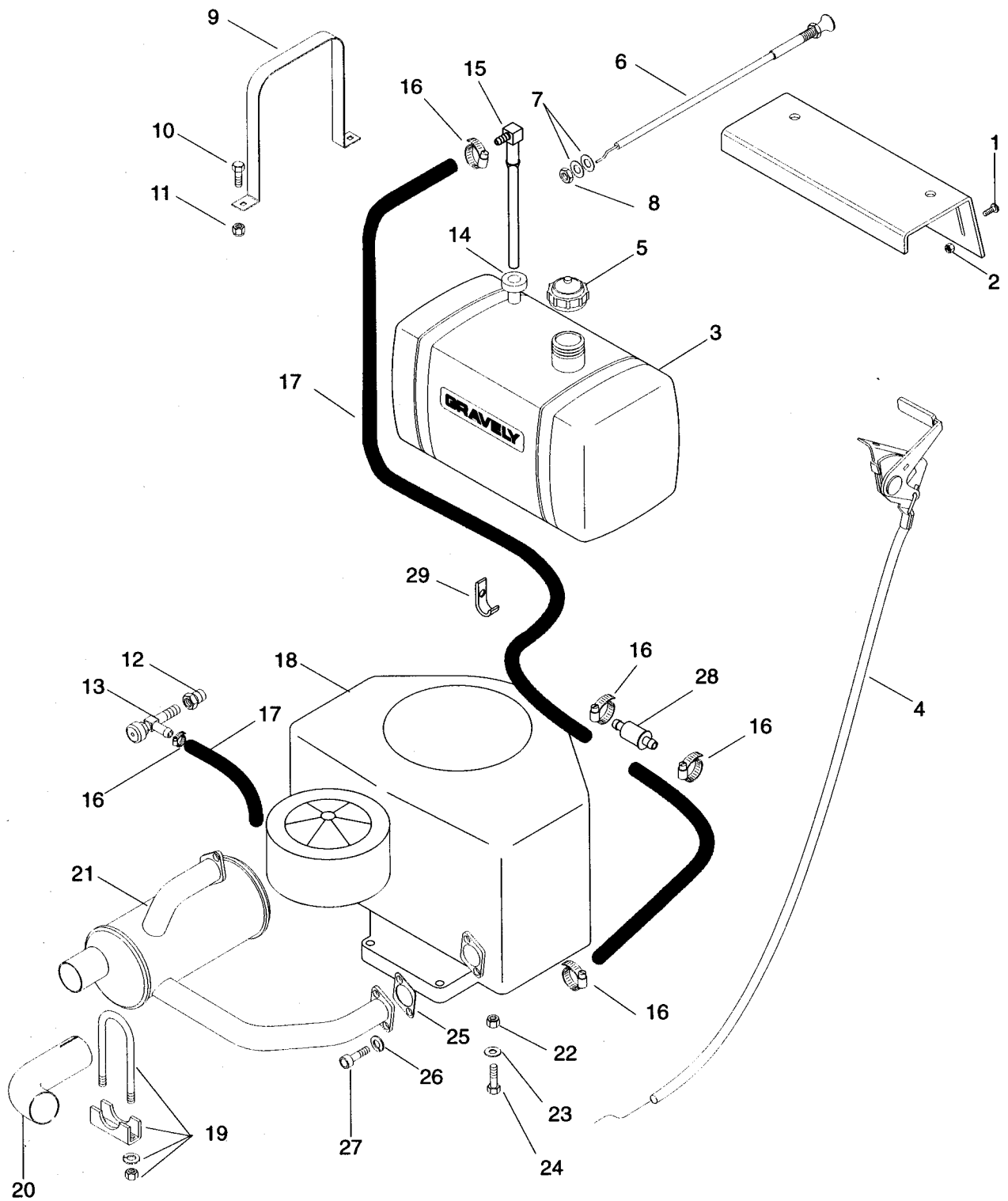
Fuel And Exhaust System - 14 and 16 H.P. Units



Fuel And Exhaust System - 14 and 16 H.P. Units

ITEM NO.	OLD PART NO.	NEW PART NO.	DESCRIPTION	QTY
1	160046	06113300	Screw-Machine 10-32 x .50	2
2	411893	06521700	Nut-Locking 10-32 Hex w/Insrt	2
3	049283	08867900	Tank, Fuel, Gravely PRO	1
4	052955	08873100	Assembly, Throttle Control/Cable (14 HP)	1
	050110	06925700	Assembly, Throttle Control/Cable (16 HP)	1
5	048856	07533400	Cap, Fuel Tank	1
6	035137	06924800	Control, Choke	1
7	120394	06404300	Washer-Flat-Steel .406 x .812 x .065	2
8	124925	06518800	Nut-Jam .375-24	1
9	049338	08835900	Strap, Fuel Tank	2
10	180018	05932000	Bolt-Hex .25-20 x .63	4
11	419454	06506600	Nut-Locking-Nylon .250-20 Grade 2	4
12	035328	03493100	Adapter, Oil Drain (14 HP)	1
	041831	08757700	Adapter, Oil Drain (16 HP)	1
13	035329	03493200	Cock, Oil Drain	1
14	047613	05520000	Bushing, Flange .375 x 1.06 x .625	1
15	049284	08835100	Valve, Ball Shut-Off	1
16	032045	06924300	Hose Clamp	5
17	021134	00924300	Gas Line, Bulk	2 ft.
18	088117	08811700	Filter, Fuel	1
19	419455	06506200	Nut-Locking-Nylon .312-18 Grade 2	4
20	120393	06429200	Washer-Flat-Steel .344 x .688 x .065	4
21	082375	08237500	Engine, 14 HP Kawasaki OHV	1
	082415	08241500	Engine, 16 HP B & S Vanguard	1
22	120214	06303600	Washer-Lock .313 x .078	4
23	051666	05931800	Screw-Socket Head M8 x 1.25 x 20mm	4
24	180083	05914000	Bolt-Hex .31-18 x 1.50 Grade 5 (14 HP)	4
	021914	05941500	Bolt-Hex M8 x 1.25 x 30mm (16 HP)	4

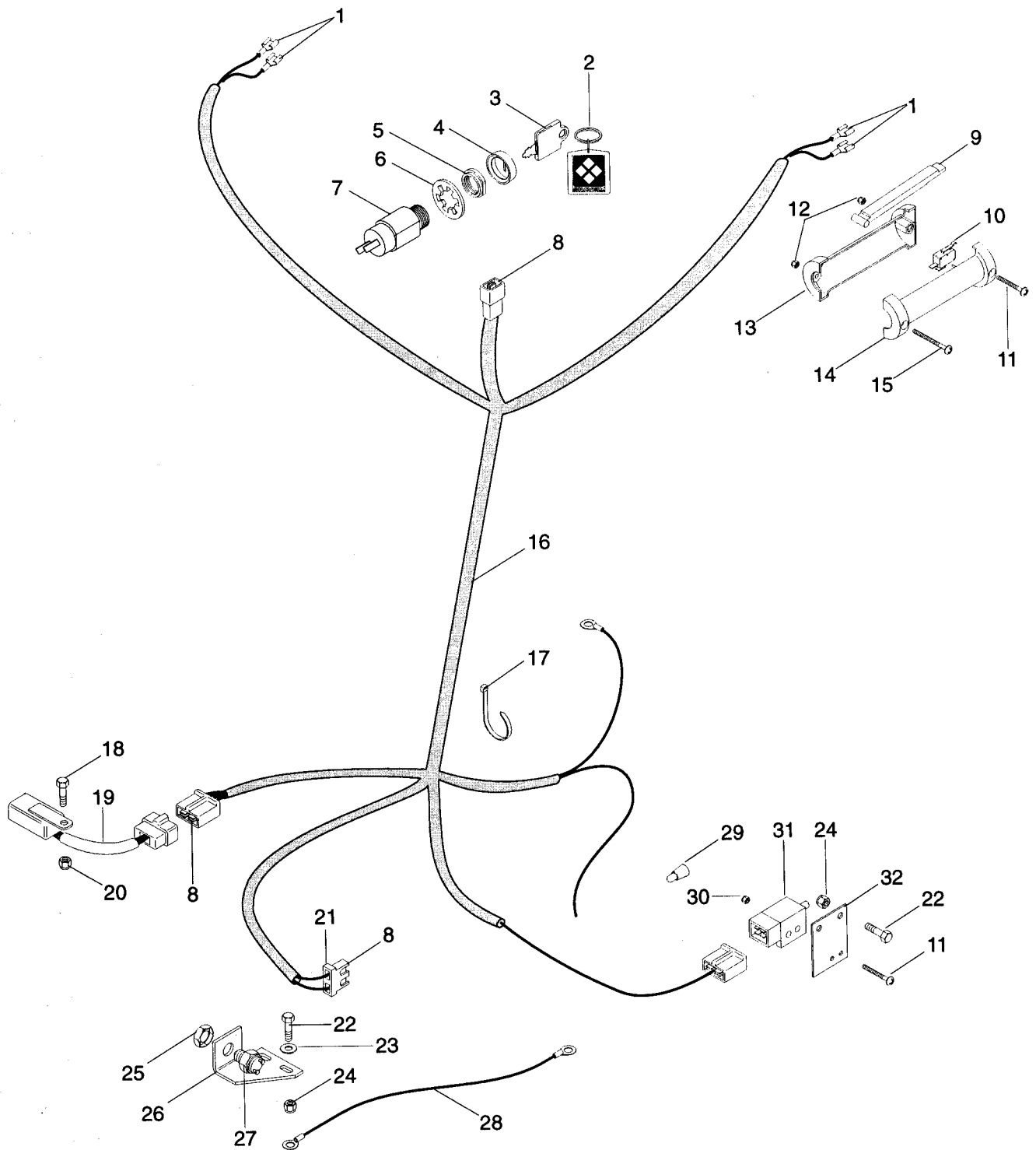
Fuel And Exhaust System - 18 & 20 H.P. Units



Fuel And Exhaust System - 18 & 20 H.P. Units

ITEM NO.	OLD PART NO.	NEW PART NO.	DESCRIPTION	QTY
1	160046	06113300	Screw-Machine 10-32 x .50	2
2	411893	06521700	Nut-Locking 10-32 Hex w/Insert	2
3	091122	09112200	Tank, Fuel, Gravely PRO	1
4	049339	06925800	Throttle Control Cable Assembly	1
5	048856	07533400	Cap, Fuel Tank	1
6	035137	06924800	Control, Choke (064)	1
	069361	06936100	Cable, Choke (073)	1
7	120394	06404300	Washer-Flat-Steel .406 x .812 x .065	2
8	124925	06518800	Nut, Jam .375-24	1
9	049338	08835900	Strap, Fuel Tank	2
10	180018	05932000	Bolt-Hex .25-20 x .63	2
11	419454	06506600	Nut-Locking-Nylon .250-20 w/Insert Grade 2	4
12	035328	03493100	Adapter, Oil Drain	1
13	035329	03493200	Cock, Oil Drain	1
14	050246	07511400	Bushing	1
15	091123	09112300	Fitting, Tank	1
16	032045	06924300	Hose Clamp	5
17	021134	00924300	Gas Line, Bulk	2 ft.
18	047349	08234600	Engine, 18 HP Magnum (064)	1
	082467	08246700	Engine, Kohler CV18	1
	082381	08238100	Engine, 20 HP Kohler CV20S	1
19	041522	06807700	Rivet-Pop .125 x .243 (064)	1
20	044550	08826100	Deflector (064)	1
21	044389	08824600	Muffler (064)	1
N/S	092047	09204700	Muffler (073,076)	1
N/S	092052	09205200	Heat Shield (073,076)	1
22	419455	06506200	Nut-Locking-Nylon .312-18 w/Insert Grade 2	4
23	120393	06429200	Washer-Flat-Steel .344 x .688 x .065	4
24	180083	05914000	Bolt-Hex .31-18 x 1.50 Grade 5	4
25	044390	08824700	Gasket, Exhaust	2
26	120214	06303600	Washer-Lock .313 x .078	4
27	421705	05933100	Screw-Cap .31-18 x .75	4
28	088117	08811700	Filter, Fuel (064)	1
29	069094	06909400	J-Clamp (064)	1

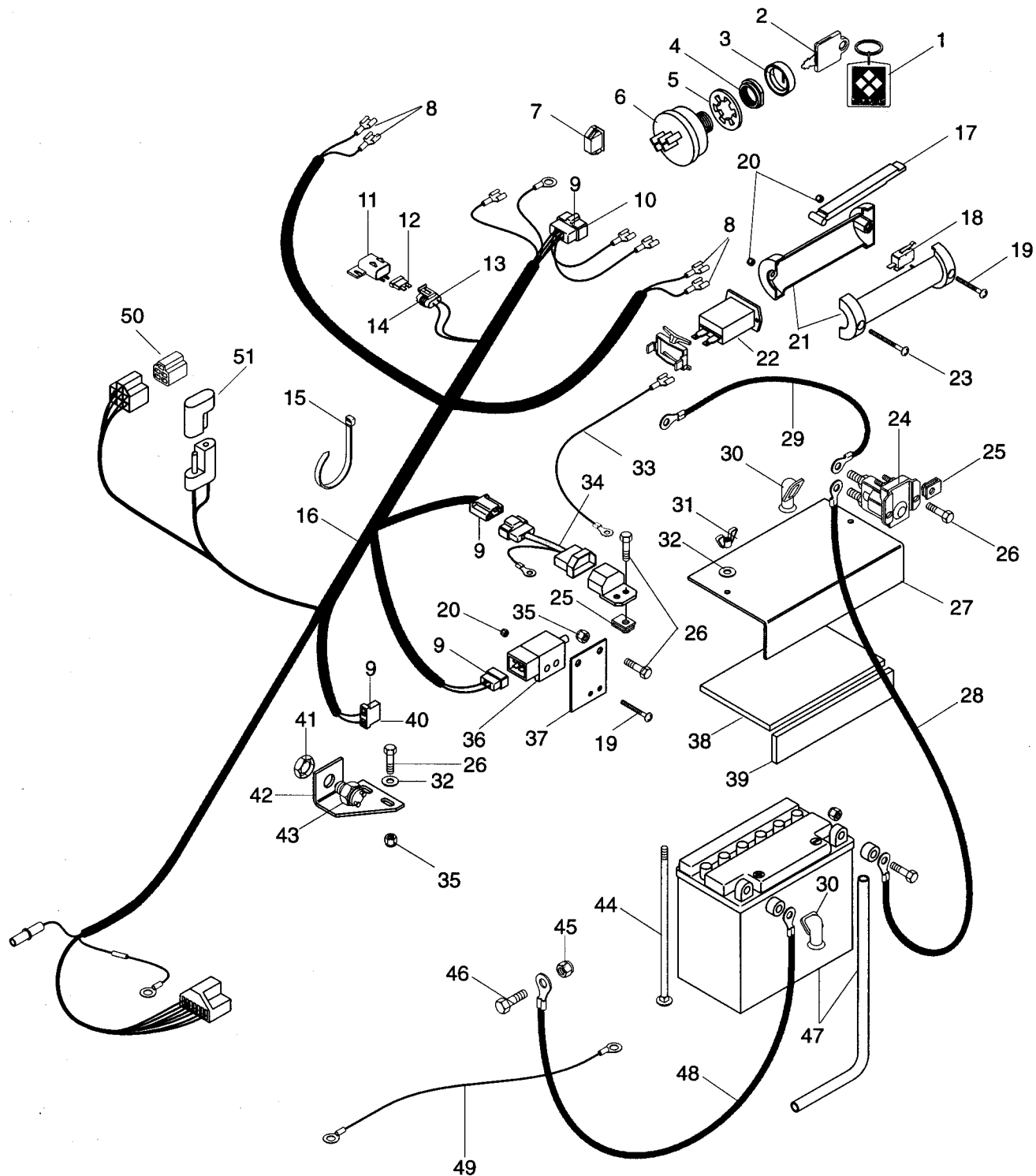
Electrical System 14 H.P. Unit (Recoil Start)



Electrical System - 14 H.P. Unit (Recoil Start)

ITEM NO.	OLD PART NO.	NEW PART NO.	DESCRIPTION	QTY
1	046988	08828400	Terminal, Female	4
2	045842	03490000	Key Chain	1
3	045488	03489900	Ignition Switch Key	2
4	045490	07517700	Cap-Ignition Switch	1
5	045497	06517300	Nut-Panel .625-32	1
6	018586	06306400	Washer-Lock .625	1
7	030202	08802300	Switch	1
8	038059	08540000	Terminal	8
9	046822	08602200	Lever	2
10	046823	08828300	Switch	2
11	159929	06111100	Screw-Machine 10-24 x .625	2
12	190254	06506500	Nut-Locking 10-24 Nylon	6
13	046821	20858500	Handle, Right Hand	2
14	046820	20858400	Handle, Left Hand	2
15	159967	06113200	Screw-Machine 10-24 x 1.50	2
16	088755	08875500	Wire Harness, Pro-300 Recoil	1
17	041634	07519900	Tie Wrap, Black	8
18	180020	05908200	Bolt-Hex .25-20 x .75 Grade 5	1
19	041882	08814800	Module	1
	048803	08830100	Module	1
20	419454	06506600	Nut-Locking-Nylon .250-20 w/Insert Grade 2	1
21	042176	08550000	Connector, 2-Wire Switch	2
22	180020	05908200	Bolt-Hex .25-20 x .75 Grade 5	4
23	120392	06424900	Washer-Flat-Steel .281 x .625 x .065	2
24	419454	06506600	Nut-Locking-Nylon .250-20 w/Insert Grade 2	4
25	107354	07015100	Nut-Stamped .56-18	1
26	051717	08846000	Bracket, Interlock Switch	1
27	020916	02913100	Switch, Neutral Start, N.O.	1
28	042529	08818400	Wire, Ground	1
29	011763	07016700	Nut-Connector	1
30	190254	06506500	Nut, Locking, 10-24, Nylon	2
31	046219	08828100	Switch, Interlock	1
32	051810	08846100	Bracket, Interlock Switch	1

Electrical System - 16, 18 and 20 H.P. Units (Electric Start)



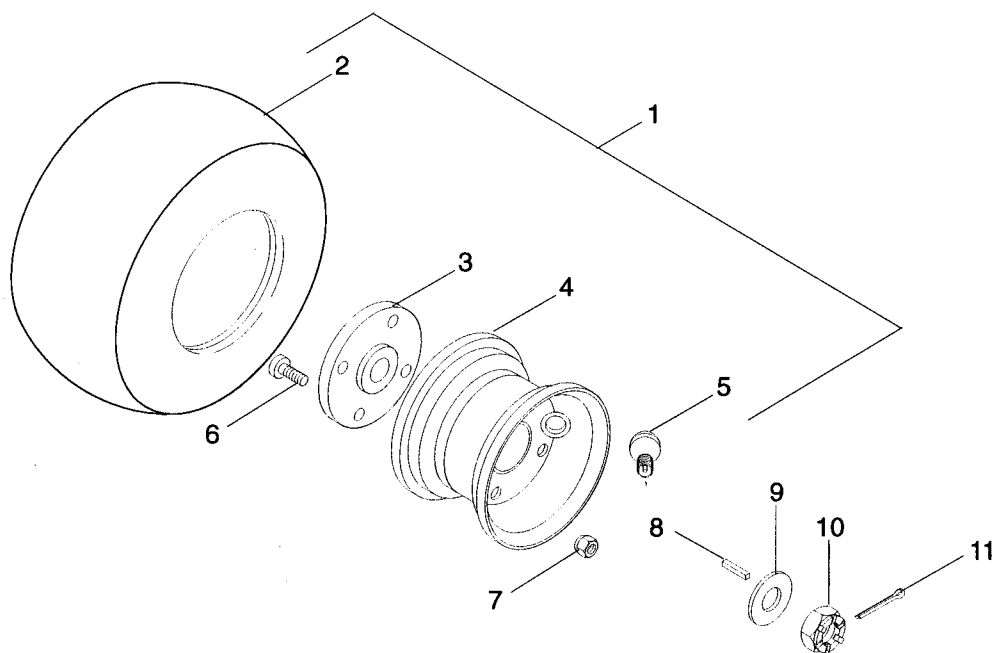
Electrical System - 16, 18 and 20 H. P. Units (Electric Start)

ITEM NO.	OLD PART NO.	NEW PART NO.	DESCRIPTION	QTY
1	045842	03490000	Key Chain	1
2	045488	03489900	Ignition Switch Key	2
3	045490	07517700	Cap - Ignition Switch	1
4	045497	06517300	Nut-Panel .625-32	1
5	018586	06306400	Washer-Lock .625	1
6	027396	02739600	Ignition Switch Assembly (064)	1
	088833	08883300	Switch, Key (019)	1
	036023	03602300	Key Switch (073,076) <i>Command Engine</i>	1
7	050673	08841200	Light, Indicator	1
8	046988	08828400	Terminal, Female	4
9	038059	08540000	Terminal	11
10	038058	20645100	Connector	1
11	045921	20822800	Cover	1
12	045037	08961800	Fuse, 25 AMP	1
13	045920	20822700	Assembly, Connector, Weather Tight	1
14	045923	20823000	Terminal, For 10-12 Gauge Wire	2
15	041634	07519900	Tie Wrap, Black	7
16	053036	08855600	Harness, Wiring, 20-HP Kohler (064)	1
	088832	08883200	Harness, Wiring, Pro-300/16 B & S (019)	1
	088938	08893800	Harness, Wiring (073,076)	1
17	046822	08602200	Lever	2
18	046823	08828300	Switch	2
19	159929	06111100	Screw-Machine 10-24 x .625	4
20	190254	06506500	Nut-Locking 10-24 Nylon	6
21	053003	08602300	Handle	2
22	038256	03492700	Hour Meter	1
23	159967	06113200	Screw-Machine 10-24 x 1.50	2
24	045071	03492300	Solenoid (064)	1
25	011676	07016800	Nut-Speed .25-20	3
26	180020	05908200	Bolt-Hex .25-20 x .75 Grade 5	7
27	049294	08835800	Cover, Battery	1
28	042129	08816700	Cable, Battery to Solenoid	1
29	047649	03492500	Cable, Starter (019)	1
	035141	08805700	Cable, Solenoid to Starter (064,073,076)	1
30	033847	03384700	Boot, Insulator	4
31	010413	06506400	Nut-Wing .250-20	2
32	120392	06424900	Washer-Flat-Steel .281 x .625 x .065	4
33	021425	08801600	Wire, Instrument Panel	1
34	043435	58801000	Kit, Interlock Module, Electric (064)	1
		08885400	Adapter Harness, Interlock (064)	1
		08885800	Module, Interlock, Electric	1
	088147	58800800	Kit, Interlock Module, Electric (019)	1
		08885300	Adapter Harness, Interlock (019)	1
		08885800	Module, Interlock, Electric (019)	1
		07915400	Service Bag (019)	1
35	419454	06506600	Nut-Locking-Nylon .250-20 w/Insert Grade 2	4
36	046219	08828100	Switch, Interlock	1

Electrical System - 16, 18 and 20 H. P. Units (Electric Start) continued

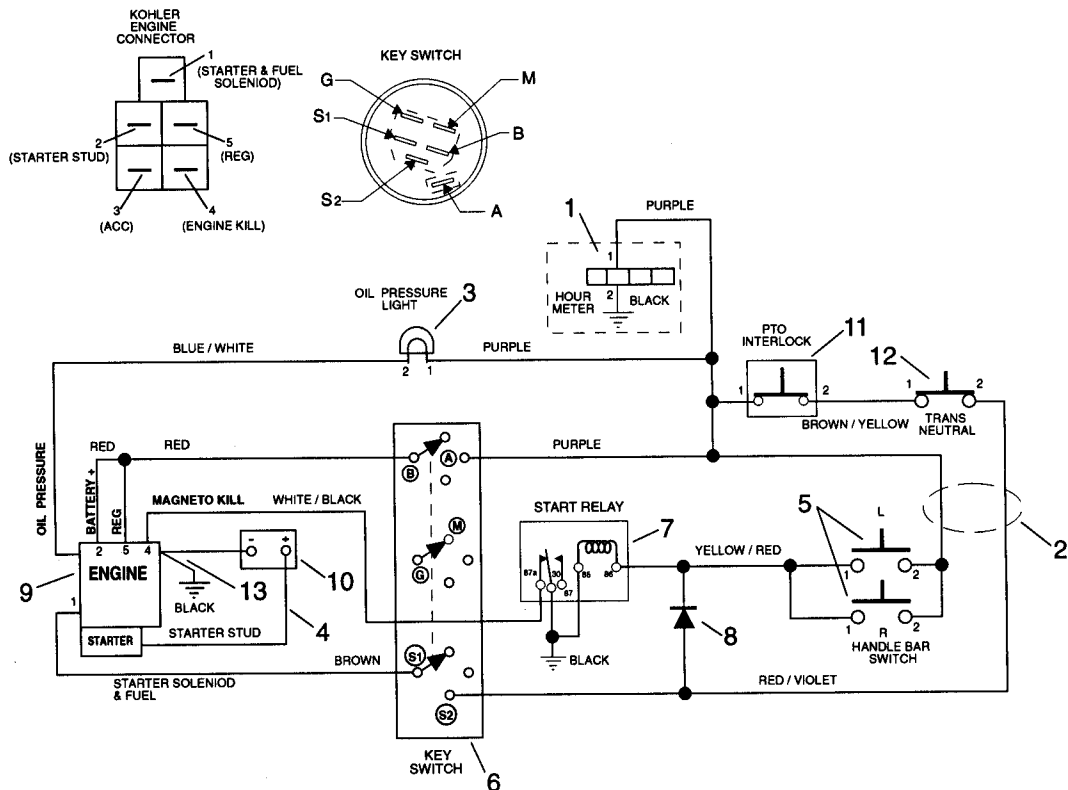
ITEM NO.	OLD PART NO.	NEW PART NO.	DESCRIPTION	QTY
37	051810	08846100	Bracket, Interlock Switch	1
38	050417	08803400	Pad, Battery	1
39	050418	08800600	Pad, Battery	1
40	042176	08550000	Connector, 2-Wire Switch	2
41	107354	07015100	Nut-Stamped .56-18	1
42	051717	08846000	Bracket, Interlock Switch	1
43	020916	02913100	Switch-Neutral Start N.O.	1
44	126922	06218700	Bolt-Round Head Square Neck .25-20 x 7.00	2
45	419455	06506200	Nut-Locking Nylon .312-18 w/Insert Grade 2 (064,073)	1
46	180079	05918100	Bolt-Hex .31-18 x 1.00 Grade 5 (064,073)	1
47	041358	78801800	Battery, 12 Volt	1
48	050383	08840400	Cable, Negative Battery	1
49	042529	08818400	Wire, Ground	1
50	030428	03042800	Relay	1
51	030817	03081700	Molded Diode Plug - Clear 1 AMP	1

Wheels



ITEM NO.	OLD PART NO.	NEW PART NO.	DESCRIPTION	QTY
1	051235	07131400	Tire/Wheel Assembly, 16 x 6.50 - 8	2
2	048881	07130700	Tire, 16 x 6.50 - 8	1
3	052056	07131600	Assembly, Hub	1
4	052055	07131500	Assembly, Rim	1
5	011191	07520000	Valve Stem Assembly	1
6	052057	07131700	Bolt, .50 - 20 x 1.25	4
7	011058	06525400	Nut-Hex .50-20	4
8	052054	08847000	Key, Square 3/16 x .750	2
9	064095	06409500	Washer-Flat-Steel .781 x 1.500 x .060	2
10	052053	08846900	Nut, Hex 3/4 - 28	2
11	121224	06700200	Pin-Cotter .09 x 1.0	2

Electrical - 18 & 20 HP Units



PG0200

ITEM NO.	OLD PART NO.	NEW PART NO.	DESCRIPTION	QTY
1	038256	03492700	Hour Meter	1
2	088938	08893800	Wire Harness, PRO-300 CV18	1
3	050673	08841200	Light, Indicator	1
4	047649	03492500	Cable, Starter	1
5	046823	08828300	Switch	2
6	027396	02739600	Ignition Switch Assembly	1
7	040216	03042800	Relay	1
8	030817	03081700	Molded Diode Plug - Clear 1 AMP	1
9	082467	08246700	Engine, Kohler CV18	1
10	041358	78801800	Battery, 12 Volt	1
11	020916	02913100	Switch - Neutral Start N.O.	1
12	046219	08828100	Switch, Interlock	1
13	042130	08940600	Cable, Negative Battery	1