



AMP

AMP 24

Parts Manual

Model

916003

916302



THE MANUAL

Before you operate your unit, carefully and completely read the manual supplied with the unit. The contents will provide you with an understanding of safety instructions and controls during normal operation and maintenance.

For your safety and the safety of others always read, understand, and follow all DANGER, WARNING, and CAUTION messages found in manuals and on safety decals.

Hardware descriptions are given in decimals.

Decimals to Fractions			
.063	1/16	.563	9/16
.125	1/8	.625	5/8
.188	3/16	.688	11/16
.250	1/4	.750	3/4
.313	5/16	.813	13/16
.375	3/8	.875	7/8
.438	7/16	.938	15/16
.500	1/2	1.00	1

SERVICE AND REPLACEMENT PARTS

When ordering replacement parts or making service inquiries, know the Model and Serial numbers of your unit.

Numbers are located on the product registration card in the unit literature package. They are printed on a serial number label, located on the frame of your unit.

- Record Unit Model and Serial numbers here:

UNAUTHORIZED REPLACEMENT PARTS

Use only Ariens replacement parts. The replacement of any part on this vehicle with anything other than an Ariens authorized replacement part may adversely affect the performance, durability, or safety of this unit and may void the warranty. Ariens disclaims liability for any claims or damages, whether warranty, property damage, personal injury or death arising out of the use of unauthorized replacement parts.

PRODUCT REGISTRATION

The Ariens dealer must register the product at the time of purchase. Registering the product will help the company process warranty claims or contact you with the latest service information. All claims meeting requirements during the limited warranty period will be honored, whether or not the product registration card is returned. Keep a proof of purchase if you do not register your unit.

Customer Note: If Dealer does not register your product, please fill out, sign and return the product registration card to Ariens or go to www.ariens.com.

YOUR SATISFACTION IS IMPORTANT

Questions? Please follow these helpful steps:

1. Refer to the manual supplied with your unit.
It will guide you through safe and proper operation and maintenance.
It contains specifications on your unit.
If your questions are not answered in this manual, go to step number two.
2. Contact Your Dealer.
Our dealers will be happy to supply any service or advice required to keep your unit operating at peak efficiency.
A factory trained staff is available to support your equipment needs. They stock genuine Ariens parts and lubricants manufactured with the same precision and skill as the original.
If your questions are not resolved by the support staff, ask for the manager or owner.
When contacting your Dealer supply your model and serial numbers.

TO SPEED PARTS ORDERING:

1. Know the model and serial numbers of your unit.
2. Know the part number required.
3. Know the quantity required.
4. Know the part description.

MODELS

Model 916003 (Compact 24)

24" Electric Sno-Thro
Serial No. 000101 and up

Model 916302 (Compact 24)

48V CE, 24" Electric Sno-Thro
Serial No. 000101 and up

TABLE OF CONTENTS

DECALS

Decals 4

MOTOR AND DRIVE

Drive Motor and Belt Drive..... 6

FRAME AND HOUSING

Handlebars and Controls 8

Auger and Chute 10

Discharge Chute Crank 12

Friction Drive 14

Gear Case and Impeller..... 15

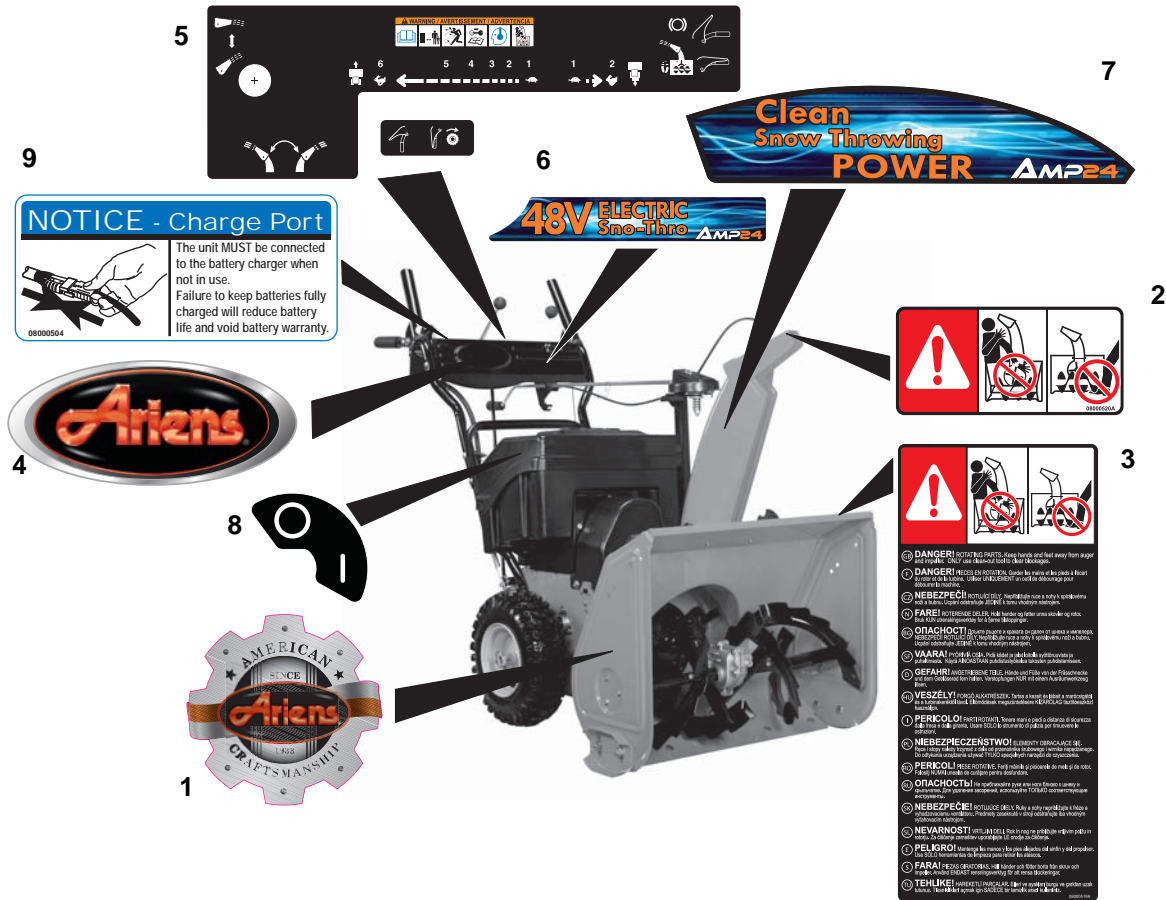
ELECTRICAL

Batteries and Electrical 16

Wiring Diagram 18

DECALS

Model 916003, 302



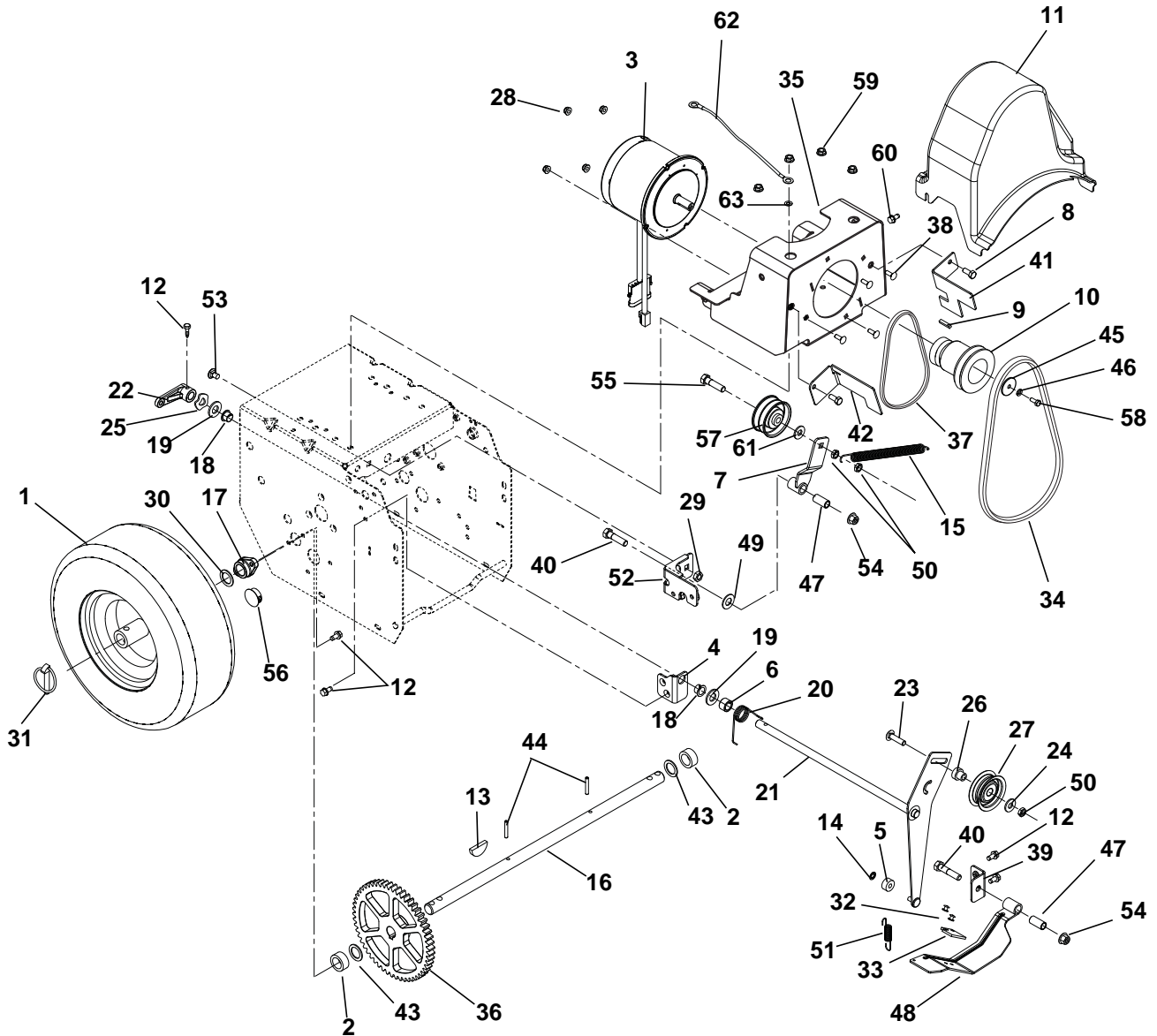
Item	Part No.	Qty.	Description
1	08000513	1	Decal, Ariens Heritage
2	08000520	1	Decal, Danger - Rotating Parts
3	08000519	1	Decal, Danger
4	08000327	1	Decal, Ariens Jewel
5	08000512	1	Decal, Control
6	08000521	1	Decal, AMP 24-48 Volt
7	08000522	1	Decal, AMP 24, Chute
8	08000503	1	Decal, On/Off
9	08000504	1	Decal, Charge Port

PS0295

NOTES

DRIVE MOTOR AND BELT DRIVE

Model 916003, 302



PS0333

Item	Part No.	Qty.	Description
1	07100223	1	Tire/Wheel, RH 4.10-6 Pin K478
	07100224	1	Tire/Wheel LH 4.10-6 Pin K478
	07100725	AR	Tire, 4.10-6 Pin K478
2	05500140	2	Bushing, Sleeve
3	03367400	1	Motor, Electric
4	00495051	1	Bracket, Mount – Idler Arm
5	05500037	1	Bushing, Sleeve
6	05500107	1	Bushing, Sleeve
7	00493600	1	Traction Idler Arm

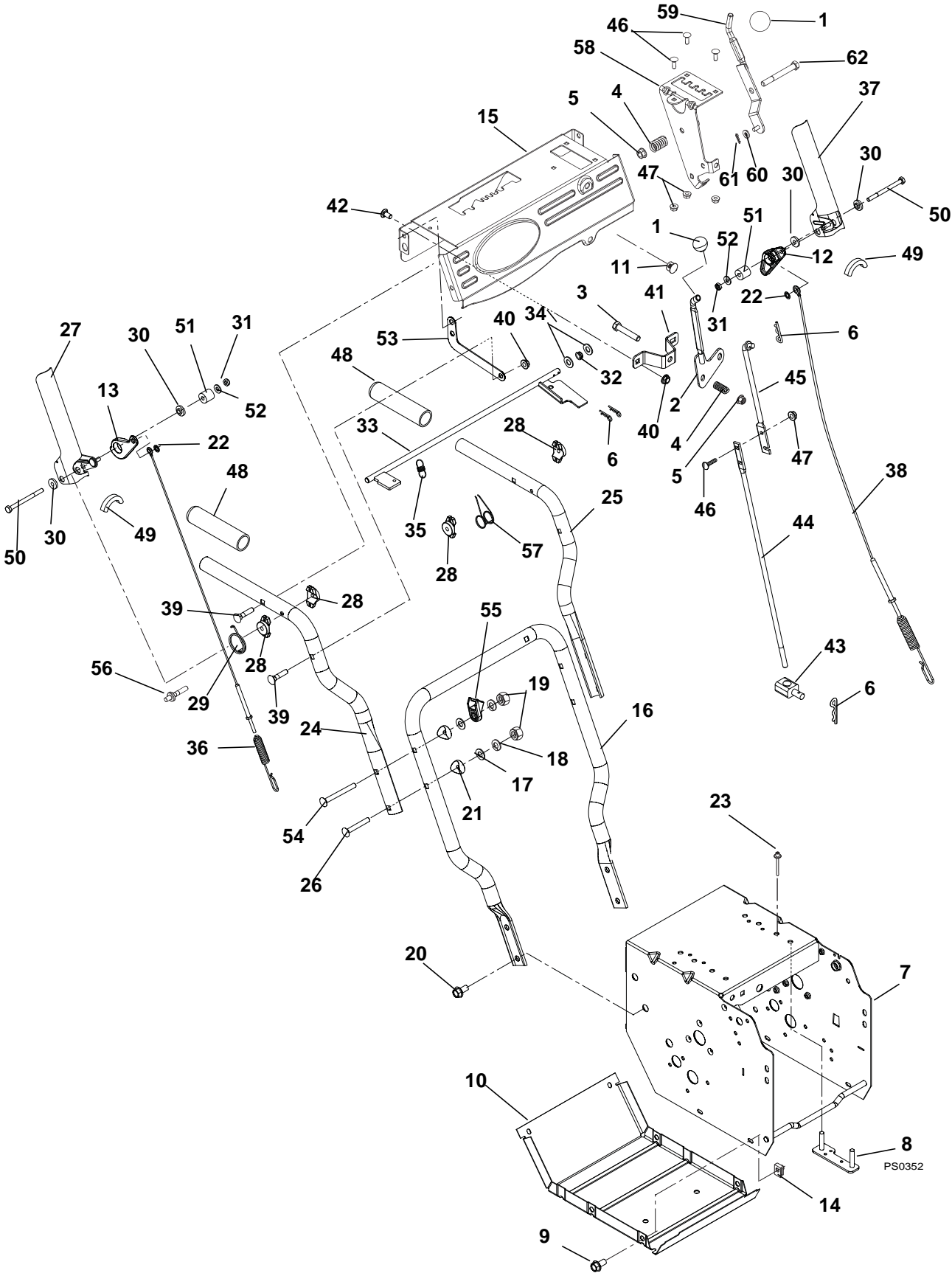
DRIVE MOTOR AND BELT DRIVE

Model 916003, 302

Item	Part No.	Qty.	Description
8	05947000	2	Bolt, Hex .31-18 x .75
9	06607500	1	Key, 5 mm x 25 mm x 5 mm
10	07333100	1	Sheave, Electric Motor
11	03881000	1	Belt Cover
12	07400034	9	Screw, Tapping Hex Washer Head .25-20 x .50
13	06601200	1	Key, Woodruff .25 x .750 x .313 SAE 91
14	05717600	1	Ring, Retaining External .250 x .010
15	08316400	1	Spring, Extension
16	00494200	1	Shaft, Axle
17	05500101	2	Bushing
18	05500026	2	Bushing, Polyliner
19	06441900	2	Washer, Flat Steel .531 x 1.06 x .095
20	08300326	1	Spring, Torsion
21	00495167	1	Attachment Idler Arm
22	01987100	1	Arm, Clutch Attachment
23	06200124	1	Bolt, Round Head Square Short Neck .31-18 x 1.13 Grade 5
24	06435700	1	Washer, Flat Steel .38 x .875 x .083
25	06400005	1	Washer, Wave .50 x .75 x .015, .13 Free Height
26	01213100	1	Spacer, Bearing
27	02457400	1	Idler
28	06543500	4	Nut, Locking Top Flange .25-20
29	06543100	1	Nut, Locking Top Flange .31-18
30	06441400	2	Washer, Flat Steel .754 x 1.125 x .062
31	07053700	2	Pin, Lok
32	06800028	2	Rivet, Pop .187 (included with item 48)
33	00180500	1	Brake Pad (included with item 48)
34	07200513	1	V-Belt HA
35	04077851	1	Weldment, Battery Box Support
36	00657800	1	Spur Gear
37	07200110	1	V-Belt 3L
38	06219900	4	Bolt, Round Head Square Neck .25-20 x .75
39	00495251	1	Bracket, Brake Mount
40	05958500	2	Bolt, Hex .38-16 x 1.75 Grade 5
41	03982451	1	Belt Finger, Left Hand
42	03982351	1	Belt Finger, Right Hand
43	06441400	2	Washer, Flat Steel .754 x 1.125 x .062
44	05800300	2	Pin, Roll .188 x 1.25
45	06443900	1	Washer, Flat Steel .265 x 1.370 x .179
46	06308400	1	Washer, Lock .25 x .062
47	05500106	2	Bushing, Sleeve
48	51600200	1	Brake Arm w/Pad (includes items 32 and 33)
49	06436200	1	Washer, Flat Steel .406 x .812 x .065
50	06500011	3	Nut, Locking Center Jam .31-18
51	08300104	1	Spring, Extension
52	00657051	1	Frame Bracket
53	06212200	1	Bolt, Round Head Square Short Neck .31-18 x .62
54	06542000	2	Nut, Locking Top Flange .38-16
55	05957400	1	Bolt, Hex .31-18 x 1.75 Grade 5
56	07500102	2	Plug, Hole
57	07300525	1	Idler
58	05900044	1	Bolt, Hex M6 x 1.0 x 25 C10.9 EP80
59	06543100	4	Nut, Locking Top Flange .31-18
60	07400104	2	Screw, Tapping Hex Washer Head .25-20 x .50
61	06446300	1	Washer, Flat-Steel .344 x 1.125 x .135
62	03287100	1	Cable, Ground .25 x 13.00 x .31 (302)
63	06310500	1	Washer-Lock Internal .31 (302)

HANDLEBARS AND CONTROLS

Model 916003, 302



HANDLEBARS AND CONTROLS

Model 916003, 302

Item	Part No.	Qty.	Description
1	07533500	2	Knob, Ball Black
2	04149000	1	Shift Lever
3	05963300	1	Bolt, Hex .38-16 x 2.00 Grade 5
4	08335700	2	Spring, Compression
5	06542000	2	Nut, Locking Top Flange .38-16
6	06713500	4	Pin, Hair Internal .08 x .18 x 1.18
7	03884259	1	Frame
8	00188400	2	Strap, Engine Bolt
9	05900019	6	Bolt, Hex Washer Head .25-20 x .75
10	00492359	1	Cover Bottom
11	00529900	1	Hole Plug
12	03386500	1	Left Hand Cam, Interlock
13	03386600	1	Right Hand Cam, Interlock
14	07009000	6	Nut, Retainer .25-20 x .56
15	52002800	1	Control Panel
16	00597451	1	Handlebar, Lower
17	06435700	4	Washer, Flat Steel .38 x .875 x .083
18	06307400	4	Washer, Locking .312 x .097 Heavy
19	06530200	4	Nut, Locking Nylon .312-18
20	07028500	4	Bolt Serrated Hex Flange Washer Head .38-16 x .75 Grade 5
21	07500005	4	Spacer, Handlebar
22	05717600	2	Ring, Retaining, External .25 x .010
23	06800028	2	Rivet, Pop, .187
24	00656251	1	Handlebar, Upper RH
25	00656351	1	Handlebar, Upper LH
26	06221600	3	Bolt, Round Head Square Neck .31-18 x 2.25
27	00398351	1	Paddle, Clutch – RH
28	05500040	4	Spacer, Handlebar
29	08300026	1	Spring, Torsion
30	00399300	4	Bushing, Flange
31	06530900	2	Nut, Jam Nylon .25-20
32	05500020	1	Bushing, Polyliner
33	03387000	1	Interlock Shaft
34	06436200	2	Washer, Flat-Steel .406 x .812 x .065
35	08300432	1	Spring, Extension
36	06900303	1	Cable, Attachment
37	00398151	1	Paddle, Clutch – LH
38	06900304	1	Cable, Traction
39	06200009	2	Bolt, Round Head Square Extra Long Neck .31-18 x 1.50 Grade 5
40	06543100	6	Nut, Locking Top Flange .31-18
41	03886951	1	Bracket, Shift Mount
42	06200007	2	Bolt, Round Head Square Short Neck .31-18 x 1.00
43	00386700	1	Pivot, Shift Rod
44	00656667	1	Rod, Shift Lower
45	04149767	1	Rod, Shift Upper
46	06219900	5	Bolt, Round Head Square Neck .25-20 x .75 Grade 5
47	06543500	5	Nut, Locking Top Flange .25-20
48	07518700	2	Handle Grip
49	07500103	2	Edging, Clutch Paddle
50	05965300	2	Bolt, Hex .25-20 x 3.25
51	00589800	2	Bushing, Sleeve
52	06437300	2	Washer, Flat, Steel .281 x .62 x .065
53	03987551	1	Strap, Charge Port
54	06219400	1	Bolt, Round Head Square Neck .31-18 x 2.50 Grade 5
55	07500128	1	Mount, Plastic Cable
56	07001624	2	Stud, .31-18
57	08300431	1	Spring, Torsion
58	04093651	1	Bracket, Deflector Detent
59	04145500	1	Control, Deflector
60	06437300	1	Washer, Flat Steel .281 x .62 x .065
61	06701900	1	Pin, Hair Internal .06 x .18 x .77
62	05961100	1	Bolt, Hex .38-16 x 3.25

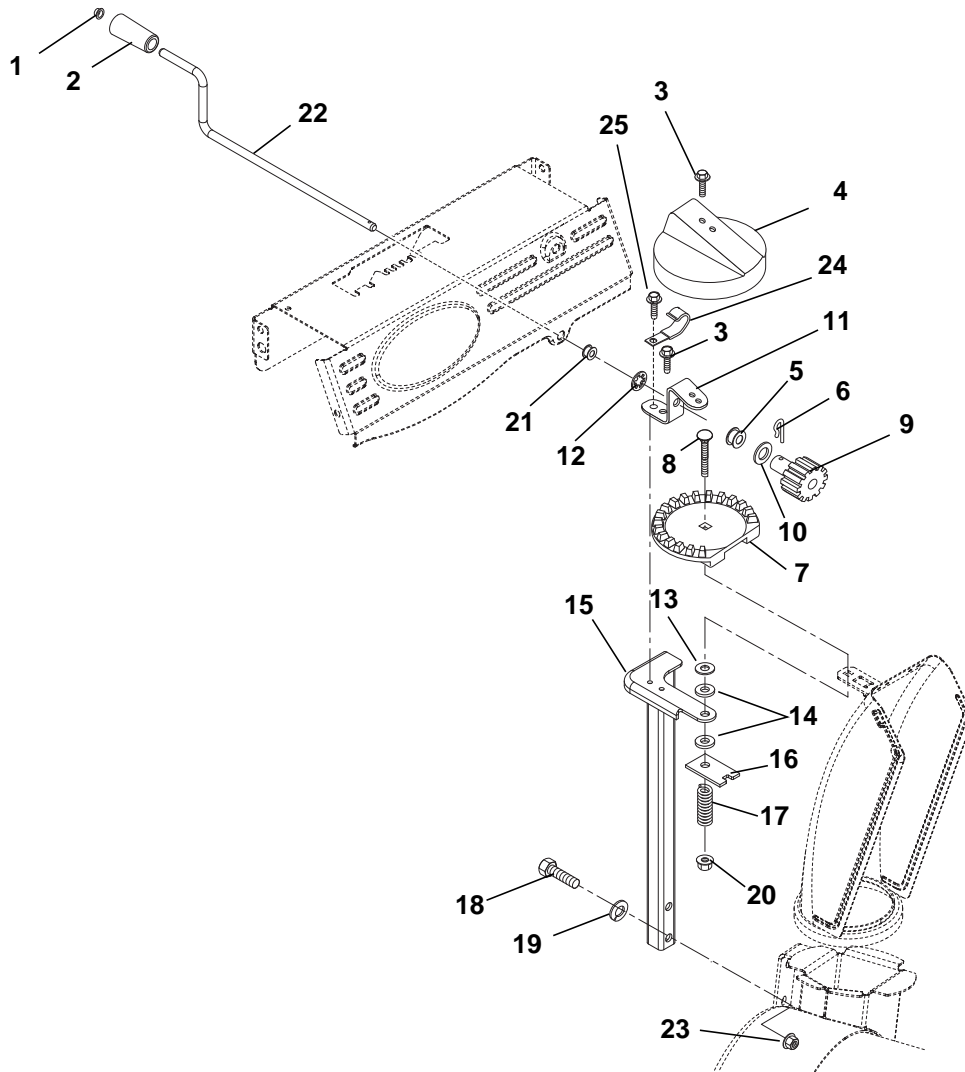
AUGER AND CHUTE

Model 916003, 302

Item	Part No.	Qty.	Description
1	06529700	2	Nut, Locking Center .25-20
2	52002900	1	Chute, Discharge w/Cap and Decal
3	00170200	1	Device, Snow Cleanout
4	06800028	4	Rivet-Pop .187
5	00170300	1	Mount, Snow Cleanout
6	52002600	1	Blower Housing w/Decal, 24"
7	07400034	6	Screw-Tapping Hex Washer Head .25-20 x .50
8	02483859	2	Runner, Double Flange
9	06529600	4	Nut, Locking Center .38-16
10	06435700	4	Washer, Flat Steel .38 x .875 x .083
11	05500109	2	Bushing-Flange, Polyliner
12	05500103	2	Bushing, Rake Shaft
13	53213100	1	Rake Right Hand 24" with Zerk (Includes Items 15)
	53213200	1	Rake Left Hand 24" with Zerk (Includes Items 15)
14	53200500	2	Shear Bolt with Nut (Includes Items 1)
15	07061300	2	Zerk, Fitting .25 x .125 Drive-In
16	07411500	4	Screw, Tapping Hex Washer Head .31-18 x .50
17	06200120	5	Bolt, Round Short Head Square Short Neck .31-18 x .62
18	03884459	1	Scraper Blade 24"
19	06200004	4	Bolt, Round Head Square Short Neck .38-16 x .75
20	06543100	5	Nut, Locking Top Flange .31-18
21	03889400	1	Baffle
22	06426600	2	Washer, Flat Steel .281 x 1.000 x .063
23	05501012	2	Bushing, Sleeve
24	04115359	1	Bracket, Cable Anchor
25	05500028	1	Bushing, Polyliner
26	06543500	2	Nut, Locking Top Flange .25-20
27	00389000	1	Rod, Deflector Cap
28	08300013	1	Spring, Compression
29	06900427	1	Cable, Deflector

DISCHARGE CHUTE CRANK

Model 916003, 302



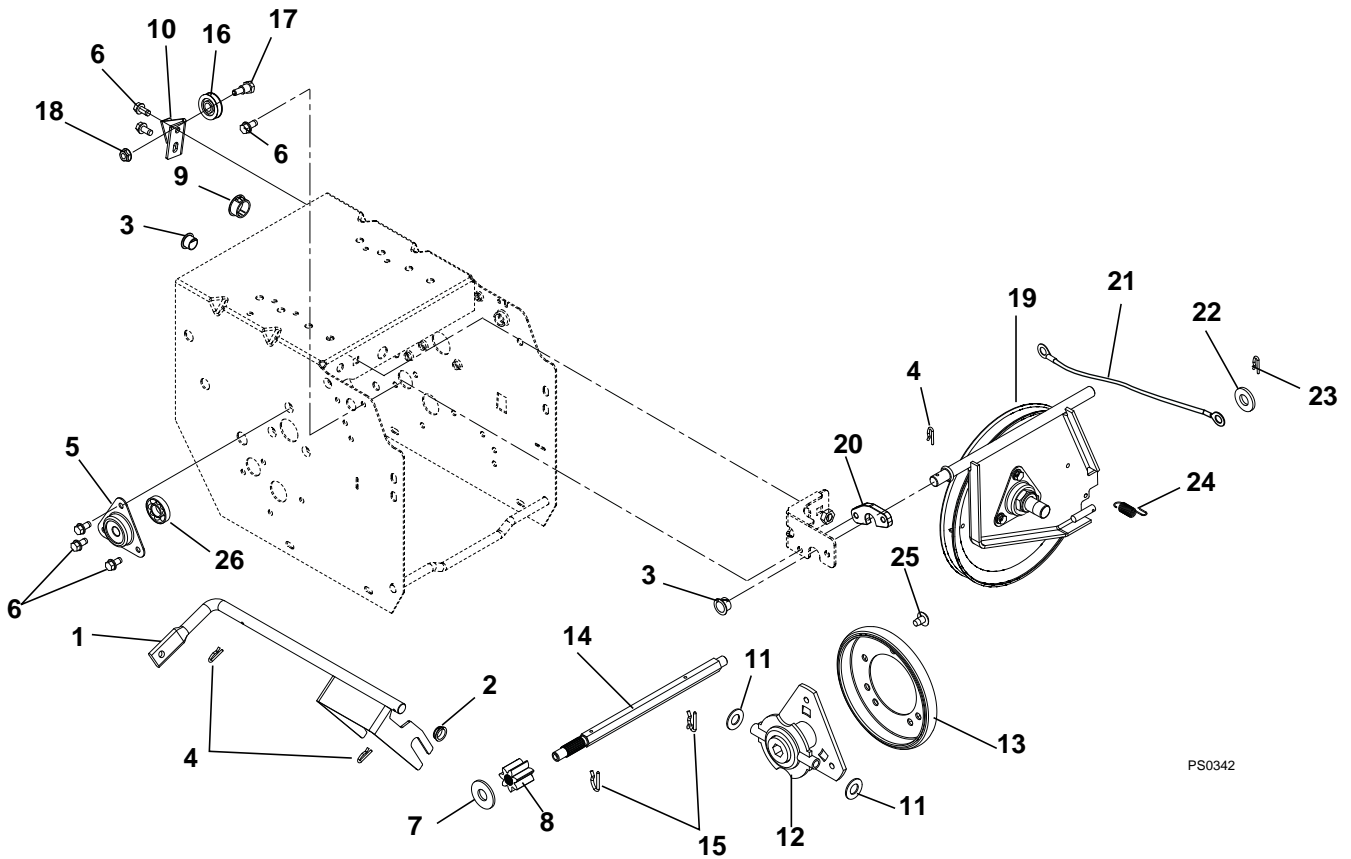
DISCHARGE CHUTE CRANK

Model 916003, 302

Item	Part No.	Qty.	Description
1	01019800	1	Cap, .38 Rod
2	07500001	1	Knob, Chute Crank
3	07400034	3	Screw, Tapping, Hex Washer Head .25-20 x .50
4	03223000	1	Cover, Gear
5	05500021	1	Bushing, Polyliner
6	06714500	1	Pin, Spring Clip
7	03222900	1	Gear, Chute
8	06224400	1	Bolt, Round Head Square Neck .38-16 x 2.50 Grade 5
9	52000100	1	Bracket with Pinion Gear (Contains Items 5, 10 – 12)
10	06400009	1	Washer, Thrust .625 x 1.0 x .03
11	01972451	1	Bracket, Pinion Gear
12	03224300	1	Push Nut
13	06439300	1	Washer, Flat Steel .38 x 1.50 x .062
14	01123800	2	Friction Washer
15	03883751	1	Chute Pedestal
16	00398000	1	Friction Plate
17	08320900	1	Spring, Compression
18	05958500	2	Bolt, Hex .38-16 x 1.75 Grade 5
19	06308800	2	Washer, Lock .38 x .094
20	06542000	1	Nut, Locking Top Flange .38-16
21	05500020	1	Bushing, Polyliner
22	03887100	1	Rod, Chute Crank
23	07001612	2	Nut, Insert .38-16
24	06909400	1	J-Clamp
25	07400104	1	Screw, Tapping Hex Washer Head .25-20 x .50

FRICTION DRIVE

Model 916003, 302

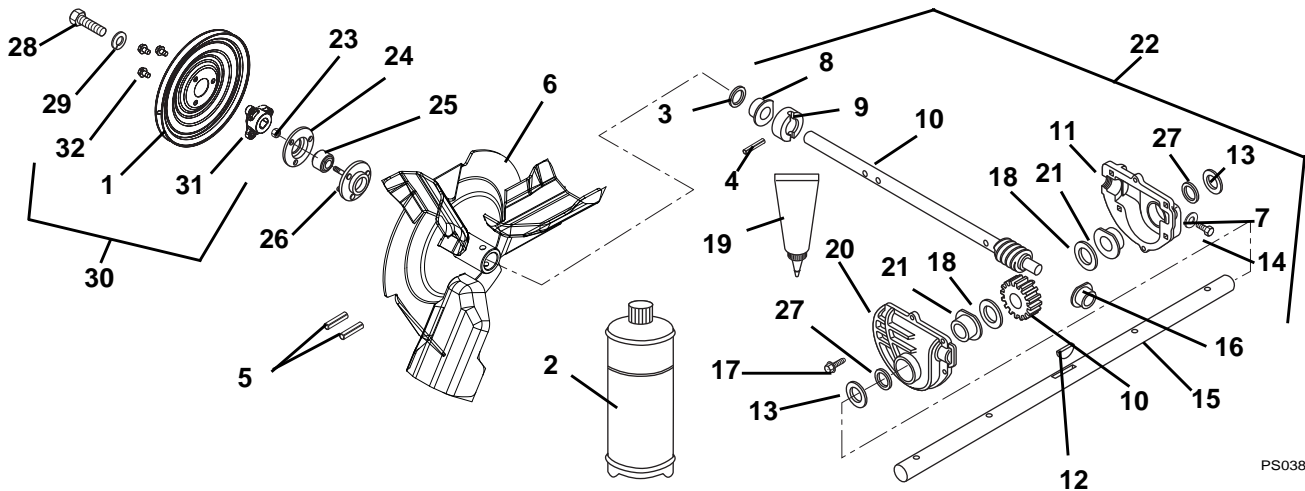


PS0342

Item	Part No.	Qty.	Description
1	00656951	1	Shift Fork
2	05500028	1	Bushing, Polyliner
3	05500026	2	Bushing, Polyliner
4	06944800	3	Clip, Spring
5	00383000	2	Flange, Bearing
6	07400034	10	Screw, Tapping Hex Washer Head .25-20 x .50
7	06442000	1	Washer, Flat Steel .563 x 1.38 x .109
8	00493900	1	Gear, Pinion w/Spline
9	07500023	1	Plug, Hole
10	00373051	1	Bracket, Cable Pulley
11	06439200	2	Washer, Flat-Steel .505 x 1.00 x .062
12	00383100	1	Carrier, Drive Disc
13	00170800	1	Friction Disc
14	04149500	1	Hex Shaft w/spline
15	06714500	2	Pin, Spring Clip
16	07300012	1	Pulley, Cable
17	07000021	1	Bolt, Shoulder .375 x .375 x .25-20
18	06543500	1	Nut, Locking Top Flange .25-20
19	52100200	1	Plate, Swing Assembly
20	05500113	1	Spacer, Swing Plate
21	06900313	1	Cable, Traction - Tractor
22	06437200	1	Washer, Flat Steel .344 x .688 x .065
23	06713500	1	Pin, Hair Internal .08 x .18 x 1.18
24	08300036	1	Spring, Extension
25	07400009	3	Screw, Tapping Serrated Round Head Torx .31-18 x .50
26	05435200	2	Bearing, Ball

GEAR CASE AND IMPELLER

Model 916003, 302

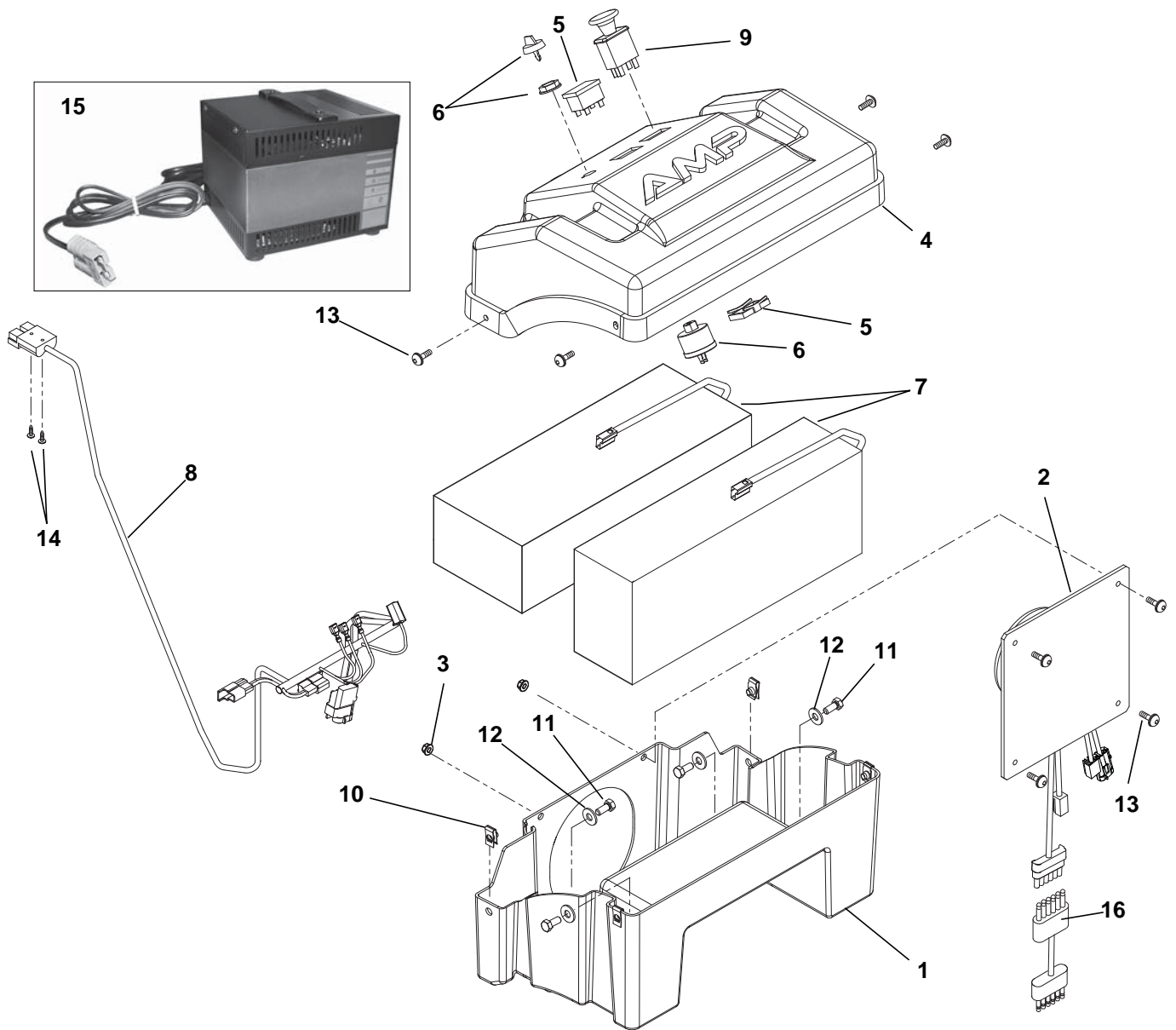


PS0381

Item	Part No.	Qty.	Description
1	00268951	1	Pulley, Single Groove
2	00068800	1	Ariens 8 oz. Bottle of L3 Lube (Gear Case Capacity = 2.5 oz.)
3	05600004	1	Seal, Oil
4	05804900	1	Pin, Groove .188 x 1.25 Type E
5	05803700	2	Pin, Roll .25 x 1.75
6	03835551	1	Impeller
7	06442500	1	Washer, Fiber .437 x .656 x .032
8	05511200	1	Bushing, Flange
9	00272100	1	Thrust Collar
10	53212500	1	Shaft & Worm Gear Set
11	00291100	1	Gear Case Casting, Machined Left Hand
12	06609300	1	Key, Woodruff .19 x .63 Hardened #61
13	06439000	2	Washer, Flat-Steel .812 x 1.50 x .135
14	07417000	1	Screw, Tapping Rolok .38-16 x .75
15	00263000	1	Shaft, Rake 24" (014, 307)
16	05520600	1	Bushing, Flange
17	07412400	6	Screw, Tapping Hex Washer Head .25-20 x 1.00
18	06441500	2	Washer, Flat-Steel .755 x 1.375 x .062
19	00031700	1	Loctite Gasket 518
20	00291200	1	Gear Case Casting, Machined Right Hand
21	05531100	2	Bushing, Flange
22	53212700	1	Gear Case Assembly - 24" (contains 3-4, 7-12, 14-21, 27)
23	06529700	3	Nut, Locking Center .25-20
24	01014200	1	Bearing Flange
25	05406300	1	Bearing, Ball
26	00428700	1	Bearing, Flange
27	05618900	2	Seal, Oil
28	05947300	1	Bolt, Hex .31-24 x .75 Grade 5
29	06307400	1	Washer, Locking .312 x .097 Heavy
30	52001800	1	Pulley w/Hub (Includes items 1, 31, 32)
31	00268901	1	Hub, Pulley
32	07411500	3	Screw, Tapping Hex Washer Head .31-18 x .50

BATTERIES AND ELECTRICAL

Model 916003, 302



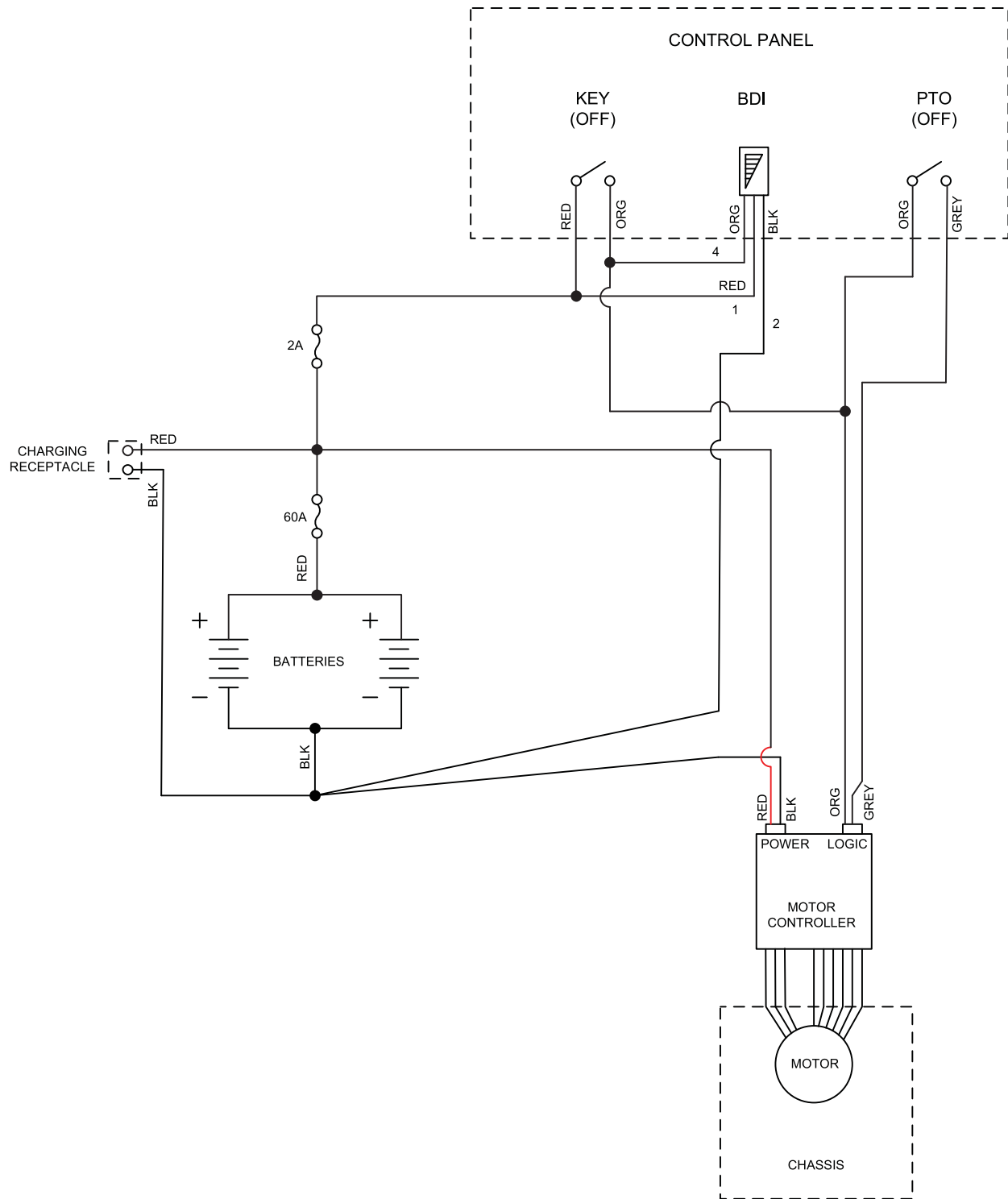
BATTERIES AND ELECTRICAL

Model 916003, 302

Item	Part No.	Qty.	Description
1	03938600	1	Box, Battery Bottom
2	03829500	1	Assembly, Drive Controller
3	06543500	4	Nut, Locking Top Flange .25-20
4	03938800	1	Cover, Battery Box
5	03796700	1	Meter, Battery Discharge
6	03796600	1	Switch, Ignition
7	51600300	2	Battery, SBS Subpack
8	04168600	1	Harness, Wire
9	01545600	1	Switch, Clutch
10	07009000	4	Nut, Retainer .25-20 x .56
11	05947000	4	Bolt, Hex .31-18 x .75
12	06435700	4	Washer, Flat Steel .38 x .875 x .083
13	05900042	8	Screw, Socket Button Head .25-20 x .62
14	07400102	2	Screw, Tapping Pan Head 6-32 x .75
15	03822200	1	Charger, Battery 110V (003)
	03822300	1	Charger, Battery 230V (302)
16	04197000	1	Harness, Motor/Controller Jumper (302)

WIRING DIAGRAM

Model 916003, 302





Ariens Company
655 West Ryan Street
Brillion, WI 54110-1072
920-756-2141
Fax 920-756-2407
www.ariens.com