



Zoom

Parts Manual



Models

915085 – 2350

915087 – 1840

915089 – 1634

915091 – 1634

THE MANUAL

Before you operate your unit, carefully and completely read manuals supplied with the unit. The contents will provide you with an understanding of safety instructions and controls during normal operation and maintenance.

For your safety and the safety of others always read, understand, and follow all DANGER, WARNING, and CAUTION messages found in manuals and on safety decals.

Hardware descriptions are given in decimals.

Decimals to Fractions			
.063	1/16	.563	9/16
.125	1/8	.625	5/8
.188	3/16	.688	11/16
.250	1/4	.750	3/4
.313	5/16	.813	13/16
.375	3/8	.875	7/8
.438	7/16	.938	15/16
.500	1/2	1.00	1

SERVICE AND REPLACEMENT PARTS

When ordering replacement parts or making service inquiries, know the Model and Serial numbers of your unit and engine.

Numbers are located on the product registration card in the unit literature package. They are printed on a serial number label, located on the frame of your unit.

• Record Unit Model and Serial numbers here:

• Record Engine Model and Serial numbers here:

UNAUTHORIZED REPLACEMENT PARTS

Use only Ariens replacement parts. The replacement of any part on this vehicle with anything other than an Ariens authorized replacement part may adversely affect the performance, durability, or safety of this unit and may void the warranty. Ariens disclaims liability for any claims or damages, whether warranty, property damage, personal injury or death arising out of the use of unauthorized replacement parts.

PRODUCT REGISTRATION

The Ariens dealer must register the product at the time of purchase. Registering the product will help the company process warranty claims or contact you with the latest service information. All claims meeting requirements during the limited warranty period will be honored, whether or not the product registration card is returned. Keep a proof of purchase if you do not register your unit.

Customer Note: If Dealer does not register your product, please fill out, sign and return the product registration card to Ariens or go to www.ariens.com.

YOUR SATISFACTION IS IMPORTANT

Questions? Please follow these helpful steps:

1. Refer to the manuals supplied with your unit.
They will guide you through safe and proper operation and maintenance.
They contain specifications on your unit.
If your questions are not answered in these manuals, go to step number two.
2. Contact Your Dealer.
Our dealers will be happy to supply any service or advice required to keep your unit operating at peak efficiency.
A factory trained staff is available to support your equipment needs. They stock genuine Ariens parts and lubricants manufactured with the same precision and skill as the original.
If your questions are not resolved by the support staff, ask for the manager or owner.
When contacting your Dealer supply your model and serial numbers.

TO SPEED PARTS ORDERING:

1. Know the model and serial numbers of your unit.
2. Know the part number required.
3. Know the quantity required.
4. Know the part description.

MODELS

Domestic

Model 915085 (2350)

23hp Kohler with 50" Mower
Serial No. 050000 and up

Model 915087 (1840)

18hp Kohler with 40" Mower
Serial No. 050000 and up

Model 915089 (1634)

16hp Kohler with 34" Mower
Serial No. 050000 and up

Model 915091 (1634)

16hp Briggs & Stratton with 34" Mower
Serial No. 050000 and up

TABLE OF CONTENTS

DECALS

Decals 4

MAIN FRAME AND TRANSAXLES

Frame, Hood, Footrest, Caster and Tires 6

Seat and Support 7

Transaxle, Dump Valves and Rear Wheels 8

OPERATOR CONTROLS

Parking Brake. 9

Parking Brake. 10

Steering Controls 12

Steering Controls 14

FUEL TANKS AND ENGINE

Engine, Exhaust, Belt and Idlers 16

Fuel Tank 18

ELECTRICAL SYSTEM

Continuity Diagrams. 19

Electrical System 20

Wiring Diagrams. 22

MOWER DECKS

Mower Deck Lift 23

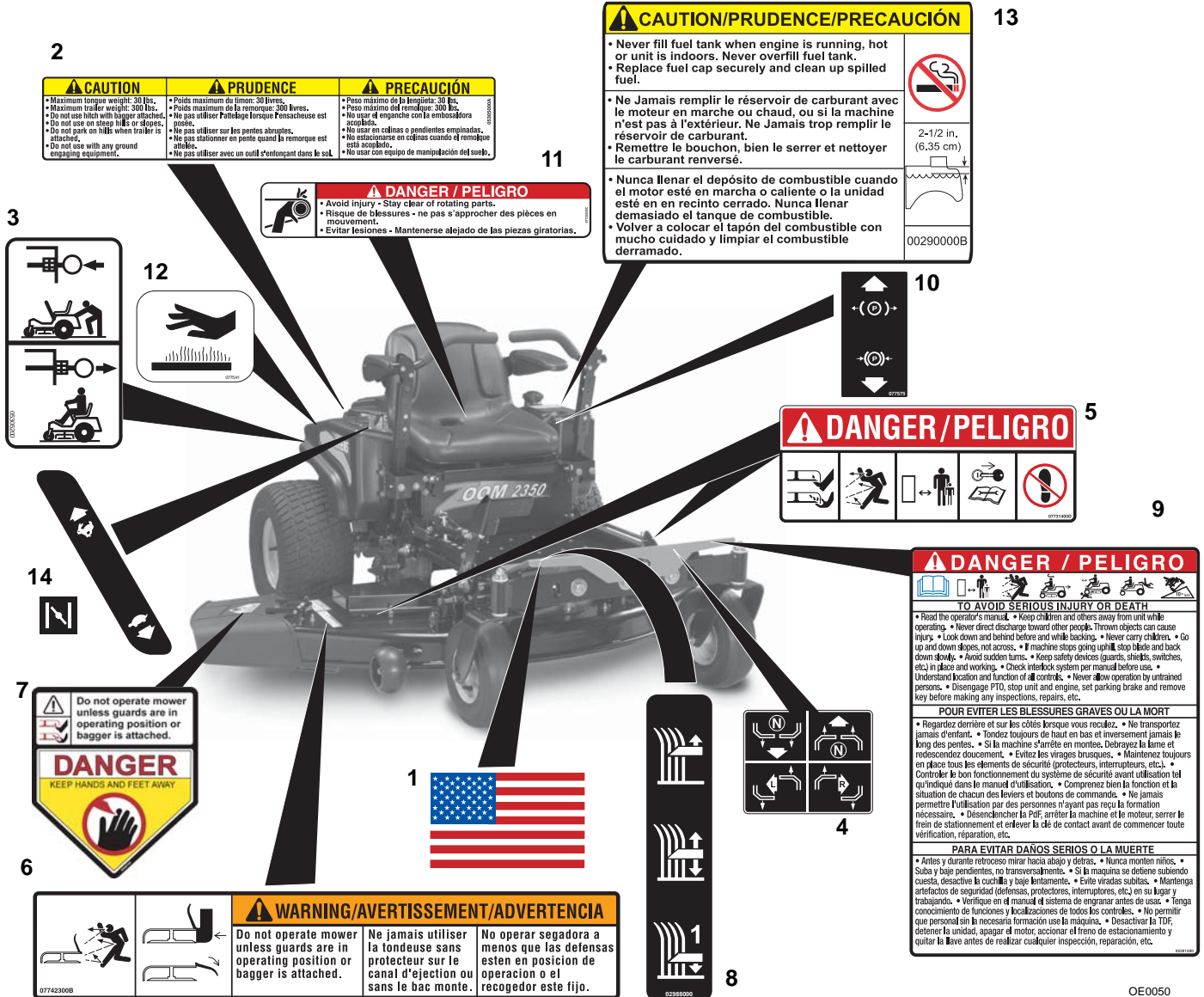
Mower Deck, Belt, Idlers and Blades 24

34" Mower Deck, Belt, Idlers and Blades. 26

Anti-Scalp Wheels 28

DECALS-SAFETY

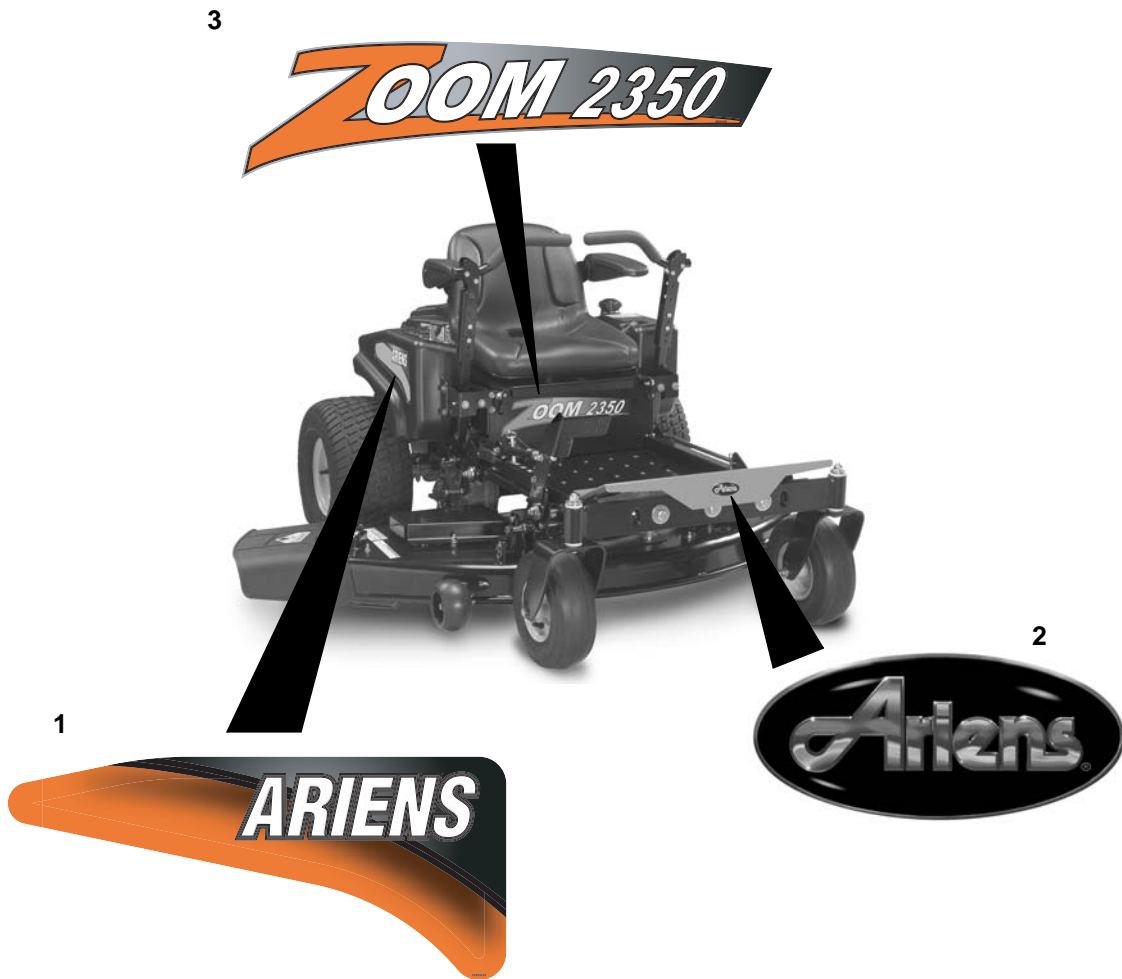
Model 915085, 087, 089, 091



Item	Part No.	Qty.	Description
1	05305100	1	Decal, American Flag
2	05305000	1	Decal, Trailer Hitch
3	05305200	2	Decal, Transmission Disconnect
4	07757600	1	Decal, Instructional Steering
5	07731400	2	Decal, Mower Pan Head Danger
6	07742300	1	Decal, Warning
7	08088300	1	Decal, CPSC Danger
8	00384700	1	Decal, Cut Height
9	05301500	1	Decal, Bilingual Danger
10	07757500	1	Decal, Parking Brake Lever
11	07735200	1	Decal, Danger
12	07754100	1	Decal, Hot Surface
13	00290000	1	Decal, Fuel Warning
14	05301400	1	Decal, Control

DECALS-STYLE

Model 915085, 087, 089, 091

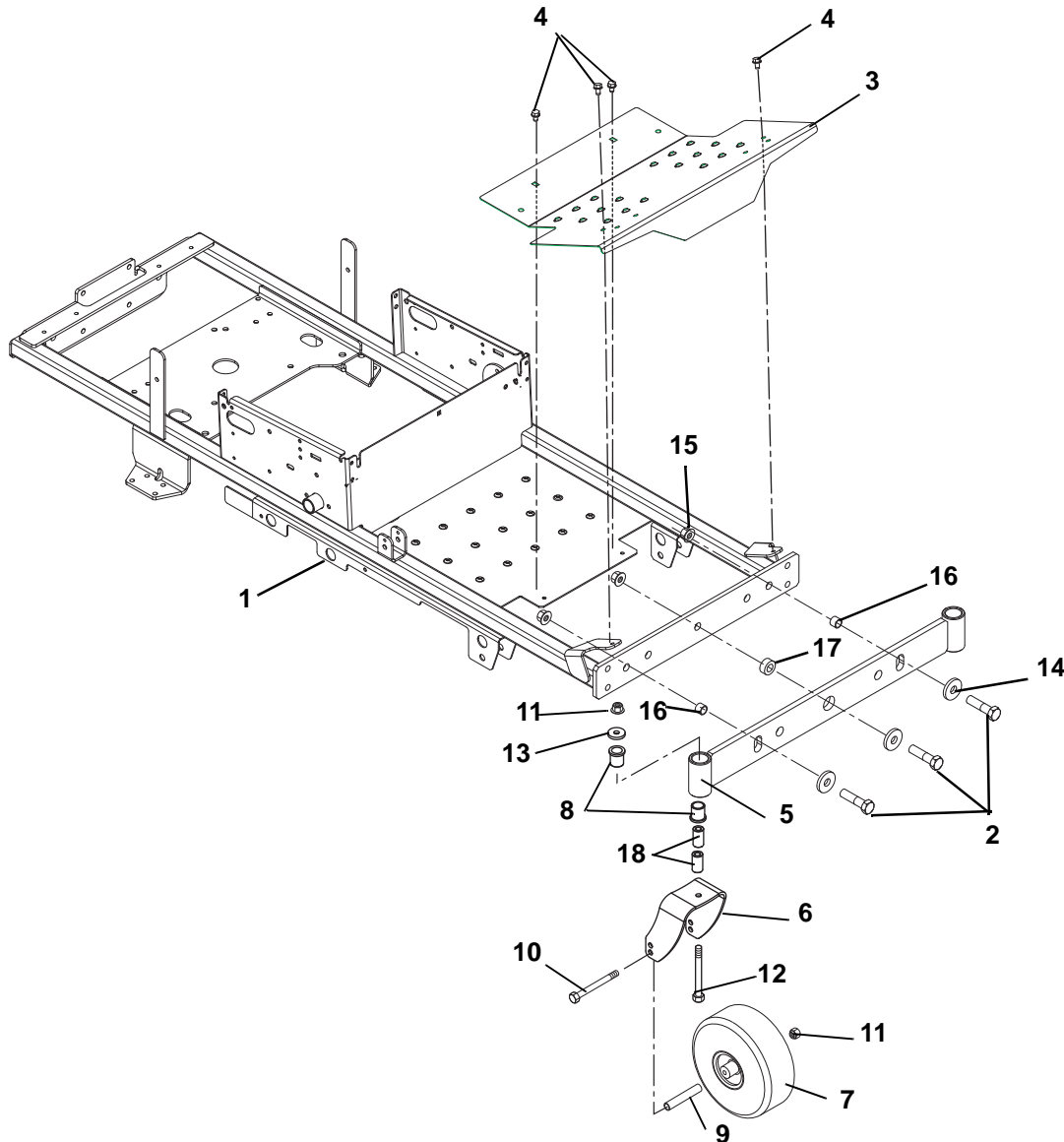


PE0250

Item	Part No.	Qty.	Description
1	00654500	1	Decal, Zoom Right Hand Tank
	00654600	1	Decal, Zoom Left Hand Tank
2	05303100	1	Decal, Ariens Jewel
3	00654300	1	Decal, 2350 Zoom
	00654100	1	Decal, 1840 Zoom
	00653800	1	Decal, 1634 Zoom

FRAME, FOOTREST, CASTERS AND TIRES

Model 915085, 087, 089, 091

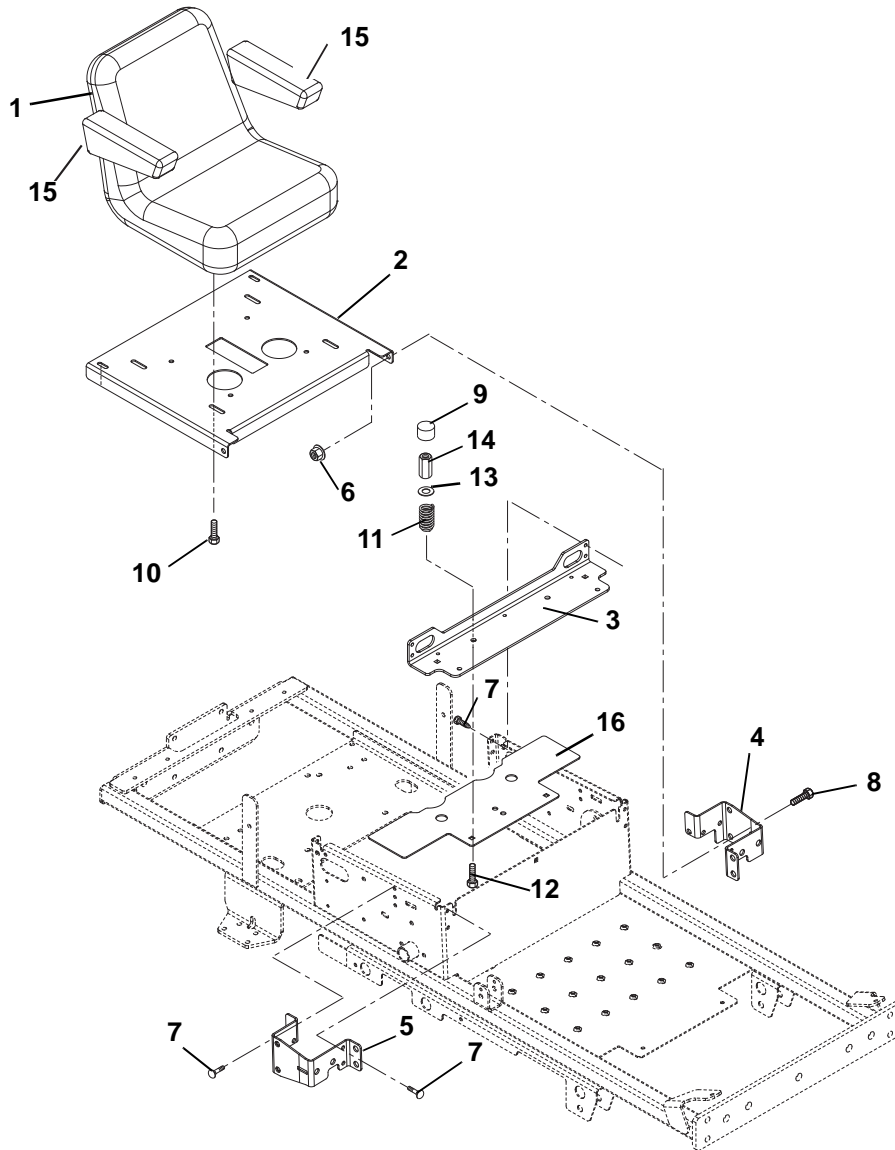


PE1200

Item	Part No.	Qty.	Description
1	00600951	1	Weldment, Frame
2	05930700	3	Bolt, Hex .62-11 x 2.25 Grade 8
3	00460559	1	Footrest, MZ
4	07411500	4	Screw, Tapping .31-18 x .50
5	00475651	1	Weldment, Front Axle
6	00469351	2	Fork, Caster
7	07100124	2	Wheel/Tire Assembly, 11.0 x 4.0 x 5.0, Monitor
8	05533600	4	Bushing, Flange 1.00 x 1.25 x 1.50 x 1.50
9	00278500	2	Spacer, Wheel
10	05964400	2	Bolt, Hex .50-13 x 6.50 Grade 5
11	06500010	4	Nut, .50-13 Nyloc Flange
12	05962200	2	Bolt, Hex .50-13 x 5.00 Grade 5
13	06436400	2	Washer, Flat Steel .511 x 1.441 x .125
14	06435200	3	Washer, Flat .640 x 1.81 x .250
15	06500019	3	Nut, Nyloc Flange .62-11
16	00271800	2	Spacer, .750 D x .558 Long
17	01600400	1	Bushing, Axle Pivot
18	00363100	4	Spacer, Caster Fork

SEAT AND SEAT SUPPORT

Model 915085, 087, 089, 091

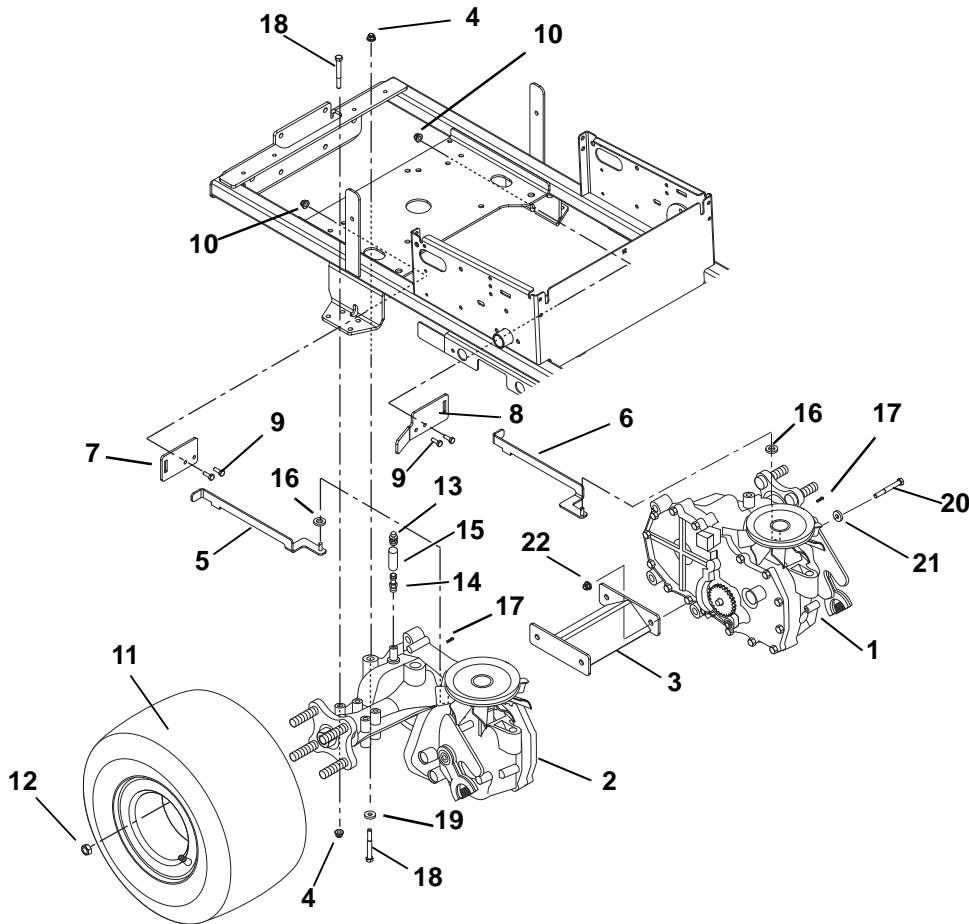


PE1212

Item	Part No.	Qty.	Description
1	00366300	1	Seat with Arm
2	03369351	1	Seat Plate
3	00478351	1	Bracket, Seat Spring
4	00503300	1	Bracket, RH Steering Stop
5	00503400	1	Bracket, LH Steering Stop
6	06542000	2	Nut, Locking Flange .38-16
7	07411500	10	Screw, Tapping .31-18 x .50
8	07056700	2	Bolt, Shoulder .375-16 x 1.50
9	00337700	2	Hub Cap
10	05900033	4	Bolt-Hex .31-18 x 1.00 Grade 5
11	08300021	2	Spring, Seat
12	06212100	2	Bolt, Round Head Square Neck .31-18 x 1.50 Grade 5
13	06439100	4	Washer-Flat-Steel .328 x .87 x .179
14	06500015	2	Nut, Coupling 5/16-18 x 1 .75
15	59204500	2	Arm Rest
16	00676551	1	Guard, Finger

TRANSAXLE, DUMP VALVES AND REAR WHEELS

Model 915085, 087, 089, 091

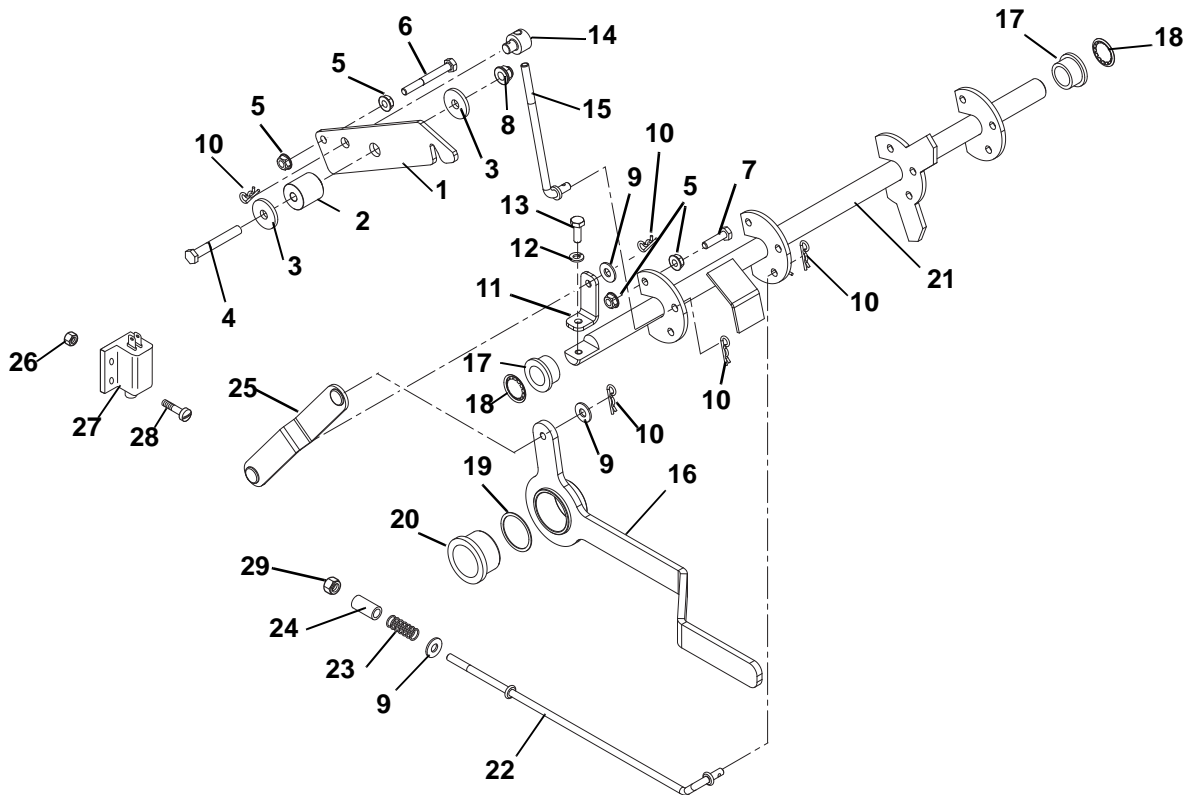


PE1240

Item	Part No.	Qty.	Description
1	00498100	1	EZT, Left Hand Transaxle-Hydrogear (For service please contact Hydro-Gear) (085, 087)
	00689100	1	EZT, Left Hand Transaxle-Hydrogear (For service please contact Hydro-Gear) (089, 091)
2	00498200	1	EZT, Right Hand Transaxle-Hydrogear (For service please contact Hydro-Gear) (085, 087)
	00689200	1	EZT, Right Hand Transaxle-Hydrogear (For service please contact Hydro-Gear) (089, 091)
3	00604151	1	Weldment, Transaxle Support
4	06545400	10	Nut 5/16-18 Flange Nyloc
5	00580700	1	Weldment, Dump Valve (RH)
6	00580800	1	Weldment, Dump Valve (LH)
7	00582051	1	Bracket, Dump Valve
8	00581951	1	Bracket, Dump Valve/Clutch Stop (085)
	00617651	1	Clutch Stop (087, 089, 091)
9	05946800	4	Bolt-Hex .25-20 x .75 Grade 5
10	06535000	4	Nut, Locking Nylon .250-20
11	07100233	2	Assembly, Tire 18 x 8.5-8 (085)
	07100123	2	Assembly, Tire Wheel 18 x 8.5-8 CTR (087)
	07100310	2	Assembly, Tire/Wheel 18 x 6.5-8 CTR (089, 091)
12	06535000	8	Nut, Lug .50-20
13	07026400	2	Cap, Vent .50
14	07026300	2	Fitting, Straight .50
15	01543100	2	Hose, Vent
16	06439500	2	Washer-Flat-Steel .265 x .50 x .087
17	06701900	2	Pin-Hair-Internal .06 x .18 x .77
18	05960600	10	Bolt, Hex .31-18 x 2.75
19	06439100	2	Washer, Flat Steel .328 x .87 x .179
20	05958400	4	Bolt, Hex .38-16 x 2.50 Grade 5
21	06444000	4	Washer, Flat Steel .406 x 1.00 x .188
22	06545500	4	Nut, .38-16 Nyloc Flange

PARKING BRAKE

Model 915085, 087, 089, 091 Serial Numbers Less than 50,000

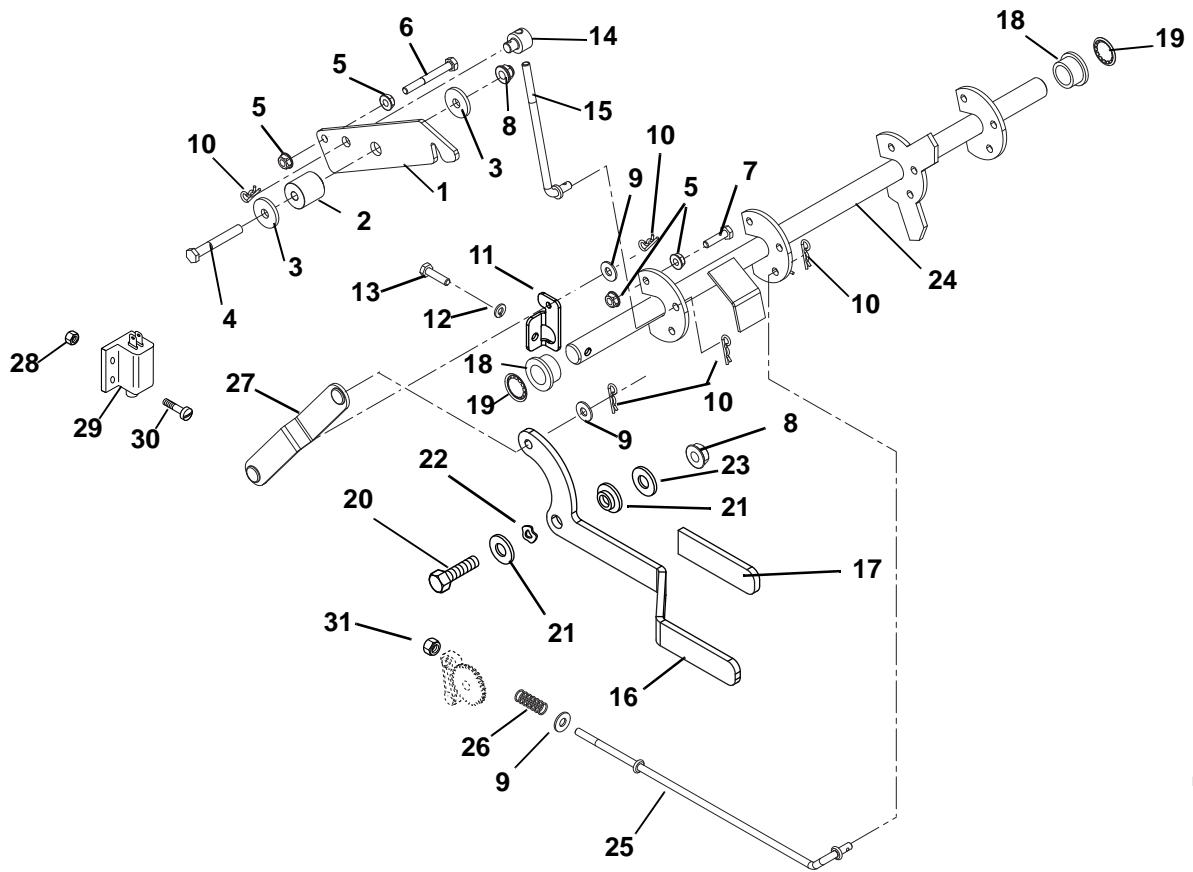


PE1261

Item	Part No.	Qty.	Description
1	00476251	2	Latch, Neutral
2	00476300	2	Spacer
3	06446300	4	Washer, Flat Steel .344 x 1.125 x .135
4	05963700	2	Bolt, Hex .31-18 x 2.25 Grade 5
5	06530100	4	Nut, Locking Flange .250-20
6	05956700	1	Bolt, Hex .25-20 x 2.25 Grade 5
7	05947700	1	Bolt, Hex .25-20 x 1.00 Grade 5
8	06545400	2	Nut, Flange Nyloc 5/16-18
9	06435800	4	Washer, Flat Steel .312 x .734 x .065
10	06713500	8	Pin, Hair Internal .08 x .18 x 1.18
11	00477851	1	Crank, Parking Brake
12	06308400	1	Washer, Locking .25 x .062 Regular
13	05946800	1	Bolt, Hex .25-20 x .75 Grade 5
14	01596400	1	Trunnion, Brake
15	00349800	1	Brake, Link
16	00477200	1	Lever, Park Brake
17	05503900	2	Bushing, Flanged .750 x 1.000 x .625 x 1.250
18	07000036	2	Push Nut, .745 Shaft
19	06400017	1	Washer, Nylon
20	00477500	1	Bushing, Parking Brake
21	00477700	1	Weldment, Brake Shaft
22	00349700	2	Brake Link
23	08300600	2	Spring, Compression .045 x .50 x 1.187
24	00364900	2	Bushing
25	00478000	1	Link, Parking Brake
26	06536000	2	Nut, Locking Nylon 10-24 with Insert
27	03606600	1	Switch, Double Pole
28	06116900	2	Screw, Machine 10-24 x .75
29	06531000	2	Nut, Locking-Nylon .250-20

PARKING BRAKE

Model 915085, 087, 089, 091 Serial Numbers 50,000 and Up



PE1262

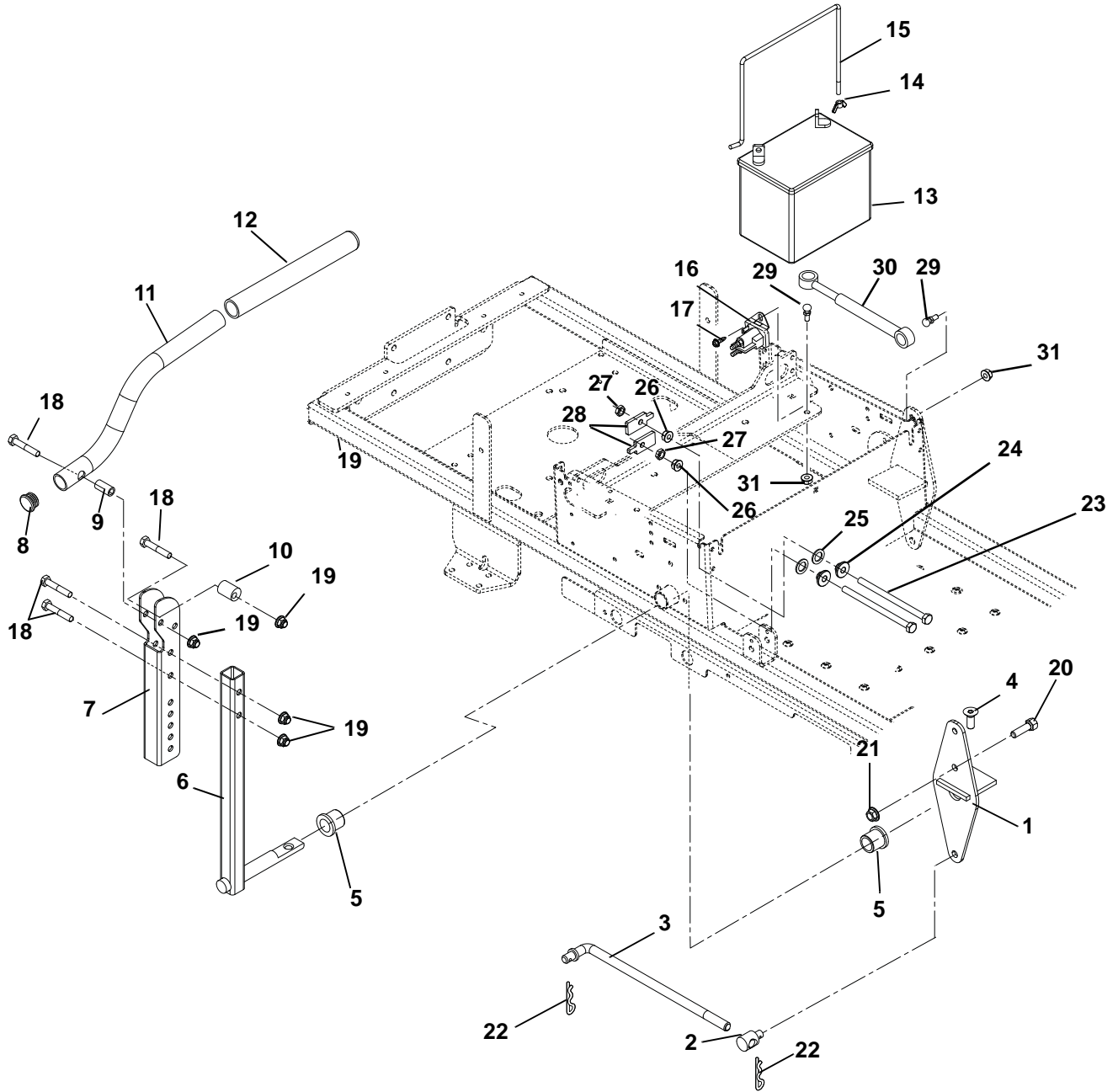
PARKING BRAKE

Model 915085, 087, 089, 091 Serial Numbers 50,000 and Up

Item	Part No.	Qty.	Description
1	00476251	2	Latch, Neutral
2	00476300	2	Spacer
3	06446300	4	Washer, Flat Steel .344 x 1.125 x .135
4	05963700	2	Bolt, Hex .31-18 x 2.25 Grade 5
5	06530100	4	Nut, Locking Flange .250-20
6	05956700	1	Bolt, Hex .25-20 x 2.25 Grade 5
7	05947700	1	Bolt, Hex .25-20 x 1.00 Grade 5
8	06545400	3	Nut, Flange Nyloc 5/16-18
9	06435800	4	Washer, Flat Steel .312 x .734 x .065
10	06713500	8	Pin, Hair Internal .08 x .18 x 1.18
11	00872051	1	Crank, Parking Brake
12	06308400	1	Washer, Locking .25 x .062 Regular
13	05947700	1	Bolt, Hex .25-20 x 1.00 Grade 5
14	01596400	1	Trunnion, Brake
15	00349800	1	Brake, Link
16	00672251	1	Handle, Parking Brake
17	07523000	1	Grip, Parking Brake
18	05503900	2	Bushing, Flanged .750 x 1.000 x .625 x 1.250
19	07000036	2	Push Nut, .745 Shaft
20	05957400	1	Bolt, Hex .31-18 x 1.75 Grade 5
21	05515400	2	Bushing, Flange .325 x .501 x .250 x 1.12
22	06400005	1	Washer, Wave .50 x .75 x .015
23	06439100	1	Washer, Flat Steel, .328 x .87 x .179
24	00477700	1	Weldment, Brake Shaft
25	00667200	2	Rod, Brake
26	08300600	2	Spring, Compression .045 x .50 x 1.187
27	00478000	1	Link, Parking Brake
28	06536000	2	Nut, Locking Nylon 10-24 with Insert
29	03606600	1	Switch, Double Pole
30	06116900	2	Screw, Machine 10-24 x .75
31	06531000	2	Nut, Locking-Nylon .250-20

STEERING CONTROLS

Model 915085, 087, 089, 091 Less than 50,000



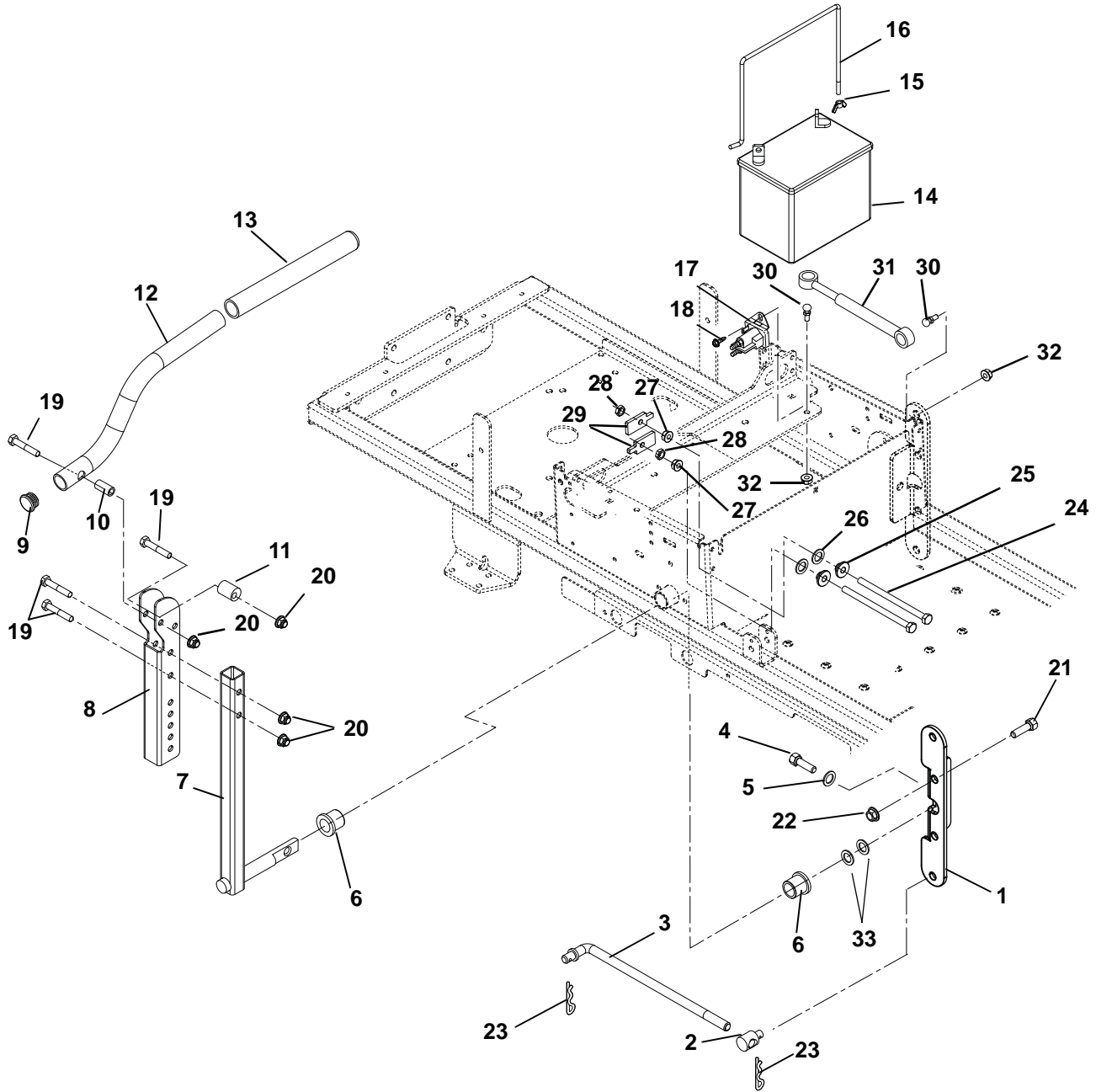
STEERING CONTROLS

Model 915085, 087, 089, 091 Less than 50,000

Item	Part No.	Qty.	Description
1	00477451	2	Weldment, Control Link
2	02493000	2	Pivot, Rod
3	00292100	2	Link, Wireform
4	05900018	2	Bolt, .38-16 x 1 FSHCS Plain
5	01591100	4	Bushing, 1.00 x .75 x 1.00
6	00477151	2	Weldment, Control Arm
7	00481751	2	Channel, Upper Handlebar
8	07533300	2	Caplug, Handlebar
9	00364900	2	Bushing
10	00372300	2	Eccentric
11	00354951	2	Handlebar
12	01570000	2	Grip, Handlebar
13		1	Battery, Exide Sealed Maintenance Free U1-250 (Purchase replacement locally)
14	06537500	1	Nut, Lock Wing .250-20
15	01533400	1	Battery Rod
16	00696900	1	Solenoid
17	07411600	2	Screw, Tap .250-20 x .37
18	05957400	8	Bolt, Hex .31-18 x 1.75 Grade 5
19	06545400	8	Nut, 5/16-18 Flange Nyloc
20	05958000	2	Bolt, Hex .38-16 x 1.25 Grade 5
21	06535900	2	Nut, Hex Jam .375-16
22	06713500	4	Pin, Hair Internal .08 x .18 x 1.18
23	05900027	4	Bolt, Hex 5/16-18 x 5 Grade 2
24	05514800	4	Bushing, Flange .312 x .500 x .344 x .880
25	06441100	4	Washer, Flat Steel .52 x .827 x .062
26	06530400	4	Nut, Spin Lock-Flange .312-18
27	06536100	4	Nut, Jam .312-18
28	00581600	4	Stop Tab
29	03652200	4	Stud, Ball
30	09273400	2	Damper, Control
31	06543100	4	Nut, Locking Top Flange .31-18

STEERING CONTROLS

Model 915085, 087, 089, 091 Serial Numbers 50,000 and Up



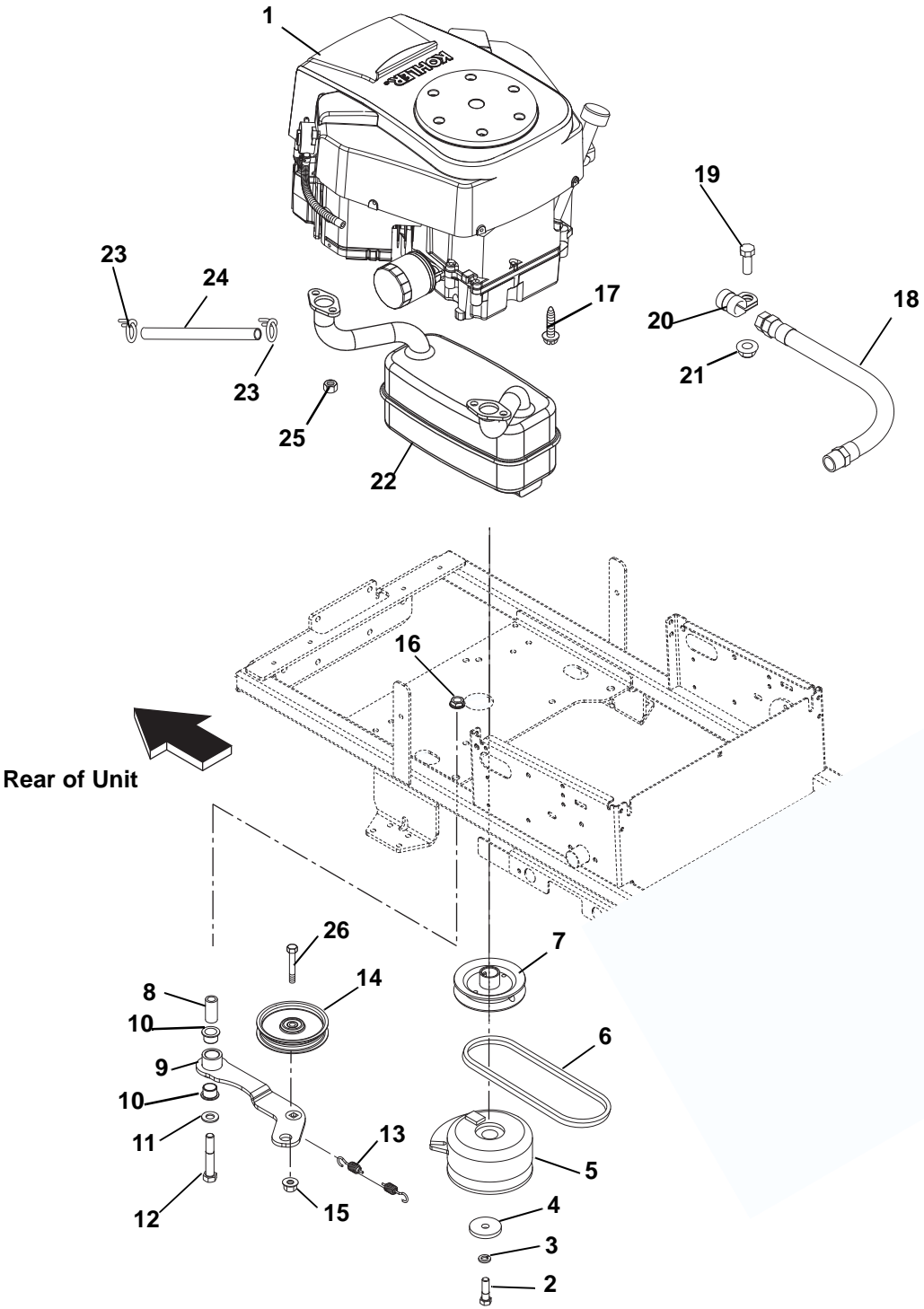
STEERING CONTROLS

Model 915085, 087, 089, 091 Serial Numbers 50,000 and Up

Item	Part No.	Qty.	Description
1	00667051	2	Weldment, Control Link
2	02493000	2	Pivot, Rod
3	00292100	2	Link, Wireform
4	05900013	2	Bolt, .38-16 x 1 Grade 8 EP30
5	06441700	2	Washer, Flat Steel .390 x 1.5 x .125
6	01591100	4	Bushing, 1.00 x .75 x 1.00
7	00477151	2	Weldment, Control Arm
8	00481751	2	Channel, Upper Handlebar
9	07533300	2	Caplug, Handlebar
10	00364900	2	Bushing
11	00372300	2	Eccentric
12	00354951	2	Handlebar
13	01570000	2	Grip, Handlebar
14		1	Battery, Exide Sealed Maintenance Free U1-250 (Purchase replacement locally)
15	06537500	1	Nut, Lock Wing .250-20
16	01533400	1	Battery Rod
17	00696900	1	Solenoid
18	07411600	2	Screw, Tap .250-20 x .37
19	05957400	8	Bolt, Hex .31-18 x 1.75 Grade 5
20	06545400	8	Nut, 5/16-18 Flange Nyloc
21	05958000	2	Bolt, Hex .38-16 x 1.25 Grade 5
22	06535900	2	Nut, Hex Jam .375-16
23	06713500	4	Pin, Hair Internal .08 x .18 x 1.18
24	05900027	4	Bolt, Hex 5/16-18 x 5 Grade 2
25	05514800	4	Bushing, Flange .312 x .500 x .344 x .880
26	06441100	4	Washer, Flat Steel .52 x .827 x .062
27	06530400	4	Nut, Spin Lock-Flange .312-18
28	06536100	4	Nut, Jam .312-18
29	00581600	4	Stop Tab
30	03652200	4	Stud, Ball
31	09273400	2	Damper, Control
32	06543100	4	Nut, Locking Top Flange .31-18
33	06444200	4	Washer, Flat Steel .755 x 1.25 x .125

ENGINE, EXHAUST, BELTS AND IDLERS

Model 915085, 087, 089, 091



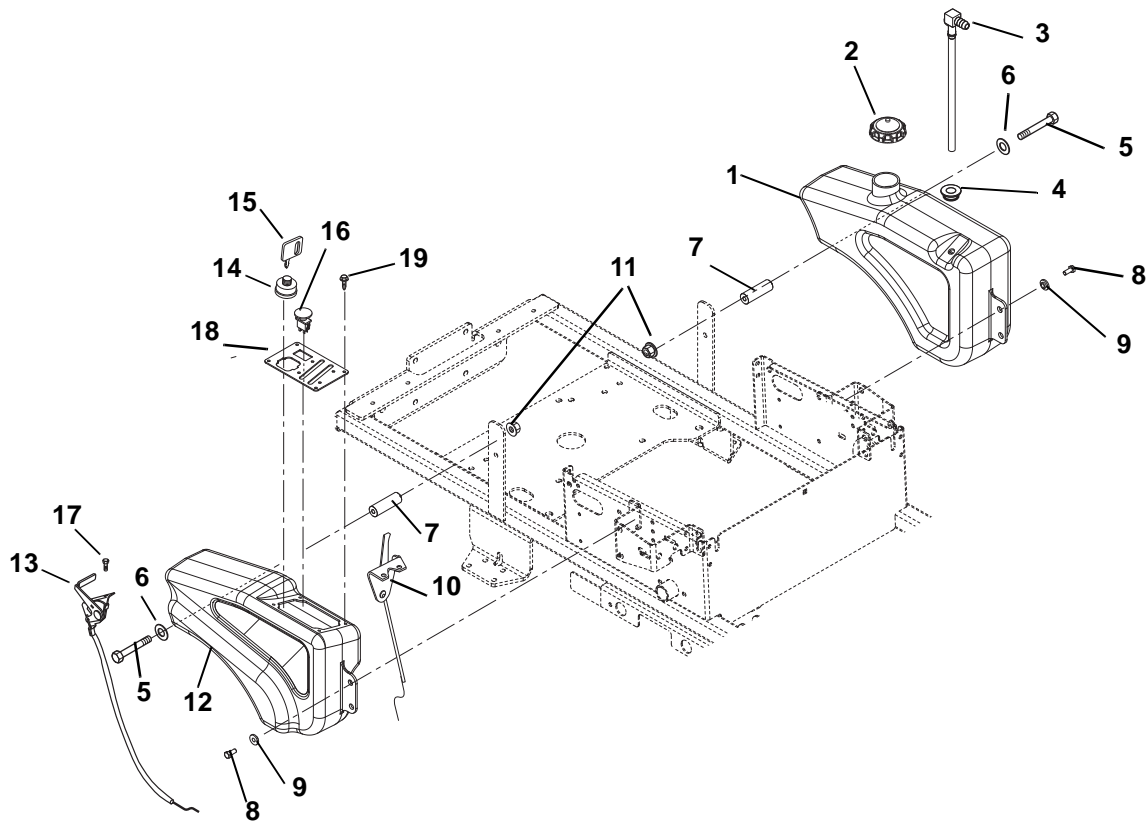
ENGINE, EXHAUST, BELTS AND IDLERS

Model 915085, 087, 089, 091

Item	Part No.	Qty.	Description
1	08200117	1	Engine, 23 hp Kohler (085)
	08200204	1	Engine, 18 HP Kohler Single(087)
	08200136	1	Engine, 16 HP Kohler Single (089)
	08200203	1	Engine, 16 HP Briggs and Stratton Single (091)
2	05900026	1	7/16 - 20 x 3-1/4 HHCS Grade 8
3	06309300	1	Washer, Locking .44 x .109 Regular
4	06443600	1	Washer, Flat Steel .469 x 2.00 x .25
5	00480600	1	Electric Clutch (085)
	00617400	1	Electric Clutch RMS (087, 089, 091)
6	07237900	1	V-Belt, A-RMAX x .50
7	00480700	1	Sheave, Gound Drive
8	05516400	1	Bushing, Sleeve .500 x .750 x .1.560
9	00604000	1	Weldment, Idler
10	05500039	2	Bushing, Flange 0.75 x 0.875 x .625 x 1.125
11	06441900	2	Washer, Flat Steel .531 x 1.06 x .095
12	05960000	1	Bolt, Hex .50-13 x 3.25
13	08336100	1	Spring, Extension
14	07312500	1	Idler, Flanged 4.00
15	06545500	1	Nut, 3/8-16 Flange Nyloc
16	06543600	1	Nut, Locking Top Flange .50-13
17	07414100	4	Screw, Tapping .38-16 x 1.00 Hex Washer Head
18	00588700	1	Hose Assembly, Oil Drive .38 x 11.5 OAL
19	05947000	1	Bolt, Hex .31-18 x .75 Grade 5
20	06900036	1	Clamp, Cushioned Steel .75
21	06545400	1	Nut, .31-18 Nyloc Flange
22	00391700	1	Muffler, Twin Kohler (085)
	00435800	1	Muffler, Weldment (Courage) (086, 087, 089)
23	06939100	2	Clamp, Hose Wire .490/.510 x .092
24	00924300	1	Gas Line, Bulk 16" LG (085)
	00924300	1	Gas Line, Bulk 28" LG (087, 089)
	00924300	1	Gas Line, Bulk 24" LG (091)
25	06500007	4	Nut, Top Lock Flange 8 x 1.25 (085)
	06500007	2	Nut, Top Lock Flange 8 x 1.25 (087, 089)
26	05963300	1	Bolt, Hex .38-16 x 2.00 Grade 5

FUEL TANK

Model 915085, 087



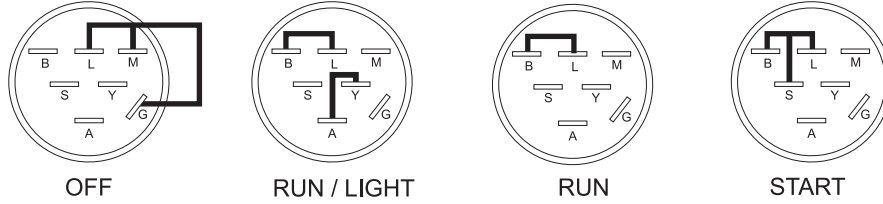
Item	Part No.	Qty.	Description
1	00479500	1	Gas Tank
2	01538400	1	Fuel Cap
3	09112300	1	Fitting, Tank
4	07511400	1	Bushing, Flange .375 x 1.062 x .625
5	05948000	2	Bolt, Hex .31-18 x 3.50 Grade 5
6	06435700	2	Washer, Flat-Steel .38 x .875 x .083
7	00480900	2	Spacer, Tank Mount
8	05947000	4	Bolt, Hex .31-18 x .75 Grade 5
9	01305900	4	Shoulder Spacer
10	00605100	1	Cable, Choke Cable (085)
	00619600	1	Throttle/Choke Cable, 40" (087, 089, 091)
11	06545400	2	Nut, .31-18 Nyloc Flange
12	00479600	1	Fender
13	00605000	1	Cable, Throttle (085)
14	01588300	1	Key Switch
15	02460700	2	Key, w/cap
16	01545600	1	Switch, Clutch
17	07415800	4	Screw, Tapping 10-24 x .50 Hex Washer Head (085)
	07415800	2	Screw, Tapping 10-24 x .50 Hex Washer Head Thread Rolling (087, 089, 091)
18	00479351	1	Control Panel (085)
	00603651	1	Control Panel (087, 089, 091)
19	06830000	4	Rivet, Plastic .195 Diameter

CONTINUITY DIAGRAM

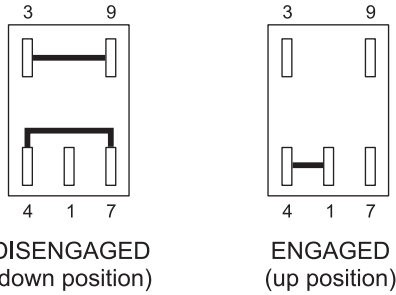
Model 915085, 087, 089, 091

The diagrams below show the various states of connection for electrical components.
The solid lines on switches show continuity.
NOTE: All switches are viewed from the rear.

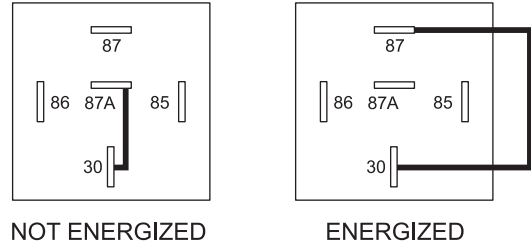
Key Switch (01588300)



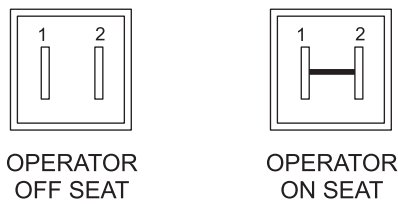
PTO Switch (01545600)



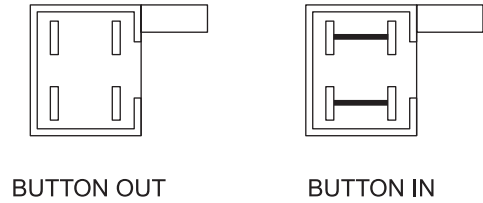
Relay (03042800)



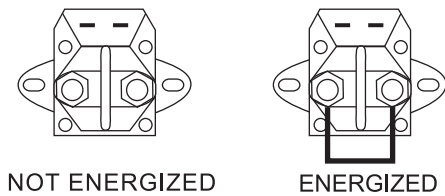
Seat Switch (02754100)



Park Brake Switch (03606600)



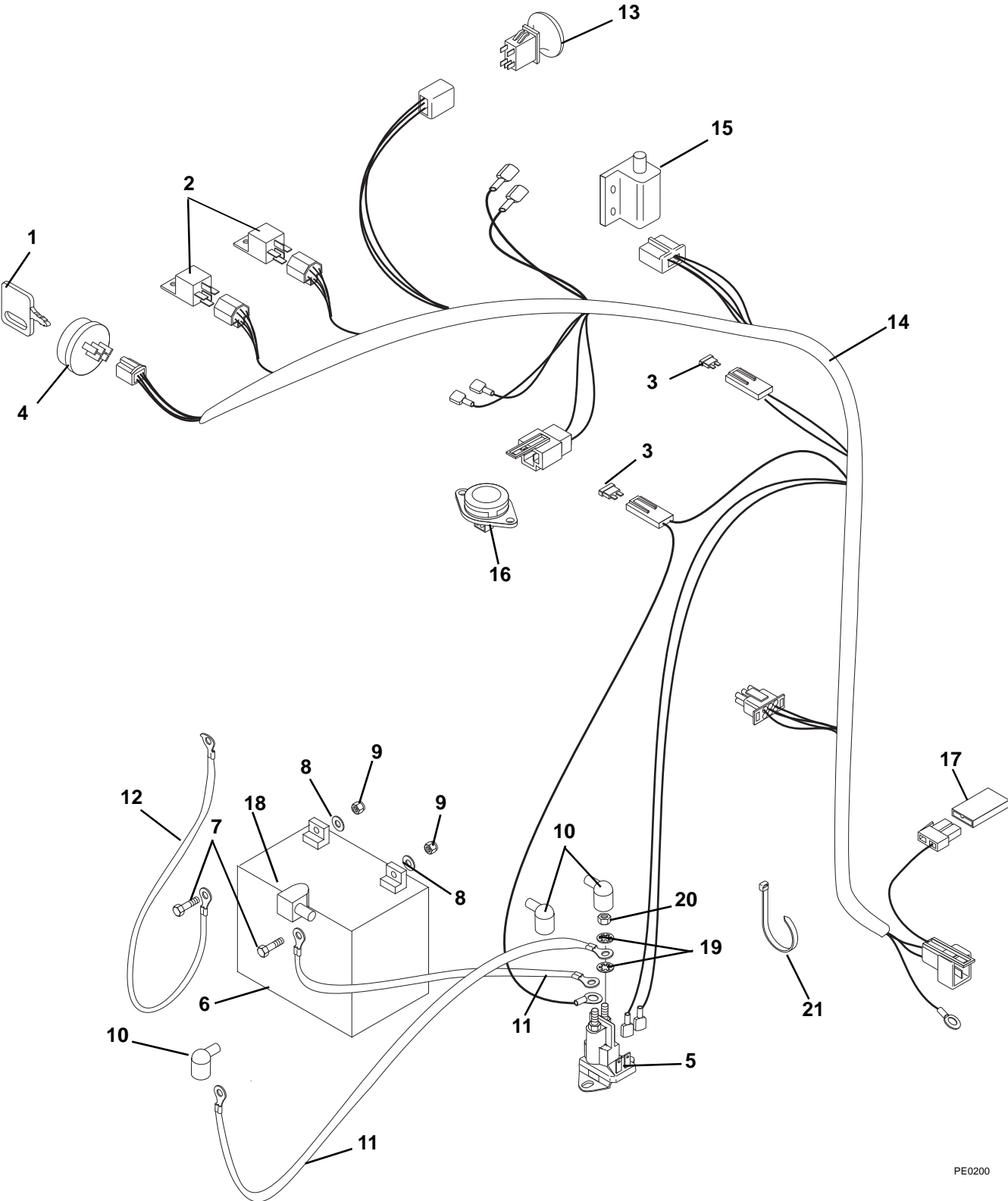
Solenoid (00696900)



PE0771

ELECTRICAL SYSTEM

Model 915085, 087, 089, 091



PE0200

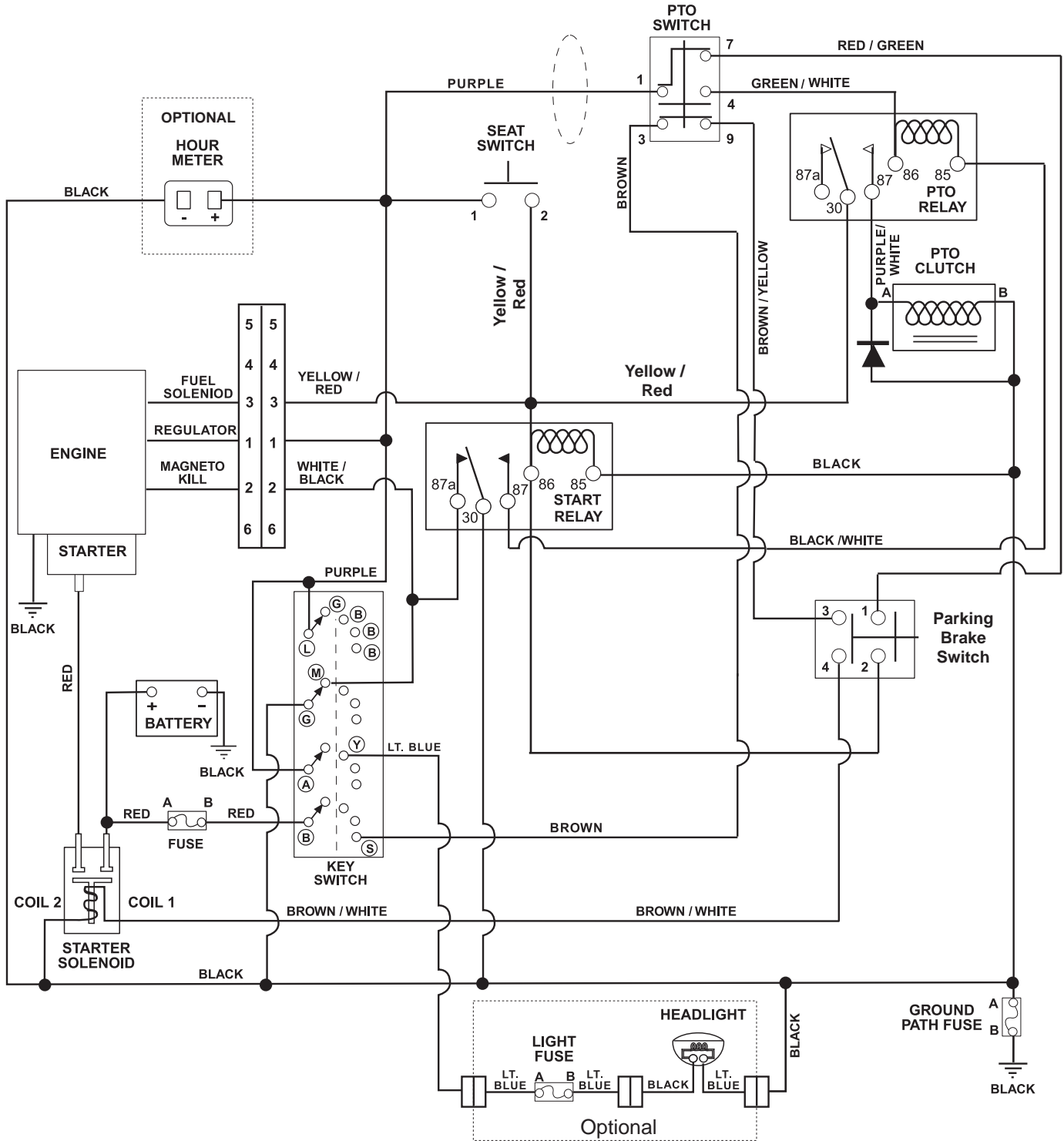
ELECTRICAL SYSTEM

Model 915085, 087, 089, 091

Item	Part No.	Qty.	Description
1	02460700	2	Key with Cap
2	03042800	2	Relay
3	09351100	2	Fuse, 30 AMP
4	01588300	1	Key Switch
5	00696900	1	Solenoid
6		1	Battery, Exide Sealed Maintenance Free U1-250 (Purchase replacement locally)
7	05946800	2	Bolt, Hex .25-20 x .75 Grade 5
8	06437300	2	Washer, Flat Steel .281 x .62 x .065
9	06509200	2	Nut, KEPS .250-20
10	07533200	3	Boot, Eyelet Terminal
11	02727200	2	Starter Cable 13"
12	03111100	1	Ground Cable
13	01545600	1	Switch, Clutch With Retainer
14	00347900	1	Harness, Mini-Zoom/Zoom
15	03606600	1	Switch, Double Pole N.O. / N.O.
16	02754100	1	Switch, Snap Mounting (N.O.)
17	09293500	1	Diode, Connector Shell
18	07505700	1	Insulator
19	06310500	4	Washer, Locking .31
20	06536700	2	Nut, Jam .31-24
21	07517300	1	Cable Tie

WIRING DIAGRAM

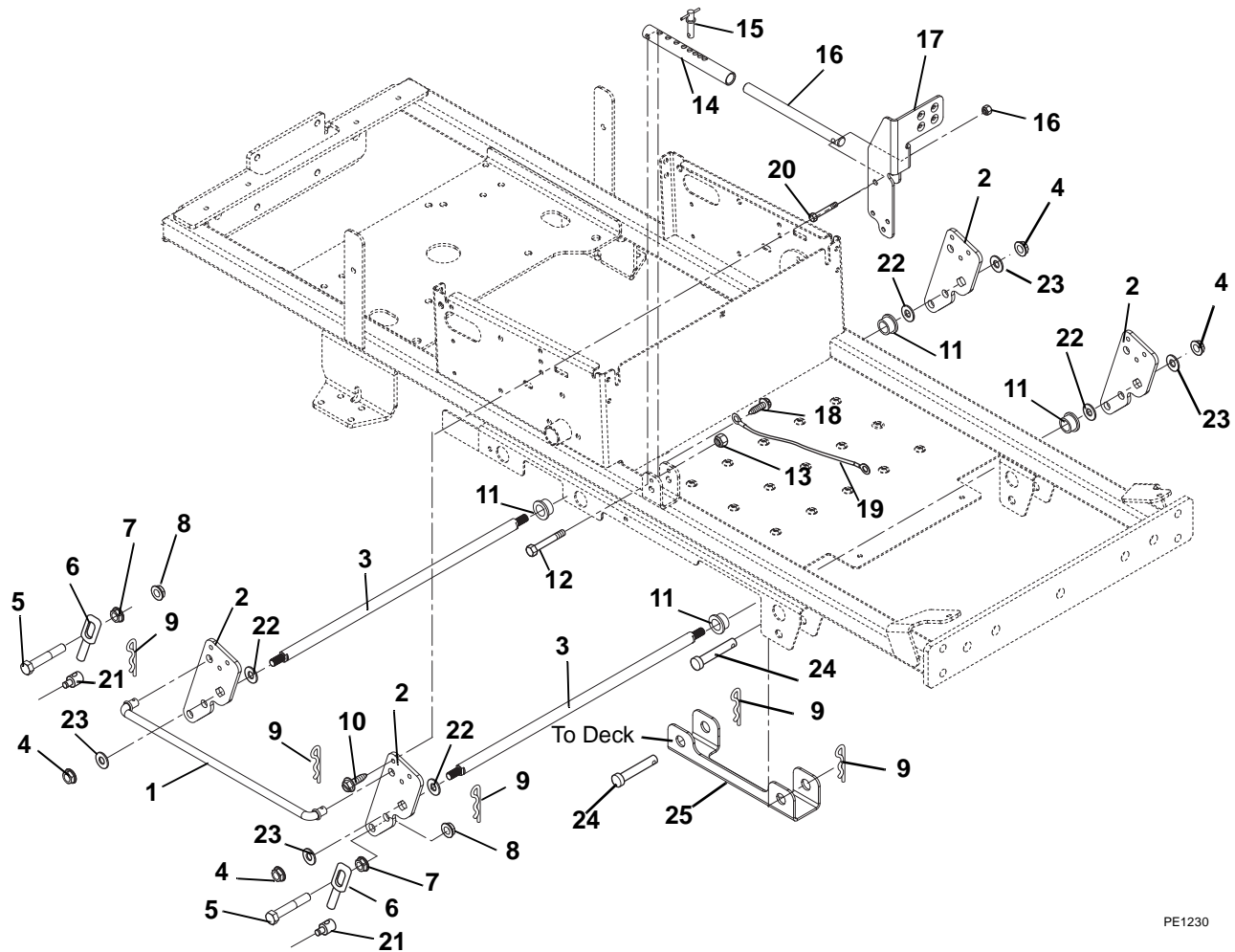
Model 915085, 087, 089, 091



PE1290

MOWER DECK LIFT

Model 915085, 087, 089, 091

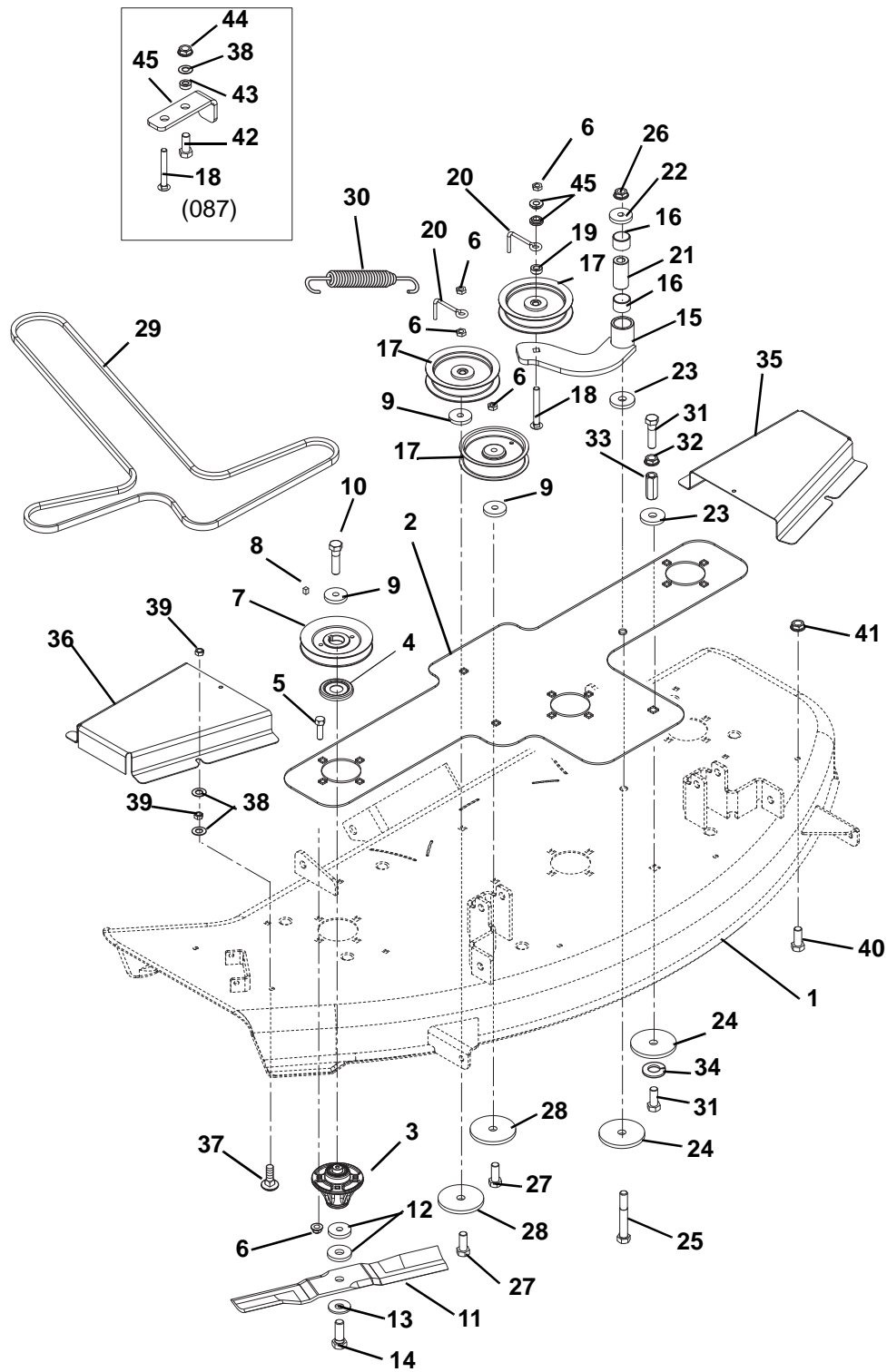


PE1230

Item	Part No.	Qty.	Description
1	00279900	1	Rod, Lift
2	00279800	4	Lift Arm
3	00502600	2	Shaft, Lift
4	06500400	4	Nut, Hex .250-28
5	05953500	4	Bolt, Hex .50-13 x 2.75 Grade 8
6	00160000	4	Deck Link
7	06543300	4	Nut, Spin Lock Flange .50-13
8	06500010	8	Nut .50-13 Nyloc Flange
9	06714900	10	Pin, Hair #16
10	07411500	3	Screw, Tap .31-18 x .50
11	05503900	4	Bushing, Flange .750 x 1.000 x .625 x 1.250
12	05963300	1	Bolt, Hex .38-16 x 2.00 Grade 5
13	06545500	2	Nut, Flange Nyloc 3/8-16
14	00347800	1	Tube, Lift Stop
15	01593500	1	Pin, Spring Ball .375OD x 1.50
16	00347700	1	Rod, Lift
17	00279551	1	Pedal, Foot Lift
18	07412000	1	Screw, Tap .25-20 x .50
19	06927100	1	Cable, Hood
20	05958400	1	Bolt, Hex .38-16 x 2.50 Grade 5
21	01590400	4	Trunnion
22	06441500	4	Washer, Flat Steel .755 x 1.375 x .062
23	06445000	4	Washer, Flat-Steel .515 x 1.625 x .250
24	06810700	4	Pin-Clevis .494 x 2.50
25	00484700	2	Channel, Deck Lift

MOWER DECK, BELT, IDLERS AND BLADES

Model 915085, 087



PE0870

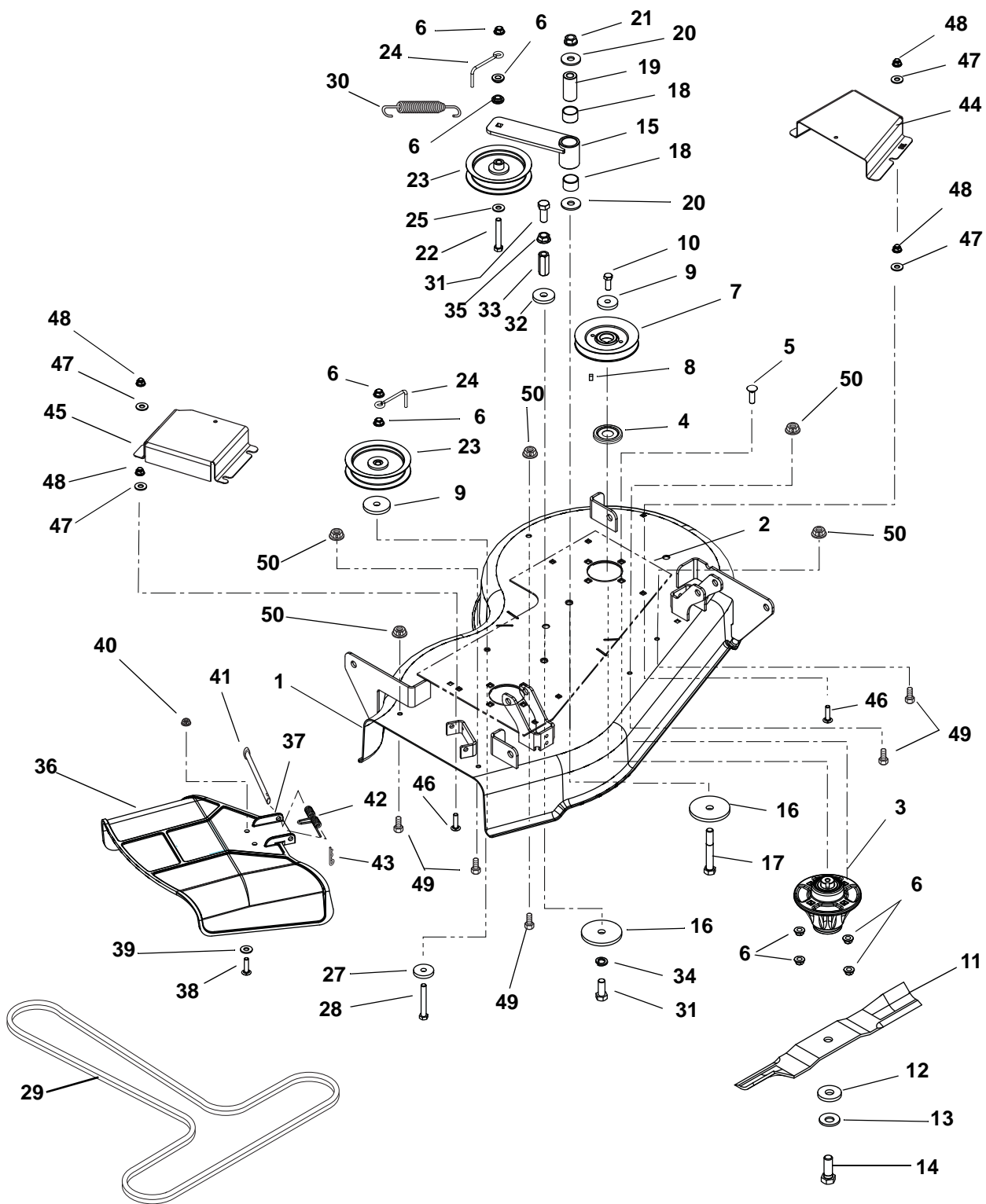
MOWER DECK, BELT, IDLERS AND BLADES

Model 915085, 087

Item	Part No.	Qty.	Description
1	00585351	1	Weldment, 40" Stamped Deck (087)
	00476851	1	Weldment 50" Deck (085)(084)
2	00616551	1	Doubler Plate, 40-Inch Deck (087)
	00616051	1	Deck Doubler, (085)
3	61543800	3	Spindle Assembly
4	00587400	3	Dust Cap
5	06224100	12	Bolt, Round Head Square Neck .38-16 x 1.25
6	06545500	15	Nut .38-16 Flange Nyloc (085)
	06545500	16	Nut .38-16 Flange Nyloc (087)
7	01610400	3	Sheave, 4.25 Diameter A-Section (087)
	01610300	3	Sheave, Spindle 4.75 Dia. (085)
8	06611100	3	Key, Square .25 x .38 x .25
9	06400006	5	Washer, Flat Steel .406 x 1.50 x .245
10	05900013	3	Bolt, Hex .38-16 x 1.00 EP30 Grade 8
11	08861600	3	Blade, Mower (085)
	03498400	3	Blade, Mower (087)
12	06435200	6	Washer, Flat .640 x 1.81 x .250
13	06445700	3	Washer, Beveled .63 x 1.625 x .140
14	05978900	3	Bolt, Hex .62-18 x 1.75 Grade 8
15	00429900	1	Weldment, Idler Arm
16	05435800	2	Bearing, 1.00 x 1.12 x .75
17	07300006	3	Idler, Flat .38 x 4.00 x 1.06
18	06224400	1	Bolt, Round Head Square Neck .38-16 x 2.50 Grade 5 (087)
	06222400	1	Bolt, Round Head Square Neck .38-16 x 3.50 Grade 5 (085)
19	08553700	1	Bushing
20	00391900	2	Finger, Belt (085)
	00391900	1	Finger, Belt (087)
21	01581700	1	Spacer, Powdered Metal
22	06436400	1	Washer, Flat Steel .511 x 1.44 x 125
23	06445000	2	Washer, Flat Steel .515 x 1.625 x .25
24	06400011	2	Washer, Flat Steel .531 x 3.00 x .25
25	05965800	1	Bolt, Hex .50-13 x 3.50 Grade 5
26	06543600	1	Nut, Locking-Top-Flange .50 - 13
27	05961400	2	Bolt, Hex .38-16 x 2.75 Grade 5
28	06443600	2	Washer, Flat Steel .469 x 2.00 x .25
29	07241800	1	V-Belt, 40" Zoom (087)
	07200107	1	V-Belt, HA x 140.2 EFF. (085)
30	08300020	1	Spring
31	05958900	2	Bolt, Hex .50-13 x 1.25 Grade 5
32	06543300	1	Nut, Spin Lock Flange .50-13
33	06500013	1	Nut, Coupling .50-13 x 1.75
34	06307300	1	Washer, Lock 1/2
35	00607551	1	Belt Cover, Left 40 (087)
	00486851	1	Belt Cover, Left (085)
36	00607651	1	Belt Cover, Right 40 (087)
	00486951	1	Belt Cover, Right (085)
37	06200008	6	Bolt, Round Head Square Neck .31-18 x 1.25 Grade 5
38	06435700	13	Washer, Flat Steel .38 x .875 x .083 (087)
	06435700	12	Washer-Flat-Steel .38 x .875 x .083 (085)
39	06545400	12	Nut, .31-18 Nyloc Flange
40	05947000	7	Bolt, Hex .31-18 x .75 Grade 5 (087)
	05947000	6	Bolt, Hex .31-18 x .75 Grade 5 (085)
41	06530400	6	Nut, Spin Lock-Flange .312-18
42	05948700	1	Bolt, Hex .38-16 x 1.00 Grade 5 (087)
43	05508900	1	Bushing-Sleeve .377 x .624 x .235 (087)
44	06542000	1	Nut, Locking-Top-Flange .38-16 (087)
45	00617851	1	Belt Finger (087)
	05515800	2	Bushing, Flange .406 x .88 x .270 x .140 (085)

34" MOWER DECK, BELT, IDLERS AND BLADES

Model 915089, 091



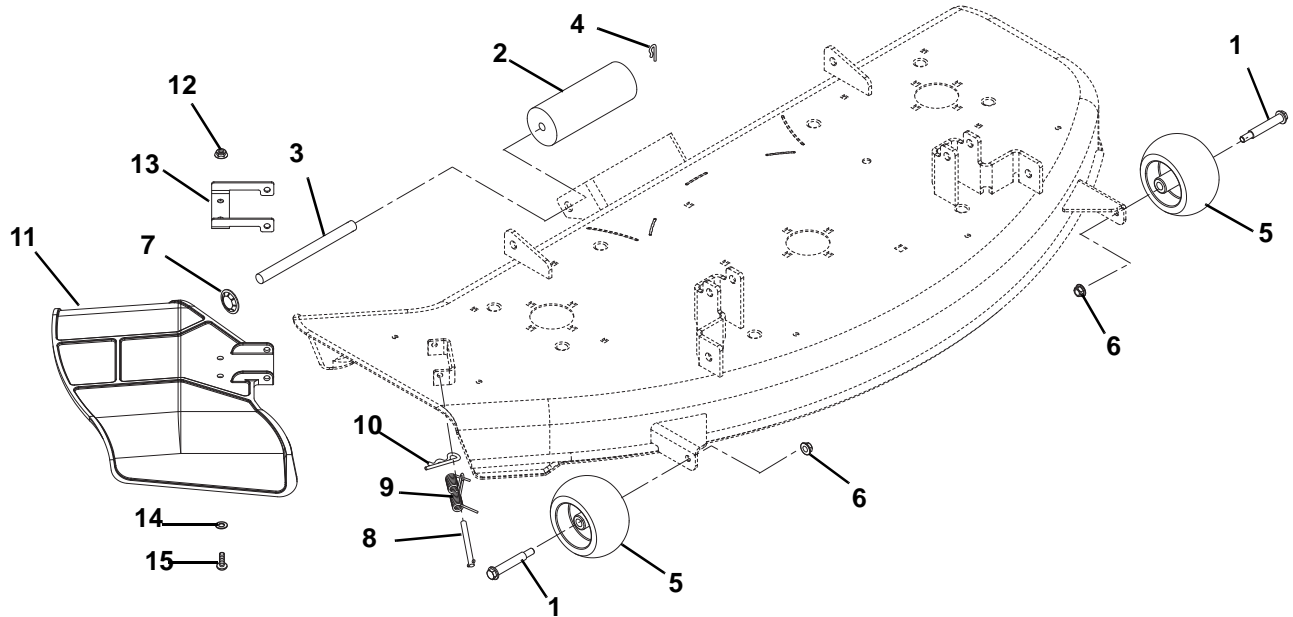
34" MOWER DECK, BELT, IDLERS AND BLADES

Model 915089, 091

Item	Part No.	Qty.	Description
1	00609851	1	34" Deck, Stamped
2	00619851	1	Doubler Plate, 34" Deck
3	61543800	2	Spindle Assembly
4	00587400	2	Dust Cap
5	06224100	8	Bolt, Round Head Square Neck .38-16 x 1.25 Grade 5
6	06545500	14	Nut, .38-16 Nyloc Flange
7	01610300	2	Sheave, 4.75 Diameter A-Section
8	06611100	2	Key, Square .25 x .38 x
9	06400006	3	Washer, Flat Steel .406 x 1.50 x .245
10	05900013	2	Bolt, Hex .38-16 x 1.00 EP30
11	00651800	2	Blade, 17.5 x 2.25 x .197
12	06435200	4	Washer, Flat .640 x 1.81 x .250
13	06445700	2	Washer, Bellville .63 x 1.625 x .14
14	05978900	2	Bolt, Hex .62-18 x 1.75 Grade 8
15	00652600	1	Idler Arm
16	06445000	3	Washer, Flat-Steel .515 x 1.625 x .250 YZ
17	05965800	1	Bolt-Hex .50-13 x 3.50 Grade 5
18	05435800	2	Bearing, 1.00 x 1.12 x .75
19	01581700	1	Bushing, Spacer .505/.500 x .999/.996 x 2.05/2.03 Promaster
20	06436400	1	Washer, Flat-Steel .511 x 1.441 x .125
21	06543600	1	Nut, Locking-Top-Flange .50-13
22	05958400	1	Bolt, Hex .38-16 x 2.50 Grade 5
23	07300006	2	Idler, Flat .38 x 4.00 x 1.06
24	00391900	2	Belt Finger
25	05515800	2	Bushing, Flange .406 x .88 x .270 x .140
26	06400006	1	Washer, Flat Steel .406 x 1.50 x .245
27	06443600	1	Washer, Flat-Steel .469 x 2.00 x .25
28	05961400	1	Bolt, Hex .38-16 x 2.75 Grade 5
29	07200116	1	Belt, HA 98.75 Wrapped
30	08300020	1	Extension Spring
31	05958900	2	Bolt, Hex .50-13 x 1.25 Grade 5
32	06445000	1	Washer, Flat-Steel .515 x 1.625 x .250 YZ
33	06500013	1	Nut, Coupling .50-13 x 1.75
34	06307300	1	Washer-Locking .50 x .125 Regular
35	06543300	1	Nut, Spin Lock-Flange .50-13
36	00499900	1	Molded Chute, Zoom
37	00662651	1	Chute Reinforcement
38	05920900	2	Screw, Socket Head .31-18 x .75 Button Head
39	06435700	2	Washer, Flat-Steel .38 x .875 x .083
40	06543100	2	Nut, Locking-Top-Flange .31-18
41	06800002	1	Clevis Pin, 5/16 x 4.0
42	01258100	1	Spring, Torsion
43	06713500	1	Pin, Hair Internal .08 x .18 x 1.18
44	00655851	1	Belt Cover, 34" Left
45	00655951	1	Belt Cover, Right 34"
46	06200008	6	Bolt, Round Head Square Neck .31-18 x 1.25 Grade 5
47	06435700	12	Washer, Flat-Steel .38 x .875 x .083
48	06545400	12	Nut, .31-18 Nyloc Flange
49	05947000	5	Bolt, Hex .31-18 x .75 Grade 5
50	06530400	5	Nut, Spin Lock Flange .312-18

ANTI-SCALP WHEELS

Model 915085, 087



Item	Part No.	Qty.	Description
1	07056800	2	Bolt, Shoulder .38-16 x 2.50 Hex Washer Head Grade 5
2	03114100	1	Roller (085)
3	00356500	1	Pin, Roller (085)
4	06714500	1	Pin, Spring Clip (085)
5	03471700	2	Wheel 5 x 3
6	06542000	2	Nut, Locking-Top-Flange .38-16
7	07000035	1	Push Nut, .625 Shaft (085)
8	06800002	1	Clevis Pin
9	01259100	1	Spring, Torsion
10	06713500	1	Pin, Hair .08 x .18 x 1.18
11	00499900	1	Plastic Chute
12	06543100	2	Nut, Locking, Top Flange .31-18
13	00662651	1	Chute Reinforcement
14	06435700	2	Washer, Flat Steel .38 x .875 x .083
15	05920900	2	Screw, Socket Head, Button Head .31-18 x .75



Ariens Company
655 West Ryan Street
P.O. Box 157
Brillion, WI 54110-0157
920-756-2141
Fax 920-756-2407
www.ariens.com