

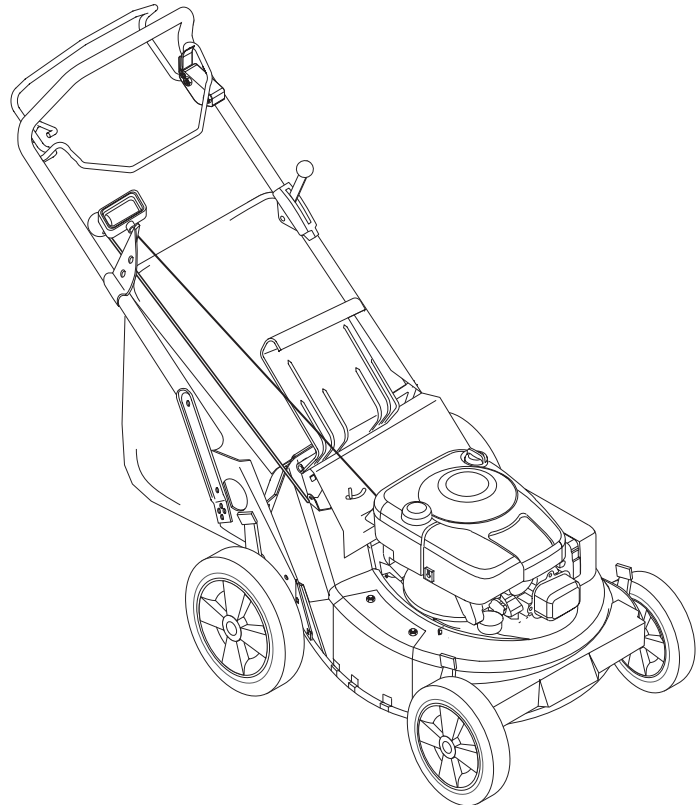


Walk-Behind Lawn Mowers®

Parts Manual

Models

- 911511 - LM21SC
- 911513 - LM21
- 911514 - LM21S
- 911515 - LM21SE
- 911516 - LM21SW
- 911522 - LM21SB



THE MANUAL

Before you operate your unit, carefully and completely read manuals supplied with the unit. The contents will provide you with an understanding of safety instructions and controls during normal operation and maintenance.

For your safety and the safety of others always read, understand, and follow all DANGER, WARNING, and CAUTION messages found in manuals and on safety decals.

Hardware descriptions are given in decimals.

Decimals to Fractions			
.063	1/16	.563	9/16
.125	1/8	.625	5/8
.188	3/16	.688	11/16
.250	1/4	.750	3/4
.313	5/16	.813	13/16
.375	3/8	.875	7/8
.438	7/16	.938	15/16
.500	1/2	1.00	1

SERVICE AND REPLACEMENT PARTS

When ordering replacement parts or making service inquiries, know the Model and Serial numbers of your unit and engine.

Numbers are located on the product registration card in the unit literature package. They are printed on a serial number label, located on the frame of your unit.

- Record Unit Model and Serial numbers here:

- Record Engine Model and Serial numbers here:

UNAUTHORIZED REPLACEMENT PARTS

Use only Ariens replacement parts. The replacement of any part on this vehicle with anything other than an Ariens authorized replacement part may adversely affect the performance, durability, or safety of this unit and may void the warranty. Ariens disclaims liability for any claims or damages, whether warranty, property damage, personal injury or death arising out of the use of unauthorized replacement parts.

PRODUCT REGISTRATION

A warranty registration card must be filled out, signed, and returned at time of purchase. This card activates the warranty. Claims meeting requirements during limited warranty period will be honored.

YOUR SATISFACTION IS IMPORTANT

Questions? Please follow these helpful steps:

1. Refer to the manuals supplied with your unit.
They will guide you through safe and proper operation and maintenance.
They contain specifications on your unit.
If your questions are not answered in these manuals, go to step number two.
2. Contact Your Dealer.
Our dealers will be happy to supply any service or advice required to keep your unit operating at peak efficiency.
A factory trained staff is available to support your equipment needs. They stock genuine Ariens parts and lubricants manufactured with the same precision and skill as the original.
If your questions are not resolved by the support staff, ask for the manager or owner.
When contacting your Dealer supply your model and serial numbers.

TO SPEED PARTS ORDERING:

1. Know the model and serial numbers of your unit.
2. Know the part number required.
3. Know the quantity required.
4. Know the part description.

MODELS

Model 911511 (LM21SC)

4 Cycle-Robin 6 HP
Recoil, Self-Propelled, Commercial
Serial No. 001472 and up

Model 911513 (LM21)

4 Cycle-Briggs & Stratton Intek OHV 6.5 HP
Recoil, Push
Serial No. 001524 and up

Model 911514 (LM21S)

4 Cycle-Briggs & Stratton Intek OHV 6.5 HP
Recoil, Self-Propelled
Serial No. 006618 and up

Model 911515 (LM21SE)

4 Cycle-Briggs & Stratton Intek OHV 6.5 HP
Electric, Self-Propelled
Serial No. 001696 and up

Model 911516 (LM21SW)

4 Cycle-Briggs & Stratton Intek OHV 6.5 HP
Recoil, Self-Propelled, Swivel
Serial No. 005106 and up

Model 911522 (LM21SB)

4 Cycle-Briggs & Stratton Intek OHV 6.5 HP
Recoil, Self-Propelled
Serial No. 000101 and up

TABLE OF CONTENTS

DECALS

Decals 4

MAIN FRAME & ENGINE

Handlebar and Controls 6
Mower Pan and Bag 8
Blade and Belt 10
Engine and Electrical 11

WHEELS

Swivel Wheels and Brackets 13
Wheels and Adjusters 14
Friction Wheel and Adjusters 16

ELECTRICAL

Electrical and Continuity Diagram 18

DECALS

Model 911511, 513, 514, 515, 516, 522



9

⚠ DANGER / PELIGRO

TO AVOID SERIOUS INJURY OR DEATH

- Read the operator's manual.
- Keep children and others away from unit while operating.
- Never direct discharge toward other people. Thrown objects can cause injury.
- Do not operate mower unless guards are in operating position or entire bagger is attached.
- Keep safety devices (guards, shields, switches, etc.) in place and working.
- On across slopes, not up and down.
- Lock down and behind before and while moving backward.

POUR EVITER LES BLESSURES GRAVES OU LA MORT

- Lire le manuel de l'utilisateur.
- Éloigner les enfants et toute autre personne pendant le fonctionnement de la machine.
- Ne jamais décharger directement en direction de quelqu'un. Des particules projetées peuvent provoquer des blessures.
- Ne pas utiliser la tondeuse sans garantir et sans sac totalement attaché.
- Maintenez toujours en place tous les éléments de sécurité (protecteurs, interrupteurs, etc.).
- Tondez le long des pentes, jamais de haut en bas ou inversement.
- Regardez derrière et sur les cotés lorsque vous reculez.

PARA EVITAR DAÑOS SERIOS O LA MUERTE

- Leer el manual del operador.
- Mantenga la unidad alejada de los niños u otras personas cuando esté en funcionamiento.
- Nunca dirija la descarga hacia otras personas, a que los objetos lanzados puedan provocar lesiones.
- No poner en funcionamiento la máquina a menos que las guardas estén en posición de funcionamiento o la embolsadora entera esté conectada.
- Mantenga dispositivos de seguridad (defensas, protectores, interruptores, etc.) en su lugar y trabajando.
- Trabaje pendiente, no subir ni bajar.
- Mire hacia abajo y detrás antes y durante retroceso.

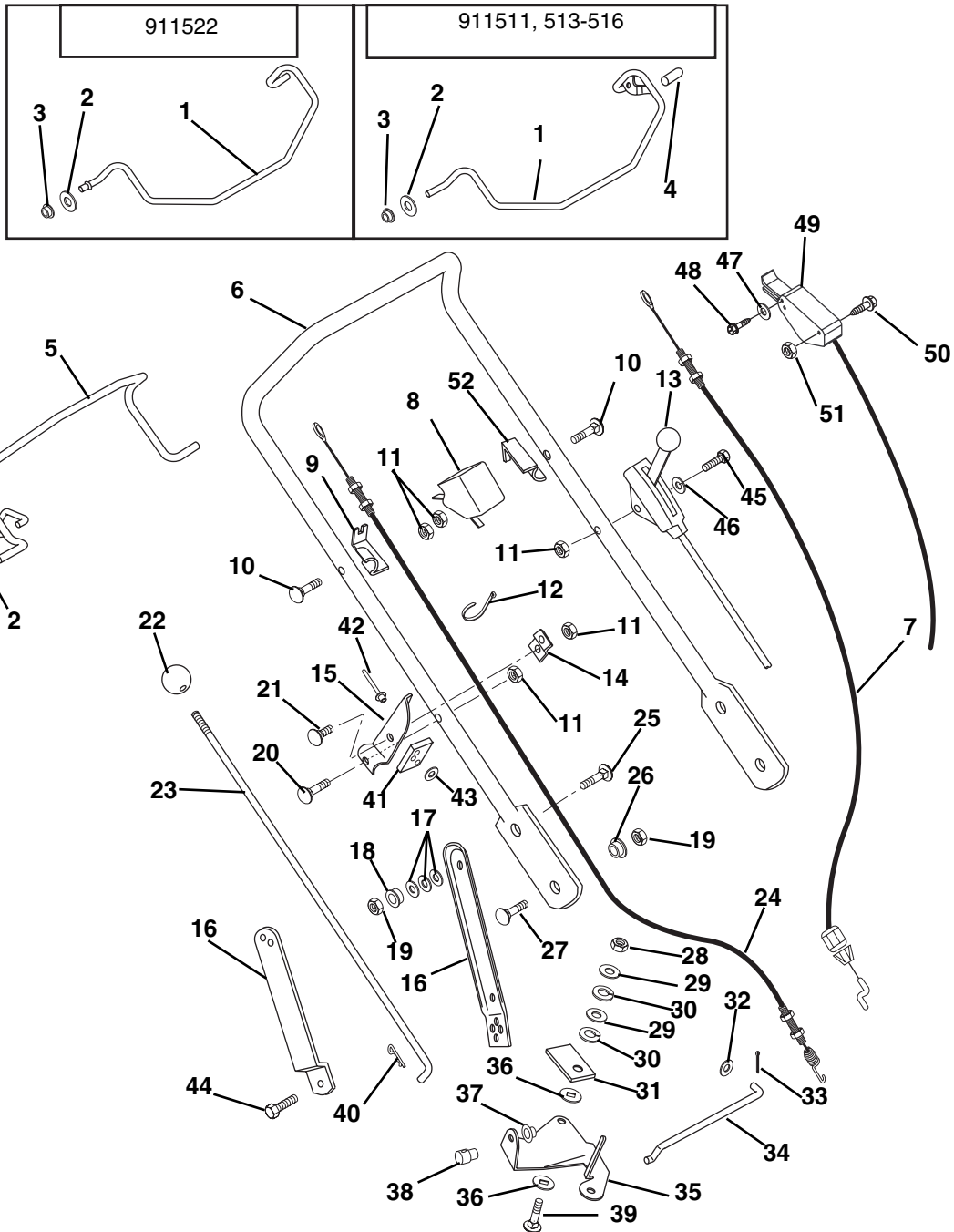
DECALS

Model 911511, 513, 514, 515, 516, 522

Item	Part No.	Qty.	Description
1	07760700	1	Decal, Speed Control (511, 514-516, 522)
2	05227000	1	Decal, Turtle & Rabbit (511, 514-516, 522)
3	07739400	1	Label, Bagger 21"
4	08088300	1	Decal, CPSC Danger
5	08087900	1	Decal, Ariens Deck (511, 513-516)
	05230600	1	Decal, Ariens Blade Brake/Clutch (522)
6	05226800	1	Decal, Round Ariens Recoil, Robin (511)
	05225800	1	Decal, Ariens Recoil, Briggs & Stratton (513-522)
7	05226400	1	Decal, 6.0 H.P. OHV Robin (511)
	07756900	1	Decal, Ariens, Briggs & Stratton (513-516, 522)
8	08088000	1	Decal, Drive Cover Self Propelled (514-516, 522)
	08088100	1	Decal, Drive Cover Self Propelled Professional (511)
	05230700	1	Decal, Blade Brake/Clutch Drive Cover (522)
9	07742400	1	Decal, Bilingual Danger
10	08086900	1	Decal, Key Switch (515)
11	07761700	1	Decal, Engine Control

HANDLEBAR AND CONTROLS

Model 911511, 513, 514, 515, 516, 522



PM0026

Item	Part No.	Qty.	Description
1	01177251	1	Engine Bail Weldment (511, 513-516)
	01191551	1	Bail- Blade Brake/Clutch (522)
2	06437200	4	Washer-Flat-Steel .32 x .44 x .44 x .56 (511, 513-516)
	06437200	3	Washer-Flat-Steel .32 x .44 x .44 x .56 (522)
3	05514500	4	Bushing-Flange .325 x .688 x .560 (511, 513-516)
	05514500	3	Bushing-Flange .325 x .688 x .560 (522)
4	07517000	2	Cap, Vinyl .25 I.D. (511, 513-516)
	07517000	1	Cap, Vinyl .25 I.D. (522)
5	01177051	1	Traction Bail (511, 514-516, 522)
6	01184851	1	Handlebar

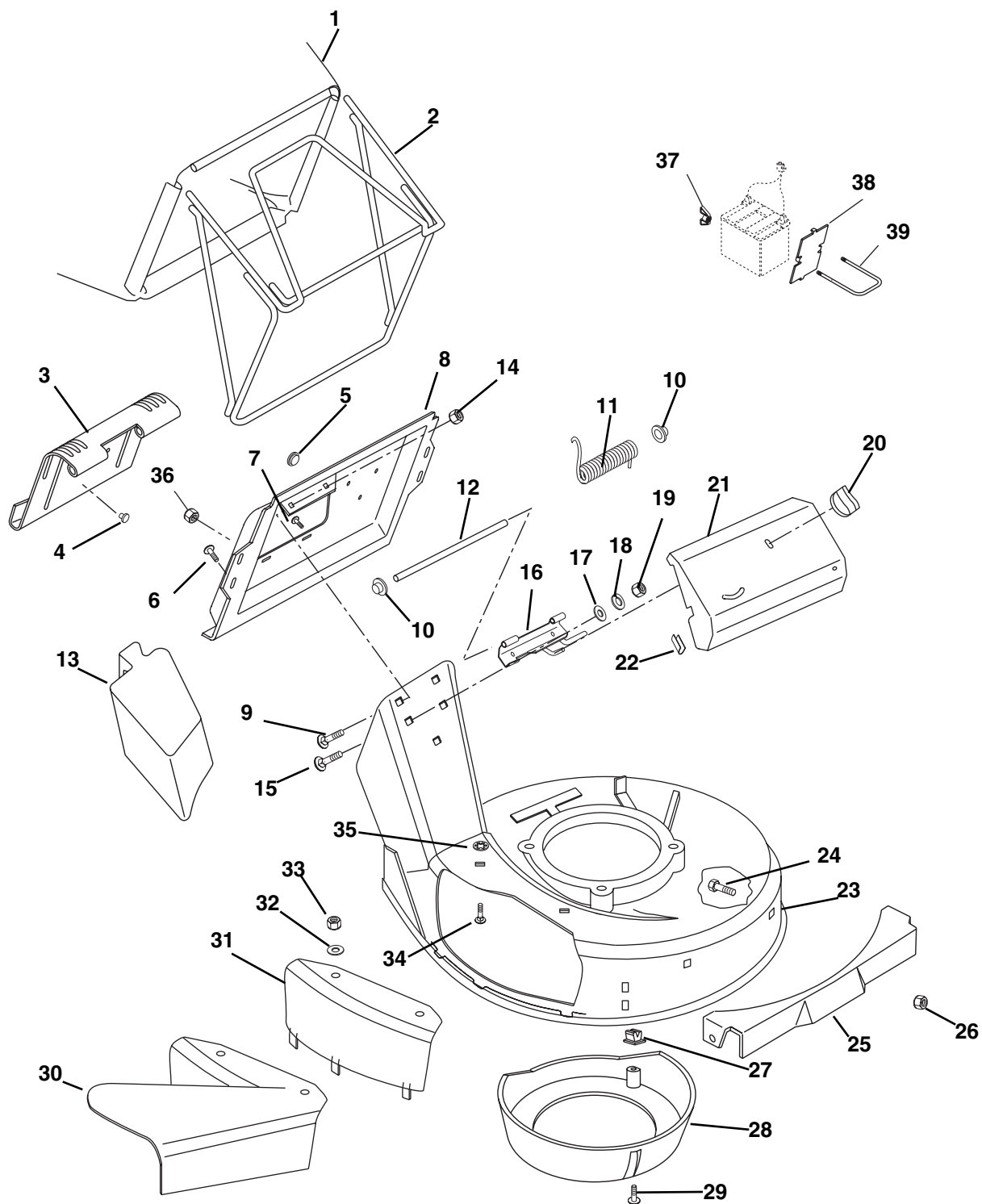
HANDLEBAR AND CONTROLS

Model 911511, 513, 514, 515, 516, 522

Item	Part No.	Qty.	Description
7	06922000	1	Engine Control Cable (513-516, 522)
	06937900	1	Engine Control Cable (511)
8	01156400	1	Switch-Cable Anchor (515)
9	01137551	1	Cable Anchor-Right Hand (511, 514-516, 522)
10	06220100	2	Bolt-Round Head Square Neck .25-20 x 1.25 (511, 513-516)
	06220100	1	Bolt-Round Head Square Neck .25-20 x 1.25 (522)
11	06529700	5	Nut-Locking-Center .25-20 (511, 513-516)
	06529700	4	Nut-Locking-Center .25-20 (522)
12	07517300	3	Cable Tie
13	06940100	1	Throttle Cable (511)
	06946400	1	Throttle Cable (522)
14	01141851	1	Brace-Speed Control
15	01137451	1	Bracket-Speed Control
16	01150051	1	Link-Handlebar Adjuster Left Hand (513-516, 522)
	01150151	1	Link-Handlebar Adjuster Right Hand (513-516, 522)
	01158651	2	Handlebar Bracket (511)
17	01178700	6	Washer-Bellville Spring (513-516, 522)
18	05514900	2	Bushing-Flange .325 x .50 x .513 x .875 (513-516, 522)
19	06529800	4	Nut-Locking-Center .31-18
20	06222300	1	Bolt-Round Head Square Neck .25-20 x 1.38
21	06220600	1	Bolt-Round Head Square Neck .25-20 x .50 Grade 5
22	07515900	1	Knob (511, 514-516, 522)
23	01140800	1	Rod-Speed Control (511, 514-516, 522)
24	06921200	1	Traction Cable (511, 514-516, 522)
25	06216100	2	Bolt-Round Head Square Neck .31-18 x 1.00 Grade 5 (513-516, 522)
26	01305900	2	Shoulder Spacer
27	06215700	2	Bolt-Round Head Square Neck .31-18 x .75 Grade 5 (513-516, 522)
	06216100	2	Bolt-Round Head Square Neck .31-18 x 1.00 Grade 5 (511)
28	06529600	1	Nut-Locking-Center .38-16 (511, 514-516, 522)
29	06436200	2	Washer-Flat-Steel .406 x .812 x .065 (511, 514-516, 522)
30	06306500	2	Washer-Lock .375 x .115 Heavy (511, 514-516, 522)
31	01154800	1	Pressure Flange (511, 514-516, 522)
32	06437300	1	Washer-Flat-Steel .281 x .620 x .065 (511, 514-516, 522)
33	06712400	1	Pin-Cotter .06 x .50 (511, 514-516, 522)
34	01126100	1	Shift Link (511, 514-516, 522)
35	01123900	1	Bell Crank-Speed Control (511, 514-516, 522)
36	01123800	2	Friction Washer (511, 514-516, 522)
37	01019800	1	Cap, Rod .375 (511, 514-516, 522)
38	01139800	1	Swivel (511, 514-516, 522)
39	06222200	1	Bolt-Round Head Square Neck .38-16 x 1.25 (511, 514-516, 522)
40	06713500	1	Pin-Hair-Internal .08 x .18 x 1.18 (511, 514-516, 522)
41	01173800	1	Support Pad (511, 514-516, 522)
42	06815700	2	Rivet .187 x .575 (511, 514-516, 522)
43	06442700	2	Washer-Flat Steel .219 x .50 x .049 (511, 514-516, 522)
44	05947000	2	Bolt-Hex .31-18 x .75 Grade 5 (511)
45	06220000	1	Bolt-Round Head Square Neck .25-20 x 1.75 Grade 5 (511)
	06209300	1	Bolt-Round Head Square Neck .25-20 x 1.75 XL (522)
46	06442300	1	Washer-Flat-Steel .250 x .562 x .049 (511)
	06437300	1	Washer-Flat-Steel .281 x .62 x .065 (522)
47	06442700	1	Washer-Flat-Steel .219 x .50 x .049 (522)
48	07415800	1	Screw-Tapping 10-24 x .50 Hex Washer Head (522)
49	06946500	1	Control- Blade Brake/Clutch (522)
50	06116800	2	Screw-Machine 10-24X2.00 Hex Washer Head (522)
51	06536600	2	Nut-Hex 10-24 (522)
52	01155751	1	Cable Anchor-Left Hand (511, 513-516, 522)

MOWER PAN AND BAG

Model 911511, 513, 514, 515, 516, 517



PM0033

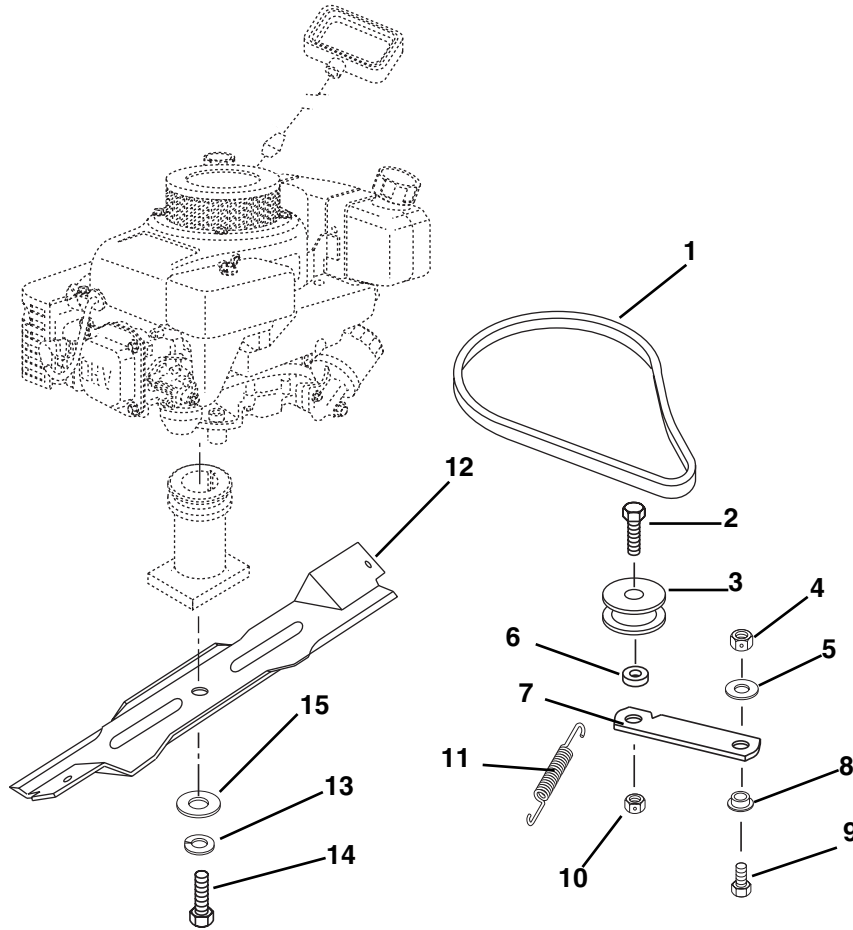
MOWER PAN AND BAG

Model 911511, 513, 514, 515, 516, 522

Item	Part No.	Qty.	Description
1	01194800	1	Bag-ConsumerBlack
2	01138751	1	Bagger Frame
3	01136559	1	Door-Catcher Plate
4	07516000	1	Button Bumper
5	07511800	2	Bumper
6	07411900	4	Screw-Tapping 12-24 x .50 Hex Washer Head (513-516, 522)
7	07414900	2	Screw-Tapping 10-24 x .38 Pan Head
8	01159759	1	Plate-Catcher (513-516, 522)
	01177759	1	Plate , Catcher (511)
9	06203900	2	Bolt-Round Head Square Neck .25-20 x .38
10	02215300	2	Nut-Push
11	08322400	1	Spring-Torsion .120 x .68 x 3.09
12	01141000	1	Pin-Door
13	71102700	1	Mulch Master Mulcher Accessory
14	06530100	2	Nut-Locking-Flange .25-20
15	06219900	2	Bolt-Round Head Square Neck .25-20 x .75 Grade 5
16	01155559	1	Hinge Base Weldment (511, 514-516, 522)
	01138259	1	Hinge Base (513)
17	06439100	1	Washer-Flat-Steel .328 x .87 x .179
18	06308000	2	Washer-Locking .25 x .077
19	06533200	2	Nut-Hex .25-20
20	01159300	1	Nut-Wing (511, 514-516, 522)
21	01158859	1	Drive Cover (511, 514-516, 522)
22	01155400	2	Trim Bumper
23	51108100	1	Mower Pan Head with Decals (511, 514-516)
	51108000	1	Mower Pan Head with Decals Push (513)
	51107900	1	Mower Pan Head Head with Decal Self Propelled Blade Brake/Clutch (522)
24	06222000	2	Bolt-Round Head Square Neck .31-18 x .50 Grade 5 (511,513-515, 522)
25	01183559	1	Front Panel (511, 513-515, 522)
26	06529800	2	Nut-Locking-Center .31-18 (511, 513-515, 522)
27	07507600	3	Grommet-Plastic
28	01173700	1	Baffle-Center
29	07415000	3	Screw-Tapping 10-16 x .62 Hex Washer Head
30	01180200	1	Side Discharge Assembly
31	01180351	1	Side Discharge Cover
32	06436200	2	Washer-Flat-Steel .406 x .812 x .065
33	06530200	2	Nut-Locking-Nylon .312-18
34	06214100	2	Bolt-Round Head Square Neck .31-18 x .75 Grade 2
35	06514900	2	Nut-Push .312
36	06530100	4	Nut-Locking-Flange .250-20 (511)
37	06538100	2	Nut-Wing #8-32 (515)
38	01178559	1	Battery Plate (515)
39	01178600	1	U-Bolt (515)

BLADE AND BELT

Model 911511, 513, 514, 515, 516

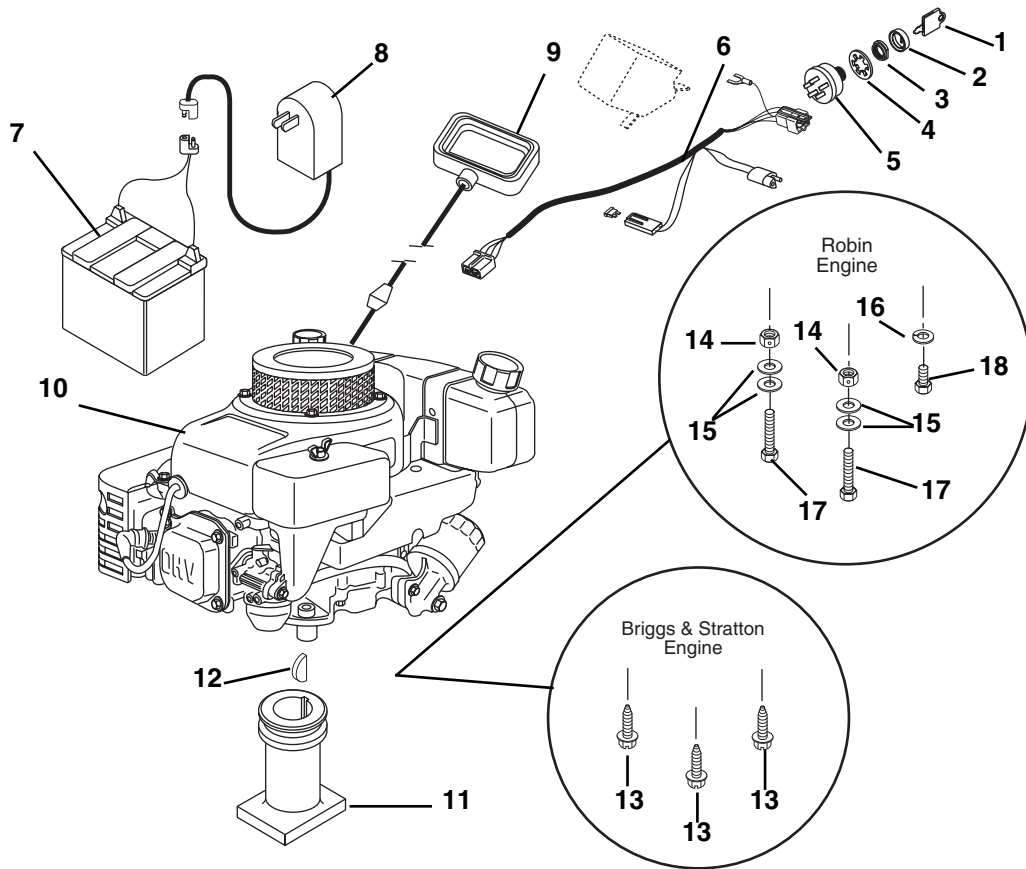


PM0141

Item	Part No.	Qty.	Description
1	07217100	1	V-Belt 3L Section (511, 514-516)
2	05963800	1	Bolt-Hex .44-14 x 1.25 Grade 5 (511, 514-516)
3	07313300	1	Idler-Flat 1.75 x .47 (511, 514-516)
4	06529800	4	Nut-Locking-Center .31 -18 (511, 514-516)
5	06436700	1	Washer-Flat-Steel .323 x .625 x .062 (511, 514-516)
6	01142000	1	Spacer .52 x .45 x .34 (511, 514-516)
7	01141200	1	Idler Arm (511, 514-516)
8	05515400	1	Bushing-Flange .325 x .501 x .250 x 1.120 (511, 514-516)
9	05947000	1	Bolt-Hex .31-18 x .75 Grade 5 (511, 514-516, 522)
10	06536400	1	Nut-Locking-Center .44-14 (511, 514-516)
11	08321100	1	Spring, Tension .043 x .44 x 3.31 (511, 514-516)
12	01137051	1	Blade, 21" Mower
13	06308800	1	Washer-Locking .38 x .094
14	05976600	1	Bolt-Hex .38-24 x 2.00 Grade 8
15	06441700	1	Washer-Flat Steel .390 x 1.50 x .125

ENGINE AND ELECTRICAL

Model 911511, 513, 514, 515, 516

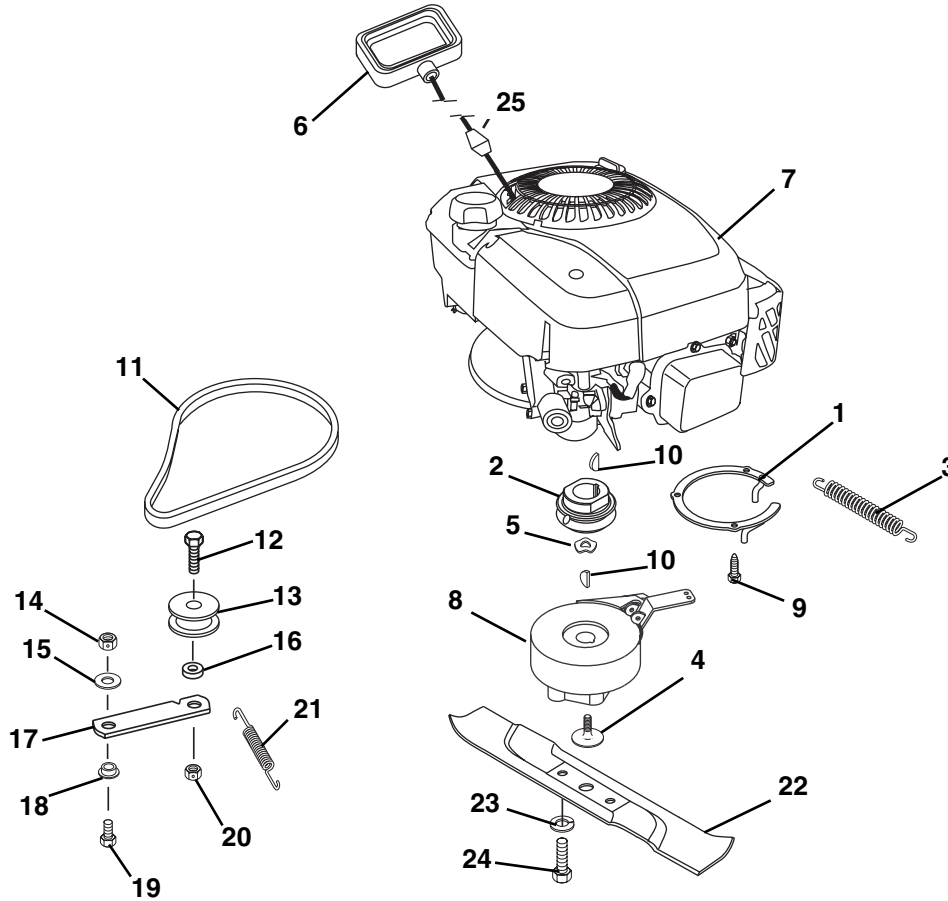


PM0133

Item	Part No.	Qty.	Description
1	02460700	1	Key with Cap (515)
2	07517700	1	Cap-Ignition Switch (515)
3	06517300	1	Nut, Panel .625-32 (515)
4	06306900	1	Washer-Locking Internal .625 x .045 (515)
5	01190600	1	Switch, Key Electric Start-LM (515)
6	01190700	1	Harness, Wire LM-Electric (515)
7	01178400	1	Battery (515)
8	01126000	1	Battery Charger (515)
9	01157100	1	Recoil Start Handle
10*	08247700	1	Engine, Robin 6 HP 4 Cycle (511)
	08258800	1	Engine, Briggs & Stratton Intek OHV 6.5HP Recoil (513, 514, 516)
	08245800	1	Engine, Briggs & Stratton Intek OHV 6.5HP Electric Start (515)
11	01178100	1	Adapter, Blade .875 Dia with Keyway (513-516)
	01121700	1	Adapter, Blade (511)
12	06600900	2	Key-Woodruff .156 x .625 x .25 SAE #6 (513-516)
	06600900	1	Key-Woodruff .156 x .625 x .25 SAE #6 (511)
13	07414100	3	Screw-Tapping .38-16 x 1.00 Hex Washer Head (513-516)
14	06529800	2	Nut-Locking-Center .31-18 (511)
15	06435800	4	Washer-Flat-Steel .312 x .734 x .065 (511)
16	06307400	1	Washer-Locking .312 x .097 Heavy (511)
17	05947500	2	Bolt-Hex .31-18 x 1.25 Grade 5 (511)
18	05947000	1	Bolt-Hex .31-18 x .75 Grade 5 (511)

ENGINE-BBC

Model 911522

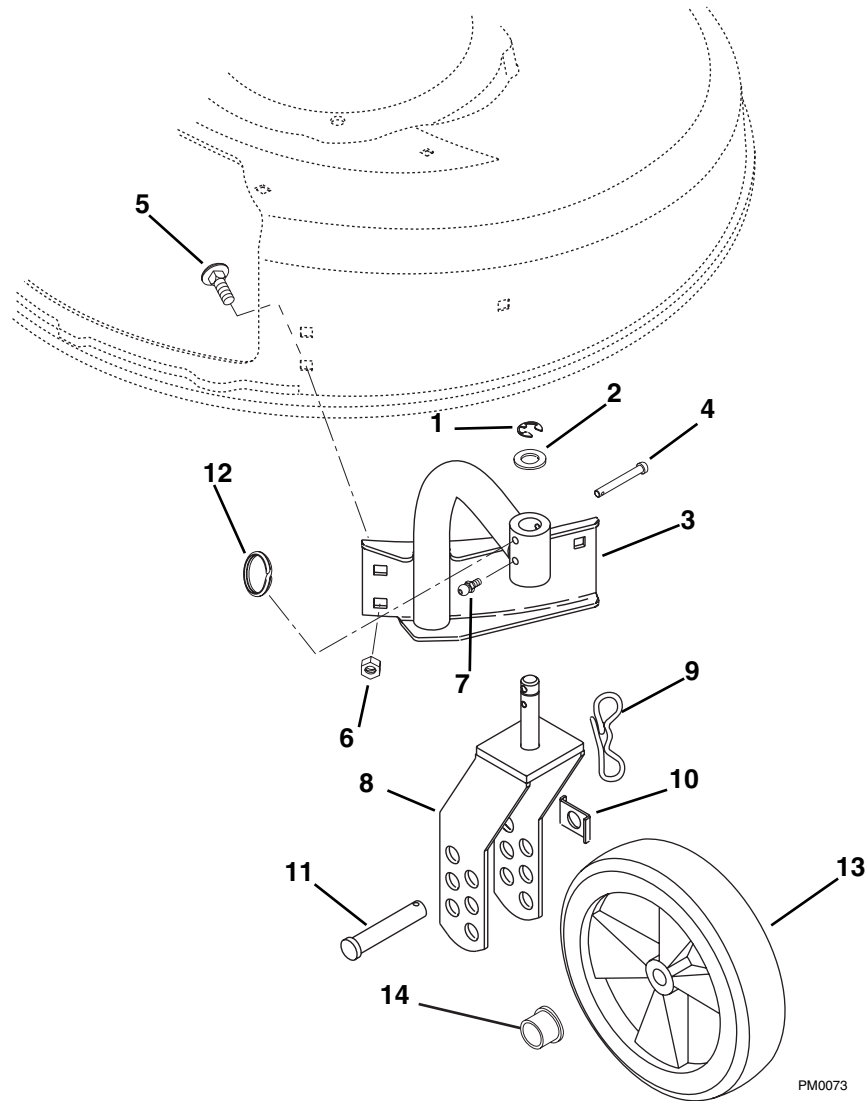


PM0451

Item	Part No.	Qty.	Description
1	01192159	1	Bracket- Spring Retainer
2	01192200	1	Pulley- Blade Brake/Clutch
3	08336400	1	Spring-Tension .1278 x .735 x 4.71
4	07063100	1	Screw-Socket Head-Special .375-24 x 1.50
5	01192900	1	Washer-Wave .88 x 1.31 x .125
6	01157100	1	Recoil Start Handle
7	08262700	1	Engine, Briggs & Stratton Intek OHV 6.5HP Recoil
8	01191600	1	Blade Brake Clutch
9	07414100	3	Screw-Tapping .38-16 x 1.00 Hex Washer Head
10	06600900	2	Key-Woodruff .156 x .625 x .25
11	07217100	1	V-Belt 3L Section
12	05962800	1	Bolt-Hex .44-14 x 1.50 Grade 5
13	07313300	1	Idler-Flat 1.75 x .47
14	06529800	1	Nut-Locking-Center .31 -18
15	06436700	1	Washer-Flat-Steel .323 x .625 x .062
16	05533300	1	Bushing-Sleeve .469 x .750 x .430
17	01141200	1	Idler Arm
18	05515400	1	Bushing-Flange .325 x .501 x .250 x 1.120
19	05947000	1	Bolt-Hex .31-18 x .75 Grade 5
20	06536400	1	Nut-Locking-Center .44-14
21	08321100	1	Spring, Tension .043 x .44 x 3.31
22	01195500	1	Blade- Blade Brake/Clutch
23	06309300	2	Washer-Locking .44 x .109 Regular
24	05943000	2	Bolt-Hex M10 x 1.5 x 25
25	01177100	1	Rope Stop

SWIVEL WHEELS AND BRACKETS

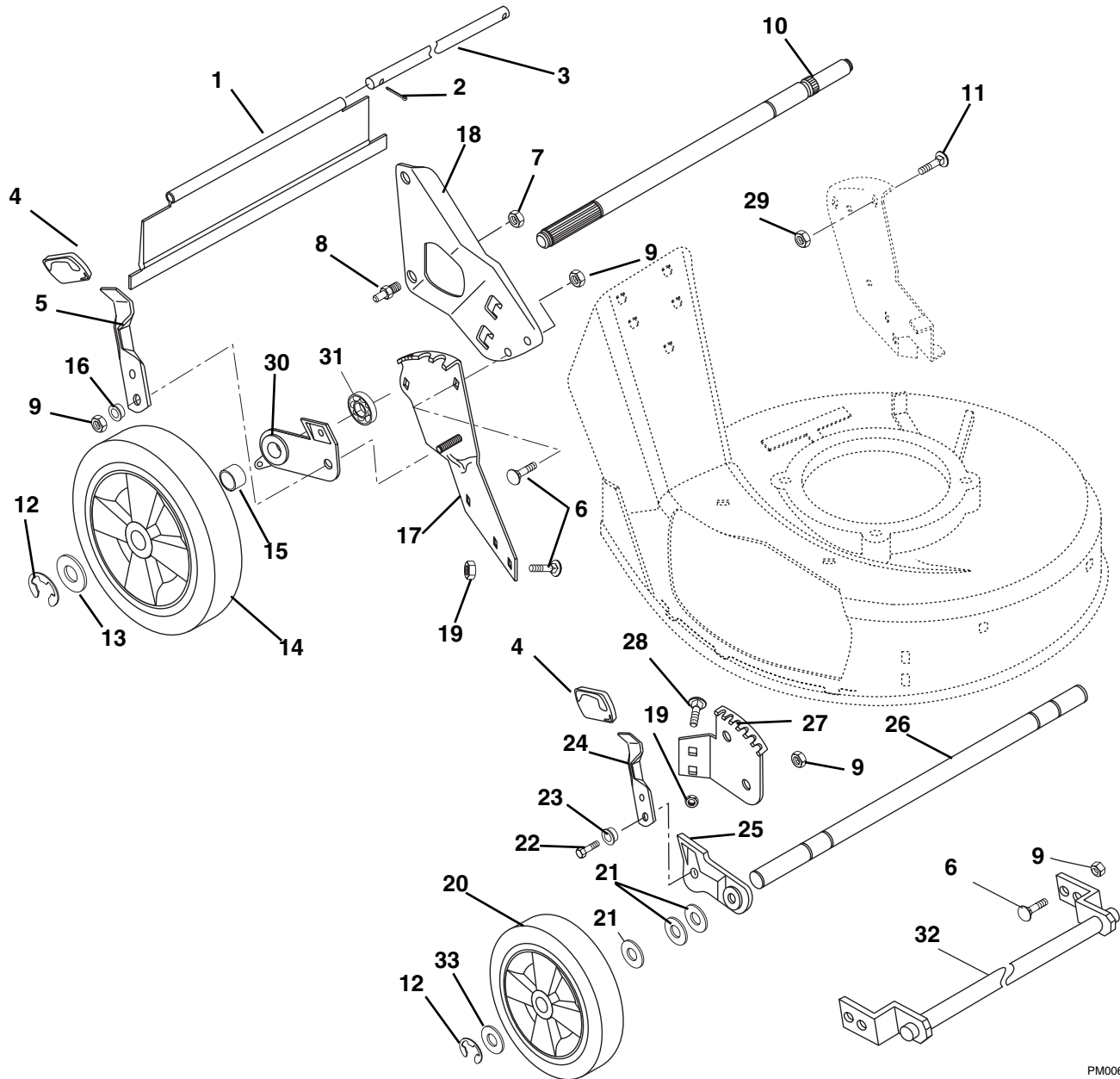
Model 911516



Item	Part No.	Qty.	Description
1	05708300	2	Ring-Retaining-External .625 x .042
2	06436100	2	Washer-Flat-Steels .630 x 1.005 x .062
3	01185257	1	Mount with Bushing, Right Arm
	01189557	1	Mount with Bushing, Left Arm
4	06814600	2	Pin-Clevis .25 x 1.75
5	06222000	6	Bolt-Round Head Square Neck .31-18 x .50 Grade 5
6	06530400	6	Nut-Hex .312-18
7	07012600	2	Fitting-Lube .25-28 x .256
8	01169357	2	Wheel Yoke Weldment
9	01190800	2	Pin, Bowtie Cotter
10	01168100	2	Axle Tab
11	01168300	2	Pin-Clevis .494 x 2.62
12	01169200	2	Ring-Kickout
13	07149900	2	Wheel
	07152400	2	Tire 7 x 1.50
14	05502100	2	Bushing-Flange .500 x .500 x .750

WHEELS AND ADJUSTERS

Model 911511, 513, 514, 515, 516, 522



PM0065

Item	Part No.	Qty.	Description
1	07522300	1	Rear Protective Guard, Self Propelled (511, 514-516, 522)
	07522400	1	Rear Protective Guard, Push (513)
2	06712400	3	Pin-Cotter .06 x .50
3	01140000	1	Rod
4	07513600	4	Knob
5	01130600	2	Height Adjustment Lever
6	06212200	9	Bolt-Round Head Square Short Neck .31-18 x .62 (513-515, 522)
	06212200	13	Bolt-Round Head Square Short Neck .31-18 x .62 (511)
7	06529600	2	Nut-Locking-Center .38-16

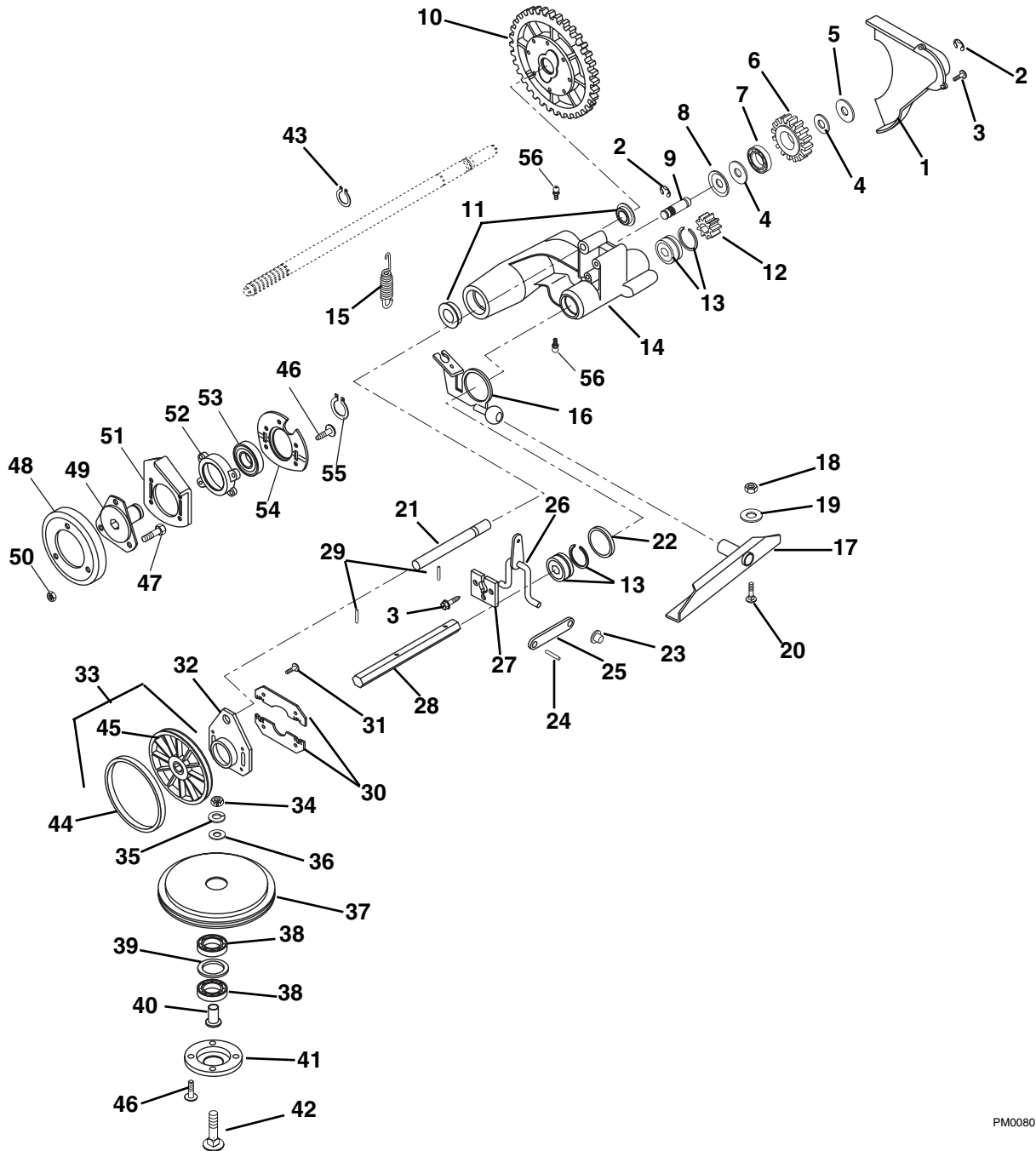
WHEELS AND ADJUSTERS

Model 911511, 513, 514, 515, 516, 522

Item	Part No.	Qty.	Description
8	01167100	2	Handlebar Stud
9	06529800	8	Nut-Locking-Center .31-18 (513-515, 522)
	06529800	12	Nut-Locking-Center .31-18 (511)
10	01149500	1	Rear Axle (511, 514-516, 522)
	01171900	1	Rear Axle Push Mower (513)
11	06221800	1	Bolt-Round Head Square Short Neck .31-18 x 1.00
12	05710200	4	Ring-Retaining-External .500 x .042
	05710200	2	Ring-Retaining-External .500 x .042 (516)
13	06436600	2	Washer-Flat-Steel .505 x .880 x .072
14	07151200	1	Wheel, Left Hand Rear (511, 514-516, 522)
	07151500	1	Wheel, Right Hand Rear (511, 514-516, 522)
	07103900	2	Tire Skin 10 x 2.0 (511, 514-516, 522)
	07152500	2	Tire 10 x 1.75 (513)
15	01149600	2	Spacer Tube (511, 514-516, 522)
	01149700	1	Spacer Tube-Push Left Hand (513)
	01149800	1	Spacer Tube-Push Right Hand (513)
16	05514800	2	Bushing-Flange .312 x .500 x .344 x .880
17	01154251	1	Rear Quadrant-Left Hand
	01154351	1	Rear Quadrant-Right Hand
18	01137251	1	Bracket-Handlebar Mounting-Right Hand (513-516, 522)
	01137151	1	Bracket-Handlebar Mounting-Left Hand (513-516, 522)
	01177451	1	Bracket-Handlebar Mounting-Right Hand (511)
	01177551	1	Bracket-Handlebar Mounting-Left Hand (511)
19	06530400	10	Nut-Locking-Flanged .31-18 (511, 513-515, 522)
20	07149900	2	Wheel-Front (511, 514-516, 522)
	07152400	2	Tire 7 x 1.50 (513)
21	06441100	6	Washer-Flat-Steel .520 x .827 x .062 (511, 513-515, 522)
22	05946900	2	Bolt-Hex .31-18 x 1.00 Grade 5 (511, 513-515, 522)
23	05514800	2	Bushing-Flange .312 x .500 x .344 x .880 (511, 513-515, 522)
24	01120000	2	Lever, Front Height Adjustment (511, 513-515, 522)
25	01119800	1	Left Hand Bracket Assembly
	01119900	1	Right Hand Bracket Assembly
26	01168900	1	Front Axle (511, 513-515, 522)
27	01154051	1	Front Quadrant, Left Hand (511, 513-515, 522)
	01154151	1	Front Quadrant, Right Hand (511, 513-515, 522)
28	06222000	4	Bolt-Round Head Square Neck .31-18 x .50 Grade 5 (511, 513-515, 522)
29	06530200	1	Nut-Locking-Nylon .31-18
30	01130700	1	Rear Adjuster Bracket-Left Hand (514-516, 522)
	01150400	1	Rear Bracket and Bearing Assembly (514-516, 522)
	01131300	1	Rear Bracket and Bearing Assembly-Right Hand (513)
	01131200	1	Rear Bracket and Bearing Assembly-Left Hand (513)
	01130800	1	Rear Adjuster Bracket-Right Hand (511)
	01158200	1	Rear Adjuster Bracket-Left Hand (511)
31	05417600	1	Bearing-Ball .625 x 1.383 x .50 (511)
32	01156051	1	De-Thatcher Retainer Weldment (511)
33	06436600	2	Washer-Flat-Steel .505 x .880 x .072 (511, 513-515, 522)

FRICTION WHEEL AND DRIVE

Model 911511, 514, 515, 516, 522



PM0080

Item	Part No.	Qty.	Description
1	01121051	1	Gear Cover
2	05705900	2	Ring-Retaining-External .438 x .035
3	07411900	5	Screw-Tapping 12-24 x .50 Hex Washer Head
4	06441100	2	Washer - Flat - Steel .520 x .827 x .062
5	06425300	1	Washer - Flat - Steel .531 x 1.00 x .063
6	01131700	1	Idler Gear
7*	05408000	1	Bearing - Ball .50 x 1.38 x .437
8	01135100	1	Retainer
9	01139700	1	Idler Shaft
10	51102400	1	Differential Assembly
11*	05417600	2	Bearing-Ball .625 x 1.383 x .50 (511)

FRICTION WHEEL AND DRIVE

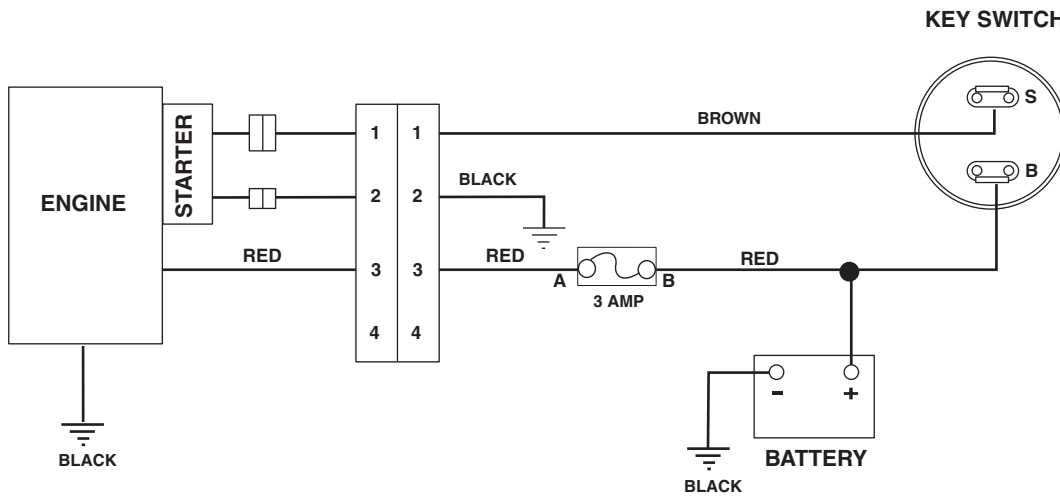
Model 911511, 514, 515, 516, 522

Item	Part No.	Qty.	Description
12	02201100	1	Gear-Pinion
13	05413700	2	Bearing - Ball .562 x 1.375 x .437
14	01140600	1	Drive Mount
15	08325200	1	Spring-Tension .051 x .60 x 2.25
16	01137900	1	Drive Actuator Weldment
17	01161951	1	Pivot Channel Weldment
18	06529800	2	Nut-Locking-Center .31-18
19	06437200	2	Washer-Flat-Steel .344 x .688 x .065
20	06212200	2	Bolt-Round Head Square Short Neck .31-18 x .62
21	01125100	1	Rod-Guide
22	06421600	1	Washer - Flat - Steel 1.390 x 2.00 x .020
23	02215300	2	Push Nut .25
24	05803500	2	Pin-Roll .125 x .50 (514-516, 522)
	05804800	2	Pin-Roll .125 x .63 (511)
25	01124200	2	Shift Link
26	01123600	1	Shift Arm Weldment
27	01125000	1	Retainer Plate
28	01125700	1	Hex Shaft
29	05800500	2	Pin - Roll .188 x .88
30	01153800	2	Thrust Plate (514-516, 522)
31	07412100	4	Screw-Tapping 10-24 x .375 Hex Washer Head (514-516, 522)
32	01153900	1	Guide-Plate (514-516, 522)
33	51102500	1	Friction Wheel Assembly (514-516, 522)
34	06529200	1	Nut-Hex .31-18
35	06307400	1	Washer-Locking .312 x .097 Heavy
36	06439400	1	Washer Flat-Steel .328 x .875 x .062
37	01127300	1	Friction Sheave
38	05435100	2	Bearing-Ball .625 x 1.375 x .43
39	06420200	1	Washer- Flat-Steel 1.062 x 1.344 x .032
40	01127400	1	Spindle, Bearing
41	01127500	1	Bearing, Retainer
42	06220200	1	Bolt-Round Head Square Neck .31-18 x 1.75 Grade 5
43	05711900	2	Ring-Retaining-External .579 x .930
44	01190400	1	Friction Ring (514-516, 522)
45	01149200	1	Friction Wheel Hub (514-516, 522)
46	07411900	4	Screw-Tapping 12-24 x .50 Hex Washer Head (514-516, 522)
	07411900	8	Screw-Tapping 12-24 x .50 Hex Washer Head (511)
47	05947900	3	Bolt-Hex .25-20 x .50 Grade 5 (511)
48	03240700	1	Disc, Friction (511)
49	01133500	1	Hub, Friction Wheel (511))
50	06529700	3	Nut-Locking-Center .25-20 (511)
51	01132700	1	Bearing Plate (511)
52	01131800	1	Bearing Retainer (511)
53	05416000	1	Bearing Ball 1.00 x 2.00 x .56 (511))
54	01119200	1	Bearing Retainer (511)
55	05706200	1	Ring-Retaining - External 1.00 x .042 (511))
56	07012600	2	Fitting-Lube .25-28 x .256 (511)

* Available as individual components or part of 51105600 Service Kit which consists of (2) 05435100, (1) 05408000, (2) 05413700 and (2) 05417600.

ELECTRICAL AND CONTINUITY DIAGRAM

Model 911522

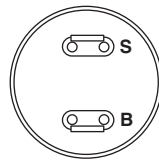


PM0470

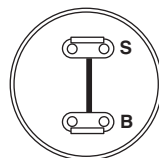
The diagram below shows the various states of connection for electrical components. The solid lines on switches show continuity.

NOTE: All switches are viewed from the rear.

Key Switch (01190600)



OFF POSITION



START POSITION

PM0480



Ariens Company
655 West Ryan Street
P.O. Box 157
Brillion, WI 54110-0157
920-756-2141
Fax 920-756-2407
www.ariens.com