

OWNERS MANUAL

Ariens

6 & 8 H.P. TRACTOR and SNO-THRO ATTACHMENT

SERIAL NUMBERS

MODEL 910013 - 007000
(32" Sno-Thro Attach)

MODEL 910017 - 005000
(24" Sno-Thro Attach)

MODEL 910018 - 002001
(8 H.P. 24" w/diff)

MODEL 910019 - 000101
(6 H.P. 24" w/diff)

MODEL 910020 - 000101
(8 H.P. Tractor w/diff)

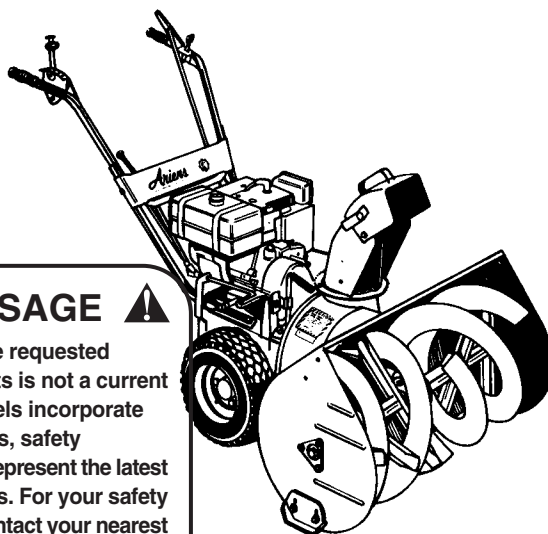
AND UP

PART NO. 10497B

PRICE \$50

⚠ SAFETY MESSAGE ⚠

The product for which you have requested information or replacement parts is not a current product. The replacement models incorporate product designs, safety features, safety instructions or warnings which represent the latest "State Of The Art" developments. For your safety and those around you please contact your nearest Ariens/Gravely Dealer for a demonstration of the current product safety provisions and features.



WARRANTY

Ariens Company hereby warrants to the original retail purchaser all new products of its own manufacture to be free from defects in material and workmanship, for a period of one year except when used commercially or for rental purposes in which case the warranty period shall be for 45 days from date of original purchase, subject to the following exceptions:

1. Engine parts and service must be handled by the respective engine manufacturer.
2. A 90 day warranty will be extended on belts, tires, throttle controls, or any other items subject to normal wear.
3. No warranty is extended to any equipment which has been misused, neglected or damaged by accident. Ariens Company shall not be responsible for damage in transit or handling by any common carrier, and under no circumstances, within or without the warranty period, will the Company be liable for damages for loss of use, or damages resulting from delay, or any consequential damages.

It is the consumer's responsibility for: (1) Normal maintenance as greasing, gear case lubrication, minor adjustments, etc. (2) Transportation of any Ariens product to and from the place the warranty work is performed.

Ariens warranty WILL NOT APPLY to any products repaired or altered by anyone other than an Authorized Service Distributor or Authorized Service Dealer.

Any transportation charges incurred on any equipment claimed defective, which shall include time and expense of the distributor or dealer for pickup, and/or return of the equipment, shall be borne by the purchaser.

Ariens Company reserves the right to incorporate any changes in design into its products without obligation to make such changes on units previously manufactured.

DISCLAIMER OF FURTHER WARRANTY

There are no warranties, expressed or implied, except as set forth above. There is no warranty of merchantability. There are no warranties which extend beyond the description of the product contained herein. In no event shall the company be liable for indirect, special or consequential damages (such as loss of anticipated profits) in connection with the retail purchaser's use of the product.

ARIENS COMPANY

Ariens



BRILLION, WIS. 54110

SAFETY FIRST



Know your controls and how to stop quickly. Do not operate without proper instructions. Read the owner's manual.

Handle gasoline with care. It is highly flammable. Never add gasoline to a running or hot engine. Wipe up spilled gasoline. Do not run or fill engine indoors. Exhaust fumes are dangerous. Keep safety devices in place. Keep all nuts, bolts and screws tight.



Inspect work area and clear of objects which might be picked up and thrown.

Keep children and pets a safe distance away. Never direct discharge at bystanders nor allow anyone in front of machine.



Disengage clutch and stop motor before cleaning and discharge, removing obstacles, making adjustments, and when leaving operating position. Never use hands to clear snow from rakes or discharge chute.

CONTROLS

- ① **SPEED SELECTOR:** Sets speed of tractor. Change speed or shift to reverse, without depressing clutch handle.
- ② **THROTTLE:** Controls engine speed. Move throttle to stop position to stop engine. Move throttle to park position after engine has stopped.
- ③ **TRACTOR CLUTCH:** Activates tractor drive. Depress to move tractor, release to stop.
- ④ **HAND CRANK:** Turns discharge chute 240° so snow can be thrown away from area being cleared.
- ⑤ **DEFLECTOR:** Controls the height the snow can be thrown.
- ⑥ **RECOIL STARTER:** Pull to start engine.
- ⑦ **SNO-THRO CLUTCH:** Activates auger and impeller.
- ⑧ **RUNNERS:** Controls the distance the scraper blade is held above the surface being cleared.
- ⑨ **CHOKE:** Move choke to choke position to start engine.

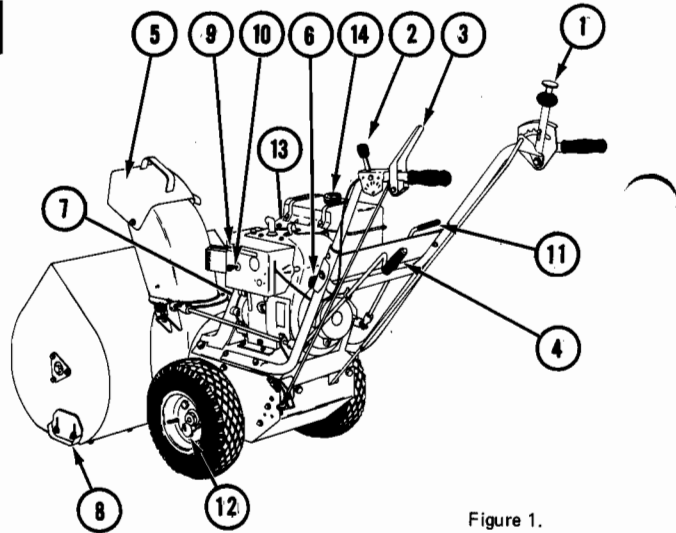


Figure 1.

- ⑩ **PRIMER:** Choke should be in choke position when priming engine. Depress and hold primer while pulling recoil starter once. Release primer, pull recoil starter to start engine.
- ⑪ **ENGINE CLUTCH:** Engage Sno-Thro clutch before engaging engine clutch, lift handle to engage. **CAUTION:** Ease in handle to avoid belt damage.
- ⑫ **DIFFERENTIAL LOCK:** In position, both wheels pull for snow removal. Out position, engages differential for easy turning with lawn attachments.

OPERATION

BEFORE STARTING:

Fill crankcase ⑬ with Ariens Sno-Thro oil 5W-20 when using Sno-Thro.

Use Ariens Gard-N-Yard oil MS classification SAE-30 oil when using lawn attachments.

Fill fuel tank ⑭ with fresh, clean, regular gasoline.

Do not mix oil with gasoline.

Make visual check with regards to safety precautions, obstructions, lubrication and maintenance.

CAUTION:

If tractor is to be used with lawn attachments, be sure heater box is removed and air cleaner installed. Follow detailed instructions packed with attachment.

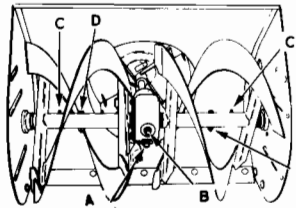


Figure 2.

TO START:

- Move speed selector (1) to neutral.
- Move engine clutch (11) to out position.
- Move choke lever (9) to choke position.
- Move throttle (2) to fast position.
- Pull recoil starter (6) to start engine. Depress and hold primer for one pull if temperature is below 10° fahrenheit.
- Move choke (9) to no choke gradually as engine warms up.

TO TRANSPORT:

- Move Sno-Thro clutch (7) to out position.
- Engage engine clutch (11).
- Move speed selector (1) to desired speed.
- Press down on handle bars to raise front of Sno-thro slightly off the ground.
- Depress tractor clutch (3) to transport unit.

TO OPERATE:

- Disengage engine clutch (11).
 - Move deflector (5) to desired height.
 - Turn hand crank (4) to direct discharge chute.
 - Engage engine clutch (11).
 - Move Sno-Thro clutch (7) to in position.
 - Move speed selector (1) to desired speed.
 - Move throttle (2) to desired speed.
 - Depress tractor clutch (3) to move tractor.
- Speed of the machine is controlled by the throttle and speed selector.

TO STOP:

- Release tractor clutch (3).
- Disengage engine clutch (11).
- Disengage Sno-Thro clutch (7).
- Move speed selector (1) to neutral.
- Move throttle (2) to stop.
- Move throttle to park after engine has stopped.

MAINTENANCE

RUNNERS

An adjustable runner is provided on each side of the blower housing. Raising or lowering these runners controls the distance the scraper blade is held above the surface being cleared. Runner adjustment is accomplished by loosening the two nuts on each runner. Move to the desired position and retighten the nuts. In wet snow which packs easily, it may be necessary to remove the runners or turn them upside down so the scraper blade will scrape clean.

DRIVE DISC ADJUSTMENT

Be sure clutch handle is adjusted parallel to nylon block, as shown when in the RELEASED POSITION.

Loosen set screw. Move shift lever to NEUTRAL. Depress clutch handle completely down and secure in engaged position. With clutch engaged, turn adjustment rod in or out until friction wheel (See fig. 4) just starts to slip when pushing Sno-Thro FORWARD on the floor. Release clutch handle. Readjust drive by turning adjustment rod two full turns in (clockwise).

NOTE: Be sure to readjust drive when installing new friction wheel.

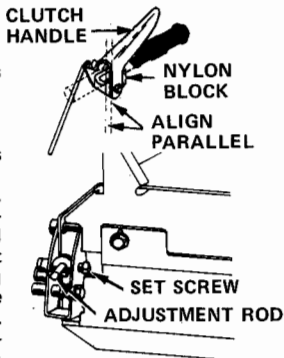


Figure 3

STORAGE

ENGINE: Follow detail instructions in the engine manual.

SNO-THRO: Lubricate, clean and repaint as necessary. Cover and store in dry place.

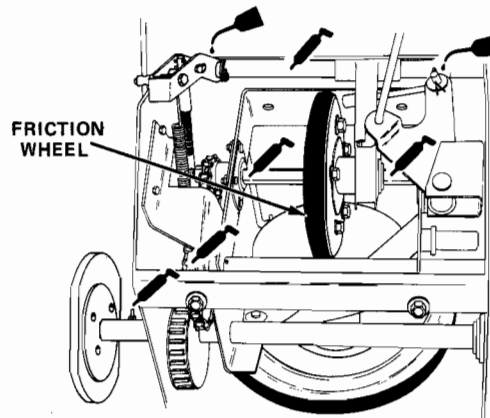


Figure 4.

LUBRICATION

ENGINE

Fill crankcase (13) with Ariens Sno-Thro oil 5W-20 when using Sno-Thro.

Use Ariens Gard-N-Yard oil MS classification SAE-30 when using lawn attachments.

Fill fuel tank (14) with fresh, clean, regular gasoline.

NOTE: For detailed instructions on engine refer to manufacturer's booklet packed with the machine.

TRACTOR DRIVE

At start of season, grease gears, hex and axle shaft as indicated in figure 4. Use Ariens Moly Lithium grease.

Put two or three drops of light oil on shift lever and other linkage points. CAUTION: ⚠ Do not allow grease or oil to come in contact with friction wheel, drive disc or belts.

SNO-THRO UNIT

Drain and refill Sno-Thro gear case with about five ounces of Ariens Premium Gear Lubricant MP-90 every 25 hours operation.

To drain and refill, remove fill plug (B), remove drain plug (A) and allow oil to drain. Tip machine back on handlebars. Pour oil into fill hole (B) until it starts to run out of drain hole. See figure 2.

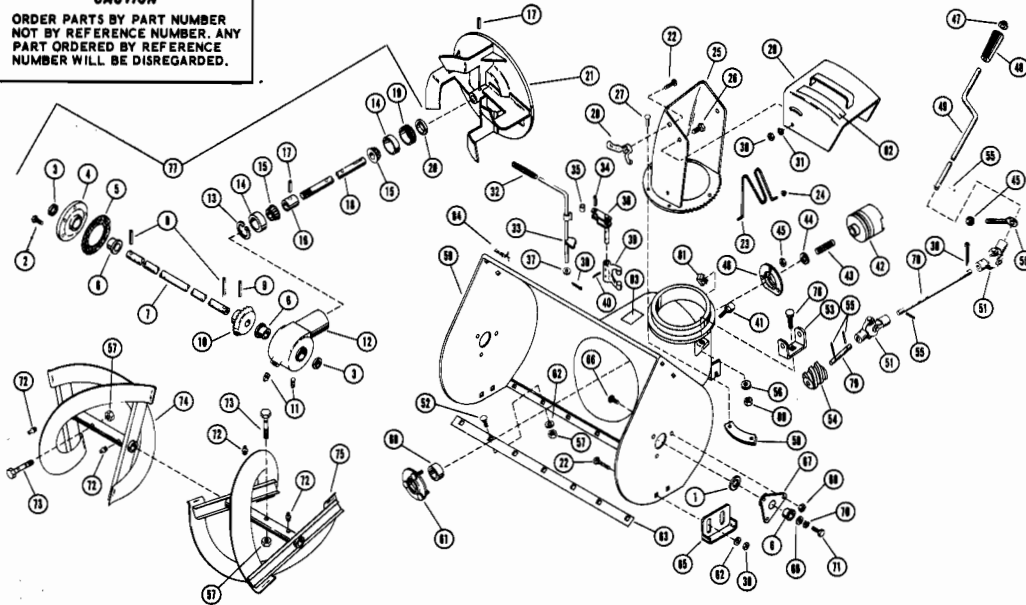
Replace drain and fill plugs. Grease rake shaft (C) periodically or each time a shear bolt (D) is replaced. At the end of season, remove shear bolts, grease rake shaft, turn rakes on shaft several times and replace shear bolts. Use Ariens Moly Lithium grease.

SERVICE MANUAL

Service Technique Manual is available. Order by number 000019 and remit \$2.50 to Ariens Co., 655 W. Ryan St. Brillion, Wis. 54110.

CAUTION

ORDER PARTS BY PART NUMBER
NOT BY REFERENCE NUMBER. ANY
PART ORDERED BY REFERENCE
NUMBER WILL BE DISREGARDED.

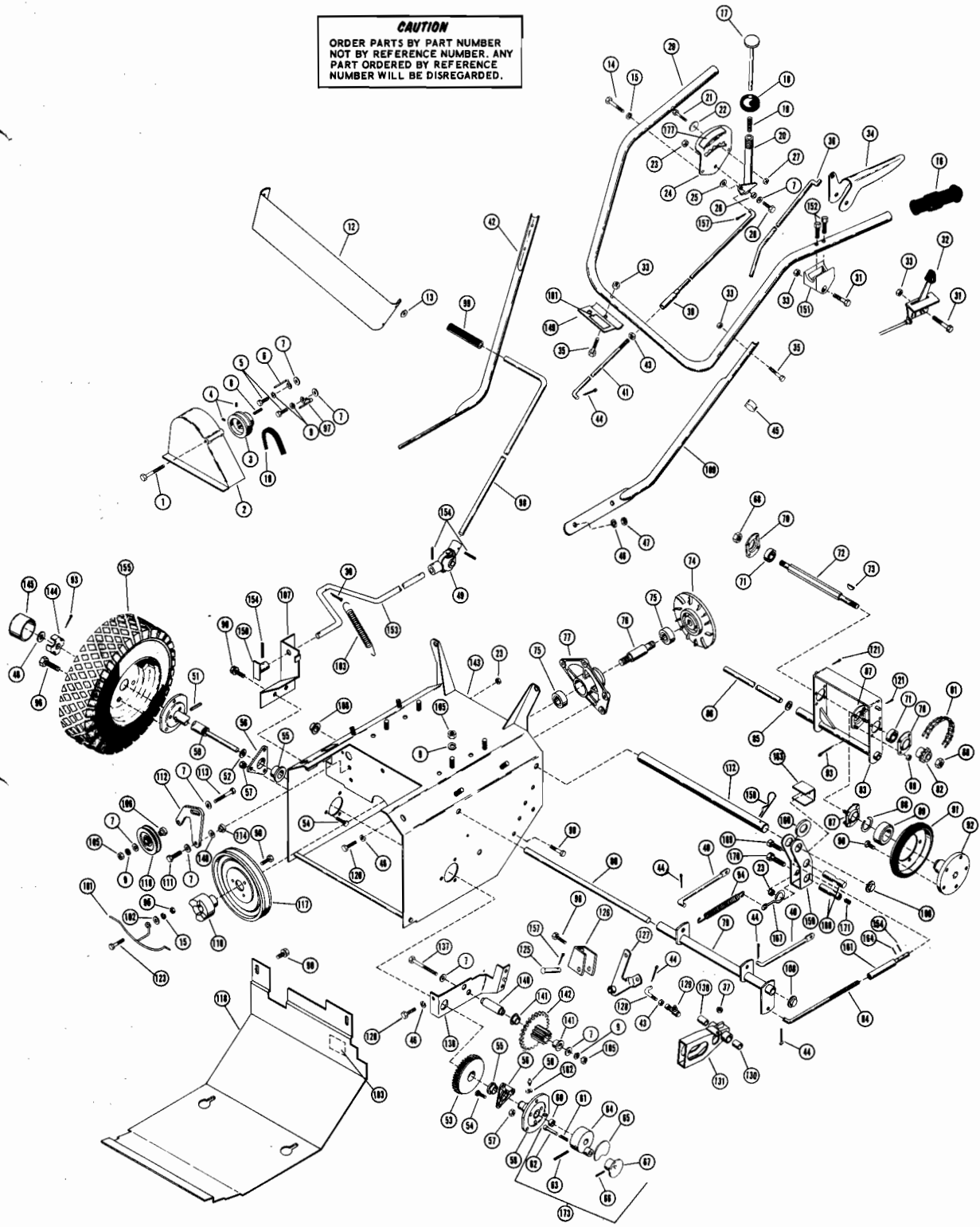


REF NO.	PART NO.	DESCRIPTION	NO. REQ'D				REF NO.	PART NO.	DESCRIPTION	NO. REQ'D			
			910019	910013	910017	910018				910019	910013	910017	910018
1	64046	Washer 1.505 O.D. x 1.005 I.D. x 1/16	2	2	2	2	49	10487	Chute Control Crank (For 8 H.P. Only)	1	1	1	1
2	70012	Flange Whizlock Screw 1/4-20 x 3/4	5	5	5	5	49	10478	Chute Control Crank	1	1	1	1
3	56061	Seal	2	2	2	2	50	10289	Rod Hanger	1	1	1	1
4	10181	Gear Case Flange	1	1	1	1	51	622010	Universal Joint	2	2	2	2
5	10108	Gasket	1	1	1	1	52	62026	Carriage Bolt 5/16-18 x 5/8	5	7	5	5
6	55035	Bushing	4	4	4	4	53	22123	Worm Clevis	1	1	1	1
7	10384	Front Gear Shaft 32"	1	1	1	1	54	22110	Worm Gear	1	1	1	1
7	10299	Front Gear Shaft 24"	1	1	1	1	55	58034	Roll Pin 1/8 x 3/4	1	4	4	4
8	58030	Roll Pin 3/16 x 1-1/2	2	2	2	2	56	63023	Lockwasher	1	1	1	1
9	58022	Roll Pin 5/16 x 1-3/8	1	1	1	1	57	65042	Locknut 5/16-18	7	9	7	7
*10	10183	Helicon Gear	1	1	1	1	58	10438	Chute Clamp	3	3	3	3
11	1138	Pipe Plug 3/8 Sq. Hd.	2	2	2	2	59	510010	Blower Housing 24"	1	1	1	1
12	10180	Gear Case	1	1	1	1	59	510011	Blower Housing 32"	1	1	1	1
13	57032	Snap Ring	1	1	1	1	60	54063	Ball Bearing	3	1	1	1
14	54044	Bearing Cup	2	2	2	2	61	3017	Bearing Flange	1	1	1	1
15	54045	Bearing Cons	2	2	2	2	62	64002	Washer 5/16	9	11	9	9
16	10107	Bearing Spacer	1	1	1	1	63	10387	Scraper Blade	1	1	1	1
17	58007	Roll Pin 1/4 x 1-1/4	3	3	3	3	63	10164	Scraper Blade	1	1	1	1
*18	10177	Helicon Pinion Shaft	1	1	1	1	65	10165	Runner	2	2	2	2
19	10371	Adjustment Plug	1	1	1	1	66	70011	Ribbed Neck Bolt 1/4-20 x 5/8	6	6	6	6
20	56062	Seal	1	1	1	1	67	10184	Bearing Support	2	2	2	2
21	10178	Fan	1	1	1	1	68	65056	Whizlock Nut 1/4-20	6	6	6	6
22	62010	Carriage Bolt 3/8-16 x 3/4	5	5	5	5	69	64047	Washer 1.441 O.D. x .511 I.D. x 1/8	2	2	2	2
23	10393	Safety Wire	1	1	1	1	70	63006	Lockwasher 1/2 Std.	2	2	2	2
24	22122	Fastener	2	2	2	2	71	58024	Cap Screw 1/2-13 x 1 H.H.	2	2	2	2
25	10437	Discharge Chute	1	1	1	1	72	22093	Zerk Fitting	4	4	4	4
26	58023	Cap Screw 3/8-16 x 3/4 H.H.	2	2	2	2	73	10195	Shear Bolt	2	2	2	2
27	74026	Taprite No. 10-24 x 3/8	6	6	6	6	74	524003	R.H. Rake 32" Includes Zerks	1	1	1	1
28	10193	Wing Nut	1	1	1	1	74	510007	R.H. Rake 24" Includes Zerks	1	1	1	1
28	510012	Deflector	1	1	1	1	75	524004	L.H. Rake 32" Includes Zerks	1	1	1	1
30	65039	Locknut 3/8-16	6	6	6	6	75	510008	L.H. Rake 24" Includes Zerks	1	1	1	1
31	63004	Lockwasher 3/8 Std.	2	2	2	2	76	62011	Carriage Bolt 5/16-18 x 3/4	1	1	1	1
32	75004	Grip 1/2 I.D.	1	1	1	1	77	510002	32" Gear Case Assembly	1	1	1	1
33	10390	Fork Cam	1	1	1	1	77	610984	24" Gear Case Assembly	1	1	1	1
34	58017	Roll Pin 5/16 x 1-1/4	1	1	1	1	78	10488	Connector Rod	1	1	1	1
35	3034	Roller	1	1	1	1	79	10494	Worm Shaft	1	1	1	1
36	10186	Fork Shaft	1	1	1	1	80	65015	Nut 5/16-18	1	1	1	1
37	10260	Wave Washer	1	1	1	1	81	70026	Nut Retainer 3/8-16	2	2	2	2
38	67004	Cotter Pin 1/8 x 1	2	2	2	2	82	78222	Caution Label	1	1	1	1
39	1008	Clutch Fork	1	1	1	1	83	78055	Clutch Instruction Decal	1	1	1	1
40	58016	Roll Pin 3/16 x 1	2	2	2	2	84	78174	Ariens Nameplate	1	1	1	1
41	70031	Flange Whizlock Screw 3/8-16 x 3/4	2	2	2	2							
42	10176	Jaw Clutch	1	1	1	1							
43	83014	Spring	1	1	1	1							
44	64048	Washer 1.375 O.D. x .755 I.D. x 1/16	1	1	1	1							
45	65040	Locknut 1/4-20	4	4	4	4							
46	10142	Bearing Flange	1	1	1	1							
47	10198	Cap	1	2	2	1							
48	75039	Grip	1	2	2	1							

NOTE *10183 and 10177 Sold In Pairs Only

Use Ariens MP 90 Premium Gear Lubricant
in 10180 Gear Case

CAUTION
ORDER PARTS BY PART NUMBER
NOT BY REFERENCE NUMBER. ANY
PART ORDERED BY REFERENCE
NUMBER WILL BE DISREGARDED.



REF NO.	PART NO.	STOCK CODE	DESCRIPTION	NO. REQ'D			REF NO.	PART NO.	STOCK CODE	DESCRIPTION	NO. REQ'D		
				910019	910018	910020					910019	910018	910020
1	70013	M	Belt Cover Bolt	1	1		99	75013	M	Grip	1	1	
2	10590	F	Outer Belt Guard	1	1		101	10492	F	Belt Finger	1	1	
3	10238	M	Engine Sheave	1	1		102	64007	M	Washer - 1/4 Std.	1	1	
3	10477	M	Engine Sheave	1	1		103	83004	M	Spring	1	1	
4	60012	M	Setcrew - 5/16 - 18 x 3/8 Nylok	2	2		105	85015	M	Nut - 5/16-18 Hex, Plated	6	6	
5	59053	S	Cap Screw - 5/16-24 UNF x 3/4 H.H., Z.P.	2	2		106	10380	M	Bearing Spacer	1	1	
6	10160	F	R.H. Belt Finger	1	1		107	10479	M	Clutch Bracket	1	1	
7	64002	M	Washer - 5/16 Wrought Plated	9	9		108	12085	M	Cap	3	3	
8	86013	S	Key - SAE 1035	1	1		109	10157	M	L.H. Lower Handle Bar	1	1	
8	86018	S	Key - SAE 1035	1	1		109	10356	M	L.H. Lower Handle Bar	1	1	
9	63003	M	Lockwasher - 5/16 SAE Std. Plated	8	8		110	12132	M	Idler	1	1	
10	72047	F	Belt	1	1		111	59069	M	Cap Screw - 5/16-18 UNC x 1-1/4 H.H., Plated	1	1	
10	72072	F	Belt	1	1		112	10389	M	Idler Arm	1	1	
12	2033	O	Handle Bar Panel	1	1		113	59073	M	Cap Screw 5/16-18 UNC x 1-3/4 H.H., Plated	1	1	
13	10196	M	Handle Bar Washer	2	2		114	10361	M	Shoulder Spacer	1	1	
14	58056	S	Cap Screw - 1/4-20 UNC x 1-1/4 H.H. Plated	2	2		115	10205	F	Jaw Coupling	1	1	
15	63062	M	Lockwasher - 1/4 SAE Std., Plated	3	3		117	10239	M	Driven Sheave	1	1	
16	75006	M	Grip	2	2		118	10460	S	Bottom Cover	1	1	
17	10293	S	Shift Release Handle	1	1		120	59023	M	Cap Screw - 3/8-16 UNC x 3/4 H.H., Plated	4	4	
18	10248	S	Shift Ball	1	1		121	67019	M	Hair Pin Cotter	2	2	
19	83015	M	Spring	1	1		122	10545	M	Clutch Rod	1	1	
20	10232	S	Shift Handle	1	1		123	59001	M	Cap Screw - 1/4-20 x 3/4	1	1	
21	59072	M	Cap Screw - 1/4-20 UNC x 1-1/4 H.H., H.T.	1	1		125	10144	M	Clevis Pin	1	1	
22	64037	M	Washer - 9/32 I.D. x 1-1/4 O.D. x 1/16 Plated	1	1		125	10215	S	Lever Bracket	1	1	
23	65042	M	Locknut - 5/16-18 Hex, Plated	3	3		127	10476	S	Transfer Lever	1	1	
24	10231	S	Shift Quadrant	1	1		128	10484	S	Connecting Link	1	1	
25	64043	M	Washer - SAE 3/8-13/32 I.D. x 13/16 O.D. x 1/16 Plated	1	1		129	3086	F	Ball Joint	1	1	
26	8071	M	Spacer Bushing	1	1		130	55040	M	Bushing	2	2	
27	65070	M	Locknut - 1/4-20	1	1		131	510009	S	Sliding Fork (Includes Bushing)	1	1	
28	59022	F	Cap Screw - 5/16-18 UNC x 3/4 H.H., Z.P.	1	1		137	59074	S	Cap Screw - 5/16-18 UNC x 2-3/4 H.H., Plated	1	1	
29	10464	M	Upper Handle Bar	1	1		139	10462	M	Support Bracket	1	1	
29	10463	M	Upper Handle Bar	1	1		140	10208	S	Pinion Stub Shaft	1	1	
30	67018	M	Cotter Pin - 1/8 x 1/2	1	1		141	55026	M	Bushing	2	2	
31	59062	M	Cap Screw - 1/4-20 x 1-3/4	2	2		142	524002	M	Pinion and Sprocket (Includes Bushings)	1	1	
32	69085	F	Throttle Control	1	1		143	10458	O	Tractor Frame	1	1	
32	69086	F	Throttle Control	1	1		143	10459	S	Tractor Frame	1	1	
33	65040	M	Locknut - 1/4-20 Hex, Plated	7	7		144	3376	S	Spindle Cup	1	1	
34	22071	M	Clutch Handle	1	1		145	3377	S	Hub Cap	1	1	
35	59050	M	Cap Screw - 1/4-20 UNC x 1-1/2 H.H. Plated	5	5		148	64028	M	Washer - .505 I.D., .755 O.D. x 34 GA.	1	1	
36	10465	S	Clutch Rod	1	1		149	10483	S	Rod Hanger Bracket	1	1	
37	65043	M	Locknut - 5/16-24 Hex, Plated	1	1		150	10481	M	Clutch Interlock Lever	1	1	
39	10235	M	Upper Shift Rod	1	1		151	22129	S	Handle Pivot	1	1	
40	10472	S	Clutch Link	2	2		152	74039	S	Tapping Screws	2	2	
41	10228	S	Lower Shift Rod	1	1		153	10480	S	Engagement Rod	1	1	
42	10156	M	R.H. Lower Handle Bar	1	1		154	58034	S	Roll Pin	4	4	
42	10385	M	R.H. Lower Handle Bar	1	1		155	610895	M	Tire and Wheel Assembly consisting of: Req'd per Wheel	2	2	
43	65031	S	Nut - 5/16-24 Hex, Plated	2	2								
44	67001	M	Cotter Pin - 3/32 x 3/4 Plated	5	5								
45	68012	M	Cable Clamp	1	1								
46	63004	M	Lockwasher - 3/8 SAE Std. Plated	8	8								
47	65018	M	Nut - 3/8-16 Hex, Plated	4	4								
48	10366	M	Push Nut	1	1								
49	622010	M	Universal Joint	1	1		157	67004	M	Tire (Carlisle Stud Tread Tire Available Only)	1	1	
50	10370	M	R.H. Axle Shaft	1	1		158	67002	S	71050 Tube	1	1	
51	58003	M	Roll Pin - 3/16 x 1-1/4	1	1		159	10541	M	71052 Rim	1	1	
52	64036	M	Washer - .880 I.D. x 1.3880 O.D. x .062	1	1		160	64058	S	Cotter Pin 1/8 x 1 Plated	2	2	
53	612999	M	Differential Assembly	1	1		161	10543	M	Clutch Engagement Yoke	1	1	
54	70011	M	Ribbed Neck Bolt - 1/4-20 x 5/8 Plated	6	6		162	63025	S	Washer - .500 to .505 I.D. x 1 O.D. x .062	1	1	
55	55030	M	Bushing	2	2		163	10542	M	Adjustment Tube	1	1	
56	12023	M	Bearing Support	2	2		164	58035	M	Lockwasher	1	1	
57	65056	M	Flange Whizlock Nut - 1/4-20 Plated	6	6		167	10540	M	Adapter Spacer	1	1	
58	22093	M	Zerk Fitting	1	1		168	22135	M	Roll Pin 1/8 x 1/2	1	1	
59	610938	M	L.H. Axle	1	1		169	60026	M	Spring Hook	1	1	
60	55028	M	Bushing	2	2		170	59002	M	Rod Adapter	2	2	
61	83007	M	Spring	1	1		171	60012	M	Setcrew - 5/16-18 x 1/2	1	1	
62	10374	M	Pin	1	1		172	10545	M	Cap Screw - 5/16-18 x 5/8	1	1	
63	58042	M	Groove Pin	1	1		173	510004	M	Setcrew - 5/16-18 x 3/8	1	1	
64	10372	M	Lockout Hub	1	1		174	10373	M	Clutch Rod	1	1	
65	78038	S	Differential Lock Decal	1	1		177	78016	O	Lockout Hub Assembly	1	1	
66	58032	M	Roll Pin - 3/32 x 1	1	1		181	78230	O	Carburator Cover	1	1	
67	10375	M	Knob	1	1		183	78296	O	Sno Shift Label	1	1	
68	65054	M	Locknut - 1/2-20 Hex, Centerlock	2	2		78010	O	Label - In-Out	1	1		
69	65094	M	Locknut - No. 10-24 Plated	8	8		78189	O	Disc Adjustment Decal	1	1		
70	3031	S	Bearing Flange	2	2		78231	O	Helicon Patent Label (Not Illus.)	1	1		
71	54080	M	Ball Bearing	2	2		78189	O	Air Cleaner Decal (Not Illus.)	1	1		
72	10275	S	Hax Shaft	1	1		78231	O	Engine Label (Not Illus.)	1	1		
73	66015	S	Key - Woodruff No. 5	1	1		78189	O	Engine Decal - 8 H.P. (Not Illus.)	1	1		
74	10546	M	Drive Plate	1	1		78225	O	Engine Decal - 6 H.P. (Not Illus.)	1	1		
75	54063	M	Ball Bearing	2	2		75040	S	Plug (Not Illus.)	1	1		
76	10548	M	Spindle	1	1								
77	10547	M	Bearing Housing	1	1								
79	10513	S	Front Clutch Lever	1	1								
80	10471	S	Rod	1	1								
81	10237	M	Chain	1	1								
82	10276	M	Sprocket	1	1								
83	10473	S	Disc Bracket	1	1								
84	10544	S	Adjustment Link	1	1								
85	64038	S	Shim Washer - .505 I.D. x .775 O.D. x 24 Ga.	1	1								
86	10212	S	Bracket Pin	1	1								
87	3085	S	Bearing Flange	2	2								
88	57043	M	Snap Ring	1	1								
89	54074	M	Thrust Bearing	1	1								
90	70009	M	Flange Whizlock Screw - 5/16-18 x 2/2 Plated	18	18								
91	3003	F	Friction Wheel	1	1								
92	10277	M	Friction Disc Hub	1	1								
93	67014	F	Cotter Pin - 1/8 x 1-1/4 Plated	1	1								
94	83089	M	Spring	1	1								
95	65032	M	Nut 1/4-20	1	1								
96	70032	S	Wheel Bolt - 1/2-20	6	6								
97	10161	M	L.H. Belt Finger	1	1								
98	10482	S	Clutch Handle	1	1								

SUGGESTED PARTS STOCK CODE

- F = Fast Moving Parts
- M = Medium Moving Parts
- S = Slow Moving Parts
- O = Customer Order Only